

COIL LINE

JOURNAL of PNC³

Vol. II, Number 4

April, 1989

Don Eastman, President
24 Bemis St.
Berlin, NH 03570

Tom Maeder, Editor
1604 Bardale Ave.
San Pedro, CA 90731
(213) 833-7937

On page 11 and following are the lots for PNC³'s first club auction. The material is varied, and we hope that there are some lots that pique your interest. The Bid Sheet appears on page 13. Please check the Rules for Bidders on page 14, and be aware of the grading standards used for the material (page 14).

Dave Agrodnia has done a fine job in putting this auction together. It is his first effort at it, and as such, views it as a learning experience from which future auctions may be expanded and improved. Dave is interested in your comments and suggestions. Please send them to him directly: 219 School St., Berlin, NH 03570.

The results of last month's survey appear on page 7. By and large, the earlier transportation issues meet with more general favor than the later releases. The Silliest, Worst Design, and Least Favorite are all from the last wave. Many of you included comments with your survey form, and there is widespread scorn for the 5.3¢ Elevator and 20¢ Cable Car. On the flip side, the 2¢ Locomotive, 5.2¢ Sleigh, and 5.9¢ Bicycle had overwhelming approval. Blues and reds were the favorite design colors.

My mail bag was unusually full this month. I enjoy hearing from you very much. You are an interesting group of people, and I hope that you are writing to each other as much as you are to me.

Sixteen of our 308 members chose not to renew for 1989. One member no longer collects PNCs, and one member wrote that he never collected them, but used the Coil Line as a vehicle to dispose of coils which he had accumulated. The Editor and the Board of Directors like to think that you are all immensely happy with PNC³, but dues time forces us to concede that perhaps we are not meeting everybody's needs. Please let us know what you like and don't like.

inside

Letters	2
Briefly	4
Recent Auction Results	5
March Survey Results	7
Commercial Covers: 20¢ Flag	9
Ads	10
PNC ³ Auction Lots	11
Bid Sheet	13
Bidder's Rules	14

COIL LINE
Published monthly. Editorial deadline is 4th Monday.
Tom Maeder, Editor
1604 Bardale Ave.
San Pedro, CA 90731
Change of address notices and club applications:
Eric Russow, Secy.
P.O. Box 17373
Whitefish Bay, WI 53217
Dues should be sent to:
Rob Washburn, Treas.
P.O. Box 840
Skowhegan, ME 04976

Letters

For the past 2-3 months I've been sorting through 2-5,000 covers daily. I started on material that was 1-2 years old and have been working up to newer and newer material since then. Over all, I've found a plate number every 100-200 covers, with better than 50% being keepers.

But the Honeybees are a different story. . . a dream and a nightmare in one colorfully diverse package. As yielders of varieties, they're both richly rewarding and fun.

In addition to plate #'s and lines of various colors and combinations (all pretty easy to spot), there are specks, spots, blobs, blank areas, not to mention offset and frameline shifts.

With the exceptions of the frame line shifts which have been found on a number of covers from different individuals, indicating a number of rolls sold with the same shift, I believe the rest of the oddities to be random events rather than CPV's. I'd be pleased to discover otherwise, of course, so you might keep your eyes peeled and send me a photostat of any particularly blaring ones.



yellow
cheerio,
lower
left



radical
frameline
shift

Mac Johnson
6015 E. 21st St.
Tucson, AZ 85711

Mac sent several covers with interesting varieties. Unfortunately, they did not all photocopy well. (Editor)

I strip PNC strips from several businesses in my local area, and came home with a #6 on pre-phosphored paper.

I can't precisely place its origin, but it should have come through the Tampa sectional center.



Archie McKee
Ruskin, FL

Attached is a constant place variety that I call the "flying duck."



Francis "Al" Lipa
Baltimore, MD

The strips illustrated on p. 4 (March issue) interested me. My favorite find is the 18¢ Flag #6 I use to create my xerox stationery. I believe this to be commercial usage. A friend found two such strips (one perfect-- he kept, and mine with nibbled perfs at left) in a large accumulation of stamps on piece. Both had Augusta, GA 1983 postmarks. At that time, 54¢ was the correct rate for 3 ounces, first class.



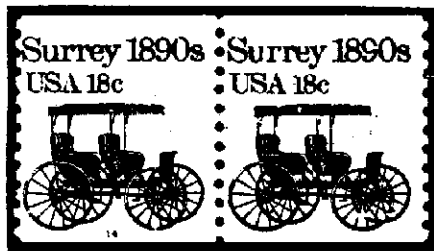
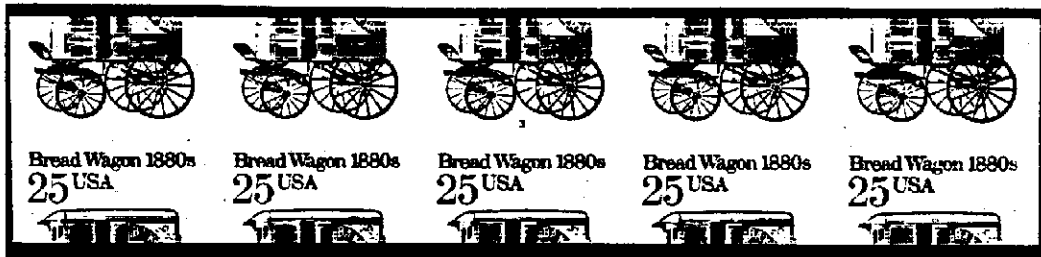
Tom Moseley
Edmonds, WA

Letters

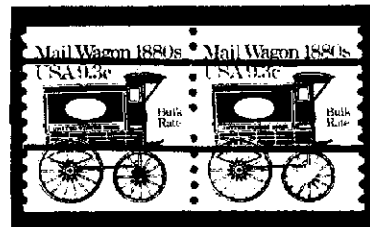
These imperfs are a recent acquisition from a post office in the North Bergen County area of New Jersey (roll of 100).

The Surreys I kept because of missing pieces in the roof's fringe, and because of breaks in the wheels and spokes. This has to be a freak or oddity as it is not constant--it looks like small specks of foreign matter got in the way of the ink.

Marguerite Doney
Allendale, NJ



Margot's appraisal is no doubt correct. Such a circumstance is not too terribly uncommon, but is nevertheless interesting. The 9.3, with missing spokes, is from the Editor's collection. (Ed.)



Among the items in the TOLPEX auction Feb. 25 were several PNC's. The best was an #1891 PS3, plate #3, that sold for \$50--quite a buy, I think, but I wasn't awake enough to get it!

Also sold--

- A lot of #1891, #2 & 4, PS3 10.00
- #1895, #1, 3, 8, 9 PS3 13.00
- #2112, #1 & 2 PS3 6.00
- #2115, #1-5, 8 PS3 6.00
- #2115, #12, 13, T1 PS5 6.00
- 25¢ "E", #1111 & 1222 PS5 4.50

All were MNH, F-VF.

Harold Brown
Bowling Green, OH

Recent issues from Phoenix Philatelic Window are 25¢ Flag over Yosemite #5, and ditto on phosphor paper #8 (both on rolls of 100).

Iver Hodesh
Phoenix, AZ

7.6¢ p/c #2 is in Lansing, Michigan.

Ed Gould
Roscommon, MI

The Editor is quite pleased with the submission of photocopies of material for inclusion in the newsletter. Thanks to those members who went to the trouble. I would like to include one of my own. I received a non-profit mailing (postmarked, no less).

The service-inscription, rather than red, was the same color as the design. (8.4¢, plate #2)

NON-PROFIT
ORGANIZATION
#15-28609



Briefly...

PNC's are 8 years old on April 24. The 18¢ Flag had its "first day" on that date in 1981. Happy Birthday!

The February Coil Line contained a roster of members by states. John Alberstadt of Erie, PA, was incorrectly listed as "John Albertson." Our apologies, John.

Special thanks to those members who contributed postage to the club: Harry Whitlock (\$9.40), Peter Wurzbach (\$70.23), and William LaSalle (\$95.60). It is the resolve of the Board of Directors to set dues no higher than is necessary to meet costs. These generous gifts, therefore, are not contributions to the Coil Line as such, but rather are gifts to the membership as a whole. We all thank you.

HONEYBEE JOINT LINES

Honeybee "D" Press Double Joint Line Positions

	Left											Right														
	12	11	10	9	8	7	6	5	4	3	2	1	0	1	2	3	4	5	6	7	8	9	10	11		
#1	D*	D	D	DD																			D	D	D	#1
#2		D	D	DD	DD	DD									D			D		D*					#2	

D = Double Joint Line

There have been no new positions reported during the last month. I discussed with Al Cibulskas (who in many ways is the godfather of this study) whether we ought to survey the members and ask what colors they have found on the joint lines (by position). The lines are a mixture of all the design colors, but one color is often clearly dominant. I have seen lines that are predominantly blue, gray, yellow, or reddish. It's Al's opinion that since it is often a judgment call, such a survey may be unproductive and lead to confusion. Let's try it anyway; make a judgment. Report your gap position and line-color to the Editor, and we will report the findings to you next month.

The 16.7¢ Popcorn Wagon is reported to have been found imperforate.

Membership Summary

Non-Renewal of Membership

John Foxworth	(#14)
Floyd Rehling	(131)
Joseph Hansen	(156)
Stephen Sickerman	(186)
William Howard	(189)
Kenneth Fedoruk	(203)
Peter Tukker	(208)
John McBride	(209)
Norm Neary	(212)
Paul Marks	(223)
Valery Countryman	(224)
Ralph King	(243)
Robert Effinger	(248)
Thomas Lipari	(262)
William James	(266)
David Hendricks	(291)

New Applicants (previously unpublished)

William Wallerstein	Los Angeles, CA
Walter Friend, Jr.	Portsmouth, VA
Kenneth Fleck	Hatfield, PA
Ike Lee	Cincinnati, OH
James Gaan	Rodeo, CA
Richard Lucia	North East, PA
Neil Steckly	Daly City, CA
Stephen Shelfoon	Bloomfield Hills, MI
Helmut Newmann	Winchester, VA
Philip Lundy	San Diego, CA
Arthur Streng	Scottsdale, AZ

Summary Since Inception

308	members accepted
+11	new applicants
- 3	deceased
-16	non-renewal of membership
<u>300</u>	currently active

Recent Auction Results

SAM HOUSTON PHILATELICS
13310 Westheimer #150 Houston, Tx 77077
713-493-6386

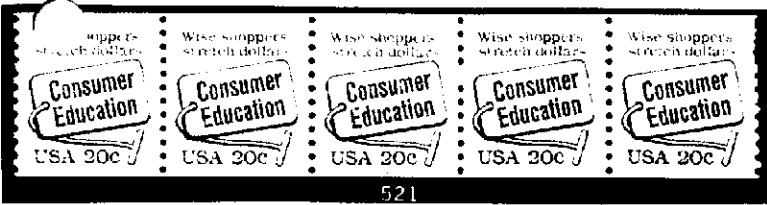
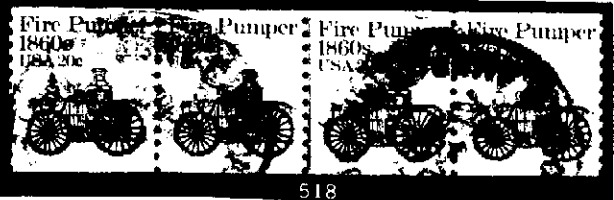
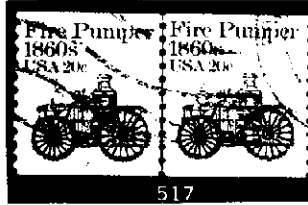
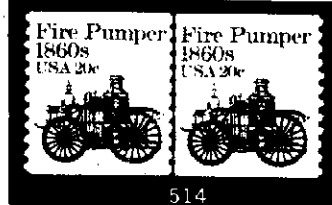
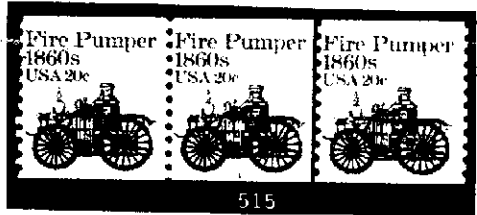
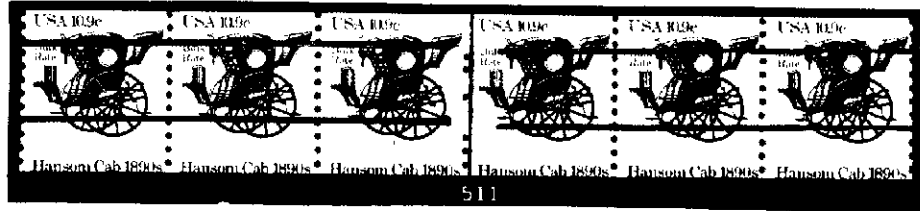
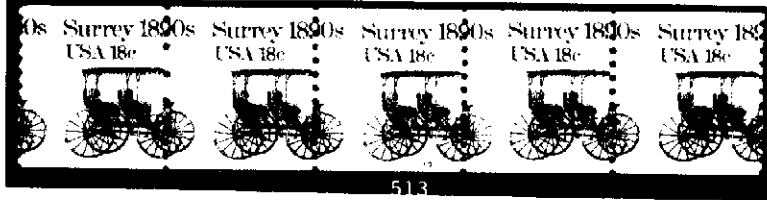
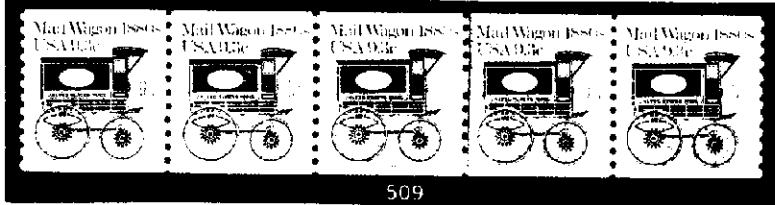
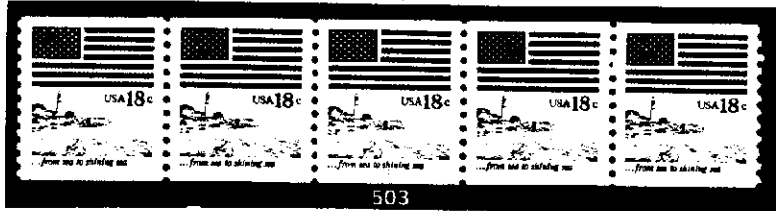
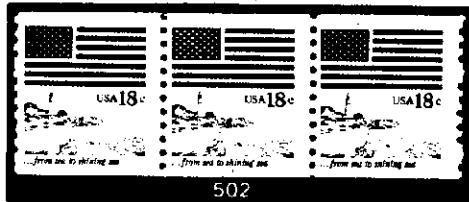
FEBRUARY 28th

PLATE NUMBER COILS

- 502 ** #1891 18¢ Flag Plate Stp/3 #1, F-VF NH... (E)\$150..... PH **155-**
- 503 ** #1891 18¢ Flag Plate Stp/5 #1, XF NH... (E)\$500-600..... PH **370-**
- 504 Cv #1891 18¢ Flag #5 Pair on Colorano FDC, scarce... (E)\$75... PH **100-**
- 505 Cv #1900 5.2¢ Sleigh Line Pair #1 on Fleetwood FDC... (E)\$20... **18-**
- 506 ** #1900 5.2¢ Sleigh Stp/5 #5, XF NH... (E)\$100..... PH **110-**
- 507 ** #1901 & 1901a 5.9¢ Bicycle Plate Stps/3 #3 & 4, both mint & pre-cancelled XF NH... (E)\$50-60..... **50-**
- 508 Cv #1902 7.4¢ Buggy Plate Stp/3 #2 on Colorano Silk FDC, attractive fresh cvr... (E)\$20-25. **22-**
- 509 ** #1903 9.3¢ Mail Wagon Plate Stp/5 #6, VF NH... (E)\$175..... PH **175-**
- 510 Cv #1904 10.9¢ Hansom Cab Plate Stp/3 #1 on Aristocrat FDC... (E)\$20..... **16-**
- 511 ** #1904a 10.9¢ Precancel Plate Stp/6 #1, miscut so Hansom Cab at btm, F-VF NH scarce... (E)\$100..... PH **75-**
- 512 ** #1907 18¢ Surrey Plate Stp/5 #7, XF NH... (E)\$40..... PH **40-**

- 513 ** #1907 18¢ Surrey Misperf Stp/5 #10, perfs shifted 5-6mm to L, VF NH... (E)\$75..... PH **46-**
- 514 ** #1908 20¢ Pumper Line Pair #1 XF NH... (E)\$40-50..... PH **30-**
- 515 ** #1908 20¢ Pumper Plate Stp/3 #1, F-VF NH... (E)\$50..... PH **50-**
- 516 ** #1908 20¢ Pumper Misperf Stp/6 #5, misperf 8-9mm to L, Nice radical shift, VF NH... (E)\$50..... PH **50-**
- 517 @ #1908 20¢ Pumper Line Pair #7 XF... (E)\$50..... PH **50-**
- 518 @ #1908 20¢ Pumper Plate Stp/4 #8 F-VF, fairly heavy col, still scarce... (E)\$60..... PH **42-**
- 519 @ #1908 20¢ Pumper Line Pair #11 F-VF... (E)\$25..... **24-**
- 520 ** #2005 20¢ Consumer Plate Stp/4 #1 & 2, VF NH... (E)\$80-100..... **70-**
- 521 ** #2005 20¢ Consumer Plate Stp/5 #3, VF NH... (E)\$125..... PH **130-**
- 522 ** #2124 4.9¢ Buckboard Plate Stp/5 #4 w/"Buggy Whip" plate crack, VF NH... (E)\$25..... **34-**
- 523 Cv #2258 13¢ Patrol Wagon Stp/3 #1, on Anagram FDC #37 out of only 50 made - an attractive handpainted cover... (E)\$20-25... **22-**

- 524 ** #2281 25¢ IMPERF HONEYBEE Plate Stp/6 #1, XF NH, recent discovery... (E)\$400..... PH **300-**
- 525 ** #0135 20¢ Official Plate Stp/5 #1, VF+ NH... (E)\$50-60... PH **50-**
- 526 Cv #0139 "D" Official Single #1 on official usage cvr, dated 9/24/85, legal size envelope, very clean... (E)\$35-40..... **44-**
- 527 ** #0139 "D" Official Plate Stp/3 #1, XF NH... (E)\$30-40.... **34-**
- 528 ** #0139 "D" Official Plate Stp/5 #1, F-VF NH... (E)\$60-75... PH **60-**
- 1099 ** #1895avar 20¢ Flag Imperf Pair miscut showing full Electric Eye markings at T, unusual item... (E)\$150..... PH **55-**
- 1100 ** #1249var Pane/10, nice example of paper splice w/clear tape on face, red on reverse, fully perforated, PI #5... (E)\$100..... **105-**
- 1101 ** #2281 25¢ Honey Bee Imperf Pair, VF-XF NH... (E)\$50..... PH **40-**
- 1102 ** #2281 25¢ Honeybee Imperf 2¢ stamps, plate #1 on 1 stamp XF NH, from end of roll... (E)\$75-100..... PH **50-**
- 1103 ** #2281 25¢ Honey Bee Imperf Stp/3, VF-XF NH... (E)\$75..... **100-**



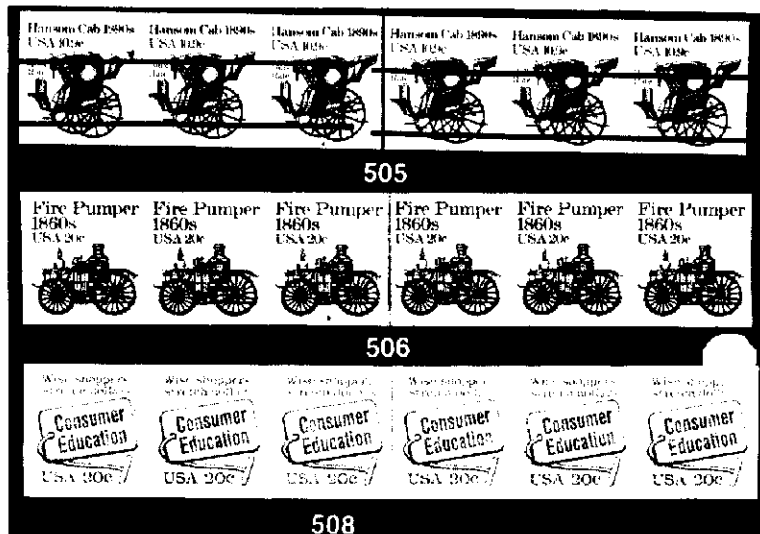
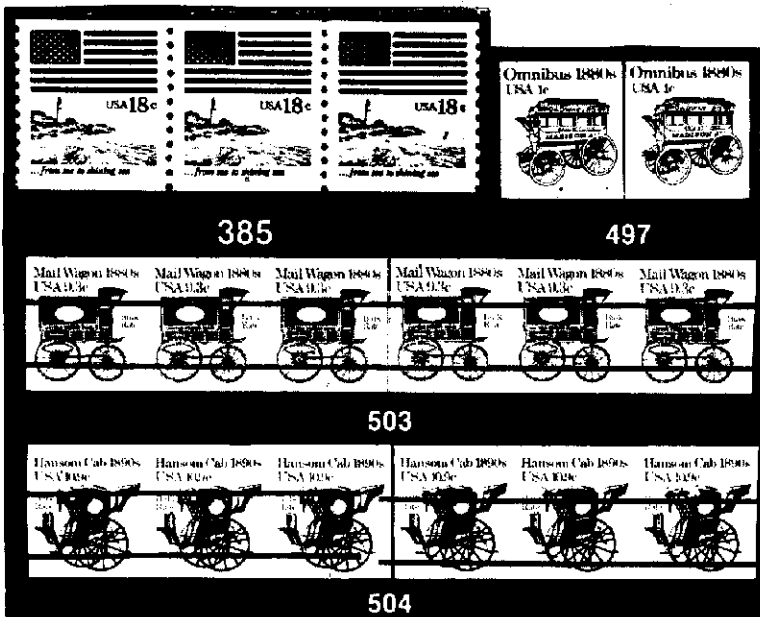
Recent Auction Results

SUBURBAN STAMP, INC.

MARCH 4, 1989

- 385 * #1891, Coil Plate #6, Strip of Three, Never Hinged, Extremely Fine, Philatelic Foundation Cert. (Ph). 300.00 **975-**
- IMPERF PLATE # COILS**
- 494 * #1895a, 20c Flag, Imperf Coil, Plate #3, Strip of Six, Never Hinged, Fine. (EST. \$300-400.) (Ph). **300-**
- 495 * #1895a, 20c Flag, Imperf Coil Plate #8, Strip of Six, Never Hinged, Very Fine. (EST. \$150-250.) (Ph). **160-**
- 496 * #1895a, 20c Flag, Imperf Coil Plate #9, Strip of Five, Never Hinged, Very Fine. (EST. \$150-250.) (Ph). **160-**
- 497 * #1897, 1c Omnibus, Imperf Coil Line and Plate #6 Pair, Never Hinged, Very Fine, RARE. (EST. \$1,000-1,500.) (Ph). **1050-**
- 498 * #1897Ae, 2c Locomotive, Imperf Coil, Plate #3, Strip of Six, Never Hinged, Very Fine. (EST. \$300-500.) (Ph). **340-**
- 499 * #1897Ae, 2c Locomotive, Imperf Coil Plate #4, Strip of Six, Never Hinged, Very Fine, (EST. \$300-500.) (Ph). **340-**
- 500 * #1897Ae, 2c Locomotive, Imperf Coil Plate #8, Strip of Six, Never Hinged, Very Fine. (EST. \$300-500.) (Ph). **400-**
- 501 * #1897Ae, 2c Locomotive, Imperf Coil Plate #10, Strip of Six, Never Hinged, Very Fine. (EST. \$300-500.) (Ph). **400-**
- 502 * #1903b, Mail Wagon, Imperf Coil Plate #1, Strip of Six, Never Hinged, Very Fine. (EST. \$1,250-1,500.) (Ph). **1300-**
- 503 * #1903b, Mail Wagon, Imperf Coil Plate #2, Strip of Six, Never Hinged, Very Fine. (EST. \$1,250-1,500.) (Ph). **1250-**
- 504 * #1904b, 10.9c Cab, Imperf Coil Plate #1, Strip of Six, Never Hinged, Very Fine. (EST. \$1,000-1,500.) (Ph). **1350-**
- 505 * #1904b, 10.9c Cab, Imperf Coil Plate #2, Strip of Six, Never Hinged, Very Fine. (EST. \$1,000-1,500.) (Ph). **1350-**
- 506 * #1908a, Pumper, Imperf Coil Plate #9, Strip of Six, Never Hinged, Very Fine. (EST. \$1,000-1,500.) (Ph). **1050-**
- 507 * #1908a, Pumper, Imperf Coil Plate #10, Strip of Seven, Never Hinged, Very Fine. (EST. \$1,000-1,500.) (Ph). **1050-**

- 508 * #2005a, Consumer, Imperf Coil Plate #1, Strip of Six, Never Hinged, Very Fine. (EST. \$750-1,000.) (Ph). **600-**
- 509 * #2005a, Consumer, Imperf Coil Plate #2, Strip of Six, Never Hinged, Very Fine. (EST. \$750-1,000.) (Ph). **600-**
- 510 * #2112a, "D", Imperf Coil Plate #1, Strip of Five, Never Hinged, Very Fine. (EST. \$300-500.) (Ph). **440-**
- 511 * #2115a, 22c Flag, Imperf Coil Plate #1, Strip of Five, Never Hinged, Very Fine. (EST. \$200-300.) (Ph). **250-**
- 512 * #2115a, 22c Flag, Imperf Coil Plate #2, Strip of Six, Never Hinged, Very Fine. (EST. \$200-250.) (Ph). **150-**
- 513 * #2115a, 22c Flag, Imperf Coil Plate #7, Strip of Six, Never Hinged, Very Fine. (EST. \$400-500.) (Ph). **370-**
- 514 * #2115a, 22c Flag, Imperf Coil Plate #8, Strip of Six, Never Hinged, Very Fine. (EST. \$400-500.) (Ph). **210-**
- 515 * #2115a, 22c Flag, Imperf Coil Plate #18, Strip of Six, Never Hinged, Very Fine. (EST. \$300-500.) (Ph). **320-**
- 516 * #2115a, 22c Flag, Imperf Coil Plate #19, Strip of Six, Never Hinged, Very Fine. (EST. \$400-500.) (Ph). **400-**
- 517 * #2126b, Tricycle, Imperf Coil Plate #2, Strip of Six, Never Hinged, Very Fine. (EST. \$1,500-2,000.) (Ph). **1250-**
- 518 * #2133b, 12.5c Pushcart, Imperf Coil Plate #1, Strip of Six, Never Hinged, Very Fine. (EST. \$300-500.) (Ph). **350-**
- 519 * #2134a, 14c Ice Boat, Imperf Coil Plate #1, with Line, Strip of Six, Never Hinged, Very Fine. (EST. \$500-750.) (Ph). **525-**
- 520 * #2134a, Ice Boat, Imperf Coil Plate #2, Coil with Line, Strip of Six, Never Hinged, Very Fine. (EST. \$500-750.) (Ph). **500-**
- 521 * #2135a, Dog Sled, Imperf Coil Plate #2, Strip of Five, Never Hinged, Very Fine, Very Rare as Only (4) Strips are Known, Two of Which are Badly Centered. (EST. \$3,000-4,000+.) (Ph). **3,600-**
- 544 * #1891a, (2) Imperf Pairs, Never Hinged, Fine (ExPh). 40.00 **11-**
- 546 * #2149b, Washington, Imperf Coil Pair, Never Hinged, Very Fine, RARE. (EST. \$1,000-1,500.) (Ph). **700-**



Survey Results

136 of you returned survey forms (47% of the PNC³ membership). This is a good response, and we thank you for your input.

You were asked for 1st, 2nd, and 3rd choices in each category. To "weight" your responses, 3 points were tallied for a 1st place vote, 2 for a 2nd, and 1 for a 3rd.



Worthiest Subject

1.	2¢	Locomotive	166
2.	3¢	Wagon	108
3.	4¢	Stagecoach	74
4.	21¢	Rail Car	47
5.	17¢	Auto	41
6.	9.3¢	Wagon	38
7.	10¢	Canal Boat	30
8.	18¢	Surrey	28
9.	15¢	Tugboat	25
10.	8.4¢	Wheel Ch.	20
11.	7.4¢	Buggy	19
12.	20¢	Pumper	18
17.	11¢	Stutz	16
1.	12¢	Steamer	14
15.	20¢	Cable Car	13
16.	14¢	Iceboat	12
17.	7.6¢	Caretta	11
18.	5.5¢	Star Route	9
19.	5.3¢	Elevator	8
20.	7.1¢	Tractor	6

Silliest Subject

1.	16.7¢	Popcorn	132
2.	5.3¢	Elevator	127
3.	7.6¢	Caretta	104
4.	12.5¢	Pushcart	80
5.	8.4¢	Wheel Ch.	78
6.	24.1¢	Tandem	31
7.	13.2¢	Coal Car	27
8.	17¢	Dog Sled	26
9.	10.1¢	Oil	20
10.	14¢	Iceboat	16
11.	8.5¢	Tow Truck	13
12.	3¢	Handcar	11
13.	6¢	Tricycle	10
14.	17.5¢	Race Car	7
15.	20¢	Pumper	6
16.	4¢	Stagecoach	5
16.	7.1¢	Tractor	5
16.	9.3¢	Wagon	5
16.	11¢	Caboose	5
20.	4.9¢	Buckboard	4

Most Appealing Color

1.	5.2¢	Sleigh	86
2.	5.9¢	Bicycle	59
3.	10¢	Canal Boat	58
4.	15¢	Tugboat	54
5.	11¢	Caboose	52
6.	10.9¢	Hansom	42
6.	20¢	Pumper	42
8.	14¢	Iceboat	39
9.	17¢	Auto	35
10.	16.7¢	Popcorn	24
11.	13.2¢	Coal Car	22
12.	17¢	Dog Sled	18
13.	2¢	Locomotive	14
13.	3¢	Wagon	14
13.	3.4¢	Bus	14
13.	4¢	Stagecoach	14
13.	17.5¢	Race Car	14
13.	24.1¢	Tandem	14
19.	5.5¢	Star Route	12
19.	21¢	Rail Car	12

Least Appealing Color

1.	25¢	Bread Wagon	58
2.	12.5¢	Pushcart	45
3.	4.9¢	Buckboard	39
4.	6¢	Tricycle	35
5.	7.4¢	Buggy	34
6.	3.4¢	Bus	32
7.	8.5¢	Tow Truck	30
8.	20¢	Cable Car	29
9.	5.5¢	Star Route	24
10.	12¢	Steamer	22
11.	7.6¢	Caretta	21
11.	1¢	Omnibus	21
13.	10.1¢	Oil	20
14.	8.3¢	Ambulance	18
14.	20.5¢	Engine	18
16.	2¢	Locomotive	17
16.	5.3¢	Elevator	17
18.	5¢	Milk Wagon	16
18.	10.9¢	Hansom	16
20.	7.1¢	Tractor	15



Most Handsome Design

1.	2¢	Locomotive	102
2.	5.9¢	Bicycle	51
3.	3¢	Wagon	48
4.	14¢	Iceboat	45
5.	10¢	Canal Boat	43
6.	18¢	Surrey	42
7.	5.2¢	Sleigh	38
7.	11¢	Caboose	38
9.	21¢	Rail Car	37
10.	10.9¢	Hansom	36
11.	16.7¢	Popcorn	32
12.	15¢	Tugboat	29
1.	5.3¢	Elevator	27
14.	12¢	Steamer	26
15.	20¢	Pumper	24
16.	4¢	Stagecoach	22
17.	9.3¢	Wagon	20
17.	17.5¢	Race Car	20
17.	20¢	Cable Car	20
20.	7.4¢	Buggy	13

Worst Design

1.	20¢	Cable Car	77
2.	7.6¢	Caretta	62
3.	12.5¢	Pushcart	51
4.	17¢	Dog Sled	45
5.	4.9¢	Buckboard	38
6.	8.5¢	Tow Truck	37
7.	5.3¢	Elevator	36
8.	8.4¢	Wheel Ch.	34
9.	7.4¢	Buggy	33
10.	10.1¢	Oil	29
11.	6¢	Tricycle	28
12.	8.3¢	Ambulance	26
13.	13.2¢	Coal Car	25
14.	5¢	Milk Wagon	20
15.	14¢	Iceboat	18
16.	12¢	Steamer	17
16.	20.5¢	Engine	17
18.	11¢	Caboose	16
19.	13¢	Patrol	15
20.	24.1¢	Tandem	14

Favorite Color

1.	5.9¢	Bicycle	67
2.	5.2¢	Sleigh	66
3.	2¢	Locomotive	62
4.	18¢	Surrey	42
4.	20¢	Pumper	42
6.	15¢	Tugboat	39
7.	14¢	Iceboat	38
8.	3¢	Wagon	36
9.	10¢	Canal Boat	35
9.	17¢	Auto	35
11.	11¢	Caboose	34
12.	11¢	Stutz	26
13.	16.7¢	Popcorn	24
14.	21¢	Rail Car	23
15.	17.5¢	Race Car	22
16.	10.9¢	Hansom	20
17.	20¢	Cable Car	19
18.	25¢	Bread W.	16
19.	12¢	Steamer	15
20.	7.4¢	Buggy	14

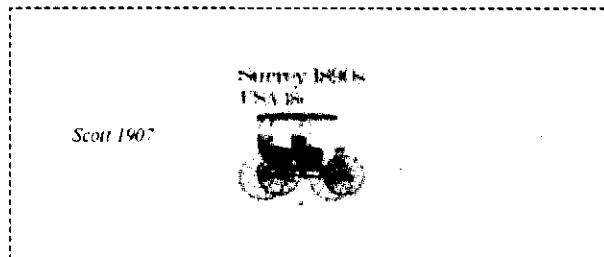
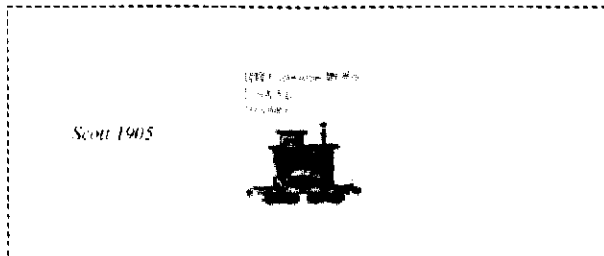
Least Favorite Color

1.	5.3¢	Elevator	66
2.	8.4¢	Wheel Ch.	62
3.	7.6¢	Caretta	58
4.	12.5¢	Pushcart	51
5.	20¢	Cable Car	40
6.	10.1¢	Oil	39
7.	8.5¢	Tow Truck	36
8.	17¢	Dog Sled	29
9.	4.9¢	Buckboard	26
9.	6¢	Tricycle	26
9.	14¢	Iceboat	26
9.	16.7¢	Popcorn	26
13.	7.4¢	Buggy	25
14.	3¢	Handcar	22
14.	13.2¢	Coal Car	22
16.	25¢	Bread W.	18
17.	5¢	Milk Wagon	16
18.	8.3¢	Ambulance	14
19.	12¢	Steamer	13
20.	7.1¢	Tractor	12

PLATE NUMBER COILS

1981-84

Transportation Issue



Collect the Scott Way... with Scott's

PLATE NUMBER COIL ALBUMS

Featuring:

- Three albums. Spaces for all Plate Number Coils listed in the *Scott U.S. Specialized Catalogue*. Two albums for strips of three, both will accommodate strips of five. Brand new is the Scott Comprehensive Plate Number Coil Singles Album.
- The Plate Number Coil pages provide spaces for one example of each strip. The Comprehensive Album and the Singles Album provide spaces for every plate number of every issue.
- Chemically neutralized paper protects your stamps for generations.
- Pages may be housed in a handsome sturdy binder.
- Yearly supplements available to keep your album up-to-date.
- Scott numbers with each space in the album.

COMMERCIAL COVERS: 20¢ FLAG

Rob Washburn
P.O. Box 840
Skowhegan, ME 04976

(3rd in a Series)

The 20¢ Flag Over Supreme Court coil was first released on December 17, 1981 in Washington, D.C. It was issued to meet the 20¢ first ounce, first class rate which was in effect from November 1, 1981 to December 16, 1985. The plate numbers appear every 48 or 52 stamps on a roll depending on whether it was printed on the B press or the C press. Plate numbers 1, 2, 3, 4, 5, 6, 8, 9, 10, 11, 12, 13 and 14 exist tagged and #14 also exists untagged/precanceled. Numbers 1, 2 and 3 are known on first day covers.

The earliest known usages on commercially used cover are as follows:

<u>Plate Number</u>	<u>Earliest Usage Date on Commercially Used Cover</u>
1	1/26/82
2	2/2/82
3	2/18/82
4	8/11/82
5	6/19/82
6	8/19/82
8	1/3/83
9	1/21/83
10	2/13/84
11	3/22/84
12	6/12/84
13	5/13/84
14	7/17/84
14 (Prec.)	11/24/86

It is interesting to note the earliest usage dates listed above for plate numbers 4, 8 and 11 are actually earlier than the Bureau of Engraving and Printing's official to press dates for those numbers: #4 "10/1/82", #8 "7/29/83" and #11 "10/1/84". Obviously, the BEP's official to press dates for those numbers are in error.

Unlike the mint strips, commercial covers of tagged 20¢ Flags are all worth about the same, with prices ranging from \$2.00 to \$6.00 for each. All are quite easy to find. The precanceled #14, however, is very scarce and only one actual commercial cover is known. That cover does not have any indication of its usage date. The precanceled #14 cover listed above was philatelically prepared but was carried through the mailstream.

Plate numbers 1, 2, 3, 4, 5, 6, 8 and 9 are known on commercial covers tied by purple machine cancels. Off cover used singles of number 10 are known with purple machine cancels, but none are known on cover. Number 11 might also be found with a purple machine cancel because that number was available in early 1984 during the period when purple machine cancels were last used. If any of you have examples of purple machine cancels on covers with numbers above #9, please let me know.

Next month I will review the 20¢ Pumpers.

Ads

Sell or Trade: Used PNC singles: 22¢ and 25¢--I need #1,6,10,14 22¢ Flag, used. Also will sell PNC line pair 20¢ Pumper #7 and #8 MNH, VF. One of each; make offer. Earl Elliot, 145 Boulder Rock Dr., Palm Coast, FL, 32037.

Wanted: Plate Number coils and Official Mail stamps on cover. Especially need 18¢, 20¢, 22¢, and 25¢ Flags, Surreys, Pumpers, Bread Wagons, fractionals, & precancels. I pay top prices. John Sweeney, 241 6th Ave., Apt. 6F, New York, NY, 10014.

Wanted: New Issues PNCs. Trade or Buy, Face +10% minimum. Write first. Send list to Red Raider Stamps, 4123 W. 18th, Lubbock, TX 79416-6008 for quote.

(Members are entitled to (2) free 40-word insertions per year. We encourage you to avail yourself of this opportunity.)

What you don't know can hurt you

Every issue of *The Plate Number* has news that helps you collect PNCs intelligently. Whether it's about a new "hash mark," the double impression or the joint lines on the Honeybee, a question about the authenticity of a costly first-day cover, or what you and other collectors have found in the way of varieties, *TPN* reports it all. No other journal comes even close. *TPN* is a must for PNC collectors.

Recent issues have revealed all sorts of information that subscribers could find nowhere else, not in *Linn's*, not in *Stamp Collector*, not even in *Coil Line*.

Six issues \$15 (\$13 for PNC³ members), please add \$3.50 for first-class mail or if you live outside the United States and Canada.

The information comes from members of the Plate Number Coil Study Group, many of whom also belong to PNC³. It is served up every other month.

Also included are full plate-activity reports by BEP, the *TPN* Average of PNC prices (our own Dow Jones Industrial Average), updates of *The Plate Number Coil Catalog* and reports on research by collectors.

Don't miss out. Subscribe.

Stephen G. Esrati

P.O. Box 20130

Shaker Heights, OH 44120

TWO NEW PNC BOOKLETS

PNCs ON COVER

A compilation of all known earliest usage dates of PNCs on cover. Emphasis is on commercially used covers with scarcity ratings for each plate number. Also includes separate listings of plate numbers known on FDCs.

\$7.00 postpaid

PNC VARIETIES

A compilation/checklist of all known PNC varieties including plate flaws, imperfs, color and inking varieties, mat varieties, numbers on top and tagging varieties. This booklet is an indispensable tool for checking varieties on used or mint strips or stamps on cover. With the price for PNC varieties being what they are, it just might be worth your while to know what to be looking for.

Contains 41 pages with over 1,100 listings

\$11.00 postpaid

****SPECIAL** Both booklets for \$16.00**

Rob Washburn
P.O. Box 840
Skowhegan, Maine 04976

PLATE NUMBER COIL COLLECTORS' CLUB AUCTION # 1
CLOSING DATE: APRIL 21, 1989

SCOTT	DESCRIPTION	MIN BID	LOT	SCOTT	DESCRIPTION	MIN BID
PLATE NUMBER STRIPS						
<u>A. Line Pairs or B Press # Pairs</u>						
1	1900a (2), #1 and #2, XF	10.00	51	1906a	#6B, FVF, G1L	6.00
2	1902 B press pair #2, VF, # on rt. stamp	4.50	52	1906a	(2), #1C and 2C, Ave., both LG, #s Clear	10.00
3	1903 #1, FVF	4.25	53	1906a	#2C, F, LG	5.00
4	1907 #4, Ave.	5.00	54	1906a	Same	5.00
5	1908 #1, FVF	6.00	55	1907	#6, FVF	4.50
6	1908 #2, F, # touches	38.00	56	1907	(2), #13F, #14 VF	9.00
<u>B. Plate Number Strips of 3</u>						
7	1900 #1, VF	7.00	57	1908	#12, FVF	5.00
8	1901 #3, VF	9.00	58	1908	#14, FVF	5.00
9	1902 #2, VF	7.00	59	2115	#T1, VF	2.00
10	1903 #2, FV	8.00	60	2123	#1, VF	.50
11	1903 #2, F	5.00	61	2123A	#2, design VF, line XF, LG	10.00
12	1903 #3, FVF design, XF line, slight short perfs.	13.00	62	2133a	(5), #2, FVF to XF	7.00
13	1903 #4, F	11.00	<u>D. Longer Plate Number Strips</u>			
14	1904 #1, XF	12.00	63	1900a	PS8, #3, G3L, XF	10.00
15	1904 #2, XF	12.00	64	1904a	PS9, #3, G3L, FVF design, VF line	380.00
16	1904 #2, Ave., almost misperf	8.00	65	1904a	PS10, #4, LG, FVF	250.00
17	1907 #3, VF	25.00	66	1904A	PS9, #4, G3L, FVF design, VF line, vertical cent. unusually good	390.00
18	2115 (10), #2, FVF	16.00	67	1906a	PS6, #3C, F, LG	5.00
19	2115 #1, VF, short perfs.	4.00	68	1906a	PS10, #3A, FVF, G4R	4.00
20	2115 #3, VF	8.00	69	1906a	PS10, #4A, VF, G4R	4.00
21	2115 #1, VF	4.00	70	1906a	PS11, #5A, VF, G5R	5.00
<u>C. Plate Number Strips of 5</u>						
22	1895 #8, XF	14.00	71	1906a	PS11, #7A, VF, G5R	7.00
23	1895a #14, VF	---	72	1906a	PS11, #7AB, XL line, cut # 85% shows, G5R	7.50
24	1895a Same	---	73	2124a	(2), PS8, #1 and #2, FVF, G2R	5.50
25	1897 (6), #1-#6, all at least FVF	2.50	74	2134	PS7, 'B' Press, #2, scarce TY 1 paper, XF	---
26	1897a (6), #2,3,4,6,8,10, at least FVF	2.40	EFC'S AND VARIETIES			
27	1898a (2), #3 XF, #4 VF	3.00	<u>A. Imperfs</u>			
28	1898Ab #4, FVF	1.25	75	2133a	Pair, XF	40.00
29	1898Ab (5), #3, G2L, (2) FVF, (3) XF	---	76	2136	Pair, slightly miscut top-bottom	8.00
30	1898Ab (4), #4, G2L, (1) FVF, (2) VF, (1) XF	---	<u>B. Whole Plate #'s on top (unless otherwise noted)</u>			
31	1899 (2), #3 and #4, VF	1.75	77	1897	PS5, #3, VF	7.00
32	1900 (2), #1 VF, #2 FVF	12.00	78	1906	PS5, #4, FVF	6.00
33	1900 #5, VF	60.00	79	1906a	PS5, #3B, FVF	---
34	1900a #4, VF, NG	6.00	80	1906a	PS10, #3BA, XF, bottom design cut slightly, G4R	35.00
35	1902 #2, F	5.00	81	1906a	PS10, #4BA, 80% # on top, XF line, bottom design cut slightly, G4R	35.00
36	1902a (4), #2, VF	---	82	2124a	PS5, #2, XF, G1R, double break top bar	5.00
37	1902a Same	---	83	2132	PS5, #1, FVF design, line not touching	8.00
38	1903 (2), #1 VF, #2 FVF	16.00	84	2132	PS5, #2, FVF	8.00
39	1903a #3, LG, FVF	---	85	2134	PS5, #2, 'B' Press, VF	10.00
40	1903a #4, LG, FVF	---	<u>C. Other Miscuts</u>			
41	1903a #3, LG, design VF, line XF	---	86		(6), PS5, with split #'s: 1897 #1, 1897a #2, 1906a #5A, 2135a #2, 2125a #1, 2263 #1	6.00
42	1903a #4, LG, design VF, line XF	---	87	1897	PS5, # is 99% missing, design clear, FVF	---
43	1905 #1, XF	4.50	88	1897	PS5, #2, whole # bottom, partial # top, otherwise VF	2.50
44	1906 #3, F	2.00	89	1897	(2), PS5, #5 and 6, whole # bottom (clear), 50% # on top, VF	---
45	1906 #7, VF	---	90	1903	LP, #1, XF line, whole # touches bottom, partial on top	4.25
46	1906 #7, design VF, line XF	---	91	1905	Pair, no #, wheels show at top	---
47	1906a (5), TY A, #3 VF G2L, #4 VF G1L, #5 FVF NG, #6 XF G1L, #7 VF NG	18.00				
48	1906a #4A, F, LG	10.00				
49	1906a #5A, VF	---				
50	1906a #7A, design VF, line XF	---				

LOT	SCOTT	DESCRIPTION	MIN BID	LOT	SCOTT	DESCRIPTION	MIN BID
92	1906a	PS11, #5AB, split #, 75% on bottom, 25% on top, XF line	7.50	<u>B. FDC by Tudor House</u>			
93	2115	PS3, #3, split #, F	7.00	127	1897	PS3, no #, XF joint line, 17 cents added	10.00
94	2134	PS5, no # top or bottom, design VF, line FVF	16.00	<u>C. Commercial Covers with Plate Numbers (sound stamps on clean covers unless otherwise noted).</u>			
<u>D. Misperfs</u>				128	1891	#1, period of use, XF	10.00
95	1906a	PS5, #5A, misperfed thru 17 of 1917	2.50	129	1891	#3, clear postmark, fewer than 100 known	30.00
96	1906a	PS5, #7A, misperfed thru second 1 of 1917	2.50	130	1891	Pair, #4, FVF, very clean cancel	10.00
<u>E. Constant Plate and Mat Varieties</u>				131	1895	#1, purple cancel, VF	3.00
97	1895	PS3, #14, G-line var., 1L, FVF, Est. Val. \$10-15	---	132	1895	#2	1.00
98	1897	PS5, #3, matched pr. with crack and continuation, 2L, F, Esrati Cat. #45	---	133	1895	Pair, #4, FVF, short perf each stamp	4.00
99	1897	PS10, #3, 'Rocks in Road', 8R, F, Est. Val. \$10	---	134	1895	Pair, #6, VF, # stamp 2 short perfs, other stamp 4 short perfs	4.00
100	1905a	Strip of 5, no #, 'Brakeshoe', XF	10.00	135	1895	PS3, #8, VF, rt. stamp short perfs	7.50
101	1906a	PS10, #3BA, 1 Dot-5 Dot MV, F, G4R	10.00	136	1895	Pair, #8, FVF	4.00
102	1906a	PS10, #4BA, 1 Dot-5 Dot MV, F, G4R	12.00	137	1895	#8	1.00
103	2130	PS18, #1, 'Artillery Shell II', 12L, XF	15.00	138	1895	#9	1.00
104	2130	Strip of 5, no #, 'Artillery Shell II', XF	10.00	139	1895	#14, VF	1.50
105	2149	PS7, #3333, 'Pimple Variety', 2R, FVF, Est. Val. \$15-20	---	140	1897	PS4, #1, split #	2.00
106	2252	Strip of 5, no #, stone (dot) under rt. rear wheel of center stamp, S	5.00	141	1897	#5	1.00
107	2252	Strip of 5, no #, stone (dot) under rt. rear wheel of center stamp, FVF	2.50	142	1899	#1	1.00
108	2260	PS7, #1, broken 1 in 15, 1R of P#, S	8.00	143	1906	LP, #1, used as post. due	10.00
109	2260	PS5, #1, broken 1 in 15, 1R of P#, FVF	4.00	144	1906	LP, #2	2.00
<u>F. Other Varieties</u>				145	1908	#4	3.00
110	2115	Pair, black dome, rest of building 'Erie Blue' rt. stamp SE, lf. stamp XF, Est. Val. \$10-20	---	146	1908	#6	3.00
111	2115	Pair, 'Erie Blue' color var., VF	15.00	147	1908	#8	3.00
112	2124a	(6), PS5, #5 - #6, LG, (2) normal, (2) upper bar break, (2) both bars broken, all FVF or better	6.00	148	2112	(2), #1 and #2	2.00
113	2281	PS14, #1, double joint line (yel/blue) complete, 9R, VF	---	149	2115	PS2, #8, overseas to England	2.50
<u>COVERS</u>				150	2128a	#2	2.00
<u>A. FDC by Arctcraft</u>				151	2130a	#1	1.50
114	1895	PS2, #2, XF, some short perfs	10.00	152	2133a	#1, Linn's windowed cover, VF	2.50
115	1900	PS4, #2, FVF	---	<u>D. Plain Cover</u>			
116	1901	PS4, #3, FVF	---	153	2112	#8, broken 8 variety, slight toning top 25% of cover, FVF	5.00
117	1901	PS4, #4, VF	---	USED			
118	1902	PS3, #2, FVF	---	154	1895	#14, untagged, new discovery, FVF, Est. Val. \$10-20	---
119	1903	LP, #1, FVF, 2 cents added	---	155	1895	(8), singles #1-6, 8, 9 with purple cancels only #1895's with purple cancels	5.00
120	1903	LP, #2, FVF, 2 cents added	---	156	2115	#4, 'Erie Blue', tied on piece, VF, Est. Val. \$15-20	---
121	1904	LP, #1, FVF	---	<u>DONATIONS TO CLUB</u>			
122	1904	LP, #2, design FVF, line VF	---	<u>A. From Don Eastman</u>			
123	1905	PS3, #1, Ave., # is cut	---	157	2124a	Strip of 5, CPV, 'Cat Scratch', FVF	---
124	2115	PS2, #2, XF	---	158	2264	Strip of 3, CPV, 'Spotted 20', XF	---
125	2149	PS2, #3333, FVF, short perfs	---	<u>B. From Al Cibulskas</u>			
126	2150	PS3, #11111, FVF	---	159	1899	Strip of 4, gray-black color var., XF	---
				160	1908	Strip of 5, horizontal miscut, part of 'Fire Pumper' on bottom	---
				161	1908	Strip of 5, misperf through 'e' of 'Pumper'	-

LITERATURE

LOT
 162 5 Copies, Minimum Bid is \$18.00 per copy. Copies to 5 highest bidders.
 "Transportation Coil Issues", by Joseph Agris. This is a hard cover,
 leather bound, special collector's edition and it will be signed by
 the author. It contains a history of the plate numbered coil issues
 from their inception through the rate change "E", non-denominational
 of April 1989. This is one of a planned two-volume series. Mr. Agris
will donate the proceeds of one successful bid to the Club .

- * Number in () preceding a lot description indicates number of items in that lot. For example Lot 1, 1900a, has two line pairs.
- * Note that some lots do not have minimum bids as indicated by --- .

BIDDING INCREMENTS

	<u>BIDDING AREA</u>	<u>RAISE</u>
\$	1.00 - 9.50	.50
•	10.00 - 49.00	1.00
	50.00 - 97.50	2.50
	100.00 - 495.00	5.00
	500.00 +	10.00

Irregular bids will be reduced to the next lower level. Each lot will be sold to the highest bidder at one increment over the second highest bid unless the minimum bid is not reached. Any bid not in good faith, in the estimation of the Auction Director, may be rejected. The Auction Director reserves the right to remove any lot from the sale.

 PNC3 AUCTION BID SHEET - CLOSING DATE: APRIL 21, 1989

Name _____ PNC3# _____
 Home _____ Home Area _____
 Address _____ Phone () _____
 City _____ State _____ Zip _____

You will be billed for Insured Mail (under \$50) or Certified Mail (over \$50) covered by our APS Insurance, plus normal postage.
 Please execute the following bids for me in this mail auction.

All bid sheets must be signed! Signature: _____

Lot #	Bid	Lot #	Bid	Lot #	Bid	Lot #	Bid	Lot #	Bid
-----	-----	-----	-----	-----	-----	-----	-----	-----	-----
-----	-----	-----	-----	-----	-----	-----	-----	-----	-----
-----	-----	-----	-----	-----	-----	-----	-----	-----	-----
-----	-----	-----	-----	-----	-----	-----	-----	-----	-----
-----	-----	-----	-----	-----	-----	-----	-----	-----	-----

CHECK YOUR BIDS CAREFULLY!
 Please limit my purchases to \$ _____ Limits less than \$25, respectfully declined. Bids of bidders with purchase limits will be executed in the order (vertically) in which they list their lots.
 Send completed bid sheets to:
 David Agrodnia, PNC3 Auction, 219 School St., Berlin, NH 03570

BIDDERS

1. Please use the bid sheet provided. I will not accept any bids if not on this sheet. You may use photocopies or extra forms are available for .04 each and a SASE, 10 sheets per 1 oz. of postage.
2. Please sign your bid sheets. This constitutes acceptance of these terms of sale. Unsigned bid sheets will not be accepted.
3. MB stands for Minimum Bid. This is a reserve auction and these MBs must be met as they are set by the consignor. Any bids under the MB are rejected.
4. "BUY" bids are accepted. The bidder agrees to pay one increment over the next highest bid.
5. "OR" bids are accepted on lots that are described as "Same".
6. I do accept bidding limits. However, limits under \$25 are respectfully declined.
7. Lots are sold to the highest bidder at one (1) increment over the second highest bid. In case of a tie, the earliest bidder wins.
8. CHECK YOUR BID SHEETS CAREFULLY! Although I will check on drastic bids (e.g. a \$200 bid for a \$20 item), the PNC3 Auctions are not responsible for any incorrectly submitted bids.
9. Upon closing the auctions, you will be notified of your purchases. Please send payment within 5 days.
10. Postage and insurance cost will be added to each invoice.
11. Any lots not found to be described may be returned within ten (10) days of receipt in the same condition that they were sent.
12. There is NO BUYER'S PREMIUM at this time.

GRADING

AVERAGE (AVE) NUMBER IS CUT AND/OR DESIGN TOUCHES THE PERFS.

FINE (F) THE JOINT LINE, IF ANY, DOES NOT TOUCH THE PERFS AND/OR THE NUMBER TOUCHES THE BOTTOM EDGE. THE DESIGN IS CLEAR OF THE PERFS.

FINE VERY FINE (FVF) THE JOINT LINE, IF ANY, TOUCHES THE PERFS AND THE PLATE NUMBER IS CLEAR OF THE BOTTOM EDGE. FOR ISSUES WITHOUT A JOINT LINE, THE NUMBER WILL BE CLEAR OF THE BOTTOM EDGE. IN BOTH INSTANCES, AT NO POINT IN THE STRIP WILL THE DESIGN BE CUT BY THE PERFS.

VERY FINE (VF) THE JOINT LINE IS AT LEAST 50% ON THE PERFS, THE PLATE NUMBER IS WELL CLEAR OF THE BOTTOM EDGE. ON ISSUES WITH NO JOINT LINE THE NUMBERS WILL BE WELL CLEAR OF THE BOTTOM EDGE. THE ENTIRE DESIGN WILL BE WELL CLEAR OF THE PERFS.

EXTRA FINE (XF) THE JOINT LINE IS WHOLLY WITHIN THE PERFS AND THE OVERALL CENTERING OF THE STAMPS WILL BE CLOSE TO PERFECT.

SUPERB (S) ANY JOINT LINE WILL BE PERFECTLY CENTERED WITHIN THE PERFS AND THE STAMPS WILL BE PERFECTLY CENTERED.