

COIL LINE

JOURNAL of PNC³

Vol. III, No. 4

Whole No. 22

April, 1990

Don Eastman, President
24 Bemis Street
Berlin, NH 03570

Tom Maeder, Editor
1604 Bardale Ave.
San Pedro, CA 90731
(213) 833-7937

Roster

This issue includes a complete membership roster, complete with addresses and collecting interests (for those that submitted the information). I suppose that each member has his own expectations about membership. Some may just want PNC information. Others may be passive collectors who take comfort in having monthly confirmation that there are other Americans similarly obsessed. We are all allowed to define our membership for ourselves.

The Editor's vision (as George Bush says, the "vision thing") is a membership that slowly gets to know one another, contacts each other, trades material with each other. The "Roster and Collecting Interests" is meant to be a vehicle to help achieve that. I have said on these pages before that as Editor I feel uniquely fortunate to be able to know so many of you. I really get a sense of "PNC3 Family." Share yourselves with each other. Find collectors on the list with similar collecting interests and write to them. Many are eager traders. Answer all queries with at least a postcard.

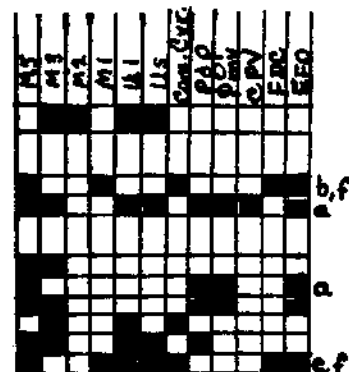
PNC³ Auction

Also included in this issue are the lot descriptions and bid sheet for the third PNC3 Auction. With 492 lots, this auction contains the most varied and worthy material to date. Some members have never bid at auction, perhaps because they attach some mystery to it. It's easy. If you want an item, write on the bid sheet the most you are willing to pay for it. If yours is the highest bid, you will receive it. Your bid price will be reduced to one increment over the second highest bid. So in no case will you pay more than you bid, and in many cases you'll pay less.

Dave Agrodnia has done an outstanding job in assembling this auction. He has made sure that the lots are scrupulously graded. Bid with confidence.

inside

Letters	2
Briefly	3
PNC Varieties	5
Buzzline	7
Roster and Interests	11
Ads	16
PNC3 Auction Lots	17
Bid Sheet	24



Letters

I usually check my strips under UV light because I don't come across many Flags with block tagging. There is some slight difference with short-wave: one seems "whitish," the other "greenish." For some reason I switched to long-wave, and WOW! The "greenish" does nothing, the "whitish" jumps out.

I have found the following 25¢ Flags with greenish tagging: #1, 2, 6-11, 13. The following had whitish: #6, 10, 11, 13.

On another subject, I'd like to see someone discuss papers of PNC: in particular, the honeybee paper compared to others. I never cease to be amazed at how easily it tears.

**Archie McKee
Ruskin, FL**

Dear Archie: Yes, you are correct; there are at least three different paper types, from dull, to brite, to hi-brite on the 25¢ Yosemite. I have hi-brite of #10 and #11.

**H. Harry Mueggenburg
Carmichael, CA**

For years Ed Denson has run successful "music camps" in conjunction with Kicking Mule Records. Now he and I are exploring the possibility of putting on a "PNC Trading and Seminar Camp" at his farm in Alderpoint, California (southeast of Eureka). If any PNC3 members would be interested in such a gathering sometime during the summer, would you be kind enough to drop me a postcard with the following input: 1) early or late summer? 2) motel; motorhome/trailer; tent/car camp? 3) 1 day, 2 days, 3 or more? 4) Would like to lead/present a topic of discussion or seminar? We'll announce our decision based on your responses in a future issue.

**Mac Johnson
2509 N. Campbell #291
Tucson, AZ 85719**

Coil rolls of 100 of the 25¢ Yosemite #14 are available in Charleston, Illinois. Do some readers know what plate numbers of the 25¢ Flag are currently being sold by Philatelic Sales?

**Frank R. Covey
16 Grandview Dr.
Macomb, IL 61455-9705**

In addition to #14, #15 has also appeared. #12 has still not been reported. Ed.

I'm not a big believer in the mint fetish that seems to "dog" many collectors. I collect used material, and the only reason I exhibit is to demonstrate what can be done with relatively cheap material. In the past I have won major awards in the Northwest with such exhibits in very respectable competition.

**Howard Foster
Spokane, WA**

I have been very interested in "Buzzline," but in the limited number that I see, have not discovered any of the varieties.

**Rev. Leonard Lack
Chippenham, Wilts,
England**

COIL LINE
Published monthly. Editorial deadline is the 15th.
Tom Maeder, <u>Editor</u> 1604 Bardale Ave. San Pedro, CA 90731
Change of address notices and club applications: Eric Russow, <u>Secretary</u> P.O. Box 7386 Des Moines, IA 50309
Dues should be sent to: Rob Washburn, <u>Treasurer</u> P.O. Box 840 Skowhegan, ME 04976

Letters

Perhaps we in PNC3 are missing a good bet by not consolidating our knowledge and experience about roll sizes. When one starts out on a post office safari, particularly in search of a certain number, it would be helpful to know if one is looking for big game or little game.

I'd like to suggest that, on a trial basis, Coil Line print a table of known roll sizes for all 25¢ Flag numbers. After an initial printing, the table would be rerun only when new information is added.

I've enclosed a starting list based on my own experience and what I've read in Coil Line or TPN. I've avoided speculating where I do not clearly remember the roll size from which some of my strips came. I am sure the membership can quickly fill in the spaces to make a complete and accurate list.

The hunters among us should find this useful. I know I would.

Alan Thomson
Northwood, NH

25F Roll Sizes

#	<u>Size</u>	5	A	9		<u>Key</u>
1	B	5i		9i	A	A - 100
2		6i		10i	A	B - 500
2i	B,C	7		11i	A	C - 3000
3	B	7i	A	13i	A	D-10000
3i	B*,D	8	B	14i		i - prephosphored
4	B	8i	A,B*	15i		* - has 'P' on label

The Editor would be happy to accept information from members to help complete this table. Ed.

Regarding Mac Johnson's "Buzzline": I recently had the chance to examine a roll of 3,000 Honeybees. Although some varieties appear to be constant in the first 1,000 stamps, they may completely disappear in the last 1,000.

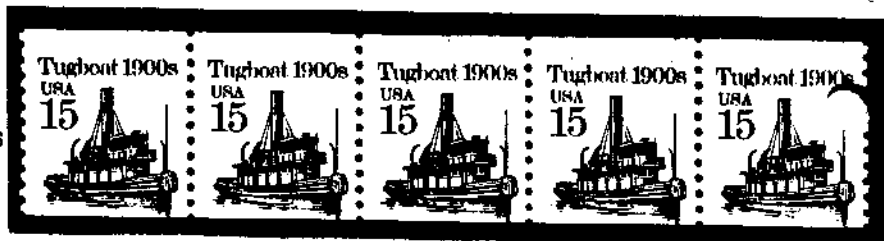
Eugene Y. Liu
Downey, CA

Briefly...

A 25¢ Flag #7 has surfaced on cover with the plate number red instead of green. This is an inking phenomenon, and not an error in the strict sense. The cover is postmarked Oct. 23, 1989 at Minnesota Lake, MN. A similar variety appeared on the 22¢ Flag, with blue plate numbers (instead of black) known on #17, 19, 20, and 22.

PNC3 will hold a regional meeting for members and guests on Saturday, April 28, in Plymouth, Michigan. The PNC3 meeting will be held in conjunction with the Plymouth Show, sponsored by the West Suburban Stamp Club, at the Plymouth Central Middle School, located at Church and Main Streets in Plymouth. The meeting will be chaired by past-president **Gene Trinks**, and will include a slide presentation on collecting plate number coil stamps and covers.

Rocco Caponi submitted this example of 15¢ #1 at top. This is unlisted in Esrati's 1989 catalog, so it is perhaps a "discovery copy."



Thanks for contribution of postage: James Courter II, \$3.03; and for a cash contribution: Lathrop P. Smith, Jr., \$15.00.

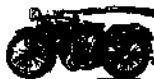
Two months ago the Board of Directors requested a vote on a constitutional revision to allow for changes to be made by a vote of 2/3's of members voting rather than 2/3's of the total membership. The vote on that revision was 290-0. 2/3's of the total membership having approved, the revision is adopted.

Finally, the excitement of some new coils! \$1 Sea Plane will be released on April 19 at a site not yet announced, and a 5¢ Circus Wagon will debut on April 20 at Phoenix, AZ. The use of transportation subjects here seems to be a good indication that the next rate change will continue the Transportation Series. The series is already the longest in U.S. postal history, and more designs can only add to the fun.

Ken Lawrence and Bob Rabinowitz have purchased a "time share" condo on the island of Maui. Each will have the use of the condo for alternate 2-week periods, and perhaps may share it together in retirement. Bob reports that he has agreed to pay the utilities as long as Ken quits expecting him to pick up his lunch tabs. Bob figures he'll be ahead in the long run.*



Motoreycle
1913
USA 5c



Illustrated is the only known use of the 22¢ Flag with 'black field' on cover. A collector who was given some by the original finder used a single on an SASE. Ironically, the SASE was sent to an Ohio stamp dealer in request of a price list, who sent it back through the mailstream without comment.

The Board has directed that advertising rates for the Coil Line be increased. Full page ads will cost \$42, half page \$22.50, and quarter page \$12. Classified ads will remain at 6¢ per word, with PNC3 members entitled to two (2) free 40-word insertions per year. Our dealer members are encouraged to advertize in the Coil Line. The members are active PNC collectors, and the unit cost of reaching them with a full page ad is about 10¢; for a half page ad, 5¢. In return, it is hoped that members will support these dealers. By advertizing, the dealer is helping to keep the annual dues low. PNC3 is a non-profit operation, with neither the Board nor the Editor drawing any stipends. It has been the intent of the Board to provide the greatest amount of services at the lowest possible cost to the members. We would all be most grateful to dealers who can help in this endeavor.

Alan Thomson reports plate 3 (prephosphored) of the 25¢ Flag with half of the #3 uninked. #2 has been previously reported this way.

* April Fool!

PNC Varieties

A. S. Cibulskas

It should come as no surprise to the readers of the Coil Line that plate number coil collecting is currently one of the most popular areas of United States philately.

Specialist collectors in all fields of philately have always examined the material of their field of interest with a "fine tooth comb" looking for varieties, freaks, and errors. They delve into the technical details of production and printing for rationalizations and causes.

The number of afficianados has historically been minimal at best. As the momentum continues with PNCs in general, there has been a concurrent increase in the number of variety seekers. Why this has come about is a matter of debate. Is it people nearing the completion of their basic collections to the degree of their financial comfort, but still have a continuing intrigue with the series in general? Is it interest from general EFO collectors who have targeted this series for additional material? Is it simply the desire for something unusual?

The bottom line remains the same: interest in this type of material continues moving upward. As the author of the Plate and Mat Variety column in TPN, I never lack for material for inclusion in the column. The diversity of the collectors reporting their finds is also obvious.

Just what is the definition of a variety? A dictionary would say a variety is something differing from others of the same kind. There are a sufficient number of different types of variety material saved in PNCs that the above is probably as suitable a definition as is generically possible.

This article is an introduction to a series. I will here provide an overview of the types of varieties currently being collected, and in subsequent articles provide a listing of the known items, with descriptions, in their respective categories.

To accomplish the latter on an all-inclusive basis would be a monumental undertaking. Hence, a few ground rules are set down, both in an attempt to maximize collector interest and in an attempt to make this a manageable undertaking:

- a) The scope of the material presented will be limited to those varieties occurring within a plate strip of five.
- b) Material presented will be limited to items known to be constant.

This report will be serialized until some degree of completion is attained. The intent at the outset is to continue on a monthly basis.

A brief overview of the types of varieties currently being collected will serve as an introduction. It should be noted that the following cannot be all-inclusive, but rather a subjective subdivision of sorts. As this is still an evolving area, additions, corrections, and so forth, are to be expected.

(continued)

Plate Varieties. These generally result from flaws in the in the printing plates, either present initially or, more likely, developed during the subsequent stages of the printing process. The most common are cracks, gouges, or chips. They generally occur at or near the joint line on Cottrell-press printings, resulting from stress at the edge of the printing plate. The position of the variety is named by counting the perforations right or left of the joint line.

Mat Varieties. Examples of these varieties are limited to precancel issues where the overprint was done with precancelling mats. These mats are less durable than the printing plates, and are subject to cutting, mangling, and misshaping.

Chill Roller Offsets. Partial image doubling to various degrees is known on certain issues. Originally misdefined as "double transfers," the causes have been fully defined and presented in detail by K. Lawrence. In brief, some stamps show doubling of design parts, letters, or numerals.

Imperforates. These varieties have escaped from the Bureau of Engraving and Printing without perforations. Known examples are listed in The Catalog of Plate Number Coils, edited by Steve Esrati.

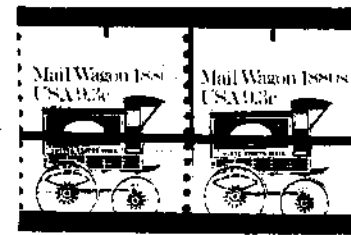
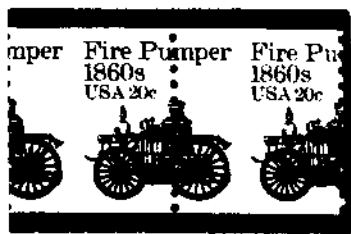
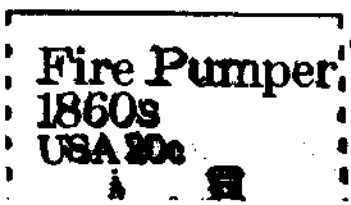
Misperforates. The design is off-center with respect to the perforations. Examples of these are considered by most to be freaks rather than varieties. Though certainly desirable and collectable, they are not listed in the current catalog. They are known to some degree on most coils.

Miscuts. This term applies to material resulting from a faulty alignment of paper fed during the cutting operation. The result is an abnormal design positioning along the horizontal axis. By far the most common is a downward design shift resulting in split plate numbers. Initially, most collectors and dealers rejected such material as undesirable. Recent articles by Frank Shively, Jr., M.D. have helped to elevate the collecting of this material to the mainstream. A separate classification system has been established, and its usage is becoming commonplace.

Layout Markings. Also known as LOMS, these are either dots or horizontal lines, or a combination of both, almost always on the numbered stamp. To date they have been only found on Cottrell printings. They vary in intensity from readily obvious to some for which a glass is necessary. Layout markings are believed to be markings used by designers and/or engravers in setting up the plate. They are normally removed before the plates are sent to press.

Miscellaneous. This catch-all term encompasses the remaining material. Examples include, but are by no means limited to: ink smears, doctor blade lines, various color misregistrations, color bleeds (which are relatively common on the flag issues), partial design missing (resulting from the presence of some foreign material on the printing surface), random ink blobs, etc., etc.

Next month we will begin with a detailed study of the plate varieties.





Buzzline

Mac Johnson
2509 No. Campbell, #291
Tucson, AZ 85719



This month completes the initial exploration into repetitive printing varieties of the Honeybee issue. This installment presents RPV's in white. Previous issues have illustrated the black, red, green, yellow and blue varieties.

These white varieties, or "ghosts," present a bit of a problem. Since these are white marks on a yellow background, and since the yellow background in our photocopied illustrations appears white, I've had to adopt the convention of using a black mark to represent what is actually white.

Of all the RPV's presented, I must be the first to point out that ghosts present the greatest potential for error in identification. Being white on a yellow background, their boundaries are not always as distinct as their colored brethren. I've tried to err on the side of caution in this regard, discarding perhaps 8-10 "almost" certifiable ghost RPV's.

The real curiosity about ghosts, however, is their genesis. How does an uninked area of reproducible size, shape, and location appear in that yellow background? Is it caused by oil? lint? sun spots? I leave such investigations and discussions to those of you more familiar with the mechanics of the printing process. "I find 'em, you explain 'em," is my motto.

My thanks to those that have written to me over the last four months, either confirming that you had located copies identical to the ones illustrated, or in reporting new ones for which you had multiple copies.

I realize that PNC3-member interest varies quite a bit on this subject, from having no interest whatsoever to being as passionately crazed as I am. In any event, should you spot a stray splash of colored ink on a Honeybee, see if you can match it up with one illustrated; you may find the challenge of more interest than you imagined.

White

W-1



WHITISH RING ON 2ND FLORET FROM RT. AT THE BOTTOM, ANOTHER RING ON NEXT FLORET OVER MOVES.

W-2



WHITISH RING ON 5TH FLORET FROM THE RIGHT AT THE BOTTOM.

W-3



WHITE DOT AT TOP OF THE LARGE FLORET UNDER BEE'S HIND LEG.

W-4



WHITISH UNPRINTED AREA ON CURVE OF '5'.

W-5



WHITE "CHEERIO" BEHIND THE UPPER PORTIONS OF '2' AND '5'.

W-6



WHITE SLASH AND A ROW OF GREENISH SPOTS ON FLOWER.

W-7



WHITE CURVED LINE FROM TOP OF LOWER LEFT LEAF TO MARGIN.

W-8



WHITE ANGLED LINE PROJECTING DOWN FROM '5' AND TO THE LEFT.

W-9



WHITE TRIANGULAR GHOST BELOW '5'.

W-10



WHITE DOT NEXT TO MARGIN TO THE RIGHT OF U.S. LEAF.

W-11



OBLONG WHITE SPOT ABOVE U.S. LEAF.

W-12



WAVY WHITE CRACK EXTENDING UPWARDS FROM LOWER R. LEAF.

W-13



WHITE DIAGONAL SLASH EXTENDING UPWARDS FROM U.R. LEAF TO MARGIN.

W-14



WHITE SLASH EXTENDS UPWARDS FROM L.R. LEAF, BLUISH LINE AT RIGHT

W-15



BOLD WHITE AREA NEXT TO UPPER RIGHT FRAMELINE, BLUE LINE AT RIGHT

W-15a



SAME AS W-15 WITH THE ADDITION OF A BLACK SPOT ON LOWER RIGHT LEAF

W-16



LARGE WHITE SPOT ABOVE BEE'S WING.

W-17



ANGULAR WHITE MARK AT LEFT FRAMELINE JUST BELOW '2'.

W-18



OBLONG WHITE SPOT JUST BELOW L. BASE OF '5'.

W-19



LARGE WHITE SPOT JUST BELOW R. BASE OF '2'.

W-20



CURVED WHITE SLASH TO THE LEFT OF U.L. LEAF.

W-21



WHITE DIAGONAL SLASH FROM L. BASE OF '2' TO L. MARGIN.

W-22



WHITE SLASH, WITH A SLIGHT INCLINE, WHICH EXTENDS RIGHT FROM THE CURVE OF '5'

W-23



CURVED WHITE SLASH INSIDE THE CURVE OF '2'.

W-24



WHITE DASH BETWEEN THE BASE SERIES OF 'A'.

W-25



LARGE WHITE SPOT BETWEEN THE UPPER ARMS OF 'U'.

W-26



WHITE SLASH, WITH A SLIGHT BEND, BELOW THE R. BASE OF '2'

W-27

2L/2/PL



WHITE 'WORMY' GHOST ABOVE BEE'S L. WING

W-28



WHITE GHOST INSIDE LOWER CURVE OF '2'.

W-29



WHITE SLASH BELOW 'A'.

- 11 -

roster & INTERESTS

Codes:

M5, etc. - mint strips of 5, etc. other:

- | | |
|--------------------------------|-----------------------|
| U1 - used singles | a - paper types |
| Us - used strips | b - coil seals |
| Com. Cvr. - commercial covers | c - numbers at top |
| Pgp - precancel gap positions | d - tagging errors |
| Pmv - precancel mat varieties | e - souvenir pages |
| CPV - constant plate varieties | f - ceremony programs |
| FDC - first day covers | g - imperfs |
| EFO - errors, freaks, oddities | |

M5	M3	M2	M1	U1	U5	Com. Cvr.	Pgp	Pmv	CPV	FDC	EFO
----	----	----	----	----	----	-----------	-----	-----	-----	-----	-----

NOTICE:

Several pages have not been included in this online issue because of privacy concerns dealing with members, their home addresses and collecting interests.

NOTICE:

Several pages have not been included in this online issue because of privacy concerns dealing with members, their home addresses and collecting interests.

5
3
2
1
1
5
M.C.M.
9P
MY
PV
DC
FO

NOTICE:

Several pages have not been included in this online issue because of privacy concerns dealing with members, their home addresses and collecting interests.

15
13
M2
M1
11
15
DM. CIV.
9P
MY
PV
DC
FO

NOTICE:

Several pages have not been included in this online issue because of privacy concerns dealing with members, their home addresses and collecting interests.

Ads

Wanted: Any cover with the slogan cancel "U.S. POSTAL SERVICE/ OFFICIAL SPONSOR/1992 OLYMPIC GAMES." I will pay 15¢ for ordinary covers and \$1.00 for covers with a PNC. Help me combine my two collecting interests. G. A. Estus, P.O. Box 451, Westport, NY 12993-0451.

Wanted: Up to four plate strips of 9 of the 11¢ Caboose Plate #1 (not precanceled). Send your offer to Frank Covey, 16 Grandview Dr., Macomb, IL 61455-9705.

Wanted: New Issues PNCs. Trade or Buy, face +10% minimum. Write first. Send list to Red Raider Stamps, 4123 W. 18th, Lubbock, TX 79416-6008.

Wanted: TAG SHIFTS and other TAG varieties. Coil strips with and without plate numbers. Describe, send sample; prompt offer. TAG SHIFT HARRY MUEGGENBURG, 3525 Bluff Ct., Carmichael, CA 95608.

Trade: Enhance your used PNC collection by trading singles, 3s, and 5s for my used material. SASE for details! Carl B. Wicklund, 4812 No. 10th, Apt. 315, McAllen, TX 78504.

Trade: Want to trade current PNC 5's with other parts of the United States? Your want/have list for mine. Archie McKee, Box 1532, Ruskin, FL 33570.

For Sale/Trade: Prephosphored PS5 Yosemite #2, 3, and 13 (any three combinations) for a #6, or for \$15 (plus SASE & insurance, if desired). Other limited combinations possible. State choices in descending order. First received get better centering. Lloyd Kopisch, 3832 Columbia Dr., Longmont, CO 80503.

Attention PNC Researchers: Literature bargain of the year for first 15 who order. 1989 and new 1990 Esrati Plate Number Coil Catalogs, plus Denson's Specialized Catalog of PNCs on FDCs, Souvenir Pages, and Ceremony Programs. All three books for \$30 postpaid. Five Esrati catalogs, 1985-6-7-8-9-90 for \$40. **Wanted:** USPS Philatelic Catalogs before April 1982. I have duplicates of most issues since then. Ken Lawrence, P.O. Box 3568, Jackson, MS 39207. Phone: 601-969-2269.

Conducting Survey: 18-cent Flag Coil, Plate No. 6, used only. Please send photocopy of stamp on piece or cover. I will acknowledge with used PNC on cover. John F. Rowin, P.O. Drawer 1078, Edinburg, TX 78540.

****PNC BOOKLETS****

1990 Editions

PNCs ON COVER

A compilation of all known earliest usage dates of PNCs on cover. Emphasis is on commercially used covers with scarcity ratings for each plate number. Also includes separate listings of plate numbers known on FDCs and unofficial FDCs and earliest usage dates of PNCs off-cover. Several covers are illustrated.

\$7.50 postpaid

PNC VARIETIES

A compilation of all known PNC varieties including plate flaws, imperfs, color, printing and inking varieties, mat varieties, numbers on top and tagging varieties. This booklet is an indispensable tool for checking varieties on used or mint strips or stamps on cover. With the price for PNC varieties being what they are, it just might be worth your while to know what to be looking for. Contains over 1,500 listings and over 100 illustrations.

\$12.50 postpaid

****Special****

Both booklets for \$18.00

new

new

Rob Washburn
P.O. Box 840
Skowhegan, Maine 04976

PNC³ Auction

Closing Date: Apr. 21

LOT	SCOTT DESCRIPTION	MIN BID	LOT	SCOTT DESCRIPTION	MIN BID
A. Line Pairs or 6 press # Pairs					
1	1904a 10.9c PC. #3. this is a single. VF	40.00	57	1903a 9.3c Mail W. PC. (2). #1+#3. NG. FVF	21.00
2	0135 20c Official. #1. # on rt. stamp. VF	8.00	58	1904 10.9c H. Cab. (2). #1+#2. FVF	20.00
3	0135 20c Official. #1. # on rt. stamp, crease on top of lf. stamp. XF	11.00	59	1904 10.9c H. Cab. (2). #1 VF, #2 FVF	28.00
4	0135 20c Official. #1. # on rt. stamp. S	13.00	60	1904a 10.9c H. Cab PC. #2. NG. F	10.00
5	1891 18c Flag. #3. VF	230.00	61	1904a 10.9c H. Cab PC. (2). #3 NG. #4 LG. XF	350.00
6	1900 5.2c Sleigh. #2. VF	4.50	62	1908 20c Pumper. #1. 7 line. FVF des.	29.00
7	1901 5.9c Bike. #3. XF	5.00	63	1908 20c Pumper. #11. 7F line. FVF des.	25.00
8	1904 10.9c H. Cab. #2. FVF	4.50	64	1908 20c Pumper. #1. three short perfs rt.. VF	40.00
9	1904a 10.9c H. Cab PC. #4. VF	40.00	65	1908 20c Pumper. #1. VF	30.00
10	1908 20c Pumper. #3. FVF	2.50	66	1908 20c Pumper. #1. S	48.00
11	1908 20c Pumper. (2). #5 VF, #6 FVF	5.00	67	1908 20c Pumper. (2). #5 XF, #13 FVF	6.00
B. Plate Number Strips of 5					
12	1871 18c Flag. #1. one short perf. XF	75.00	68	2005 20c Consumer. #1. XF	48.00
13	1871 18c Flag. #1. XF	120.00	69	2005 20c Consumer. #3. VF line. XF des.	35.00
14	1871 18c Flag. #3. F	75.00	70	2005 20c Consumer. #4. XF	38.00
15	1871 18c Flag. #3. XF	350.00	71	2005 20c Consumer. #4. XF	38.00
16	1891 18c Flag. #4. VF	8.00	72	2005 20c Consumer. (2). #3+#4. brown spot or Imm dia. near #3. VF	60.00
17	1871 18c Flag. #5. VF	5.00	73	2115 22c Flag. #1. FVF	10.50
18	1895 20c Flag. #1. FVF	8.00	74	2115 22c Flag. #1. FVF	---
19	1895 20c Flag. #1. VF	5.00	75	2115 22c Flag. #1. VF	10.00
20	1895 20c Flag. #2. FVF	7.00	76	2115 22c Flag. #3. F	---
21	1895 20c Flag. #2. VF	7.50	77	2115 22c Flag. #7. AVE	---
22	1895 20c Flag. #4. VF	30.00	78	2115 22c Flag. #7. upper edge dented. VF	11.00
23	1895 SAME	30.00	79	2115 22c Flag. (8). #1,2,3,5,7,8,11,+12. VF to XF	50.00
24	1895 SAME	30.00	80	2127a 7.1c Tractor PC. #1. VF	2.25
25	1895 SAME	30.00	81	2136 25c Bread. (2). #1 + #2. VF	5.00
26	1895 20c Flag. #5. XF	3.00	82	2281 25c Bee. #2. rt. stamp no perfs, XF des.	2.00
27	1895 20c Flag. #6. VF	25.00	83	(20). all different, mostly common. face \$4.20. FVF to XF	5.00
28	1895 20c Flag. #6. VF	---	C. Plate Number Strips of 4		
29	1895 20c Flag. #8. FVF	4.00	84	1900a 5.2c Sleigh PC. #3. LG. scarce. VF	20.00
30	1895 20c Flag. (2). #10. FVF	6.00	85	1900a 5.2 Sleigh PC. #5. LG. scarce. VF	20.00
31	1895 20c Flag. #12. XF	7.00	86	1901 5.9 Bike. #4. XF	10.00
32	1890 3c handcar. #3. VF	---	87	1901a 5.9c Bike PC. (2). #5+#6. LG. VF	90.00
33	1878 3c handcar. (4). #1-#4. VF	3.00	88	1903a 9.3c Mail W. PC. #3. LG. VF	12.00
34	1878a 4c Stage. #2. VF	1.75	89	1903a 9.3c Mail W. PC. #4. LG. VF	12.00
35	1897 5c Cycle. (4). #1-#4. XF	5.00	90	1908 20c Pumper. #2. XF line. 3 des.	175.00
36	1897 5c Cycle. #3. T1 T1. VF	2.00	91	1908 20c Pumper. #2. S line. lf stamps 3. rt. stamps XF	200.00
37	1900 5.2c Sleigh. (2). #1-#2. XF	20.00	92	1908 20c Pumper. (2). #7 XF, #8 VF	110.00
38	1900 5.2c Sleigh. #2. VF	5.50	93	2005 20c Consumer. #1. XF	35.00
39	1900 5.2c Sleigh. #3. XF line. FVF des.	35.00	94	2005 20c Consumer. #2. XF	35.00
40	1900 5.2c Sleigh. #5. VF line. FVF des.	80.00	Plate Number Strips of 5		
41	1901 5.9c Bike. #3. F	5.00	95	1891 18c Flag. #1. FVF	240.00
42	1901 5.9c Bike. #3. F	7.00	96	1891 18c Flag. #2. VF	40.00
43	1901a 5.9c Bike PC. #3. LG. FVF line. XF des.	13.00	97	1891 18c Flag. #5. FVF	4.50
44	1901a 5.9c Bike PC. #4. NG. XF line. VF des.	10.50	98	1891 18c Flag. (2). #5. FVF	6.75
45	1901a 5.9c Bike PC. #5. LG. FVF	25.00	99	1895 20c Flag. #1. FVF	35.00
46	1901a 5.9c Bike PC. #5. LG. VF	50.00	100	1895 20c Flag. #2. VF	6.00
47	1901a 5.9c Bike PC. #6. LG. VF	50.00	101	1895 20c Flag. #2. XF	8.00
48	1902 7.4c Buggy. #2. VF	6.50	102	1895 20c Flag. #4. XF	350.00
49	1903 9.3c Mail W.. (2). #1-#2. AVE.	---	103	1895 20c Flag. #8. VF	16.00
50	1903 9.3c Mail W.. #1. VF	7.00	104	1895 20c Flag. (5). #9. XF	25.00
51	1903 9.3c Mail W.. #1. FVF line. VF des.	7.50	105	1895 20c Flag. (3). #10. VF	10.00
52	1903 9.3c Mail W.. #2. FVF	7.50	106	1895 20c Flag. #11. XF	8.00
53	1903 9.3c Mail W.. #4. XF line. FVF des.	10.00	107	1895 20c Flag. #12. VF	6.00
54	1903 9.3c Mail W.. #5. FVF	135.00	108	1895 20c Flag. #12. FVF	6.00
55	1903a 9.3c Mail W. PC. #1. NG. XF	11.50			
56	1903a 9.3c Mail W. PC. #2. NG. VF	10.50			

LOT	SCOTT	DESCRIPTION	MIN BID	LOT	SCOTT	DESCRIPTION	MIN BID
109	1895	20c Flag, (6), #12, VF to XF	30.00	166	2115	22c Flag, (2), #1 VF and #7 FVF	12.00
110	1895a	20c Flag PC, #14, FVF	7.00	167	2115	22c Flag, (3), #2, 19, 22, VF to XF	8.50
111	1895a	20c Flag PC, #14, FVF	16.00	168	2115	22c Flag, (17), all except #1, 3, 7, 9, 13 and 14, from FVF to XF	50.00
112	1895a	20c Flag PC, #14, VF	16.00	169	2123a	3.4c Bus PC, (2), #1 + #2, GIR, XF	3.00
113	1897A	2c Loco., (7), #4, #8, and #10, plus 2 PS3 of #10, all F to FVF	1.75	170	2126a	6c Trike PC, (5), #1, VF	5.00
114	1899	5c Cycle, (3), #1: #3+#4 TY II paper, FVF	2.50	171	2128	8.3c Ambulance, (2), #1 + #2, VF	2.00
115	1899	5c Cycle, (2), #3 + #4, XF	2.50	172	2130a	10.1c Oil W. PC new, #3, FVF	2.25
116	1899	5c Cycle, (4), #1 - #4, VF to XF	6.50	173	2130a	SAME	2.25
117	1900	5.2c Sleigh, #3, FVF line, VF des.	75.00	174	2133a	12.5c Pushcart PC, (5), #1, VF	6.50
118	1900	5.2c Sleigh, #5, VF line, XF des.	85.00	175	2136	25c Bread W., #5, VF	3.50
119	1900	5.2c Sleigh, #3, XF line, VF des.	75.00	176	2136	25c Bread W., (4), #1 - #4, XF	15.00
120	1900	5.2c Sleigh, #5, VF	75.00	177	2136	25c Bread W., (5), #1 - #5, VF	---
121	1900	5.2c Sleigh, #5, VF	60.00	178	2279	25c "E", (3), #1111, 1211, 1222, XF	10.00
122	1900	5.2c Sleigh, #5, XF line, VF des.	55.00	179	2279	25c "E", (5), #1222, VF	12.00
123	1900a	5.2c Sleigh PC, #2, NG, VF	7.50	180	2280	25c Flag, #6, prephos, VF	6.00
124	1900a	5.2c Sleigh PC, #5, NG, XF	8.50	181	2280	25c Flag, #6, prephos, XF	10.00
125	1901	5.9c Bike, #3, FVF	8.00	182	2280	25c Flag, #13, prephos, VF	3.25
126	1901	5.9c Bike, #4, VF	9.00	183	2280	25c Flag, (2), #2 both tags, VF	---
127	1901	5.9c Bike, #4, XF	11.50	184	2280	25c Flag, (3), #7, 8, 10, prephos, VF to XF	12.00
128	1901a	5.9c Bike PC, #5, LG, VF	50.00	185	2281	25c Bee, #1, full serif, no SL, XF	12.00
129	1901a	5.9c Bike PC, #5, LG, XF	35.00	186	2281	25c Bee, (5), #1, FVF	10.00
130	1901a	5.9c Bike PC, #6, LG, F line, FVF des.	25.00	187	2212	22c "D", #2, VF	3.00
131	1903	9.3c Mail W., #1, VF line, FVF des.	---	<u>Longer Plate Number Strips</u>			
132	1903	9.3c Mail W., #2, VF	---	188	1891	18c Flag, PS6, #1, vert. centering S, horz. centering XF to S	450.00
133	1903	9.3c Mail W., (2), #1 + #2, AVE	---	189	1895	20c Flag, PS6, #2, XF	10.00
134	1903	9.3c Mail W., (2), #1 + #2, VF	18.00	190	1895	20c Flag, PS8, #8, S	18.00
135	1903	9.3c Mail W., #3, XF line, FVF des.	20.00	191	1900a	5.2c Sleigh PC, (2), PS9, G3R, #1 VF, #2 FVF	14.00
136	1903	9.3c Mail W., #4, VF line, FVF des.	17.50	192	1902a	7.4c Buggy PC, PS18, TY II paper, G12R, FVF	4.00
137	1903	9.3c Mail W., #5, XF	160.00	193	1903	9.3c Mail W., PS7, #5, FVF	125.00
138	1903	9.3c Mail W., #6, VF line, XF des.	160.00	194	1903a	9.3c Mail W. PC, PS10, #1, G5R, FVF	8.00
139	1903a	9.3c Mail W. PC, #3, LG, XF	15.00	195	1903a	9.3c Mail W. PC, PS10, #2, G4R, VF	10.00
140	1903a	9.3c Mail W. PC, #4, LG, VF line, XF des.	12.00	196	1903a	9.3c Mail W. PC, PS8, #3, GIR, FVF line, VF des.	25.00
141	1903a	9.3c Mail W. PC, #8, G2R, XF	70.00	197	1903a	9.3c Mail W. PC, PS8, #4, GIR, VF	20.00
142	1904	10.9c H. Cab, #1, F line, FVF des.	10.00	198	1903a	9.3c Mail W. PC, (2), PS8, #5 and #6, G3L, VF	8.00
143	1904	10.9c H. Cab, #1, FVF	15.00	199	1904a	10.9 H. Cab PC, PS8, LG, S line, FVF des.	250.00
144	1904	10.9c H. Cab, #1, XF	17.00	200	1904a	10.9c H. Cab PC, PS10, #3, G4L, FVF	190.00
145	1904	10.9c H. Cab, #2, FVF	18.00	201	1904a	10.9c H. Cab PC, PS10, #4, G4L, FVF	190.00
146	1904	10.9c H. Cab, #2, VF	15.00	202	1906a	17c Auto PC, PS16, #3, TY B/A, with two gaps, at 4R + 8L making A/B/A strip, F	16.00
147	1906	17c Auto, (2), #1+#2, TY II paper, FVF	55.00	203	1906a	17c Auto PC, PS16, #4, TY B/A, with two gaps, at 4R + 8L making A/B/A strip, FVF	20.00
148	1906	17c Auto, #5, VF	10.00	204	1906a	17c Auto PC, PS16, #7, TY A/B, G5R, S	8.00
149	1906	17c Auto, (3), #2, 3, and 4, FVF	6.50	205	1906a	17c Auto PC, (2), PS11, #3 + #4, TY B/A, G4R, VF	15.00
150	1906a	17c Auto PC, (2), #3+#4, LG, TY C, FVF	9.00	206	1906a	17c Auto PC, (2), PS10, #5 + #7, TY A/B at 5R, XF	15.00
151	1906a	SAME	9.00	207	1908	20c Pumper, PS6, #1, F line, VF des.	55.00
152	1907	18c Surrey, (2), #2, VF	6.50	208	1908	20c Pumper, (2), PS7, #9 + #10, S	6.00
153	1907	18c Surrey, (2), #2, XF line, VF des.	6.50	209	2126a	6c Trike PC, PS17, #1, G11L, some ink bleed, VF	3.00
154	1907	18c Surrey, #4, VF line, FVF des.	25.00	210	2130	10.1c Oil W. PC new, (5), PS6, #2, VF	6.50
155	1907	18c Surrey, #7, XF	20.00				
156	1907	18c Surrey, (2), #8, XF line, # touches	5.50				
157	1907	18c Surrey, (2), #8, FVF	5.75				
158	1908	20c Pumper, #5, FVF	2.50				
159	1908	SAME	2.50				
160	1908	20c Pumper, #13, VF	4.50				
161	2005	20c Consumer, #1, foot of # cut, VF	60.00				
162	2115	22c Flag, #1, FVF	10.00				
163	2115	22c Flag, #3, folded on LG perf, VF	10.00				
164	2115	22c Flag, #3, XF	36.00				
165	2115	22c Flag, #7, VF	15.00				

LOT	SCOTT	DESCRIPTION	MIN BID	LOT	SCOTT	DESCRIPTION	MIN BID
211	2133a	12.5c Pushcart PC, PS17, #1, TY III paper, 610R, pale green paper var., VF	6.00	249	2115	22c Flag, PSS, #8, split #, FVF	---
212	2281	25c Bee, PS7, #1, S	7.00	250	2132	12c Steamer, PSS, no #, FVF line	4.00
213	2281	25c Bee, PS14, #1, SL 7R, VF	12.00	251	2132	SAME	4.00
214	2281	SAME	12.00	252	2280	25c Flag, PS7, #3, # 100% on bottom, 20% on top, VF des.	5.00
215	2281	25c Bee, PS7, #2, SL 2L, FVF	6.00	<u>D. Misperfs</u>			
216	2281	25c Bee, PS14, #2, square tag, SL 8L, VF	10.00	253	1895	20c Flag, single, thru middle of flag	10.00
217	2281	25c Bee, PS12, #2, square tag, SL 6L, VF	7.00	254	1904a	10.9c H. Cab PC, pair, thru C of Cab	8.00
218	2281	25c Bee, PS8, #2, square tag, SL 2L, VF	8.00	255	2115	22c Flag, pair, 12mm vertical misperf	8.00
219	2281	25c Bee, (2), #2, PS10 round tag FVF, PS12 square tag VF, SL 6L	15.00	256	2132	12c Steamer, PSS, #1, thru 2nd 9 of 1909	8.00
<u>EFC'S AND VARIETIES</u>				<u>E. Constant Plate and Hat Varieties</u>			
<u>A. Imperfs</u>				257	1895	20c Flag, single, reddish brown color variety instead of black, FVF	70.00
220	1895	20c Flag, pair, XF	4.50	258	1895	20c Flag, single, black missing, VF	45.00
221	2115	22c Flag, pair, VF	6.00	259	1895	20c Flag, pair, blue 5mm into field of red stripes, VF	25.00
222	2136	25c Bread W., pair, also slightly miscut, FVF	7.50	260	1895	20c Flag, single, brown instead of black, FVF	70.00
223	2136	25c Bread W., pair, VF	---	261	1895	20c Flag, strip of 5, Flying Footprints variety, VF	13.00
224	2136	25c Bread W., strip of 3, mild miscut, some writing on bottom	12.00	262	1895	20c Flag, PS2, #11, black ink smear at perfs variety, VF	3.00
225	2280	25c Flag, pair, block tag, FVF	15.00	263	1897	1c Omnibus, PSS, #1, constant dot at 1L variety, XF	---
226	2280	25c Flag, pair, prephos, XF	17.50	264	1897	1c Omnibus, PSS, #1, dot in UR, VF	3.00
227	2280	25c Flag, PS3, #6, thin top of lf. stamp 1/4" X 1/2", otherwise XF	300.00	265	1897	1c Omnibus, PSS, #3, plate crack at 2L, F	4.00
228	2281	25c Bee, strip of 3, XF	30.00	266	1897	1c Omnibus, PSS, plate crack at 2L, continuation, XF	4.00
229	2281	25c Bee, strip of 3, VF	25.00	267	1897	SAME	---
230	2281	25c Bee, strip of 4 with SL, XF	195.00	268	1897	1c Omnibus, (2), PSS, #3, cracks in LR at 2L and UR 2L continued, FVF	10.00
<u>B. Whole Plate #s on Top (unless otherwise noted)</u>				269	1897	1c Omnibus, PS11, #3, rocks in road at 8R, F	3.00
231	1898	3c Handcar, (2), PSS, #1 + #2, FVF	15.00	270	1897	1c Omnibus, PSS, #4, bulge in joint line at 3rd perf from bottom, FVF	4.00
232	1906	17c Auto, (2), PSS, #1 cut serif, S line, #3 XF	25.00	271	1897	1c Omnibus, PS8, #4, plate chip on line XF	4.00
233	1906	17c Auto, (2), PSS, #2 + #4, XF	25.00	272	1897	1c Omnibus, PSS, #4, developed state pla chip variety, XF	4.00
234	1906	17c Auto, (2), #1 + #2, incomplete tagging, FVF	20.00	273	1897	1c Omnibus, PSS, #4, early state plate chip variety, XF	4.00
235	1906	17c Auto, (2), PSS, #1 + #2, clear by 1mm, AVE	15.00	274	1897	1c Omnibus, PSS, #4, plate chip, VF	---
236	1906	17c Auto, PSS, #3, some wheels at top, XF	4.00	275	1897	1c Omnibus, PSS, #6, 3 stamps to lf. of PN and 1 to rt., plate crack 1R, FVF	5.00
237	1906	17c Auto, PSS, #4, some wheels at top, XF	4.00	276	1897	1c Omnibus, PSS, #6, plate crack 1R, XF	4.00
238	2125	5.5c Truck, #1, XF	28.00	277	1897A	2c Loco., PS3, #3, smoking "t" var., VF	10.00
239	2128A	8.3c Ambulance PC, PS8, #1, whole # top and bottom, LG, S	50.00	278	1897A	2c Loco., PSS, #3, tail on "t" at 1L, S	15.00
240	2134	14c Iceboat "B", PS7, #2, XF	15.00	279	1897A	2c Loco., PSS, #3, smoking "t" 1L, FVF	15.00
<u>C. Other Miscuts</u>				280	1897A	2c Loco., PSS, #8, falling coal var., FVF	8.00
241	1897	1c Omnibus, (2), PSS, #1 + #2, 50% on top, VF	---	281	1897A	2c Loco., PSS, #8, falling coal variety at 1R, VF	14.00
242	1897a	2c Loco., (4), PSS, #2 + #6, cut #s, VF	4.00	282	1898A	4c Stage, PSS, #2, multiple slashes 2L, XF	8.00
243	1898	3c Handcar, PSS, no #, VF line, design touches	---	283	1898A	4c Stage, PSS, #2, quote marks at "18", FVF	7.00
244	1898	3c Handcar, (2), PSS, #3 + #4, only top of #s show, XF line	---	284	1899	5c Cycle, single, dark green var., VF	7.00
245	1898	3c Handcar, (5), PSS, no #, des. clear, F to FVF lines	15.00	285	1899	5c Cycle, strip of 3, greyish green color variety, VF	4.00
246	1898	3c Handcar, (5), PSS, no #, des. clear, XF lines	25.00	286	1900a	5.2c Sleigh PC, PSS, #2, sleigh whip, FVF	40.00
247	2005	20c Consumer, PSS, #2, # cut with foot of # on top, XF horz. cent.	70.00				
248	2115	22c Flag, PS3, #1, split #, FVF	---				

LOT	SCOTT DESCRIPTION	MIN BID	LOT	SCOTT DESCRIPTION	MIN BID
287	1900a 5.2c Sleigh PC, PS10, #2, GSR, Flyinlg hyphen at 3R, VF	50.00	323	1906a 17c Auto PC, (2), PS11, #3 + #4, G6R, sm. hash mark (mat) in 'S' of 'USA' 7R, FVF	35.00
288	1901a 5.9c Bike PC, PS7, #5, LG, 3 precancel line variety, FVF	50.00	324	1907 18c Surrey, PS5, #5, antenna 1L, XF	14.00
289	1901a 5.9c Bike PC, PS7, #6, LG, 3 precancel line variety, FVF	50.00	325	1907 18c Surrey, PS5, #9, lighting bolt 1L, XF	14.00
290	1902 7.4c Buggy, strip of 5, blown tire v., VF	40.00	326	1907 18c Surrey, PS5, #9, lightning bolt 1L FVF	25.00
291	1903 9.3c Mail W., PS3, #1, weeping 'W' 1L, FVF	25.00	327	1907 18c Surrey, PS5, #10, lightning bolt 1L, XF	14.00
292	1903 9.3c Mail W., PS5, weeping 'W' 1L, FVF	12.00	328	1908 20c Pumper, PS3, smoking 'P' 1L, VF	50.00
293	1903 9.3c Mail W., PS6, #2, tail on 'U' of 'USA' 1R, S	30.00	329	1908 20c Pumper, PS5, #5, smoking engine plate crack, FVF	60.00
294	1903 9.3c Mail W., PS3, #3, smoking 'g' 1L, FVF	45.00	330	1908 20c Pumper, PS5, #10, fire smoke 1R, FVF	7.00
295	1903a 9.3c Mail W., PS5, #3, weeping 'W' 1L, FVF	12.00	331	1908 20c Pumper, PS5, #10, crying 'P', FVF	7.00
296	1903a 9.3c Mail W., PS5, #1, weeping 'W' 1L, VF	25.00	332	1908 20c Pumper, PS2, #11, crack on 'F' or fire at 1R, VF	25.00
297	1903a 9.3c Mail W. PC, PS5, #1 weeping 'W' # stamp G2L, FVF	15.00	333	1908 20 Pumper, PS5, #15, wounded pumper, VF	15.00
298	1903a 9.3c Mail W. PC, PS5, #1, weeping 'W' # stam G2L, VF	18.00	334	2115 22c Flag, single, Erie Blue, XF	15.00
299	1093a 9.3c Mail W. PC, PS5, #1, weeping 'W' # stam G2L, XF	23.00	335	2115 22c Flag, PS5, #5, capitol top missing, VF	10.00
300	1903a 9.3c Mail W. PC, PS8, #2, tail on 'U' of 'USA' 1R, G3L, XF	30.00	336	2115 22c Flag, strip 3, misprint 'SA' in 'USA', FVF	15.00
301	1903a 9.3c Mail W. PC, PS5, #2, tail on 'U' of 'USA' 1R, VF	10.00	337	2115T 22c Flag Test, strip 5, doctor blade, XF	---
302	1903a 9.3c Mail W. PC, PS6, #3, smoking 'G' 1L VF	50.00	338	2123 3.4c Bus, (2), PS6, #1+#2, bluish color, VF	5.00
303	1904 10.9c H. Cab, PS5, #2, dropped transfer at 2L, FVF	20.00	339	2123a 3.4c Bus PC, PS5, #1, missing period, VF	---
304	1904 SAME	20.00	340	2123a 3.4c Bus PC, PS5, #2, missing period, FVF	---
305	1904a 10.9 H. Cab PC, PS5, #2, dropped transfer at 2L, FVF	35.00	341	2123a 3.4c Bus PC, (2), PS6, #1+#2, bluish color var., G2R, XF	5.00
306	1904a 10.9c H. Cab PC, PS5, #2, dropped transfer at 2L, NG, VF	35.00	342	2124 4.9c Buck, PS5, #4, long 'buggy whip', XF	15.00
307	1904a 10.9c H. Cab PC, PS5, #2, chill roller 3L LG, FVF	30.00	343	2124 4.9c Buck, PS8, #4, long buggy whip, S	15.00
308	1905 11c Caboose, pair, break shoe, FVF	---	344	2124 4.9c Buck, PS5, #4, short buggy whip, XF	15.00
309	1905 11c Caboose, strip of 5, break shoe, XF	15.00	345	2124 4.9c Buck, PS5, #4, buggy whip, VF	20.00
310	1905a 11c Caboose PC, strip 5, sitting duck, VF	5.00	346	2124a 4.9c Buck PC, strip 5 with gap, cat scratch, FVF	8.00
311	1905a 11c Caboose PC, strip 5, plate gouge to left of wheel, FVF	---	347	2124a 4.9c Buck PC, strip 5 with gap, cat scratch, VF	8.00
312	1905a 11c Caboose PC, strip 5, break shoe, VF	12.00	348	2124a 4.9c Buck PC, strip 6 with gap, cat scratch, VF	3.00
313	1905a 11c Caboose PC, strip 5, hoseline, FVF	15.00	349	2124a 4.9c Buck PC, PS5, #6, buggy rein, VF	50.00
314	1905a 11c Caboose PC, strip 5, dot over platform XF	5.00	350	2124a 4.9c Buck PC, PS6, #6, buggy whip, G2L, VF	28.00
315	1905a 11c Caboose PC, strip 5, dot below coupling TY II paper, XF	6.00	351	2124a 4.9c Buck PC, PS8, #4, long buggy whip, G2L, XF line, S design	15.00
316	1905a 11c Caboose PC, PS5, #1, multiple black dots on 3 stamps, FVF	3.00	352	2124a 4.9c Buck PC, PS8, #6, crack through and below the #, LG, VF	15.00
317	1906 17c Auto, strip 5, ink splatter across top half of all stamps, FVF	20.00	353	2124a 4.9c Buck PC, (2), PS8, #5+#6, double narrow broken top gap, LG, XF	7.50
318	1906 17c Auto, PS5, #5, reclining comma 1R, FVF	6.00	354	2124a 4.9c Buck PC, (2), PS8, #5+#6, double wide broken top gap, LG, FVF line, VF design	7.50
319	1906 17c Auto, PS6, #7, oil drop 1R, FVF	15.00	355	2124a 4.9c Buck PC, PS7, miscut, design clear of bottom, no #, double bar breaks, GIR, F	10.00
320	1906 17c Auto, PS7, #7, oil drop 1R, XF	15.00	356	2124a 4.9c Buck PC, (3), PS6, split #2's, matched set showing double top, bottom, and top and bottom bar breaks, GIR, VF	15.00
321	1906a 17c Auto PC, strip 6, with gap, most of two words missing of 1f. stamp from mat FVF	11.00	357	2125 5.5c Truck, strip 5, burned rubber, FVF	8.00
322	1906a 17c Auto PC, PS5, #5, LG, TY B, tire skid mark 1R, VF	4.00	358	2126a 6c Trike PC, PS5, #1, rocks in road 1R, XF	7.00
			359	2126a 6c Trike PC, PS5, #1, flying rocks 2L, XF	7.00
			360	2126a 6c Trike PC, PS5, #1, flying rocks 2L, VF	8.00
			361	2127 7.1c Tractor, strip 6, wiper blade flaw, XF	2.00
			362	2127 7.1c Tractor, PS6, #1, broken wheels and wiper blade flaw, FVF	3.00
			363	2127 7.1c Tractor, PS6, #1, broken wheels, XF	4.00

LOT	SCOTT	DESCRIPTION	MIN BID	LOT	SCOTT	DESCRIPTION	MIN BID
428	1891	18c Flag, #4 with 2c reduced at top 1-20-82, purple mach. can., FVF	---	461	2280	25c Flag, #6, 8-21-89, FVF	---
429	1891	18c Flag, #2, 7-6-81, Spring, MA, VF	12.00	462	2280	25c Flag, (10), #8 block, all on #6 bus. covers, most windowed, can. from 4-10-89 to 10-7-89, FVF to XF	5.00
430	1895	20c Flag, #3, untagged, 2-28-83 Columbus OH, FVF	15.00	463	2279	25c "E", #2222, can. 9-26-89, VF	3.00
431	1895	20c Flag, #4, purple zip can. block print corner card, #6 envel., 8-15-82, Miami, VF	6.00	464	2112	22c "D", (2), #1 + #2, #1 can. touches FVF	4.00
452	1895	20c Flag, #5, purple can. 10-10-82, Ft. Worth, rubber stamp corner card, VF	4.00	USED			
433	1895	20c Flag, #1, purple can., 5-10-82, FVF	---	465	1891	18c Flag, #6, sound perfs, medium cancel that is clear of #, FVF	275.00
434	1895	20c Flag, (2), #2, 9-7-82, #3 10-2-82, FVF	---	466	1891	18c Flag, #2, two short perfs, # clear, VF	5.00
435	1895	20c Flag, (2), #2, 5-22-82, #3, 9-30-82, FVF	---	467	1891	18c Flag, (5), #1 - #5, lt. to med. can., #2 four short perfs, all #s clear, VF	10.00
436	1895	20c Flag, (2), #2, 6-8-82, #5, 9-11-82, FVF	---	468	1891	18c Flag, pair, #2 on rt. stamp, cancel touches top of #, FVF	5.00
437	1895	20c Flag, (3), #8, 9, and 10, FVF	5.00	469	1895	20c Flag, (13), #1 - 14, lt. to med. can. all #s clear, VF	10.00
438	1897A	2c Loco., (2), #8 strip of 3, F and #10 split #, VF	---	470	1895	20c Flag, #14, untagged, est. #10-20, VF	5.00
439	DELETED LOT			471	1895	20c Flag, (2), #5 with extra stamp, VF #9 with small tear in top, VF	5.00
440	1907	18c Surrey, #1 on wrinkled, 9-28-81, F	---	472	1900	5.2c Sleigh, (2), #1 + #2, pmk 7-14-84 and 10-4-84, FVF	4.00
441	1907	18c Surrey, #6, 10-13-81, FVF	---	473	1904	10.9c H. Cab, #2 LP, light hinge, FVF	---
442	1907	18c Surrey, #9, 9-9-81, sm. tear behind stamp, F	---	474	1904a	10.9 H. Cab PC, #4, mach. cut, rt. perfs barely visible, FVF	10.00
443	1907	18c Surrey, #9, split # top and bottom, 8-31-81, Miami, windowed, FVF	10.00	475	1904a	10.9c H. Cab PC, #4, mach. cut, short perfs left side, FVF	25.00
445	1908	20c Pumper, #5, one pulled perf, 5-26-83 purple mach. can., cover trimmed bottom, F	---	476	1904a	10.9c H. Cab PC, #4, FVF	50.00
446	1908	20c Pumper, #8, 5-15-82, purple mach. can. F	---	477	1907	18c Surrey, (6), #1 - #6, #1 can. touches #3 pulled perfs on lf., #6 some ink bleed FVF to VF	10.00
447	1908	20c Pumper, #16, rt. edge mach. cut, 1-8-83, F	---	478	1908	20c Pumper, #2, plate crack through "A" and 2, Washburn illus. 88, FVF	25.00
448	2005	20c Consumer, #2, torn rt. edge, 7-30-82 purple mach. can., FVF	---	479	2005	20c Consumer, #2, # clear, VF	5.00
449	2115	22c Flag, (2), #13, 1-18-88, #15, 5-17-88 VF	7.50	480	2115	22c Flag, (21), #1 - #22, no #6, both #8s cancels lt. to med., all #s clear, #14 mach. cut, otherwise sound perfs	5.00
450	2115	22c Flag, no #, Erie Blue, 9-25-86 Erie PA, XF	3.50	481	2124	4.9c Buck, PS5, #4, long buggy whip on # stamp, VF	12.50
451	2115	and 1898 on one cover. 22c Flag #3 and 3c Handcar #2, 9-23-88, VF	5.00	482	2280	25c Flag, #6, VF	2.00
452	2115	22c Flag, (2), #8 two pulled perfs and #8 VF,	---	483	2281	25c Bee, #1 tall, bee shifted rt. so antenna outside frame, VF	3.00
453	2115	22c Flag, (3), #18 short perfs, #19, #20 sm. scuff	---	484		(40) singles, all different, #s clear, sound perfs, FVF to XF	8.00
454	2115	22c Flag, (3), #19, 20, 22, with 3c added 7-1-88 to 7-6-88, FVF	3.00	485		(19) singles all different, 1891 1,2,4,5 1895 1,4; 1901 3; 1903 1,2,4; 1904 1,2; 1907 4,7; 1906a 3; 1908 2,7,8; 2005 3; all F or better	10.00
455	2127a	and 2130a, (2), 7.1c Tractor PC, #1, and 10.1c Oil W. PC, #1 with corner tears on covers, no cancels	---	486		Cut squares (2), PS3 1897 Omnibus #1 VF with PS3 of 1895 Motorcycle #1 XF, circ. can. 6-1-84 Hot Springs Ark.; PS3 1897a 2c Loco. #4 VF with PS3 1896A Coach #3 XF 6-1-84 Hatfield AR, early cancel	4.00
456	2136	25c Bread, (4), #1 to #4, FVF to VF	---				
457	2259	13.2c Coal C., #1 whole # bottom and partial on top, uncan. on a folded bulletin, possibly inspired, FVF	---				
458	2279	25c "E", #2222, 9-26-89, FVF	---				
459	2280	25c Flag, #6, opened 2 sides, FVF	5.00				
460	2280	25c Flag, #6, 7-20-89, FVF	---				

LOT	SCOTT DESCRIPTION	MIN BID	LOT	SCOTT DESCRIPTION	MIN BID
USPS SOUVENIR PAGES			DONATION		
487	2136 25c Bread, pair #1 on rt. stamp, tied with first day cancel, VF	6.00	491	1297 3c Parkman PC, imperf pair, FVF	---
488	2252 3c C. Wagon, PSS, #1 on 2nd stamp from rt. also strip 3 no #, tied first day can., AVE	6.00	BOOKS		
LABELS			492	11 copies of Transportation and Plate No. Coil Issues, by Dr. Joseph Agris. These are collector's editions, leatherette bound and signed by the author, There are several color plates and more than 200 B&W photos, 350 pages in all. The books cover trans. an regular PNCs from inception to the 'E' stamp. Successful bidders will be billed an additional \$3.00 to cover postage and mailer.	18.00
489	1891 18c Flag, from 100 coil with blue 'Flag' label, XF	2.50	OMNISION		
HISTORICAL DOCUMENT			444	1908 20c Fumper, #7, used single on cover, wrinkles UR corner, 5-10-82, F	---
496	Historic PNC document (original) by Dennis Chamberlain on 1905a overprint varieties, with examples PS3, TY 5b GIL, and PS4, TY 5b/a LG, strips valued at about \$50.00. The document accelerated the change to collecting longer strips and gaps. 1905a now 1906a	100.00			

- * Number in () preceding a lot description indicates the number of items in that lot. For example, Lot 11, 1908, has two line pairs.
- * Note that some lots do not have minimum bids as indicated by ---.
- * NG means no line gap and not no gum. Strip 5, strip 3, etc. indicates that there is no plate number. A plate strip would read PS5, PS3, etc..

BIDDING INCREMENTS

BIDDING AREA	RAISE
\$ 1.00 - 9.50	.50
10.00 - 49.00	1.00
50.00 - 97.50	2.50
100.00 - 495.00	5.00
500.00 +	10.00

Irregular bids will be reduced to the next lower level. Each lot will be sold to the highest bidder at one increment over the second highest bid unless the minimum bid is not reached. Any bid not in good faith, in the estimation of the Auction Director, may be rejected. The Auction Director reserves the right to remove any lot from the sale. A set of auction rules is available for an SASE.

GRADING

- AVERAGE (AVE)** NUMBER IS CUT AND/OR DESIGN TOUCHES THE PERFS.
- FINE (F)** THE JOINT LINE, IF ANY, DOES NOT TOUCH THE PERFS AND/OR THE NUMBER TOUCHES THE BOTTOM EDGE. THE DESIGN IS CLEAR OF THE PERFS.
- FINE VERY FINE (FVF)** THE JOINT LINE, IF ANY, TOUCHES THE PERFS AND THE PLATE NUMBER IS CLEAR OF THE BOTTOM EDGE. FOR ISSUES WITHOUT A JOINT LINE, THE NUMBER WILL BE CLEAR OF THE BOTTOM EDGE. IN BOTH INSTANCES, AT NO POINT IN THE STRIP WILL THE DESIGN BE CUT BY THE PERFS.
- VERY FINE (VF)** THE JOINT LINE IS AT LEAST 50% ON THE PERFS, THE PLATE NUMBER IS WELL CLEAR OF THE BOTTOM EDGE. ON ISSUES WITH NO JOINT LINE THE NUMBERS WILL BE WELL CLEAR OF THE BOTTOM EDGE. THE ENTIRE DESIGN WILL BE WELL CLEAR OF THE PERFS.
- EXTRA FINE (XF)** THE JOINT LINE IS WHOLLY WITHIN THE PERFS AND THE OVERALL CENTERING OF THE STAMPS WILL BE CLOSE TO PERFECT.
- SUPERB (S)** ANY JOINT LINE WILL BE PERFECTLY CENTERED WITHIN THE PERFS AND THE STAMPS WILL BE PERFECTLY CENTERED.

BIDDERS

1. Please use the bid sheet provided. I will not accept any bids if not on this sheet. You may use photocopies or extra forms are available for .04 each and a SASE, 10 sheets per 1 oz. of postage.
2. Please sign your bid sheets. This constitutes acceptance of these terms of sale. Unsigned bid sheets will not be accepted.
3. MB stands for Minimum Bid. This is a reserve auction and these MBs must be met as they are set by the consignor. Any bids under the MB are rejected.
4. "BUY" bids are accepted. The bidder agrees to pay one increment over the next highest bid.
5. "OR" bids are accepted on lots that are described as "Same".
6. I do accept bidding limits. However, limits under \$25 are respectfully declined.
7. Lots are sold to the highest bidder at one (1) increment over the second highest bid. In case of a tie, the earliest bidder wins.
8. CHECK YOUR BID SHEETS CAREFULLY! Although I will check on drastic bids (e.g. a \$200 bid for a \$20 item), the PNC3 Auctions are not responsible for any incorrectly submitted bids.
9. Upon closing the auctions, you will be notified of your purchases. Please send payment within 5 days.
10. Postage and insurance cost will be added to each invoice.
11. Any lots not found to be described accurately may be returned within (10) days of receipt in the same condition that they were sent.
12. There is NO BUYER'S PREMIUM at this time.

PNC3 AUCTION BID SHEET - CLOSING DATE: APRIL 21, 1990

Name _____ PNC3# _____
 Home _____ Home Area _____
 Address _____ Phone () _____
 City _____ State _____ Zip _____

You will be billed for Insured Mail (under \$50) or Certified Mail (over \$50) covered by our APS Insurance, plus normal postage.
 Please execute the following bids for me in this mail auction.

All bid sheets must be signed! Signature: _____

Lot #	Bid	Lot #	Bid	Lot #	Bid	Lot #	Bid	Lot #	Bid
-----	-----	-----	-----	-----	-----	-----	-----	-----	-----
-----	-----	-----	-----	-----	-----	-----	-----	-----	-----
-----	-----	-----	-----	-----	-----	-----	-----	-----	-----
-----	-----	-----	-----	-----	-----	-----	-----	-----	-----
-----	-----	-----	-----	-----	-----	-----	-----	-----	-----
-----	-----	-----	-----	-----	-----	-----	-----	-----	-----

CHECK YOUR BIDS CAREFULLY!
 Please limit my purchases to \$ _____ Limits less then \$25, respectfully declined. Bids of bidders with purchase limits will be executed in the order (vertically) in which they list their lots.
 Send completed bid sheets to:
 David Agrodnia, PNC3 Auction, 219 School St., Berlin, NH 03570