

COIL LINE

JOURNAL of PNC³

Vol. III, No. 2

Whole No. 20

February, 1990

Don Eastman, President
24 Bemis St.
Berlin, NH 03570

Tom Maeder, Editor
1604 Bardale Ave.
San Pedro, CA 90731
(213) 833-7937

Linn's Trends

Linn's Dec. 25th issue contained its semi-annual listing of the trends of PNC prices. Included were prices for PS3, PS5, and used singles in F-VF condition.

Greg Manning writes this weekly Linn's feature. The task, of course, is Herculean, so the work-load is parceled out. Dale Hendricks (Dale Enterprises) supplies the PNC data to Manning. Ken Lawrence supplies the used singles data to Hendricks, derived from the price lists of those dealers that sell used singles.

With few exceptions, the market is reported to be stable from the last trends listing of June 26, 1989. The only increases were in 9.3¢ (tagged) #5/6, Surrey #1 and #12, 20¢ Flag #6, and 25¢ Flag #6. All other mint strips were reported as unchanged.

PNCs are only about nine years old, yet we have already seen a maturing. New collectors are joining in, but not at the frenetic pace of two years ago. 1989 was the first year that no new "face different" coil was issued, and the same may be true for 1990. Something approaching boredom seems to be common. Many collectors are taking this "slow time" to fill in, or branch out into a PNC sub-specialty.

The marketplace is stable, yet there are currently many opportunities to fill in tough strips at attractive prices. "Special Offers" are common on dealer lists, and at least two retail dealers are running mail sales: a way of saying "What am I offered?"

In the long run, PNC singles are going to be as desirable as mint strips. Something generally ignored by the PNC fraternity are mint singles. The general U.S. collector will eventually see these numbered stamps as "face different," and will probably follow their pattern as with other U.S. issues and seek mint copies. If that happens, the supply will fall far short of demand.

inside

Letters	2
Briefly	4
Recent Auction Results	5
Buzzline	7
Commercial Covers: Fakes	10
Membership Report	11
Ads	12
PNC ³ Auction Consignment Rules	13
Auction Consignment Sheets	14



Look for this label on the new Yosemite #2, #3 pre-phosphored.

Letters

Regarding Bob Rabinowitz' column in the January issue relative to the Classification and Code of split numbers, there is one error in the fourth paragraph--"and no number at top or bottom, but a Cottrell line is present (code U)"--the (U) should be (O).

Some of the exhibition judges ridicule these issues. They have been quoted as saying "anyone can obtain these strips from most dealers." I urge them to try.

To digress a bit, in reference to the Michael Karen auction, lot #1196--8.3¢ Ambulance photo described as a double plate #1--as nearly as I can tell is a "whole number at the bottom and part of number at top."

Mac Johnson's article "Buzzline" is excellent. I am sure many "Coil Liners" will hunt through their accumulations looking for the "red dot varieties." I would guess still other red varieties will be found. His subsequent color findings will be of interest.

**Frank L. Shively, Jr., M.D.
Dayton, OH**

One thing you might want to mention in Coil Line: precanceled PNC covers can be easily fabricated. I'd rather not go into details, but I can say that a local branch of a national organization in my area does not destroy unused envelopes (complete with contents).

The printed material is sent out from the national headquarters and the local branch is responsible for the purchase of postage and mailing labels.

I'm sure you also know that a stamp mount gillotine can produce the characteristic cut perfs. If I had a 5.2¢ or 5.9¢ PS3 p/c in average condition, it could become a numbered single on cover. It's unfortunate, but true.

**Ed Gould
Roscommon, MI**

Rob Washburn's regular feature this month deals with this topic (page 10). Ed.

Something I have been wondering about for a long time concerns just how many there are of the big ticket items. I have never seen anything written about the subject. Do any of our members have an educated guess as to how many 18¢ Flag #6 in PS5 exist? The same goes for the 20¢ Pumper #2; 18¢ Flag #1, #3; 20¢ Flag #4; and the 10.9¢ precancel #3, #4. Perhaps some of our dealer-members would care to comment.

**Bob Reece
St. Louis, MO**

A census on these items is very difficult to conduct. One was attempted about 18 months ago on the 18¢ Flag #6. This was feasible because there were only two or three people who had ever acquired any in quantity. The conclusion then was that fewer than 300 PS5s exist. 18¢ Flag #1 still shows up if buy ads are put out, but #3 is tougher by far. At STAMPSHOW in August, there were two copies of Pumper #2 available. There is some suspicion about 10.9¢ #3/4. While certainly not common, some believe that one accumulator has an unknown quantity "sandbagged." Ed.

Letters

It would have been much better for my name to be in the philatelic news for better reasons than to buy a fake 5.9¢ precancel strip; but, so be it. A correction must be made, though, so as to make the report factually accurate. Jerry Koeppe did not, immediately, or at any other time, including the following day after the PNC3 meeting when I let him know the fate of the strip, offer to buy it back. He looked at the strip and stated that he was not sure it was a fake. Mr. Koeppe was honest enough to warn me in advance that he did not deal in precancel gap positions as a specialty. All those whom I have discussed this matter with give excellent references of him as a person and as a dealer.

**Pedro Ortegon, M.D.
Bedford, IN**

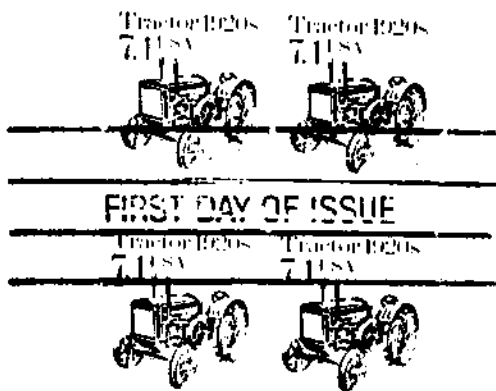
Jerry Koeppe insists that he did offer to buy the strip back, and is sorry if there was a misunderstanding. The offer to buy the strip back, Jerry says, still stands. **Ed.**

I am a new PNC3 member and would like to begin corresponding with other members. My mail box is always open and my word processor is kept warm. I am willing to share any information about my collecting activities and availability of plates from NC and the other Philatelic Centers I have visited in NY, PA, MD, and VA.

I have a few split number coils, 1899 #3/4, and 1908 #5/13. Occasionally I discover large numbers of these varmints and I am uncertain if I should collect all I can afford or leave them for unsuspecting postal patrons. Please advise.

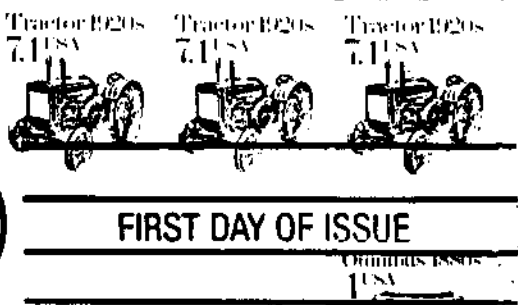
**James A. Courter II
2100-325 Paces Forest Ct.
Raleigh, NC 27612
(919) 787-7159**

Welcome to the swim of things. PNC3 members are a friendly bunch, and would be glad to hear from you. About split numbers, Dr. Frank Shively is the resident guru. (See letter on p.2.) **Ed.**



I am enclosing two copies of FDC of 7.1¢ Tractor. Note the upper FDC has cancellation of 1-24-87 instead of 2-6-87. It was cancelled at Tucson at Airpex 87 with FD cancellation of 8.3¢ Tow Truck. I do not know where I got it.

**Iver Hodesh
Phoenix, AZ**



COIL LINE
Published monthly. Editorial deadline is the 15th.
Tom Maeder, Editor
1604 Bardale Ave.
San Pedro, CA 90731
Change of address notices and club applications:
Eric Russow, Secretary
P.O. Box 7386
Des Moines, IA 50309
Dues should be sent to:
Rob Washburn, Treasurer
P.O. Box 840
Skowhegan, ME 04976
Advertising: full page, \$28;
½ page, \$15; ¼ page, \$8.
Classified ads, 6¢/word.
Members are entitled to
(2) free 40-word ads/yr.

Briefly...

As has been reported in the philatelic press, four denominations of coils are now available in rolls of 10,000. BEP reports that existing plates will be used to print these jumbo rolls; i.e., no plate numbers that exist only on this format. That may be true for now, but what about later? Since philatelic centers will not have these rolls, it could touch off quite a scramble. For those that collect coil labels, this represents a new format. Perhaps someone with a greater understanding of the web than the Editor's could calculate the probable frequency of the splices. This will be a new and interesting collectible item. Thanks to **Richard Schulman** for submitting the item from the Postal Bulletin.

PNC3 Secretary **Eric Russow** requests that when members submit changes of address that they also include their new phone numbers. Phone numbers are for Board use only, and are not part of any published list.

Howard Foster has found a used Yosemite single with all red trees from a mission mixture. Likely source of the stamp: Baltimore.

Thanks for contributions of postage: **John Tison**, \$3.05; **Peter Rider**, \$2.50; **Bob Reece**, \$10.43; **Adam Holterhoff**, \$7.50; **Raymond Hahn**, \$18.00; **Norman McGrattan**, \$12.55; **David Agrodnia**, \$7.69.

Coils of 10,000 Postage Stamps

As a result of a nationwide survey of major mailers, the Postal Service is offering stamps in coils of 10,000. Effective immediately, postmasters may order coils of 10,000 stamps, from the Bureau of Engraving and Printing, in the denominations listed below:

Description	Item Number
10.1-Cent Oil Wagon	7902A
13.2-Cent Coal Car	7959A
16.7-Cent Popcorn Wagon	7962A
25-Cent Flag Over Yosemite	7727

These denominations are based on the response from major mailers and reflect that portion of the current demand for coils of 9,000 stamps that will transfer to coils of 10,000.

Marketing and communications managers should advise major mailers about the availability of the new coils and coordinate with accountable paper personnel to determine ordering quantities. Major mailers should also be advised that splicing (butting/joining the printed rolls together with tape) is necessary to produce the large coils. These splices, which appear randomly throughout the coils, will not jam mailers' stamp affixing equipment and will not affect the adhesive quality of the stamps.

Supply. These coils are not intended for vending equipment. Cag A-G offices requiring bulk quantities of these coils for their mailers should immediately submit Form 3356, *Stamp Requisition—Bulk Quantities*, to the Bureau of Engraving and Printing using the above item numbers. They should submit requisitions in the following ordering quantities: 10 coils, 20 coils, and multiples of 20 coils to the maximum of 540 coils per requisition.

—*Philatelic and Retail Services Dept., 12-14-89.*

Adam Holterhoff has submitted a photo copy of the "discovery cover" of the Yosemite #2 pre-phosphored. It remains the earliest known use: 11/17/89. Plate #3 has since appeared pre-phosphored. The label shown on page 1 (with the 'P' for pre-phosphored) appeared at least as early as plate #8, and is the label on the latest printings of #2 and #3.



Cable Car #2 appeared imperforate some time ago. Three strips of nine, each bearing a plate number, were all that were found. Unnumbered pairs have been selling at pretty lofty heights. Now an imperforate strip of ninety has materialized. As with any item still on sale, be careful.

Part of **Ed Gould's** early post office supply of Yosemite #2 pre-phosphored were rolls that had truncated #2's. This apparently is not a plate flaw, but rather an inking phenomenon, since the missing part of the plate number is raised on the stamp's surface. Has anyone else found this on his #2's?



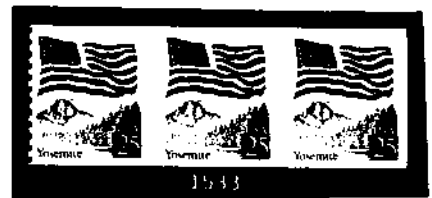
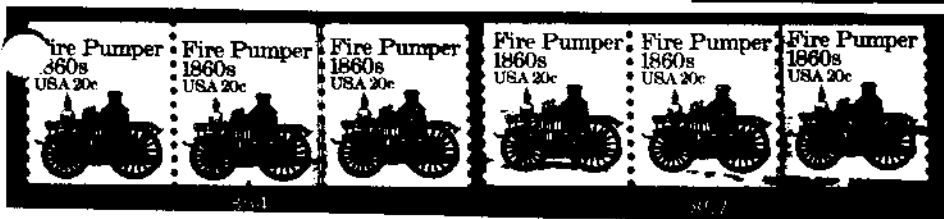
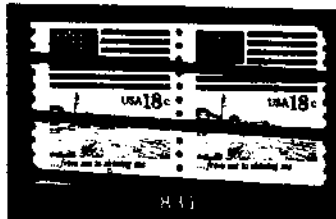
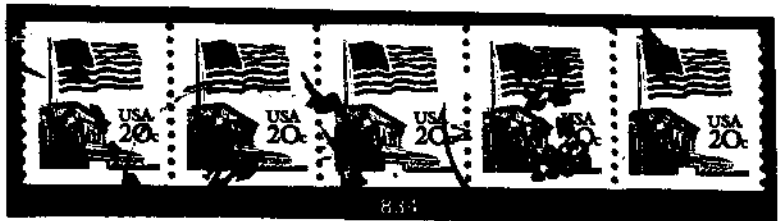
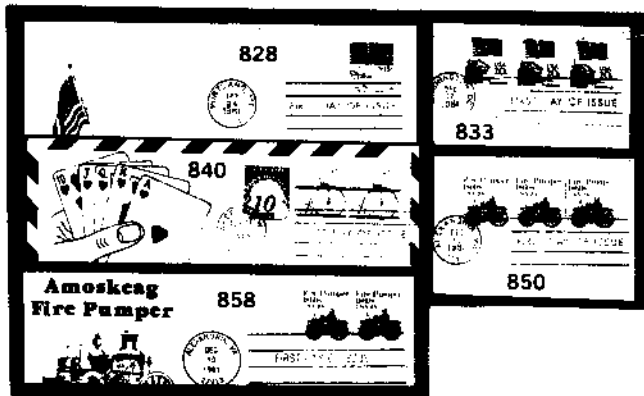
Dorothy Whiting and others wrote after the second PNC3 Auction that they wished that more precancel gap positions had been offered. **Dave Agrodnia** is now accepting consignments for the third club auction. Interesting material makes for a great auction (see pages 13-14).

Recent Auction Results

SAM HOUSTON PHILATELICS

December 13, 1989

828 Cv 1891 18c Flag plate 2 w/1 on House of Farnam FDC, VF clean, unaddressed, scarce. (E)\$700. PH	70-	200-	843** 1903 9.3c Mail Wagon Plate Stp/3 Pl 5, F-VF NH. PH	135-	864 Cv 2124 4.9c Buckboard Line Pair Pl 3 & spt/3 Pl 4 on Artmaster FDC. Pl 4 w/ 'buggy whip' plate crack. VF, clean, unaddressed. (E)\$200. PH	60-	874** 2280 25c Flag Imperf Plate Stp/6 Pl 5, VF-XF NH. PH	260-	
829 Cv 1891 18c Flag Pair Pl 4 on Colorado Silk FDC, number is on R stamp F-VF, clean, unaddressed. (E)\$250. PH	80-	830 Cv 1891 18c Flag Pair Pl 5 on Colorado Silk FDC, VF number on R, clean, cancel touches number but clear & readable, unaddressed. (E)\$150. PH	46-	844** 1903a 9.3c Precancel Plate Stp/3 Pl 4, XF NH. (E)\$30. PH	18-	865 Cv 2124/2128a 4.9c Buckboard & 8.3c Ambulance, both mint & precanceled sgls on one cvr, Kribbe handpainted cachet, no. 2124/2128a. (E)\$250. PH	80-	875 Cv 2280 25c Flag phosphored paper, plate spt/3 Pl 9 on Aircraft FDC, XF clean, unaddressed. (E)\$100. PH	32-
831 1891 18c Flag Plate Pair Pl 6 F-VF, folded between stamps o/w nice. (E)\$700. PH	340-	832 Cv 1895 20c Flag Pair Pl 2 on R on Fleetwood FDC, XF clean, unaddressed. (E)\$150. PH	55-	845** 1904a 10.9c Precancel Plate spt/9 Pl 3, gap 4R Fine+ NH, scarce gap. (E)\$400-500. PH	w/d	866 Cv 2124a 4.9c Precancel spt/3 & gap pair on handpainted Kribbe FDC no. 6 of 10, VF, clean, unaddressed, genuine ccl but AFDCS re-sufficient postage. (E)\$250. PH	80-	876** 0135 20c Official Plate Stp/3 Pl 1, VF NH. (E)\$25. PH	w/d
833 Cv 1895 20c Flag Plate spt/3 Pl 3 on Aircraft FDC, XF clean, unaddressed. (E)\$500-600. PH	145-	834 1895 20c Flag Plate Stp/3 Pl 4, VF-XF w/data 8/24/83 ccl, lgt ccl, scarce. (E)\$175-200. PH	185-	846** 1907 18c Surrey Plate Stp/3 Pl 3, light line F-VF NH. (E)\$25-30. PH	28-	867 Cv 2126 & 2126a 6c Precancel Plate spt/3 Pl 1 combo w/mint spt/4 Pl 1 on Aircraft FDC, a very controversial cvr, maker addressed. (E)\$300. PH	95-	877 Cv Plate Number Coils on FDC's, 16 diff w/Aircraft cachets, incla 7.6c, 8.4c, 10.1c Red ovpt 2, 13c, 13.2c, 15c, 16.7c incla 7.6c, 8.4c, 10.1c Red no.'s & Honey Bee no. 1. All clean, unaddressed. (E)\$100. PH	80-
835** 1895 20c Flag Plate Stp/3 Pl 4, VF NH. (E)\$60. PH	32-	836** 1895 20c Flag Plate Stp/3 Pl 6, F-VF NH. (E)\$50. PH	30-	847** 1907 18c Surrey Plate Stp/3 Pl 4, F-VF NH. (E)\$30. PH	14-	868 Cv 2128var 8.3c Ambulance Plate spt/3 Pl 1 w/low & misplaced number, uncut & clear on Artmaster FDC, VF, clean, unaddressed, scarce. (E)\$200. PH	65-	878 Cv Plate Number Coils on FDC's 20 diff w/House of Farnam cachets incla 3c Conestoga, 7.6c, 8.4c 10.1c Red ovpt, 13.2c, 15c, incla 3c Conestoga, 7.6c, 8.4c 24.1c, 25c Flag no. 1, 2, 5, incla 3c Conestoga, 7.6c, 8.4c Clean, unaddressed. (E)\$200. PH	125-
837 Cv 1900 & 1900a 5.2c Precancel Line Pair Pl 1 on U604 FDC w/ mint spt/3 Pl 2 w/KMC Venture cachet, very scarce, clean, unaddressed. (E)\$1000. PH	300-	838 Cv 1900 & 1900a 5.2c Precancel Line Pair Pl 2 on U604 FDC w/ mint spt/3 Pl 1, hand colored KMC Venture cachet, very mint spt/3 Pl 1, hand colored addressed. (E)\$1200. PH	350-	848 Cv 1907 18c Surrey Line Pair Pl 10 on Artmaster FDC, Fine, clean, unaddressed. (E)\$350. PH	110-	869 Cv 2225 7.6c Carreta Plate spt/3 Pl 2 on Artmaster very scarce w/less than 10 believed to exist, clean, unaddressed. (E)\$500+. PH	155-	879 Cv Plate Number Coils on FDC's 15 diff w/KMC Venture cachets (better cachet) incla 3c Conestoga, 5.3c, 7.6c, 8.4c, (better cachet) incla 3c 21c, 24.1c, 25c Flag no. 1, 6, all unaddressed. (E)\$150-200. PH	85-
839** 1900 5.2c Sleigh Plate Stp/3 Pl 5, F-VF NH. (E)\$85. PH	55-	840 Cv 1901a 5.9c Precancel Pair on Kribbe handpainted FDC, VF, clean, unaddressed. Genuine ccl but AFDCS expertising clean, unaddressed. Genuine postage & incorrect use of postage due. (E)\$200. PH	60-	849 Cv 1907 18c Surrey Plate Stp/3 Pl 5 on Aristocrat FDC, VF, clean, unaddressed. (E)\$400. PH	80-	870 Cv 2228 4c Stagecoach Re-engraved Plate spt/3 Pl 1 combo w/ 1898A Pl 2 on FDC, large Washington DC ccl which covers 1898A Pl 2 on FDC, large. (E)\$800. PH	250-	880 Cv Plate Number Coils on FDC's 6 diff w/House of Farnam/Cover Craft (premium, limited edition) cachets. Incla 3c Conestoga (premium, limited edition), unaddressed. (E)\$90-100. PH	30-
841** 1901a 5.9c Precancel Plate Stp/3, Fine NH. (E)\$40. PH	w/d	842** 1901a 5.9c Precancel Plate Stp/3 Pl 6, F-VF NH. (E)\$30. PH	36-	850 Cv 1908 20c Pumper Plate spt/3 Pl 1 on Aristocrat FDC, F-VF, clean, unaddressed. (E)\$300. PH	80-	871 Cv 2256 8.4c Wheel Chair Plate spt/3 Pl 2 on House of Farnam/Cover Craft Limited Edition FDC, XF, clean, unaddressed. (E)\$500. PH	140-	881 Cv Plate Number Coils on FDC's, 26 diff w/Artmaster cachets, incla 3c Conestoga, 5.3c, 7.6c 8.4c, 10c, 10.1c red ovpt, incla 3c Conestoga, 5.3c, 7.6c no. 2, 20.5c, 21c, 24.1c, 25c incla 3c Conestoga, 5.3c, 7.6c spt/3 or 5. Clean, unaddressed. (E)\$200-250. PH	185-
				851** 1908 20c Pumper Plate Stp/3 Pl 1, Fine NH. (E)\$35. PH	14-	872 Cv 2280 25c Flag Plate spt/5 Pl 3 on House of Farnam FDC, VF, clean, unaddressed. (E)\$100. PH	55-	882 Cv Plate Number Coils on FDC's, 26 diff w/Artmaster cachets, incla 3c Conestoga, 5.3c, 7.6c 8.4c, 10c, 10.1c red ovpt, incla 3c Conestoga, 5.3c, 7.6c no. 2, 20.5c, 21c, 24.1c, 25c incla 3c Conestoga, 5.3c, 7.6c spt/3 or 5. Clean, unaddressed. (E)\$200-250. PH	185-
				852** 1908 20c Pumper Plate Stp/5 Pl 1, F-VF NH. (E)\$125. PH	75-	873 Cv 2280 25c Flag Plate spt/5 Pl 4 on Artmaster FDC, VF, clean unaddressed. (E)\$100. PH	55-	883** 2280 Stp/3 w/perfs at L & balance imperf VF NH. (E)\$75. PH	70-
				853 Cv 1908 20c Pumper Plate spt/3 Pl 2 on Aristocrat FDC, F-VF, clean, unaddressed, scarce w/ spt/3. (E)\$700. PH	w/d			884** 2280 Imperf Stp/6 XF NH. (E)\$50. PH	42-
				854** 1908 20c Pumper Plate Stp/3 Pl 2, VF NH, number clear btm. (E)\$175. PH	80-			885** 2280 Imperf Stp/6 w/plate in center, VF NH. (E)\$50-75. PH	55-
				855 Cv 1908 20c Pumper Line Pair Pl 5 on Fleetwood FDC F-VF, clean, unaddressed. (E)\$75-100. PH	28-				
				856 Cv 1908 20c Pumper Line Pair Pl 6 on Fleetwood FDC, VF-XF, clean, unaddressed. (E)\$100. PH	32-				
				857 1908 20c Fire Pumper Plate spt/3 Pl 7, lgt ccl, VF. (E)\$60-75. PH	24-				
				858 Cv 1908 20c Pumper Line Pair Pl 8 on Bazaar FDC, F-VF, clean, unaddressed. Rare believe less than 10 exist. (E)\$2000. PH	600-				
				859 1908 20c Fire Pumper Line Pair w/Pl 8, VF. (E)\$30. PH	w/d				
				860** 1908 20c Pumper Plate Stp/3 Pl 11, F-VF NH. (E)\$35. PH	30-				
				861** 2005 20c Consumer Plate Stp/3 Pl 1, VF NH. (E)\$45. PH	40-				
				862** 2005 20c Consumer Plate Stp/3 Pl 2, Fine NH. (E)\$35. PH	w/d				
				863** 2005 20c Consumer Plate Stp/3 Pl 4, F-VF NH. (E)\$40. PH	24-				



N E W A N D I M P R O V E D!!!

**** PNC BOOKLETS ****
1990 Editions

PNCs ON COVER

A compilation of all known earliest usage dates of PNCs on cover. Emphasis is on commercially used covers with scarcity ratings for each plate number. Also includes separate listings of plate numbers known on FDCs and unofficial FDCs and earliest usage dates of PNCs off-cover. Several covers are illustrated.

\$7.50 postpaid

PNC VARIETIES

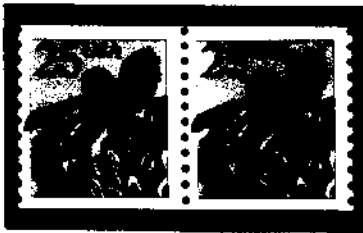
A compilation of all known PNC varieties including plate flaws, imperfs, color, printing and inking varieties, mat varieties, numbers on top and tagging varieties. This booklet is an indispensable tool for checking varieties on used or mint strips or stamps on cover. With the price for PNC varieties being what they are, it just might be worth your while to know what to be looking for. Contains over 1,500 listings and over 100 illustrations.

\$12.50 postpaid

****SPECIAL** Both booklets for \$18.00**

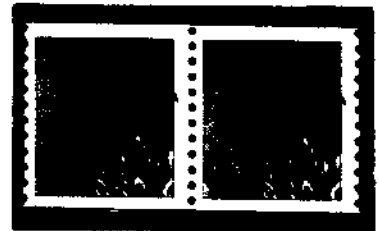
Rob Washburn
P.O. Box 840
Skowhegan, Maine 04976

(Both of these booklets will be printed in very limited quantities, and if future editions of these booklets are printed, it won't be until at least 1992.)



Buzzline

Mac Johnson
2509 No. Campbell, #291
Tucson, AZ 85719



(Third in a Series)

It is hoped that the rainbow of colored Repetitive Plate Varieties in this month's article will provide some relief for those of you seeing red after last month's marathon. This installment will concern itself with apparitions in yellow, green, and blue.

This particular group of colored varieties are not always as easy to spot as red on a light yellow or white background. Blue is nowhere near as prominent or striking on any background, while yellow against white can be a challenge for the sharpest of eagle-eyed flyspeckers.

A note about spotting these little gems: I can spot many of these varieties with normal vision, but I made it a practice early on to scan every Honeybee with a 3.5x glass in order not to miss some of the more obscure varieties. If you use a monocular glass, try developing the technique of keeping both eyes open. The brain will tend to mask the unaided image after a time, giving you a clear, squint-free image. Or you may wish to join me in purchasing a pair of those flip-up/down binocular eye-pieces used by jewelers and fly tyers to perform their craft.

And now for this month's illustrations. Next month we'll conclude with the black and white RPVs.

Editor's Note: When Mac first approached me with his data, I thought that his varieties were purely transitory. Mac's examples have all come from covers, and he has multiple examples of each. I am not much of a fly-specker myself, but after last month's report on red RPVs I started to notice some of the varieties on my own strips. Mac has called them "repetitive," but they may well be more constant than we suspect. Mac should be commended for his research. Even if you are not personally fascinated by this data, you could help the research by examining your mint strips (especially long ones) and report to Mac any position and plate number for any of the varieties that you might see.

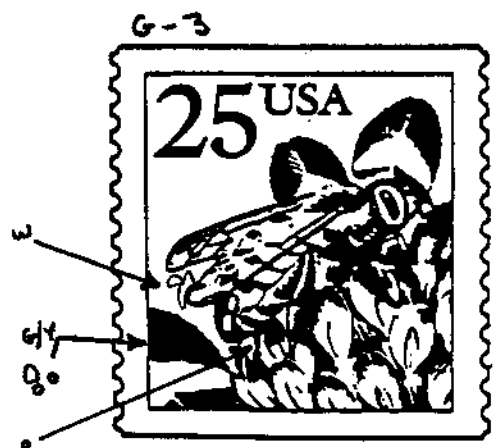
green



VERTICAL GREEN BLOB ON L.L. LEAF ABOUT 1mm. IN FROM MARGIN; GREY LINE AT LEFT



GREEN 'SPEAR', WITH YELLOW EDGING, ON LOWER LEFT LEAF.



GREEN GLOBS, YELLOW EDGED, ON L.L. LEAF; WORM-LIKE GHOST BETWEEN WING TIPS; RED BLOB ON FLORET BELOW BEE'S ABDOMEN.

yellow



YELLOW SPOT AT LOWER EDGE OF LIGHT BAND ON L.L. LEAF.



TWO YELLOW SLASHES ON RIGHT EDGE OF L.L. LEAF.



SMALL YELLOW CIRCLE ON THE LEAF BELOW 'USA'.



YELLOW LINE AT THE RIGHT WITH 2 RED DOTS APPROX. 7-8 PERFS UP.



YELLOW WORM IN BOTTOM RIGHT MARGIN NEXT TO BLUE/RED SEAM LINE AT RIGHT.



YELLOW WORMS IN UPPER RIGHT MARGIN NEXT TO DOUBLE BLUE SEAM LINE AT RIGHT. PROBABLE CONTINUATION OF Y-5.



YELLOW WORM IN UPPER RIGHT MARGIN NEXT TO BLUE SEAM LINE, WITH HINTS OF RED, AT RIGHT.



YELLOW SPOT APPROX. 7/8 FULL PERF UP, JUST RIGHT OF GREY SEAM LINE AT LEFT.



TWO YELLOW SPOTS IN L.L. MARGIN

Y-9a



SAME AS Y-9 WITH THE ADDITION OF A SMALL RED DOT TO THE RIGHT OF THE '2'.

Y-10



YELLOW SPOT IN MID-RIGHT MARGIN OPPOSITE BLACK DOT IN SECOND FLORET DOWN.

Y-11



YELLOW SPOT IN TOP RIGHT MARGIN, BLACK DOT IN 2ND FLORET DOWN.

Y-12



YELLOW SPOT IN L.R. MARGIN, RED DOT TO LEFT OF U.L. LEAF.

Y-13



YELLOW TO ORANGE SEAM LINE AT RIGHT WITH 'BLUE SHIFT' ON RIGHT LEAF AT FRAME LINE.

B-1



BLUE SPOT TO THE U.R. OF U.L. LEAF.

B-2



BLUE SLASH BY U.L. CURVE OF L. WING

blue

B-3



BLUE SPOT IN BOTTOM MARGIN BELOW 5TH FLORET FROM RIGHT

B-4



LONG BLUE SLASH, NEXT TO YELLOW SEAM LINE AT LEFT, FROM THE 3RD TO 5TH PERF. DOWN.

COMMERCIAL COVERS: FAKES

By Rob Washburn

Recently, I was asked by a fellow PNC collector to examine some precancelled PNC commercial covers. The covers were an impressive batch, about 15 covers in all, and included precancelled 4c, 5.2c, 9.3c and 10.9c PNC issues. As is normally the case with precancelled covers, none of the PNC stamps were tied to the envelopes by cancellations. Being untied, there is always the possibility of fakes by replacing the original stamps with PNCs. I, therefore, carefully scrutinized the covers.

First, I checked the stamps. Visually, they all appeared to have the same coarse surface as soaked used PNCs. The stamps even felt the same as soaked PNCs. The texture and appearance of stamps found on authentic precancelled PNC covers is much smoother. As I was checking each stamp's paper fibers with my 30X magnifier, I came across some crackly white "gum" between and outside of the perfs. This "gum" was not like that which you sometimes see around perfs. Instead, the "gum" looked like dried Elmer's-type glue. I found this crackly glue on all of the covers. There was also other evidence of tampering. A few covers had evidence that part of the upper right outer surface of the envelope had been peeled off, probably when the original stamp was removed. A few of the envelopes had bends and creases in the upper right of the covers. When I checked the stamps under shortwave ultraviolet light, I found a few covers where the stamps appeared to have thin or excessive glue on portions of the backs of the stamps. I even found one cover with a wavy machine cancel on the stamp, which was unnoticeable to the naked eye, but stood out dramatically under shortwave ultraviolet light.

By now, you know the verdict on this batch of covers--FAKES! All of the covers had soaked replacement PNCs placed on them. BEWARE!

I'm still looking to hear from you with reports of the names of the mass mailers of PNC precancelled commercial covers. Please let me know the full name of the mailer and the plate number coil used.

I'm also planning to do an article later this year on how a PNC "commercial cover" should be defined. Viewpoints vary on this one. Purists totally exclude any PNC covers to or from a stamp collector or dealer. Others feel a cover to or from a stamp collector or dealer can still be "commercial" as long as it was carried through the mailstream and served some commercial purpose. I'd be interested to know what you think, so if you have any thoughts on this, please drop me a line.

Next month's article will be on the 5.2c Sleigh. No new earliest known usage reports this month!

Membership Report

Resigned

Robert Bergstrom (#463)
William Joly, Jr. (488)

Rupert Grey (421)
John Grover (299)
James Hartford (125)
David Hendricks (169)
Terence Hines (414)
Ron Hirsch (448)
Thomas Iverson (324)
Thomas Jillson (452)
Norman Johnson (282)
Pam Johnson (110)
James Kenney (434)
Karen Kern (287)
Ralph King (243)
Eugene Krieg (435)
Nelson Kugler (458)
Alan Lavendier (273)
Francis Lipa (379)
Milton Maas (498)
Alan Malakoff (303)
John Matthews (167)

Stuart Morrissey (269)
John McBride (209)
James Nolan (271)
Dawn Petersen (385)
Debbie Pezzillo (202)
David Pratt III (154)
George Richards (200)
James Sadler (228)
Richard Sandford (204)
Gerald Shannon (145)
E. C. Simonton (192)
Harry Smith (357)
Edward Tan (461)
Robert Thiel (494)
Newell Thompson (113)
Michael Tilley (104)
Lawrence Tropea (289)
Dolph Ulrich (276)
Wayne Youngblood (306)
David Zerbian (372)

Non-Renewal of Dues

Lenard Abbott (412)
Noel Ahrens (236)
Michael Albert (184)
C. Alice Archie (136)
F. M. Arndt (107)
Richard Baim (504)
John Beirne (320)
James Booth (442)
Allen Bush (317)
Valery Countryman (224)
Nello Cristiano (415)
Robert Ferguson (422)
Caxton Foster (432)
John Foxworth, Jr. (14)
James Gaan (401)
Hugh Gary (492)
John Goudie (127)

New Applicants

Leslie Sheldon Everett, WA
Mark Caruthers Derby, CT
Charles Morton Signal Hill, CA
Ed Quinn, Jr. Valley Cottage, NY
Alan Lieberman Cranford, NJ
Lathrop P. Smith, III Belgrade, MT
Thomas Wheeler Galion, OH
Carl Ditsch Leavenworth, KS
G. J. Michels, Jr. Amarillo, TX
Howard Chaskes Beechhurst, NY
D. John Shultz Lawrence, KS
Ronald Czaplicki Bellflower, CA
Joseph Simmons Longport, NJ
Rev. William Means Covina, CA
Joan Boyd Shinnston, WV

Changes of Address

Dennis Chamberlain
P.O. Box 753
Collierville, TN 38027

David A. Clark (#304)
P.O. Box 060807
Palm Bay, FL 32906
(formerly Ft. Monmouth, NJ)

David A. Clark (#459)
133 Breckenridge Drive
N. Augusta, SC 29841
(formerly Simpsonville, SC)

Cynthia Cupal
1111 SW Midland Lane
Port St. Lucie, FL 34953

James Inbody
3268 E. Malapai Dr.
Phoenix, AZ 85028

Frederick D. Johnson, II
3633 Lytle Road
Shaker Heights, OH 44122

Tony Maves
425 Southwood Dr.
Horace, ND 58047

C. Alan Worth
1321 Marshall St., #512
Redwood City, CA 94063

Membership Summary

413 January Report
+15 New Applicants
- 2 Resigned
-57 Non-Renewal

369 Currently Active

Ads

Wanted: Approximately 20 collectors to purchase 18¢ Surrey rolls of 500 in post office. Plate #s still unknown. Limit one roll per collector. Cost: \$95.00 plus postage--my house to yours. SASE for confirmation and details. Ed Gould (winter address), 707 Alcala, Lehigh Acres, FL 33936.

Wanted: 25¢ Flag #6 PS5. Will trade mint singles, pairs, PS3, PS5, gaps, used singles, used strips, and covers. Bob Reece, Jr., P.O. Box 10680, St. Louis, MO 63129.

Wanted: TAG SHIFTS and other TAG varieties. Coil strips with and without plate numbers. Describe, send sample; prompt offer. TAG SHIFT HARRY MUEGGENBURG, 3525 Bluff Ct., Carmichael, CA 95608.

Wanted: New Issues PNCs. Trade or buy, face +10% minimum. Write first. Send list to Red Raider Stamps, 4123 W. 18th, Lubbock, TX 79416-6008.

Trading: Bees #1 11L and 7R, #2 11L, 9L, 5L, 2L and 1L for positions I need. SASE for complete descriptions. David Agrodnia, 219 School St., Berlin, NH 03570.

Selling: my Honeybee "seam-line" strips, 29 all different, plate #s 1 and 2. \$300.00 firm. Please call or write. Glenn Pollock, 3527 Telfair Way, Atlanta, GA 30319. (404) 851-9013 after 6pm.

Honeybee Coil official cacheted show card. Waterbury fancy cancel "Large Bee" franked with Honeybee coil PNS 3 or 5. \$5.00 each. Send orders to: Waterbury Stamp Club, P.O. Box 581, Waterbury, CT 06720. Available 1/28/90.

Finally Found! 7.6¢ Carreta plate #3. Available now direct from the finder. PS5 VF \$2.90, VF/S \$3.75. (PS3 less 15¢) Orders filled in 24 hours. Shultz, 4129 Wimbledon Drive, Lawrence, KS 66047. (913) 841-2249.

Mail Auction: many exciting one of a kind PNC items--tagging errors, covers, varieties, used, and more. LSASE for bulletin. Michael Lipson, Box 2543, Reston, VA 22091.

(Members are entitled to two free 40-word insertions per year. We encourage you to avail yourself of this service.)

Discount PNC's available. Order by lot number. No 'Rain-checks'. Send check or money order to: Lee Warzala, 10 St. Mary's Court, Springfield, IL 62702 (217) 753-4045 to check availability.

*

LOT DESCRIPTION

1. 20¢ Pumper #2, PS-5, F-VF. \$450.00
2. 18¢ Flag #1, PS-7, F-VF, No gum, damaged. \$80.00
3. 12.5¢ Pushcart #1, Type I paper, SP-5, F-VF, 100 copies. \$125.00
4. 12.5¢ Pushcart #1, Type I paper, XF, PS-5, 25 copies. \$40.00
5. 12.5¢ Pushcart #1, Type II paper, PS-5, F-VF, 30 copies. \$30.00
6. 11¢ Stutz #1, Ps-5, F-VF, 50 Copies. \$50.00
7. 11¢ Stutz #1, PS-5, XF, 10 copies. \$15.00
8. 11¢ Stutz #2, PS-5, F-VF, 50 copies. \$50.00
9. 11¢ Stutz #2, PS-5, XF, 15 copies. \$20.00
10. 18¢ Flag #2, PS-3, Average. \$7.00
11. 20¢ Pumper #8, PS-2, F-VF, gum disturbed. \$7.00
12. 17¢ Auto P/C Type A #3 & #4, F-VF, Line gap, PS-6, 3 sets. \$16.00
13. 17¢ Auto P/C Type B #3, PS-5, Ave.-Fine, 2 copies. \$20.00
14. 20¢ Flag #14, PS-5, VF, 3 copies. \$4.50
15. 4¢ Stagecoach P/C #3 & #4, PS-8, Line gap, XF-S. \$10.00
16. 4¢ Stagecoach P/C #3, PS-5, 2L gap, F-VF, 3 copies. \$3.00
17. 4¢ Stagecoach P/C #5 PS-5, 1L gap, F-VF, 3 copies. \$6.00
18. 4¢ Stagecoach P/C #6, PS-5, Line gap, F-VF. \$2.00
19. Used 10.9¢ P/C #3 & #4, singles, Machine cut. \$40.00
20. Used 5.2¢ Sleigh #5, singles, Line gap, 2 copies. \$30.00
21. Used 5.2¢ Sleigh P/C #3, single, 1L gap. \$15.00
22. 4.9¢ #3 & #4, PS-3, F-VF, Venture FD covers. \$12.00
23. 4.9¢ #3, PS-3, and #4, PS-2, on one Artmaster FDC, VF-XF. \$15.00
24. Wandering bee on reg. cover, no plate number, 11-14-88. \$3.00

PNC³ Auction

Third PNC3 Auction-Now Accepting Consignments-Closing Date: Feb. 21, 1990

CONSIGNORS AND CONSIGNMENTS

1. I examine all lots for accuracy in description and pricing prior to sale.
2. Consignments will be acknowledged by letter or postal card. Any lots rejected will be returned to the owner with an explanation.
3. I use my own discretion when considering the breaking down of any lots into multiple lots. Some larger accumulations and/or lots with a group of mixed material may sell better in more than one lot. Any changes will be recorded and a notice will be sent.
4. All consignments will be sold in the next possible auction. You will be notified of any delays.
5. Please use the PNC3 consignor form for each lot sent. This is the only form that will be accepted. Please be sure to complete all underlined headings accurately. You may use photocopies of the form or extras are available for .04 each and a SASE. Reminder that they are 10 forms per oz. of postage. **THIS IS COST.**
6. Keep descriptions as brief as possible. I only have so much space for each lot, so keep the descriptions to a minimum. However, I don't underemphasize any lots by not providing enough of a description.
7. The cut off date for accepting material is approximately one month before the date of issue of the COIL LINE. For example, material for a May auction would have to be in by the end of March. This will give me time to put together the auction and Tom Maeder time to prepare the copy.
8. I close out the Auctions on a specified date that will appear in the COIL LINE. After I receive the checks from successful bidders, I return a check to you for your consignments.
9. I return any unsold lots for your final settlement.
10. There is a .25 fee for each unsold lot.
11. I charge consigners a 10% commission on all sold lots with a .50 minimum charge per lot.
12. Consigners will pay for return postage and insurance on all unsold lots, etc. that are returned.
13. As we are now affiliated with the APS, we have in place an insurance policy that will insure all lots while in my possession as Auction Director.
14. Insurance is strongly suggested in the sending of consignments.
15. Please use your membership number. This is removed prior to the sending of lots to buyers as with most auction houses.

GRADING

AVERAGE (AVE) NUMBER IS CUT AND/OR DESIGN TOUCHES THE PERFS.

FINE (F) THE JOINT LINE, IF ANY, DOES NOT TOUCH THE PERFS AND/OR THE NUMBER TOUCHES THE BOTTOM EDGE. THE DESIGN IS CLEAR OF THE PERFS.

FINE VERY FINE (FVF) THE JOINT LINE, IF ANY, TOUCHES THE PERFS AND THE PLATE NUMBER IS CLEAR OF THE BOTTOM EDGE. FOR ISSUES WITHOUT A JOINT LINE, THE NUMBER WILL BE CLEAR OF THE BOTTOM EDGE. IN BOTH INSTANCES, AT NO POINT IN THE STRIP WILL THE DESIGN BE CUT BY THE PERFS.

VERY FINE (VF) THE JOINT LINE IS AT LEAST 50% ON THE PERFS, THE PLATE NUMBER IS WELL CLEAR OF THE BOTTOM EDGE. ON ISSUES WITH NO JOINT LINE THE NUMBERS WILL BE WELL CLEAR OF THE BOTTOM EDGE. THE ENTIRE DESIGN WILL BE WELL CLEAR OF THE PERFS.

EXTRA FINE (XF) THE JOINT LINE IS WHOLLY WITHIN THE PERFS AND THE OVERALL CENTERING OF THE STAMPS WILL BE CLOSE TO PERFECT.

SUPERB (S) ANY JOINT LINE WILL BE PERFECTLY CENTERED WITHIN THE PERFS AND THE STAMPS WILL BE PERFECTLY CENTERED.

Consignment Sheets

(Photocopy this page. A separate sheet is required for each lot.)

PNC3 AUCTION #3 - CLOSING DATE: FEBRUARY 21, 1990

PLEASE NOTE: Until such time as we can develop a totally acceptable definition of a commercial cover, all covers will be listed as FDC or Other Covers. I hope that we can come up with something that we can all live with by the time of the next auction.

PLEASE, use a separate CONSIGNOR'S SHEET for each lot (no index cards). Do not fill in the spaces under the headings that are not underlined. If you do not state a minimum bid, your material will go to the highest bidder regardless of the price realized.

New members may obtain a copy of the auction rules by sending a #10 SASE to: David Agrodnia, 219 School St., Berlin, NH 03570

PNC3 CONSIGNOR'S SHEET - CLOSING DATE: FEBRUARY 21, 1990

Name _____	PNC3# _____
Home _____	Home Area _____
Address _____	Phone() _____
City _____	State _____ Zip _____

<u>Lot #</u>	<u>Scott #</u>	<u>Description of material</u>	<u>Minimum Bid</u>
--------------	----------------	--------------------------------	--------------------

It is assumed that all mint material is never hinged, with undisturbed gum, sound perfs, etc.. If otherwise, please, note under Faults. Used materials are assumed to be unhinged, with sound perfs, etc.. If otherwise, please, note under Faults.

Centering (see grading notes) Faults (describe)

(circle)

AVE F FVF VF XF S

INSTRUCTIONS: Fill in all boxes with underlined headings . Leave the others blank. Attach a CONSIGNOR'S SHEET to each lot submitted. For more sheets, photocopy this sheet or extra forms are available for .04 each and a SASE. 10 for 1 oz., 20 for 2 oz.,

Buyer # Hammer

PNC3 AUCTIONS, David Agrodnia, 219 School St., Berlin, NH 03570

For Auctioneer's Use