

PNC³



COIL LINE

October 1990

Vol. III, No. 10

Whole No. 28

Rob Washburn, President
P.O. Box 840
Showhegan, ME 04976

Harold Brown, Editor
909 Parker St.
Bowling Green, Ohio 43402

Letter from President Rob Washburn

I thought it might be nice if the President periodically communicated with the members concerning PNC3 matters of importance.

The year ahead could be a big one for the PNC3 and PNCs in general. A rate change in 1991 should mean many more PNC issues to chase after, and should stir up new interest in this area of philately. Our membership should easily pass the 500 mark.

As our membership continues to grow, our organization must evolve and adapt to meet the challenges ahead. Consequently, in the next few months, you will be asked to vote to revise our Charter since the old one

needs to be overhauled.

Looming ahead will also be the formation and implementation of an ethics committee to deal with some of the problems which unfortunately sometimes arise involving members, dealers, etc.

We must also find a way to keep our costs down and our revenues up so that we can continue to offer the programs which make PNC3 membership worthwhile.

I am looking forward to the year ahead and serving as your President. No organization can be lead by one person alone. That's why we have an Executive Board and standing com-

mittees. We can use your help. Just spread the word about the PNC3. If every member recruited just one new member to join the PNC3, just imagine what we could accomplish.

Also, if you are interested in serving on a committee or have any suggestions or comments, please do not hesitate to drop me a line or give me a call. Thank you

Rob Washburn, President PNC3
P.O. Box 840
Skowhegan, ME 04976
(207) 474-8389 (evenings)

Editor's corner

My apologies to Karen Maddox for incorrectly reporting in the September Coil Line she had been elected a director of PNC3. Only the top two candidates, A.S. Cibulskas and Karen Weigt, were elected.

Congratulations to former Coil Line Editor Tom Maeder for the Silver-Bronze Medal awarded Coil Line during the APS Writers Unit 30 Breakfast. The meeting was part of APS STAmPsHOW 90 held in Cincinnati.

The PNC3 meetings at Cincinnati gave the editor a chance to meet several of the people who before had been voices on the phone or signatures on letters. This is a truly interesting group. The intensity for PNCs of some of the members caught me by surprise. But I think I now know why PNCs have become such a popular aspect of philately. The intensity is infectious. The 1991 annual meeting will be held as part of the 1991 APS meeting in Philadelphia. I don't want to sound like the travel and tourism bureau but a trip to Philadelphia can be combined with a lot of the surrounding area, especially for anyone interested in U.S. history. That's if any of us can tear ourselves away from stamps.

Assistant Postmaster General Gordon Morrison sat in on a portion of the PNC3 annual meeting in Cincinnati. Morrison denied published reports the Transportation Coil Series will be replaced by a series on American musicians. However, he did say the series may be replaced by late 1992.

Though he didn't say what subjects are being planned for the 1991 rate change, PNC collectors can expect to be adding new items.

He said a key issue to what subjects are chosen for stamps revolves around what "won't offend the mail-using public." He later joked he suspects we'd all like to see the (plate) numbers eliminated. He received the expected reaction of loud "no's" from the audience.

Dr. Robert Rabinowitz suggested World War II as possible coil subjects and Ken Lawrence suggested coil stamps for the second and third ounce rate on up to the priority rate. Lawrence also suggested commemorative-sized

(Continued on page 2)

Index

Table of 25c Falg rolls sizes.....	2
Minutes of PNC3 Annual Meeting.....	3
Minutes of PNC3 Board Meeting.....	4
Forgery corner.....	5
Study of 25c Falg covers.....	6
Membership update.....	6
Constant plate varieties.....	7-10
Auction results.....	10 & 22
Used PNC grading system.....	11 & 12
PNC3 Auction Catalog.....	13-18
USPS master order list.....	20
Commercial covers 6c Tricycle.....	21 & 22

(Editor's corner from page 1)

coils. Karen Weigt suggested animals on stamps, saying animals create an interest among youngsters.

Rabinowitz also wondered why there have been so few new plate numbers in the past several months. He asked Morrison if BEP was re-using plates. Rabinowitz collectors want new numbers and of course, dealers want to sell the new numbers.

Morrison said USPS has never taken the approach to issue new plate numbers just to issue new plate numbers. He said new plates are created when needed by the BEP. While USPS has been seeking ways to control costs, Morrison said he was not aware of any special BEP effort to get more use out of existing plates.

Morrison admitted there are some serious problem associated with the Philatelic Division's move to Kansas City. He said there was a shortage of employees (many did not relocate) and the backlog of orders is large. "You're right, we're not doing a good job," he said.

Steve Esrati revealed the 1991 "Plate Number Coil Catalog" will be his last such effort. Nearing retirement age, Esrati said he plans to continue his bimonthly publication of "The Plate Number" but does not want to continue to spend as much of his life tied to updating the catalog.

PNC3 is considering taking an active role in keeping the catalog alive beyond 1991. There are some likely heavy expenses but the PNC Board is going to explore the possibilities. Those attending the meeting were nearly unanimous in showing support for keeping the catalog alive.

Ideas and suggestions for this endeavor should be forwarded to the officers. The editor would also be interested in letters on the issue so that the implications and possibilities can be aired with all of the membership.

Other actions of the board announced at the annual meeting are:

- A reinstatement fee of \$2 will be imposed for anyone who drops membership and then decides to rejoin PNC3.

- All debts, including membership, advertisements and other business are to be paid in cash (check). Postage will continue to be accepted as a donation but not as payment of debt to PNC3.

- The December issue of Coil Line will probably include a copy of the proposed revised charter. The board discussed some of the revisions at its Cincinnati meeting. A ballot for approval will also be included.

- \$100 was approved to support the administrative costs of the Junior Philatelists of America.

- Members interested in volunteering for publicity, seeking advertising, helping with auctions and the various aspects of Coil Line, should contact the president.

This issue also contains Secretary Gene Trink's minutes from the Board Meeting and Annual Meeting.

Other items:

- The copy deadline for the November Coil Line will be Oct. 10.

- Though much of the 1991 USPS stamp program has been announced, little has been released about coils. Hopefully, there will be some word in time for the November issue.

COIL LINE

Published as the monthly journal of the Plate Number Coil Collectors Club, also known as PNC3.

The deadline for copy to be considered for the next issue is the 15th of the month, except as otherwise noted. The deadline for November publication will be Oct. 10.

President
Rob Washburn
P.O. Box 840
Skowhegan, ME 04976

Distribution
Alan Thomson
P.O. Box 91
Northwood, NH 03261
Mailed under Bulk Rate Permit No. 1, Northwood, NH 03261

Change of address notices and membership applications should be sent to:
Gene Trinks, Secretary,
3603 Bellows Ct.
Troy, MI 48083

Dues (\$10 per year) and other payments should be sent to:
Richard Beecher, Treasurer,
10779 Woodbine St.
Los Angeles, CA 90034

Advertising rates are \$42 for a full page, \$22.50 for one-half-page and \$12 for one-fourth page. The cost is payable with the order. Checks should be made out to PNC3. Members are entitled to two, 40-word classified ads per year at no charge.

25c Flag roll sizes

Plate	Size
1	B
1i	B*, C*
2	A, B
2i	B*, C*, D*
3	A, B, C
3i	B*, C*, D
4	A, B, C
5	A
5i	A
6i	A
7	A
7i	A
8	A, B, C
8i	A, B*, C*
9	A
9i	A
10i	A
11i	A
13i	A
14i	A

Key
 A — 100
 B — 500
 C — 3,000
 D — 10,000

i — Phosphored paper
 * — "P" on label

Minutes of PNC3 Annual Meeting

The meeting was held in room 234 of the Cincinnati Convention Center and was called to order at 2 p.m. by Vice President George Kuhn in the absence of President Don Eastman. Executive Committee members present were A.S. Cibulskas, Gene Trinks and Karen Weigt. A total of 44 members and guests were present. Among our guests was Assistant Postmaster General Gordon Morrison.

Kuhn began the meeting with introductions of noted persons and the outgoing Executive Committee. He extended thanks to the outgoing committee members for their valued services and also gave thanks to Dave Agrodnia, Tom Maeder, Alan Thomson and all others who volunteered time and service to the club during the last year.

In the absence of the secretary, Kuhn read the minutes of the last Annual Meeting. He also read the treasurer's report in the absence of the treasurer. A.S. Cibulskas and Karen Weigt provided a report of the Executive Committee meeting held earlier in the day.

Ken Lawrence opposed the reported Executive Committee action of establishing the editorial policy of Coil Line, stating that the editor should have total control of the content of the publication. He also called attention to the fact that the club had not followed through on its stated plan to assist him in updating his copyrighted slide program (now in possession of the APS).

Others, including Steve Esrati and Pedro Ortegon also commented on the need to exclude private bickering from the club publication.

Trinks gave a brief report on the Charter Revision effort, and stated the proposed timetable for publishing the new Bylaws is December and voting on same by February 1991.

Kuhn introduced Assistant Postmaster General Gordon Morrison, who solicited ideas from the group concerning possible design replacements for the Transportation Series of coils. He stated the reported use of "musicians" was inaccurate. He also stated it was desired to have subject matter with wide appeal and low potential controversy.

Dr. Robert Rabinowitz suggested the topic of World War II, and asked if the BEP had taken any recent steps to modify its printing technology resulting in higher printing totals for each recent plate number. Morrison stated he knew of no such activity and agreed to pose the question to BEP for response. Other suggestions for designs included more transportation (air and sea) and animals. Also suggested were coils issue to cover rates higher than single ounce first class letters. Morrison then departed the meeting to attend to other business.

Kuhn then introduced Steve Esrati, who reported his intention to discontinue publishing the PNC Catalog after the 1991 edition. After discussion, the membership was polled concerning its will for the Executive Committee to pursue the possible publication of the catalog. Support was nearly unanimous, with no objections.

Kuhn announced the result of the recent elections:

Robert Washburn, president; Thomas Maeder, vice president; Gene Trinks, secretary; and Richard Beecher, treasurer. Re-elected to another term as Executive Members At-Large were A.S. Cibulskas and Karen Weigt. Don Eastman will succeed Gene Trinks as Past president to complete the Executive Committee.

Kuhn then called for volunteers to assist the new of-

(Continued on page 6)

Have you been missing something?

Every two months for more than five years **THE PLATE NUMBER** has published all there is to know about PNCs. Readers have learned:

- All about forgeries.
- All about the latest research.
- All about prices.
- All about PNC collectors.

It has more than 400 loyal readers (with a 75% renewal rate).

Its contributors include A.S. Cibulskas, Kim Cuniberti, Ken Lawrence, Richard Nazar, Stephen G. Esrati, Scott F. Smith, Dr. Robert Rabinowitz, Wayne Youngblood, and David Barrie-LaVergne, the top researchers in PNCs.

THE PLATE NUMBER is the only source for BEP plate-activity reports.

THE PLATE NUMBER updates the PNC Catalog.

When PNC news is made, it's in **THE PLATE NUMBER**.

Not convinced? Send \$1 for a sample copy.

Wish to subscribe? It's only \$13 to PNC3 members (\$2 off). But to get your news fast, we suggest adding \$3.50 for first-class mail.

Also, you may wish to get the 1990 PNC Catalog.

"My PNC handbook and encyclopedia will continue to be the Plate Number Coil Catalog," said Dr. Rabinowitz.

The price is \$16.50 postpaid to PNC3 members (\$17.65 in Ohio).

Stephen G. Esrati
P.O. Box 20130
Shaker Heights, Ohio 44120-0130

Minutes of PNC board meeting

PNC3 Executive Committee
August 25, 1990
Room 226 of the Cincinnati Convention Center

Board Members present: George Kuhn, presiding; A.S. Cibulskas, Karen Weigt, Gene Trinks.

Board Members represented by proxy: Don Eastman (proxy to A.S. Cibulskas), Rob Washburn, (proxy to K. Weigt), and Eric Russow (proxy to A.S. Cibulskas).

Invited guests: Richard Beecher, Harold Brown, Steve Esrati.

The meeting was called to order at 10:03 a.m. by Vice President George Kuhn. As part of the welcoming remarks he cited the Rotarian principles of the "Four Way Test" and called on the board to conduct PNC3 business guided by these principles.

A quorum was declared to be present in that four members and three proxy votes were present. The minutes of the previous Board Meeting (held at World Stamp Expo) were read (by Kuhn for Russow). It was noted that the previous board action to declare the term of office of elected officers to be effective on January 1 was in conflict with the Charter. The minutes were so annotated and accepted as annotated. The Treasurer's report was read (by Kuhn for Washburn) and accepted. The treasury balance as of 7/31/90 was \$2,974.18.

Announcement by Kuhn (in Esrati absence) of Esrati's decision to discontinue publication of the PNC Catalog after the 1991 edition. Discussion of the possibility that PNC3 might assume publication of same. Concern expressed of the complexity of the task and of the financial commitment required. Decision to table the matter for the incoming board. Decision to solicit the members at the Annual Meeting to determine the will of the membership regarding whether the board should consider assuming the task.

Kuhn offered congratulations to Dave Agrodnia for getting the auction department off the ground, and expressed the hope that we can continue with at least two auctions yearly.

Kuhn announced that Alan Thomson was working on three separate slide programs, one for general audiences, one for advanced groups and one juniors.

Trinks reported on the nominations and election process. The newly elected officers are Robert Washburn, president; Thomas Maeder, vice president; Gene Trinks, secretary; Richard Beecher, treasurer. Newly-elected members at large are A.S. Cibulskas and Karen Weigt. Don Eastman will assume the post of past president to complete the board for next year. A certified copy of the tally sheet was submitted for inclusion in the club records.

Kuhn announced that PNC3 had been invited to hold the next annual meeting at COLOPEX (Columbus, Ohio). It was decided to decline on the basis that COLOPEX is held in the spring and the PNC3 meeting is normally held in the August time frame (and when possible, in conjunction with Stampshow). Trinks to respond and propose that we hold a regional meeting instead.

Trinks to write letter of appreciation to outgoing president Don Eastman.

Trinks reported on Charter Revision activities, with credit to Kuhn and Weigt for major contributions to the first draft of a totally new set of Bylaws which are much more comprehensive in scope. A tentative timetable was established to publish the new bylaws in the December issue of

Coil Line and vote in February.

Steve Esrati arrived at about 10:50 and was asked to review his intentions concerning the PNC Catalog. He also reviewed his sales figures for the past six years (ranging from 430 books the first year to 800 in the third year, with 600 sold last year, and an average of about 650 units each year). He gave many details of the procedures, contributors and equipment he uses and commented that he has an individual who would be willing to take over the book, but requires financing to acquire the computer equipment necessary (estimated to cost about \$5,000). He concluded his presentation and left the meeting.

Kuhn solicited comments from Coil Line Editor Harold Brown, and stated that it is the policy of the PNC3 Executive Committee not to restrict the Editor in the conduct of Coil Line business, but that the Executive Committee does have ultimate responsibility for the publication, and that it should reflect the highest principles of the hobby. Brown agreed, and stated that he was most pleased with the cooperation thus far of the members and that he would like to have more submittals from members for inclusion in the publication. Trinks requested that copies of the publication be sent to the philatelic press to assist in publicity efforts.

A motion by Trinks to increase the limit at which two signatures are required on club checks from \$200 to \$250 was rejected and the subject was tabled for consideration by the new Executive Committee.

A decision to not accept postage in lieu of cash or checks as payment for obligations to the club was unanimous.

A reinstatement fee of \$2 was established for lapsed memberships.

A decision was taken to recommend that the incoming President immediately establish an Ethics Committee to develop club policies on handling fraudulent or questionable practices.

The logo developed by Rich Nazar was adopted as the official club logo provided that Nazar authorizes unlimited use of the design by the club. Trinks to write and request same.

A request to adopt the Code and Classifications system developed by Frank Shively was tabled pending more information from Shively on the meaning of the request.

The next annual meeting was established for the Stampshow '91 to be held in Philadelphia in August 1991.

It was decided to procure and award to the outgoing president a plaque or similar token of appreciation for his services. The decision was made to make a similar award to the previous president.

A donation of \$100 to the Junior Philatelists of America to be used in their general fund for the good of junior philately was unanimously approved.

A decision was reached to have incoming officers Tom Maeder and Richard Beecher audit the financial records upon Beecher assuming the responsibilities of treasurer.

A decision was reached to recommend that the incoming president appoint a Publicity Committee without delay.

Other matters tabled for action by the incoming Executive Committee were as follows: Acquisition of a computer program to assist in handling auction recordkeeping; new applicant screening process; regionalization; spending the APS recruiting credit; life memberships; estate advisory activities; award for contribution to PNC philately.

The meeting adjourned at 12:20 p.m.

Forgery corner

PNC3 member Joann Lenz shared her experience with the following authentic and forged copies of the 20c Flag over Supreme Court Plate No. 14 precanceled strips with the group at Cincinnati. Can you tell the fake from the real thing?

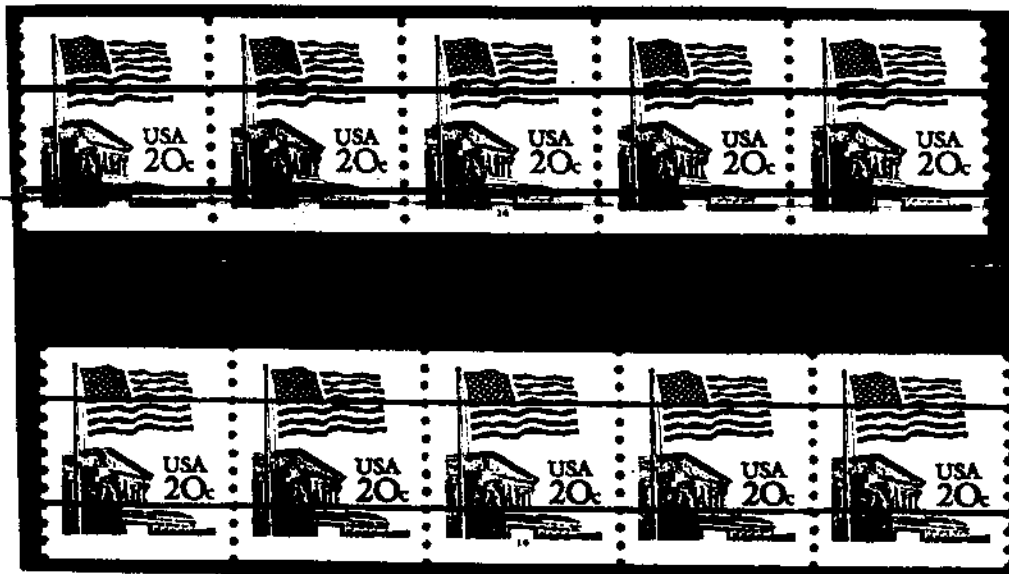
Note: The reproduction is 20 percent larger than normal size.

The strip on top is authentic. The line is .8mm wide. The space from top to bottom is 12.5mm

The strip on the bottom is the fake. The line width is .5mm and the distance from top to bottom is 12.8mm.

Joann is taking the issue up with the dealer. Meanwhile, members are encouraged to know what they are buying. The experience has intensified the discussion about the need for a PNC3 Ethics Committee.

If you have a forged item and would like to share examples and information with PNC3 members, send the material to the Coil Line Editor. It will be returned as soon as appropriate reproduction copy can be obtained.



Lighthouse®

1989 SUPPLEMENT to „SF“ Hingeless
PNC STRIP ALBUM
available throughout the U.S. as from June 1990

1989 Supplement for Album Part 2
(B, C/D & Andreotti Press (REGULARS and PRECANCELS))

Lighthouse Item

No. of Pages

Price

STRIPS (PS 3 or PS 5/PS 7) hingeless, with SF mounts

N 53 PNC SF/1989

9

US\$ 25.00

Note: No 1989 supplements issued this time for the ordinary and hingeless MINT or USED SINGLES albums. In view of relatively few new issues during 1989, plus the availability of quite a number of blank squares (with mounts), supplements will only be furnished again next year. It is the interest of both collectors and the publishers to get along with a sensible minimum of so-called „replacement pages“.

Some time during July 1990, after the aforesaid supplements will have become available in North America, the complete sets of album PAGES, too, will be up-dated to include the new pages and will thereafter be supplied as follows:

PNC Sets of Pages	Period	No. of Pages	Regular Pages without mounts	SF-Hingeless Pages with mounts
PNC STRIPS PS 3/PS 5/PS 7 (Regulars & Precancels) Part 1: COTTRELL Press/Joint line/Reg. overall tagged Part 2: Other presses/No joint line/Reg. block tagged	1981/85	62	—	53 PNC/1 SF US \$ 170.00
	1981/89	40	—	53 PNC/2 SF US \$ 111.00
PNC SINGLES (Regulars & Precancels) Part I: COTTRELL Press/Joint line/Reg. overall tagged Part II: Other presses/No joint line/Reg. block tagged	1981/85	13	53 CS/I US \$ 20.00	53 CS/I SF US \$ 39.00
	1981/88	14	53 CS/II US \$ 21.50	53 CS/II SF US \$ 42.00
PERFECT 2-post turn-bar Binder with „USA“ on spine			DP-53 US \$ 53.00	
EXCELLENT 13-ring Binder (without name of country on spine)			DE-red US \$ 54.00	
SLIP CASE			KA-red US \$ 24.00	

It's a matter of personal preference whether to choose a PERFECT or an EXCELLENT binder. In view of the lengths of particularly the PS 7 mounts, the editors feel inclined to recommend the DE-red binder for items No. 53 PNC/1 & 2 SF, since the pages are getting bent less when being turned over.

Please place your order with your favorite dealer or else contact LIGHTHOUSE PUBLICATIONS, INC., P. O. Box 705, Hackensack, NJ 07602-0705. Canadian residents will request Canadian-Dollar-Prices from their Canadian dealer or contact LIGHTHOUSE PUBLICATIONS (CAN.) LTD. New Address: 255 Duke St., Montreal, Que. H3C 2M2, Canada.

A study of 25c Flag commercial covers

For the past several years I have been able to examine the supposedly empty envelopes in which payments and correspondence have been mailed to a medium-sized local bank. In addition to searching for commemoratives, I have made a special effort to find PNCs. I do find them and almost all are in denominations that pay the current first class rate.

A tabulation for the findings of PNCs of Scott No. 2280, Flag Over Yosemite, might be of interest.

Plate	Block	Phos.
1	20	0
2	7	50

Ads

TRADE or Sell - PNCs 5-3-LP. Some 22c covers 8-18-19-22. Also Coil labels. Joe Valinsky, RD2 Box 40, Shermansdale, PA 17090.

NEW AND IMPROVED!! Lots of new listings and ILLUSTRATED!! 1990 editions of PNCs on COVER and PNC VARIETIES, PNCs ON COVER - "a must for cover collectors." \$7.50. PNC VARIETIES "the most comprehensive list of PNC varieties available anywhere," \$12.50. Special: Save \$2 when you buy both-\$18.00 post-paid. Rob Washburn, P.O. Box 840, Skowhegan, ME 04976.

LABELS LABELS

50 different . . . \$50.00

Includes 10 3,000 labels

25 different 3,000 labels . . . \$50.00

Order both lots: No duplicates

Postpaid, insured. Cash, check, Visa M/C

Want lists solicited for specific labels

Dr. Robert Rabinowitz

37-CL Stanwick Place
Stamford, CT 06905
Phone 203-325-2312
FAX 203-359-1357

3	15	21
4	51	
5	157	18
6		6
7	25	289
8	128	18
9	28	396
10		39
11		69
13		16
14		21

It should be noted that for the first two weeks after the stamp was seen, no PNCs were found. During the next month PNCs would appear once in 200 covers.

Occasionally I have counted the covers bearing this stamp on a weekly basis and have found there are currently about 1,500. From this and previous counts, I estimate a total of about 150,000 have been examined. The total found, slightly less than 1,400, is less than half what one would expect. Don't we all wonder what happened to the rest?

Julius G. Clark
5241 Todds Road
Lexington, Ky. 40509
PNC3 No. 216

Membership

New applicants:

David Schwartz
P.O. Box 762
Groton, CT 06340

Gerald Blankenship
539 North Gum Gully
Crosby, TX 77532

Annual meeting

(Continued from page 3)

ficers in carrying forward the many tasks and activities the club will be engaged in.

It was announced that the Executive Committee had voted to support the Junior Philatelists of America with a donation to the JPA general fund.

The selection of the 1991 STaMpsHOW as the site of the next annual meeting was announced. It will be held in Philadelphia in late August.

Joann Lenz requested information on club policy concerning estate advisory activities, and reported on the recent discovery of fake precancels of the 20-cent flag. She was referred to APS for estate services, since the club has not yet formulated a policy regarding same.

Ken Lawrence pointed out that many clubs specifically establish a "trading period" as an agenda item for the annual meetings and suggested we consider the same for future meetings.

Kuhn adjourned the meeting at 3:25 p.m., in favor of trading and conversation among members, as the room was available until 4 p.m.

Respectfully submitted,

Gene C. Trinks,
Secretary

Constant plate varieties

By A.S. CIBULSKAS
28 Westwood Road
Stamford, CT. 06902

This category is essentially a catch-all for anything not fitting into any of the categories treated separately in previous articles. Items to be presented include gouges, scratches, dropped/raised transfers, blisters, chips and similar items.

1c Omnibus

Chipped plate on plate No. 4. About a 1.5mm verticle chip essentially parallel to the joint line and about one-third of the way up from the bottom.

2c Locomotive

Plate No. 3, high transfer at 3L. The entire design is shifted upwards.

Plate No. 8. "Falling Coal I." Plate gouge near the joint line to the left of the left rear corner of the tender at 1R.

Plate No. 8. "Falling Coal II." Two plate gouges near the joint line in the upper right white area of the stamp at 1R.

4c Stagecoach

Plate No. 1. Multiple slashes within the stagecoach body. Most are 1 to 2 mm long and are about at a 45-degree angle from the horizontal. Most pronounced at 1L and 2R.

Plate No. 1. Plate gouge on 1R stamp. The gouge is at the top left of the t in stagecoach.

Plate No. 2. Multiple slashes as describe for plate No. 1 except located on 2L stamp.

5.2c Sleigh

Plate No. 1. Dot over the h of sleigh on 1L and dot over the g of sleigh on 1R. Known both on tagged and P/C.

Plate No. 3. Circle over s in sleigh on 1R. Probably a plate blister.

5.5c Star Route Truck

Plate No. 1, tagged. "Highway Line" or "Burned Rubber." Mark below the rear wheel at 2R about 1-2 mm long and at about a 45-degree angle from the horizontal.

5.9c Bicycle

Plate No. 3 tagged. Plate gouge at 1L at about 4 o'clock below the s of the date and close to the joint line.

6c Tricycle

Plate No. 1, tagged. "Skid" mark at 2L. Horizontal mark about 1.5mm long centered below the front wheel.

Plate No. 1 P/C.* Two gouge-like marks at about 8 o'clock position of the left rear wheel near the perf area at 1R.

Plate No. 1, P/C.* Gouge-like mark outside right rear wheel at about 2 o'clock at 3L.

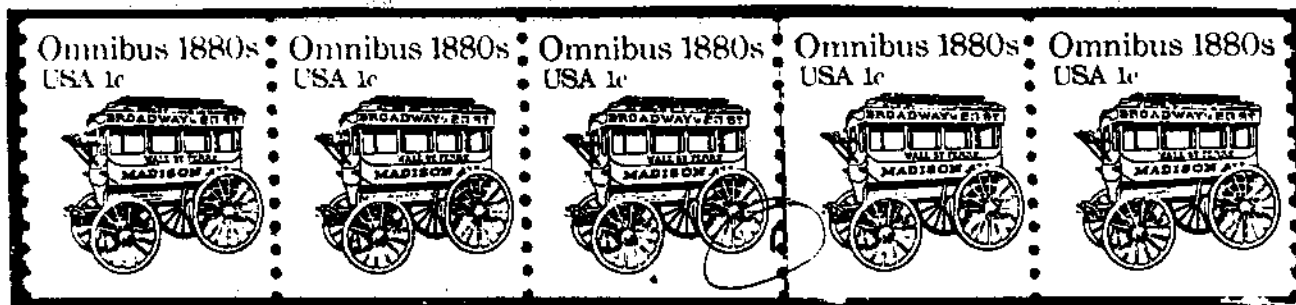
8.3c Ambulance

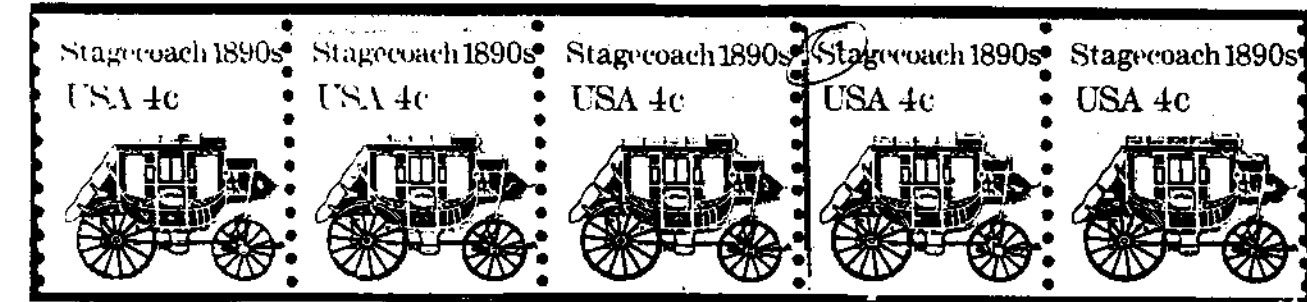
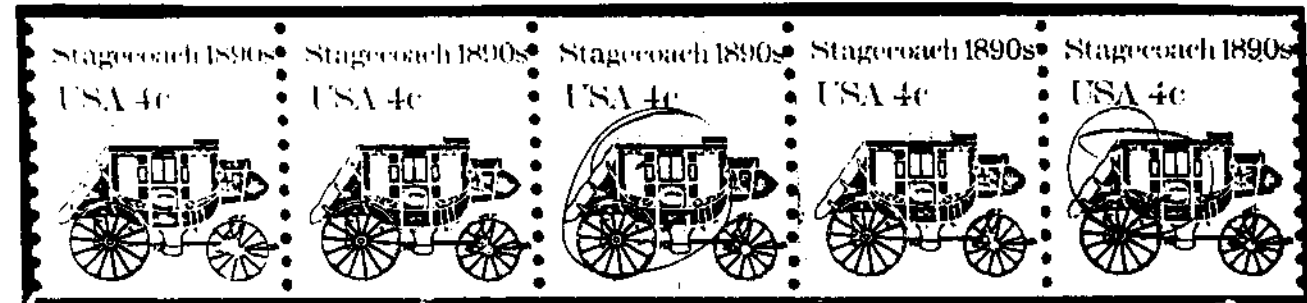
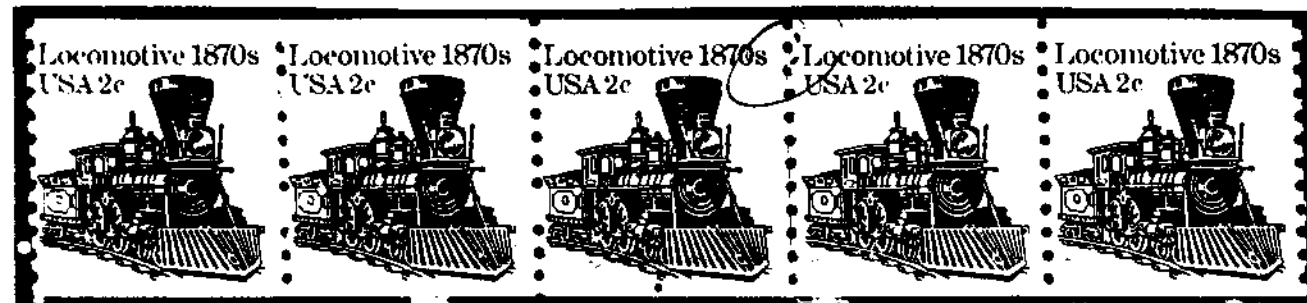
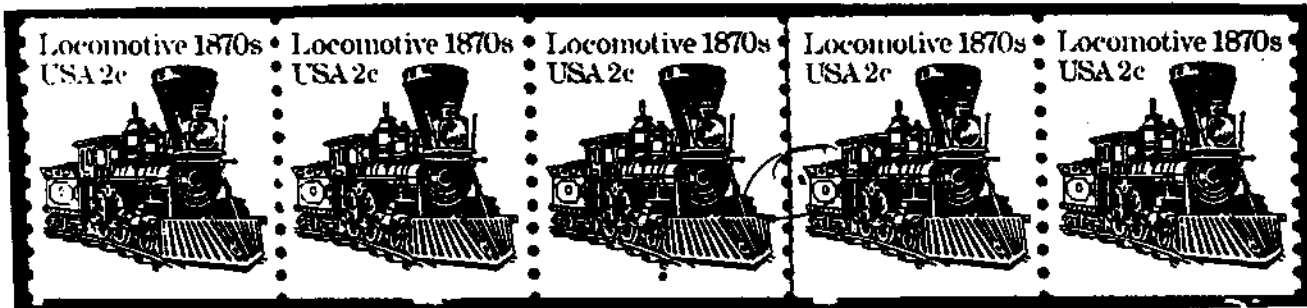
Plate No. 2, B Press. Smearred plate number. Horizontal wedge-shaped faint gougelike mark just left of the plate number.

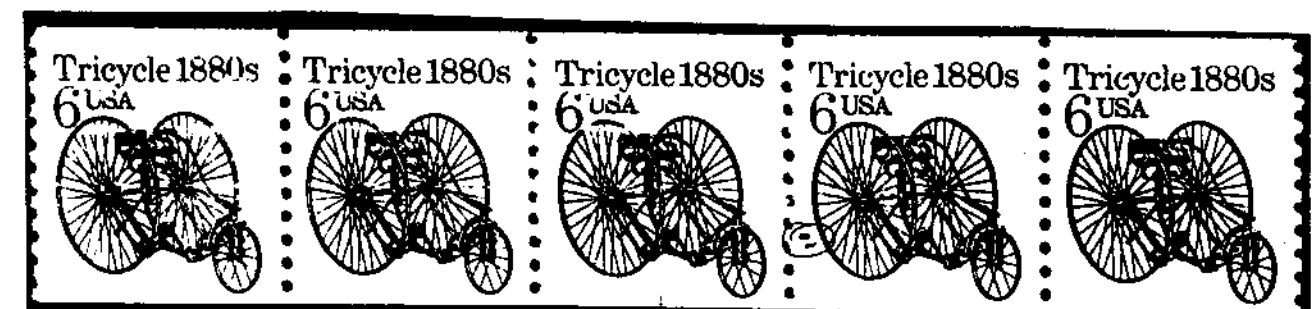
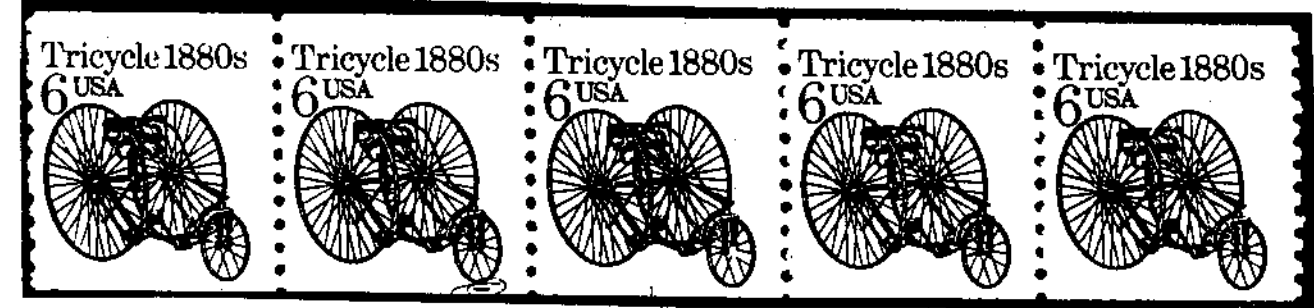
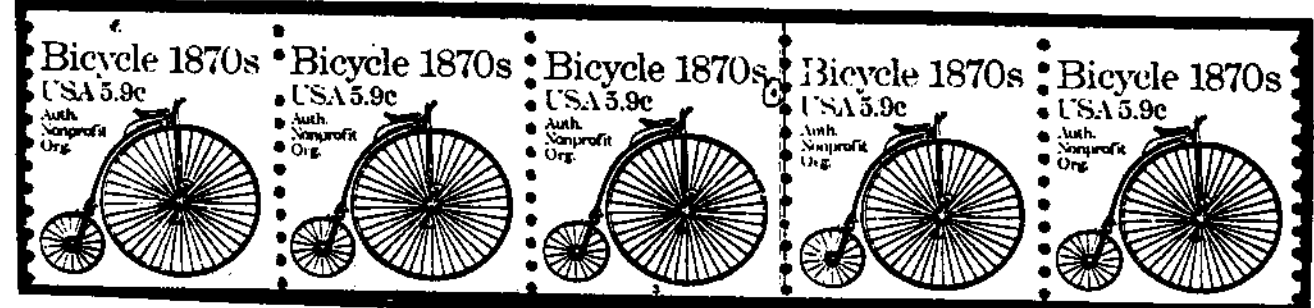
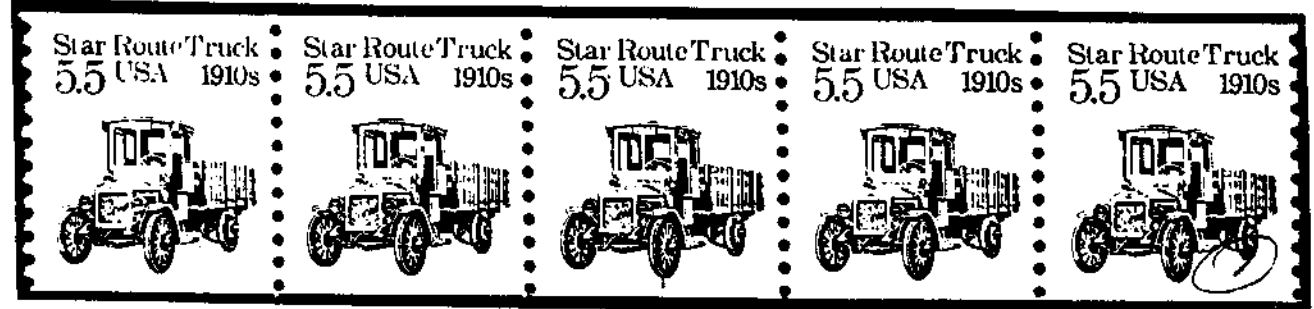
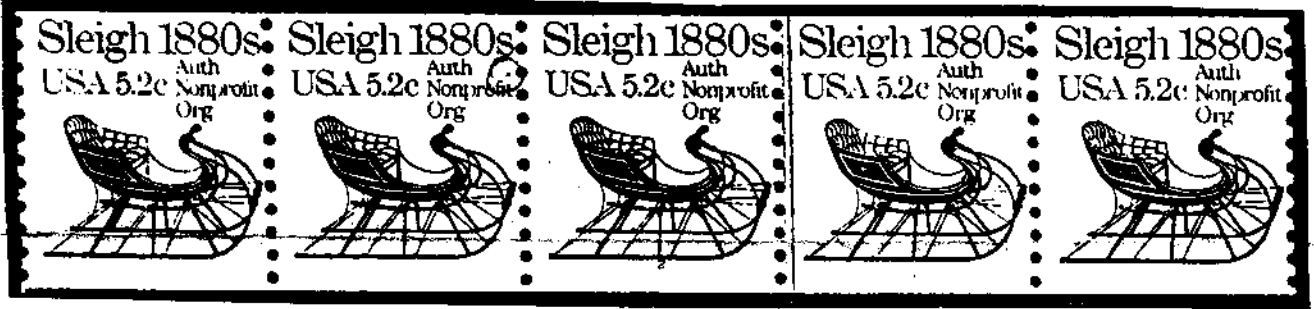
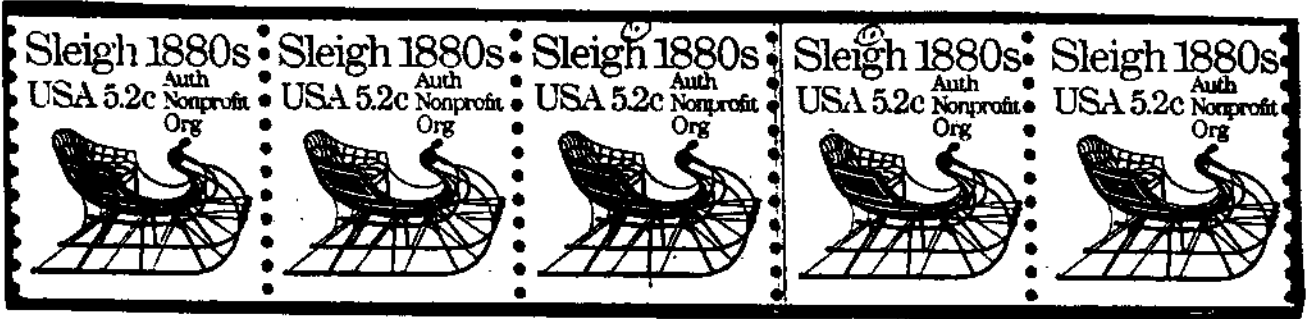
Plate No. 1, tagged and P/C. Low and shifted plate number in the top row of the printing plate.

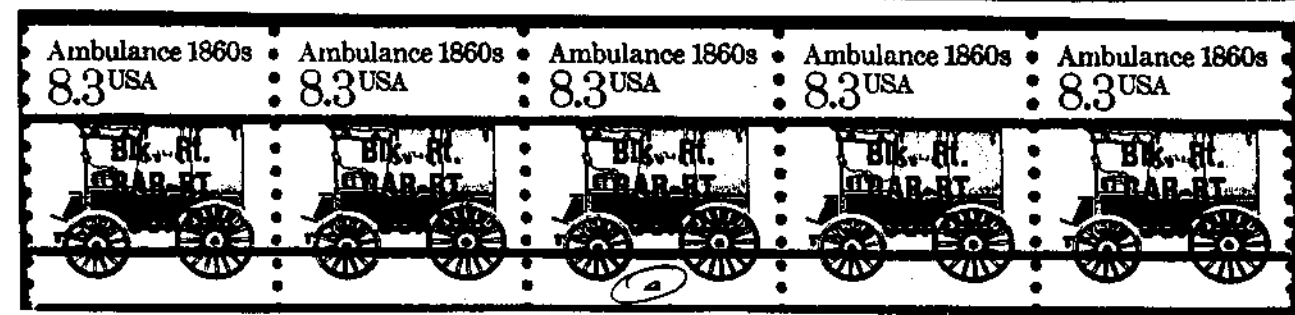
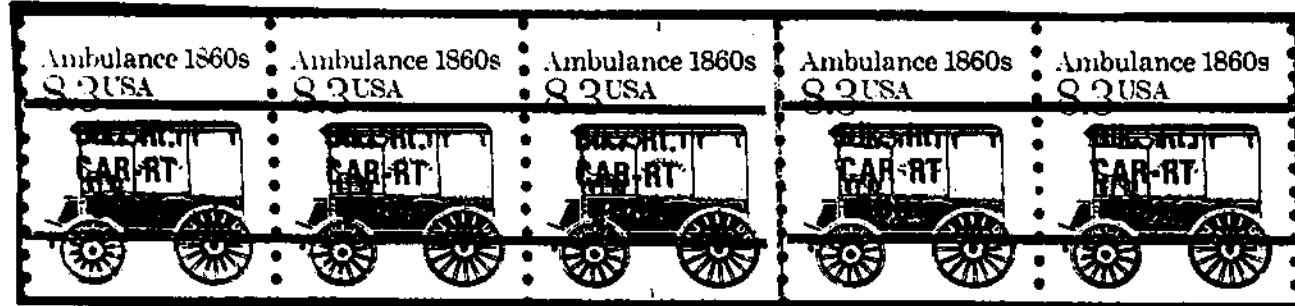
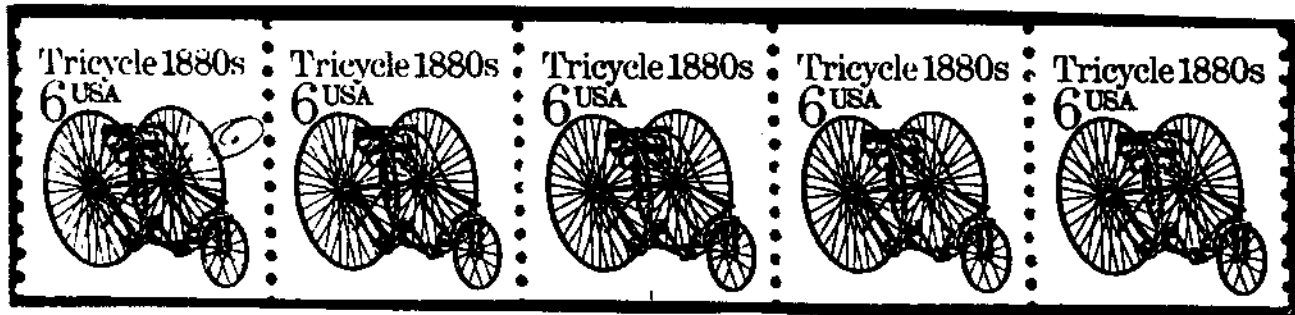
Plate No. 1, tagged and P/C. Double plate number. Two full plate numbers on the stamps from the second row are possible.

* Several examples of varieties known only on the P/C version are illustrated on the tagged version. This is an expedient for the purpose of clarity.









SAM HOUSTON PHILATELICS

August 18, 1990 auction

PLATE NUMBER COILS

315 ** 1891 18c Flag Plate stp/3 Pl no. 2, VF-XF NH	24	323 ** 1906a 17c Precancel Plate stp/5 Pl no. 7 Ty C, XF NH . . .Est(\$25)	20	329 ** O139 "D" Official Plate stp/5 Pl no. 1, F-VF NH . . .Est(\$60) . . .	55
316 ** 1891 18c Flag Plate stp/5 Pl no. 7, XF NH . . .Est(\$25)	24	324 ** 1907 18c Surrey Plate stp/5 Pl no. 7, F-VF NH . . .Est(\$40)	28	330 ** PNC varieties, incl's over 120 stps/3 or 5 w/low numbers, many cut & split. Incl 1c, 2c, 11c bearcat, 12c, 14c & 17c auto. Also incl's several misperf 1520's & a few black testing coils. Could be gum or paper types here . . .Est(\$100)	80
317 ** 1895 20c Flag Plate stp/5 Pl no. 1, VF-XF NH . . .Est(\$70) PH	55	325 ** 1908 20c Pumper Plate stp/3 Pl no. 1, F-VF NH . . .Est(\$40)	32	331 - Souvenir Card no. 6 issued by BEP for ASDA National Show 1969, signed by the plate printer (T.E. Fenney) 11-21-69 light tng but overall nice condition . . .Est(\$30)	32
318 ** 1903 9.3c Mail Wagon Line Pairs Pl no. 1-4, F-VF NH . . .Est(\$40)	30	326 ** 1908 20c Pumper Line Pair Pl no. 11, XF NH . . .Est(\$25)	16		
319 ** 1903 9.3c Mail Wagon Plate stp/5 Pl no.s 1 & 2, XF NH . . .Est(\$30)	22	327 ** 2131var 11c Bearcat Plate stp/5 Pl no. 3 w/heavy "AR", chill roller, VF NH . . .Est(\$20)	18		
320 ** 1903a 9.3c Precancel Plate stp/4 Pl no. 4, XF NH . . .Est(\$30)	38	328 Cv O135 20c Official Plate stp/4 Pl no. 1 on FDC, USPS corner card, typed address . . .Est(\$30)	26		
321 ** 1904 10.9c Hansom Cab Plate stp/5 Pl no.s 1 & 2, VF-XF NH . . .Est(\$60)	46				
322 ** 1906a 17c Precancel Plate stp/5 Pl no. 3 Ty B, XF NH . . .Est(\$40)	24				

Used PNCs Part 2: Grading System



Michael B. Lipson
Box 2543
Reston, VA 22091



In **Used PNCs Part 1: Condition of the June 1990 issue of Coil Line**, I describe various used stamp and used PNC condition characteristics, select characteristics that I feel are important, and finally suggest ratings for each of these characteristics with the objective of combining the ratings into a grading system.

Many readers responded to my article with helpful comments. Some suggested that grading should be more subjective than I proposed observing that the eye does a pretty good job of grading. Others observed that I may have over quantified the solution?

I agree that overall grading is a subjective matter and I am surely guilty of trying to over quantify the process. I feel however that a standard, along with the dialog that goes with it, helps the hobby. The standard builds confidence in the business part of the hobby and provides the means through which collectors can describe their wants. The standard is also another means available to settle disputes (e.g., A collector pays for VF but gets Fine or pays for Fine and wants VF)

Others who accepted the value of a grading system were overwhelmed by my proposal for 5 grades. Many readers observed that 3 grades would suffice. I agree that 3 grades handles all but a few situations but opt for 5 just to provide the flexibility if and when it is needed (e.g., one of a kind covers, varieties). The grading system with 5 grades has 2 other advantages. First, it offers the new collector a speed course on condition, and second, it parallels the PNC3 grading system. Which brings me to the names: 1) average, 2) Fine, 3) F-VF, 4) VF, and 5) XF. Of course I must add 6) superb for the perfectionist.

These questions relate to a fundamental issue of what is the minimum condition used PNC that is collectible? The answer is personal and therefore likely to be emotional. I am quite happy with used PNCs of grade 3. Used PNCs of grade 2 are ok as long as the perf indentations are not too severe. Ken Lawrence says in LINN's Plate Number Coil Handbook, that a PNC with a straight edge is collectible. I go a step further and say that grade 1 is collectible when price or availability becomes a factor.

The grading system that I propose for used PNCs is readily extended into other PNC specialty areas. It directly applies to the used PNC on top variety and I recommend that it apply to the PNC stamp of a PNC strip (others will surely argue for a more strict interpretation that applies the grading system to each stamp of the strip). It applies to PNCs on cover with the addition of a rating system for the envelope (e.g., neatness, trimming, tears, stains, extraneous marks, repair). I invite the cover enthusiasts to make specific recommendations.

Precancels are normally machine cut which often produces short perfs on one side of the stamp. I modify the ratings (grade 2, 3, and 4) for perforation condition. Figure 1 illustrates these ratings as follows:

2. The perfs are discernible but some may have severe indentations or be short. *If machine cut, the perfs may be barely discernible on one side.*

3. All perfs are complete but some may have slight indentations or be short. *If machine cut, the perfs may be noticeably shorter on one side.*

4. All perfs are complete with no indentations but some may be short. *If machine cut, the perfs are not noticeably shorter on one side.*

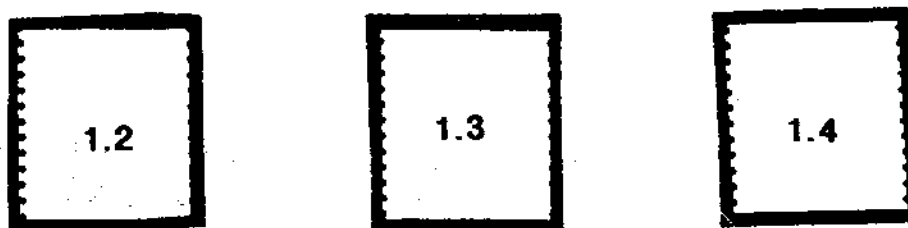


Figure 1 - Ratings for Precancel Perforation Condition

PNCs with fancy cancels or circular date stamp (cDs) have special requirements (e.g., main features are legible, object is nearly complete). Here again, I invite the cDs and fancy cancel enthusiasts to make specific recommendations for a grading system.

Next time I will discuss the factors that influence used PNC prices.

PNC3 AUCTION #4 - CLOSING DATE OCTOBER 21, 1990

LOT	SCOTT DESCRIPTION	MIN BID	LOT	SCOTT DESCRIPTION	MIN BID
A. Line Pairs or B press # Pairs					
1	1891 18c Flag, #3, VF	200.00	55	1901 5.9c Bike, #3, XF	10.00
2	1900 5.2c Sleigh, #2, FVF	5.50	56	1901 SAME	10.00
3	1900a 5.2c Sleigh PC, #2, AVE	6.00	57	1901 5.9c Bike, #4, AVE.	7.00
4	1901 5.9c Bike, #3, VF line, FVF des.	3.50	58	1901 5.9c Bike, #4, FVF	8.00
5	1901 5.9c Bike, #3, FVF	3.50	59	1901 5.9c Bike, #4, VF	7.50
6	1901 5.9c Bike, #4, FVF	3.50	60	1901 5.9c Bike, #4, S line, XF des.	15.00
7	1901 5.9c Bike, #4, VF	2.00	61	1901 5.9c Bike, (2), #3 & #4, VF	12.00
8	1903 9.3c Mail, #2, F	4.50	62	1901 5.9c Bike, (2), #3 XF & #4 VF	20.00
9	1903 9.3c Mail, #3, FVF	18.00	63	1902 7.4c Buggy, #2, VF	6.00
10	1903a 9.3c Mail PC, #4, XF	10.00	64	1903 9.3c Mail W., #1, VF line, XF des.	7.00
11	1904 10.9c Cab, #2, F	4.00	65	1903 9.3c Mail W., #2, AVE.	6.00
12	1904 10.9c Cab, #2, FVF	8.00	66	1903 9.3c Mail W., #4, XF line, high but clear des.	12.00
13	1904a 10.9c Cab PC, #2, LG, XF	12.00	67	1903 9.3c Mail W., #4, XF	11.00
14	1904a 10.9c Cab PC, #3, LG, VF line, XF des.	40.00	68	1903 9.3c Mail W., #5, FVF	90.00
15	1904a 10.9c Cab PC, #3, LG, XF	42.00	69	1903a 9.3c Mail W. PC, #3, XF	17.00
16	1904a 10.9c Cab PC, #4, FVF	15.00	70	1903a 9.3c Mail W. PC, #4, F	19.00
17	1904a 10.9c Cab PC, #4, LG, VF	40.00	71	1903a 9.3c Mail W. PC, #4, VF	15.00
18	1904a SAME	40.00	72	1903a 9.3c Mail W. PC, #6, FVF	2.50
19	1906 17c Auto, #2, XF	2.00	73	1903a 9.3c Mail W. PC, (2), #1 & #3, FVF	20.00
20	1907 18c Surrey, #1, F	40.00	74	1904 10.9c Cab, #1, FVF	5.00
21	1907 18c Surrey, #1, F line, FVF des.	20.00	75	1904 10.9c Cab, #1, FVF	10.00
22	1907 18c Surrey, (3), #1, FVF, VF, XF	23.00	76	1904 10.9c Cab, #1, VF	8.00
23	1907 18c Surrey, (2), #13 and #14, FVF	4.00	77	1904a 10.9c Cab PC, #1, LG, AVE	4.00
24	1908 20c Pumper, #1, FVF	7.50	78	1904a 10.9c Cab PC, #1, LG, XF	15.00
25	1908 20c Pumper, #2, F line, FVF des.	25.00	79	1904a 10.9c Cab PC, #2, AVE	7.00
26	1908 20c Pumper, #7, XF line, VF des.	20.00	80	1904a 10.9c Cab PC, #2, LG, S	15.00
27	1908 20c Pumper, #7, VF	30.00	81	1904a 10.9c Cab PC, #2, LG, S	20.00
28	1908 20c Pumper, #8, XF	25.00	82	1904a 10.9c Cab PC, (2), #3 & #4, LG, XF	550.00
29	1908 20c Pumper, #8, XF	28.00	83	1906 17c Auto, #6, VF	12.00
30	1908 20c Pumper, #14, XF	8.00	84	1906a 17c Auto PC, TY A, #3, VF	4.00
31	1908 20c Pumper, (2), #12 and #14, VF	10.00	85	1906a 17c Auto PC, (2), TY C, #1 & #2, LG, FVF	9.00
32	0135 20c Official, #1, # on rt. stamp, VF	10.00	86	1907 18c Surrey, #3, S line, XF des.	40.00
B. Plate Number Strips of 3					
33	1891 18c Flag, #1, VF	100.00	87	1907 18c Surrey, #6, XF	3.50
34	1891 18c Flag, #1, XF hor. & VF vert. cent.	125.00	88	1907 18c Surrey, #7, VF	20.00
35	1891 18c Flag, #3, VF	215.00	89	1907 18c Surrey, #18, FVF	4.75
36	1891 18c Flag, #3, VF	330.00	90	1908 20c Pumper, #1, thumbnail like indent on one stamp, F	25.00
37	1891 18c Flag, (2), #2 & #4, VF	17.50	91	1908 20c Pumper, #1, three slightly short perms, VF	28.00
38	1891 18c Flag, (2), #2 & #4, XF	20.00	92	1908 20c Pumper, #1, XF	35.00
39	1895 20c Flag, #1, XF	5.00	93	1908 20c Pumper, #2, XF	230.00
40	1895 20c Flag, #2, FVF	4.00	94	1908 20c Pumper, #5, XF line, VF des.	2.00
41	1895 20c Flag, #2, FVF	5.00	95	1908 20c Pumper, #7, crease lower lf. corner of lf. stamp, VF	45.00
42	1895 20c Flag, #2, VF	6.00	96	1908 20c Pumper, #9, FVF	2.00
43	1895 20c Flag, #4, VF	35.00	97	1908 20c Pumper, #13, VF	4.00
44	1895 20c Flag, #6, VF	30.00	98	1908 20c Pumper, (2), #7 AVE & #8 FVF	95.00
45	1895 20c Flag, #8, XF	4.00	99	2005 20c Consumer, #1, XF	35.00
46	1895 20c Flag, #9, S	3.00	100	2005 20c Consumer, #2, VF line, XF des.	32.00
47	1895 20c Flag, (13), #1 to #14, all VF to XF	115.00	101	2005 20c Consumer, #3, XF line, VF des.	20.00
48	1895a 20c Flag PC, #14, FVF	11.00	102	2005 20c Consumer, #3, sm. brown dot near plate # stamp, XF line, VF des.	22.00
49	1900 5.2c Sleigh, #2, XF	8.00	103	2005 20c Consumer, #4, VF	25.00
50	1900 5.2c Sleigh, #3, VF	55.00	104	2005 20c Consumer, #4, XF	35.00
51	1900 5.2c Sleigh, #5, XF	60.00			
52	1900 5.2c Sleigh, (2), #1 & #2, XF	17.00			
53	1901 5.9c Bike, #3, FVF	6.00			
54	1901 5.9c Bike, #3, XF	9.00			

LOT	SCOTT	DESCRIPTION	MIN	BID	LOT	SCOTT	DESCRIPTION	MIN	BID
105	2005	20c Consumer, (4), #1 thru #4, XF lines VF to XF des.	145.00		155	1902	7.4c Buggy, #2, FVP	7.00	
106	2112	22c 'D', (2), #1 FVP & #2 VF	4.00		156	1903	9.3c Mail W., #1, FVP	10.00	
107	2115	22c Flag, #1, FVP	4.00		157	1903	9.3c Mail W., #2, FVP	10.00	
108	2115	22c Flag, #1, VF	4.00		158	1903	9.3c Mail W., #3, VF	22.00	
109	2115	22c Flag, #1, VF	9.00		159	1903	9.3c Mail W., #4, F line, FVP des.	22.00	
110	2115	22c Flag, #3, FVP	7.00		160	1903	9.3c Mail W., #5, FVP	145.00	
111	2115	22c Flag, #10, FVP	5.00		161	1903a	9.3c Mail W. PC, #4, LG, FVP	22.00	
112	2115	22c Flag, (5), #2, all VF to XF	6.00		162	1903a	9.3c Mail W. PC, #6, FVP	3.00	
113	2115	22c Flag, (8), #2, 4, 5, 10, 12, 15, 17, & 22, all from FVP to VF	24.00		163	1904	10.9c Cab, #1, small paper inclusion at 'n' of 4th stamp, VF line, XF des.	15.00	
114	2115b	22c Flag Test, #11, VF	5.00		164	1904	10.9c Cab, #2, F line, AVE. des.	23.00	
115	2134	14c Iceboat, #2, TY II, XF line, FVP des.	3.00		165	1904	10.9c Cab, #2, FVP	25.00	
116	2150	21.1c Letters, #111111, VF	2.50		166	1904a	10.9c Cab PC, #4, F	150.00	
117	0135	20c Official, #1, VF	15.00		167	1905	11c Caboose, #1, TY II paper, S	10.00	
118	----	8 different strips, all VF	10.00		168	1905	SAME	10.00	
		<u>C. Plate Number Strips of 4</u>			169	1906	17c Auto, (2), #3 & #4, TY II paper, XF	19.00	
119	1891	18c Flag, #1, VF,	115.00		170	1906	17c Auto, (2), #5 FVP & #6 AVE	10.00	
120	1901	5.9c Bike, #3, FVP	4.50		171	1906	17c Auto, (3), #2 & #3 VF, #4 FVP	6.00	
121	1901	5.9c Bike, #4, FVP	8.50		172	1906a	17c Auto PC, (2), #1 & #2, TY C, both LG, FVP	8.00	
122	1901	5.9c Bike, #4, VF	5.50		173	1906a	17c Auto PC, (2), #5 & #6, TY A, GIL, XF	13.00	
123	1903	9.3c Mail W., (2), #1 & #2, VF	18.00		174	1906a	SAME	13.00	
124	1904	10.9c Cab, (2), #1 & #2, VF	27.50		175	1906a	17c Auto PC, (2), #5 XF & #6 S, TY A, GIL	14.00	
125	1906	17c Auto, #1, VF	2.00		176	1906a	17c Auto PC, (2), #5 VF & #6 XF, natural paper inclusion on # stamp, TY A, GIL	11.00	
126	1906	17c Auto, #2, XF line, VF des.	2.50		177	1907	18c Surrey, #1, FVP line just touches perfs	42.50	
127	1906	17c Auto, #4, XF line, VF des.	2.50		178	1907	18c Surrey, #4, S line, XF des.	35.00	
128	1907	18c Surrey, #7, VF	36.00		179	1907	18c Surrey, #5, FVP	2.50	
129	1908	20c Pumper, #2, S line & lf. stamps, rt. stamps XF	175.00		180	1907	18c Surrey, #6, FVP	2.50	
130	1908	SAME	175.00		181	1907	18c Surrey, (2), #5 & #6, VF	6.50	
131	1908	20c Pumper, #7, VF	35.00		182	1908	20c Pumper, #11, AVE	30.00	
		<u>D. Plate Number Strips of 5</u>			183	1908	20c Pumper, #12, FVP	3.00	
132	1895	20c Flag, #2, VF	7.50		184	1908	20c Pumper, #14, F	5.50	
133	1895	20c Flag, #11, S	9.00		185	1908	20c Pumper, #14, FVP	3.00	
134	1895	20c Flag, (2), #8 & #11, VF	22.00		186	1908	20c Pumper, (2), #9 & #10, VF	5.00	
135	1895	20c Flag, (2), #8 & #11, XF	26.00		187	2005	20c Consumer, #1, creased IR perf row, VF	55.00	
136	1895	20c Flag, (3), #9 & #14 XF, #12 VF	10.00		188	2115	22c Flag, #1, VF	7.00	
137	1897	1c Omni, (2), #5 & #6, VF	1.00		189	2115	22c Flag, #1, VF	20.00	
138	1897A	2c Loco., (2), #8 & #10, XF	1.25		190	2115	22c Flag, #3, XF	40.00	
139	1898	3c Handcar, (10), 5 each of #1 & #2, (7 XF and 3 VF)	4.00		191	2115	22c Flag, #7, VF	7.00	
140	1899	5c Cycle, #2, XF line, VF des.	1.00		192	2115	22c Flag, #18, XF	8.00	
141	1899	5c Cycle, #4, VF line, XF des.	1.00		193	2115	22c Flag, #20, XF	8.00	
142	1899	5c Cycle, (2), #3 & #4, XF	2.00		194	2115	22c Flag, (7), one #12 VF, three each of #19 & #22 all VF to XF	21.00	
143	1900	5.2c Sleigh, #3, FVP line, VF des.	75.00		195	2123	3.4c Bus, (2), #1 & #2, FVP	---	
144	1900	5.2c Sleigh, #3, XF	110.00		196	2123	3.4c Bus, (2), #1 VF & #2 FVP	1.50	
145	1900	5.2c Sleigh, #5, VF	60.00		197	2133a	12.5c Pushcart PC, (5), #1, four XF and one S	8.75	
146	1900	5.2c Sleigh, #5, XF	100.00		198	2134	14c Iceboat, (4), #1 split # XF line, #2 / whole # on bottom clears and / partial # on top VF line, #3 & #4 XF	7.00	
147	1900a	5.2c Sleigh PC, #5, VF	7.00		199	2135	17c Sled, #2, FVP	2.50	
148	1900a	5.2c Sleigh PC, #5, XF	7.00		200	2136	25c Bread, #1, S	2.50	
149	1901	5.9c Bike, #3, AVE	9.50						
150	1901	5.9c Bike, #3, FVP	10.00						
151	1901	5.9c Bike, #4, XF	12.00						
152	1901a	5.9c Bike PC, #5, LG, S	50.00						
153	1901a	5.9c Bike PC, #6, LG, XF	40.00						
154	1901a	5.9c Bike PC, #6, LG, VF	45.00						

LOT	SCOTT DESCRIPTION	MIN BID	LOT	SCOTT DESCRIPTION	MIN BID
201	2136 25c Bread, #4, XF	2.75	243	1908 20c Pumper, (2), PS7, #9 & #10, S	8.00
202	2136 25c Bread, #5, VF	2.50	244	1908 20c Pumper, (2), PS6, #12 XF & #14 VF line & XF des.	12.00
203	2136 25c Bread, (3), #4, two VF & one XF	8.50	245	2124a 4.9c Buck PC, (2), PS7, #1 FVP GIR, #2 VF GIR	---
204	2150 21.1c Letters, #111111, FVP	2.00	246	2130 10.1c Oil W. PC Ins., (5), PS6, #2, VF	8.50
205	2150 SAME	2.00	247	2261 16.7c Popcorn PC, (3), PS6, #1, one FVP & two VF	8.50
206	2226 24.1 Tandem B. PC, (3), #1, two VF one XF	9.00	248	2280 25c Flag, roll of 100 with design low but easily clear of bottom, no trace of #, 60% of bottom of Mtn. is green, FVP	25.00
207	2279 25c 'E', (5), #1222, VF to XF	9.50	249	2281 25c Bee, PS7, #1 just touches des, XF	6.00
208	2280 25c Flag, #7, block, VF	3.00	250	2281 25c Bee, PS18, #1 short full serif, SL 12L, XF	25.00
209	2280 25c Flag, #9, phos., VF	3.00	251	2281 25c Bee, PS17, #1 short full serif, SL 11R, XF	35.00
210	2280 25c Flag, #11, phos., XF	3.00	252	2281 25c Bee, PS15, #1 short full serif, SL 9R, FVP	25.00
211	2280 25c Flag, #13, phos., VF	3.00	253	2281 25c Bee, (2), PS15, #1, SL 10R, FVP; PS17, #1, SL 11R, XF	15.00
212	2280 25c Flag, #13, phos., VF	4.00	254	2281 25c Bee, (3), PS13, #1, SL 9L, FVP; PS17, #1, SL 11L, VF; PS15, #2, SL 9L, round tag, FVP	22.00
213	2280 25c Flag, (3), #1 thru #3, all phos., VF	8.00	255	2281 25c Bee, PS8, #2 50% into design, SL 0 with three lines showing four colors, square tag, FVP	5.00
214	2280 25c Flag, (3), #7 XF, #8 S, #10 VF, all phos.	10.00	256	2281 25c Bee, PS9, #2, SL 1R, round tag, # clears frame, S	18.00
215	2281 25c Bee, (2), #1 & #2, XF	5.00	257	2281 25c Bee, (3), no # strips with seamlines, strips of 2, 4, & 6 stamps, FVP to VF	3.50
216	2281 25c Bee, #1, tall full serif, XF	18.00	258	2468 #1.00 Seaplane, PS7, #1, S	12.00
217	2281 SAME	18.00	VARIETIES		
218	2281 25c Bee, #1, tall full serif, S	25.00	A. Imperis		
219	2281 25c Bee, (5), #1, tall full serif, VF	65.00	259	1891 18c Flag, PS2, #2, cut high but des. clear	100.00
E. Longer Strips			260	1895 20c Flag, pair, XF	5.00
220	1895 20c Flag, PS7, #1, XF	70.00	261	1897A 2c Loco., pair, cut high but design clears	40.00
221	1898 3c Handcar, (2), PS6, #1 & #2, XF line, VF des.	1.50	262	2115 22c Flag, pair, FVP	6.00
222	1898A 4c Stage, (2), PS7, #3 & #4, FVP	2.00	263	2136 25c Bread, PSS, #4, also miscut with 25% of wheels on top & whole # on top	250.00
223	1899 5c Cycle, (4), PS6, #1 FVP; #2 thru #4, VF	2.25	264	2136 25c Bread, pair, mild miscut with some lettering on bottom, otherwise VF	7.00
224	1900a 5.2c Sleigh PC, PS11, #3, wavy PC lines, G5L, VF	6.00	265	2280 25c Flag, pair, block tag, cut high but design clears, FVP	18.00
225	1900a 5.2c Sleigh PC, PS11, #5, wavy PC lines, G5L, VF	6.00	266	2280 25c Flag, pair, block tag, cut high but design clears, FVP	20.00
226	1903 9.3c Mail W., PS7, #5, FVP	175.00	267	2280 25c Flag, pair, phos. tag, VF	10.00
227	1903a 9.3c Mail W. PC, PS6, #4, LG, FVP	12.00	268	2280 25c Flag, PS3, #6, thin top lf. stamp 1/4" x 1/2" with some yellowing on design side of thin, otherwise XF	225.00
228	1903a 9.3c Mail W. PC, open roll of 500, #5 & #6 G5R, # clear bottom. F to FVP as perfs wander	60.00	269	2280 25c Flag, pair, phos., VF	12.50
229	1904a 10.9c Cab PC, PS6, #1, LG, VF	17.00	270	2281 25c Bee, pair, design barely clears bottom,	12.50
230	1904a 10.9c Cab PC, PS6, #2, LG, XF line, VF des.	18.00	271	2281 25c Bee, strip of 3, VF vert. cent.	35.00
231	1904a 10.9c Cab PC, PS8, #3, LG, S line, FVP des.	195.00	272	2281 25c Bee, seam line strip of 4, XF	175.00
232	1904a 10.9c Cab PC, PS10, #3, G4L, FVP line, VF des.	195.00	273	2115 22c Flag, strip of 5, VF vert. cent.	20.00
233	1904a 10.9c Cab PC, PS10, #4, G4L, FVP line, VF des.	195.00			
234	1906a 17c Auto PC, PS9, #4, BA strip, G4L, row 11, FVP	12.00			
235	1906a 17c Auto PC, (2), PS6, #3 XF & #4 VF, TY C, LG	10.00			
236	1906a 17c Auto PC, (2), PS11, #3 VF & #4 FVP, TY BA, G4R	25.00			
237	1906a 17c Auto PC, (2), PS11, #5 & #7, TY AB, G5R, XF	15.00			
238	1906a SAME	15.00			
239	1906a SAME	15.00			
240	1906a SAME	15.00			
241	1906a SAME	15.00			
242	1908 20c Pumper, PS7, #11, S line, FVP des.	30.00			

LOT	SCOTT DESCRIPTION	MIN	MAX	LOT	SCOTT DESCRIPTION	MIN	MAX
<u>B. Misprints</u>				304	1903 9.3 Mail W., PS3, #1, 'Weeping W' at 1L perfs creased at 1L, FVF		20.00
274	1895 20c Flag, strip of 5, through middle of des	10.00		305	1903 9.3c Mail W., PSS, #1, 'Weeping W' at 1L FVF		8.00
275	1895 20c Flag, PS3, #5, perf 8mm lf., horz. cent. XF	35.00		306	1903 9.3c Mail W., PS6, #2, Tail on 'U' of 'USA' at 1R, XF line, S des.		20.00
276	1908 20c Pumper, PS6, #16, through 'r' of Pump.	3.00		307	1903 9.3c Mail W., PS3, #3, 'Smoking g' at 1L, FVF		35.00
<u>C. Miscuts</u>				308	1903a 9.3c Mail W. PC, PSS, #1, 'Weeping W' at 1L, FVF		8.00
277	1898 3c Handcar, PS7, no #, des. touches bottom, VF	8.00		309	1903a 9.3c Mail W. PC, PSS, #1 'Weeping W' at 1L, VF		15.00
278	1901a 5.9c Bike PC, PS7, #5, LG, third PC line showing on five stamps, FVF	40.00		310	1903a 9.3c Mail W. PC, PSS, #1, 'Weeping W' at 1L, G2L, FVF		15.00
279	1901a 5.9c Bike PC, PS7, #6, LG, third PC line showing on five stamps, FVF	40.00		311	1903a 9.3c Mail W. PC, PSS, #1 'Weeping W' at 1L, G2L, VF		17.00
280	1906 17c Auto, PS6, #3, whole # on top just touches, XF line	6.00		312	1903a 9.3c Mail W. PC, PSS, #1 'Weeping W' at 1L, G2L, XF		23.00
281	1906 17c Auto, PS5, #4, whole # on top clears some wheels on top, XF line	6.00		313	1903a 9.3c Mail W. PC, PS8, #2, G3L, Tail on 'U' of 'USA', XF		25.00
282	1906 17c Auto, (2), PSS, #1 & #2 on top clear by 1mm+, some wheels on top, AVE	12.00		314	1903a 9.3c Mail W. PC, PS6, #3, LG, 'Smoking g' at 1L, several black dots from PC bar inking, VF		40.00
283	1906 17c Auto, (2), PSS, #3 & #4 on top just touch, TY I paper, milky blue paper v. AVE	14.00		315	1904 10.9c Cab, PSS, #2, dropped transfer at 2L, FVF		15.00
284	2005 20c Consumer, PS4, #2 split, XF line	30.00		316	1904a 10.9c Cab PC, PSS, #2, LG, with chill roller at 3L, FVF		20.00
285	2128 8.3c Ambul., (2), PS8, #1 matched set/ top strip low #1 cut and bottom strip showing remainder as well as whole #1 on bottom, XF	20.00		317	1904a 10.9c Cab PC, PSS, #2, dropped transfer at 2L, FVF		25.00
286	2128a 8.3c Ambul. PC, PS8, no # due to low entry LG, VF	15.00		318	1906 17c Auto, PSS, #1, bar tag gap 3L, F		3.00
287	2128a 8.3c Ambul. PC, PS7, no # due to low entry G2L, FVF	15.00		319	1906 17c Auto, (2), PSS, #3 & #4 XF, TY II paper vert. tag gap 3L, clip at bottom		20.00
288	2128a 8.3c Ambul. PC, PS8, #1 whole # on top & bottom, both clear of edges, S	75.00		320	1906 17c Auto, (2), PSS, #3 XF & #4 S, TY II paper, vert. tag gap 3L, clip at bottom		21.00
289	2128a 8.3c Ambul. PC, (2), PS7, #1, twin strips from matched rolls, one strip 99% no #, other strip 99% double #, G2L, FVF	35.00		321	1906 17c Auto, PS6, #7, 'Oil Drop' at 1R XF line, FVF des.		8.00
290	2132 12c Steamer, PSS, no #, des. not cut, FVF	4.50		322	1907 18c Surrey, PSS, #1, 'Lighting Bolt', light, but easily visible j. line, XF		70.00
291	2132 SAME	4.50		323	1908 20c Pumper, PS3, #1, 'Smoking P' @ 1L, VF		40.00
292	2132 SAME	4.50		324	1908 20c Pumper, PSS, #5 'Smoking Engine', FVF		40.00
293	2134 14c Iceboat, (2), PSS, #3 & #4, plate # 90% on top, FVF	10.00		325	1908 20c Pumper, PS3, #15, 'Wounded P', XF		6.00
<u>D. Constant Plate and Mat Varieties</u>				326	1908 20c Pumper, PS7, #15, 'Wounded P', VF		8.00
294	1897 1c Omni, PS8, #4, plate chip on line, XF	2.00		327	1908 20c Pumper, PSS, #15 'Wounded P', VF		10.00
295	1897A 2c Loco., PS9, #8, bottom screwhead tag gap at 5L, XF	2.00		328	1908 20c Pumper, PSS, #15 'Wounded P', FVF		13.00
296	1897A 2c Loco., PS12, #10, bottom screwhead tag gap at 5L, VF	2.00		329	2123 3.4c Bus, PS7, #2, chill roller, FVF line VF des.		8.00
297	1897A 2c Loco., PS3, #3, Smoking 't', VF	7.00		330	2124 4.9c Buck, PSS, #4, 'Buggy Whip', XF		10.00
298	1898A 4c Stage, (2), PSS, #1 chill roller 3L, S; #2 quotation marks '18' at 1L and chill roller 3L, both S line and XF des.	18.00		331	2124 4.9c Buck, PSS, #4, 'Buggy Whip', VF		15.00
299	1899 5c Cycle, PSS, #3 clip tag gap 1L, VF	5.00		332	2124 4.9c Buck, PSS, #4, 'Buggy Whip', VF		15.00
300	1899 5c Cycle, #4, PSS, #4 clip tag gap 1L, VF	5.00		333	2124a 4.9c Buck PC, PSS, #6, 'Buggy Rein', VF		40.00
301	1899 5c Cycle, (2), PS10, #1 & #2, screwhead tag gap 5R, NEW FIND, not in catalogs, VF and XF	10.00		334	2124a 4.9c Buck PC, PSS, #1, double gap mat v. 1R, row 2, 100% # on top just touches & 10% on bottom, F		10.00
302	1900a 5.2c Sleigh PC, PS10, #2, GSR, 'Flying Hyphen' at 3R, VF	40.00		335	2124a 4.9c Buck PC, PS7, no #, double bar breaks G1R, F		10.00
303	1902 7.4c Buggy, strip of 6, 'Blown Tire', VF	30.00					

LOT	SCOTT DESCRIPTION	MIN BID	LOT	SCOTT DESCRIPTION	MIN BID
336	2124a 4.9c Buck PC, (4), PS8, split #2, complete matched set showing all bar breaks as in Esrati, AVE	20.00			
337	2130 10.1c Oil W., PSS, #1 "Flying Byphen", 1R, XF	8.00			
338	2130a 10.1c Oil W. PC, strip of 5, "Perched Parrot - early state", XF	12.00			
339	2131 11c Stutz, PSS, #3, "Fender Crack", VF	9.00			
340	2131 11c Stutz, PS7, #3, "Flying Byphen" and chill roller at "ar" of Bearcat and plate #, VF	25.00			
341	2132a 12c Steamer PC, PSS, #1, LG, "Flying comma over 'e' of Stanley", S	5.00			
342	2150a 21.1c Letters PC, PSS, #111121, diagonal line across strip, M2PV1, XF	13.00			
343	2226 2c Loco B, PS32, #1, "RR Spike" 2R 2T1RV1, XF horz. & VF vert. cent.	13.00			
344	2226 2c Loco B, (5), strips of 5, "RR Spike" on cent. stamp, 2T1RV1, VF to XF examples, FVF to VF cent.	45.00			
345	2265 21c Mail Car, PS12, #1, "RR Tracks Con't" on bottom 8L, FVF	10.00			
346	2265 21c Mail Car, PS12, #1, "RR Tracks Con't", on bottom 8L, VF	19.00			
347	2281 25c Bee, (3), Matched Set, PSS, #1 full serif just touches frame, each strip shows movement of constant pl. flaw on green plate, (3L, 1L, 2R), XF, set proves optiforma press run fin. by "C" or "D" press	100.00			
<u>E. Other Varieties</u>					
348	1895 20c Flag, single, "Missing Black", VF	35.00			
349	1895 20c Flag, pair, 5mm blue color shift into field of red stripes, VF	15.00			
350	1897 1c Omni, strip of 5, "1" with missing ink, VF	2.50			
351	2115 22c Flag, single, "Erie Blue", XF	10.00			
352	2115 22c Flag, pair, "Erie Blue", VF	15.00			
353	2115 22c Flag, pair, "Erie Blue", VF	21.00			
COVERS (First Day Covers are Unaddressed)					
<u>A. FDC by Fleetwood</u>					
354	1891 18c Flag, PS2, #1 on lf. stamp, XF	42.00			
<u>B. FDC by Artmaster</u>					
355	2005 20c Consumer, PS2, #1, XF	25.00			
356	2005 20c Consumer, PS2, #2, XF	25.00			
357	2253 5c Milk W., PS3, #1, plus pr. of 5c, cancel touches #, VF	3.00			
<u>C. FDC by Aircraft</u>					
358	1900 5.2c Sleigh, PS3, #1, plus one stamp on lf., cancel hides #, XF	5.00			
359	2253 3c Wagon, PSS, #1, plus three more 3c, VF	2.00			
360	2279 25c "E", PS3, #1222, VF	3.00			
361	2279 25c "E", PSS, #1111, FVF	4.00			
	<u>D. Other Covers</u>				
362	1891 18c Flag, #2, Tampa, FL, 9-9-81, XF	11.00			
363	1891 18c Flag, #3, double strike ptak., Ft. Myers, FL, 6-26-81, three sm. light brown stains on cover, XF	30.00			
364	1891 18c Flag, #4, Flushing, NY, 9-8-81, VF	10.00			
365	1895 20c Flag, (3), #1, #2, & #3, ptak. summer of '82, XF	7.50			
366	2115 22c Flag, no #, "Erie Blue", Erie, PA, 10-8-86, XF	4.00			
367	2280 25c Flag, (50), #9 Phos., wholesale lot all utility bill covers to City of Cuyahoga Falls, OH, all FVF to XF	10.00			
368	2279 25c "E", #2222, Dubois, PA, 12-29-89, XF	3.75			
369	2280 25c Flag, #1 on a #9 cover, hand cancel intercourse, PA, 10-4-88, VF	---			
370	2280 25c Flag, #6, 6-9-89, VF	2.50			
371	2280 25c Flag, #6, 4-4-89, VF	2.50			
372	2280 25c Flag, (10), #8 block and phos., FVF to XF	4.00			
373	0135 20c Official, #1 plus add. postage that covers plate #, light cancel, XF	35.00			
374	0135 20c Official, #1 on rt. of strip of 3 plus add. postage, lf. edge torn to edge of design, large cover, AVE	---			
375	0139 Official "D", #1 on rt. of pr. plus add. postage, large cover reduced to #10 size addresses missing, # clears cancel, XF	50.00			
<u>USED</u>					
376	1891 18c Flag, PS3, #2 on piece, hand can. Topeka, KS, 5-11-81 (3 days earlier than EKV on cover), stamps both ends with nibbed perfs	---			
377	1891 18c Flag, #6, med. cancel that clears #6, sound perfs, FVF to VF cent.	250.00			
378	1895 20c Flag, PS4, #4 on 4th stamp, first stamp 2 short perfs at top, two CDS's Potlatch, Idaho, 3-5-83, VF	20.00			
379	1900 5.2c Sleigh, #5, med. can., sound perfs # clear of des., FVF	30.00			
380	1903 9.3c Mail W., #3, lt. can., sound perfs, # clear of des., F	6.00			
381	1903a 9.3c Mail W. PC, #1, pull perf upper lf. F	4.00			
382	1903a 9.3c Mail W. PC, #4, st. edge lf., FVF	3.00			
383	1904a 10.9c Cab PC, #1, 4 short perfs rt., F	2.00			
384	1904a 10.9c Cab PC, #3, XF	15.00			
385	1904a 10.9c Cab PC, #3, sound perfs, FVF	25.00			
386	1904a 10.9c Cab PC, #4, short perfs lower lf. FVF	25.00			
387	1907 18c Surrey, (5), #2, #3, #4, #6, & #16, two short perfs on #4, otherwise clean sound copies	---			
388	2005 20c Consumer, (4), #1 thru #4, all VF	1.00			

LOT	SCOTT DESCRIPTION	MIN BID	LOT	SCOTT DESCRIPTION	MIN BID
LABELS			BOOKS		
389	---- 14 different 1988 labels from 3000 rolls	20.00	399	---- Transportation and Plate No. Coil Issues, by Dr. Joseph Agris. These are collector's editions, leatherett bound and signed by the author. There are several color plates and more than 200 B&W photos, 360 pages in all. The books cover trans. and regular PNCs from inception to the 'E' stamp. Successful bidders will be billed an additional \$3.00 to cover postage and mailer.	18.00
SOUVENIR CARD			400	---- SAME	18.00
390	2468 \$1.00 Seaplane, PS3, #1, First Day of Issue, produced by Beagle Stamps, XF	15.00	401	---- SAME	18.00
SHOWCARD			402	---- SAME	18.00
391	2115b 22c Flag, PSS, #T1, 1987 Mojex PD Cancel and Mojex show cancels, VF	15.00	403	---- SAME	18.00
POSTERETTE			404	---- SAME	18.00
392	0135 20c Official, PS3, #1, FD cancel on 7 1/2" x 8 1/2" Great Seal Posterette, FVF	35.00	405	---- SAME	18.00
DONATIONS			406	---- SAME	18.00
393	1299 1c Jefferson, pair misperfed through name	---	407	---- SAME	18.00
394	1903 9.3c Mail W., PS4, #1, AVE	---	408	---- SAME	18.00
395	1907 18c Surrey, PS3, #10, XF line, VF des.	---	OMMISSION		
396	2115 22c Flag, PS3, #2, XF	---	409	2128 -2128a 8.3c Ambul., (4), Set PS3, #1 & #2 regular and PC, #1 PC LG, VF to XF	4.50
397	2128 8.3c Ambul., PS3, #2, XF line, VF des.	---			
398	---- (3), P# singles, 2115b, 22c Flag, #T1, XF; 2279, 'E', #1111, VF; & 2280, 25c Flag #7 phos., FVF	---			

"BIDDERS - PLEASE READ"

- * Number in () preceding a lot description indicates the number of items in that lot.
- * Note that some lots do not have minimum bids as indicated by ---.
- * For precancel strips, gap positions are noted. If not noted this indicates that there is no gap position.
- * Lots 216 - 219 have very nice full tall serifs that touch but do not enter the frames.
- * Please review the August Coil Line for notes on grading.
- * In the event of tie bids, the earliest bid received will win.

BIDDING INCREMENTS

	<u>BIDDING AREA</u>	<u>RAISE</u>
\$	1.00 - 9.50	.50
	10.00 - 49.00	1.00
	50.00 - 97.50	2.50
	100.00 - 495.00	5.00
	500.00 +	10.00

Irregular bids will be reduced to the next lower level. Each lot will be sold the highest bidder at one increment over the second highest bid unless the minimum bid is not reached. Any bid not in good faith, in the estimation of the Auction Director, may be rejected. The Auction Director reserves the right to remove any lot from the sale.

BIDDERS

1. Please use the bid sheet provided. I will not accept any bids if not on this sheet. You may use photocopies or extra forms are available for .04 each and a SASE, 10 sheets per 1 oz. of postage.
2. Please sign your bid sheets. This constitutes acceptance of these terms of sale. Unsigned bid sheets will not be accepted.
3. MB stands for Minimum Bid. This is a reserve auction and these MBs must be met as they are set by the consignor. Any bids under the MB are rejected.
4. "BUY" bids are accepted. The bidder agrees to pay one increment over the next highest bid.
5. "OR" bids are accepted on lots that are described as "Same".
6. I do accept bidding limits. However, limits under \$25 are respectfully declined.
7. Lots are sold to the highest bidder at one (1) increment over the second highest bid. In case of a tie, the earliest bidder wins.
8. ~~CHECK YOUR BID SHEETS CAREFULLY!~~ Although I will check on drastic bids (e.g. a \$200 bid for a \$20 item), the PNC3 Auctions are not responsible for any incorrectly submitted bids.
9. Upon closing the auctions, you will be notified of your purchases. Please send payment within 5 days.
10. Postage and insurance cost will be added to each invoice.
11. Any lots not found to be described accurately may be returned within (10) days of receipt in the same condition that they were sent.
12. There is NO BUYER'S PREMIUM at this time.

PNC3 AUCTION BID SHEET - CLOSING DATE: OCTOBER 21, 1990

Name _____ PNC3# _____
 Home _____ Home Area _____
 Address _____ Phone () _____
 City _____ State _____ Zip _____

You will be billed for Insured Mail (under \$50) or Certified Mail (over \$50) covered by our APS Insurance, plus normal postage.

Please execute the following bids for me in this mail auction.

All bid sheets must be signed! Signature: _____

Lot #	Bid	Lot #	Bid	Lot #	Bid	Lot #	Bid	Lot #	Bid
-----	-----	-----	-----	-----	-----	-----	-----	-----	-----
-----	-----	-----	-----	-----	-----	-----	-----	-----	-----
-----	-----	-----	-----	-----	-----	-----	-----	-----	-----
-----	-----	-----	-----	-----	-----	-----	-----	-----	-----
-----	-----	-----	-----	-----	-----	-----	-----	-----	-----

CHECK YOUR BIDS CAREFULLY!
 Please limit my purchases to \$ _____ Limits less than \$25, respectfully declined. Bids of bidders with purchase limits will be executed in the order (vertically) in which they list their lots.
 Send completed bid sheets to:
 David Agrodnia, PNC3 Auction, 219 School St., Berlin, NH 03570

USPS master item number list

Item Number	Denomination	Description	Stamp configuration
7000 Series			
7703	\$1.00	Seaplane	Coil of 500
7704	1¢	Omnibus	Coil of 500
7705	1¢	Omnibus	Coil of 3,000
7710	10¢	Redress Petition	Coil of 500
7712	20¢	Penalty Mail	Coil of 100
7725	25¢	Flag over Yosemite	Coil of 500
7726	25¢	Flag over Yosemite	Coil of 3,000
7727	25¢	Flag over Yosemite	Coil of 10,000
7729	2¢	Locomotive	Coil of 500
7730	2¢	Locomotive	Coil of 3,000
7737	25¢	Flag over Yosemite	Coil of 100
7740	10¢	Canal Boat	Coil of 3,000
7741	4¢	Stagecoach	Coil of 500
7742	4¢	Stagecoach	Coil of 3,000
7754	5¢	Circus Wagon (Avail. 9/1/90)	Coil of 500
7755	5¢	Circus Wagon (Avail. 9/1/90)	Coil of 3,000
7760	25¢	Penalty Mail	Coil of 100
7762	3¢	Conestoga Wagon	Coil of 500
7763	3¢	Conestoga Wagon	Coil of 3,000
7766	15¢	Penalty Mail	Coil of 100
7784	3¢	Handcar	Coil of 3,000
7900	25¢	Honeybee	Coil of 3,000
7901A	21¢	Rail Mail Car Precanceled	Coil of 10,000
(Availability, to be announced)			
7902A	10.1¢	Oil Wagon Precanceled	Coil of 10,000
7903A	10.1¢	Oil Wagon Precanceled	Coil of 500
7904A	10.1¢	Oil Wagon Precanceled	Coil of 3,000
7938A	7.1¢	Tractor Precanceled	Coil of 500
7939A	7.1¢	Tractor Precanceled	Coil of 3,000
7951A	5.3¢	Elevator Precanceled	Coil of 500
7952A	5.3¢	Elevator Precanceled	Coil of 3,000
7953A	7.6¢	Carreta Precanceled	Coil of 500
7954A	7.6¢	Carreta Precanceled	Coil of 3,000
7955A	8.4¢	Wheel Chair Precanceled	Coil of 500
7956A	8.4¢	Wheel Chair Precanceled	Coil of 3,000
7957A	13.2¢	Rail Car Precanceled	Coil of 500
7958A	13.2¢	Rail Car Precanceled	Coil of 3,000
7959A	13.2¢	Rail Car Precanceled	Coil of 10,000

Signed, collectors edition, only 60 of 500 remain
"TRANSPORTATION COIL ISSUES"
**** SALE ** NEW BOOK ** SAVINGS \$5 ****

**SPECIAL
SALE**

**LIMITED
EDITION
\$24.95**



**HARD COVER
ONLY**

YES, rush me my signed collectors edition while they last at the special price:
\$24.95 + \$2.05 shipping. Total: \$27.00

Check or Money Order enclosed

Card Number _____ Card Expires Mo. / Yr. _____

Name _____

Address _____

City _____ State _____ ZIP _____

Telephone () _____

Texas residents please add 7.25% Sales Tax

PLATE NUMBER COIL ISSUES VOL. I

ECLECTIC PUBLISHING CO.
 NEW BOOK DEPT. A1
 P.O. BOX 20373
 HOUSTON, TEXAS 77225-0373

6¢ Tricycle

By
Robert M. Washburn

I know that I said this month's article would cover the 25¢ Breadwagon, however, I just realized I already did an article on Breadwagons (November, 1989). I have, therefore, decided to cover the 6¢ Tricycle.

The 6¢ Tricycle was issued May 6, 1985 in Childs, Maryland. Only plate number 1 exists tagged. Numbers 1 and 2 exist precancelled. Plate number 1, both tagged and precancelled, is known on first day cover, although the authenticity of the precancelled number 1 first day cover has been questioned. The plate numbers appear every 52 stamps in a roll.

The earliest known usages of the 6¢ Tricycle on cover are as follows:

<u>Plate Number</u>	<u>Earliest Known Usage On Cover</u>
1 (tagged)	9/14/85
1 (precancelled)	11/5/87
2 (precancelled)	11/22/86

All three of the dated covers listed above were philatelically contrived. I have never heard of any cover using a tagged 6¢ Tricycle #1 which was not philatelic.

As for the precancels, non-philatelic non-profit usages can be found, but it's not that easy to find one with a plate number. Plate number 1 is especially difficult, and I am aware of only four such covers which exist. Plate number 2 covers are much more plentiful, but are seldom seen on dealer pricelists.

I'm still doing research on mass mailers of PNC precancels. If you have any precancelled PNC covers, please let me know the plate number used and the name of the mailer. Thanks.

The new EKU's on cover found this month include the following: 14¢ Iceboat #2.(Cottrell)--8/20/85 and #3--11/13/85, 17¢ Electric Auto #1--9/8/82; 18¢ Surrey #13--8/11/81, 20¢ Pumper #8--2/10/82, 20¢ Consumer Education #2--5/5/82, and 22¢ Flag #10--3/31/86, #13--9/5/86 and #19--5/14/87. Also, another 18¢ Flag #6 cover has been found (11/18/81 purple machine cancel).

Next month's article will cover the 5¢ Motorcycle.



AMERICAN TOPICAL ASSOCIATION
P. O. Box 630
Johnstown, PA USA 15907



SAM HOUSTON PHILATELICS

July 7, 1990 auction

PLATE NUMBER COILS

- 454 Cv 1900 5.2c Sleigh plate sp/4 no. 1 on Artmaster FDC, hand ccl, sp VF-XF, clean unaddr. .EST(\$25-30). 14
- 455 Cv 1900 5.2c Sleigh plate sp/3 no. 1 on Gill Craft FDC, clean, unaddr. .EST(\$35). PH 16
- 456 Cv 1901 5.9c Bicycle Line Pair no. 4 (w/2 extra stamps) on Colorado FDC, clean, unaddr, sp VF. .EST(\$25-30). 16
- 457 Cv 1902 7.4c Buggy plate sp/3 no. 2 on Art Craft FDC, clean, unaddr. .EST(\$25). 14
- 458 Cv 1903 9.3c Mail Wagon plate sp/3 no. 1, on Gill Craft FDC, no. partially hidden, clean, unaddr. .EST(\$35). PH 14
- 459 Cv 1903 9.3c Mail Wagon Line Pair no. 2 (w/extra stamp) XF on Colorado FDC, clean, unaddr. .EST(\$30). PH 18
- 460 Cv 1904 10.9c Hansom Cab Line Pair no. 1 on Colorado FDC, clean, unaddr. .EST(\$30). 18
- 461 Cv 1904 10.9c Hansom Cab Line Pair no. 2 on Artmaster FDC, pair XF, clean unaddr. .EST(\$25-30). 10
- 462 ** 1904 (2) Plate sp/5 Pl no. 2, VF+ NH .EST(\$60). 28
- 463 Cv 1906 17c Auto plate sp/3 no. 2 on Art Craft FDC, F-VF, no. partially hidden, clean, unaddr. .EST(\$25). 10
- 464 ** 1907 18c Surrey Line Pairs Pl no. 3 & 4, VF-XF NH .EST(\$60). 42
- 465 ** 1907 18c Surrey plate sp/3 Pl no. 7, F-VF NH .EST(\$35). 22
- 466 ** 1908 20c Pumper plate sp/3 Pl no. 11, F-VF NH .EST(\$40). 22
- 467 Cv 2005 20c Consumer LP no. 1 on Gill Craft FDC, pair Fine, clean, unaddr. .EST(\$25). 12
- 468 Cv 2125 5.5c Star Route Truck plate sp/5 no. 1 combo FDC both mint (col hides no.) & precl. Artmaster cachet, unaddr. .EST(\$40). 18
- 469 Cv 2127 7.1c Tractor plate sp/4 no. 1 both mint & precl on combo FDC, Artmaster cachet, clean, unaddr. .EST(\$30). 14
- 470 Cv 2127a 7.1c Preclinet plate sp/3 no. 1 on Artmaster FDC, sp VF-XF, clean, unaddr, hand ccl. .EST(\$24). 12
- 471 ** 2136 25c BREADWAGON IMPERF PLATE Sp/6 no. 4, VF NH .EST(\$150). 180
PH
- 472 Cv 2149 18c Washington pairs both mint & precl on Colorado FDC w/no 3333 & 3333 on B of pairs, clean, unaddr. .EST(\$40). PH 40
- 473 Cv 2149a 18c George Washington plate sp/3 no. 11121 on Artmaster FDC, hand ccl, sp VF, unaddr. .EST(\$35). 20
- 474 Cv 2150 21.1c Letters plate sp/3 no. 11111 on Art Craft FDC, sp VF, clean, unaddr. .EST(\$20). 10
- 475 Cv 2252 3c Connecticut plate sp/3 no. 1 on Van Natta hand painted FDC sp VF-XF, unaddr. .EST(\$20-30). 28
- 476 Cv 2263 20c Cable Car plate sp/3 no. 1 on Anagram hand painted FDC no. 10 of 50, clean, unaddr, sp VF-XF. .EST(\$30). 14
- 477 Cv 2266 24.1c Tandem plate sp/3 no. 1 on Anagram hand painted FDC, no. 43 of 50, sp VF, attractive .EST(\$30). 14
- 478 Cv 0139 "D" Official plate sp/3 no. 1 on Gill Craft FDC, clean, unaddr, sp XF .EST(\$35). PH 40
- 479 ** Plate Number Coil Collection, sp/3 F-VF & better, in mounts in Scott Specialty album. Incls issues to 1985, 93 diff mostly low priced sps, but does incl several 9.3c & 0135. Retail approx \$500 Good beginner collection. .EST(\$350-400). 200
- 480 ** PLATE NUMBER COIL COLLECTION, sp/3 F-VF & better through 1985 issues. Incls 161 diff sps, mounted in Showgards in Scott Specialty album. No major keys present but many \$10-20 sps. Retail approx \$850. Good collection to build from. .EST(\$600-700). 450
- 795 ** 2136 25c Breadwagon sp/7 w/4 imperf & 3 perf. XF sp showing equipment break down NH .EST(\$125). PH 75
- 796 ** 2281a Roll of 80, Fine NH, design barely clears btm, w/2 Pl no. 1's, both completely at T, one sp/3 as no. 2ad from last. .EST(\$600). 220