

PNC



COIL LINE

March 1991

Vol. IV No. 3

Whole No. 33

Rob Washburn, President
P.O. Box 840
Showhegan, ME 04976

Harold Brown, Editor
909 Parker St.
Bowling Green, Ohio 43402

Interest strong in APS circuits

As of mail received Saturday, Feb. 16, 95 members of the Plate Number Coil Collectors Club (PNC3) have returned their survey forms regarding establishment of an American Philatelic Society circuit dedicated to plate number coils.

Of that total, 90 indicated they were already members of the APS.

Of the 90 APS members responding, 67 indicated an interest in receiving a circuit dedicated to plate number coils. Of the 67, 49 said they would prepare at least on book for a PNC circuit. Several indicated an ability and desire to supply several books of material. Most indicated an ability to supply 1 or 2 books, while others estimated up to 20 books.

Many of those who indicated they could not supply circuit books cited lack of extra material as the reason. Others said they had no experience preparing books and a few said they did not have the time to prepare books. Also cited was the length of the time the books may remain in the hands of the APS, 18 months.

Several who were interested in preparing circuit books said they were not aware of the requirements or the amount of material needed.

Ken Lawrence reported having had an exchange of correspondence with the APS Sales Division five years ago on this topic. "At that time, no one I spoke to was willing to prepare circuit books with PNCs because of the 18-month wait for payment.

"However, the plate number singles circuits are well worth getting. The last few I've received have had about half PNCs, including mint strips, at very attractive prices."

Many members wrote additional comments on their survey forms, some signed and some anonymous. Among the other comments were:

— "I'd like to get this started. Lets all help. It's the ideal way to move items under \$5, of which there are many."

— "If I were a member, I wouldn't mind receiving PNC material. As to preparing a sales book, I would, depending on the guidelines."

— "I'd prepare several, mostly used singles and pairs."

— "You should have another question: 'Would you join APS is it had a PNC circuit? Yes.'"

(Continued on page 5)

Scarce commercial, FD covers in auction

What is likely the largest ever auction of plate number coil material on cover, including first day covers and several scare autopost covers, is being offered at mail bid auction by Stamps 'N' Stuff, West Des Moines, IA.

Much of the material has been gleaned from a hoard (i.e. a barn full) of commercial covers from the early 1980s found and purchased by Jerry Koepf. The hoard has yielded several earliest known use (EKU) and earliest non-philatelic cancellations known for the plate number examples (EPU).

Koepf is hopeful the auction will help set the market. Each of the lot carries an estimate based on his knowledge of the market and help from others, such as Rob Washburn and Ken Lawrence, who have been highly involved in this field of collecting.

Among the items are:

— 18c Flag No. 1 postmarked 4/29/81, ENP, the earliest known commercial usage of an plate number coil stamp, the only example known. There is a \$200 estimate on the No. 10 cover.

— 18c Flag No. 6, 10/3/81, with a purple machine cancellation, EKU. Two covers are known used this date. No. 10 envelope, estimate of \$2,500.

— 18c Flag No. 7, 10/21/81, EKU, may be rarest of all used during the 18c letter rate period.

Others known were after the rate increased to 20c. The estimate is \$3,000.

— 18c Surrey, No. 1, 5/28/81, purple machine cancel, lightning bolt plate crack variety, est. \$200.

— 18c Surrey, No. 3, 6/9/81, EMP, est. \$200.

— 18c Surrey, No. 12, no date, roller cancelled. Has stamp "damaged in handling in the postal service at Milwaukee Wi 53203 please accept our apology," est. \$25.

— Several examples of 18c Surrey plates 15 and 16, including an EKU of each. Also an 18c Surrey No. 18 with a pair of omnibus to make the 20c rate. Estimates of \$50 to \$250.

— 20c Pumper No. 14 8/4/82 lawyer to prisoner letter, an early use of a scarce (at least for the time) number, est. \$200.

— A complete set of 20c Pumper No. 1-16, est. \$600.

— Two lots of the complete set of 20c Consumer Education, est. \$40.

— Several 18c and 20c Flag FDCs, est. \$30 to \$400.

Bids close at 6 p.m. March 28.

The last several pages of this month's Coil Line detail the auction in a paid advertisement.

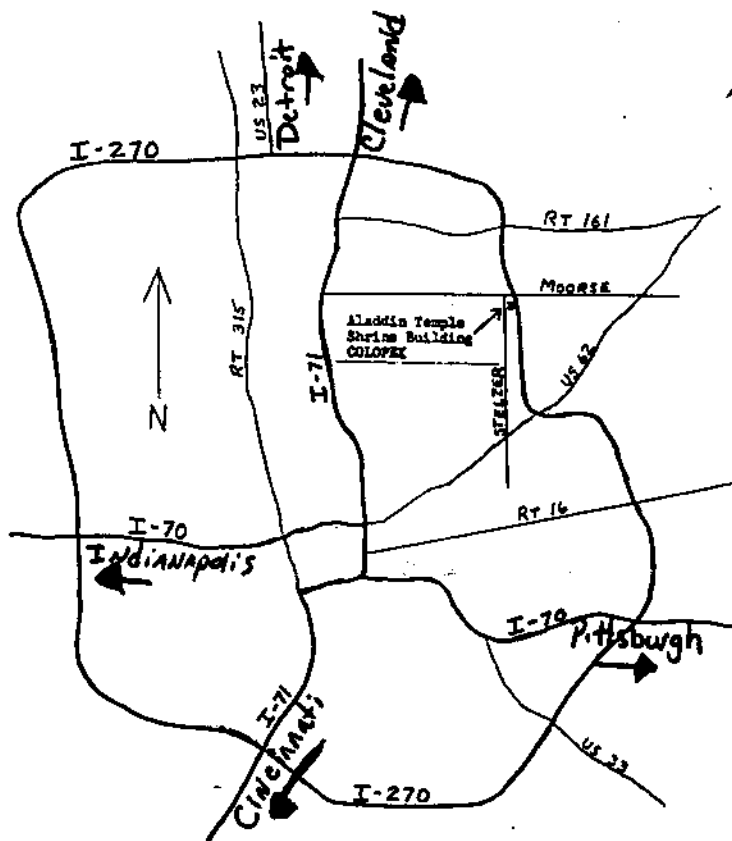
Regional meeting slated in Columbus

A regional meeting of the Plate Number Coil Collectors Club (PNC3) will be held in conjunction with COLOPEX Saturday, April 13 in Columbus, Ohio.

The meeting is scheduled from 4 to 6 p.m. The location of the show will be listed in the COLOPEX program and signs will be posted with selected dealers at the show to help interested individuals find the room.

The show is being held at the Aladdin Temple Shrine Building just off Interstate-270 (Exit 32) at Morse Road and Stelzer Road. This is on the northeast side of Columbus.

As the map below indicates, the show should be easily accessible to members from several states.



Map of Columbus, Ohio, area showing COLOPEX location

COIL LINE

Published monthly as the journal of the Plate Number Coil Collectors Club, also known as PNC3

The deadline for copy to be considered for the next issue is the 15th of the month, except as otherwise noted.

The February issue was mailed Jan. 24.

President: Rob Washburn, P O Box 840, Skowhegan, ME 04976

Distribution: Alan Thomson, P.O. Box 91 Northwood, NH 03261

Mailed under Bulk Rate Permit No. 1, Northwood, N.H. 03261

Change of address and membership applications should be sent to: Gene Trinks, Secretary, 3603 Bellows Court Troy, MI 48083

Dues are \$10 per year (\$14 if first class mailing of Coil Line is desired, and \$14 for all foreign mailing addresses) and should be sent to:

Richard L. Beecher, Treasurer
10779 Woodbine St Apt. 302
Los Angeles, CA 90034

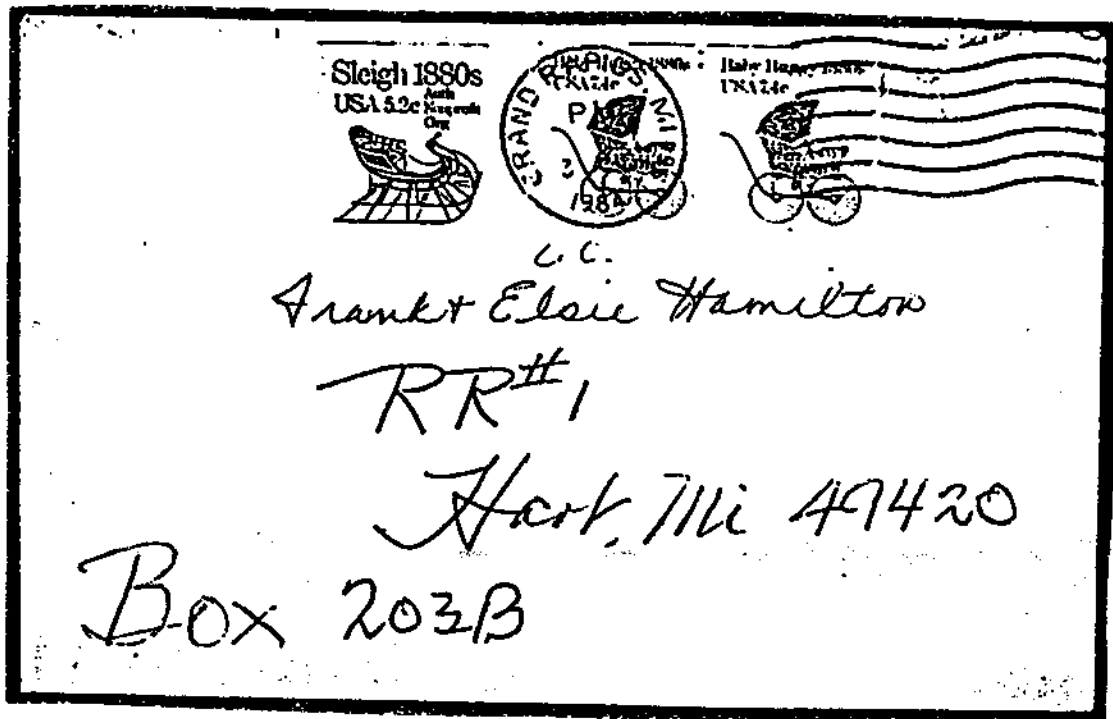
Advertising rates are \$42 for a full page, \$22 50 for a half page and \$12 for a quarter page. The cost is payable with the order. Checks should be made out to PNC3. Members are entitled to two, 40-word ads per year at no charge. All advertisements should be sent to the editor.

IMPERFORATE

Plate # strips
Our price list available
for 52c in postage.

WILLIAM S. LANGS

P.O. Box 46
New Milford, N.J. 07646
201-836-0880 FAX: 201-801-0460



Cover of the Month

This 7.4c Baby Buggy No. 2 cover dated August 3, 1984, is the earliest known usage of that particular coil on cover. This cover was originally believed to be a truly commercial cover, but investigative work by PNC3 mem-

ber Joann Lenz, has revealed that the cover was sent by a stamp collector. Thanks, Joann, for allowing us to illustrate your cover this month.

News from PNC3 members

In response to a report of overall tagging on the E coil, Ken Lawrence writes that Mike Covstney reported it immediately after the stamp was issued. "I refuted the report by showing a PS5 with the start of the effect. It's actually taggant bleed from the block tagging, probably caused by washup solvent. On the Andreotti press, tagging is applied by a gravure cylinder, not a flexo system—which means the printing surface is etched with a definite design."

Eric Russow, Des Moines, Iowa, reports the new F stamp is available there with plate 2222 in rolls of 100, plates 1222 and 1111 in rolls of 500 and plate 1211 in rolls of 3,000. Also, plate 1 of the 4c Steam Carriage and plate 15 of the 25c Flag coil.

From Stamford, Connecticut, Al Cibulskas reports finding plates 1111, 2222 and 1222 of the F stamp, depending on the size of the rolls.

From Houston, Texas, Dr. Joe Agris reports plate 1111 available in rolls of 500, while plates 2222 and 1222 are available in roles of 100 in and

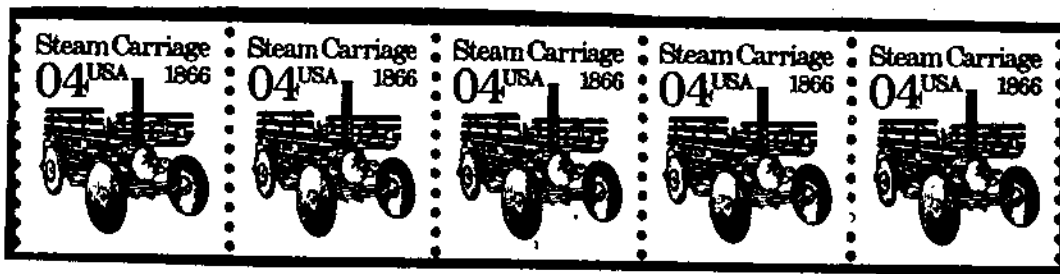
around the Houston area.

Calvin Cohen found plate 1111 in rolls of 100 and 500 of the F stamp at the Philatelic Sales counter in Baltimore on a visit Jan. 24. Also available were plates 5, 8, 11, 14 and 15 of the 25c Flag, several rolls of 500 of the 2c Locomotive plates 2&6. He also purchased the last roll of 1c Omnibus plate 1 in stock. The rolls was miscut and yielded several strips with plate 1 on top.

Steven Crown found rolls of 100 of the F stamp in League City, TX, with plate 2222.

Harold Brown has found plate 1111 in rolls of 500 at the Toledo Philatelic window and all copies available to date are badly centered. Rolls of 100 with plate 2222 are available in Bowling Green.

The Detroit area group of PNC enthusiasts met again Feb. 5 as a part of the monthly Ferndale, Mich., club event. The group is planning to meet at the annual Plymouth, Mich., Show April 27-28. No specific time has been announced and it will not be a regional meeting as was the case in 1990.



Commercial Covers

By Rob Washburn

This is my 25th commercial cover article since I began doing such articles over two years ago. I have several more planned topics to cover over the coming months, but I'm always open to any suggestions you might have for future articles. Let me hear from you with your ideas.

This month's article deals with the 12c Stanley Steamer coil. The Stanley Steamer coil was issued April 2, 1985 in the town of Kingfield, Maine, which is only about 30 miles away from my residence. The Cottrell version of the stamp can be found with sleeve numbers 1 and 2, both tagged and precancelled. Both tagged numbers and the precancelled (Cottrell) #1 are known on first day covers. The plate numbers are located every 24 stamps in a roll.

A B-press version of the 12c Stanley Steamer was released in 1987. There is no official first day of issue date. It exists only with plate number 1, and only precancelled.

The 12c Stanley Steamer precancelled coils met the first-class presort rate for postcards which lasted until April 2, 1988. Although not officially authorized as false franking, Stanley Steamer precancelled coils continued to be used until October of 1988.

The earliest reported Stanley Steamer coil usages on cover are as follows:


<u>Plate Number</u>	<u>Earliest Known Usage On Commercial Cover</u>
1 tagged	11/5/86
2 tagged	4/5/85
1 precancelled (Cottrell)	?*
2 precancelled	?*
1 precancelled (B-press)	9/3/87

*Cottrell versions of both of the precancelled numbers have been found on postcards with a printed 1986 date on them.


The cover pictured below is a rare usage of the 12c Stanley Steamer #1 B-press.

Reader's Digest
Pleasantville, N.Y. 10570

**ANNOUNCING
A READER'S DIGEST
GIFT TO YOU**



Stanley Steamer 1909
USA
12



First Class Mail

Mr. & Mrs. Harold Aiken
 1124-N. 26
 Quincy
 Illinois 62301

A one-year subscription
 to Reader's Digest®
 is presented to you with
 Holiday Greetings from:
 Mr. R. Laaker

X-C-88

I would value Stanley Steamer tagged PNC covers (virtually all of these are philatelic) at about \$5, or more, depending on the usage date. The precancels on actual commercial covers are quite scarce and should be valued \$15-\$20 each.

I want to report that a second 18c Flag #6 cover has been found with a . October 3, 1981 purple machine cancel. This brings the total number of 18c Flag #6 commercial covers to fifteen. I understand that five 18c Flag #6 covers were found in the latest batch of covers discovered by Stamps 'n' Stuff. Be watching for their upcoming auction. It should prove to be the best offering so far of PNC commercial covers. Other EKU finds include: 18c Surrey #3 (6/9/81), #5 (6/7/81), #9 (7/13/81), #10 (7/23/81), #12 (8/18/81), #15 (9/14/81) and #16 (9/13/81). Also, the EKU date reported last month for Surrey #2 (5/24/81) was in error. The correct EKU date should be 5/29/81. Also, an 18c Flag #7 cover has been found with a October 21, 1981 date. Other 18c Flag EKU finds include: #1 (4/29/81) and #5 (6/27/81). A Pumper #15 cover has been found dated July 12, 1982. There have also been a couple new EKU finds on the 20c Flag coil to report: #6 (7/27/82) and on #4 (7/12/82).

Next month, I'll cover the 21.1c Letters coil.

Interest strong

(Continued from page 1)

— "I have read comments about the APS giving PNC collecting more legitimacy through its collecting interests categories and others ways such as PNC sales circuits. I think the APS should support this. We are members and this is philately, Right?"

— "I hope APS will agree to handle this."

— "I used to subscribe to the APS PNC circuit. I withdrew my name and material because it was too time consuming. We should start our own sales circuit within the PNC3 club."

— "Don't mean to be negative as I think it's a great idea for those who are interested. Frankly it's too much trouble for me."

— "I'm not deep enough in PNCs to prepare any sales books."

— "I am in need of only one PNC strip of 5 at this time, an 1891 18c Flag No. 6. If you know of anyone who has one for sale, please advise."

— "It is suggested that mounts and books be available to hold strips of at least 5 and maybe strips of 7."

— "Please get circuits going. It's a great boost to our club."

— "Very exciting."

The editor will continue to tabulate results and information will be forwarded to PNC3 Secretary Gene Trinks who has been spearheading the effort with the APS.

Although most who conduct surveys are pleased with a 20 percent response, the editor would like to encourage those who have not responded to return their surveys. Additional comments and suggestions are welcome.

The APS offers sales books for singles, blocks and covers and also sells acetate mounts for use in the books. Hinges are also acceptable for mounting stamps. However, no special mounts are available for strips. Check with the APS Sales Division, P.O. Box 8000, State College, Pa. 16803 for order forms. Specific prices for the above products are printed

periodically in the APS journal "American Philatelist."

For APS members who might not have a sales book available, the rules for submitting sales books are printed below.

Mounting

1. Arrange stamps by country and in catalogue numerical order.
2. Ink must be used for all net prices. For the protection of the owner books with net prices changed will be rejected except where the item has been completely removed and space left blank.
3. If a stamp has an imperfection of any sort (i.e. thin, crease, tear, clipped perf., pin hole, uncut, but gum missing, etc.) it must be so labeled in the space occupied by that stamp.
4. Write legibly. Prices MUST be entered in the space provided only. It is best if net values are visible without lifting the stamp but under no condition will a book be accepted where a stamp or block covers the net value of another item.
5. Mount stamps securely (see instructions opposite page 4).
6. Special mounts permitted (see instructions opposite page 6).
7. The Sales Division accepts no responsibility for items that overlap or are mounted in gluing or other cloudy coverings since stamps so mounted cannot be properly photographed for identification purposes.
8. Do not use rubber cement or any adhesives which leave a residue that will adhere to other stamps or pages over the item is removed.
9. Blank spaces not used in the sales book need not be marked out. Leave them open plenty blank.

Pricing

10. Prices must be competitive if you desire good results (see comments, opposite page 8).
11. Do not waste time mounting material that belongs in penny approvals.
12. Sets may be offered as a unit (see instructions opposite page 18).
13. Do not submit books with a total net value of less than \$30.00 or more than \$500.00 (maximum limit of insurance coverage).

Charges

14. An insurance charge of 2% of the total net value (minimum 60¢) provides complete coverage against loss or damage while sales book is in the hands of the Sales Division.
15. Commission on sales is 30% with a minimum of \$3.00 per book.
16. Charges cannot be paid in advance. Together with any fines and cost of return postage and insurance, they will be deducted when settlement is made at time sales book is reured and returned to its owner.

Fines

17. Any stamp adjudged to be reperforated, regummed, repaired, cleaned, fiscally used, or otherwise altered, unless clearly identified as such by marking in ink in the space wherein the stamp is mounted, shall subject the owner to a fine of \$2.00 per stamp if the stamp is priced over \$10.00 and a fine of \$1.00 if priced \$10.00 or less. Counterfeit stamps, even if identified as such, or material offered "as is", will not be accepted.
18. Fines at the same rate may be levied where items are not labeled as required in Rule No. 3 above providing the owner has been previously warned in writing by the Sales Division.

Liability

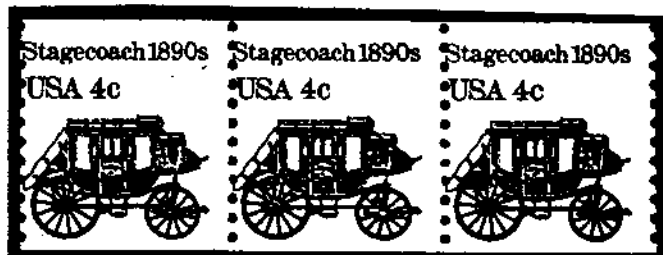
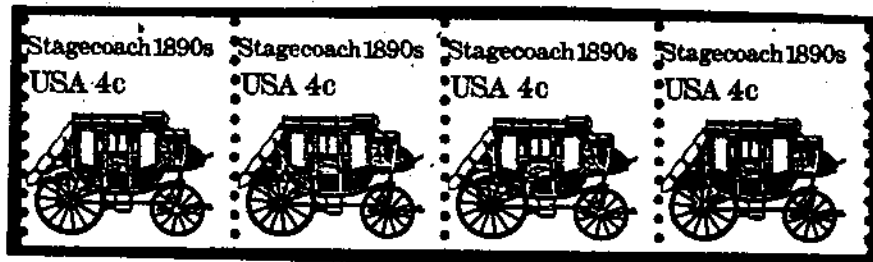
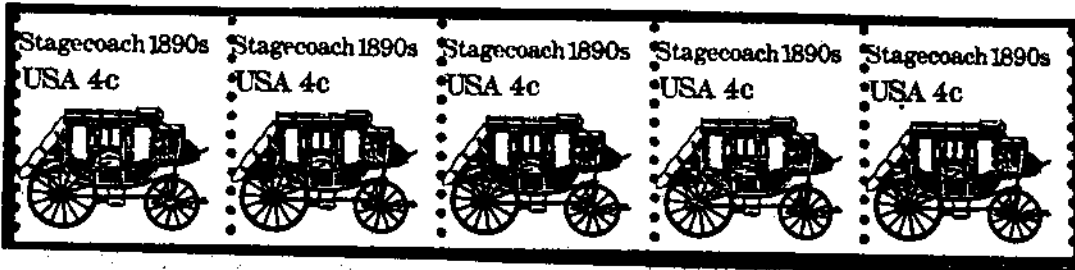
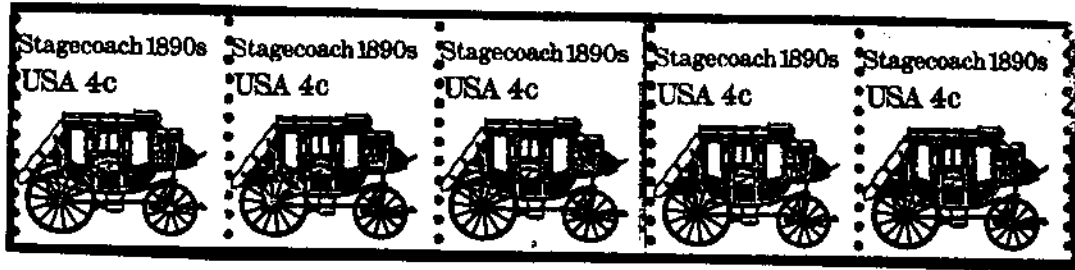
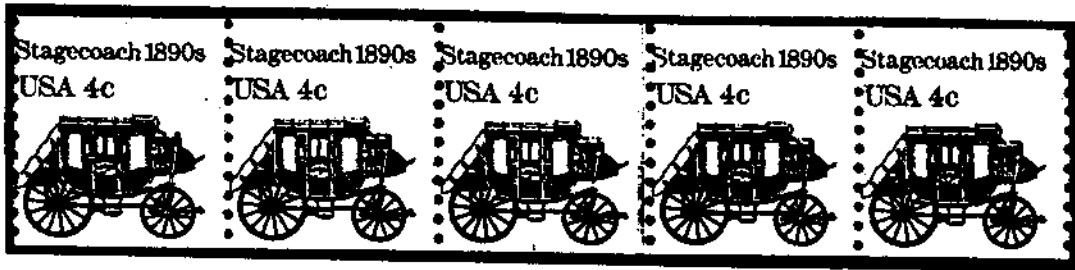
19. The Society accepts no responsibility for sales books until they are initially received from the owner for entry in the Sales Division. The Society liability ceases when the book is reured and delivered to the last known address of the owner.
20. The Society accepts no liability for any loss or damage to a sales book caused by climatic conditions unless there is conclusive proof of human negligence and accepts no liability for decrease in value of multiple stamps due to perforation separation.

Rejection

21. The Sales Division reserves the right to reject any book for any reason it deems appropriate. Reasons most frequently the cause for rejection are: stamps over-priced, not properly or securely mounted, over supply of material.

Stagecoach constant varieties

Jim Preuss, South Lake Tahoe, CA, has previously reported constant varieties to Al Cibulskas on the 4c Stagecoach Plate No. 2 known as the smoking front axel, worn rear tires and hollow driver's cab. He now reports the same on Plate No. 1. He purchased the stamps in a roll of 500 Dec. 11, 1990 at the main post office in Reno, NV, and broke it down before noticing the varieties. He went back Jan. 3, 1991 and purchased seven more rolls, nearly all showing the varieties. He attempted to order more rolls a week later and there were none available. Jim said except for mostly minor chill roller differences, any strip with as few as three stamps can be positioned. For example, The strip of 5 is plate 1, R3-7; the strip of 4 is plate 2, L 7-10; and the strip of 3 is plate 2, L9-11.



GUILFORD COUNTY TAX DIRECTOR
P. O. BOX 3487
GREENSBORO, N. C. 27402



Dr. Karen Kennedy
720 Guilford College Road
Greensboro, N.C. 27410



Imperf PNC pair on cover

Dr. Karen Kennedy of Greensboro, N.C., has furnished this copy of an imperf pair of the 20c FFlag, plate No. 20, mailed to her from the local tax department. Dr. Kennedy called the tax department to see if any more of the stamps existed but was told all had been used.

Ads

100 different PNCs MNH F-VF, some XF strips of 5 for \$150. 50 different for \$50. (Strips of 3 deduct 10%). Less than 50% of Linn's Trend values. Theodore Wajek, 5393 Sunrise Lane, Chippewa Falls, WI 54729.

Buying-Selling PNC strips of three and five. Also imperf pairs. Special prices. Send SASE for buy or sell lists (state preference). Reuben Klein, 4570 South Ocean Blvd., Highland Beach, FL 33487.

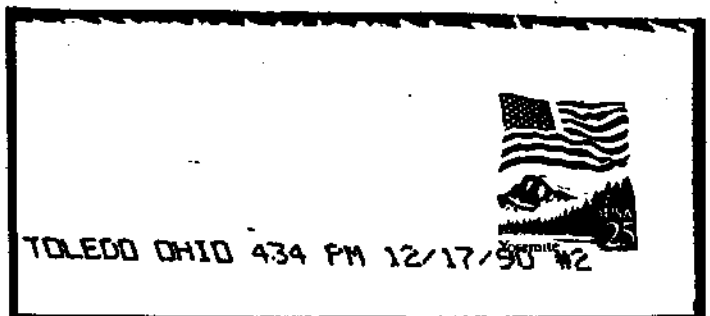
GET THEM WHILE THEY LAST! PNC booklets: *PNCs on Cover* and *PNC Varieties*. \$7.50 and \$12.50, respectively, postpaid, or both for \$18.00. There will not be any future editions of either of these two booklets, so get them now while they are still available! Rob Washburn, P.O. Box 840, Skowhegan, ME 04976.

NEW LARGE 20-PAGE 1991 illustrated error stamp catalog with over 440 different major and minor errors including coil pairs and sleeve number strips. \$1.00 plus SASE (52c postage). Send to Stan Goldfarb, 8520 Atwell Road, Potomac, MD 20854.

WANTED BY COLLECTOR: PNCs on Commercial covers (1st and other classes), USPS Olympic Slogans, Olympic and Sports Meters, US and Canadian Airmail Envelopes to Foreign Countries, Canadian definitives on cover, Glenn A. Estus, POB 451, Westport, NY 12993-0451.

I WISH TO TRADE my set of Zeps, C13, 14, 15, regummed over small faults, for one VF or better NH 18c Flag No. 6 PS3. Or make cash offer. Ken Lawrence, P.O. Box 3568, Jackson MS 39207, phone 601-969-2269.

ENVELOPES. "I SUPPORT Our Troops in the Persian Gulf" with flag-helmet cachet. Write for example and price. Guinn, P.O. Box 66303, Portland, OR 97266.



Jet-sprayed PNC?

This jet-sprayed "PNC" is one of several Coil Line Editor Harold Brown has found on commercial covers postmarked in Toledo. No. 2 is the only "plate" found to date!

STAMPS 'N' STUFF MAIL BID SALE
OF PLATE NUMBER COIL COMMERCIAL COVERS,
FIRST-DAY COVERS, RARE AUTOPOST COVERS, AND
OTHER MODERN U.S. POSTAL HISTORY

THE SCARCEST PNC MATERIAL EVER OFFERED!
SOME ONE-OF-A-KIND RARITIES!

CLOSING DATE THURSDAY, MARCH 28, 1991
NO BIDS WILL BE ACCEPTED AFTER 6 P.M.

STAMPS 'N' STUFF
2700 University, Suite 204
W. Des Moines, IA 50265

(515)-224-1737

Bid TOLL FREE 1-800-999-5964

TERMS

There is NO 10% BUYER'S PREMIUM in this mail auction. All lots will be sold at one advance over the second highest bid. In the event of ties bids, the earliest bid received by Stamps 'N' Stuff will prevail. Stamps 'N' Stuff will not be liable for errors or omissions in bidding, whether by the bidder or by Stamps 'N' Stuff. Any lot may be withdrawn before the closing date for any reason.

Bidding increments are as follows:

Bidding Level	Increment
Up to \$20	\$1
\$20 to \$50	\$2
\$50 to \$100	\$5
\$100 to \$200	\$10
\$200 to \$500	\$25
\$500 to \$1,000	\$50
Above \$1,000	\$100

Bids not conforming to these increments will be reduced to the next lower level, and will not receive preference over other bids at that level.

Some lots are described as EKU (earliest known use), the date of the earliest cancellation known for a particular plate number coil on cover, or ENP (earliest non-philatelic use), the date of the earliest reported cancellation on commercial cover, but for which earlier dated cancels exist on first-day covers. Dates described as EJU or ENP are accurate to the best of Stamps 'N' Stuff's knowledge, verified by two experts--Robert Washburn and Len Laurence--at the time this offering was prepared. The possibility that earlier finds may be made always exists, so these factors cannot be guaranteed.

Except for the EKU and ENP designations explained in the previous paragraph, all lots are guaranteed genuine as described. If purchaser desires an expert opinion, he may notify Stamps 'N' Stuff no later than 28 days after purchase that the item is being submitted to the American Philatelic Expertizing Service, the Philatelic Foundation, or the Expertizing Committee of the American First Day Cover Society for an opinion. In the event one of these authorities declines to issue an opinion that the lot is genuine, or finds that the lot is not genuine, the lot may be returned for a full refund of the purchase price plus expertizing costs up to 5% of the sale price to a maximum of \$50. Except for such notice, all sales are final.

Unless otherwise described, commercial covers are basically clean, and may have minor opening tears or other wear consistent with having passed through the mail. First-day covers are all cacheted, clean, and unaddressed unless otherwise noted. Stamps on all covers are at least fine to very fine, with perforations and margins clear of the design and plate number, unless otherwise noted. Some perforations may be short, but pulled perforations and other faults are described individually. All cancellations are in black ink unless otherwise noted.

If the size of a cover is not stated, it is small enough in its long dimension to fit horizontally on a typical 8 1/2 by 11-inch album page, ranging from small invitation-size envelopes, to #6 3/4, monarch, #7 (utility bill), or greeting-card envelopes. Larger envelopes are specifically described as #9, #10, or #11.

Payment of the entire purchase price, including payment for any lots that may be submitted for expert certification, is due from successful bidders upon receipt of invoice. Successful bidders without established credit may be required to pay before shipment. Buyers must pay shipping and insurance.

The placing of a bid by mail, fax, or telephone, shall constitute acceptance of these terms of sale.

PHOTO COPIES AVAILABLE

Photo copies of reasonable numbers of lots are available prospective bidders who submit long self-addressed envelopes plus 29c postage for the first three copies and proportional additional postage for each three additional copies.

PRICES REALIZED

All successful bidders will receive a list of prices realized. Others may obtain this list by sending a long self-addressed stamped envelope.

ABBREVIATIONS

- EKU Earliest known usage cancellation date for the plate number
- ENP Earliest non-philatelic cancel known for the plate number
- L Left
- LP Line pair
- PNC Purple machine cancel
- PMSC Purple machine slogan cancel
- PP Pulled perforation(s)
- PS Plate number strip
- R Right
- SC Slogan machine cancel
- SE Straight edge
- UO Unofficial first-day cancel (not "first-day-of-issue")

LOT DESCRIPTION ESTIMATE

FLAG COIL STAMPS

1	1891 18c Flag, no plate No., 4/29/81, #10 env., very early commercial use	\$ 20.00
2	Same as lot 1, but double canceled	15.00
3	1891 18c Flag, no plate No., 4/30/81	15.00
4	1891 18c Flag, no plate No., 5/1/81, PPL	10.00
5	1891 18c Flag No. 1, 4/29/81, ENP, EARLIEST KNOWN COMMERCIAL USAGE OF ANY PLATE NUMBER COIL STAMP, only example known, #10 env.	200.00
6	1891 18c Flag No. 1, 5/2/81, SC	50.00
7	1891 18c Flag No. 1, 5/2/81, #10 env.	40.00
8	1891 18c Flag No. 1, 5/22/81, PMSC	75.00
9	1891 18c Flag No. 1, 6/10/81, PMSC, one PP	35.00
10	1891 18c Flag No. 2, 5/10 or 18 or 19/81 (ENP if 5/10), stamp corner crease	20.00
11	1891 18c Flag No. 2, 5/19/81, SC	20.00
12	1891 18c Flag No. 2, 5/19/81	20.00
13	1891 18c Flag No. 2, 5/22/81, PMC, #10 env	50.00
14	1891 18c Flag No. 2, 5/30/81, #10 env	15.00
15	1891 18c Flag No. 2, 5/31/81, #10 env	15.00
16	1891 18c Flag No. 2, 6/15/81, PMC	50.00
17	1891 18c Flag No. 2, 8/3/81, PMSC	50.00
18	1891 18c Flag No. 3, 5/18/81, ENP, #10 env	100.00
19	1891 18c Flag No. 3, 5/19/81, PP, #10 env	50.00
20	1891 18c Flag No. 3, 6/9/81, #10 env. cancel hits plate No.	50.00
21	1891 18c Flag No. 3, 6/20/81	50.00
22	1891 18c Flag No. 3, 4/30/81, PMC, #10 env	75.00
23	1891 18c Flag No. 3, 8/3/81, PMC, #10 env	75.00
24	1891 18c Flag No. 3, 9/24 or 29/81, PMC	75.00
25	1891 18c Flag No. 4, 6/10/81, ENP, smeared cancel ink, short perfs right	50.00
26	1891 18c Flag No. 4, 6/16/81	30.00
27	1891 18c Flag No. 4, 6/16/81, #10 env	25.00
28	1891 18c Flag No. 4, 6/18/81, PMSC, light scratch across stamp and cover	50.00
29	1891 18c Flag No. 4, 9/8/81, PMC	50.00
30	1891 18c Flag No. 4, 9/21/81, PMSC	50.00
31	1891 18c Flag No. 5, 6/27/81, ENP, double canceled, #10 env	100.00
32	1891 18c Flag No. 5, 6/29/81, #10 env	20.00
33	1891 18c Flag No. 5, 7/15/81, PMC, #10 env	50.00
34	1891 18c Flag No. 5, 7/21/81, PMSC, #10 env	50.00
35	1891 18c Flag No. 5, 9/21/81, PMC, #10 env	50.00
36	1891 18c Flag No. 5, 10/3/81, PMSC, lower left corner of stamp missing	30.00
37	1891 18c Flag No. 6, 10/3/81, PMSC, EKU, EARLIEST KNOWN USE OF KEY PLATE NUMBER COIL STAMP, two covers known used this date, #10 env	2,500.00
38	1891 18c Flag No. 7, 10/21/81, EKU, EARLIEST KNOWN USE OF THIS PLATE NUMBER COIL STAMP, MAY BE RAREST OF ALL USED DURING 18c LETTER RATE PERIOD (only known! all others used after rate increased to 20c), light scratches across stamp and cover by canceling machine smear stamp's red ink slightly	3,000.00

39	1875	20c	Flag No. 2, 2/2/82, ENP, #10 env	15.00	102	1907	18c	Surrey No. 4, 6/12/81, cancel hits No.125.00	
40	1875	20c	Flag complete set of Nos. 1-14 on small envelopes (total 13, No. 7 doesn't exist), black cancels except No. 4 PMC	120.00	103	1907	18c	Surrey No. 4, 6/20/81, PMSC, very faint foxing	125.00
41	1895	20c	Flag Nos. 1-9, all PMC, all small env	70.00	104	1907	18c	Surrey No. 4, 6/24/81, #10 env	100.00
42	1895	20c	Flag Nos. 1-9, all PMC, #10 env	65.00	105	1907	18c	Surrey No. 4, 8/2/81	150.00
43	1895	20c	Flag Nos. 1-9, all small env	35.00	106	1907	18c	Surrey No. 4, 9/8/81, #10 env	150.00
44	1895	20c	Flag Nos. 1-9, all #10 env	30.00	107	1907	18c	Surrey No. 4, 9/14/81, PPSL, #10 env	60.00
45	1895	20c	Flag Nos. 10-14, all #10 env	65.00	108	1907	18c	Surrey No. 4, 9/14/81, #10 env	75.00
46	2280	25c	Flag No. 6 (pre-phosphored)	25.00	109	1907	18c	Surrey No. 4, 9/20/81, #10 env, cancel hits No.	75.00
TRANSPORTATION COIL STAMPS									
47	1897A	2c	Locomotive No. 8, strip/3 w/ No. left, SEL, canceled w/ mailer's permit postmark, paying nonprofit bulk rate, env has small wrinkles at bottom	40.00	110	1907	18c	Surrey No. 5, 6/7/81, ENP	45.00
48	1897A	2c	Locomotive No. 8 w/20c Truman, 11/2/87	20.00	111	1907	18c	Surrey No. 5, 6/14/81, SC, lt foxing	20.00
49	1898	3c	Handcar No. 2 w/22c Seashell, 4/4/88	20.00	112	1907	18c	Surrey No. 5, 6/15/81	20.00
50	1899	5c	Motorcycle No. 1 w/5c 4c Stagecoach, 11/14/88	20.00	113	1907	18c	Surrey No. 5, 6/24/81, #10 env	15.00
51	1899	5c	Motorcycle No. 3 + 3 unnumbered, 1987	20.00	114	1907	18c	Surrey No. 5, 6/30/81, #10 env	15.00
52	1899	5c	Motorcycle No. 4 P54 w/vending machine partial separation cuts, 12/24/84	40.00	115	1907	18c	Surrey No. 5, 7/15/81, PMC	40.00
53	1901a	5.2c	Stagecoach precancel No. 5, #10 env	20.00	116	1907	18c	Surrey No. 5, 7/22/81, PFR, #10 env	10.00
54	1901a	5.5c	Bicycle precancel No. 3, gap R	50.00	117	1907	18c	Surrey No. 5, 8/29/81, PMC, #10 env	35.00
55	1901a	5.9c	Bicycle precancel No. 4, #9 env	50.00	118	1907	18c	Surrey No. 5, 8/29/81, PMSC	40.00
56	2128a	8.3c	Ambulance precancel No. 1, #10 env	20.00	119	1907	18c	Surrey No. 5, 9/5/81, PMSC, "Antenna" plate crack, wrinkled #10 env	50.00
57	2128a	8.3c	Ambulance precancel No. 2, #10 env	20.00	120	1907	18c	Surrey No. 5, 9/13 or 15/81, PMSC, #10 env	35.00
58	2128a	8.3c	Ambulance precancel No. 4, #11 env	30.00	121	1907	18c	Surrey No. 5, 9/19/81, PMC, PPL, #10env	35.00
59	2231	8.3c	Ambulance B press pcl No. 1, #10 env	15.00	122	1907	18c	Surrey No. 5, 9/21/81, PMC	40.00
60	1903a	9.3c	Mail Wagon precancel No. 2, #10 env, small tear at L corner of stamp	35.00	123	1907	18c	Surrey No. 6, 6/12/81, ENP, #10 env	40.00
61	1903a	9.3c	Mail Wagon precancel No. 3, #10 env, usual short perfs L	50.00	124	1907	18c	Surrey No. 6, 6/15/81 (Likeliest reading: could be ENP if 6/10/81), #10 env	35.00
62	1903a	9.3c	Mail Wagon precancel No. 5, #10 env, perfs nick design L	40.00	125	1907	18c	Surrey No. 6, 6/16/81	20.00
63	1903a	9.3c	Mail Wagon pcl No. 5, #10 env, SEL	40.00	126	1907	18c	Surrey No. 6, 7/2/81, PMC, PPL, #10env	35.00
64	1906	17c	Electric Auto No. 3 pair (No. R) w/22c Flag, 7/23/86, #10 env.	20.00	127	1907	18c	Surrey No. 6, 7/30/81, #10 env	15.00
65	1906	17c	Electric Auto No. 4 w/ 22c Flag, 7/26/86, #10 env	20.00	128	1907	18c	Surrey No. 6, 8/2/81, PMSC	40.00
66	1906	17c	Electric Auto No. 4 LP w/ 22c Flag, 12/17/85, #10 env, No. touches edge	35.00	129	1907	18c	Surrey No. 6, 8/21/81, PMSC	40.00
67	1907	18c	Surrey No. 1, 5/26/81, ENP, SEL, cancel hits No.		130	1907	18c	Surrey No. 6, 9/4/81	15.00
68	1907	18c	Surrey No. 1, 5/27/81,	45.00	131	1907	18c	Surrey No. 6, 9/22/81, PMC, #10 env	35.00
69	1907	18c	Surrey No. 1, 5/28/81, PMC, "Lightning Bolt" plate crack	40.00	132	1907	18c	Surrey No. 6, 9/27/81, PMSC, #10 env	35.00
70	1907	18c	Surrey No. 1, 6/8/81, SC	25.00	133	1907	18c	Surrey No. 6 w/ 2c Americana tinted paper stamp (rate incr), 3/17/82, PMC, PPL #10env	35.00
71	1907	18c	Surrey No. 1, 6/15/81, #10 env	15.00	134	1907	18c	Surrey No. 7, 6/30/81, ENP, PMSC,	60.00
72	1907	18c	Surrey No. 1, 6/16/81, PMSC	25.00	135	1907	18c	Surrey No. 7, 7/6/81, PPL, #10 env	20.00
73	1907	18c	Surrey No. 1, 6/18/81, #10 env, magenta RETURNED FOR POSTAGE handstamp under stamp	25.00	137	1907	18c	Surrey No. 7, 7/15/81, PMSC	50.00
74	1907	18c	Surrey No. 1, 6/23/81, #10 env	15.00	138	1907	18c	Surrey No. 7, 9/19/81, PMC, PFR, #10env	35.00
75	1907	18c	Surrey No. 1, 6/24/81, PMSC, #10 env, light foxing	20.00	139	1907	18c	Surrey No. 7, 9/21/81, #10 env	20.00
76	1907	18c	Surrey No. 1, 6/25/81, #10 env	15.00	140	1907	18c	Surrey No. 7, 7/8/81, #10 env	20.00
77	1907	18c	Surrey No. 1, 7/4/81, "Lightning Bolt" plate crack	25.00	141	1907	18c	Surrey No. 8, 7/23/81	20.00
78	1907	18c	Surrey No. 1, 7/13/81, #10 env, "Lightning Bolt Continuation" plate crack	30.00	142	1907	18c	Surrey No. 8, 8/17/81	15.00
79	1907	18c	Surrey No. 1, 7/19/81, "Lightning Bolt" plate crack	25.00	143	1907	18c	Surrey No. 8, 8/21/81, PMC, #10 env	40.00
80	1907	18c	Surrey No. 1, 8/26/81, #10 env	15.00	144	1907	18c	Surrey No. 8, 9/14/81, PMSC, #10 env	40.00
81	1907	18c	Surrey No. 1, 8/29/81, #10 env	15.00	145	1907	18c	Surrey No. 8, 9/19/81, PMSC	45.00
82	1907	18c	Surrey No. 1, 9/15/81, #10 env	15.00	146	1907	18c	Surrey No. 8, 10/12/81, PMC, #10 env	40.00
83	1907	18c	Surrey No. 1 w/2c Americana "white paper" variety (rate incr), 3/20/81, PMC	40.00	147	1907	18c	Surrey No. 8 w/ 2c Americana white paper stamp (rate incr), 11/16/81, PPL	20.00
84	1907	18c	Surrey No. 2, 5/24 or 29/81, ENP, SC	45.00	148	1907	18c	Surrey No. 9, 7/13/81, ENP, PMC, PPL	50.00
85	1907	18c	Surrey No. 2, 6/4/81	20.00	149	1907	18c	Surrey No. 9, 8/18/81, PMC	40.00
86	1907	18c	Surrey No. 2, 6/11/81, PMC, #10 env, PPSL, cancel touches No.	25.00	150	1907	18c	Surrey No. 9, 8/23 or 25 or 27/81	15.00
87	1907	18c	Surrey No. 2, 6/12/81, SC, #10 env	15.00	151	1907	18c	Surrey No. 9, 8/29/81, perfs nick dex	15.00
88	1907	18c	Surrey No. 2, 6/17/81, PMC	30.00	152	1907	18c	Surrey No. 9, 9/16/81, pink A routing sticker, wrinkled #10 env	15.00
89	1907	18c	Surrey No. 2, 6/29/81, #10 env	15.00	153	1907	18c	Surrey No. 9, PMC, #10 env	35.00
90	1907	18c	Surrey No. 2, 9/21/81, PMC, #10 env	25.00	154	1907	18c	Surrey No. 9, PMSC, #10 env	35.00
91	1907	18c	Surrey No. 2, 10/6/81, PMSC, #10 env, plate No. split 50/50 top and bottom	30.00	155	1907	18c	Surrey No. 9, PMC, #10 env	35.00
92	1907	18c	Surrey No. 2 w/2c Jefferson coil (rate incr), 11/16/81, PMC	40.00	156	1907	18c	Surrey No. 9 w/ 2c Americana white paper stamp (rate incr), 11/16/81, PMC	40.00
93	1907	18c	Surrey No. 3, 6/9/81, ENP, lightly creased #10 env	200.00	157	1907	18c	Surrey No. 10, 7/23/81, ENP, PPL	40.00
94	1907	18c	Surrey No. 3, 6/15/81, #10 env	100.00	158	1907	18c	Surrey No. 10, 7/24/81, #10 env	20.00
95	1907	18c	Surrey No. 3, 6/16/81, SC	150.00	159	1907	18c	Surrey No. 10, 8/5/81	20.00
96	1907	18c	Surrey No. 3, 6/25/81, #10 env	100.00	160	1907	18c	Surrey No. 10, 8/24/81, PMC	40.00
97	1907	18c	Surrey No. 3, 6/26/81, canceled twice, both black and purple	75.00	161	1907	18c	Surrey No. 10, 8/27/81, PMSC, #10 env	35.00
98	1907	18c	Surrey No. 3, 6/30/81, #10 env	100.00	162	1907	18c	Surrey No. 10, 8/27/81, PMC, #10 env	35.00
99	1907	18c	Surrey No. 3, 9/20/81, PMSC, #10 env, PFR, perf nicks design	125.00	163	1907	18c	Surrey No. 10, 8/30/81, PMC, perfs nick design R, #10 env	30.00
100	1907	18c	Surrey No. 4, 6/1/81, ENP, #10 env	200.00	164	1907	18c	Surrey No. 10, 9/18/81, #10 env	15.00
101	1907	18c	Surrey No. 4, 6/8/81, #10 env	100.00	165	1907	18c	Surrey No. 10, 9/21/81, #10 env	15.00
					166	1907	18c	Surrey No. 10, 10/12/81, PMC	35.00
					166A	1907	18c	Surrey No. 11, 8/21/81, PMSC, corner of stamp creased, #10 env	40.00
					167	1907	18c	Surrey No. 11, 8/26/81, PPL	25.00
					168	1907	18c	Surrey No. 11, 8/26/81, #10 env	25.00
					169	1907	18c	Surrey No. 11, 8/27/81	25.00
					170	1907	18c	Surrey No. 11, 9/7/81, PMSC	40.00
					171	1907	18c	Surrey No. 11, 9/16/81, #10 env	20.00
					172	1907	18c	Surrey No. 11, 9/21/81, #10 env	20.00
					173	1907	18c	Surrey No. 11, 9/22/81, PMC, #10 env	40.00
					174	1907	18c	Surrey No. 11, no date, PMC	40.00
					175	1907	18c	Surrey No. 12, 8/18/81, EKV, PMSC, small light scrape R	60.00
					176	1907	18c	Surrey No. 12, 8/26/81, #10 env	20.00
					177	1907	18c	Surrey No. 12, 8/28/81, ccl over No.	15.00
					178	1907	18c	Surrey No. 12, 8/28/81, PPL, cancel hits No., #10 env	15.00
					179	1907	18c	Surrey No. 12, 9/4/81, small tear and crease L, #10 env	10.00
					180	1907	18c	Surrey No. 12, 9/11/81, PMSC, #10 env	40.00
					181	1907	18c	Surrey No. 12, 9/15/81, PMSC	45.00

182	1907	18c	Surrey No. 12, 9/19/81, PMC, #10 env	40.00	251	1908	20c	Pumper No. 4, 1/14/82	15.00
183	1907	18c	Surrey No. 12, 9/21/81, PMC, #10 env	40.00	252	1908	20c	Pumper No. 4, 1/18/82, PPL, #10 env	10.00
184	1907	18c	Surrey No. 12, no date, roller cancel, creased, torn, taped, stamped DAMAGED IN HANDLING IN THE POSTAL SERVICE AT MILWAUKEE WI 53203 PLEASE ACCEPT OUR APOLOGY, #10env	25.00	253	1908	20c	Pumper No. 4, 2/1/82, PMC	25.00
185	1907	18c	Surrey No. 13, 8/21/81, EKV cover (but earlier date on piece exists), #10 env	40.00	254	1908	20c	Pumper No. 4, 2/1/82, #10 env	10.00
186	1907	18c	Surrey No. 13, 8/22/81, FMSC	40.00	255	1908	20c	Pumper No. 4, 2/3/82, PMC, ccl hits No.	25.00
187	1907	18c	Surrey No. 13, 8/29/81, PPL, cancel hits No.	20.00	256	1908	20c	Pumper No. 4, 2/18/82	15.00
188	1907	18c	Surrey No. 13, 9/22/81, PPL, #10 env	15.00	257	1908	20c	Pumper No. 4, 2/19/82, PMC, #10 env	25.00
189	1907	18c	Surrey No. 13, 9/22/81, PMSC, #10 env	35.00	258	1908	20c	Pumper No. 4, 4/12/82, cancel touches No., #10 env	10.00
190	1907	18c	Surrey No. 13, 9/22/81, PMC, #10 env	35.00	259	1908	20c	Pumper No. 4, 4/14/82, PMC, PPL, #10 env	25.00
191	1907	18c	Surrey No. 13, 9/23/81, PMSC, PPL, #10 env	30.00	260	1908	20c	Pumper No. 4, 10/28/82, SC	20.00
192	1907	18c	Surrey No. 13, 9/23/81, SC over No.	15.00	261	1908	20c	Pumper No. 5, 1/3/82, ENP, PPL, #10 env	30.00
193	1907	18c	Surrey No. 13, 9/30/81, PMC, plate No. split 2/3 at top	25.00	262	1908	20c	Pumper No. 5, 1/14/82, #10 env	10.00
194	1907	18c	Surrey No. 13, 9/30/81, plate No. split 40% at top, PPL	10.00	263	1908	20c	Pumper No. 5, 1/27/82, PPL	10.00
195	1907	18c	Surrey No. 13, 10/13/81, PPR	15.00	264	1908	20c	Pumper No. 5, 2/13/82, PFL	10.00
196	1907	18c	Surrey No. 13, 10/13/81, lt foxing	15.00	265	1908	20c	Pumper No. 5, 2/18/82, PMSC, #10 env	25.00
197	1907	18c	Surrey No. 13, 10/13/81, PMC, rust stained, lt foxing, wrinkled #10 env	25.00	266	1908	20c	Pumper No. 5, 2/24/82, #10 env	10.00
198	1907	18c	Surrey No. 14, 8/27/81, PMC, #10 env	40.00	267	1908	20c	Pumper No. 5, 1/11/83, #10 env	10.00
199	1907	18c	Surrey No. 14, 8/28/81	25.00	268	1908	20c	Pumper No. 6, 1/4/82, #10 env	15.00
200	1907	18c	Surrey No. 14, 9/14/81, PMC, #10 env	40.00	269	1908	20c	Pumper No. 6, 1/16/82, #10 env	10.00
201	1907	18c	Surrey No. 14, 9/16/81, SC, PPR	15.00	270	1908	20c	Pumper No. 6, 2/2/82, PMSC, #10 env	30.00
202	1907	18c	Surrey No. 14, 9/19/81	20.00	271	1908	20c	Pumper No. 6, 2/18/82, #10 env	10.00
203	1907	18c	Surrey No. 14, 9/21/81, SC	20.00	272	1908	20c	Pumper No. 6, 2/21/82, cancel hits No., wrinkled #10 env	10.00
204	1907	18c	Surrey No. 14, 9/25/81, PMC, #10 env	40.00	273	1908	20c	Pumper No. 6, 12/22/82	10.00
205	1907	18c	Surrey No. 14, 9/30/81	15.00	274	1908	20c	Pumper No. 7, 3/17/82, SC, #10 env	15.00
206	1907	18c	Surrey No. 14, 10/2/81, #10 env	15.00	275	1908	20c	Pumper No. 7, 10/26/82, PMC	30.00
207	1907	18c	Surrey No. 14, 10/13/81, PMSC	40.00	276	1908	20c	Pumper No. 7, 10/29/82, SC; No. touches bottom of stamp	10.00
208	1907	18c	Surrey No. 15, 9/14/81, EKV, #10 env	250.00	277	1908	20c	Pumper No. 7, 1/15/83, ccl nicks No.	10.00
209	1907	18c	Surrey No. 15, 9/15/81	200.00	278	1908	20c	Pumper No. 7, 1/22/83, creased #10 env	10.00
210	1907	18c	Surrey No. 15, 9/19/81, tear L, #10env	150.00	279	1908	20c	Pumper No. 7, 2/24/83	10.00
211	1907	18c	Surrey No. 15, 9/21/81, No. cut so that 1/3 is missing at bottom, #10 env	150.00	280	1908	20c	Pumper No. 7, 3/13/83	10.00
212	1907	18c	Surrey No. 15, 9/29/81, #10 env	200.00	281	1908	20c	Pumper No. 7, 3/13/83, #10 env	10.00
213	1907	18c	Surrey No. 15, lines only ccl, #10 env	200.00	282	1908	20c	Pumper No. 7, 3/15/83	10.00
214	1907	18c	Surrey No. 16, 9/13/81, EKV, SC, cancel hits No.	250.00	283	1908	20c	Pumper No. 8, 4/14/82, PMC	30.00
215	1907	18c	Surrey No. 16, 9/14/81, cancel hits No., light foxing, #10 env	200.00	284	1908	20c	Pumper No. 8, 6/12/82, #10 env	10.00
216	1907	18c	Surrey No. 16, 9/15/81, PPR	225.00	285	1908	20c	Pumper No. 8, 10/29/82, ccl hits No.	10.00
217	1907	18c	Surrey No. 16, 9/28/81, torn corner missing from stamp, #10 env	150.00	286	1908	20c	Pumper No. 8, 11/1/82	10.00
218	1907	18c	Surrey No. 16, 10/3/81, PMC, wrinkled #10 env	250.00	287	1908	20c	Pumper No. 8, 11/17/82, SC, #10 env	10.00
219	1907	18c	Surrey No. 16, 10/6/81, SC, cut No. 2/3 bottom 1/3 top	175.00	288	1908	20c	Pumper No. 8, 11/19/82, PMC, #10 env	25.00
220	1907	18c	Surrey No. 16, 10/12/81, #10 env	200.00	289	1908	20c	Pumper No. 9, 11/21/82	10.00
221	1907	18c	Surrey No. 16, 10/12/81	225.00	290	1908	20c	Pumper No. 9, 12/2/82, SC, machine cut perfs, #10 env	10.00
222	1907	18c	Surrey No. 16, 10/13/81, #10 env	200.00	291	1908	20c	Pumper No. 9, 1/24/83, perfs cut des	10.00
No commercial covers are known for 18c Surrey No. 17 or 18, but					292	1908	20c	Pumper No. 9, 1/31/83, #10 env	10.00
223	1907	18c	Surrey No. 18 and pair of 1c Omnibus, 8/19/83 on plain addressed 1c Omnibus FDC sent through mail, smeared lines of cancel	50.00	293	1908	20c	Pumper No. 9, 3/4/83, SC hits No., #10 env	10.00
224	1908	20c	Pumper No. 1, 1/27/82, SC, short and PPsL, wrinkled #11 env	10.00	294	1908	20c	Pumper No. 9, 3/9/83, machine cut perfs, #10 env	10.00
225	1908	20c	Pumper No. 1, 2/3/82, #10 env	15.00	295	1908	20c	Pumper No. 10, 4/13/82, #9 env	15.00
226	1908	20c	Pumper No. 1, 2/19/82, PMC, #10 env	30.00	296	1908	20c	Pumper No. 10, 10/29/82, creased env	10.00
227	1908	20c	Pumper No. 1, 2/19/82, PMC, short and PPsR, #10env	25.00	297	1908	20c	Pumper No. 10, 1/11/83	10.00
228	1908	20c	Pumper No. 1, 2/22/82, ccl hits No.	10.00	298	1908	20c	Pumper No. 10, 3/5/83, SC #10 env	10.00
229	1908	20c	Pumper No. 1, 2/25/82, No. cut bottom	10.00	299	1908	20c	Pumper No. 10, cancel hits No.	10.00
230	1908	20c	Pumper No. 1, 2/26/82, PPsR	10.00	300	1908	20c	Pumper No. 11, 2/23/82, EKV, PPR	30.00
231	1908	20c	Pumper No. 1, 3/11/82, cancel hits No., #10 env	10.00	301	1908	20c	Pumper No. 11, 3/12/83, #10 env	20.00
232	1908	20c	Pumper No. 1, 3/18/82, PMC	25.00	302	1908	20c	Pumper No. 11, 4/9/82, PPR, #10 env	10.00
233	1908	20c	Pumper No. 1, 10/29/82, ccl hits No.	10.00	303	1908	20c	Pumper No. 13, 3/15/82, cancel hits No., #10 env	20.00
234	1908	20c	Pumper No. 2, 1/15/82, PPL, No. split top and bottom, #10 env	35.00	304	1908	20c	Pumper No. 14, 8/4/82, roughly opened and creased #10 envelope LAWYER TO PRISONER, early use of scarce No., cancel hits No.	200.00
235	1908	20c	Pumper No. 2, 2/16/82, SC, #10 env	50.00	305	1908	20c	Pumper No. 15, 11/18/82, PMC, PPsL	25.00
236	1908	20c	Pumper No. 2, 2/16/82, PMC, #10 env	100.00	306	1908	20c	Pumper No. 15, 11/20/82, PMC, PPsL	25.00
237	1908	20c	Pumper No. 3, 12/29/81, #10 env	15.00	307	1908	20c	Pumper No. 15, 2/2/83, #10 env	20.00
238	1908	20c	Pumper No. 3, 1/30/82, PPR	15.00	308	1908	20c	Pumper No. 15, 3/3/83, #10 env	20.00
239	1908	20c	Pumper No. 3, 1/31/82, PMC, cancel hits No., #10 env	30.00	309	1908	20c	Pumper No. 15, 3/15/83, SC, #10 env	20.00
240	1908	20c	Pumper No. 3, 2/2/82	15.00	310	1908	20c	Pumper No. 15, 6/4/83, PPR, #10 env	20.00
241	1908	20c	Pumper No. 3, 2/4/82, PMC, creased env	25.00	311	1908	20c	Pumper No. 15, 6/6/83, #10 env	20.00
242	1908	20c	Pumper No. 3, 2/10/82, PMSC, #10 env	25.00	312	1908	20c	Pumper No. 16, 12/6/82, creased env w/ 1/2-inch tear into cancel at top	25.00
243	1908	20c	Pumper No. 3, 2/16/82	10.00	313	1908	20c	Pumper No. 1-16 COMPLETE SET, all on small envelopes, Nos. 2 and 9 PFC, Nos. 3 and 13 SC, No. 14 touches edge, a few short perfs	600.00
244	1908	20c	Pumper No. 3, 2/26/82, #10 env	10.00	OTHER PNC COVERS				
245	1908	20c	Pumper No. 3, 3/16/82, PMC	25.00	314	2005	20c	Consumer Education No. 1-4 complete set, No. 1 SC, No. 3 #10 env	40.00
246	1908	20c	Pumper No. 3, 3/18/82	10.00	315	2005	20c	Consumer Education No. 1-4 complete set, No. 2 small env, rest #10, No. 1 SC	40.00
247	1908	20c	Pumper No. 3, 4/7/82, #10 env	10.00	PNC AND TRANSPORTATION COIL FIRST-DAY COVERS				
248	1908	20c	Pumper No. 3, 11/10/82	10.00	316	1891	18c	Flag No. 1 pair (No. R) Colorado	85.00
249	1908	20c	Pumper No. 4, 1/4/82, PMC	30.00	317	1891	18c	Flag No. 1 P53 Aircraft	150.00
250	1908	20c	Pumper No. 4, 1/8/82, cancel hits No., #10 env	10.00	318	1891	18c	Flag No. 5 pair (No. R) Colorado, cancel touches No.	150.00
					319	1895	20c	Flag No. 1 pair (No. R) Aircraft	30.00

320	1895 20c Flag No. 2 pair (No. L) Artmaster	135.00	357	2258 13c Patrol Wagon No. 1 PS3 on Gill/Craft/AFDCS show env w/AFDCS show cancel	25.00
321	1895 20c Flag No. 2 pair (No. L) Artcraft	135.00	358	2258 13c Patrol Wagon No. 1 PS3 on Gill/Craft/AFDCS show env w/smiling sun pictorial	25.00
322	1895 20c Flag No. 3 PS3 Artcraft, RARE	400.00	359	2259 13.2c Coal Car No. 1 PS3 on Uncovers env w/magenta Coal Run OH plug cancel; also plain S3 canceled FDOI	25.00
323	2124a 4.9c Buckboard precancel, no plate No., S3+S2 on Kribbs handpainted, RARE	500.00	360	2260 15c Tugboat No. 1 PS3 on Gamm env w/magenta Harbor City CA plug cancel	25.00
324	2124, 2124a, 2128, 2128a regular and precancel 4.9c Buckboard and 8.3c Ambulance, no plate No., on Kribbs handpainted, RARE	700.00	361	2263 20c Cable Car No. 1 PS3 on Gamm env w/smiling sun AFDCS show cancel	25.00
325	1900 and 1900a, 5.2c Sleigh regular pair and precancel gap pair, no plate No. on Kribbs handpainted	200.00	362	2263 20c Cable Car No. 1 PS3 on Denson handpainted env w/San Francisco 4-bar cancel; also plain pair canceled FDOI	25.00
326	1900 and 1900a 5.2c Sleigh regular No. 2 PS3 and precancel No. 1 LP on 5.2c embossed env KMC Venture, RARE	1,000.00	363	2265 21c Railroad Mail Car No. 1 PS3 on Gamm env w/magenta Pecos NM 4-bar cancel, cancel on plate No.	25.00
327	1900 5.2c Sleigh No. 2 PS3 on 5.2c embossed env, A.D. Henry handpainted, ONE OF 2	100.00	364	2115b 22c Flag over Capitol test coil No. T1 PS3 on NOJEX show env w/NOJEX pictorial show cancel	40.00
328	2125a 5.3c Star Route Truck precancel on Kribbs handpainted w/ 3.4c, 4c, 4.9c, 5.2c, 5.9c, 6c, 7.4c, 8.3c, 9.3c, 10.1c, 10.9c, 11c, 12c, 12.5c, and 17c precancels, some on back of env, Kribbs handpainted	40.00	365	2115b 22c Flag over Capitol test coil No. T1 PS3 on Uncovers env w/Washington DC large CDS	40.00
329	1901 5.9c Bicycle No. 3 and No. 4, both PS4 combined Artcraft	80.00	366	2115b 22c Flag over Capitol test coil No. T1 PS3 on Sautter overall cachet env w/Philadelphia B Free Franklin autograph pictorial cancel	40.00
330	1901a 5.9c Bicycle precancel pair, no plate No., on 5.9c embossed env w/5c postage due, Kribbs handpainted	275.00	367	2280 25c Flag over Yosemite No. 1 PS3 on Denson handpainted env w/Freedom CA 4-bar cancel; also plain single canceled FDOI	40.00
331	1901a 5.9c Bicycle precancel S3, no plate No., w/5c postage due, Kribbs handpainted	275.00	368	2280 25c Flag over Yosemite No. 8 PS3 on Denson handpainted env w/magenta Yosemite National Park plug cancel; also plain single canceled FDOI	40.00
332	2126 and 2126a 6c Tricycle regular PS4 and precancel PS3, both No. 1, Artcraft, controversial cover	300.00	369	2279 (25c) E Earth No. 1222 PS3 on Uncovers env w/red Washington DC Philatelic Sales Div plug cancel	75.00
333	2128a 8.3c Ambulance precancel no plate No. S3 Kribbs handpainted, RARE	500.00	370	2279 (25c) E Earth No. 1222 PS3 on Uncovers env w/magenta Washington DC National Capitol Station plug cancel	75.00
334	1904a 10.9c Hanson Cab precancel pair, no plate No., Kribbs handpainted, RARE	500.00	371	2279 (25c) E Earth No. 1222 PS3 on Gamm env w/large Washington DC CDS	75.00
335	1907 18c Surrey, No. 4 LP, Artmaster, RARE	500.00	372	2281 25c Honeybee No. 1 PS3 on Omaha Phil Soc show env w/pictorial Conestoga Wagon show cancel	75.00
336	1907 18c Surrey No. 4 PS3, Artcraft, RARE, ONLY TWO PSS KNOWN	1,400.00		SCARCE AUTOPOST COVERS	
337	1907 18c Surrey No. 5 LP, Bazaar	150.00	373	1b 25c machine 82 Washington DC 8/23/89 w/Washington 8/23/89 (first day) machine cancel, sent through mail, serial 00469	250.00
338	1907 18c Surrey No. 6 LP, Artmaster	150.00	374	4b 25c machine 83 Washington DC 8/23/89 w/Washington 8/23/89 (first day) slogan machine cancel, sent through mail, light creases on env, serial 00469	250.00
339	1908 20c Fire Pumper No. 1 LP, Artcraft	30.00	375	11 25c machine 82 Kensington MD 9/1/89 w/Suburban MD 9/1/89 (first day) machine cancel, sent through mail (bar coded) serial 27515	350.00
340	1908 20c Fire Pumper No. 2 LP, Artcraft, cut plate No., only 50% remains, none at top	200.00	376	1b 25c machine 82 Washington DC 8/23/89 w/40c Gilbreth stamp on 6-by-9 env w/magenta 12/23/89 plug cancel, sent through mail, serial 07209	25.00
341	2149 and 2149a 18c Washington Monument regular and precancel pairs (Nos. R), No. 3333 and 33333, Colorano	40.00	377	11b 25c machine 83 Kensington MD 9/1/89 and block of four 5c UN ICY commemoratives w/2/28/90 plug on #13 env, serial 08326	25.00
342	2150 and 2150a 21.1c Letters regular and precancel pairs (Nos. R), both No. 11111, Colorano	40.00	378	21 25c machine 11 Washington DC 12/1/89 w/magenta 12/1/89 UPU Congress Station plug and Washington DC slogan machine cancels, on 20th UPU Congress #10 env, RAREST AUTOPOST COVER, UNIVERSAL POSTAL UNION STATION, went through mail, serial 00048	1,000.00
	PNC UNOFFICIAL FIRST-DAY COVERS			SCARCE AMERICANA AND OTHER COVERS	
343	2226 2c Locomotive reengraved No. 1 pair (No. R) on Milcopex env w/pictorial show cancel	25.00	379	1811 1c Americana coil 4/29/81 underpaid solo usage, #10 env	10.00
344	1898 3c Handcar No. 1 PS3 w/ 15c Jimmie Rodgers commemorative on Farnam env w/Ropex pictorial handcar cancel	25.00	380	1811 1c Americana coil 4/28/81 underpaid solo usage, torn corner of stamp missing, #10env 5.00	
345	1898 3c Handcar No. 2 PS3 w/ 15c Jimmie Rodgers commemorative on Farnam env w/Ropex pictorial handcar cancel	25.00	381	1596d 13c Eagle and Shield L-perf, 5/24/76 commercial cover, #10 env, VERY SCARCE (?)100.00	
346	2252 3c Conestoga Wagon No. 1 PS7 plus single on Panda env w/Lancaster Conestoga Wagon pictorial and 4-bar cancels	25.00	382	1596d 13c Eagle and Shield L-perf, 2/17/77, on Long Beach Stamp and Coin Expo env w/National Crime Prevention Month pictorial (police badge) cancel	30.00
347	2252 3c Conestoga Wagon No. 1 PS3 on Gamm env w/Wagontown PA plug cancel	25.00	383	1892 6c Stars booklet stamp, three (pair and single) pay 18c letter rate in 1981 on commercial cover, #10 env	20.00
348	2452 5c Circus Wagon No. 1 PS5 on Artmaster env w/magenta Syracuse plug cancel	25.00	384	1935 and 1936, 18c and 20c James Hoban commemoratives, one of each on 12/12/81 (18c underpaid) and 1/8/82 commercial covers	20.00
349	2452 5c Circus Wagon No. 1 PS5 on Garik env (signed overall cachet) w/AFDCS Convention Station circus acrobat pictorial cancel	25.00			
350	2452 5c Circus Wagon No. 1 PS5 on Garik env (signed overall cachet) w/EMPEX NY map pictorial cancel	25.00			
351	2254 5.3c ELEVATOR pair and No. 1 PS3 on Gamm env w/Otisville NY 4-bar cancel	25.00			
352	2127a 7.1c Tractor 5-Digit ZIP+4 precancel No.1 PS5 on Gamm env w/COMPEX pictorial Baseball Hall of Fame 50th Anniv show cancel	25.00			
353	2255 7.6c Carreta No. 1 PS4 on San Jose Museum env w/San Jose Main Office large CDS; also S4 canceled FDOI	25.00			
	2128 8.3c Ambulance No. 1 PS3 on signed Carol Gorton overall cachet env w/Rescue CA 4-bar cancel	25.00			
355	2130a 10.1c Oil Wagon red precancel No. 2 PS5 on Gamm env w/Wagontown PA plug cancel	25.00			
356	2258 13c Patrol Wagon No. 1 PS2 on Glen env w/magenta Torrance CA plug cancel; also plain pair canceled FDOI	25.00			

385 1949 20c Bighorn Sheep UNTAGGED ERROR, 6/6/Bd.
PNC, nubbed corner perf 20.00

BULK LOTS

386 20 all different 1985-1988 PNC precanceleds on commercial bulk mail covers, mostly #10 env 100.00

387 500+ assorted 20c, 22c, and 25c Flag PNC covers (approximately 50 20c, 400 22c, 50 25c); the great majority on utility bill envelopes, some faulty, much duplication but plenty of variety 100.00

388 MYSTERY LOT, a huge sealed box weighing about 75 pounds filled with 18c letter-rate 1981 commercial covers, completely unpacked. You might find a new EKV or an 18c Flag No. 6 or 7 here! 400.00

Name _____
Address _____
City _____ State _____ ZIP _____
Telephone _____ APS# _____
VISA/MasterCard _____ Exp. Date _____

Please enter these bids for me in the Stamps 'N' Stuff mail sale:

Lot# Bid Lot# Bid Lot# Bid

COMPLETE PNC MINT STRIP COLLECTION

389 One of every regular and precanceled plate number coil in a mint strip of five, mounted in a luxurious slipcased SAFE mini-album. The key items are extra fine to superb. Some of the better items are in strips of six, such as 5.9c p/c 5-6, 17c p/c BA 5-6 (both Gap 11 and Line Gap are included), and 20c Consumer 1-2. A few are strips of seven even, including the superb 18c Flag No. 11 This has all the prephosphored papers, full-serif and tall-digit 25c Honeybees, dry gum 18c Washington, etc. It's the collection used to illustrate Linn's PNC Handbook, including the superb 18c Flag No. 6 on the cover. Retail value is \$11,000 to \$12,000, and the album cost over \$100. 9,500.00

Signature _____

Mail to: Stamps 'N' Stuff, 2700 University, Suite 204, W. Des Moines, IA 50265. 515-224-1737. Bid toll free 1-800-999-5964.

END OF AUCTION

Paid advertisement

Membership

Names of new applicants are published for members to review. Any member who questions the suitability of a prospect should contact the Chairman of the Membership Committee, Gene Trinks, 3603 Bellows Ct., Troy MI 48083, with the objection. The committee will investigate and recommend for or against membership.

Membership has reached 485.

New Applicants:

Mary Jo Sample
4501 Hale Street
The Colony, TX 75056
(612)

Jeff Schuster
P.O. Box 11579
El Paso, TX 79982
(613)

J. L. Meyer
20112 Westpoint
Riverside, CA 92507
(614)

Lynne Fitzgerald
108 E. Linfield Street
Glendora, CA 91740
(615)

R. Paul Baker
1310 Tycoon Way
Louisville, KY 40213
(616)

James L. Mangan
5667 Parkwalk Cir. E.
Boynton Beach, FL 33437
(617)

Orville R. Harris Jr.
P.O. Box 70
Umpqua, OR 97486
(618)

Jay Maisel
P.O. Box 30422
Florence, AZ 85232
(619)

Alvin Gerstenberger
P.O. Box 909
Glendale, AZ 85311
(620)

Richard M. Hunt
18081 S.E. Country Club Dr.
Little Club Bldg. 37, No. 361
Tequesta, FL 33469
(621)

Change of Address:
Jon C. Ragland
1735 - 1305 Brantley Rd.
Ft. Myers, FL 33907

Jerry B. Grove
PSC Box 152
APO San Francisco, CA 96827

Evelyn Perkins
No. 7 Dargate Court
Sacramento, CA 95838

Dean M. Hawk
130 S. Greenwich
Wichita, KS 67207

Mac Johnson
279 Roan Drive
Eugene, OR 97401

Correction:
The correct Zip Code for P.M. Dixon is 97305.

Resignations:
None reported.