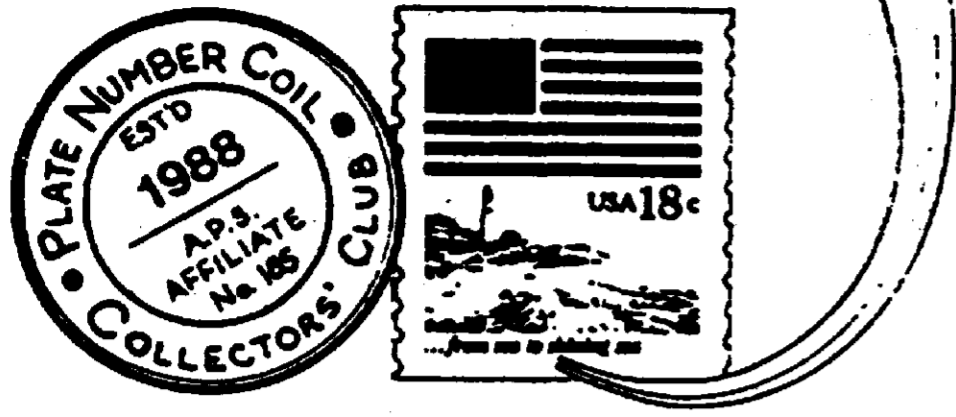


PNC³

Coil Line



Journal of the Plate Number Coil Collectors Club PNC³

<http://come.to/pnc3>

March 1, 2001

Vol. 14, No. 3

Whole Number 151

Gene Trinks, President
3603 Bellows Ct.
Troy, MI 48083
248-528-1857

Board Members

Jim Perry, VP

Don Eastman Secy.

Tom McFarland, Treas.

Dan Kauffman, At Large

John Petersen, At Large

Gene Ernst, Past Pres.

Harold A. Brown, Editor
909 Parker St.

Bowling Green, OH 43402

419-352-7900 (halallen@wcnet.org)

20 attend ARIPEX meeting

The PNC3 Regional Meeting Jan. 20 at ARIPEX, Tucson, AZ was attended by 20 members from all over the USA and Denmark.

The meeting from 10 to 11 a.m. was held in the Crystal Ballroom of the Tucson Community Center and was hosted by Dick Koenig. There were introductions, discussions, show and tell, trading. Door prizes were donated by Dave Cobb of Newport Harbor Stamp Club, and Dick Koenig.

The main topic of discussion was the status of the PNC catalogue. Up to date PNC3 Board information was reported by current board member John Peterson. Joann Lenz and Ken Lawrence added background information.

Doug Iams, Brent Williams, David Kemp, and Dwight Buschlein had items for show and tell and a great trading session spilled over into the lobby after the one hour meeting.

ARIPEX was an excellent stamp show with much to offer. Stamp Shows all over the USA usually do, but this was an exceptional stamp show. There were First Day of Issue ceremonies, superb exhibits, multi US and International dealers, Post Offices from all the Scandinavian countries, the USPS with an excellent stock of stamps, numerous society and club tables, and there were several dealers who had good stocks of PNCs. The world's most expensive stamp, the Sweden 3 skilling yellow and others were also on display. Czeslaw Slania, the premiere engraver of stamps was available at his own table all 3 days of the show.

Attendance at the show was excellent with a constant stream of collectors. Dealers were constantly busy. Advertising for the show was also excellent. The PNC3 congratulates ARIPEX, NORDIA, and the APS Ameri Stamp Expo whose combined efforts made this a show to remember.

- Dick Koenig

A message from the President:

Update on the PNC Catalog

It saddens me to report that we (your Executive Board) have been informed by Rich Nazar that he is unable to complete production of the catalog he has been working on. Consequently, those members who had placed an advance order for the first volume of the catalog will be receiving a refund check from Tom McFarland.

Some have already received them, but since there are a considerable number of checks to be written and Tom must attend to this chore in his spare time, it may take a few weeks to complete the effort.

As this is being written, the Board is in discussion with Rich to determine if the club could take on the production of the catalog as a club project. There are many considerations, but one of the most important is the ability to accomplish all the tasks needed to carry it forward with the resources available to us. Without a sufficient number of people (members) willing to contribute time and effort, we could not hope to successfully complete the catalog. At the moment, we have not identified the individuals who are willing and able to pitch in and make it happen.

If we go forward, Rich is willing to provide guidance, materials (photos, electronic files, etc.), and limited assistance in certain tasks. It would be our intention to work with the materials he has already produced, provide the finishing touches, do the production, and deliver a product as soon as possible.

(Continued on page 26)

Club auction list in this Coil Line

This issue of *Coil Line* contains the listing of lots in the 24th Club Auction. Auctioneer Joe Sedivy has prepared the 258-lot listing. The auction is smaller than usual and is printed in a different format. Please let the editor know if this format is easier to use.

Please note the deadline to submit bids is March 24, 2001 and that Joe must have your bids that day. Earliest bids win ties.

Catalog

(Continued from page 25)

Some of the tasks needing to be accomplished are:

- writing the introductions to the various sections;
- coordinating the pricing, including the various sub specialty items;
- doing the layout in a desktop publishing program;
- identifying and working with a printer to produce the product;
- handling orders and distribution;
- arranging for advertising;
- photography and image scanning.

There are undoubtedly a few categories I have overlooked in this overview, as well. They will become apparent as we go forward.

Of all our more than 800 members, I am convinced that we have the needed talents within our organization. It's a question of whether they are available to us for this project. I will therefore ask that anyone who can bring the needed skills and feels that he/she has some time to devote to this kind of project. Contact me if you can help. An e-mail or a note detailing the tasks you feel comfortable with will suffice. Addresses are at the top of the front page and on the first membership page.

To those who offered assistance with the many committees mentioned in the end-of-year survey, I have just received all the survey forms and will be contacting each of you individually to go over the needs in more detail. I sincerely appreciate your willingness to pitch in and contribute to the club and its members in this way. We need all the help we can get. For those who did not respond to this question, there is still room for more volunteers. Contact me as above if you can spare some time to become more active in your club's activities.

-Gene Trinks

PNC Web site has new address

The URL for the official Web site of the Plate Number Coil Collectors Club has been changed to <http://come.to/pnc3>

The URL is published near the top of each issue of *Coil Line*. This change is effective immediately, although the old address will continue to work for a while. Please change your bookmarks on your Web browser.

John Cropper (administrator@coilcorner.com) will be working with our Webmaster Ron Maifeld to make updates and changes to the site, taking into account the feedback from the recent membership survey that was part of the dues renewal process.

Cropper heads Publications Advisory Comm.

John Cropper has been named chairperson of the Publications Advisory Committee of the Plate Number Coil Collectors Club. He will be responsible for naming additional members to the committee.

-26-

Letters

Minnesota commercial cover report

To the Editor:

The following PNC covers were found while sorting approx. 80,000 covers during January. The covers came from a company that processes rebates, sweepstakes and promotions for national companies.

.01 Kestrel #1111 (BYCM)-12; #1111 (YMCB)-6; #2222-5; #3333-3. .02 Woodpecker #2222-1.

.20 Pheasant #1111-1; #2222-2.

.22 Uncle Sam #1111 (WAG)-1

.33 Berries #B1111-6; #B1112-0; #B2211-5; #B2221-2; #B2222-105; #G1111-27.

.33 Flag / City (WAG) #1111-5; #2222-12; #3333-1; (PSA)(RND.) #1111-1; #2222-2. (PSA) (SQ.) #2222-5; #4444-1; #5555-4; #6666-3; #7777-8; #8888-4; #9999-17; #1111A-20; #2222A-14; #3333A-20; #4444A-83; #5555A-19; #6666A-41; #7777A-6; #8888A-13; #9999A-11; #1111B-7; #2222B-24.

.33 Flag / City (BKLT.) #V1111-2; #V1112-4; #V1121-22; #V1122-20; #V1212-4; #V2212-2.

(.34) Non denom. Liberty (WAG) #1111-4; (PSA) (SQ.) #1111-25; (BKLT.) #V1111-26.

(.34) Non denom. Flowers #1111-2.

Dave Andrews 14615 285th St.

Onamia MN 56359-2869

Michael B Lipson

P O Box 2543

Reston VA 20195

703-860-1031, Fax 305-489-7709

mblipson@home.com

PNC Price List

All PNC Price List. Lowest prices, great, service. Select PNCs, mint, postally used, commercial covers, varieties, precancel gaps, variable rate, and PNCs with back numbers. No deposit new issue service available.

Variable Rate PNC5	Price Each
CV31c 32¢ new Font (S) 1.....	\$8.75
CV31c 34¢ new Font (S) 1.....	\$99.95
CV32 21¢, 34¢ 11.....	\$24.95
CV32 20¢, 22¢, 23¢, 33¢ A11.....	\$7.00
CV32 29¢, 32¢ 11.....	\$7.50
CV33 20¢, 21¢, 22¢, 23¢, 29¢ A11.....	\$7.00
CV33 32¢, 33¢, 34¢ A11.....	\$7.00

SNIPPETS

By Alan Thomson

New Numbers

There is a new PSA Wetlands number this month with cylinder combination 4444. The denominated versions of the Statue of Liberty and the Flowers coils are here. Both the WAG and PSA types of the Statue of Liberty have cylinder combinations 1111. The Flowers coil is B1111.

Blue Skies Smilin' at Me.

Nothin' but Blue Skies Do I See. Those are the opening lines to a very old song, but they fit the situation on a new color variety of the City Flag coil found by Dave Andrews. (If there's a generation gap here with any of you, please forgive me. I couldn't resist.) Dave sent a strip of five stamps that have a very different sky color than any we've seen thus far. It is a real blue shade, not the blue-green it's supposed to be. The stamps come from cylinder combination 5555A. Add this one to the previously reported half blue, half green type and BEP had a serious ink problem.

Hat "Hopper" Found

He's a busy guy, and this find belongs to Dave Andrews too. Dave has discovered a cover, post marked Cleveland, OH, 16 Apr 1999, bearing a PSA Hat plate number stamp 1111 that has the color order of the first two digits reversed. Remember those FOP "hoppers" with the first two colors in the plate number changing places? There were six of them, and some of the switching created false plate numbers. All were found only on used stamps. The Hat stamp has the blue ink shifted so far to the left that the blue 1 is in front of the red 1. In the black and white photo below color means nothing, but take a close look at the (blue) hat band. It's way off to the left. There is also a very big gap between the brim and the band.



Surrey #17 with PMC

Part of the plate number is cut and the bottom of the number appears at the top of the stamp, but that doesn't detract from the fact Dan Forgues found and owns the only Surrey #17 ever reported with a purple machine cancel. It's a single, not on cover. New, and sometimes unique, things keep coming from the old Transportation series coils. Dan's success should spur on the mixture sorters.

DAV Changes with the Times

The rate change has caused DAV to change the stamps it's using on its return envelopes. Before the change it was five Circus Wagons and four Woodpeckers. The five Circus Wagons are still there but the Woodpeckers have been replaced by three Conestoga Wagons. Could this lead to more Conestoga plate numbers?

Count Grows for 13231A VP

There is another report of a FOP 13231A 10/10 VP used single. Dan Forges says he gave up an 18¢ Flag #6 used single to get it. Since he stated he'd sent in a photocopy, I assume this is not a previously counted copy. It brings the totals for this scarce stamp to 20 used singles, 10 covers, five mint singles and eight mint strips. There will probably be a few more before the FOP disappears from mixtures.

Non-denominated SOL Dates Differ

The 2000 date on the PSA (34¢) Statue of Liberty seems to have two different kinds of printing. I first learned of this from Sherwood Day, but several others observed it too. One type has a light, almost gray inking while the other has bold black printing in the date. This does not appear to be a case of simple ink density. The two types are split about evenly in rolls that are available in post offices. This hints at the possibility that BEP made two black cylinders with the same 1 suffix.

City Flag "Red Brown" Tricky

Apparently there is some confusion about what the "Red Brown" color variety of the FOC really looks like. The key to being sure you've got the real one is the color of the flag's red stripes. Those stripes are such a deep red they look almost black. The building color is not the only thing to check.

Wetlands Date Differences

The dates on stamps seem to occupy a lot of interest lately, with all the size, font and impression differences. Now there appears to be a variance in some of the dates on the Wetlands coils. Combinations 1111 and 2222 have very slightly narrower dates, while combinations 3333 and 4444 are wider. The difference comes from the space between the 9's in 1998. The size change does not generate new strips to look for because the date size is consistent for each plate number.

D Press Kestrel Is CPV Mine

I think somebody rolled those D press Kestrel cylinders around on the floor before they were put on the press. Another constant variety has appeared from that printing and involves the black cylinder. Ed Kerr got a couple of strips from a machine that have a pronounced black line starting at the bottom of the vertical line in the ¢ sign and arcing down to the red wing feathers. Add it to the uncountable others.

Berries Removed

The Berries coils have been removed from the roll chart to make room for the new SOL and Flowers coils.

CURRENT ISSUE NUMBERS & ROLL SIZES

02/10/01

AMT

KEY: A-100, B-500, C-3000, D-10000

EP - EMBEDDED PHOS UT - UNTAGGED
 SP - SURFACE PHOS [xx] - NUMBER INTERVAL
 BK - BLOCK TAG (NL) - LINERLESS
 OA - OVERALL TAG * **NEW NUMBER**

Plate number intervals are shown in brackets following the stamp name. If more than one is indicated, the order is that in which the different printer's plate numbers are listed.
 Example: Juke Box [24] for BEP, [14] for Sennett Security.

PRINTER PLATE NUMBER PREFIX LETTERS:

A - American Bank Note	S - Sennett Security Prod.
B - Banknote Corp of Am.	V - Avery-Dennison
G - Guilford Gravure	None - BEP
M - MMM	

33c FLAG [24]

#1111 C, D
 #2222 A, C
 #3333 C

33c FLAG (SA) [24]

#1111 A
 #2222 A
 #3333 A
 #3433 A
 #4443 A
 #4444 A
 #5555 A
 #6666 A
 #7777 A
 #8888 A
 #9999 A
 #1111A A
 #2222A A
 #3333A A
 #4444A A
 #5555A A
 #6666A A
 #7777A A
 #8888A A
 #9999A A
 #1111B A
 #2222B A

33c FLAG (SA) [21]

#1111 C, D
 #2222 C, D

(34c) LIBERTY [24]

#1111 C

(34c) LIBERTY (SA) [24]

#1111 A

(34c) FLOWER (SA) [12]

#B1111 A

34c LIBERTY [24]

#1111* C

34c LIBERTY (SA) [24]

#1111* A

34c LIBERTY (SA) [21]

#1111* C, D

34c FLOWERS (SA) [12]

#B1111* A

20c COG RAILWAY [48]

#1 A, B, C
 #2 A, B

10c CANAL BOAT [48]

#1 A, C (BK) [52]
 #1 B, C (OA) [32]
 #1 C (EP) [52]
 #2 B, C
 #3 C
 #4 D (OA)
 #4 C (EP)
 #5 D

5c CIRCUS [48][24][14]

#1 B, C (OA) [32]
 #1 B, C (UT) [52]
 #2 C
 #A1 D
 #A2 D
 #A3 D
 #S1 D
 #S2 D (GLOSS)
 #S2 D (SHINY)

3c CONESTOGA [48]

#1 A, B, C [52]
 #2 C
 #3 C (DULL)
 #3 B, C (SHINY)
 #5 C (LARGE #)
 #5 C, D (SMALL #)
 #6 C, D

22c U. SAM (SA) [24]

#1111 A

22c UNCLE SAM (24)

#1111 C

20c BLUEJAY (SA) [14]

#81111 A

20c PHEASANT (SA) [24]

#1111 A

#2222 A

2c WOODPECKER [24]

#11111 D

#22222 D

1c KESTREL [24]

#1111 B, C (TYPE I)

#1111 B (TYPE II)

#1111 C (TYPE III)

#2222 C

#3333* C

(5c) MOUNTAIN [24][14]

#11111 B, C

#8111 D

(5c) MTN (SA) [21][15]

#1111 C

#V222222 D

#V333323 D

#V333333 D

#V333342 D

#V333343 D

(5c) WETLANDS [14]

S1111 D

(5c) WETLND (SA) [21]

#1111 C (light color)

#1111 D (dark color)

#2222 C, D

#3333 C, D

#4444* D

(10c) LION (SA) [21]

#811111 D

(10c) GREEN BIKE [14]

#8111 B, D

(10c) G. BIKE (SA) [21]

#1111 D

#221 D

#222 D

#333 C, D

#344 C

#444 C, D

#555 C, D

#666 C, D

#777 C, D

#888 D

#999 D

(10c) E&S (NEW) [24]

#11111 D

#22222 D

(10c) E&S (NEW) (SA) [21]

#11111 C, D

#22222 D

#33333 D

(15c) TAIL FIN [24][14]

#11111 C

#811111 D

(15c) TAIL FIN (SA) [21]

#811111 D

(25c) JUKE BOX [24][14]

#111111 B, C

#212222 B, C

#222222 C

#332222 C

#S11111 D

#S22222 D

(25c) JUKE (SA) [21][21][7]

#111111 C

#222222 D

#811111 D

#822222 D

#M11111 D (NL)

(25c) DINER [14]

#811111 D

(25c) DINER (SA) [21]

#11111 D

#22211 D

#22222 D

#33333 D

#44444 D

■ The Wetlands color differences are in the stamp background. The #2222 background color does not match either of the #1111 colors.

■ The Kestrels differ in the order of color laydown. Colors are black, yellow, cyan and magenta. Type I sequence is BYCM. Type II is BCYM. Type III is YMCB. The color order shows in the plate number.

Membership

Names of applicants are published for members to review. Any member who questions the suitability of a prospective member should contact the chairperson of the Membership Committee, Joann Lenz, 37211 Alper Drive, Sterling Heights, MI 48312, with the objection. The committee will recommend for or against membership.

New applicants:

Richard T. Moore
P.O. Box 1327
Yonkers, NY 10702-1327

Josef Stern
96 Flower Road
Valley Stream, NY 11581

Earle Schulman
5002 Estate Dr.
Greensboro, NC 27405

Paul M. Dixon
2023 41st Ave. NE
Salem, OR 97305

Bruce Haefemeyer
3760 Cottonwood Lane N.
Plymouth, MN 55441-1468

Charles Hile
842 S. Orange Grove Blvd.
Pasadena, CA 91105-1742

John J. Sakosits
799 Park Ave. Apt. 9B
New York, NY 10021

Al Light
4083 Orleans Lane
Sarasota, FL 34232

Changes of address:
Elwood Gibson
1854 Birch Ct.
Conyers, GA 30094

Michael Mules
P.O. Box 270252
Milwaukee, WI 53227
Phone - (414) 322-1853

J.R. Haislet
30277 N. Nautical Loop Road
Spirit Lake, ID 83869-8819

James W. Hooghe
10015 Mallet Dr.
Dayton, OH 45458-9648

Trygve Blom
1325 Grasslands Blvd. Apt. 112
Lakeland, FL 33803-5443
(Continued on next page)

Slide shows available

Members interested in obtaining PNC slide shows for use at local club meetings and stamp shows should contact John Peterson, 6987 Coleshill Dr., San Diego, CA 92119-1953 or call 619-466-3443.
jkpete@pacbell.net

PNC³ meetings

A monthly listing of scheduled Regional and Annual Meetings will be published in *Coil Line*. Regional Meetings are to be arranged through John Peterson, Regional Meeting Committee Chairperson, 6987 Coleshill Dr., San Diego, CA 92119-1953. 619-466-3443.

It would be helpful if someone involved with the planning or attending the meeting would submit a report to *Coil Line*.

John will make sure the editor is notified so that ample notice can be included in *Coil Line*. The local organizer can also submit additional information, but please make sure to give yourself plenty of lead time.

April 28, 2001 - Plymouth Show, Plymouth, MI. Central Middle School. Time to be announced. Gene Trinks is in charge. The updated slide show, information exchange and trading are on the agenda.

Annual Meeting August 2001
APS Stampshow - Aug. 26-29, Chicago, IL. Details will be announced early summer. The general membership meeting is usually held on Saturday.

COIL LINE

Published monthly as the journal of the Plate Number Coil Collectors Club, also known as PNC³. Copy must be in the hands of the editor no later than the 15th of the month. The February issue was mailed Jan. 25.

President: Gene Trinks, 3603 Bellows Ct., Troy, MI 48083.
gctrinks@sprynet.com

Distribution: Alan Thomson, P.O. Box 91, Northwood, NH 03261 or mrsnips@tds.net Mailed under Bulk Rate permit No. 1, Northwood, NH 03261. Contact Alan first about which back issues he has in stock. He may refer you to Charles Still at 15826 N.E. 184th St., Holt, MO 64048 for older issues. Please include an SASE. There is a modest charge to cover expenses.

Changes of address: Should be sent to and membership applications are available from Don Eastman, Secretary, 24 Bemis St., Berlin, NH 03570. east@landmarknet.net

Mailing list: Rental of the club mailing list is available. A one-time usage of labels costs \$50. Contact the secretary (above).

Dues: Are \$10 per year (\$15 for First Class mailing of *Coil Line*, \$15 for Canada and Mexico and \$20 for all others) and should be sent to Tom McFarland, Treasurer, P.O. Box 756 Princeton Jct., NJ 08550
pnc3treasurer@home.com

Advertising rates: Are \$42 for a full page, \$24 for 1/2 page and \$12 for 1/4 page per issue. A check or money order made payable to PNC³ must be submitted with the advertising copy. All copy should be sent to the Editor, 909 Parker St., Bowling Green, OH 43402-2107.
E-mail - halallen@wcnnet.org
Members are entitled to two free, 40-word ads per year. Word ads are available at 6 cents per word per issue to nonmembers and those members who have used their free ads.

Ads

OPERATION HEAD START! 200 different used PNC coils only \$29.95. Harry Rahn, 6316 LaSalle Road, Delray Beach, FL 33484.

SELLING MY IMPERFS VF-NH. Pairs about half Scott. 1816b \$100; 1901b \$95; 1903b \$60; 1904b \$75; 1906b \$85; 1907a \$80; 1908a \$55; 2005d \$50; 2130b \$50 black; 2135a \$295; 2259d \$50; 2279d \$45. Bob Mohr, 46 Sammy Jo Circle, Fondulac, WI 54935.

PNC USED SINGLES, used strips and MNH PS5s. Great prices! Visit <http://www.angelfire.com/ca5/HimesPNCs> or send SASE for details. John Himes, P.O. Box 453 Cyprus, CA 90630-0453.

Membership

(Continued from previous page)

Jesse Halperin
3160 Holiday Spring Blvd.
Apt. 101, Bldg. 7
Margate, FL 33063

Mary Jo Sample
10336 N. Centerville Rd.
Williamsburg, IN 47393

Resignations:

J. William Davis #1487
Marian Douglas #254
Gordon Crabtree#1431

E-mail addresses:

John Larimer -
larimerpncbns@gateway.net

Ron Maifeld -
PNC3@zoomtown.com

Michael Mules -
mcmules@webtv.net

Membership Update

Last total809
New members8
Total817
Resignations.....3
Deceased1
New total813

Dick Koenig -
denali@ultrasw.com

Tom McFarland -
pnc3treasurer@home.com

Exhibiting

Please forward all exhibiting reports directly to the Coil Line Editor, 909 Parker St., Bowling Green, OH 43402 or halallen@wcnnet.org until further notice.

No information submitted this month.

Have a new number, tip, or need a quote for an item not listed? E-mail John at admin@coilcorner.com! PNC3 #1460

CoilCorner.Com

Our name is our web address; visit us today!

I stock coils from  to  and beyond!

- ✓ Online eCommerce Catalog
- ✓ Downloadable Color PDF Catalog
- ✓ Free Monthly Electronic Newsletter
- ✓ Notification by E-mail of New Issues
- ✓ Mint Coil Line Pairs from 1938-1981
- ✓ Used PNC1s and Mint PS5s
- ✓ Major Tagging, Gum, Color Varieties
- ✓ Precancel Gap Positions

Your want lists are welcomed and I also offer a new issue service!

PO Box 340
Richmond, KY 40476-0340

phone: (859) 624-8359
fax: (520) 395-8345

PNC3 Auction #24 - CLOSING DATE MARCH 24, 2001

LOT	SCOTT#	DESCRIPTION	MIN.BID
A. Mint Plate # Singles & Pairs			
1	2902	5c Butte, (3), #S111, all with black bot. back #'s, 1110, 1530, and pair with 1390 on numbered stamp, XF	6.00
2	2905	10c Auto, (4), #S111, all with black bot. back #'s, 030, 310, 450, and pair with 310 on 1R, XF	12.00
3	2915A	32c FOP, #88898, 10x10, PV/VP, F-VF, red 1996	150.00
4	2915A	#13211A, 10x10, PV/VP, XF, red 1996	18.00
5	O135	20c Official, #1, VF, 1 short perf top right	10.00
6	(15)	Diff numbers includes 1903 #3&4, 1904, #1&2, 2150, 111111, #2608, S111, #2799. V1111111, F-XF	35.00
B. Mint Plate # Strips of 3			
7	1891	18c Flag, #4, XF	3.00
8	1891	#5, VF	2.00
9	1891	#7, S	10.00
10	1895	20c Flag, #4, VF-XF	19.00
11	1895	#9, VF	1.25
12	1895	#10, F-VF	1.25
13	1895	(11) #1-6,8-10,13,14, VF-XF, #2,5,8,10 have finger prints on gum	35.00
14	1895	(14) full set of #'s includes 1895e #14, all XF-S	30.00
15	1903	9.3c Mail W., #3, F-VF, line F-VF	5.00
16	1903	#4, VF, line F-VF	8.50
17	1903	#4, VF, line XF-S	5.00
18	1904	10.9c Hansom, (2), #1, one light shade other dark shade, S, lines both S	10.00
19	1904	SAME as above but plate #2	10.00
20	1904	#2, VF, line XF-S, has a small mark between spokes of wheel above #	4.00
21	1904a	10.9c Hansom PC, #3, XF, line XF, line gap	175.00
22	1904a	#4, VF, line XF, line gap	175.00
23	1907	18c Surrey, #10, XF, line S	3.00
24	1907	#15, XF, line XF	4.00
25	1907	#16, XF, line XF	4.00
26	1907	(18) COMPLETE SET of #'s, 1-18, XF-S, lines S	40.00
27	1908	20c Pumper, #2, VF, line XF	30.00
28	1908	#2, VF, bit low, line XF	75.00
29	1908	#5, F-VF, close @R, line F	1.00
30	1908	#6, XF, line S	10.00
31	1908	#13, F-VF, line F-VF	1.25
32	1908	#13, VF, line F-VF	1.50
33	2005	20c Consumer, #3, F-VF, line F-VF	6.00
34	2005	20c Consumer, (2), #1, VF, #2, XF, both lines XF	10.00
35	2005	(2) #3, VF, line VF, #4, VF, line XF	15.00
36	2115	22c Flag, #1, VF, couple of pulled perfs @R	2.50
37	2115	#3, VF, light fingerprint on gum	3.00
38	2115	#7, VF	2.50
39	2115	#13, F-VF	2.50
40	2115	(22) COMPLETE SET of #'s includes 2115b #T1, XF-S #3 has fingerprint on gum	20.00
41	2124&2124a	4.9c Buckboard, COMPLETE SET of #'s for this issue, #3&4, and #1-6, S, lines S	5.00
42	2129&2129a	8.5c TowTruck, #1, VF	1.25
43	O139 D	Official, #1, XF, one small gum skip bottom center.	24.00
C. Mint Plate # Strips of 5			
44	1891	18c Flag, #4, VF	4.00
45	1891	#7, XF	21.00
46	1900	5.2c Sleigh, #1, XF, line S	5.00
47	1900	#2, VF, line VF	5.00
48	1900	#3, VF, bit low, line XF	160.00
49	1900a	5.2c Sleigh PC, #4, S, line S	6.50
50	1901	5.9c Bike, #3, XF, line VF	6.00
51	1901	#4, XF, line XF	7.00

52	1902	7.4c Buggy, #1, VF, type II paper	5.00
53	1904a	10.9c Hansom PC, #1, S, line S, line gap	24.00
54	1907	18c Surrey, #7, VF, bit low, line XF	25.00
55	1907	(18) COMPLETE SET of #'s for this issue, most XF-S #6 is F-VF, lines VF-S, #5,7,13 have a couple of short perfs @L	100.00
56	1908	20c Pumpér, #6, XF, line XF	25.00
57	1908	#8, XF, line S	90.00
58	1908	#12, F-VF, line F-VF	4.00
59	2115	22c Flag, #3, VF, bit high	25.00
60	2115	#8, F-VF	2.00
61	2115	#13, VF-XF	6.00
62	2115	#14, S	18.00
63	2123a	3.4c SchoolBus PC, #1, S, line S, gap 1R	2.00
64	2123a	(2) #1&2, VF-XF, lines F-VF	5.50
65	2134	14c Iceboat, (4), (2ca) #1&2, VF-XF, lines VF-XF	5.00
66	2228A	4c Stage, #1, S, overall tag	6.50
67	2280	25c Yosemite, block tag, #1, S	4.50
68	2280P	25c Yosemite, prephos. #1, VF-XF	24.00
69	2280P	#1, XF	20.00
70	2280P	#1, VF	25.00
71	2280P	#8, XF-S	2.25
72	2464	23c LunchW. #3, VF, shiny gum, mottle tag, one fingerprint on gum	1.50
73	2518	F Flower, #1211, F-VF	10.00
74	2518	#1211, XF	10.00
75	2523	29c Rushmore, (3), #1, VF, #2&4, XF	6.00
76	2523	#8, XF, couple of short perfs @L	10.00
77	2523	#9, S	3.50
78	2529	19c Fishingboat, #A1112, XF-S	4.50
79	2602	10c E&S, #A12213, XF	10.00
80	2602	#11 10 10 10 11, XF	6.00
81	2602	(42) COMPLETE SET of #'s, include A32333 & A33334, the rare ones, XF-S	300.00
82	2606	23c Flag, presort, #A1111, XF	2.25
83	(12)	#2606, 2607, 2608, COMPLETE SET for this design, XF	18.00
84	2609	29c FOWhitehouse, #11&12, XF	5.00
85	2890	G Flag, Blue, (3), #1314, 2214, 5427, F-VF-XF, all have very light fingerprints on gum	6.00
86	2890	(3), #1314, 2223, 3433, XF all have very light fingerprints on gum	8.00
87	2891 & 2892	G Flag, Red, (3), #S1111, #S1111, #S2222, VF	7.00
88	2889-2892	COMPLETE SET of all G Flag numbers (41) Diff, XF-S	280.00
89	2905 & 2906	10c Auto, (4), #S111, S222, S333, S111, XF	4.50
90	2908-2910	15c Tailfin, #11111, #S11111, #S11111, XF	4.00
91	2913	32c FOP, #22322, XF	5.00
92	2913	#22322, S	5.50
93	2913	(2) #33333, 78767, VF	4.00
94	2913	#66666, XF	5.00
95	2915A	32c FOP, SA, #87898, (10x10), XF	5.00
96	2915A	#89898, (10x10), XF	5.00
97	2915A	#97898, (10x10), XF	3.50
98	2915A	#99899, (10x10), XF	14.00
99	2915A	#13211A, XF	40.00
100	2915A	#77777A, (10x10), VP/PV, VF	85.00
101	2915A	(2) #78777, (11x10), #99999, (10x10), VF	4.00
102	2915A	#87898, (11x10), VF	8.00
103	2915A	#89888, (11x10), F-VF	9.00
104	2915A	#97898, (11x10), XF	9.00
105	2915A	#99899, (11x10), F-VF	20.00
106	2915A	#12311A, VF	20.00
107	2915C	32c FOP, SA, #55555, (12x12), VF, no extra backing paper past end of strip both ends	2.00
108	2915C	#55555, (12x12), XF	5.00
109	3054	32c Yellow Rose, #55555, VF, no extra backing paper past end of strip both ends	2.00
110	3265	H Hat, (2), #2222, 3333, VF	4.00
111	3266	H Hat, #1111, VF, with top blue back # 0740 on #	7.00
112	3282	33c FOC, #2222, S, with blue bottom back #2440 on #	6.00
113	3453	34c Non-D, Liberty, #1111, VF-XF	2.50
114	3458-61	34c Non-D Flowers, #B1111, VF-XF	4.00
115	CV-31	29c Variable, #1, XF, shiny gum	4.75

D. Strips of 6 or Longer

116	1900a	5.2c Sleigh PC, PS-11, #3, VF, line VF, gap 6L	75.00
117	1900a	PS-11, #5, VF, line XF, gap 6L	75.00
118	1903a	9.3c Mail W. PC, PS-10, #8, S, line S, gap 2L	150.00
119	1906a	17c Auto PC, PS-11, #6A, XF, line VF, gap 5R	110.00
120	1906a	PS-9, #7A, XF, line VF, gap 4R	50.00
121	1906a	PS-8, #5C, XF-S, line F-VF, gap 3L	45.00
122	1906a	PS-10, #5C, VF, line XF, gap 5L, new find has a double bar break and "F" of First looks doubled also to the right of the gap, perf bend between 2 R stamps.	80.00
123	1907	18c Surrey, PS-7, #11, F-VF, line VF	5.00
124	2123	3.4c Bus, PS-7, #1, S, line S	1.50
125	2123a	3.4c Bus PC, PS-8, #1, S, line S, gap 2R	5.00
126	2124a	4.9c Buckboard PC, PS-9, #1, XF, line XF, gap 3R, new find a second gap top line only at 1-1/3R	75.00
127	2124a	SAME AS lot 126 but plate #2	75.00
128	2124a	PS-8, #5, VF bit high, line F-VF, gap 2-7/8R	120.00
129	2124a	PS-8, #6, VF bit high, line F-VF, gap 2-7/8R	120.00
130	2609	29c FOWhitehouse, PS-7, #2, VF-XF	2.75
131	2609	PS-7, #7, VF-XF	2.75
132	2915A	32c FOP, PS-7, #88898, (10x10), F-VF	165.00
133	2915A	PS-9, #99899, (11x10), F-VF	23.00

F. Imperfs

134	1897A	2c Loco, Pair, NO #, VF	29.00
135	2112	D Eagle, Pair, NO #, VF	25.00
136	2126a	6c Tricycle PC, Pair, NO #, VF	100.00
137	2133a	12.5c Pushcart PC, Pair, NO #, VF	29.00
138	2263	20c Cablecar, Pair, NO #, VF	40.00
139	2280	25c Yosemite, Pair, NO #, F-VF, high star field just clears	—
140	2463	20c Cog, Pair, NO #, VF	75.00
141	2603	10c E&S, PS-6, #11111, XF	75.00
142	2603	PS-6, #22221, XF-S	320.00

G. Misperfs

143	2609	29c FOW, Strip of 10, NO # folded in half, perfs between "S/A" of USA, XF Horiz.	45.00
-----	------	--	-------

H. Miscut

144	1898	3c Handcar, PS-5, NO #, VF-XF vert, line XF, from top row of web, number was cut off	3.00
145	1898	PS-5, #1, F-VF vert, line F-VF, # 100% at top	5.00
146	1898	PS-5, #2, F-VF vert, line F-VF, # 100% at top	5.00
147	1901	5.9c Bike, (2), #3, F-VF vert. line VF, # 70% at top and 60% bottom, #4, F-VF vert, line F-VF, # 80% top 50% bottom	10.00
148	1906	17c Auto, PS-7, #3, F-VF vert, line F, # 100% top	10.00
149	1906	(2) PS-5, #3&4, VF vert, lines F-VF, #'s 100% top	5.00
150	1906	(2) PS-7, #3&4, VF vert, lines VF, # 100% top	6.00
151	2280P	25c Yosemite, PS-5, #1, F-VF low, # 100% at bottom and 5% of second # at top	5.00

I. Constant Plate & Mat Varieties

152	2915A	32c FOP, PS-5, #87888, (11x10), F-VF, brown dot over "U" @1L	15.00
153	2915A	PS-5, #87898, (11x10), VF, brown dot over "A" at 1L	9.00

J. Tagging Varieties

154	2260b	15c Tug, PS-6, NO #, F-VF, tag omitted error	10.00
155	2260b	PS-5, #2, F+, close @L, tag omitted error	50.00
156	2279	E Earth, PS-1, #1111, VF, tagging shift 7mm R, thru "ME" of Domestic	2.00
157	2279	PS-5, #1111, VF-XF, Same as lot 156	4.00
158	2529	19c Fishing boat, PS-5, #A5555, S, untagged error	5.00
159	2603	10c E&S, PS-5, #22221, XF, tagged error	12.00
160	2903	5c Mountain, PS-5, #11111, XF-S, tagged error	40.00

K. Other Varieties

161	1596d	13c Eagle, Upper Left Plt blk of 12, XF, perf 11	225.00
162	2115	22c Flag, Pair, NO #, VF-XF, Erie Blue	21.00
163	2115	PS-5, #4, F-VF, Erie Blue, some kind of paper flaw	100.00

		in blue star field of R stamp of strip	
164	2175B	10c Red Cloud, Blk of 4, VF, untagged error	40.00
165	2280	25c Yosemite, ATM booklet, Equitable bank Pittsburgh, PA NO #, F-VF, does not match the picture on pg 1-33 of PNC catalog	5.00
166	2280	Strip of 6, NO #, F-VF, Black trees with ski slope perf bent between 2R stamps	50.00
167	2466b	32c Ferryboat, PS-5, #5, XF, Bronx Blue	75.00
168	2523	29c Rushmore, Strip of 4, NO #, VF-XF, Red color see page 1-41 of 1995 PNC catalog	15.00
169	2523	SAME	15.00
170	2523c	29c Rushmore, Strip of 3, NO #, XF, Toledo Brown	10.00
171	2647-2696	29c Wild flowers, Complete used set off paper, F-VF	5.50
172	2723A	29c Hank Williams, Block of 3, S, perf 11.2 x 11.4	40.00
173	2609	29c FOW, Strip of 5, NO #, XF, Chicago Blue, (Indigo)	20.00
174	2891	G Flag Red, PS-5, #S1111, XF, with black top back #2340	5.00
175	2891	PS-5, #S1111, XF, with black bottom #2510	5.00
176	CVP1	Auto post, 25c Value strip of 4 with tab, VF	25.00

L. First Day Covers

177	2115b	22c Flag Test, Single NO #, on size 6 white cover with address label and artical about stamp as cachet glued to cover and sealed in P.O. wrapper	.50
178	2127A	7.1c Tractor Zip+4, PS-4, #1, on Complex Show cover VF	3.00
179	2529	19c Fishing boat, PS-3, #A1212, VF-XF, on Aircraft FDC	5.00

M. Other Covers

180	1891	18c Flag, PS-1, #3, VF, tied to size 6 window utility cover by 27 May 1981 Hartford, CT BMC	7.50
181	1895	20c Flag, PS-1, #9, tied to size 6 white cover by lift-off cancel and PS-1 #14 tied by landing cancel for the STS-20 flight of the Discovery space shuttle, VF-XF	7.00
182	2115	22c Flag, Erie Blue, NO # single not tied to size 6 blue window utility cover, some short perfs noted	10.00
183	2260	15c Tug, PS-2, #2 plus 2c Loco to make 32c rate tied to size 7 white window utility cover by 18 Jul 1996 Waterbury, CT, BMC	2.50
184	2280	25c Yosemite, IMPERF single, NO #, VF, tied to size 8 utility cover by 3 Jul 1989 Grand Rapids, MI, BMC	5.00
185	2518	F Flower, PS-1, #1211, tied to pink size 6 utility cover, VF by Traverse City, MI 12 Jun 1992 BMC	11.00
186	2915A	32c FOP, PS-1, #89898, (11x10), VF, tied to size 6 window utility cover by 8 Oct 1996 Manchester, NH, BMC	5.00
187	2915A	PS-1, #99899, (11x10), tied to size 6 window utility cover by 16 Oct 1996 Manchester, NH BMC, F-VF, # is partially covered by cancel	35.00
188	3208A	25c Dinner SA, PS-1, #11111, on size 10 cover from AT&T, with window, XF	4.50
189	3208A	PS-1, #22222, on size 10 window cover from N-B- LIEBMAN Furniture, XF	4.50
190	3228	10c Handlebars, PS-1, #999, on size 10 window cover from PSE, XF	4.50
191	1895	20c Flag, (13), #1-6, 8-14, F-VF, #2 thin, #11 stain	2.50
192	1900a	5.2c Sleigh PC, #3, VF-XF, shows rare line gap, short perfs @R but there	---
193	1900a	#3, VF, shows rare gap @1L	---
194	1900a	#5, F-VF, shows rare line gap, short perfs @L, almost a straight edge	---
195	1900a	#5, F-VF, shows rare gap @1L	---
196	1900a	#6, F-VF, perfs short but there @L	6.50
197	1900a	(4) #1,2,3,5, F-VF, #1&2 have perf faults, #1 split # 50/50	2.00
198	1901a	5.9c Bike PC, #5, S, perfs short but there @L	35.00
199	1903a	9.3c Mail W.PC, #2, VF, perfs short @L	5.00
200	1904a	10.9c Hansom, #2, VF	4.50
201	1904a	#3, F-VF, perfs short but there @R	15.00
202	1904a	#4, F-VF, perfs 75% cut @R	6.50
203	1904a	#3, VF, line gap, short perf @L, but all there	22.00
204	1904a	#4, VF-XF, line gap, Perfs short but all there @R	22.00
205	1906	17c Auto, (4), #1-4, F-VF	2.00

206	1908	20c Pumper, (14), #1-11,13,15,16, F-VF, #1-3,5,8,11 have perf faults	4.00
207	2005	20c Consumer, (4), #1-4, F-VF, #3 has 1 pulled perf @L	2.00
208	2115	22c Flag, #13, VF	5.50
209	2280P	25c Yosemite, (11), #2,3,5-11,13,14, F-VF, couple of faults noted	3.00
210	2466B	32c Ferry, #5, VF, Bronx Blue	40.00
211	2523C	29c Rushmore, #7, VF-XF, Toledo Brown, 3 short perfs at bottom right	70.00
212	2603B	10c E&S, #22222, VF, tagged error with wavy BMC	150.00
213	2603B	(2) #11111, #22221, VF, tagged error	7.00
214	(10)	(6), 2602, (2), 2603, (2), 2604, all diff numbers, VF	13.00
215	2609	29c FOW, (16), #1,3-16, dble of #3, F-VF, few faults noted	3.00
216	2891	G Flag, Red, #S1111, F-VF, with bottom back #1780	15.00
217	2891	#S1111, F-VF, with top back #0940	15.00
218	2891	(2) #S1111, F-VF, both with bottom red back #1880 & 2940, one has perf faults @L	6.00
219	2903A	5c Mountain, #11111, VF-XF, tagged error	30.00
220	2914	32c FOP, #S11111, VF-XF	1.25
221	2914	SAME	1.50
222	2915A	32c FOP, SA, #89899, (10x10), PV/VP F-VF centered to R on paper	50.00
223	2915A	#87888, (11x10), PP/VV, VF	20.00
224	2915A	#99899, (10x10), PV/VP, F-VF, on paper	5.00
225	2915A	SAME	5.00
226	2915A	(2) #9.9999, (11x10) & (10x10), VF	10.00
227	2915B	32c FOP, SA, #S11111, VF	1.25
228	2915D	32c FOP, SA, #11111, (10x10), XF	2.00
229	3304 & 3406	33c Berry, COMPLETE SET of #'s for this issue (6)	3.50
230	O135	20c Official, #1, XF	5.50
231	O139	D Official, #1, XF	13.00

O. Used Strips of 3

232	1895	20c Flag, (5), #1,5,9,10,13, F-VF	2.00
233	1900	5.2c Sleigh, (2), #1&2, VF, lines VF	5.00
234	1901	5.9c Bike, (2), #3&4, F-VF, lines VF-XF	5.00
235	1902	7.4c Buggy, #1, XF	3.00
236	1903	9.3c Mail W., (2), #1&2, F-VF, lines VF	8.00
237	1903a	9.3c Mail W. PC, #4, VF, line VF, red hand cancel	5.00
238	1904	10.9c Hansom, (2), #1&2, F-VF, lines F-VF bit high	10.00
239	2115	22c Flag, #14, VF, # on left stamp, Hvy black hand cancel	13.00
240	O135	20c Official, #1, VF	8.00

P. Misc.

241	(8)	Diff bubble wrap fronts from 20c Bluejay, 32c Yellow rose 20c Pheasant, 32c FOP, 33c F&B, "H" Hat	---
-----	-----	--	-----

Q. Club Donations

242	1905a	11c Caboose PC, PS-3, #1, XF, paper T-IIa	---
243	2454	5c Canoe, PS-3, #S11, XF	---
244	2252	3c Conestoga, (2), PS-5, #1, VF-XF, block tag shift to R	---
245	3044	1c Kestrel, PS-5, #(-)1111, XF	---
246	3206	5c Swamp, PS-5, #S1111, XF	---
247	1907	18c Surrey, FDC, NO#, single used on Colorado Silk with Agnes DeMille Cachet for Women's History Series	---
248	2127AB	7.1c Tractor, (8), F-VF, on Compex Show covers with Strips of 4, NO #, and May 26, 1989 DesPlaines Post Office unofficial FDCancel, official site was Rosemont, IL	---
249	2127AB	(2), SAME as above but strips of 5, NO #, F-VF	---
250	2258	13c Police W., Pair, NO#, on postcard with FDC, VF	---
251	2258	(2) large postcards equal to size 10 cover with pair, NO # and FDC with front of card Cabbage Patch Kids Topical, VF	---
252	2281	25c Bee, (3), Diff. cacheted FDC, 1 has PS-2, #1 + extra single, the other two covers have singles with NO #, all are VF	---
253	2518	F Flower, PS-1, #1211, F-VF, tied to size 6 white cover by Traverse City, MI 21 Jan 1992 BMC, # covered by cancel	---
254	3055	20c Pheasant, (2), PS-1, #1111 & 2222, VF, on Family Dental Care Post Cards, 1 is tied 1 is not	---

255	1904a	10.9c Hansom PC, PS-1, used #4, VF, 1 nibbed perf @R	---
256	2902	5c Butte, Label from roll of 10,000 USPS item #7934A 1995, XF	---
257	2906	10c Auto, Label from roll of 10,000 USPS item #7937A 1995, XF	---
258	2906	SAME	---

THE END

BIDDING INCREMENTS

\$0.25 to \$4.75 = .25
 \$5.00 to \$9.50 = .50
 \$10.00 to \$49.00 = 1.00
 \$50.00 to \$97.50 = 2.50
 \$100.00 to \$495.00 = 5.00
 \$500.00 and over = 10.00

BIDDERS PLEASE READ

- 1) Number in () indicates the number of items in the lot or the number of items within a subset in that lot.
- 2) Lots with --- in the Min Bid column have an opening bid of .25c since this is the lowest bidding increment, all other lots have a Minimum bid listed and no bids below those MINS. will be excepted!
- 3) For precancelled strips if there is a GAP it is listed, no listing NO GAP!
- 4) In case of a tie bid, the earliest post mark or email date will win.
- 5) All winning bids will be at one advance over the second highest bidder, but if you are bidding on a --- lot and you are the only bidder your bid wins as there is no second highest bidder.
- 6) R = right, L = left, BMC = black machine cancel, PMC = purple machine cancel HVY = heavy, FDC = first day cover or cancel.
- 7) I will not except phone bids, only mail and email allowed.
- 8) ALL bids must be in the auction directors hand by the closing date and notpostmarked on that date!
- 9) If you are mailing bids and have an email address please include it on your bid sheet. And if you are placing bids via email it will be included automatically.
- 10) Bids not conforming to the bidding increments will be lowered to that level.
- 11) Bids with a (+) after them will be used to increase them by one increment only to help break a tie bid.
- 12) BUY BIDS will be excepted, but realize that only one buy bid can win a lot and that will be the first one, and at only one advance over the second highest bidder.
- 13) If you are on the net and would like to see a scan of a lot please email me at PNC3auctions@AOL.com
- 14) If you need to call to ask a question, but NOT to place a bid please call after 7 PM Chicago time at (773) 622 0663.

I would like to thank all the members who have donated lots to the club for auction. Please bid on these since all proceeds go direct to the club and help to keep the dues down for you and all members.

Please remember to bid early so you can win those lots that you really need. And if your email is in my files I will notify you of your winning total and send an invoice along with your lots once your payment has been received.

JOE SEDIVY
Auction Director
Phone (773)622-0663
Email PNC3auctions@AOL.com

OFFICIAL BID SHEET

- 1] Number in () indicates the number of items in the lot.
- 2] Lots with --- have no minimum bids, ALL OTHERS DO!!
- 3] For precancelled strips if there is a gap it is listed.
- 4] In case of tie bid, the earliest post mark wins.
- 5] All winning bids are one advance over the second high bid.
- 6] Bids not conforming to the bidding increments will be reduced to next level.
- 7] All bids MUST meet minimum opening bid!!!
- 8] R=right, L=left, BMC= black machine cancel, PMC= purple machine cancel, BHC= black hand cancel, HVY= heavy.
- 9] NO PHONE BIDS ACCEPTED!!!
- 10] All bid must be in the auction directors hands by closing date.
- 11] If you bid please be ready to pay your bill within 5 days of your receipt of the invoice. Every auction I have held for the club there has been at least one member who fails at this and that drags the auction closing out sometimes an extra month. Any member from this auction forward who does not comply with this rule will be denied this club privilege of submitting lots and bidding in the club auctions.
- 12] Lots found to be mis-described must be returned within 5 days, or they are yours. Please phone or E-mail first.
(jnjsed717@aol.com)

BIDDING INCREMENTS

\$.25---	4.75---	\$.25			
5.00----	9.50---	.50			
10.00----	49.00---	1.00			
50.00----	97.50---	2.50			
100.00----	495.00---	5.00			
500.00 +	-----	10.00			

The closing date for this auction is March 24, 2001

NAME _____ PNC3 # _____

Home Address _____ Home Phone() _____

City _____ ST _____ ZIP _____

SIGNATURE _____
(ALL SHEETS MUST BE SIGNED)

Your e-mail address _____

Please enter the following bids for me in this mail auction.

LOT#	BID	LOT#	BID	LOT#	BID	LOT#	BID	LOT#	BID	LOT#	BID	LOT#	BID
_____	_____	_____	_____	_____	_____	_____	_____	_____	_____	_____	_____	_____	_____
_____	_____	_____	_____	_____	_____	_____	_____	_____	_____	_____	_____	_____	_____
_____	_____	_____	_____	_____	_____	_____	_____	_____	_____	_____	_____	_____	_____

PLEASE CHECK YOUR BIDS CAREFULLY!

Please limit my purchase to \$ _____. Limits under \$50 are respectfully declined. Bid limits will be executed in the order (vertically) that you bid the lots.

Send complete SIGNED bid sheets to:
Joe Sedivy, PNC3 Auctioneer, P.O. Box 410602, Chicago, IL 60641
E-mail PNC3auctions@aol.com