



WWW.PNC3.ORG

Coil Line

Journal of the Plate Number Coil Collectors Club – PNC³

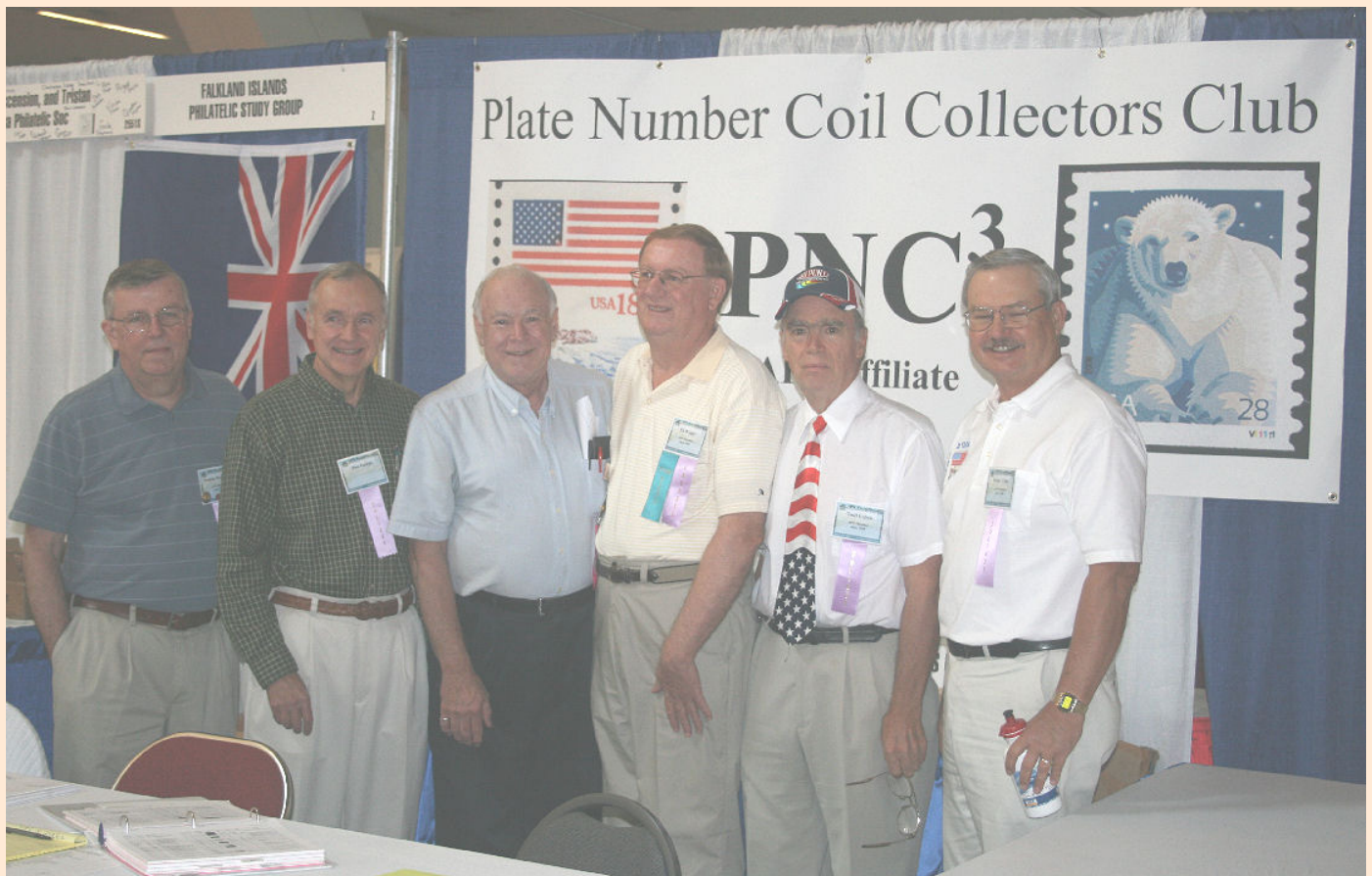
American Philatelic Society Affiliate # 185

Vol. 22, No 10

October 2009

Whole No. 256

Fall Auction bidding ends Thursday, October 22! ... pages 152-156



**Officers in the PNC³ booth at the APS StampShow in Pittsburgh, PA this past August.
(From left) Tom McFarland, Dan Farrar, Ron Maifeld, Ed Wigger,
Todd Uebele, Sr., and Frank Covey in front of the new booth banner.
... for the president's experiences, see page 143**

Coil Line

Journal of the Plate Number Coil Collectors Club

Published by: **PNC³**

ISSN: 1931-5112

Editor: Ronald Blanks
coillineeditor@yahoo.com

Print Edition Mailings: Brian and Cory Snippen
snippenb@comcast.net

Electronic Edition Emails: Frank Covey
ecoilline@macomb.com

Advertising Rates (one-time)

Full Page	\$ 100.00	Eighth Page	\$ 20.00
Half Page	\$ 80.00	Business Card	\$ 20.00
Third Page	\$ 65.00	Back Cover	Add \$ 50.00
Quarter Page	\$ 45.00	Inside Cover	Add \$ 25.00
Sixth Page	\$ 35.00	Color, full page	Add \$ 100.00

(For Color Ads, Electronic Version only, Add \$25.00)

A check or money order, made out to **PNC³**, must accompany camera ready ad. Advertising copy must be submitted by the 1st of the previous month prior to the publication date. Please send all copy to Ronald Blanks, Coil Line Editor, PO Box 9282, Chesapeake, VA 23321.

The Classified Ad rate is six cents a word per issue, with a minimum of \$3.00 per individual ad. (Two 50 word ads per year per member are available at no charge. There is a 10¢ a word charge for words over 50.)

All material, including articles submitted, will be edited and formatted for inclusion in **Coil Line**, and must be received by the 1st of the month prior to publication.

Coil Line reserves the right to edit copy as necessary

Coil Line is published monthly, and as a member benefit is included with paid up membership of \$12.00. Alternately, an electronic full color version of **Coil Line** is available worldwide with PNC³ membership at \$12.00. Foreign dues rates are: North America (Canada and Mexico) \$17.00; Outside North America \$22.00. First Class Mail delivery in the United States is available for an additional \$6.00 yearly. Past issues of **Coil Line** are available at \$2.50 per copy. Quantities are limited.

All material is copyright 2009. All rights reserved. Material in this publication may be copied or reproduced with acknowledgment to **Coil Line**. Opinions expressed by the authors and writers are their own, and do not necessarily reflect those of the editor, publisher, or membership of the Plate Number Coil Collectors Club.

All correspondence, letters to the Editor, and advertising questions, should be sent to **Coil Line**, c/o Ronald Blanks, PO Box 9282, Chesapeake, VA 23321. Phone 757-465-8170; email coillineeditor@yahoo.com.

Mailers

The Incredible Bulk Mailing Co., Tualatin, OR, 97062; email: incrediblebulk@comcast.net. Phone: (503) 810-7825. Mailed from Zip 97208 on or near September 28, 2009.

PNC³ Contacts



Scott #3045 PS5 Plate Number 22222

PNC3 Web Site www.pnc3.org
Ron Maifeld, **Webmaster**
email: ron.maifeld@pnc3.org

Ronald Blanks, **Coil Line Editor**
PO Box 9282
Chesapeake, VA 23321-9282
email: coillineeditor@yahoo.com

Elected Officers

Ron Maifeld, **President**
Post Office Box 54622
Cincinnati, Ohio, 45254-0622
email: ron.maifeld@pnc3.org
513-231-4208

Tom McFarland, **Vice President**
Post Office Box 756
Princeton Jct., NJ, 08550-0756
email: philatomic@verizon.net
609-275-6323

Dan Farrar, **Secretary**
3386 Excalibur Circle NW
Canton, Ohio, 44708-1143
email: farrard2@sssnet.com
330-477-6913

Harvey Wales, **Treasurer**
13 Birmingham Place
Vernon Hills, IL, 60061-2103
email: hwales16@aol.com
847-367-2629

Frank Covey, **Past President**
16 Grandview Drive
Macomb, IL, 61455-9705
email: cquail@macomb.com
309-837-5218

Todd R. Uebele, Sr., **At Large**
1667 Wolf Road
Iron Station, NC, 28080-9418
email: TRU120542@aol.com
704-735-5484

Edward Wigger, **At Large**
1123 Baldwin Street
Mechanicsburg, PA, 17055-3935
717-697-0255

President's Message

FROM THE PRESIDENT . . .

PNC³ at the Pittsburgh APS Show

As I promised last month, here is a report on PNC³ activities at the APS StampShow in Pittsburgh held this past August.

Secretary Dan Farrar and I shared a room on Wednesday night at the Renaissance Hotel in downtown Pittsburgh. This was really convenient to the convention center and two blocks away from PNC Park, where we went to watch the Pirates lose to the Diamondbacks. It is a great park to watch a game. Dan and I spent some quality time together and it was nice getting to know him better.

For the rest of the week, I shared the "Presidential Suite" at the Embassy Suites Hotel near the "airport" with "At Large" officer Todd Uebele and several other collectors from the Charlotte, NC area. I got lost on the way to the hotel. How was I to know there were two airports in Pittsburgh? The suite was a little disappointing, but the included full breakfast and the complimentary manager's reception each night more than made up for it. The cost of the suite, split five ways, was very, very reasonable. We were only twenty minutes from downtown and it was an easy commute to the show.

The show venue was large and more than adequate for our needs. Parking at the convention center was only \$10.00 a day. On the whole, parking around the center was relatively inexpensive. PNC³ again had a corner booth which served our needs well. The booth was well stocked with back issues of *Coil Line* and Catalog items which sold well.

We had quite a few members stop by the booth to chat. Those who signed the attendance sheet included: Frank Covey, Dan Farrar, Ron Maifeld, Joe Lenahan, Fred Lewis, Ken Grant, Tom McFarland, Robert Thompson, David Kidney, Doug Rotz, Frank Sandor, Paul Kolva, Ed Wigger, Steve Unkrich, Richard Beecher, Tony Bruno, James Kloetzel, Todd Uebele, Sr., Joanne Lenz, Dennis

Sadowski, Tom Kensey, Jay Bigalke, Brian Engler, Walt Figel, James Halpin, Jerry Grove, Ken Martin, Tom Trimpey, Janet Gillis, Bill Dogson, Wayne Youngblood, Mary Goldblatt, Mike Lampson, J. Ronald Edwards and Wade Saadi.

Dealer members Dave Cobb and Jim Bardo had booths at the show.

We signed up seven new members at the show: Thomas Tilles, Joseph Matt, John Zwyer, TG Rehkop, Mary Goldblatt, Gary Eschelbach and Robert Stokes. Robert had been a member previously and rejoined. TG Rehkop signed up as the first three year electronic member.

Many, many thanks to all who staffed the booth during the run of the show, especially Tom McFarland and his wife, Frank Covey and his wife, Ed Wigger, Todd Uebele, Sr., Dan Farrar, and a couple of others whom I did not write down. If those individuals would let me know, I'll acknowledge you next month.

The U. S. Postal Service booth was well stocked with coils and we had a list of them at the booth. Frank Covey again took the initiative and got the list together and the Postal Service had it available at their booth, in addition to copies that we had available at our booth.

There were only two Plate Number Coil exhibits on display at the show and they were the work of Robert E. Thompson. Robert won a Vermeil and the American Philatelic Society Post 1980 Medal of Excellence and the Plate Number Coil Collectors Club Achievement Award with his exhibit on the "25¢ Honeybee - From Design to Postal Usage and More." Robert also won a Silver for his exhibit on "Plate Number Coils - Reporting the Rarities."

As has been a tradition in the past, we dined as a group on Friday evening. This year we went to the Grand Concourse, which is a restored "grand" Railroad Station complete with stained glass windows and balconies. The cuisine and the ambiance were superb. A good time was had by everyone.

All in all, it was another good show for the club. See you next year in Richmond, Virginia.

– Ron Maifeld

Regional Meetings

Want to Sponsor a Regional Meeting?

Contact Tony Bruno for suggestions. He can put you in contact with others who have taken on the task. Several members have made it a regular habit of promoting meetings in their area.

Regional Meeting Chairman

Tony Bruno, PO Box 624, East Lyme, CT
06333-0624; email, tbbec@aol.com.

There is no charge for announcements in this column. Please submit to Editor three months prior to the meeting date. Thank you.

Upcoming Regional Meetings

CHICAGOPEX November 21

A regional meeting of PNC³ is scheduled at CHICAGOPEX Saturday, November 21 from 11 a.m. to Noon in the Woodfield III room. The meeting will be co-chaired by Andy Jakes and Harvey Wales. CHICAGOPEX hours are from 10 a.m. to 6 p.m. Friday and Saturday Nov. 20-21, and 10 a.m. to 4 p.m. Sunday, Nov. 22.

Attendance at this regional meeting has been good in the past. We hope more PNCers will join us this year for conversation, new finds, exchanges, and door prizes. For more information, contact Andy Jakes at pnc treasurer@aol.com or (847) 543-4487.

Cleveland, OH March 7-9, 2010

You are invited to make plans to attend the PNC³ Regional meeting during the 121st "March Party", sponsored by the Garfield-Perry Stamp Club, which will be held March 19-21, 2010 at the Masonic Auditorium in Cleveland, Ohio.

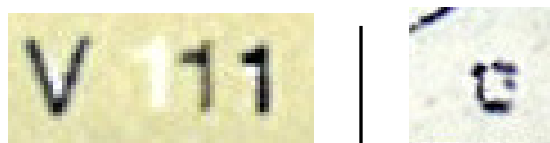
(Date, time, room number and further information will be announced at a later date.) The meeting will be hosted by Frank Nemeth and officers of Garfield-Perry. This will be a great time to socialize with fellow PNC³ers in Cleveland, "The best location in the Nation."

StampShow 2009 Finds

by Frank Covey



The only known plate number on the non-denominated (41¢) Flag on Pole from Avery (PNC-ID 2007-4) is #V1111. On the stamp above, the blue flag field is shifted left – likewise the blue "1" in the plate number, printing the blue "1" right on top of the red "1" (enlarged below, left). Joe Lenahan of Wilkes Barre, PA found this in a lot of 300 PNCs purchased on eBay in 2009.



The joint line pair (below) is also from Joe Lenahan. He found it in a five-pound (2.3 kg.) mix acquired on eBay in 2008. At first glance, the plate number looks like the letter "U" or perhaps it's "13" (enlarged above, right). Since the 1¢ Omnibus (PNC-ID 1983-5) had only six plate numbers, this is most likely a PNC #3 with extra ink blobs at left and bottom.



Readers' Letters

(This 32¢ Flag over Porch #78777 die-cut 11x10, altered at lower left to appear as the rare 10x10, was shown in last month's issue.)



I spotted this fake on eBay as soon as it went up and contacted the seller, not eBay. I told him that the stamp was doctored. He wrote back that he had the stamp for a while and that he soaked it off himself. As soon as I notified him, however, he removed the stamp from the auction. eBay was never notified. – *Milt Keiles #1709*

[Several PNC³ members have commented near the time of this issue's deadline on related 32¢ FOP PNCs. After further research, a non-obvious fake and a suspicious item that could be genuine will be reported in an upcoming issue. – Editor]

Recently I purchased several rolls of 44¢ Flags with plate number V1111 and in the middle of a roll, I discovered the following: The unusual perfs on the top [*see closeup below*] – not quite anything I can remember seeing before. – *Carl Moore, Jr. #1856*

[Editor's note: Tracing the stamp's die cut from the upper left corner tip through the first full peak, one can see the



left-side outline of a bell shape. The printed web was slightly misaligned with the slitter that separates the stamp rows into strips for coiling. These “bells” are but one of several die-cut shapes seen among Avery issues that Coil Line has shown in the past, as misalignments and other finishing imperfections occur. The PNC³ catalog committee offers “Avery Dennison Die Cut Varieties” to explain these shapes; order forms are in the March and April issues of *Coil Line*. For an analysis of stamp finishing done by another supplier, see Doug Iams' article on page 147.]



Wanted-For Exhibits The Birds & The Bees



Scott 3044 1¢ Kestrel 1111 BYCM
(Black, Yellow, Cyan & Magenta)

With or without plate number - On or off cover - Mint or used.
The more they are miscut up or down, the better.

Scott 2281 25¢ Honeybee

With or without plate number - On or off cover - Mint or used.
Longer strips, especially from the C press, wanted.

* Contact Robert E. Thompson at *
(713) 419-1926 or rthompson@pncvarieties.com

Editor's Message

FROM THE EDITOR . . .

The pictures in last month's issue taken under ultraviolet light didn't turn out well in the printed edition, and we apologize. Fortunately they weren't intended to reveal anything more than ordinary differences described in the text, but it was still frustrating to see mostly black boxes. We will strive to better evaluate future pictures for use.

In the last two issues, I asked readers who received

a July large-envelope mailing from the Disabled American Veterans to report what various coils were used for their mailings. Some reported reply envelopes enclosed with postage affixed using six 4¢ Chair and four 5¢ Toileware coils (totaling the first-class rate). Last month I wrote, "With postage rates likely to rise next year, the DAV will soon need to use higher-valued stamps to fit them all on the reply envelope." Evidently the DAV has now laid the groundwork. Readers alerted me to the latest mailing, using a reply envelope as shown in part below. As rates rise, the 1¢ coils can be replaced. — Ron Blanks



(Cover courtesy of Peter Hoffman)

Coil Line

PO Box 9282, Chesapeake, VA 23321 Phone: 757-465-8170
E-mail coillineeditor@yahoo.com Web Site www.pnc3.org

The Journal of the Plate Number Coil Collectors Club

Editor

Ronald Blanks

Associate Editor (print version)

Todd R. Uebele, Sr.

Associate Editor (electronic version)

Ron Maifeld

Senior Consultant

Gene Trinks

Advertising

Ron J. Kramer

Proof Readers

Ron Archer

Joe Chinnici

John Himes

Subscriptions

Dan Farrar

Distribution

(bulk mailing)

Brian Snippen

Cory Snippen

Distribution

(electronic)

Frank Covey

Staff Writers

Ron Archer

Frank Covey

Doug Iams

Gene Trinks

Rob Washburn

Contributing Writers

Dan Kauffman

Alan Thomson

Graphics

Ron Maifeld

Todd R. Uebele, Sr.

Cartoonists

Thomas Babb

Dan Kauffman

Auctions

Joe Sedivy

Printing

Tonia Holowetzki

Webmaster

Ron Maifeld

Stamp Processing at Unique Binders by Doug Iams

In the July 6, 2009 issue of *Linn's Stamp News*, Jay Bigalke wrote about a visit to the Unique Binders division of Sennett Security Products (SSP). There, large printed web rolls of stamps are finished into the final product. In the case of coil stamps, the finishing includes everything from either die cutting or perforating to packaging.

Accompanying the article was a picture of a portion of a web of the water-activated gum (5¢) Sea Coast coil after perforating, but before it was cut into rows for individual rolls.

One thing that stood out in the picture was that there is a central gutter running along the length of the web, separating the 22 rows into two groups of 11 rows. The reason for this gutter, which appears to be about two inches wide, was not revealed. The photo, taken with a flash while the web was moving, was focused on the portion of the web nearest the camera, so the gutter is out of focus and thus it is not possible to say whether there are any perforations in the gutter or not, but in the gutter there does appear to be a registration marking.

Another thing that stood out was that Unique Binders is still adding a row of perforated holes along the edge of the web below the bottom row of stamps (and presumably another one above the top row). According to the article, "This helps to give the paper better tension when it goes through the perforator", an explanation that matches what I was told years ago ("for stabilization").

What has changed is the location of these extra perf holes. On early coil issues from Stamp Venturers (the precursor to SSP), collectors occasionally found stamps showing parts of these perf holes at the top or bottom of the stamp ([5¢] *Mountain* on-paper example shown below).

The *Linn's* picture shows the holes have been moved further away, so that they are now about a half-inch below the bottom row's stamp designs. As a

result, a very large miscut would be required for them to be found. This explains why we don't see them anymore.

Two parallel lines running along the extra (horizontal) perf holes are probably used as vertical registration guides for the perforating process. Since the columns of regular perf holes extend about 0.2 inches below the bottom row's stamp designs, the vertical registration does not need to be perfectly precise.

We know that Unique Binders conducts perforating in three sections across the web (using a grinding process called skiving). Back in 2000, I spoke to personnel from SSP and Unique Binders and was told they perforate the middle section at one station, then the outer two sections at a second station.

Since then, it has been suggested that they do the perforating at three different stations. The exact sequence is not important here. What is important is that they do it in sections. The perforating sections overlap slightly where they meet. Any misalignment between stations, or change in tension that causes an increase or decrease in the web slack between the stations, produces the snowman-shaped perf holes in the overlap area we find from time to time.

Examples of SSP coils with defective die cuts have appeared at various times in *Coil Line* (most recently in the July issue). These defective die cuts have variously been called "misaligned", "broken", and even "double". Some of the most extreme examples found by PNC³ member Bob Murrin are shown below.

Some suggest the cause is a defective or poorly machined mat. If that were the case, we would find these in large batches (an entire run cut with such a mat would have the defect). Also, the defect would have to be constant. But I have been told about rolls of a *Flags of our Nation* set with a misalignment that was not consistent. *(please see page 150)*



▲
Close-up of some of the holes along the bottom of the (5¢) *Mountain* stamp at left

▶
37¢ *Flag* (2004) #S1111 misaligned at top



Catalog Corner

by Frank Covey



The 44¢ self-adhesive Star Flag from Ashton Potter went on sale nationwide on May 8, 2009 in rolls of 100.

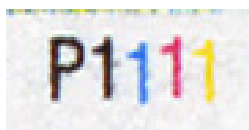
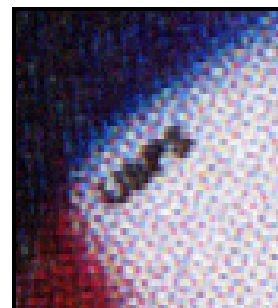
The P1111 plate number, seen in the lower right corner of the example at left, repeats every 31 stamps along the roll.

Four wrapper styles are known to-date. These are identified by the different images under the words “Coil of 100”. As shown at the bottom of the page, these are named the “star”, the “empty rectangle”, the “bar”, and the “dot”. Note the different intensities of printing on the wrappers. Some are bright blue and some a “faded” blue.

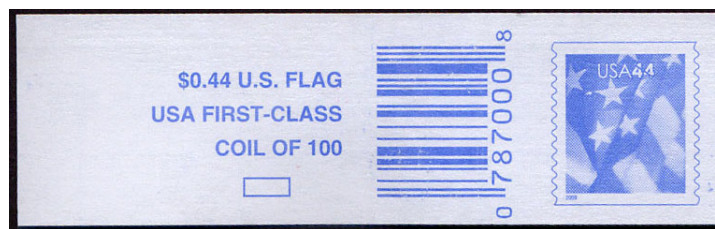
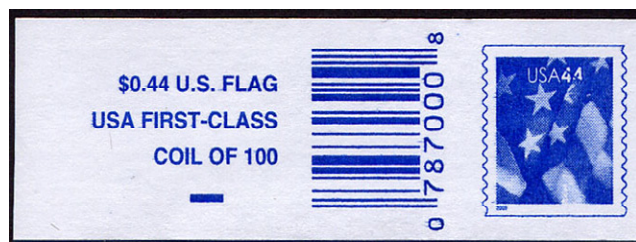
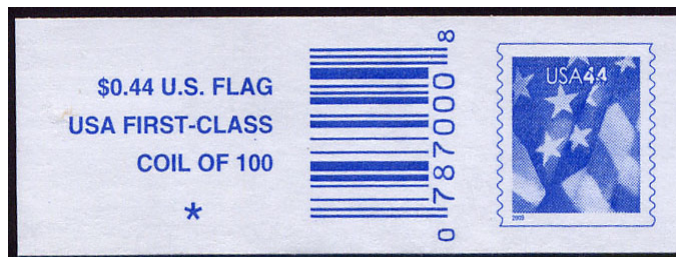
A microprinted “USPS” can be seen as a dark speck in the leftmost corner of the white stripe that reaches the bottom of the stamp.

**44¢ Star Flag (AP) (SA)
Plate P1111
PNC ID 2009-6**

**“USPS”
Microprinting**



← **P1111
Plate Number**



Current Plate Numbers, Roll Sizes, Tagging & Die Cuts

=== KEY ===

Roll Size: E = 50, A = 100, B = 500, C = 3000, D = 10,000

* **NEW NUMBER OR VARIETY**

*** **DATA IS TENTATIVE**

[xx] - plate number interval

BK - Block Tag

EP - Embedded Phosphor

SP-S - Surface Phosphor, Smooth appearance

SP-U - Surface Phosphor, Uneven or grainy appearance

OA - Overall Tag

un - untagged

Water-Activated (WA) if shaded; otherwise, Self-Adhesive (SA).

Plate number intervals are shown in brackets [] following the plate number(s) and roll size(s), followed by die-cut types on self-adhesive stamps:

PV = Peak/Valley VP = Valley/Peak

PP = Peak/Peak S = Serpentine Die Cuts with no transition.

Tagging is listed within (). Note some #'s have varieties.

PRINTER PLATE NUMBER PREFIX LETTERS

A - American Bank Note

P - Ashton Potter

B - Banknote Corp. of America

S - Sennett Security Prod.

G - Guilford Gravure

V - Avery-Dennison

M - 3M

None - BEP

1¢ LAMP 2003 (un)

#S11111 C [14]

1¢ LAMP 2008 (un)

#S11111 C, D [31]

3¢ STAR (un, SP-S)

#S111 D [14]

3¢ SILVER COFFEE POT (un)

#S1111 D [14]

4¢ CHAIR (un)

#S1111 D [14]

5¢ TOLEWARE (un)

#S1111111 D [14]

10¢ CLOCK 2006 (un)

#S1111 D [14]

10¢ CLOCK 2008 (SP-S)

#S1111 D [31]

17¢ SHEEP (SP-U), SP-S

S11111111 A [31] VP

26¢ PANTHER (SP-S, SP-U)

S1111 A [31] VP

27¢ TROPICAL FRUIT (SP-S)

#V1111111 A [40] VP, PV

28¢ POLAR BEAR (SP-S)

#V111111 A [20] VP, PV

44¢ FLAG (SP-S)

#V1111 A [20] VP, PV

44¢ FLAG (SP-S)

#S111 A [31] VP

44¢ FLAG (SP-S)

#P1111 A [31] VP

44¢ FLAG (SP-S)

#S111 C [31]

44¢ FLAG (OA)

Rounded Corners

#V1111 C, D [16] VP

44¢ FLAGS OF OUR NATION (SP-S)

#S111111111 E [10] PV (Set 3)

(5¢) SEA COAST

#B111 D [20] (SP-S) VP
 #P1111 D [22] (un) S
 #P2222 C, D [27] (un) S
 #P2222 D [27] (un, SP-S) S
 #P3333 D [27] (un) S
 #P4444 D [27] (un) S
 #P5555 D [27] (un) S
 #P6666 D [27] (un) S
 #P7777 C, D [27] (un) S
 #P8888 D [27] (un) S
 #P9999 C, D [27] (un) S
 #S1111 D [20] (un) S

(5¢) SEA COAST (un)

#B111 B, D [10]
 #S1111 C (Lum. Ink) [14]
 #S1111 D (Lum. Ink) [14]
 #S11111 B [31]

42¢ FLAGS 24/7 (SP-S)

#P1111 A [16] VP

42¢ FLAGS 24/7 (SP-S)

#S1111 A [16] PV

42¢ FLAGS 24/7 (SP-S)

#V1111 A [20] VP, PV
 #V2222 A [20] VP, PV

42¢ FLAGS 24/7 (SP-S)

Rounded Corners

#V1111 C, D [8] VP
 #V2222 C, D [8] VP

42¢ FLAGS 24/7 (SP-S)

#S1111111 C [12/16 alternating]

42¢ FLAGS OF OUR NATION (SP-S)

#S111111111 E [10] PV (Set 1)
 #S111111111 E [10] PV (Set 2)

(10¢) ATLAS (un)

#B1111 D [20] VP, PV
 #V11111 D [10] VP
 #V11222 D [10] VP
 #V12111 D [10] VP
 #V12222 C, D [10] VP
 #V13222 ? [10] VP
 #V21111 D [10] VP
 #V21113 ? [10] VP
 #V21211 C, D [10] VP
 #V22111 D [10] VP
 #V22112 D [10] VP
 #V22211 C [10] VP
 #V22222 D [10] VP
 #V23113 D [10] VP
 #V32332 D [10] VP
 #V33332 D [10] VP
 #V33333 D [10] VP

? = known used only

(10¢) LION (un)

#S11111 B, C [14]

(10¢) BANNER (un)

#S111 D [27] PP
 #S111 B [31]
 #V111 C, D [10] VP
 #V222 C, D [10] VP

(25¢) DINER (un)

#S11111 D [14]

(25¢) EAGLE (SA) (un)

#S1111111 D (2003) [20] S
 #S2222222 D [20] S
 #S3333333 C, D [20] S
 #S1111111 C (2005) [20] S

(25¢) EAGLE (un)

#S1111111 C [10]

Note: There are no new coils to report this month. The first two columns have been rearranged in value order.

The 'KEY' box was changed Dec. 2008 to update the description of phosphor tagged stamps agreed-upon at the tagging meeting at the APS StampShow in Hartford Aug '08:

EP for stamps with Embedded Phosphor, and **SP** for Surface Phosphor stamps. SP stamps have an additional qualifier letter: '-U' for Uneven and/or Grainy, or '-S' for Smooth appearance.

Ashton Potter's SA Sea Coast P2222 was die cut with two different mats. One is serpentine cut on all four sides; the other has serpentine cuts only on the sides.

In printing the Sea Coast with cylinders P2222 through P9999, AP changed the cylinder size from that used to print P1111. Thus, the plate number intervals changed from 22 to 27. P3333 through P9999 have a small date and color order of BCMY.

Classified Ads

PNC USED SINGLES, used strips, MNH PS/5s. Great prices! Guaranteed quality! No hassles! Please send large SASE for details to John Himes, PO Box 453 Cypress, CA 90630-0453, or please visit my web site at <http://www.angelfire.com/ca5/HimesPNCs> or email me at johnwhimes@yahoo.com. Member 957

NEW E-BOOK, "Field Guide to Postal Uses of the Americana Series", 304 standard pages, color throughout, 185 figures, 19 indepth stories, \$18 postpaid (USA) on CD. Inquire for table contents, online demo, print options. Ron Blanks, PO Box 9282, Chesapeake VA 23321. rblanks@yahoo.com Member 2119

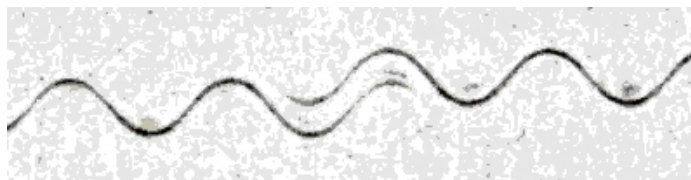
CLASSIFIED AD rates are 6¢ per word, with a minimum cost of \$3.00 per insertion.

PNC³ members are entitled to two free 50-word ads per year. (There is a 10¢ charge for each word over 50 with free ads.) Contact the editor to place an ad.

Display Advertising Rates

PNC³ Coil Line

- Full Page \$ 100.00
 - Half Page \$ 80.00
 - Third Page \$ 65.00
 - Quarter Page \$ 45.00
 - Sixth Page \$ 35.00
 - Eighth Page \$ 20.00
 - Back Cover Add \$ 50.00
 - Inside Cover Add \$ 25.00
 - Color Ad Add \$ 100.00
 - Color Ad - Electronic Version Add \$ 25.00
- (Discounts available for multiple insertions.)



Misaligned die cut area (enlarged, rotated 90°) from an SSP 37¢ Flag S2222 PS5. Note how two sections offset each other with a small middle overlap.

Unique Binders

(from page 147)



**37¢ Flag
(2003) #S4444
& (39¢) Flag
#S1111
misaligned at
◀ bottom ▶**



Since Unique Binders perforates in sections, it is reasonable to guess they also die-cut in sections. If so, any misalignment between stations or change in tension would make the type of misaligned die cuts we see, but according to the *Linn's* story, this is not the case. It states, "the large uncut rolls of stamps are first die cut using a single mat".

With the article is a picture of a nine-row portion of a die-cutting mat used for the (10¢) Banner coil. Looking closely at it, you can see vague images of the stamps *on the mat*.

What are images of stamps doing on a die-cutting mat? My theory is that if the serpentine ridges rise above the mat's face by a little less than the thickness of the stamp paper, then the face of the mat contacts the stamps. Friction over thousands of impressions picks up the images (since the die cutting compresses the paper instead of actually cutting it, the ridges do not need to be as thick as the paper to apply die cuts). This mat design implies the pressure does not need to be set precisely. It needs only to be set high enough to cause the ridges to fully die-cut the stamp paper layer. Any overpressure wouldn't cause the liner to be die-cut, as contact between stamp paper and the face of the mat next to the ridges prevent the ridges from cutting any deeper.

Returning to misaligned die cuts, *Linn's* states: "Such shifts likely occurred at the beginning or end of the run, when the tension on the stamp paper as it feeds through two drums during the die-cutting process is not perfectly adjusted. If the tension on the pane is off slightly, it can lead to a misaligned die cut."

Since the die-cutting mat is on a cylinder and the web is backed by another drum, the mat should only contact the web in a straight line. A single mat should die-cut the entire column across the web's width all at once. Thus it is hard to understand how a misadjusted tension could cause a shift and overlap within a column (like the example shown at left) when only a single mat cuts the whole column, but somehow it must.

Membership Update

Names of applicants are published for members to review. Any member who questions the suitability of a prospective member should contact the chairperson of the Membership Committee, Robert E Thompson, 12431 Golden Thistle, Houston, TX 77058-1225 with the objection.

New Applicants

Thomas Tilles (2141)
14 Sandhill Rd
Bethel, CT 06801-1025
(203) 743-3380 (Day & Evening)
bktradingcom@aol.com

Joseph J Matt (2142)
4438 Indigo Ln
Harwood, MD 20776
(410) 867-4688 (day & evening)
Wolverine72z@juno.com

John Zwyer (2143)
3839 Bellevue Rd
Toledo, OH 43613
(419) 474-3984
jzwyer@sbcglobal.net

T G Rehkop (2144)
PO Box 1013
Fenton, MO 63026
(314) 747-1964 (day)
(636) 349-0405 (evening)
tgrehkop@marz.com

Mary M Goldblatt (2145)
PO Box 99594
Pittsburgh, PA 15233
(412) 421-9023 (day)
(412) 421-9022 (evening)
goldcoyne@msn.com

Gary Eschelbach (2146)
548 Conestoga Dr
Columbus, OH 43213
(614) 866-9684 (day & evening)
gesch@wowway.com

Robert C Stokes (2147)
260 Vineland St
Pittsburgh, PA 15234
(412) 882-7092 (day)
(412) 760-3574 (evening)
Stokes.robert@verizon.net

Reinstated

Wayne Youngblood (2090)

Previous Membership Count	796
New Members	7
Reinstated	1
New Membership Count	804

Mailing List Available

Rental of the club mailing list is available upon request. A one-time usage fee of \$50.00 includes preprinted address labels. Contact Dan Farrar, Secretary by email: farrard2@sssnet.com

Address Changes

Donald Eastman (3)
122 Cedar Pond Dr
Milan, NH 03588
(603) 449-3426 (day and evening)

Frank Nemeth (1323)
franknemeth@ymail.com

Robert Murrin (1369)
bmurrin@yahoo.com



Address Changing?



Change of Address forms and membership applications are available from Daniel Farrar, Secretary, 3386 Excalibur Cir NW, Canton OH 44708-1143. Email: farrard2@sssnet.com. Both forms are also on our website at: www.pnc3.org.

Terms & Codes Used

1. Numbers in () indicate **total** number of items in lot; [] = number of items within a *subset* of the lot.
2. All lots are listed with a minimum starting bid and bids must conform!
3. For precancel strips: If there is a gap, it is listed; no listing = **NO GAP!**
4. In case of a tie bid, the **earliest** postmark or email date wins.
5. All winning bids will be at one bidding increment over the second high bidder.
6. I will not accept phone bids; bids must be only via mail and email! (**Please find Bid Sheet on wrapper for mail use.**)
7. R = right, L = left, HVY = heavy, Lt = light, BMC = black machine cancel, PMC = purple machine cancel, FDC = first day cover or cancel, S-# = plain strip, P = position, RHC = red hand cancel, @ = at.
8. ALL Bids must be in the auction director's hands by the closing

- date **Thursday, October 22, 2009** and not just postmarked by then!
9. Bids not conforming to the bidding increments will be lowered according to the proper increment.
10. "Buy Bids" will be accepted, but realize that only one Buy Bid can be honored and that is the *first* one, and at only one advance over second high bidder.
11. Bids with a (+) after them can be used to break a tie only if needed.
12. Please, when placing a bid over the Internet, **DO NOT** use a spreadsheet or other such program as I have problems opening them. Just place in a standard email form. Once placed, please do not mail a confirming copy. The email address to send your bids to is PNC3auctions@aol.com. No phone bids please!
13. If you need to call me with questions on a lot but **NOT** to place a bid, please call after 7 p.m. Chicago time as I still work a full-time job. (773) 622-0663.

BIDDING INCREMENTS

\$1.00 TO \$4.75 = .25
\$5.00 TO \$9.50 = .50
\$10.00 TO \$49.00 = 1.00
\$50.00 TO \$97.50 = 2.50
\$100.00 TO \$495.00 = 5.00
\$500.00 AND OVER = \$10.00

"I would like to thank all the members that have donated lots for this auction and future ones, since I always seem to have a backlog of them from auction to auction. Please bid on these as they help keep your dues as low as they are. Good luck in this auction both as sellers and bidders."

--Joe Sedivy,
 Auction Director

Email: PNC3auctions@aol.com

*** Bid Sheet is on inside back cover of wrapper.***

Lot #	Item	Description	Min. Bid	Lot #	Item	Description	Min. Bid
A.				B.			
----- Mint Plate # Pairs -----				----- Mint Plate # Strips of 3 -----			
001	722A	3¢ Washington PC line pair, Atlanta GA, VF, line VF	\$50.00	016	1891	18¢ Flag, #1, S	\$10.00
002	1056A	2-1/2¢ Bunker Hill PC, Louisville KY, F-VF, thin @ top center	9.00	017	1891	#2, VF	5.00
003	1229A	5¢ Washington PC, St Louis MO, F-VF	9.00	018	1891	#2, VF bit high	3.00
004	1299A	1¢ Jefferson PC, Columbus Ohio, VF	12.00	019	1891	#2, XF	6.00
005	1297A	3¢ Parkman PC, (3) pairs Plain bars, Car. Rt. Sort, Rochester NY, VF	6.00	020	1895a	20¢ Flag, #4, XF, has light diagonal bend across all stamps only seen from back	2.00
006	1303A	4¢ Lincoln PC, Seattle Wash, F-VF	15.00	021	1895a	#4, F-VF bit high	2.00
007	1305A	6¢ Roosevelt PC, F-VF, Chicago IL	25.00	022	1895	20¢ Flag, (7), #1,2,3,5,11,13,14, F-XF	8.00
008	1401A	6¢ Ike PC, gap pair, LH, VF, Chicago IL	25.00	023	1895a	20¢ Flag, (6), #4,6,8,9,10,12, F-VF	10.00
009	1402A	8¢ Ike PC, VF, Long Beach Calif.	4.00	024	1895e	20¢ Flag PC, #14, VF	24.00
010	1520A	10¢ Memorial PC, gap pair, XF, Atlanta GA	8.00	025	1900	5.2¢ Sleigh, F, #2, Just clears @R, line F-VF	1.00
011	1616A	9¢ Capital Dome PC, (3) pairs Plain bars, Presort First Class, Pleastvl NY, all VF	6.00	026	1901a	5.9¢ Bike PC, #2, VF, line VF-XF	5.00
012	1617A	10¢ Justice PC, Line pair, XF, line XF, Plain Bars	10.00	027	1903	9.3¢ Mail W. #2, S, line XF	1.75
013	31Pairs	1 ¢-12¢ Americana issue, reg. & PC pairs, F-VF-XF, all diff.	18.00	028	1903	#6, F-VF close @R, line F-VF	25.00
014	1903a	9.3¢ Wagon PC, (2) Pairs, #3&4 XF, lines XF	9.00	029	1904	10.9¢ Hansom Cab, VF, line S	4.00
015	1904a	10.9¢ Hansom PC (2) pairs #1&2 XF, lines XF	9.00	030	1907	18¢ Surrey, (4), #7 F-VF, line VF, #9,12 F-VF, lines F-VF, #10 VF, line S	5.00
				031	1908	20¢ Pumper, #1, F-VF high & R, line F does not touch	75¢
				032	2005	20¢ Consumer, #1, VF, line VF	3.00

Lot #	Item	Description	Min. Bid	Lot #	Item	Description	Min. Bid
B. ----- Mint Plate # Strips of 3 (con't) -----				081	1908	20¢ Pumper, #12, F-VF, line F-VF	\$3.25
033	2005	(2) #1 F-VF, line VF, #2 VF-XF, line S	\$3.00	082	1908	#12, XF, line VF	5.00
034	2005	#3, VF, line XF	5.00	083	1908	#14, XF, line XF	5.00
035	2915A	32¢ FOP, #89899, 10x10 pv/vp, F-VF	180.00	084	1908	(4), #3 & 5, VF-XF, lines S, #4 VF-XF, line XF, #13, VF-XF, line F-VF	4.00
036	O139	D Official, #1, VF	10.00	085	1908	(2), #13 & 16, XF, lines S	5.00
C. ----- Mint Plate # Strips of 4 -----				086	2005	20¢ Consumer #1, F-VF close @R, line F-VF	20.00
037	845A	5¢ Monroe PC, paste-up line strip, L/G, Phila. PA, LH, full gum, VF, line VF	75.00	087	2005	#1, F-VF bit low, line VF-XF	30.00
038	1903	9.3¢ Mail W., #5, XF, line XF	100.00	088	2005	#3, F-VF low, line XF	19.00
039	1903	#4, F-VF just clears @R, line F	75¢	089	2005	#3, VF, line XF	20.00
040	1903	#4, F-VF perfs just touch @R, line F-VF	10.00	090	2005	#3, VF, line XF	35.00
041	1904	10.9¢ Hansom Cab, #2, F-VF low but # clears, line VF	3.00	091	2115	22¢ Flag, #13, XF, tagging block 19x22mm	5.00
042	1904a	10.9¢ Hansom PC, #1 VF, line XF, line gap	7.00	092	2115	#14, S, tagging block 19-1/2x22mm	13.00
043	1907	18¢ Surrey #1, F perfs just clear @L, line VF	75¢	093	2115a	22¢ Flag, #1, XF, tagging block 17x22mm	5.00
044	1907	18¢ Surrey (2), #3 VF, line XF, #4 F-VF, line XF	16.00	094	2115a	#7, XF, tagging block 17x22mm	5.00
045	1908	20¢ Pumper, #6, F-VF bit high, line XF	1.50	095	2124a	4.9¢ Buckboard PC, (2), #3, XF line F-VF, #4, XF, line XF, both line gap	4.00
046	2005	20¢ Consumer (2), #2 VF, line XF, #3 VF, line VF	4.00	096	2124a	#5, VF, line VF, gap 2L	4.00
047	2005	#4, VF, line VF	7.00	097	2231	8.3¢ Ambulance, #1, VF	3.50
D. ----- Mint Plate # Strips of 5 -----				098	2231	#2, XF-S	4.75
048	1891	18¢ Flag, #7, XF	8.00	099	2132b	12¢ Steamer PC, #1, XF	6.00
049	1895a	20¢ Flag, #6, F-VF	100.00	100	(4)	Pushcart, #2133, [2], #1 & 2, #2133a PC, [2], #1 & 2, VF	4.50
050	1895	20¢ Flag, #8, XF	5.00	101	(2)	#2262, 17.5¢ Racing Car, #1, #2135, 17¢ Dog Sled, #2, both F-VF	5.00
051	1899	5¢ Motorcycle, (3), #1-3, F-VF, lines F-VF	75¢	102	2136	25¢ Bread W. (5), #1-5, XF	8.00
052	1901	5.9¢ Bike #3 F perfs just touch @R, line F-VF	2.00	103	2252a	3¢ Conestoga, #5, XF, shiny gum	4.00
053	1901	#3, F-VF high & R, line VF	3.00	104	2255	7.6¢ Carreta, (3), #1-3, VF-XF	4.25
054	1901	#3, F-VF low & R, line VF-XF	4.00	105	2256	8.4¢ Wheel Chair, (3), #1-3, VF-XF	6.00
055	1901	#4, F perfs just touch @R, line F	2.00	106	(4)	#2257b, #2 & 3, #2257c (2), #4 & 5, VF-XF #4 tagging break 1L	9.00
056	1901	#4, F-VF, line VF, perfs bent between 4/5	2.00	107	2262	17.5¢ Racing Car, #1, XF	1.50
057	1901	#4, F-VF, line F-VF, gum problem R stamp	3.00	108	2264	20.5¢ Fire Truck, #1, XF	2.00
058	1901	#4, F-VF low & L, line F-VF	3.00	109	2280a	25¢ Yosemite, #6, VF	3.00
059	1901	(2) #3 & 4, XF, lines XF	10.00	110	2280a	(3), #9-11, F-VF	5.00
060	1901a	5.9¢ Bike PC, #3, F-VF, line VF	15.00	111	2280a	(3), #13-15, XF	8.00
061	1903	9.3¢ Mail W., (2), #1 & 2, XF, lines XF, #2 perfs short T/R but there	10.00	112	2280a	(4), #11,13-15, VF-XF	9.50
062	1903a	9.3¢ Mail W. PC #1, XF, line XF gap 2-¼ L	6.00	113	2452a	5¢ Circus W., #1, VF	1.75
063	1903a	#3, F-VF, line VF, gap ½ R	90.00	114	2452D	5¢ Circus W.,(2), #S2, XF, one with top pink B#02210 @position 4	1.00
064	1903a	#4, VF, line F-VF, gap ½ R	90.00	115	(3)	10¢ Tractor Trailer, #2457 #1, #2458 [2] #11 & 22, all XF	4.50
065	1903a	#4, XF, line XF, gap 2 R	8.00	116	2458	10¢ Tractor Trailer, (2), #11 & 22, S	4.00
066	1904	10.9¢ Hansom Cab, #1, VF, line F-VF	10.00	117	2464	23¢ Lunch W. #3, F-VF	1.25
067	1904	#1, VF, line VF	12.00	118	2466	32¢ Ferryboat, #3, VF, low gloss gum	2.75
068	1904a	10.9¢ Hansom Cab PC, #1, XF, line S	15.00	119	2468	\$1 Plane, VF bit low, smooth tagging	8.00
069	1904a	#2, VF bit low, line VF, line gap	18.00	120	2468b	\$1 Plane, #3, VF-XF, shiny gum	7.00
070	1905	11¢ Caboose, XF	2.00	121	2523a	29¢ Rushmore, #A22211, F-VF	2.00
071	1906	17¢ Auto, #6, S. line S	5.00	122	2525	29¢ Tulip, #S1111, XF-S	1.50
072	1906a	17¢ Auto PC, (2), #6A, XF, line XF, gap 1L, #7A, XF, line XF	10.00	123	(3)	29¢ Tulip, (2) #2525, # S1111 & S2222 also #2526, #S2222, all VF-XF	8.00
073	1907	18¢ Surrey, #1, F-VF close @L, line VF-XF	60.00	124	2529	19¢ Fishing Boat, (4) #A1111, A1112, A1212, A2424, XF	8.00
074	1907	#7, F-VF, line VF	12.00	125	(10)	#2529 & 2529a, #A1111/A7679, (2) of #A7667, VF-XF, so only 9 diff #s	13.00
075	1907	#7, XF, line XF-S	11.00	More lots → → → →			
076	1907	#9, XF, line S	6.00				
077	1907	#11, XF, line XF	6.00				
078	1907	#15, XF, line XF	11.00				
079	1907	#16, XF, line S	11.00				
080	1907	(2), #15 & 16, VF, lines VF-XF	15.00				

Lot #	Item	Description	Min. Bid	Lot #	Item	Description	Min. Bid
D. ----- Mint Plate # Strips of 5 (con't) -----				173	3207A	(5¢) Wetlands, (6), #1111-6666, XF	\$ 3.75
126	2602	10¢ E&S, (7) diff #A11111-A22113, XF-S	\$8.00	174	3228	(10¢) Handlebars, (11), #111-999, XF	9.00
127	2602	(24) diff #s A11111/A99999, VF-XF, key #s missing	20.00	175	3264	(33¢) H Hat, #1111, F-VF	3.00
128	2602	(13) diff #s A1010101010/A1412111111, VF-XF	10.00	176	3264	#3444, F-VF	3.00
129	2602	#A1110101011, XF	5.00	177	3265	(33¢) H Hat, #1111, VF	3.50
130	2602	SAME	7.00	178	3265	#1131, VF	5.50
131	2602	(4) #A1110101010, A1110111010, A1111101010, A1111111010, VF	7.00	179	3281c	33¢ FOC, #1111, F-VF, 2nd S-5 with NO# & top aqua B#2880 position 2	4.00
132	2602	(4) #A1411101010, A1411101011, A1412111110, A1412111111, VF-XF	7.00	180	3281d	33¢ FOC, #9999A, small date, VF	9.00
133	2603	10¢ E&S,(5), #11111, 22221, 22222, 33333, 44444, VF	7.50	181	3453a	(34¢) Liberty, #1111, large date, F-VF	2.75
134	2602	10¢ E&S, (42) complete run of #s few with finger prints on gum, F-VF	150.00	182	3465a	(34¢) Flowers, #B1111, VF-XF	7.50
135	2606	23¢ USA (8) #A1111/A4453, VF-XF all diff	11.00	183	3465a	SAME	6.00
136	2609	29¢ WhiteHouse #11, VF, 1 blind perf top R	1.50	184	3477	34¢ Liberty, #7777, F-VF	5.00
137	2886	(32¢) Black G Flag w/ spaces, #V11111, XF	6.00	185	3550	34¢ UWS Flag, (3), #1111,2222,3333, VF	9.50
138	(2)	#2886 #V11111 VF, #3018 32¢ Angel #B1111 VF	10.00	186	3550	#3333, VF	5.50
139	2888	(25¢) G Flag, #S11111, VF	2.00	187	3550	(3), #1111, 2222, 3333, VF	6.00
140	2890	(32¢) Blue G Flag, #A2223, XF	4.00	188	3617	23¢ Wash. (4), #V13, 24, 45, 46, F-VF, pv/vp	10.00
141	2890	#A2313, XF	5.00	189	3617	(7) #V11, 13, 21, 24, 35, 45, 46, VF, vp/pv	10.00
142	2890	#A3436, F-VF finger prints on gum	2.25	190	3622	(37¢) Flag (2) #1111 & 2222, F-VF	5.00
143	2892	(32¢) Red G Flag, rouletted, #S2222, F-VF	3.00	191	3622	SAME	7.00
144	2892	(2), #S1111 & S2222, XF	6.50	192	3632	37¢ Flag,(11) #5555-6666A, F-VF	24.00
145	2893	(5¢) G Flag, #A21111, XF	1.25	193	3632A	37¢ Flag,(4), #S1111-S4444, VF	8.50
146	(3)	#2888 #S11111, #2893 #A11111,A21111, XF	5.50	194	3633A	37¢ Flag, #B1111, XF	6.50
147	2913	32¢ FOP, #22322, XF-S, 4 faint wiper blade lines across top ½	2.00	195	3633B	37¢ Flag, #P1111, XF	8.00
148	2813	#22322, VF	3.00	196	3829	37¢ Egret, (2), #V3212 & 3222, VF, pv/vp	8.00
149	2913	(2), #22221 & 34333, VF-XF	8.00	197	3829	(4) #V1111,V2111,V3212,V3222, vp/pv, VF	10.00
150	2913	(2), #91161 & 99969, XF	7.50	198	3829A	37¢ Egret, (5), #P11111-P55555, VF	12.00
151	2915	32¢ FOP with spaces, #V11111, VF	6.00	199	4389	28¢ Polar Bear, #V11111, vp/pv, VF	2.25
152	2915A	32¢ FOP, #87898 10x10 pv/vp, F-VF	6.00	200	O139	"D" Official, #1, XF	25.00
153	2915A	#88888, 10x10 pv/vp, VF	3.25	201	CV33	32¢ Variable rate, 32¢ Value, #11, VF-XF, fingerprint on gum	1.50
154	2915A	#88888, 10x10 pv/vp, VF	5.00	E. --- Mint Plate # Strips of 6 or longer ---			
155	2915A	#89878 10x10 pv/vp, VF, light red line from wiper blade	180.00	202	1304A	5¢ Washington PC, S-6, Richmond VA, VF	15.00
156	2915A	#89878 11x10 pp/vv, F-VF	5.50	203	1304A	S-8 line strip Fall Church VA, shiny gum, F-VF close @L, line XF	75.00
157	2915A	#89899 10x10 pv/vp, F-VF	225.00	204	1305CV	\$1.00 ONeil, S-6 line strip, Dull Gum, VF-XF	12.00
158	2915A	#97898, 11x10 pp/vv, XF	7.00	205	1402A	8¢ Ike PC, S-6, Long Beach CA, gap in center, VF-XF	14.00
159	2915A	#99899, 10x10 pv/vp, F-VF	8.00	206	1402A	S-6, line strip w/gap 15/16 L, XF, line XF, Long Beach CA	45.00
160	2915A	#78777A, 10x10 pv/vp, F-VF	9.00	207	1615C	8.4¢ Piano PC, S-8, Jacksonville FL, S, line S	6.00
161	2915A	SAME	7.00	208	1616A	9¢ Dome PC, S-6, Pleasantvl NY, gap in center, VF	15.00
162	2915C	32¢ FOP, #66666, 11x12 vv/pp, F-VF	8.50	209	1903a	9.3¢ Mail W. PC, PS-8, #4, F-VF, line F-VF gap 1-½ R	160.00
163	2915C	SAME but VF centering	10.00	210	1903a	PS-9 #4, VF, line XF, type IIa paper, gap 3L	100.00
164	2915C	SAME	10.00	211	1903a	PS-7, #8, VF bit low, line F-VF, gap 2-1/8 L	160.00
165	2915D	32¢ FOP w/ spaces #11111, 9x10 vv/pp, XF	8.00	212	1904	10.9¢ Hansom PS-6 #1, VF bit high, line XF	12.00
166	3044	1¢ Kestrel, (6) #1111, BYCM, BCYM, YMCB, #2222, #3333, #4444, XF	3.75	213	1904	PS-6, #2, VF bit high, line VF	12.00
167	3054	32¢ Yellow Rose, #2233, VF	3.00	214	1904a	10.9¢ Hansom Cab PC, PS-10, #1, VF, line XF, gap 3R	100.00
168	3054	(2), #3344 & 3444, VF	7.00	215	1904a	PS-10, #2, VF, line XF, gap 3R	100.00
169	3054	#5566, VF-XF	2.50	216	1906a	17¢ Auto PC, PS-11, #5AB, XF, line S, gap 5-1/8R	15.00
170	3054	(3), #6777, 7777, 8888, VF	10.00	217	1906a	PS-10, #6AB, F-VF, line XF, gap 4R	65.00
171	3054	#8888, F-VF incision style D	3.00	218	1906a	PS-11, #7AB, VF, line S, gap 5-1/8R	15.00
172	3133	32C FOP linerless, #M11111, XF	5.50				

Lot #	Item	Description	Min. Bid	Lot #	Item	Description	Min. Bid
E.		Mint Plate # Strips of 6 or longer (con't)		251	2005	PS-5, #2, VF vert, line VF,	\$15.00
219	2124a	4.9¢ Buckboard PC, PS-8, #5, VF, line F-VF, gap 4L	\$300.00	252	2131	11¢ Stutz, PS-5, #2, V-VF vert, line VF, # 100% top 25% 2nd # bottom	5.00
220	2124a	PS-8, #6, F-VF, line F-VF, gap 4L	270.00	253	2468	\$1 Plane, PS-5, #1, XF vert, smooth tagging # split 50/50	6.00
221	2799a	29¢ Christmas, PS-8, #V1111111, XF	4.00		I.	---- Constant Plate & Mat Varieties ----	
222	2799a	SAME	7.50	254	2124a	4.9¢ Buck Board PC,(2), PS-7, #5, VF, line BF-XF, #6, VF, line F-VF double gap in top bar 2R	6.50
223	2915A	32¢ FOP, PS-7, #89899, 10x10 pv/vp, F-VF	230.00	255	2124a	(2), PS-7, #5 & 6, VF, lines F-VF, double gap in top & bottom bars 2R	6.50
224	2915A	PS-7, #99899, 11x10 pp/vv, F-VF	72.50	256	2603	10¢ E&S PS-5 #22222 (five 2s) XF-S, w/ extra blue "1" inking anomaly	4.00
225	3407a	33¢ Berries linerless, PS-9 #G1111, VF	3.00	257	2603	PS-5, #22221, VF, with extra blue 1, light brown line across strip from wiper blade	6.00
226	3407a	SAME but XF centering	7.00	258	2603	PS-5, #33333, XF, brown egg over left shoulder	3.00
227	3481a	34¢ Flowers, PS-9, #B2111, XF-S	6.50	259	2603	PS-5, #33333, XF, brown feather over R wing	3.00
F.		----- Imperfs -----		260	2603	(4) PS-5 #33333 VF, w/ 1) dot over left wing 2) tan dot over right wing, 3) blue wispy feather below red 3, 4) hanging 3s from L & shield shift to L	3.50
228	631	1-1/2¢ Harding, Horiz. Pair, S with large sheet margin @R, line fingerprint on gum	4.50	261	2603	SAME	3.50
229	2280b	25¢ Yosemite, Pair, NO#, block tag, F-VF cut close @R	5.00	262	2915A	32¢ FOP, PS-5, #89898 10x10 pv/vp, VF, bullet hole in post	7.00
230	2609a	29¢ Whitehouse, PS-3, #4, XF-S	50.00		J.	----- Tagging Varieties -----	
G.		----- Misperfs -----		263	2005	20¢ Consumer, PS-5, #4, VF, line XF, top 1/3 of strip untagged and bottom is spotty	20.00
231	1908	20¢ Pumper, (2) PS-5, #13, XF Horiz, #16, F-VF Horiz. Perfs thru R of Pumper (1-1/2mm L)	5.00	264	2112	(22¢) D Eagle, (2) PS-5, #1 & 2, F-VF, tagging shift 5mm to R	5.50
232	1908	PS-5, #16, VF Horiz. Perfs thru F of Fire, (2-1/2mm R)	3.00	265	2280d	25¢ Yosemite S-3 NO#, F-VF, untagged error	3.00
H.		----- Miscuts -----		266	2523d	29¢ Rushmore, PS-5, #6, XF, Lenz Tagging	130.00
233	1900	5.2¢ Sleigh, PS-6, #3, F-VF, line VF, #50/50	100.00		K.	----- # on # -----	
234	1900a	5.2¢ Sleigh PC, PS-5, #4, XF vert, line S, # 100% top 10% 2nd # at bottom gap 2L	10.00	267	2902	(5¢) Butte PS-5 #S333, XF, top black #1280	2.75
235	1900a	PS-5 #6, XF vert. line S, #100% top 10% 2nd# at bottom, gap 2L	10.00	268	2904A	(5¢) Mountains, PS-5, #V222222, VF-XF, blue bottom back numbers across strip 00869-00873	1.50
236	1901a	5.9¢ Bike PC, PS-11, #4, VF vert. line VF, gap 5L, # 100% top, 10% 2nd # at bottom	20.00	269	2905	(10¢) Auto, (3), PS-5, #S333, XF, top pink back #130 position 1, #160 position 3 and #190 position 5	2.50
237	1904a	10.9¢ Hansom Cab PC. PS-10, #1, F-VF vert. line F-VF, gap 4R, #100% top just trace of 2nd # at bottom	20.00	270	2912	(25¢) Juke Box, PS-5, #S22222, VF, bottom pink #06170	4.50
238	1906	17¢ Auto PS-7, #3 VF vert, line XF, # 100% top	5.00	271	3266	(33¢) H Hat, PS-5, #1111, XF, top aqua #2440 at position 4	5.50
239	1906	PS-7, #4, F-VF vert., line F-VF, # 100% top	5.00	272	3280	33¢ FOC PS-5, #1111, VF, bottom aqua #2040	6.00
240	1906	(5), #1-5, VF vert., lines S, all # 100% top	20.00	273	3466	34¢ Liberty PS-5 #1111 XF, top aqua #1640	7.00
241	1906	PS-5, #6, XF vert, line S, # 100% top	18.00	274	3466	34¢ Liberty PS-5 #1111 VF, top aqua #9540	8.00
242	1906	PS-5, #7, F-VF vert, lime VF, # 100% top	7.00	275	3631	37¢ Flag PS-5 #S1111 VF bottom pink #0790	6.00
243	1906a	17¢ Auto PC, PS-5, #5B, VF-XF vert, line VF, # 90% top 10% bottom	50.00	276	3632cd	37¢ Flag, PS-5, #S1111, VF, top pink #05230, mottled tagging	6.00
244	1906a	PS-10, #5B, F-VF vert, line F-VF, # 100% top, gap 4-1/16 R	50.00	277	3769	(10¢) Lion PS-5 #S1111 XF top pink #250	1.50
245	1906a	PS-5, #6B, F-VF vert, line F-VF, # 90% top no trace @ bottom	50.00	278	3785a	(5¢) Sea Coast,(2), PS-5, #P2222, VF, top/bottom blue #230	20.00
246	1906a	PS-10, #6B, F-VF vert, line F-VF, gap 4-1/16 R # 95% top no trace bottom	75.00	279	3980	39¢ Liberty, PS-5, #V1111, XF, middle blue #09990	6.00
247	1907	18¢ Surrey, PS-3, #13, F-VF vert, line F-VF, # 35% top/65% bottom	1.50			More lots → → → →	
248	1907	PS-5, #12, XF vert, line XF, # 100% top	8.00				
249	1908	20¢ Pumper, PS-5, #16, F-VF vert, line F-VF, # 25% top/ 75% bottom	3.00				
250	2005	20¢ Consumer, PS-5, #1, VF vert, line VF, # 100% bottom just trace 2nd # at top	15.00				

Lot #	Item	Description	Min. Bid	Lot #	Item	Description	Min. Bid
280	4131	(41¢) Flag PS-5 #S1111 XF btm pink #2000	\$8.00	303	2915B	32¢ FOP, PS-1, #S11111, tied to size 10 white window cover by 6 Feb,1998 Worcester MA BMC from Bose Corp. VF	\$4.00
L. ----- Other Varieties -----				304	3520	(10¢) Atlas, PS-1, #B1111, pv/vp on size 10 white window cover un-opened w/ contents from Associated Publishers, VF	5.00
281	2124a	4.9¢ Buck Board PC, (2), PS-5, #1, F-VF, line F & #2, VF, line XF, both gap 1-3/4 R have double break in top & bottom bars from row 1 of web	4.00	305	3874a	(5¢) Sea Coast, PS-1, #P3333, on light blue #10 window cover, VF	4.00
282	2124a	(2), #5 & 6, F-VF, lines F both have double break in top bar from row 2 of web	5.00	306	3874a	PS-1, #P9999, on size 10 white window cover from Smithsonian National Postal Museum, XF	4.00
283	2255	7.6¢ Carreta, PS-5, #2, VF, weak prints plain wheel variety	4.00	O. ----- Used Singles -----			
284	2280	25¢ Yosemite single NO# F-VF Black Trees	30.00	307	2523	29¢ Rushmore, #2, VF-XF, Lenz tagged, minor perf faults	20.00
285	2609	29¢ Whitehouse, PS-7, #7, VF, Indigo Blue color error	250.00	308	2915A	32¢ FOP #78777 10x10 pv/vp F-VF, w/ small part of stamp @L but all perfs there & sound	275.00
286	3044a	1¢ Kestral, PS-7, #3333, YMCB, XF, red seam line R of plate #	3.00	309	2915A	#87888 11x10 pp/vv on piece, VF-XF	20.00
287	3045	2¢ Woodpecker, PS-5, #22222, XF, red seam line 1R	4.00	310	2915A	#89878 10x10 pv/vp on piece, VF	12.00
288	3829	37¢ Egret, PS-5, #V2111, F-VF bell cut top	5.50	311	2915A	#89888 11x10 pp/vv VF, w/bullet hole in post	10.00
289	4389	28¢ Polar Bear, PS-7, #V11111, F-VF, pv, die cut shift changes to vp 2R	5.00	312	3770	(10¢) Atlas, #V22222, XF	7.00
290	4389	PS-11, #V11111, F-VF, die cut shift 5L, knoll perfs bottom R	6.00	313	3829	37¢ Egret, #V2121 vp/pv, VF	300.00
291	4389	PS-11, #V11111, VF, die cut shift 5L bell cut bottom R	6.00	314	3829	#V3212 pv/vp, F-VF on piece	5.00
M. FIRST DAY COVERS & PROGRAMS				P. ----- Used PS-3s -----			
292	2253	5¢ Milk Wagon PS-3 #1 + plan Pair tied to Art Craft FDC, XF, unaddressed	2.00	315	1901a	5.9¢ Bike PC, #5, VF bit low, line XF, line gap, black wavy roller cancel	20.00
293	2259	13.2¢ Coal Car, PS-3, #1, F-VF, tied to Art Master FDC, unaddressed	2.00	316	1903	9.3¢ Mail W. #1, F-VF, line VF, black wavy roller cancel	4.00
294	2261	16.7¢ Popcorn W, PS-3, #1, VF, tied to Art Master unaddressed FDC	2.00	317	1903	#2 F-VF, line F-VF black wavy roller cancel	2.00
295	2258	13¢ Police W., PS-3, #1, XF, tied to Pugh unaddressed FDC(7/43)	2.00	318	1903	#2, F-VF, line F, black wavy roller cancel	1.50
296	2124	4.9¢ Buck Board, PS-5, #4, on stamp 5 tied to plain white addressed FDC size 6, VF	25¢	319	1903	#3 VF, line VF-XF black wavy roller cancel	8.00
297	2129	8.5¢ Tow Truck PS-2, #1 + single of #1899 NO#, tied to plain cream color 5-3/8 x 3-3/4 addressed FDC, VF	25¢	320	1904	10.9¢ Hansom Cab, #1, XF, line XF, black wavy roller cancel	7.00
298	2130A	10.1¢ Oil W. PS-3, #2, tied to plain white #6 addressed FDC sealed in plastic envelope from USPS, VF	25¢	321	1904	#2, XF, line VF, black wavy roller cancel	7.00
N. ----- OTHER COVERS -----				322	2124	4.9¢ Buck Board, (2), #3&4, XF, line XF, black wavy roller cancel	1.00
299	2468	\$1 Plane, PS-1, #1, + 2523A NO#, tied to certified white cover by 22 Sep 1994 Baltimore MD 212 cancel from Senator Steve Symms (ret), VF	10.00	323	2133a	12.5¢ Pushcart #2 VF black wavy roller cancel	1.00
300	2523d	29¢ Rushmore, S-1 NO#, Lenz tagged tied to #10 white cover by 6 Apr 1992 Royal Oak, MI BMC w/enclosure note signed by Joann Lenz, F-VF	3.00	324	3617	23¢ Washington #V46 vp/pv, F-VF on piece	1.00
301	2526	29¢ Tulip, PS-3, #2222, tied to Art Craft cream FDC issued for rate change "F" Flower stamp, VF	3.50	Q. ----- Club Donations -----			
302	2915A	32¢ FOP PS-1, #99899 11x10 pp/vv, tied to white #6 cover by 4 Feb 1998 Northwest Boston 022 BMC, VF	50.00	325	1906	17¢ Auto, PS-5, #6, F-VF, line VF	1.00
				326	2529a	19¢ Fishing Boat, PS-5, #A5555, VF	1.00
				327	2529a	SAME	1.00
				328	2529a	SAME	1.00
				329	4188	41¢ Flag, S-5, NO#, VF, die cut shift between 3&4 down 1/2 perf	1.00
				330	4188	SAME	1.00
				331	(20)	4273-92 complete set of 42¢ Flags of our Nation tied to (20) size 9 white window covers w/spray cancels Feb-April 2009, VF	1.00
				332	(75)	mostly all diff used PNCs from 1c/41¢ mix not just 1st class flags many presort and non-profits included, F/VF-S	1.00
				333	(19)	mixed PNCs on various sized covers, VF	1.00
				334	(Book)	The Basic Types of Meter Stamps Catalog 3rd edition 1959 by Walter Sloan, like new	1.00
				*** Bids must be received by Thursday October 22 ***			

PNC³ AUCTION #41 OFFICIAL BID SHEET

1. Numbers in () indicate **total** number of items in lot; [] = number of items within a *subset* of the lot.
2. All lots are listed with a minimum starting bid and bids must conform!
3. For precancel strips: If there is a gap, it is listed; no listing = NO GAP!
4. In case of a tie bid, the **earliest** postmark or email date wins.
5. All winning bids will be at one bidding increment over the second high bidder.
6. I will not accept phone bids; bids must be only via mail and email!
7. R = right, L = left, HVY = heavy, Lt = light, BMC = black machine cancel, PMC = purple machine cancel, FDC = first day cover or cancel, S-# = plain strip, P = position, RHC = red hand cancel, @ = at.
8. ALL Bids must be in the auction director's hands by the closing date and not just postmarked by then!
9. Bids not conforming to the bidding increments will be lowered to that level.
10. "Buy Bids" will be accepted, but realize that only one Buy Bid can be honored and that is the *first* one, and at only one advance over second high bidder.
11. Bids with a (+) after them can be used to break a tie only if needed.
12. Please, when placing a bid over the Internet, DO NOT use a spread-sheet or other such program as I have problems opening them. Just place in a standard email form. Once placed, please do not mail a confirming copy. The email address to send your bids to is PNC3auctions@aol.com. No phone bids please!
13. If you need to call me with questions on a lot but NOT to place a bid, please call after 7 p.m. Chicago time as I still work a full-time job. (773) 622-0663.

BIDDING INCREMENTS:

\$.25	to	4.75	--	\$.25
	5.00	to	9.50	--		.50
	10.00	to	49.00	--		1.00
	50.00	to	97.50	--		2.50
	100.00	to	495.00	--		5.00
	500.00 +			--		10.00

**Bids must be in the hands
of the auctioneer by
Thursday, October 22, 2009**

NAME _____ PNC3 # _____

Home Address _____ Home Phone () _____

City _____ State _____ Zip _____

Email Address _____

Signature _____ (ALL SHEETS MUST BE SIGNED)

Please enter the following bids for me in this mail auction:

LOT #	BID	LOT #	BID	LOT #	BID	LOT #	BID	LOT #	BID	LOT #	BID
_____	_____	_____	_____	_____	_____	_____	_____	_____	_____	_____	_____
_____	_____	_____	_____	_____	_____	_____	_____	_____	_____	_____	_____
_____	_____	_____	_____	_____	_____	_____	_____	_____	_____	_____	_____
_____	_____	_____	_____	_____	_____	_____	_____	_____	_____	_____	_____

PLEASE CHECK YOUR BIDS CAREFULLY!

Please limit my purchase to \$_____. (Note! Limits under \$50.00 are respectfully declined. Bid limits will be executed in the order (vertically) that you bid the lots.)

**Send complete SIGNED bid sheets to: Joe Sedivy, PNC3 Auctioneer, P. O. Box 410602, Chicago, IL 60641
Email: PNC3auctions@aol.com**