

PNC³ AUCTION #47 OFFICIAL BID SHEET

1. Numbers in () indicate **total** number of items in lot; [] = number of items within a *subset* of the lot.
2. All lots are listed with a minimum starting bid and bids must conform!
3. For precancel strips: If there is a gap, it is listed; no listing = NO GAP!
4. In case of a tie bid, the **earliest** postmark or email date wins.
5. All winning bids will be at one bidding increment over the second high bidder.
6. I will not accept phone bids; bids must be only via mail and email!
7. R = right, L = left, HVY = heavy, Lt = light, BMC = black machine cancel, PMC = purple machine cancel, FDC = first day cover or cancel, S-# = plain strip, P = position, RHC = red hand cancel, BHC = black hand cancel, @ = at.
8. ALL Bids must be in the auction director's hands by the closing date and not just postmarked by then!
9. Bids not conforming to the bidding increments will be lowered to that level.
10. "Buy Bids" will be accepted, but realize that only one Buy Bid can be honored and that is the *first* one, and at only one advance over second high bidder.
11. IF you add a "+" (plus sign) to your Bid, I will use to break a tie only if needed.
12. Please, when placing a bid over the Internet, DO NOT use a spread-sheet or other such program as I have problems opening them. Just place in a standard email form. Once placed, please do not mail a confirming copy.
The email address to send your bids to is PNC3auctions@aol.com. No phone bids please!
13. If you need to call me with questions on a lot but NOT to place a bid, please call after 7 p.m. Chicago time as I still work a full-time job. (773) 622-0663.

BIDDING INCREMENTS:

| | | | | | | |
|----|----------|----|--------|----|----|-------|
| \$ | .25 | to | 4.75 | -- | \$ | .25 |
| | 5.00 | to | 9.50 | -- | | .50 |
| | 10.00 | to | 49.00 | -- | | 1.00 |
| | 50.00 | to | 97.50 | -- | | 2.50 |
| | 100.00 | to | 495.00 | -- | | 5.00 |
| | 500.00 + | | | -- | | 10.00 |

**Bids must be in the hands
of the auctioneer by
Wednesday, October 31, 2012**

NAME _____ PNC³ # _____

Home Address _____ Home Phone () _____

City _____ State _____ Zip _____

Email Address _____

Signature _____ (ALL SHEETS MUST BE SIGNED)

Please enter the following bids for me in this mail auction:

| LOT # | BID | LOT # | BID | LOT # | BID | LOT # | BID | LOT # | BID | LOT # | BID |
|-------|-------|-------|-------|-------|-------|-------|-------|-------|-------|-------|-------|
| _____ | _____ | _____ | _____ | _____ | _____ | _____ | _____ | _____ | _____ | _____ | _____ |
| _____ | _____ | _____ | _____ | _____ | _____ | _____ | _____ | _____ | _____ | _____ | _____ |
| _____ | _____ | _____ | _____ | _____ | _____ | _____ | _____ | _____ | _____ | _____ | _____ |
| _____ | _____ | _____ | _____ | _____ | _____ | _____ | _____ | _____ | _____ | _____ | _____ |

PLEASE CHECK YOUR BIDS CAREFULLY!

Please limit my purchase to \$_____. (Note! Limits under \$50.00 are respectfully declined. Bid limits will be executed in the order [vertically] that you bid the lots.)

**Send complete SIGNED bid sheets to: Joe Sedivy, PNC3 Auctioneer, P. O. Box 410602, Chicago, IL 60641
Email: PNC3auctions@aol.com**

Our 25th Year

PNC³



www.pnc3.org

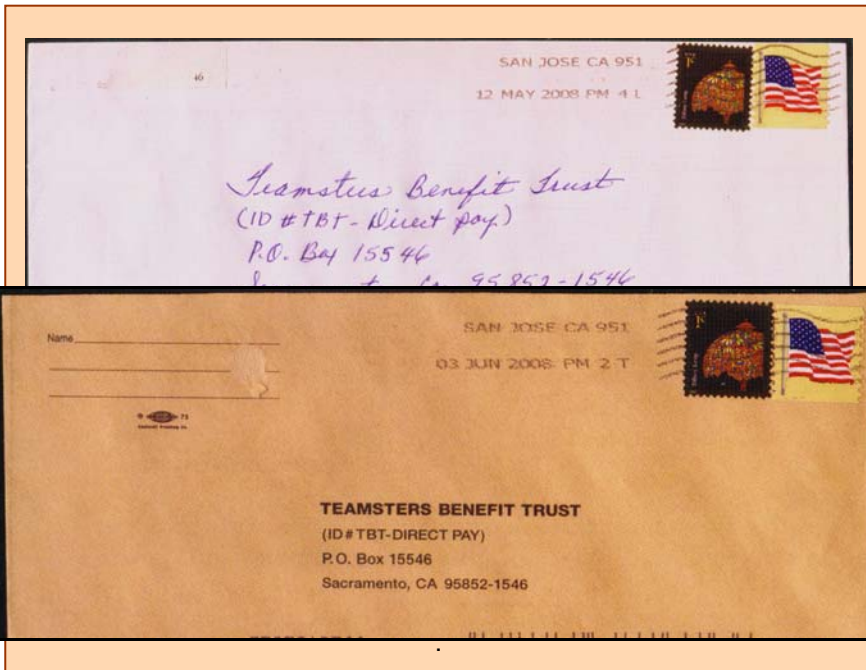
Coil Line

Journal of the PNC³
Plate Number Coil Collectors Club
American Philatelic Society Affiliate # 185

Vol. 25, No. 10

October 2012

Whole No. 292



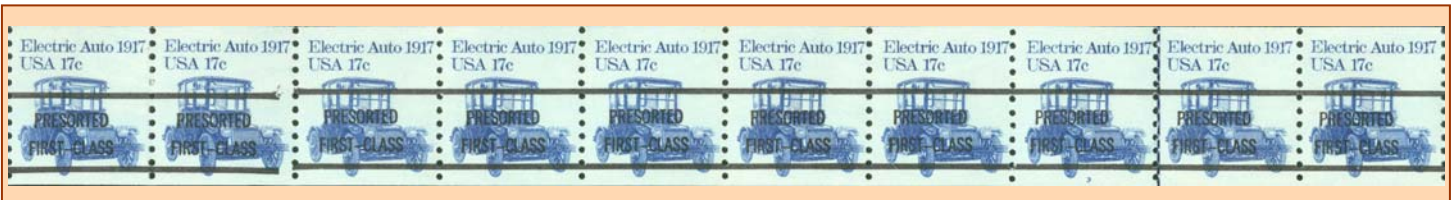
▲ Report of error discovery on two covers... page 128

Bid in the PNC³ Autumn Auction

before October 31
(see wrapper for bid sheet)

Auction lots described...
pages 120 – 126

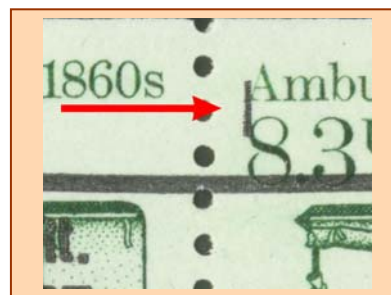
▶
Dramatic die cut shift on PNC...
page 117



▲ PNC strip lengths... page 117

Also...

PNC³ website overhaul needed... page 115
Something odd about the 1¢ Bobcat... page 116
Catalog Corner: 1¢ Bobcat #P1111... page 119



◀
25 years ago:
8.3¢ Ambulance hash mark reported...
page 116

Coil Line

Journal of the Plate Number Coil Collectors Club

Published by: **PNC³**

ISSN: 1931-5112

Editor: Ronald Blanks

coillineeditor@yahoo.com

Print Edition Mailings: Brian and Cory Snippen

bsnippen@comcast.net

Electronic Edition Emails: Frank Covey

ecoilline@macomb.com

Advertising Rates (one-time)

| | | | |
|--------------|-----------|------------------|---------------|
| Full Page | \$ 100.00 | Eighth Page | \$ 20.00 |
| Half Page | \$ 80.00 | Business Card | \$ 20.00 |
| Third Page | \$ 65.00 | Back Cover | Add \$ 50.00 |
| Quarter Page | \$ 45.00 | Inside Cover | Add \$ 25.00 |
| Sixth Page | \$ 35.00 | Color, full page | Add \$ 100.00 |

(For Color Ads, Electronic Version only, Add \$25.00)

A check or money order, made out to **PNC³**, must accompany camera ready ad. Advertising copy must be submitted by the 1st of the previous month prior to the publication date. Please send all copy to Ronald Blanks, Coil Line Editor, PO Box 9282, Chesapeake, VA 23321.

The Classified Ad rates are six cents a word per issue, with a minimum of \$3.00 per individual ad. (Two 50-word ads per year per member are available at no charge. There is a 10¢ a word charge for words over 50.)

All material, including articles submitted, will be edited and formatted for inclusion in **Coil Line**, and must be received by the 1st of the month prior to publication.

Coil Line reserves the right to edit copy as necessary.

Coil Line is published monthly and as a member benefit is sent electronically with annual dues of \$16.00. Printed version of **Coil Line** is also available. To U.S. addresses, to receive printed version add \$14.00 for Bulk Mailing; add \$22.00 for First Class Mailing. To Non-USA addresses, add \$27.00 for mailing. Past issues of **Coil Line** available at \$2.50 per copy (quantities limited).

All material is copyright 2012. All rights reserved. Material in this publication may be copied or reproduced with acknowledgment to **Coil Line**. Opinions expressed by the authors and writers are their own, and do not necessarily reflect those of the editor, publisher, or membership of the Plate Number Coil Collectors Club.

All content matters, letters to the Editor, and advertising questions should be sent to **Coil Line**, c/o Ronald Blanks, PO Box 9282, Chesapeake, VA 23321. Phone 757-478-8719; email: coillineeditor@yahoo.com. For mail delivery problems, contact the mailer below.

Postal mailings prepared by: Brian Snippen, PO Box 5542, Albuquerque, New Mexico 87185-5542. Email: bsnippen@comcast.net. Phone: 505-404-1624. Mailed from Zip Code 87185 on or near September 27, 2012.

PNC³ Contacts



Scott #2262a PS5 Plate Number 1

PNC³ Website www.pnc3.org

Ron Maifeld, **Webmaster**

email: ron.maifeld@pnc3.org

(For Coil Line-related matters, please consult column at left for appropriate contact.)

Elected Officers

Gene Trinks, **President**, 16415 W. Desert Wren Ct, Surprise, AZ 85374. email: President@pnc3.org 623-322-4619

Andrew Jakes, **Vice President**, 5203 Hayden Woods Ln, Hilliard, OH 43026. email: VicePresident@pnc3.org 614-850-0308

Harvey Wales, **Secretary**, 13 Birmingham Pl, Vernon Hills, IL 60061-2103. email: Secretary@pnc3.org 847-367-2629

John Himes, **Treasurer**, PO Box 453, Cypress, CA 90630-0453. email: johnwhimes@yahoo.com 714-826-8552

Ron Maifeld, **Past President**, PO Box 54622, Cincinnati, OH 45254-0622. email: ron.maifeld@pnc3.org 513-231-4208

Michael Mules, **At Large**, PO Box 270252, Milwaukee, WI 53227-7206. email: pnc5dealer@wi.rr.com 414-234-9867

Robert Thompson, **At Large**, 12431 Golden Thistle, Houston, TX 77058. email: rthompson@pncvarieties.com 713-419-1926

PNC³ Catalog Committee: Frank Covey, Andy Jakes, Ron Maifeld, Gene Trinks, Peter Tukker

PNC³ auctioneer: Joe Sedivy

Coil Line Production

editor: Ronald Blanks

electronic version producer: Ron Maifeld

senior consultant: Gene Trinks

technical consultant: Alan Thomson

writers:

Frank Covey, Doug Iams, Gene Trinks, Rob Washburn

contributing writers:

John Himes, Mark Schultz, Robert E. Thompson

proofreaders: Ron Archer, John Himes

graphics: Ronald Blanks, Ron Maifeld

printing: State Wide Printing - Albuquerque NM

printed mailings: Brian and Cory Snippen

electronic mailings: Frank Covey

subscriptions: Harvey Wales

President's Message

from the PNC³ president . . .

Once again, we're experiencing difficulty with our website. As this is written, we have not yet solved the problems, but continue attempts to resolve them. The website was created many years ago using software that is now obsolete and no longer supported by most host organizations. The last time we had problems, we found an organization with a legacy server that could support the software in use, and have been able to operate in a limited fashion until now. I have since tried unsuccessfully to find help within the club to build a new website using current software.

It is evident that we must change our approach to accomplishing website redesign. We will need to hire a commercial organization to do the work, and maintain the rebuilt site going forward into the future. This project will be accomplished as soon as possible. In the meantime we ask your patience.

The new website is intended to host the same PNC data that have been available in the past. Because the software is different and we will probably use pre-written templates for the pages, the look and feel of the website will change. I hope that our members find it just as easy to use as they did the old design.

We are developing design criteria to present to prospective providers in order to get quotes for the costs involved. If you would like to comment on the features you use and need going forward, please feel free to do so using my email address on the inside front cover.

For those in the Louisville area and surrounding region, I'd like to suggest that you include in your future plans a trip to the Kentucky International Convention Center in Louisville on Saturday, January 19th to attend a Regional Meeting to be hosted by Ron Maifeld. This meeting will be in conjunction with the APS AmeriStamp Expo 2013, the annual spring meeting of APS (though it seems that they're jumping the gun a little this year).

In any event, the meeting and show are sure to be a great way to spend the day. If you could spare some time on Friday, Saturday, or Sunday, we could use some volunteers to staff a club table on the show floor. Contact Ron Maifeld (information on inside front cover).
– Gene Trinks

Welcome!

If you are a new reader, PNC³ is in its 25th year. We are a community of stamp collectors specializing in the plate numbered coil issues of the USA. The first PNCs were issued in 1981 and, in February 1988, a network of PNC specialists established our club. *Coil Line* was launched in May, 1988 and serves (along with other club literature) to inform collectors on the many aspects of PNCs. Studies include scarce numbers, varieties, printing methods, market values, PNCs on mail, and more. Thank you for visiting, and we hope you'll join us!

PNC³ Regional Meetings

Ameristamp Expo 2013, Louisville KY January 19

Past President Ron Maifeld has agreed to host a PNC³ Regional Meeting at the APS Spring stamp exhibition, AmeriStamp Expo 2013 in Louisville on Saturday, January 19th. (Once determined, the time and room location will be provided in this space.) The expo will be held Friday – Sunday, January 18-20 at the Kentucky International Convention Center, 221 Fourth Street, Louisville. For more expo details, consult the APS website www.stamps.org or contact Barb Johnson, 814-933-3803 extension 217.

Want to Sponsor a Regional Meeting?

Contact Tony Bruno for suggestions. He can put you in contact with others who have taken on the task. Several members have made it a regular habit of promoting meetings in their area.

Regional Meeting Chairman

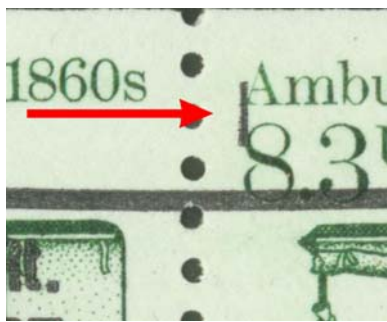
Tony Bruno, PO Box 624, East Lyme,
CT 06333-0624; email, tbbee@aol.com

(PNC³ meeting notices in this column are free. Please submit details to the Editor 3 months before the meeting.)

PNC³ always welcomes your donations of mint postage, even of presort coils. Send donations to our mailer Brian Snippen. His postal address is listed on page 114, now placed on the masthead page of every issue for the benefit of members who receive the electronic edition of *Coil Line*.

25 Years Ago This Month

The September[-October] 1987 issue of *The Plate Number* (TPN, Vol. II, No. 5) featured on page 50 a story by Steve Esrati, “Hash Marks Are Found on 8.3¢.” This refers to the 8.3¢ Ambulance issue printed on the Cottrell press (Scott 2128; a later version was produced on the BEP’s “B” press, Scott 2231). A vertical black bar of ink, about 1.5mm high, had previously been found below precancel lines at certain positions on the 5.2¢ Sleigh and 9.3¢ Mail Wagon issues. The article reported that some precanceled 8.3¢ Ambulance coils were now known with a similar bar, about 2.6mm high, but this time found “1.75mm above the top precancel bar.” Hash



marks were likely to number only one per entire press plate impression of printed precancels. Through courtesy of Robert Thompson, one of the 8.3¢ hash marks is shown in the close-up image at left.

Where might these hash marks be found in rolls of these three Transportation Series coil issues, relative to the plate numbers and the precancel gaps commonly collected? To answer this and more, relevant sections of the article are quoted below:

“The hash mark is always six stamps to the right or left of the [precancel] gap. It is usually a straight vertical line about 1.5mm tall and about 0.5mm wide. The color is identical to the black of the precancel itself.

“Further, we know that the placement of the hash mark, until now, has always been 1.75mm below the bottom precancel bar [8.3¢ find is the exception,] and that it was in the exact center of a precancel [mat]’s full length from gap to gap of 12 stamps.”

“This last fact is highlighted by the relationship of the gap to the perforations. If the precancel lines extend to the left or right beyond the perforations, the hash mark is to the left or right of the perforations by the same amount of overlap. Conversely, if the gap is exactly on the perforations, so is the hash mark.”

That last fact means the hash mark can be almost invisible as part of it is lost to the perforation. Hash marks were found on 5.2¢ #3 and #5 precancels with gap at 5L; #4, #6 with gap at 2L; for 9.3¢ #5, #6 with gap at 3L; and for 8.3¢ #1 and #2 with gap at 2L (hash mark printed six stamps to the left of the gap.)

Editor’s Message

Elsewhere in our hobby among those who collect U.S. stamps, debate of late has centered on the designs of some upcoming sheet issues. These are a new series of dollar-denominated workhorse stamps (e.g., \$1, \$5, \$10). Rather than featuring designs of conventional subject types, each stamp appears to show a magnified image of a ribbon’s strands.

In addition to the expected debate over such “avant garde” artwork, debate has arisen over the typography’s utility. The “dollar” denominations are expressed only as digits (without signs or “00”), and spelled out in tiny words obscured by the design’s color. The debaters are concerned the stamps will be confused for 1/100th their values (i.e., 1¢, 5¢, 10¢).

Interestingly, I have seen no discussion over a parallel shrinking trend of U.S. stamp designs that seems to have culminated in the tiniest “USA” designation yet on a U.S. postage stamp. I am referring to the 1¢ Bobcat coil (subject of Frank Covey’s “Catalog Corner,” page 119).

In case you haven’t seen one at “normal” size, one is shown below with other coils as approximate “actual-size” images, cropped from actual mailings. The Bobcat’s “USA” is no taller than a year date digit! Imagine an international mailing with this stamp; what is the recipient to think? Granted, given the 1¢ value, other stamps should be present with hopefully much more readable “USA” text (but with today’s quality of USPS postmarks often obscuring it, perhaps that is also expecting too much).

This issue of *Coil Line* features a story by Robert Thompson concerning lengths of PNC strips. Interestingly, about five years ago Frank Covey wrote a story titled “Storing Long Strips” in the November, 2007 issue, pages 150-151. – Ron Blanks



Recently issued USA coils. Aside from obvious design clues (i.e., the “Flag” coil), do these tell you what country they are from by their labeling?

Readers' Forum

When the 1¢ Bobcat coil came out, I ordered a 3,000-count roll at my local post office here in Charlotte, Michigan. I'm sending you a sample and it shows the back number on the backing [stamps were removed from the liner piece (both sides shown below) so only the one stamp remained when sent].

My postmaster told me I could order large rolls any time I wanted to. – Cerel M. Fritz, Jr. #2071



Bob Murrin sent the image of the PNC example below in response to the plain version shown on page 111 in last month's Coil Line. Text on that page in the printed edition has the wrong name for the die cut variety, which is corrected in the caption below.

**21¢ Bison with
"Shallow valley –
PV" dramatic die
cut shift (note
normal right-side
run of Valleys and
Peaks not matching
left side).**

*(Die cutting shifted
downward at left
side, revealing row
separator shape.)*



08750

**If the PNC is the middle stamp, is this back
number at position "2L" or "2R"?**

*(These notations and other issues about PNC strip
lengths are discussed in the next article, at right.)*

PNC Strip Lengths

for Collecting and Exhibiting Plate Number Coils

by Robert E. Thompson

I recently displayed an exhibit of plate number coils (PNCs) at the national APS StampShow, held in Sacramento, California in mid-August of this year. A comment from one of the members of the jury during the feedback forum was "Why are some of the strips so long; I thought they were collected in strips of three or five?" I know that this is not the opinion of all of the judges because I had an exhibit of the 25¢ Honeybee with PNC strips up to 18 stamps long that ultimately was awarded "Gold." However, apparently there are still some judges that might not be aware of this, and I thought that this would be a good opportunity to address the issue.

I know that in the beginning of PNCs in the early 1980s it was unclear to collectors what lengths should be kept. Many collected the plate numbers in strips of three with the plate number on the middle stamp, others collected strips of four with two stamps left of the joint line (on Cottrell-press monochrome engraved issues) and two right of the joint line, while others collected them in strips of five or longer. It was soon after the first PNCs were out that a strip of five stamps, with the plate number on the middle stamp, was generally accepted as the preferred way to collect PNCs, but still you can find many collectors that keep longer strips.

The same comments can be said for imperforate strips in the beginning. Imperforates are normally collected in pairs and PNCs are common in strips of four, five and six. In the case of imperforates, I believe the strips of four and six were so that there would be an even number of stamps to a coil of 100.

It is important to understand what to call the position of each stamp in a strip with a PNC. The position for the stamp with the plate number on it is called "one left" (1L), the stamps to the left of it would be called "two left" (2L), "three left" (3L), etc. The stamps to the right of it would be called "one right" (1R), "two right" (2R), and so on. So for a strip of five stamps, you would have two stamps to the left of the plate number, the plate numbered stamp, and two stamps to the right of it.

(On a related issue for self-adhesive stamps, to keep a strip of five you would *(please see page 118)*

(from page 117, *PNC Strip Lengths*)

cut along the right margin of the 4L stamp and the left margin of the 3R stamp; or you would remove the 4L and the 3R stamps and then cut along the backing paper to give it a neat appearance. Tearing the backing paper so that some of it is missing under the 3L or 2R stamps makes it a strip of three because the other stamps are damaged. *The backing paper must clear the edge of the die cut at both ends of the strip being kept.*

This “plate strip of 5” (“PS5”) length was okay for the general coil strips, but it did not allow for other collecting areas of PNCs, such as phosphor tagging breaks, precancel gaps, seam lines, chill-roller doubling, and imperfections printed from press plates or cylinders (e.g., cracks, scratches, gouges and much more). For these items you would start with a PS5 and add to that length the additional stamps that would show the variety plus two additional stamps past it, if possible.

For example, if you have a plate strip that has a tagging break on the 4L stamp, you would have a strip with eight stamps: two stamps before the break, the four stamps including the tagging break and the plate number, and the two stamps to the right of the plate number for a strip of eight (PS8).

On some strips, from coil issues with a plate number every 48 or 52 stamps, the variety can be quite far from the numbered stamp, requiring very long strips. In this case, many collectors would keep the stamp with the variety on the middle stamp and two additional stamps on each side of it for a strip of five, which might or might not have a PNC depending on where it occurred.

Positioning for precancel gaps to be saved is a bit different. *The position in this case refers to the location of the gap.* A gap at the perforations on the right side of the stamp with the plate number is the “Line Gap” (LG) when referring to strips from the Cottrell



A PS9

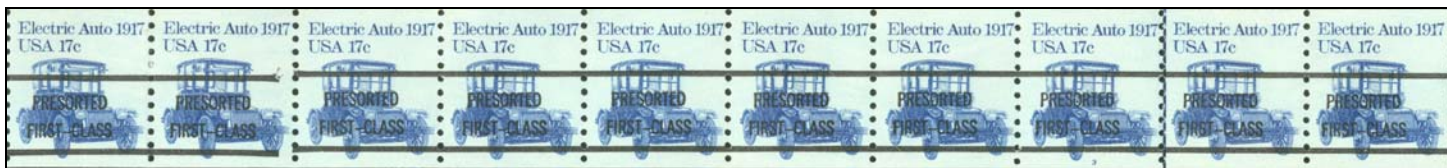
press (these normally show a joint line on them). For stamp issues without a joint line (e.g., the “B” press), a gap positioned at the same perforations (right side of the PNC) is named a “Zero” gap. In either case, on a strip with a precancel gap “six left” (6L), it would have two stamps before the gap, the six stamps including the plate number and the two stamps to the right of the plate number, for a PS10 (see example shown below). When the strips start getting this long, some collectors will try to balance the strip with an extra stamp or two at left or right, when appropriate.

Starting in the early 1990s, printers have added back numbers (BNs) to large-roll coils to show users how many stamps remained in a partially used roll. On strips with BNs, the same “position” nomenclature applies for BNs relative to the PNC, as if you could see the BN when viewing from the front [the BN shown on page 117 is at “2R”]. These are normally collected in strips of five or seven.

The location of the back number in relation to the stamp’s top and bottom edge (top, middle or bottom), or the position of the back-numbered stamp in relation to the PNC (3L, 2L, 1L, 1R or 2R), rarely seems to be an issue in regards to the length of the strip to be saved. (I arrived at this conclusion with the help of a few PNC dealers.) On some issues, a back number will not show up on strips of seven, so longer strips might be necessary.

On some issues there is more than one design (a “se-tenant” issue) and the design with the plate number is usually repeated without a plate number, as well. In that case, the strips are collected with an unnumbered design at left (first stamp) and at right (last stamp), with the numbered stamp in the middle. (See 33¢ “linerless” Berries at left.)

I know a lot of judges probably don’t subscribe to our journal, but what you can do is list this article in your exhibit bibliography; then it will be available to everyone. I know it is what I will do, from now on.



A PS10 of the 17¢ Electric Auto precancel, plate # 3 with gap at 6L (text explains these notations)

Catalog Corner

by Frank Covey



**1¢ Bobcat (AP) (SA)
Plate P1111
PNC ID 2012-7**

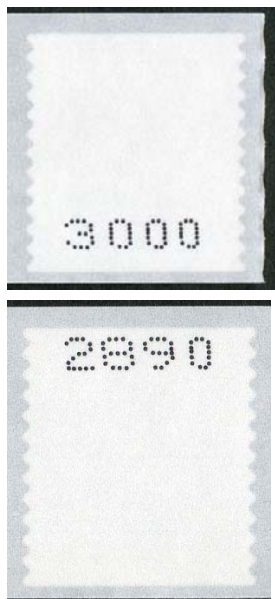
The one-cent self-adhesive Bobcat from Ashton-Potter went on sale nationwide on June 1, 2012. It is the first self-adhesive low-denomination-shown coil the U.S. Postal Service has issued (below the first-class second-ounce rate Bighorn Sheep stamp of 17¢, whose coils were issued in 2007). It is also the first 1¢ self-adhesive coil ever and comes only in rolls of 3,000 at present. It is intended for mass mailers who still have 44¢ rolls in their inventory to pay the current 45¢ first-class rate.

The P1111 plate number repeats every 27th stamp. The “2012” year date is positioned vertically in the lower right corner (a practice that appears consistent with all U.S. stamps issued with “2012” as the year date). Though it seems unlikely that anyone would counterfeit the 1¢ stamp to defraud the USPS, as a security device “USPS” is microprinted in the ear of the Bobcat (*an enlargement is shown below*).

Ashton-Potter has the ability to print back numbers without a leading zero, when the back number falls below 1000 and again when it falls below 100. Shown below are samples of four-digit, three-digit and two-digit back numbers.



at even intervals (every ten stamps) and the plate number occurs at an odd interval (every 27 stamps), a back number will fall on a plate numbered stamp every 270 stamps along the roll.



4-digit “bottom”
back number
that begins roll



4-digit “top”
back number

(both from
3K rolls)

“USPS”
microprinted
in the ear of
the Bobcat



3-digit and
2-digit
back
numbers,
unique to
Ashton-Potter
large rolls



Terms & Codes Used

1. Numbers in () indicate **total** number of items in lot; [] = number of items within a *subset* of the lot.
2. All lots are listed with a minimum starting bid and bids must conform!
3. For precancel strips: If there is a gap, it is listed; no listing = **NO GAP!**
4. In case of a tie bid, the **earliest** postmark or email date wins.
5. All winning bids will be at one bidding increment over the second high bidder.
6. I will not accept phone bids; bids must be only via mail and email! (**Please find Bid Sheet on wrapper for mail use.**)
7. R = right, L = left, HVY = heavy, Lt = light, BMC = black machine cancel, PMC = purple machine cancel, FDC = first day cover or cancel, S-# = plain strip, P = position, RHC = red hand cancel, BHC = black hand cancel, @ = at.
8. ALL Bids must be in the auction director's hands by the closing

9. Bids not conforming to the bidding increments will be lowered according to the proper increment.
10. "Buy Bids" will be accepted, but realize that only one Buy Bid can be honored and that is the *first* one, and at only one advance over second high bidder.
11. IF you add a "+" (plus sign) to your Bid, I will use to break a tie only if needed.
12. Please, when placing a bid over the Internet, DO NOT use a spreadsheet or other such program as I have problems opening them. Just place in a standard email form. Once placed, please do not mail a confirming copy. The email address to send your bids to is PNC3auctions@aol.com. No phone bids please!
13. If you need to call me with questions on a lot but NOT to place a bid, please call after 7 p.m. Chicago time as I still work a full-time job. (773) 622-0663.

BIDDING INCREMENTS

\$1.00 TO \$4.75 = .25
\$5.00 TO \$9.50 = .50
\$10.00 TO \$49.00 = 1.00
\$50.00 TO \$97.50 = 2.50
\$100.00 TO \$495.00 = 5.00
\$500.00 AND OVER = \$10.00

"I would like to thank all the members that have donated lots for this auction and future ones, since I always seem to have a backlog of them from auction to auction. Please bid on these as they help keep your dues as low as they are. Good luck in this auction to both sellers and bidders."

--Joe Sedivy,
 Auction Director

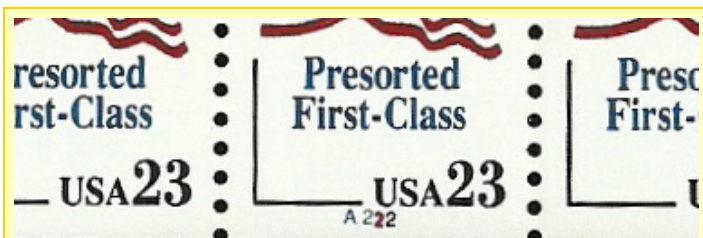
Email: PNC3auctions@aol.com

*** Bid Sheet is on inside of cover wrapper.***

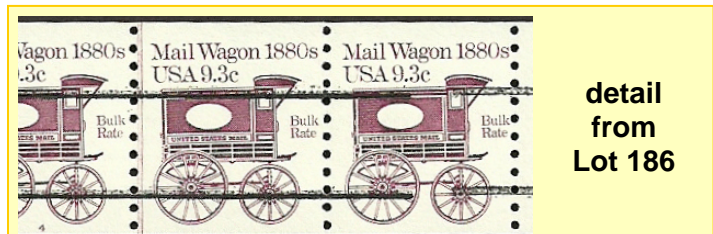
| Lot # | Item | Description | Min. Bid | Lot # | Item | Description | Min. Bid |
|--|--------|--|----------|-------|-----------|--|----------|
| A. ===== Mint Plate # Singles & Pairs ===== | | | | 15 | #1, XF | | 70.00 |
| 1 | 412 | 1¢ Washington, Line Pair, VF-XF, has small hinge remnant | 55.00 | 16 | #2, VF-XF | | 30.00 |
| 2 | 575 | 1¢ Franklin, Imperf. Pair, VF | 11.00 | 17 | #5, VF-XF | | 2.50 |
| 3 | 2915A | 32¢ FOP single #89899 10x10, pv/vp, F-VF | 125.00 | 18 | 1895a | 20¢ Flag #6 VF bit high, tag block 16½ x22 | 35.00 |
| 4 | TD133A | S-2, Black for test purposes only, NO#, XF | 20.00 | 19 | | SAME but centering is XF-S | 90.00 |
| B. ===== Mint Plate #Strips of 3 ===== | | | | 20 | 1900 | 5.2¢ Sleigh,(2) #1&2, F perfs touch @R, lines F-VF | 2.75 |
| 5 | 1891 | 18¢ Flag, (7), full set of #s #1.3.6, F-VF, #2&4, VF-XF, #5&7, S, #5 L/H, all others N/H | 500.00 | 21 | | #1, F-VF, line S, Wavy precancel lines | 3.50 |
| 6 | 1895 | 20¢ Flag, #12, XF | 1.25 | 22 | 1901a | 5.9¢ Bike P/C, #3, F-VF, line F-VF | 5.00 |
| 7 | 1908 | 20¢ Pumper, #1, F-VF, low # just touches, line XF | 7.00 | 23 | 1903a | 9.3¢ Mail Wagon PC, (2) #1&2, VF-XF, lines VF-XF | 10.00 |
| 8 | | #2, VF, line VF | 17.00 | 24 | | #3, XF, line S, gap 1R, price list \$62.50 | 27.00 |
| 9 | | #3, F-VF, line VF | 1.00 | 25 | | #4 VF, line F-VF, gap 1/2R, price list \$112 | 45.00 |
| 10 | 2889 | (32¢) Black G Flag, #1111, VF-XF | 5.00 | 26 | | #4, XF Line VF, gap 1R, price list 58.80 | 27.00 |
| 11 | 2915A | 32¢ FOP, S/A, #88898, 11x10, vv/pp, VF | 120.00 | 27 | | #8, XF line VF-XF, gap 2L, price list \$322 | 165.00 |
| 12 | | #89899, 10x10, pv/vp, F-VF | 150.00 | 28 | 1904 | 10.9¢ Hansom, #1, VF-XF, line VF, color more Rose not Lake | 3.00 |
| 13 | 3633A | 37¢ Flag, (2) #B1111, VF-XF | 4.50 | 29 | 1905a | 11¢ Caboose, #2, XF | 1.50 |
| C. ===== Mint Plate # Strips of 5 ===== | | | | 30 | 1906a | 17¢ Auto PC, #4B, F-VF, line VF | 9.00 |
| 14 | 1891 | 18¢ Flag, #1, VF | 60.00 | 31 | (2) | #1C & 2C, VF-XF, lines VF-XF, line gaps | 6.00 |
| | | | | 32 | 1907 | 18¢ Surrey, (2), #5&6, VF-XF, lines XF-S | 4.50 |
| | | | | 33 | 1908 | 20¢ Pumper,(2) #3&4, XF, line XF | 5.00 |

| Lot # | Item | Description | Min. Bid | Lot # | Item | Description | Min. Bid |
|---|---------|---|----------|-------|---|-------------|----------|
| C. (con't) --- Mint Plate # Strips of 5, con't --- | | | | 73 | #7, F-VF | | \$1.50 |
| 33 | 1908 | 20¢ Pumper,(2) #3 & #4, XF, line XF | \$5.00 | 74 | 2523A 29¢ Rushmore, #A22211, XF | | 2.75 |
| 34 | | (2), #5&10, XF, lines VF-XF | 3.00 | 75 | 2525 29¢ Tulip, #S2222, roulette type, VF | | 2.25 |
| 35 | | #6, VF, line VF | 18.00 | 76 | (2), #S1111 & S2222, XF | | 5.00 |
| 36 | | #11, F-VF, line VF | 40.00 | 77 | 2598b 29¢ Eagle, #111, XF, type "A" liner | | 5.00 |
| 37 | 2005 | 20¢ Consumer, #1, F-VF, line VF-XF | 20.00 | 78 | 2599b 29¢ Liberty #D1111 F-VF, # just clears btm | | 4.50 |
| 38 | 2115 | 22¢ Flag, #3, XF | 25.00 | 79 | 2602 10¢ E&S,(12) all diff #s, VF | | 4.00 |
| 39 | 2125a | 5.5¢ Star Truck, (2), #1&2, XF | 2.00 | 80 | 2605 23¢ Presorted Flag, #A111, XF | | 1.50 |
| 40 | 2126a | 6¢ Tricycle P/C, (2), #1&2, XF | 3.50 | 81 | (2), #A212 & A222 with fat 2, XF (image) | | 4.75 |
| 41 | 2132b | 12¢ Steamer PC, #1, VF bit high, B press | 5.50 | 82 | 2606 23¢ Presort Flag, (3), #A1111, A2233, A4443, XF | | 6.00 |
| 42 | 2136 | 25¢ Bread Wagon, #2, F-VF bit high | 1.25 | 83 | (2) #2607, 23¢ Presort Flag, #1111, #2608, 23¢ Presort Flag #S111, VF | | 5.00 |
| 43 | 2228a | 4¢ Stage, #1, VF, B Press, overall tag with break @ position 1 | 2.50 | 84 | 2609 29¢ FOWH, (3), #3,7,8, VF- XF | | 6.50 |
| 44 | | #1, VF, B Press, Overall tag | 5.00 | 85 | (3), #5-7, XF | | 3.75 |
| 45 | 2252a,b | 3¢ Conestoga, (5) #1,2,3,5,6, XF | 5.00 | 86 | 2799a 29¢ Snowman, PS-5, #V1111111, VF-XF | | 5.00 |
| 46 | 2257a | 10¢ Canal Boat #1 F-VF overall tag, dull gum | 4.50 | 87 | 2813B 29¢ Love, #B1, XF, type A backing paper | | 2.00 |
| 47 | 2257c | 10¢ Canal Boat #4 VF-XF tag break @ 1L | 2.00 | 88 | SAME | | 5.00 |
| 48 | (4) | [2] #2263 20¢ Cable Car #1&2, XF, [2] #2463, 20¢ Cog Railroad #1&2, XF | 3.50 | 89 | 2888 (25¢) G Flag Blue background #S11111 VF | | 2.00 |
| 49 | 2263b | 20¢ Cable Car, #2, VF, overall tag | 3.50 | 90 | 2890 Blue G Flag, #A2223, XF-S | | 2.00 |
| 50 | 2264 | 20.5¢ Fire Truck, #1, XF | 2.50 | 91 | (2), #A3433 & A5427, XF | | 5.00 |
| 51 | 2266 | 24.1¢ Tandem, #1, XF-S | 2.00 | 92 | (2), #A4427 & A5427, XF | | 6.00 |
| 52 | | SAME | 2.00 | 93 | #A5427, XF | | 2.75 |
| 53 | 2280 | 25¢ Yosemite, (3), #2,3,8, VF | 5.50 | 94 | 2892 Red G Flag, (2), # S1111 & S2222, XF, roulette type | | 5.50 |
| 54 | 2280a | 25¢ Yosemite, (3) #9,13,14, VF | 5.00 | 95 | 2893 (5¢) G Flag, Green backgrnd #A21111, VF | | 1.25 |
| 55 | 2452Dg | 5¢ Circus Wagon, #S2, VF-XF | 1.00 | 96 | 2904A (5¢) Mountains, #V222222, VF-XF | | 3.25 |
| 56 | (5) | 5¢ Circus Wagons, #2452, #1&2, #2452D, #S1, #2452b, #A1, #2452Dg, #S2 all VF, | 4.00 | 97 | (2) #2908, #11111, #2909, #S11111, VF-XF | | 3.00 |
| 57 | (5) | 5¢ Circus Wagons, #2452 #1&2, #2452D #S1&S2, #2452Dg, #S3, VF | 4.75 | 98 | (2) (25¢) Juke Box, #2911, #111111, #2912, #S11111, VF-XF | | 4.00 |
| 58 | 2457 | 10¢ Tractor Trailer, (3), #1, XF | 2.00 | 99 | 2912A (25¢) Juke Box, #S11111, XF | | 2.00 |
| 59 | 2463 | 20¢ Cog Railroad, #1, XF | 1.75 | 100 | 2913 32¢ FOP,(2), #11111 & 22221, VF-XF | | 4.50 |
| 60 | 2464a | 23¢ Lunch Wagon, #3, F-VF, mottled tag, dull gum | 4.00 | 101 | (2), #22221 & 22222, VF | | 7.00 |
| 61 | | SAME | 4.00 | 102 | (2), #22222 & 33333, F-VF | | 5.00 |
| 62 | 2466 | 32¢ Ferryboat, (2), #2&3, XF, shiny gum | 3.00 | 103 | (2), #33333 & 34333, XF | | 7.50 |
| 63 | | #3, VF, low gloss gum | 3.50 | 104 | (2), #44444 & 45444, VF-XF | | 6.50 |
| 64 | | #3, XF, shiny gum | 3.00 | 105 | (2), #66646 & 78767, VF-XF | | 6.50 |
| 65 | | #5, XF, shiny gum | 5.00 | 106 | (2), #91161 & 99969, VF | | 7.00 |
| 66 | | #5, VF, low gloss gum | 4.50 | 107 | 2915A 32¢ FOP (SA), (2), #11111 & 22222, 10x10, pv/vp XF | | 6.50 |
| 67 | 2468c | \$1.00 Sea Plane, #3, grainy solid tag, low gloss gum, VF | 7.50 | 108 | (2), #23222 & 33333, 10x10, pv/vp, VF | | 6.50 |
| 68 | 2518 | (29¢)F Flower, (2), #2211 & 2222, XF | 4.50 | 109 | (2), #44444 & 45444, 10x10, pv/vp, F-VF | | 6.50 |
| 69 | 2523 | 29¢ Rushmore, #1, XF-S | 1.50 | 110 | (2), #66666 & 78777, 11x10, pp/vv, VF | | 6.50 |
| 70 | | (3), #1-3, F-VF | 8.00 | 111 | #89899, 10x10, pv/vp, VF (image below) | | 175.00 |
| 71 | | (2), #6&7, VF | 5.00 | 112 | #9789, 10x10, pv/vp, VF | | 3.00 |
| 72 | | #7, VF-XF | 1.50 | 113 | (2), #88888, 11x10, pp/vv, #99999, 10x10, pv/vp, F-VF | | 6.50 |

lots continue on next page →



| Lot # | Item | Description | Min. Bid | Lot # | Item | Description | Min. Bid |
|---|-------|--|----------|--|---------|--|----------|
| C. (con't) --- Mint Plate # Strips of 5, con't --- | | | | | | | |
| 114 | | #99899, 11x10, pp/vv, VF | \$70.00 | 161 | 3615 | 3¢ Star, #S111, VF-XF, pink back #06140 on position 1 located about 9mm down of top edge (top or middle #?) | \$1.00 |
| 115 | | #99999, 11x10, pp/vv, F-VF | 5.00 | 162 | 3615a | 3¢ Star, tagged error, #S111, VF, bottom pink #03610, pos5 | 4.00 |
| 116 | | #99999, 11x10, pp/vv, VF | 5.00 | 163 | 3631 | 37¢ Waving Flag, #S1111, VF, bottom pink #1930 @ pos4 | 4.25 |
| 117 | | (2), #99999, 11x10, pp/vv, #13311A, 10x10, pv/vp, VF | 7.00 | 164 | 3632 | 37¢ Waving Flag S/A, #2222A, F-VF | 2.75 |
| 118 | | (2), #11111A & 22222A, 10x10, pv/vp, VF | 6.50 | 165 | 3633A | 37¢ Waving Flag S/A, #B1111, XF | 2.00 |
| 119 | | (2), #13231A & 13311A, 10x10, pv/vp, VF | 6.50 | 166 | 3683a | 37¢ Snowmen, #G1111, VF-XF | 4.00 |
| 120 | | (2), #33333A & 44444A, 10x10, pv/vp, XF | 6.50 | 167 | 3757 | 1¢ Tiffany Lamp, #S11111, XF, inverted pink back #5110 @ position 1 about 9mm down of top edge (top or middle #?) | 1.00 |
| 121 | | (2), #55555A 10x10, pv/vp & 66666A, 10x10, vp/pv, F-VF | 6.50 | 168 | 3769 | (10¢) Lion, #S11111, XF, bottom pink #20C0 @ pos 2 | 1.50 |
| 122 | | #77777A, 10x10, vp/pv, VF, style D | 40.00 | 169 | 3829A | 37¢ Egret S/A, #P11111, VF | 3.25 |
| 123 | | (2), #77777A & 88888A, 10x10, pv/vp, VF | 6.50 | 170 | | 37¢ Egret S/A, (2), #P11111 & P33333, VF | 6.50 |
| 124 | | #78777A, 10x10, pv/vp, F-VF | 7.00 | 171 | 4002 | 24¢ Buckeye, #V1111, pv, VF | 2.25 |
| 125 | | #78777A, 10x10, pv/vp, VF, style D | 7.00 | 172 | | #V11111, vp, VF | 2.25 |
| 126 | 2915B | 32¢ FOP S/A, #S11111, black bottom #07380 @ pos 1, XF | 2.50 | 173 | 4389 | 28¢ Polar Bear, #V11111, pv/vp, VF | 3.00 |
| 127 | 2915C | 32¢ FOP (SA), #55555, 12x12, vp/pv, VF | 10.00 | 174 | CVP31 | Variable Rate, (25), S-5, NO #s, all values 1¢-25¢, old font dull gum, F-XF, face value \$16.25 | 60.00 |
| 128 | | #66666, 11x12, vv/pp, XF | 10.00 | 175 | CVP32 | Variable Rate, 22¢, #A11, PS-5, XF | 4.50 |
| 129 | 3017a | 32¢ Santa & Children, #V1111, VF | 8.00 | 176 | O135 | 20¢ Official, #1, F-VF | 20.00 |
| 130 | 3054 | 32¢ Yellow Rose, (2), #1111 & 1122, F-VF | 6.50 | 177 | O139 | (22¢) D Official, #1, VF-XF | 12.00 |
| 131 | | (2), #2222 & 2223, VF | 6.50 | 178 | (7) | All diff PS-5 of (2) 3¢ & (5) 5¢ values face = \$1.55, VF-XF | 1.50 |
| 132 | | (2), #3444 & 4455, VF | 6.50 | 179 | (12) | PS-5, #3757, 3045, 3759, 2452Dg, 3612, 3762, all with top or bottom pink or aqua back # @ positions [1,2,4,5] | 5.00 |
| 133 | | (2), #4455 & 5555, VF-XF | 5.00 | 180 | (34) | Mixed PS-5, all WAG, 1c-10¢ values, VF-XF, \$5.15 face | 5.00 |
| 134 | | (2), #5555 & 5556, both VF | 6.50 | 181 | (9) | Mixed PS-5, all S/A, 20c-39¢ values, \$13.90 face, VF | 14.00 |
| 135 | | (2), #5566, XF, #5666, F-VF | 6.50 | 182 | \$25.39 | = Face value mixed strips sold as postage, VF-XF, some PNCs 5¢-32¢ values | 22.00 |
| 136 | | #6777, XF | 3.00 | 183 | \$49.63 | = Face value mixed strips sold as postage, VF-XF, some PNCs 5¢-32¢ values | 44.00 |
| 137 | | (2), #7777 & 8888, VF-XF | 7.00 | 184 | 3801b | (25¢) Eagle, strips of 25 with backing paper bent as mailed of USPS, face = \$45.50, PS-3s or singles can be found | 41.00 |
| 138 | | (3), #2223, 5666, 7777, VF | 7.00 | 185 | (68) | all different PS5s of 1¢-41¢, face 74.75, XF | 55.00 |
| 139 | 3133 | 32¢ FOP linerless, #M11111, VF | 3.00 | D. == Mint Plate # Strips of 6 or Longer == | | | |
| 140 | | SAME but XF | 5.00 | 186 | 1903a | 9.3¢ MailWagon PC, PS-8, #4, F-VF, line F-VF, gap 1½R price list @ \$325.00 (image) | 70.00 |
| 141 | 3208 | (25¢) Diner, #S11111, XF | 2.00 | 187 | | PS-8, #3, XF, line XF, gap 2R, type I paper, price list \$112.00 | 50.00 |
| 142 | 3228a | (10¢) Handlebars, #666, XF, round die cut shoulder | 10.00 | | | | |
| 143 | 3265 | (33¢)H Hats (SA), (2), #1111& 2222, VF | 3.00 | | | | |
| 144 | | #1131, F-VF | 5.00 | | | | |
| 145 | | #2222, VF | 2.25 | | | | |
| 146 | 3266 | (33¢)H Hat (SA)w/spaces, #1111, F-VF, top aqua #2620@ pos2 | 4.00 | | | | |
| 147 | 3280 | 33¢ FOC, (2), #1111 & 2222, XF | 6.50 | | | | |
| 148 | 3281C | 33¢ FOC, (2), #3333 & 3433, VF | 7.00 | | | | |
| 149 | 3281 | 33¢ FOC, (2), #8888 & 9999, VF | 7.00 | | | | |
| 150 | | (2), #1111A & 2222A, VF | 6.50 | | | | |
| 151 | | #4444A, F-VF, dark red color | 3.25 | | | | |
| 152 | | (2), #5555A & 6666A, F-VF | 6.50 | | | | |
| 153 | | (2), #7777A & 8888A, F-VF | 6.50 | | | | |
| 154 | 3282 | 33¢ FOC w/spaces, #1111, XF, square die cut shoulders | 2.50 | | | | |
| 155 | 3305a | 33¢ BerriesPS-5 (2), #B1111 & B2111, XF | 6.00 | | | | |
| 156 | 3407a | 33¢ Berries Vert. linerless coil, PS-5, #G1111, XF | 5.00 | | | | |
| 157 | 3452 | (34¢) Liberty, VF-XF, #1111, top aqua #1780 @pos2 | 2.50 | | | | |
| 158 | 3453b | (34¢)Liberty #1111 VF bold black (large) date | 3.50 | | | | |
| 159 | 3522 | (15¢) Woody, #S11111, VF-XF | 1.50 | | | | |
| 160 | 3550 | (34¢) UWS Flag, #1111, VF | 2.50 | | | | |

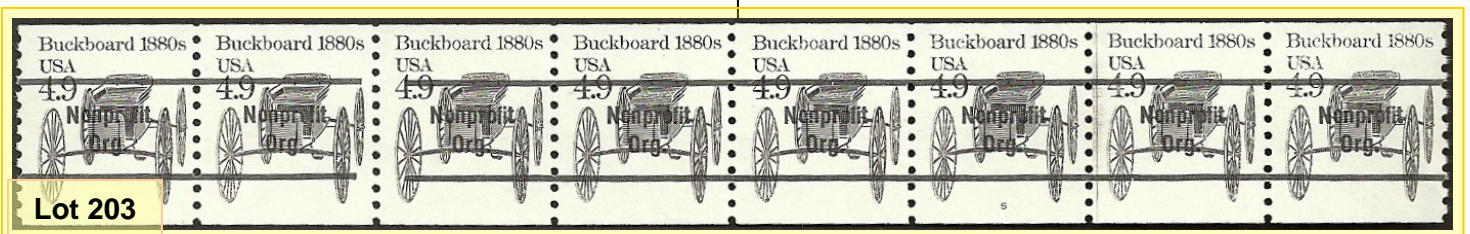


... PNC³ Autumn Auction # 47 ...

Joe Sedivy, auctioneer

| Lot # | Item | Description | Min. Bid | Lot # | Item | Description | Min. Bid |
|---|-------|--|----------|-------------------------------|------------|--|----------|
| D. (con't) Mint Plate # Strips of 6 or Longer, con't | | | | | | | |
| 188 | | PS-9, #4, VF, line XF, gap 3L, type Iia paper, not in price list | \$100.00 | 213 | 2911 (25¢) | Juke Box, PS-9, #111111, XF | \$5.00 |
| 189 | | PS-10, #4, F-VF, line VF, gap 4-1/16 L, type I paper, not in price list | 135.00 | 214 | 2913 | 32¢ FOP WAG PS-7 #22222 shiny gum XF | 2.75 |
| 190 | | PS-11, #5, XF, line S, gap 5L, type I paper, price list \$90.00 | 40.00 | 215 | 2915A | 32¢ FOP S/A PS-7 #89899 VF, 10x10 pv/vp | 210.00 |
| 191 | | PS-12, #6, XF, line S, gap 5-1/8L, type I paper, price list \$90.00 | 40.00 | 216 | | PS-7, #99999, 11x10, pp/vv, F-VF | 5.50 |
| 192 | 1904a | 10.9¢ Hansom PC, PS-10, #1, F-VF bit low, line VF gap 3R type I paper, price list \$125. | 55.00 | 217 | | PS-7, #77777A, 10x10, vp/pv, F-VF | 60.00 |
| 193 | | PS-10, #1, VF, line XF, gap 3R, type I paper, price list \$180.00 | 70.00 | 218 | | PS-7, #78777A, 10x10, pv/vp, XF-S | 18.00 |
| 194 | | PS-11, #1, F-VF bit low, line VF-XF, gap 4R, type I paper, price list \$91.00 | 27.00 | 219 | 3305a | 33¢ Berries, PS-9, #B2222, VF-XF | 5.00 |
| 195 | | PS-10, #2, XF, line S, gap 3R, type I paper, price list \$210.00 | 80.00 | 220 | 3475 | 21¢ Bison, PS-6, #V1111, VF, S/E @ left of start of roll | 2.00 |
| 196 | | PS-10, #2, VF bit low, line XF-S, gap 3R, type I paper, price list \$180.00 | 65.00 | 221 | 3641a | 37¢ Antique Toys, PS-9, # B12222, VF | 5.50 |
| 197 | | PS-11, #2, VF bit low, line XF, gap 4R, type I paper, price list \$78.00 | 35.00 | 222 | 3683a | 37¢ Snowmen, PS-6, #G1112, VF, small perf wrinkle@ top L | 2.00 |
| 198 | 1908 | 20¢ Pumper, PS-7, #7, XF-S, line XF | 125.00 | 223 | 3801a | (25¢) Eagle, PS-11, #S1111111, VF | 2.00 |
| 199 | 2005 | 20¢ Consumer, PS-7, #3, F-VF low # just touches, line S | 12.00 | 224 | 3967 | (39¢) Liberty & Flag, PS-6, #S1111, small holes, VF, bottom pink B# 2060 on position 6, 2 short perfs @Top R | 4.00 |
| 200 | | PS-7, #3, VF-XF, line S | 40.00 | 225 | (12) | Diff PS-5-7, 3¢-32¢ values, face \$4.78 mostly 5¢, VF-XF | 4.75 |
| 201 | | PS-7, #4, VF-XF, line VF-XF | 40.00 | 226 | O-159 | 37¢ Official, S-7, NO#, XF | 2.25 |
| 202 | 2124a | 4.9¢ Buckboard PC, PS-8, #1, F-VF vert, 1 ine F-VF, low but # is full @ bottom, of row 1 of web, double bar break gap 2R | 3.25 | E. ===== Imperfs ===== | | | |
| 203 | | PS-8, #5, VF, line F-VF, gap 4L, price list \$525.00 (image below) | 100.00 | 227 | 2281a | 25¢ Bee, PS-5, #1, XF-S vert, #split 50/50 | 100.00 |
| 204 | 2149a | 4.9¢ Buckboard, PS-8, #5, VF-XF, line XF, of row 1 of mat double bar break gap in both line @ 1R | 5.00 | 228 | 2281g | 25¢ Bee, PS-6, #2, S | 150.00 |
| 205 | | PS-8, #6, VF, line F-VF, gap 4L, price list \$450.00 | 100.00 | 229 | 2603a | (10¢) E&S, PS-6, #11111, S | 50.00 |
| 206 | | PS-8, #6, VF, line F-VF, of row 1 of mat double gap in both line @ 1R | 5.00 | 230 | 3632Af | 37¢ Waving Flag, S-7, NO #, S | 175.00 |
| 207 | | PS-8, #6, VF-XF, line VF, of row 3 of mat has double gap in bottom line only @ 1R | 5.00 | F. ===== Miscuts ===== | | | |
| 208 | 2132a | 12¢ Steamer PC, PS-11, #1. XF, line XF, gap 5L, price list \$595.00 | 140.00 | 231 | 1900 | 5.2¢ Sleigh, PS-6, #3, F-VF vert, line VF, #50 bottom, 80 top | 40.00 |
| 209 | | PS-11, #2, XF, line XF, gap 5L, price list \$595.00 | 140.00 | 232 | 1904 | 10.9¢ Hansom, PS-5, #1, VF vert, line VF, # split 60% top 40% bottom perfs bent between 1&2 | 6.00 |
| 210 | 2529 | 19¢ Fishing Boat, PS-7, #A1212, VF, perfs bent between stamps 5&6 | 1.25 | 233 | | PS-5, #2, F-VF vert, line F, # split 90% bottom 10% top, light perf bends like of end of tight rolled coil | 9.00 |
| 211 | 2886b | Black G Flag w/spaces, PS-7, #V11111, XF | 7.50 | 234 | 1906 | 17¢ Auto, PS-5, #2, VF vert, line XF, # 50/50 | 3.00 |
| 212 | 2892 | Red G Flag Roulette type PS-6, #S2222, XF | 2.00 | 235 | | PS-5, #5, F-VF vert, line F-VF, # 95% top no trace @ bottom | 3.50 |
| | | | | 236 | | PS-5, #6, F-VF vert, line F-VF, # 80% top 20% bottom | 3.50 |
| | | | | 237 | | PS-5, #7, VF vert, line VF, # 80% bottom no trace on top, of top row of web? | 3.50 |
| | | | | 238 | 1906 | 17¢ Auto, PS-7, #3, VF-XF vert, line XF, # 100% top | 20.00 |
| | | | | 239 | | PS-7, #4, VF-XF vert, line XF, # 100% top | 20.00 |
| | | | | 240 | 2128 | 8.3¢ Ambulance, #1, F-VF vert, line F-VF, full plate # T & B | 10.00 |

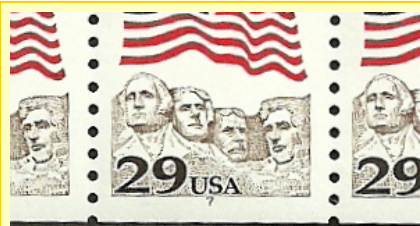
lots continue on next page



| Lot # | Item | Description | Min. Bid | Lot # | Item | Description | Min. Bid |
|--|-------|---|----------|------------------------------|-------|--|----------|
| F. (con't) ----- Miscuts ----- (con't) | | | | | | | |
| 241 | 2132 | 12¢ Steamer, (2), PS-5, #1, F-VF vert, line F does not touch Perfs, top two rows of web, top strip no#, 2nd # 100# top no# @ bottom | \$18.00 | 269 | 2451 | 4¢ Steam Carriage, PS-6, F-VF bit low, line tag break @2L | \$6.00 |
| G. === Constant Plate & Mat Varieties === | | | | | | | |
| 242 | 1898A | 4¢ Stage, PS-7, #1, F-VF, line F-VF, slash in window @1R | 5.00 | 270 | 2452A | 5¢ Circus Wagon, PS-10, #1 F-VF bit low, dull gum, tag break @6L | 9.00 |
| 243 | 2128a | 8.3¢ Ambulance P/C, PS-5, #2, missing period after (RT) on # stamp, also unlisted double gap in top line @ 1L, VF-XF line S | 5.00 | 271 | (6) | [5] PS-10, [1] PS-9, #1, all VF, line tag break @5R & it moves several mm to the R on each strip, this is a rare group! Dull gum | 500.00 |
| 244 | 2609 | 29¢ FOWH, PS-5, #10, VF, red eagle top of pole on WH, 2 short perfs @R | 8.00 | 272 | 2529b | 19¢ Fishing Boat, PS-5, #A5555, XF | 3.00 |
| 245 | 2915A | FOP, PS-5, #88888, 11x10, pp/vv, VF-XF, red dot @ bottom R of image on stamp W/# | 4.50 | 273 | 2529b | 19¢ Fishing Boat (3) PS-5 #A5555 VF-XF | 2.00 |
| 246 | | PS-5, #88888, 10x10, pv/vp, VF, brown dot by window @2L | 6.00 | 274 | 2603b | (10¢) E&S, PS-5, #11111, XF, tagged error | 4.00 |
| 247 | | PS-5, #88888, 10x10, pv/vp, F-VF, red dot in "2" on # stamp | 7.00 | 275 | | #22221, XF, tagged error | 4.00 |
| 248 | | PS-5, #89878, 11x10, pp/vv, VF-XF, brown dot below date @1L | 7.50 | 276 | 4140v | 17¢ Big Horn, PS-5, #S11111111, VF-XF, smooth tagging | 2.75 |
| 249 | | PS-5, #89888, 11x10, pp/vv, F-VF, bullet hole in post on # stamp [new find?] | 35.00 | 277 | 4141v | 26¢ Panther, PS-5, #S1111, VF, smooth tagging | 120.00 |
| 250 | | PS-7, #89899, 10x10, pv/vp, F-VF, red dot above A @ 2L (closeup image below-right) | 210.00 | I. ===== # on # ===== | | | |
| 251 | | PS-5, #9.9999, 11x10, vp/pv, VF-XF | 40.00 | 278 | 2452D | 5¢ Circus Wagon, PS-5, #S1, XF, top purple #09910 | 1.75 |
| H. ===== Tagging Varieties ===== | | | | | | | |
| 252 | 1897A | 2¢ Loco, PS-8, #2, F-VF, # just clears bottom, line XF, Bottom screw tagging break @ 4L | 5.00 | 279 | 2904 | (5¢) Mountains, PS-5, #S111, VF-XF, top pink #07100 | 2.00 |
| 253 | | PS-8, #6, F-VF, line F-VF, bottom screw tag break @4L | 3.00 | 280 | 2905 | (10¢) Auto, PS-5, #S111, XF, bottom purple #1720 on Position 4 | 1.25 |
| 254 | | PS-7, #8, VF, line VF-XF, uneven & missing tagging on all but right-hand stamp | 4.00 | 281 | 2906 | (10¢) Auto S/A, PS-5, #S111, XF, bottom pink #07760 @ position 2 | 1.75 |
| 255 | | PS-8, S, line S, uneven & missing tagging on all but right hand stamp | 5.00 | 282 | 2907 | (10¢) E&S, PS-5, #S11111, XF, bottom black #05260 @ pos 5 | 3.00 |
| 256 | 1899 | 5¢ Cycle, PS-9, # 1, S, line S, top screw tag break @4R | 9.00 | 283 | 2910 | (15¢) Tailfin S/A, PS-5, #S11111, XF, bottom black 03240 @ position 4 | 10.00 |
| 257 | | PS-9, #2, S, line S, top screw tag break @ 4R, 1 pulled perf @R | 9.00 | 284 | 2914 | 32¢ FOP WAG, PS-5, #S11111, XF, bottom black #02660, Perfs bent between stamps 1&2 | 5.00 |
| 258 | 1906 | 17¢ Auto, PS-6, #1, VF, line VF, line tag break @2L | 45.00 | 285 | 2915B | 32¢ FOP S/A w/spaces, PS-5, #S11111, XF, top black #07340 | 9.00 |
| 259 | | PS-6, #2, F-VF close @R, line F-VF, line tag break @2L | 45.00 | 286 | 3208 | (25¢) Diner, PS-5, #S11111, VF, top pink #08180 @ pos 4 | 3.00 |
| 260 | | PS-7, #3, F # just touches, line VF, bottom cap tag break @3L | 10.00 | 287 | 3631 | 37¢ Wavy Flag, PS-5, #S1111, XF, bottom pink #0790 | 5.00 |
| 261 | | PS-7, #3, F-VF bit high, line F-VF, bottom cap tag break @3L | 10.00 | 288 | 3757 | 1¢ Tiffany, (2), PS-5, #S11111, VF-XF, top pink #0550 & 0620 | 1.75 |
| 262 | | PS-7 #4 VF, line S, btm cap tag break @3L | 50.00 | 289 | 3979 | 39¢ Liberty, PS-5, #S1111, XF, bottom pink #00550 | 6.00 |
| 263 | | PS-7, #4, F-VF bit high, line S, bottom cap tag break @3L | 50.00 | 290 | 4131 | (41¢) Flag, PS-5, #S1111, VF, bottom pink #0760 | 7.00 |
| 264 | 2225A | 1¢ Omni, PS-5, #3, XF, tagged error | 8.00 | 291 | 4395 | 44¢ Flag S/A w/spaces, PS-5, #V1111, XF, middle black #02690 | 6.50 |
| 265 | | SAME | 8.00 | 292 | 4495 | (5¢) Art Deco Bird, PS-5, #P1111, S, top black #490 | 9.00 |
| 266 | | SAME | 8.00 | | | | |
| 267 | 2228A | 4¢ Stage, PS-6, #1, F-VF, tag break @3R | 2.00 | | | | |
| 268 | 2257d | 10¢ Canal boat, #4, XF, looks untagged but | 65.00 | | | | |



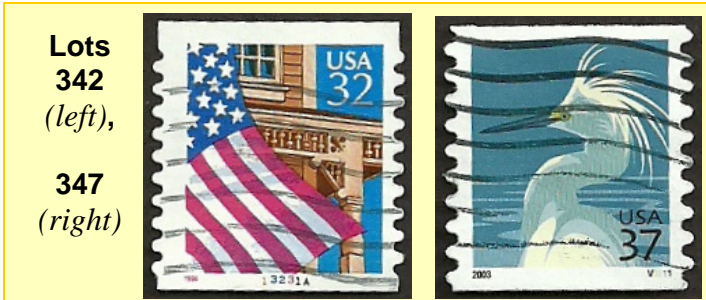
detail from Lot 250

| Lot # | Item | Description | Min. Bid | Lot # | Item | Description | Min. Bid |
|--|-------|---|----------|--|------|--|----------|
| 293 | 4496 | 44¢ Pen & Quill S/A W/spaces, PS-5, #S11111, VF, middle Pink #1440 | 4.00 | | | | |
| 294 | 4672 | 1¢ Bobcat PS-5 #P1111, VF, top black #120 | 8.00 | 319 | 2259 | 13.2¢ Coal Car, PS-1, VF, SE @R, on #10 white unopened cvr of Mutual Benefit Life | 4.75 |
| 295 | | PS-5, #P1111, S, bottom black #3000, plt # & back # on position 1, this is from start of a roll of 3K | | 320 | | PS-1, #2, VF, perfs cut short #L, on #8 gray & white window cover unopened of Credit Card Center in MI | 4.00 |
| J. ===== Other Varieties ===== | | | | 321 | | PS-1 #1 VF unopened #8 white window cvr of Commercial Credit, picture of pen on back | 4.00 |
| 296 | 2280a | 25¢ Yosemite PS-5 #2 XF foot of 2 missing | 5.00 | 322 | | PS-1, #1, XF, on 8-½ x 5-3/8 white card of Financial Planning | 4.00 |
| 297 | 2523c | 29¢ Rushmore, PS-5, #7, XF, Toledo Brown color error | 90.00 | 323 | | PS-1, #2, VF, SE @R, on #10 unopened tan cover of Hank Brown for US Senate | 4.00 |
| 298 | | PS-7, #7, VF (<i>closeup image on this page</i>) | 125.00 | 324 | | PS-1, #2, VF-XF, perfs cut short @R, o 9x6 white window cover of AMEX, opened @ bottom with enclosure | 4.00 |
| 299 | 2602 | (10¢) E&S, PS-5, #A11111, VF, broken yellow 1 | 3.00 | 325 | 2264 | 20.5¢ Fire Truck, PS-1, #1, VF-XF, on #8 cover of AMEX opened @ top with enclos. | 20.00 |
| 300 | 3044a | 1¢ Kestrel, PS-5, #3333, YMCB, VF, brown seam line @1R | 1.00 | 326 | 2265 | 21¢ RR Mail Car, PS-1, #1, VF, perfs cut short @R, on #8 white window cover of Newsweek, unopened, w/ orange USPS [D] sorting sticker @ bottom R corner | 4.00 |
| 301 | | SAME but PS-6, | 2.00 | 327 | 2453 | 5¢ Canoe, (3)PS-1 on three diff white covers, [2] are unopened of Colorado Republicans, [1] has a misperfed stamp perfs cut between dd of "Additional," 3rd cover 7¼ x 5¼ of Sangre Art Center | 5.00 |
| 302 | 3453 | (34¢) Liberty S/A, PS-9, #P1111, VF, dark date & jumbo stamp @ 3R, 22-1/2mm all others just 22mm | 35.00 | 328 | 2458 | 10¢ Tractor Trailer, PS-1, #22, XF, perfs cut short @R, on unopened #10 white window cover of Gale Norton Att'y Gen'l | 35.00 |
| 303 | 3968 | (39¢) Liberty & Flag, PS-7, #V1111, XF, thimble @bottom | 10.00 | 329 | 2463 | 20¢ Cog Rail, (2), PS-1, #1, tied to 6½ x 4¾ card of Scahu in Colorado Springs by BMC April 1996, PS-1, #2, tied to 5½ x 4¼ multi-colored card of Direct Dental Service by BMC July 1997, both VF-XF | 10.00 |
| 304 | | PS-7 #V1111, XF, knoll die cut @ bottom L | 10.00 | 330 | 3770 | (10¢) Atlas, PS-1, #V33333, on #10 white window cover unopened of Citi Professional Card, SD, XF, stamp shows color mis-alignment as written up in <i>Coil Line</i> | 2.00 |
| 305 | 4140 | 17¢ Bighorn Sheep, PS-7, #S111111, XF, color shift, white jaw | 4.00 | 331 | 4154 | (10¢) Banner, PS-1, #V333, on #10 white cover of B.Ferguson, VF | 3.00 |
| 306 | 4389 | 28¢ Bear PS-5 #V11111, F-VF, bell top left | 5.00 | 332 | 4495 | (5¢) Art Deco Bird, PS-1 #P2222, on #10 white window cover of Witf Insider, with content, VF | 4.00 |
| 307 | | PS-5, #V11111, VF, bell top right | 5.00 | 333 | | PS-1. #P2222, VF, on 4x6 white window cover w/contents of AMC | 4.00 |
| 308 | | PS-5, #V11111, VF, die cut shift 1R, L = normal v/p R = knoll @Top | 10.00 | 334 | 4588 | (25¢) Spectrum Eagle, PS-1, #V11111, on 5-½ x 8-½ ad card of Kelleher Auctions, XF | 4.00 |
| 309 | | 28¢ Bear, PS-7, #V11111, VF-XF, die cut shift @1R, bell bottom Left, R = normal pv | 12.00 | <i>lots continue on next page</i> ➔ | | | |
| 310 | 4394 | 44¢ Flag, PS-5, #V1111, VF, die cut shift, @1R, L = bottom thimble, R = normal vp | 12.00 |  | | | |
| 311 | CVP31 | Variable Rate, S-3, NO#, XF, old font dry gum, 1st stamp "0.18", 2nd "--87", 3rd "0.19" | 20.00 | | | | |
| K. ===== First Day Covers ===== | | | | | | | |
| 312 | 3132 | (25¢) Juke Box, PS-1, #M11111 + NO# single of 3133 tied to official USPS First Day Program Card for both linerless coils, XF-S | 4.00 | | | | |
| L. ===== Other Covers ===== | | | | | | | |
| 313 | 2129a | 8.5¢ Tow Truck, PS-1, #2, VF, perfs cut @R but still can be seen, on 7¼ x 5¼ cream cover of Nat'l Assoc Corp Directors, Washing. DC | 15.00 | | | | |
| 314 | 2133a | 12.5¢ Pushcart PS-1 #2, VF SE @L, on unopen #8 window cvr of Linn's Stamp News | 8.00 | | | | |
| 315 | | PS-1, #1, VF-XF, perfs cut short @R, on #8 light green unopened cover of Amex Travel | 6.00 | | | | |
| 316 | | PS-1, #1, VF, SE @R, on #10 white cover of Mutual Life | 4.00 | | | | |
| 317 | | PS-1, #1, VF-XF, perfs cut short @R, on unopened #10 kraft window cover of Check Disbursement Center | 3.50 | | | | |
| 318 | 2252a | 3¢ Conestoga, (2) unused reply covers, [1] 6¾ size of St Labre Indian School, PS-3, #3, + pair NO# of 10¢ Canal Boat, [2] on #8 of DAV, PS-4 #6 on last stamp +PS-4 #S2 of 3rd stamp of #2452D Circus Wagon, both | 2.00 | | | | |

... PNC³ Autumn Auction # 47

| Lot # | Item | Description | Min. Bid |
|------------------------------------|-------|--|----------|
| M. ===== Used Singles ===== | | | |
| 335 | 1891 | 18¢ Flag, (2), #1&2, VF-XF | 2.00 |
| 336 | 1903a | 9.3¢ Mail Wagon P/C, #3, XF full perfs | 4.00 |
| 337 | 1907 | 18¢ Surrey, (3), #4,10,11, VF | 8.00 |
| 338 | 2005 | 20¢ Consumer, (3), #1,2,4, F-VF | 1.50 |
| 339 | 2466b | 32¢ Ferry #5 Bronx Blue XF, full perfs, BMC 29¢ FOWH, (3), #5,9,14, VF-XF | 65.00 |
| 340 | 2609 | 32¢ FOP S/A, #78777A, 10x10 pv/vp, F-VF | 3.00 |
| 341 | | light BMC | 5.00 |
| 342 | 2915A | #13231A, 10x10, vp/pv, F-VF, rare die cut <i>(image below)</i> | 350.00 |
| 343 | 3770 | (10¢) Atlas, #V12111, XF | 60.00 |
| 344 | | #V13222, XF | 135.00 |
| 345 | 3785b | (5¢) Seacoast, #P2222, tagged error, XF | 25.00 |
| 346 | | SAME | 25.00 |
| 347 | 3829 | 37¢ Egret, #V3211, VF, vp/pv, only 45 reported used copies <i>(image below)</i> | 300.00 |
| 348 | (93) | All diff PS-1-3, VF, flags & transportation | 10.00 |
| 349 | (100) | Mixed PS-1, VF, mostly flags some transportations | 10.00 |
| 350 | (219) | Mixed used PS-1, mostly flags some transportations like 1907, 1904a | 20.00 |
| 351 | (9) | Mostly diff PS-1, F-VF #1891, #2, 1895, #3&5, 1907, #12, #1908 #3,4,4,5, #2005, #2, all with PMC | 4.50 |
| N. ===== USED PS-2 ===== | | | |
| 352 | 2115 | 22¢ Flag, #13, VF-XF | 5.00 |

| Lot # | Item | Description | Min. Bid |
|--------------------------------------|-------|---|----------|
| O. ===== USED PS-3 ===== | | | |
| 353 | 1897 | 1¢ Omni, (7), PS-3&4, F-VF Vert, #1&2, all split numbers Top & Bottom | 1.00 |
| 354 | (9) | Diff #1908 #9, #2464 #2, #2464a #3, #2518 #1111, #2609 #6,7,10,11, #2135 #2, all F/VF-XF | 4.50 |
| P. ===== Miscellaneous ===== | | | |
| 355 | 153 | 24¢ General Winfield, w/PF cert, unused / re-gummed over small corner crease, VF, of 1870-71 set | 500.00 |
| 356 | 2813a | 29¢ Sunshine Love booklet w/ plate #B222- 6 on type A liner, XF with possible plate crack on stamps 10&11 | 325.00 |
| 357 | (48) | Diff S-4 NO #s all transportation except for 1 Tulip, sold as Postage, face \$20.646, VF-XF | 18.00 |
| 358 | 2801 | (25¢) Eagle, Label & Wrapper of roll of 3K USPS #782800 | 1.25 |
| 359 | (100) | All different off paper of Australia & New Zealand, VF-XF | 1.50 |
| Q. ===== Club Donations ===== | | | |
| 360 | 2915C | 32¢ FOP mint snl #66666 11x12 vv/pp, XF | 1.00 |
| 361 | 2136 | (5), 25¢ Bread Wagon, PS-5, #2, VF-XF, on one strip only, Perfs cut off @R | 6.00 |
| 362 | 2518 | (29¢) F Tulip, (3), #1111, F-VF, #1222, VF, #2222, F | 4.25 |
| 363 | 3475 | 21¢ Bison (2) PS-5 #1111, [1] pv [1] vp, VF | 2.00 |
| 364 | | SAME | 2.00 |
| 365 | 4157 | (10¢) Banner PS-5, #V111, VF, die cut shift between position 3&4, 1/2mm upward shift | 1.00 |
| 366 | 4158 | (10¢) Banner, PS-5, #S111, VF, misalign- ment of die cuts on all stamps about bottom 1/3 are shifted inward | 1.00 |
| 367 | O159 | 37¢ Official, PS-7, #S111, VF | 2.50 |
| 368 | 2529 | 19¢ Fishing Boat, PS-3, #A1111, tied to unaddressed Colorado Silk FDC, XF-S | 1.00 |
| 369 | O135 | 20¢ Official, PS-2, #1, XF-S, tied to Artmaster unaddressed FDC | 1.00 |
| 370 | 3770 | (10¢) Atlas, PS-1, #V33333 on #10 white window cover, XF of California Dental Group, unopened w/content | 1.00 |
| 371 | 4157 | (10¢) Banner, PS-1, on unopened cream colored cover 7½ x 5½ of Northridge CA | 1.00 |
| 372 | (20) | Mixed covers all with PNCs overall F-VF, 21¢-37¢ values | 5.00 |
| 373 | 1908 | 20¢ Pumper, Label from roll of 3K, USPS #7728 of 1981, VF | 1.00 |
| 374 | (3) | Diff labels of rolls of 500, #2128 8.3¢ Ambulance, #2130A 10.1¢ Oil Wagon, #2132 12¢ Stanley Steamer, all of 1985, VF | 1.50 |
| 375 | 2604 | (10¢) E&S, Label of roll of 10K, USPS#7978A of 1993 | 1.00 |
| 376 | 3759 | 3¢ Silver Coffee Pot, Label of roll of 10K, USPS, 782900 | 1.00 |



**Do you have a question for auctioneer
Joe Sedivy about a lot ?**

Please note that the Wednesday, October 31
deadline for bids is for having them in Joe's
hands. Accordingly, please submit any questions
or requests for scans in a timely manner. (See
page 120 for ways to reach Joe.)

*Your bid sheet for mail-in bids can be
found on the inside of the outer wrapper.*

⌚ end of lots ⌚

Classified Ads

PNC used singles, used strips, MNH PS5s. Great prices! Guaranteed quality! No hassles! Visit <http://www.angelfire.com/ca5/HimesPNCs> or send LSASE for lists to John Himes, PO Box 453, Cypress, CA 90630-0453. Please specify what you collect. Or e-mail johnwhimes@yahoo.com. Member 957L

CLASSIFIED AD rates are 6¢ per word, with a minimum cost of \$3.00 per insertion.

PNC³ members are entitled to two free 50-word ads per year. (There is a 10¢ charge for each word over 50 with free ads.) Contact the editor to place an ad (see page 114).

Membership

New Applicants

Duane L Edwards Jr (2212)
P.O. Box 494956
Redding, CA 96049-4956
530-221-2110
nodakyak@aol.com

Terry Norris (2213)
622 Bottles St
North Pole, AK 997052
907-750-2589 mazzie@gci.net

Harry Mueggenburg (2214)
3525 Bluff Ct
Carmichael, CA 95608
916-944-7430
Opa-m@comcast.net

Leonard R. Nedervelt (2215)
P.O. Box 1060
French Camp, CA 95231
209-234-1408

Thomas D. Brown (2216)
3012 Ohio Ave
Finleyville, PA 15332
412-384-3586
Colbyben@comcast.net

Display Advertising Rates PNC³ Coil Line

| | |
|---------------------------------|---------------|
| • Full Page | \$ 100.00 |
| • Half Page | \$ 80.00 |
| • Third Page | \$ 65.00 |
| • Quarter Page | \$ 45.00 |
| • Sixth Page | \$ 35.00 |
| • Eighth Page | \$ 20.00 |
| • Back Cover | Add \$ 50.00 |
| • Inside Cover | Add \$ 25.00 |
| • Color Ad (for full page) | Add \$ 100.00 |
| • Color Ad - Electronic Version | Add \$ 25.00 |

(Discounts available for multiple insertions.)



Address Changing?



Change of Address forms and membership applications are available from Harvey Wales, Secretary, 13 Birmingham Place, Vernon Hills, IL 60061. Email: Secretary@pnc3.org. **Membership form is also on our website at:** www.pnc3.org.

Names of applicants are published for review. A member who questions the suitability of a prospective member should contact the Membership Committee c/o Robert Thompson with the objection (see page 114 for contact choices). Applicants are accepted as members one month after publication if no objection is made.

| | |
|----------------------------------|-----------------|
| Previous Membership Count | 592 |
| <u>New Members</u> | <u>5</u> |
| New Membership Count | 597 |

Coil Topics Index this issue...

| | |
|--|-----|
| 8.3¢ Ambulance hash mark pictured..... | 116 |
| 1¢ Bobcat, "USA" size comparisons..... | 116 |
| 21¢ Bison PNC V1111 dramatic die cut shift.... | 117 |
| PNC strip lengths..... | 117 |
| 33¢ Berries linerless PS9 image..... | 118 |
| 17¢ Electric Auto precanceled PS10 #3..... | 118 |
| 1¢ Bobcat Catalog Corner..... | 119 |
| 41¢ Flag, Avery, light-blue omitted error..... | 128 |
| (41¢) Flag, Avery, V1111 image closeup..... | 128 |
| 41¢ Flag, Avery, V11111 image closeup..... | 128 |

Review: News of Color-Omitted Error on 41¢ Flag

The September, 2012 issue of the *United States Specialist*, journal of the United States Stamps Society, carries a most interesting article concerning one of our PNC issues. PNC³ life member Richard J. Nazar wrote an article (pages 397-400) about not one but two covers found, each with a 41¢ Flag coil missing the “41 USA” normally printed in light-blue ink.

Cropped images of the covers’ frankings are shown below, copied from the front cover of the *Specialist*. An image of the white cover is shown on the front of this *Coil Line*, as well as a cropped image of the kraft cover involved; both are copied from page 398 of the article.

The story also notes the covers each have a Philatelic Foundation certificate stating the cover is genuine, with “single, light blue ‘41 USA’ omitted, on cover...”

Based on the same addressee involved, the common San Jose, California postmarks separated by only 22 days, the same pair of 1¢ and 41¢ frankings and the same die cutting pattern of the two Flag coils, it is extremely likely that the same mailer used stamps from the same roll to mail the two covers.

The major portion of the four-page story, subtitled “Identification Process,” concerns efforts at identifying just which version(s) of the ten (41¢) and

41¢ Flag coil issues (shown and described by Scott #) were represented by the color-omitted cases.

The described efforts first came to the (obvious) conclusion that the color-omitted Flags are from Avery-produced rolls of 100 (based on the die-cutting patterns unique to Avery), stating that they are either Scott 4134 (the undenominated version, overall phosphor-tagged), or one of the phosphor-tagging types of the “41 USA” coils (Scott 4188, 4188a).

[Note the article does not consider the possibility that another phosphor-tagged variety of the undenominated issue might be in-play. Rudy de Mordaigle wrote about a 4134 phosphored-paper variety in the December, 2011 *Coil Line*. As far as I know, the Scott editors have yet to determine if this variety exists to assign a minor-number listing to it.]

The article concludes by their phosphored-paper tagging that the color-omitted coils are of Scott 4188a. However, some basic research and any technical review apparently missed a gaping logic hole: Because a “color-omitted error” must have no trace present of the ink in question, it is impossible for these two cases to be from an undenominated issue.

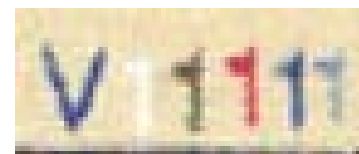
Every printer (not just Avery) used only four self-color inks to print their “USA First-Class” Flag coils. Only one of these was a “blue,” and it was the blue ink used for the flag’s field and the “USA First-Class.” [See enlarged plate numbers, below.]

In contrast, on the “41 USA” versions, every supplier employed a fifth “light blue” ink for that text. With this text missing (but the flag field present), only the phosphor tagging is left to differentiate between 4188 and 4188a. The article notes that the Specialized version of Scott’s U.S. catalog, 2013 edition (normally released this October), will list the error as 4188c, a type of 4188a.

– Ron Blanks



Avery's (41¢) Flag
plate #



Avery's 41¢ Flag
plate #
(#s courtesy Frank Covey)