

# PNC<sup>3</sup> Auction #49 Official Bid Sheet

1. Numbers in ( ) indicate **total** number of items in lot; [ ] = number of items within a *subset* of the lot.
2. All lots are listed with a minimum starting bid and bids must conform!
3. For precancel strips: If there is a gap, it is listed; no listing = NO GAP!
4. In case of a tie bid, the **earliest** postmark or email date wins.
5. All winning bids will be at one bidding increment over the second high bidder.
6. I will not accept phone bids; bids must be only via mail and email!
7. R = right, L = left, HVY = heavy, Lt = light, BMC = black machine cancel, PMC = purple machine cancel, FDC = first day cover or cancel, S-# = plain strip, P = position, RHC = red hand cancel, BHC = black hand cancel, @ = at.
8. ALL Bids must be in the auction director's hands by the closing date and not just postmarked by then!
9. Bids not conforming to the bidding increments will be lowered to that level.
10. "Buy Bids" will be accepted, but realize that only one Buy Bid can be honored and that is the *first* one, and at only one advance over second high bidder.
11. IF you add a "+" (plus sign) to your Bid, I will use to break a tie only if needed.
12. Please, when placing a bid over the Internet, DO NOT use a spread-sheet or other such program as I have problems opening them. Just place in a standard email form. Once placed, please do not mail a confirming copy. The email address to send your bids to is [PNC3auctions@aol.com](mailto:PNC3auctions@aol.com). No phone bids please!
13. If you need to call me with questions on a lot but NOT to place a bid, please call after 7 p.m. Chicago time as I still work a full-time job. (773) 622-0663.

**BIDDING INCREMENTS:**

Bids \$ .25	to	4.75	--	\$ .25
5.00	to	9.50	--	.50
10.00	to	49.00	--	1.00
50.00	to	97.50	--	2.50
100.00	to	495.00	--	5.00
500.00 +			--	10.00

**Bids must be in the hands  
of the auctioneer by  
Thursday, October 31, 2013**

NAME \_\_\_\_\_ PNC<sup>3</sup> # \_\_\_\_\_

Home Address \_\_\_\_\_ Home Phone (    ) \_\_\_\_\_

City \_\_\_\_\_ State \_\_\_\_\_ Zip \_\_\_\_\_

Email Address \_\_\_\_\_

Signature \_\_\_\_\_ (ALL SHEETS MUST BE SIGNED)

**Please enter the following bids for me in this mail auction:**

LOT #	BID	LOT #	BID	LOT #	BID	LOT #	BID	LOT #	BID	LOT #	BID
_____	_____	_____	_____	_____	_____	_____	_____	_____	_____	_____	_____
_____	_____	_____	_____	_____	_____	_____	_____	_____	_____	_____	_____
_____	_____	_____	_____	_____	_____	_____	_____	_____	_____	_____	_____
_____	_____	_____	_____	_____	_____	_____	_____	_____	_____	_____	_____

**PLEASE CHECK YOUR BIDS CAREFULLY!**

Please limit my purchase to \$\_\_\_\_\_. (Note! Limits under \$50.00 are respectfully declined. Bid limits will be executed in the order [vertically] that you bid the lots.)

**Send complete SIGNED bid sheets to: Joe Sedivy, PNC3 Auctioneer, P. O. Box 410602, Chicago, IL 60641  
Email: [PNC3auctions@aol.com](mailto:PNC3auctions@aol.com)**

## PNC<sup>3</sup> PNC Catalog Chapters Order Form (October-November 2013)

The Plate Number Coil (PNC<sup>3</sup>) Catalog Committee is accepting orders from PNC<sup>3</sup> members for the new publication and re-offered publications listed below. These will be available as long as quantities last. Orders received in October and November can be expected to be filled in 30 days; thereafter, mailing will be intermittent.

		<u>Quantity Ordered</u>	<u>Total Cost</u>
<b><u>A. New Publications</u></b>			
Precancel Gaps Values List (29 pages), black & white	\$ 4.50	_____	_____
Flags Of Our Nation (FOON) (20 pages, illustrations in color)	\$ 7.65	_____	_____
PNC <sup>3</sup> Illustrated Glossary (26 pages including 1 page of color illustrations), 4 <sup>th</sup> Edition	\$ 4.50	_____	_____
<b><u>B. Re-Offered Publications</u></b>			
2012 New Issues: 26 pages			
Stamp Illustrations in Color	\$12.40	_____	_____
Stamp Illustrations in Black & White	\$ 4.25	_____	_____
2013 Cumulative PNC-ID Index, Cross Reference			
PNC ID and Scott Numbers Index, and Alphabetical Name Index (3 items, B&W)	\$ 6.40	_____	_____
Avery Die Cut Varieties, 5 <sup>th</sup> edition, 29 pages, illustrations in color	\$10.50	_____	_____
\$0.44 Star Flag (15 pages, denominated, illustrations in color)	\$ 8.00	_____	_____
\$0.42 Flag 24/7 (15 pages, denominated, illustrations in color)	\$ 8.25	_____	_____
\$0.41 Flag on Pole (27 pages, non-denominated and denominated, illustrations in color)	\$10.50	_____	_____
\$0.39 Lady Liberty & Flag (28 pages, denominated and non-denominated, illustrations in color)	\$12.75	_____	_____
\$0.37 Flag Waving (26 pages, non-denominated and denominated, illustrations in color)	\$11.50	_____	_____
\$0.32 Flag over Porch (19 pages, non-denominated and denominated, illustrations in color)	\$ 8.50	_____	_____
<b><u>C. Postage &amp; Handling</u></b>			
\$2.80 for first item ordered	\$ 2.80		
\$0.30 for <u>each</u> additional item ordered	\$_____		
Total Postage & Handling		_____	_____
TOTAL REMITTANCE (US Funds ONLY), payable to PNC <sup>3</sup>			\$_____

Mail Order and Remittance to:

Andrew M. Jakes  
5203 Hayden Woods Ln.  
Hilliard, OH 43026-7473  
[pnctreasurer@aol.com](mailto:pnctreasurer@aol.com)

PNC<sup>3</sup> Member Number \_\_\_\_\_

Your Name (PRINT) \_\_\_\_\_

Your Mailing Address (PRINT) \_\_\_\_\_

e-mail address or evening telephone number \_\_\_\_\_

Our 26<sup>th</sup> Year

PNC<sup>3</sup>



# Coil Line

Journal of the PNC<sup>3</sup> [www.pnc3.org](http://www.pnc3.org)  
**Plate Number Coil Collectors Club**  
American Philatelic Society Affiliate # 185

**October 2013**  
Vol. 26, No. 10  
Whole No. 304



(10¢)  
**Snowflakes**  
update...  
page 123

◀  
(PNC  
mockup)

▶  
**Explanation**  
sought... page  
123



▼ **Readers' Forum... page 121**



Bid in the PNC<sup>3</sup>  
Autumn Auction!  
(see pages 124 – 132)

◀ **Auction Lot 279... page 129**

**New PNC Catalog Chapters**  
Available

**“Precancel Gaps Values List”**  
**“PNC<sup>3</sup> Illustrated Glossary,**  
**4<sup>th</sup> Edition”**

Many Past Chapters Re-offered,  
including 32¢, 37¢, 39¢, 41¢, 42¢,  
44¢ Flag-Issue Studies

*Use Order Form*  
*On Inside Wrapper*

.....  
**Also...**

SESCAL October 5th... page 119

New PNC<sup>3</sup> Webmaster... page 120

Catalog Corner: 1¢ Bobcat gummed coil... page 122

Large-roll strips/100 update... page 132

# Coil Line

Journal of the Plate Number  
Coil Collectors Club (PNC<sup>3</sup>)

Published by: PNC<sup>3</sup>  
ISSN: 1931-5112



Scott #1899 plate # 4 (Issued  
October 10, 1983 – 30 years ago)

Editor: Ronald Blanks  
[coillineeditor@yahoo.com](mailto:coillineeditor@yahoo.com)

Print Edition Mailings: Brian and Cory Snippen  
[bsnippen@comcast.net](mailto:bsnippen@comcast.net)

Electronic Edition Emails: Frank Covey  
[ecoilline@comcast.net](mailto:ecoilline@comcast.net)

## Advertising Rates (one-time)

Full Page	\$ 100.00	Eighth Page	\$ 20.00
Half Page	\$ 80.00	Business Card	\$ 20.00
Third Page	\$ 65.00	Back Cover	Add \$ 50.00
Quarter Page	\$ 45.00	Inside Cover	Add \$ 25.00
Sixth Page	\$ 35.00	Color, full page	Add \$ 100.00

(For Color Ads, Electronic Version only, Add \$25.00)

A check or money order, made out to **PNC<sup>3</sup>**, must accompany camera ready ad. Advertising copy must be submitted by the 1st of the previous month prior to the publication date. Please send all copy to Ronald Blanks, Coil Line Editor, PO Box 9282, Chesapeake, VA 23321.

The Classified Ad rates are six cents a word per issue, with a minimum of \$3.00 per individual ad. (Two 50-word ads per year per member are available at no charge. There is a 10¢ a word charge for words over 50.)

All material, including articles submitted, will be edited and formatted for inclusion in **Coil Line**, and must be received by the 1st of the month prior to publication.

**Coil Line reserves the right to edit copy as necessary.**

**Coil Line** is published monthly and as a member benefit is sent electronically with annual dues of \$16.00. Printed version of **Coil Line** is also available. To U.S. addresses, to receive printed version add \$14.00 for Bulk Mailing; add \$22.00 for First Class Mailing. To Non-USA addresses, add \$27.00 for mailing. Past issues of **Coil Line** available at \$2.50 per copy (quantities limited).

All material is copyright 2013. All rights reserved. Material in this publication may be copied or reproduced with acknowledgment to **Coil Line**. Opinions expressed by the authors and writers are their own, and do not necessarily reflect those of the editor, publisher, or membership of the Plate Number Coil Collectors Club.

All content matters, letters to the Editor, and advertising questions should be sent to **Coil Line**, c/o Ronald Blanks, PO Box 9282, Chesapeake, VA 23321. Phone 757-478-8719; email: [coillineeditor@yahoo.com](mailto:coillineeditor@yahoo.com). For mail delivery problems, contact the mailer below.

Postal mailings prepared by: Brian Snippen, PO Box 5542, Albuquerque, New Mexico 87185-5542. Email: [bsnippen@comcast.net](mailto:bsnippen@comcast.net). Phone: 505-404-1624. Mailed from Zip Code 87185 on or near September 27, 2013.

## PNC<sup>3</sup> Contacts

PNC<sup>3</sup> Website [www.pnc3.org](http://www.pnc3.org)  
Allan Clapp, Webmaster  
email: [webmaster@pnc3.org](mailto:webmaster@pnc3.org)

(For *Coil Line*-related matters, please  
consult column at left for appropriate contact.)

## Elected Officers

Gene Trinks, **President**, 16415 W. Desert Wren Ct, Surprise, AZ 85374. email: [President@pnc3.org](mailto:President@pnc3.org) 623-322-4619

Andrew Jakes, **Vice President**, 5203 Hayden Woods Ln, Hilliard, OH 43026. email: [VicePresident@pnc3.org](mailto:VicePresident@pnc3.org) 614-850-0308

Harvey Wales, **Secretary**, 13 Birmingham Pl, Vernon Hills, IL 60061-2103. email: [Secretary@pnc3.org](mailto:Secretary@pnc3.org) 847-367-2629

John Himes, **Treasurer**, PO Box 453, Cypress, CA 90630-0453. email: [johnwhimes@yahoo.com](mailto:johnwhimes@yahoo.com) 714-826-8552

Ron Maifeld, **Past President**, PO Box 54622, Cincinnati, OH 45254-0622. email: [ron.maifeld@pnc3.org](mailto:ron.maifeld@pnc3.org) 513-231-4208

Michael Mules, **At Large**, PO Box 267, Mukwonago, WI 53149. email: [pnc5dealer@wi.rr.com](mailto:pnc5dealer@wi.rr.com) 414-234-9867

Robert Thompson, **At Large**, 12431 Golden Thistle, Houston, TX 77058. email: [rthompson@pncvarieties.com](mailto:rthompson@pncvarieties.com) 713-397-1772

**PNC<sup>3</sup> Catalog Committee:** Frank Covey, Andy Jakes, Ron Maifeld, Gene Trinks, Peter Tukker  
**PNC<sup>3</sup> auctioneer:** Joe Sedivy

## Coil Line Production

**editor:** Ronald Blanks

**electronic version producer:** Ron Maifeld

**senior consultant:** Gene Trinks

**technical consultant:** Alan Thomson

**writers:**

Frank Covey, Doug Iams, Gene Trinks, Rob Washburn

**contributing writers:**

John Himes, Mark Schultz, Robert E. Thompson

**proofreaders:** Ron Archer, John Himes

**graphics:** Ronald Blanks, Ron Maifeld

**printing:** State Wide Printing - Albuquerque NM

**printed mailings:** Brian and Cory Snippen

**electronic mailings:** Frank Covey

**subscriptions:** Harvey Wales

## President's Message

### *from the PNC<sup>3</sup> president ...*

Would you like to meet other PNC collectors from your part of the world? Regional PNC meetings are a great way to do just that. Consider attending one in your area, or, better yet, sponsor a meeting yourself. It's really pretty easy to do. At bottom right is contact information for Regional Meeting chair Tony Bruno, who can provide guidance for arranging a meeting. Help is also available from Mike Conway, Membership chair ([mjconway@hotmail.com](mailto:mjconway@hotmail.com)). Basically all that's needed is to contact the chairman of a stamp show in your area to request meeting space and time for the group and advertise the meeting in *Coil Line*. Most shows are happy to provide space (or even a table on the show floor) for a national organization such as ours. Do this at least a couple months before the first of the month of the show date to allow time to get the notice into *Coil Line*.

If you live reasonably close to Little Rock, Arkansas, we can take care of making all the arrangements for a meeting for you, if you're interested in sponsoring a meeting at the APS winter meeting to be held on the third weekend in February (Feb 14 – 16, 2014). A table on the show floor can be arranged for the three days of the show if you desire, and we'll supply a club banner for display purposes. Sample copies of *Coil Line* can be made available as well. Contact me if you'd like to volunteer some time to host this event.

Don't wait for someone else to do it. If there is more than one volunteer, it will only make it easier, as staffing duties can be shared. If you don't care to have a table, a time can be arranged for a single meeting (we usually suggest Saturday afternoon) to get members together for fun, socializing, trading, etc. No formal program is required, just a brief introduction, and the ability to lead a discussion on PNC topics.

If you want to host a meeting in other locations, consider the venue of an APS World Series of Philately show. These regional events are large and well attended, and show organizers are happy to make space available for clubs such as ours. – *Gene Trinks*

## Welcome!

If you are a new reader to *Coil Line*, PNC<sup>3</sup> is in our 26<sup>th</sup> year. We are a community of stamp collectors specializing in plate numbered coil issues of the USA. The first PNCs were issued in 1981 and, in February 1988, a network of PNC specialists founded our club. *Coil Line* was launched in May, 1988 and serves (along with other club literature) to inform collectors on the many aspects of PNCs. Studies include scarce numbers, varieties, printing methods, market values, PNCs on mail, and more. Thank you for visiting, and we hope you'll join us!

## PNC<sup>3</sup> Regional Meeting

### *Early this Month: October 5* **SESCAL – Los Angeles**

PNC<sup>3</sup> members will meet at 12:00 noon on Saturday, October 5 at the SESCAL 2013 Stamp Exhibition. This is a great get-together for those living in the Los Angeles area or traveling to the show. SESCAL is taking place at The Hilton Los Angeles Airport Hotel, 5711 W. Century Blvd., Los Angeles, CA 90045, phone (310) 410-4000. The Exhibition lasts Friday through Sunday, October 4-6.

Club members Jeff Haas and John Himes are hosting the PNC<sup>3</sup> meeting. Please check for the actual room location when you arrive, as this can sometimes change.

Visitors to the meeting are always welcome. SESCAL admission is free, and an \$8 special parking rate is available to show attendees. Full information on the show is available at [www.sescal.org](http://www.sescal.org).

### **Want to Sponsor a Regional Meeting?**

Contact Tony Bruno for suggestions. He can put you in contact with others who have taken on the task. Several members have made it a regular habit of promoting meetings in their area.

#### **Regional Meeting Chairman**

Tony Bruno, PO Box 624, East Lyme, CT 06333-0624; email, [tbbee@aol.com](mailto:tbbee@aol.com)

(PNC<sup>3</sup> meeting notices in this column are free. Please submit details to the Editor 3 months before the meeting.)

## A Letter from the Webmaster

### Greetings PNC<sup>3</sup> members,

My name is Allan Clapp and I am PNC<sup>3</sup>'s new Webmaster. Ron Maifeld, PNC<sup>3</sup>'s previous Webmaster, has graciously agreed to work with me in the position of Content Master. The reason for this change is that Ron has the needed experience in stamp collecting that I lack. Therefore, by working together, Ron and I can really make the site stand out as a valuable resource to all stamp collectors!

As many of you have now noticed, the website has undergone many changes in recent months. What you are not aware of is that there are more changes to come. From time to time I will be writing to inform you about recent changes that I have made (or will be making) to the site.

### Site Lock Badge

Site Lock is an automatic service that scans the website looking for Malware and Spam (among other things) in order to protect you. The "SiteLock" badge in the upper left-hand corner assures you that the site is safe. Additionally, you can click on that badge and a popup window will appear showing you the current site lock report.

Implementing the Site Lock server is just one more way that we are showing you our commitment to make the PNC<sup>3</sup> website a safe and reliable place for our members.

### "Last Updated On" Feature

I am implementing a new "Last Updated On" feature site-wide. This program will monitor the contents of a page and change the last-updated-on date to reflect when a change is made to the contents of the page.

Unfortunately, like all automated systems, this system is a bit literal-minded. What I mean by that is just a change in the formatting of a page will refresh the date. For example, changing the font of some text from bold to italics, or making a page display better on a smart phone, counts as a change. So if you see a recent "last updated on" date at the bottom of the page, but cannot figure out why, now you know.

## Editor's Message

Well, that was embarrassing! I went to update the masthead page from a copy of last month's issue and found I had left the 25¢ Honey Bee's issue date as "1982," which is neither 25 nor 30 years ago! Of course, the correct year is 1988, 25 years ago.

Not as embarrassing, but something else I noticed on last month's color back page, was that the dark-inked perforated coils were not depicted against a *white* background. This issue's Readers' Forum shows that white is the better background for these kinds of coils.

What I hope is not an embarrassment is the latest try to improve the readability of the auction lots listed in this month's issue. Lots with longer descriptions taking up multiple lines have always been a challenge to format into a neat appearance while showing where one lot ended and the next began.

When the lot # and a Scott # appear in the two columns at left of the description, the line that starts a lot is easy to see. However, in many cases the Scott # column is blank and a continuation of one lot can look like the start of another. In the past, I used laborious indenting by hand. For our auction this time, each lot's first word or number is in boldface. Hopefully this will look as fine in print as it does on-screen. — *Ron Blanks*

### New Membership Management System

One of the larger projects that I am actively working on is a new membership management system. Some of you are no doubt wondering, "Why?" The answer is to provide a way for you to be able to update your personal information yourself. This will be accomplished by means of a secure "encrypted" webpage.

Also, with this system in place you will be able to access the last three years of the *Coil Line* Archives simply by logging into your account. Other features might be added from time to time as my project load permits.

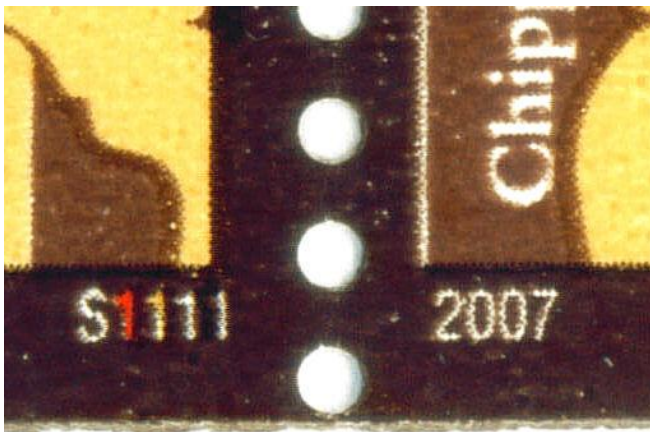
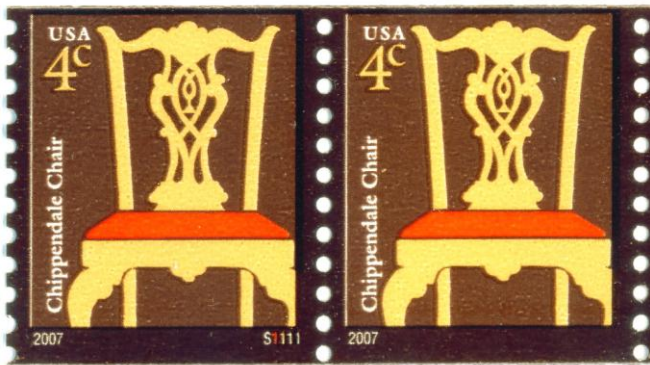
### My Open Door Policy

My door is always open to you. Feel free to write to me any time you have a concern or a suggestion on how to improve the site. My e-mail address is: [webmaster@pnc3.org](mailto:webmaster@pnc3.org).

— *Allan Clapp*, Webmaster

# Readers' Forum

The enclosed envelope came in today's mail (August 29, 2013). Note the four-cent stamps. Not only are they almost mis-slit but they have a noticeable color shift. The plus is that the left stamp is a PNC. – *Cerel M. Fritz, Jr. #1614*



*I also recall it has been stated that the Plate Number digits on our PNCs are in the same sequence as the cylinder or plate ink colors. Point being, one might think between the PNC numerals providing the inking sequence and the additional observations possible from “ink-shift” examples, an enterprising researcher could completely explain how each design in this colorful series is rendered.*

*However, even if one accepted that the PNC sequence was “correct” for any given issue, the rendering of the digits overlaying “dropouts” of the frame color can make which ink is which impossible to tell at times. A closeup of the 4c Chair PNC’s number (at left) shows this. – Editor]*

(please see page 123)

*[Cerel’s letter was a pleasant surprise to receive over the Labor Day weekend. It also stole the thunder from a small feature that was in planning in recent months for Coil Line, which is now the commentary below.]*

*In researching recent articles about thick or thin frame lines and seam lines, I had found similar ink shifts among the American Design coil issues and interestingly, the two shown below (right column) are of other denominations.*

*I recall Doug Iams’ response to recent comments about varying “black” frame lines, pointing out that instead these were more likely just darker-appearing due to greater overlap of a frame color and a background color.*





The water-activated gum (WAG) 1¢ Bobcat in rolls of 10,000 was released August 9, 2013 at the APS StampShow in Milwaukee, Wisconsin. However, those who ordered the unfolded strip of 100 of the WAG Bobcat through the USPS's *USA Philatelic* sales catalog (Item 789205) mentioned in the August 2013 *Coil Line* received their new stamps before the official release date. (The design was previously issued in 2012 as a self-adhesive in large-roll format of 3,000, produced by Ashton Potter.)

The S111111 plate number shown nearby at left repeats every 31st stamp along the roll. Most collectors will save this as a PS5 (plate strip of 5) with the plate numbered stamp in the middle of the strip.

Multiple perforation hole sizes are known. Two examples of the range of possibilities are shown at the bottom of this page. They exhibit "small-hole" and "medium-hole" sized perforation cases.

"USPS" is microprinted near the lower right corner of the design.

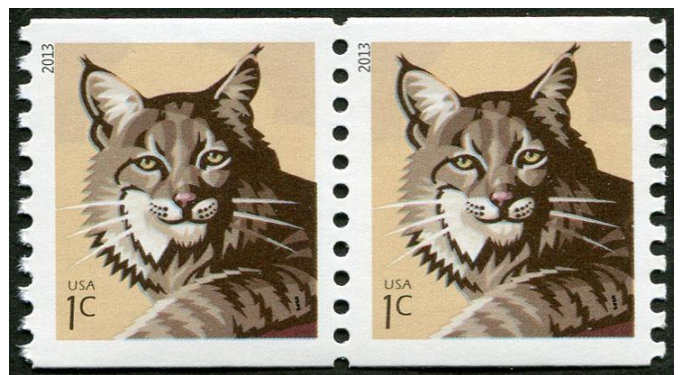


←  
"USPS"  
microprinted  
near the lower  
right corner  
on the upper part  
of the Bobcat's  
leg.

**1¢ Bobcat (SSP) (WAG)  
Plate S111111  
PNC ID 2013-7**



**Small-hole perf**



**Medium hole perf**

## Classified Ads

**PNC used singles**, used strips, MNH PS5s. Great prices! Guaranteed quality! No hassles! Visit <http://www.angelfire.com/ca5/HimesPNCs> or send LSASE for lists to John Himes, PO Box 453, Cypress, CA 90630-0453. Please specify what you collect. Or e-mail [johnwhimes@yahoo.com](mailto:johnwhimes@yahoo.com). Member 957L  
\*\*\*

**Specialized Self-Adhesive** Convertible Booklet & ATM Pane price list featuring plate numbers, liner types, die cut varieties, test panes. Booklet & Booklet Pane price list featuring plate numbers, positions, cover varieties etc. starting with BK102 also available. Doug Iams, PO Box 7651, Santa Rosa CA 95407. Member 625  
\*\*\*

**US Postal Counterfeits** Wanted. And information about them. PNCs or any US issue; used, unused, and on cover. Will buy or trade for other philatelic material. John Hotchner (compiler of the *Scott US Specialized Postal Counterfeits listings*), PO Box 1125, Falls Church, VA 22041-0125. Email: [jmhstamp@verizon.net](mailto:jmhstamp@verizon.net). Member 1619  
\*\*\*

**For Sale: Scott's** Comprehensive Plate # Coil Strip Albums. New Never Used. Complete album pages 1981 through 2007 in 2 each Scott albums. Scott's sales price over \$430 plus tax. My sale price \$200 plus shipping. Ron Bergstrom, 916-253-7532 or [ronaldbergstrom@hotmail.com](mailto:ronaldbergstrom@hotmail.com). Member 2120

**CLASSIFIED AD** rates are 6¢ per word, with a minimum cost of \$3.00 per insertion.

**PNC<sup>3</sup> members** are entitled to two free 50-word ads per year. (There is a 10¢ charge for each word over 50 with free ads.) Contact the editor to place an ad (see page 118).

## Coil Topics Index this issue...

4¢ Chair S1111 ink shift.....	121
5¢ Toeware ink shift.....	121
10¢ Clock (2008) ink shift.....	121
1¢ Bobcat WAG Catalog Corner.....	122
42¢ Flags 24/7 (Sennett) black lines.....	123
(10¢) Snowflakes update.....	123
“strips of 100” in boxes update.....	132

*Current Plate Numbers, Roll Sizes chart will return in a future issue.*

## Display Advertising Rates *Coil Line*

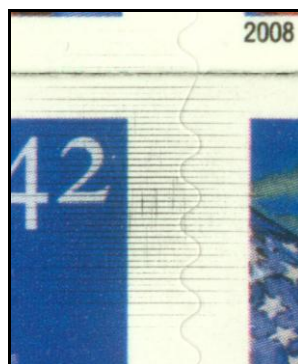
• Full Page	\$ 100.00
• Half Page	\$ 80.00
• Third Page	\$ 65.00
• Quarter Page	\$ 45.00
• Sixth Page	\$ 35.00
• Eighth Page	\$ 20.00
• Back Cover	Add \$ 50.00
• Inside Cover	Add \$ 25.00
• Color Ad ( <i>for full page</i> )	Add \$ 100.00
• Color Ad - Electronic Version	Add \$ 25.00

(Discounts available for multiple insertions.)

## (10¢) Snowflakes Update

**By Doug Iams** – The U.S. Postal Service's September 5th *Postal Bulletin* says the upcoming (10¢) Snowflakes coil is being printed for Avery by a new subcontractor – CCL Label, Inc., of Clinton, SC (same town as Avery). It turns out that Avery sold the part of their business that included the stamp printing operation to CCL, which is held by a Canadian firm. The really unexpected thing is the plate number is reported to start with a C rather than a V. (Usually the letter chosen is that of the main contractor).

The initial printing quantity is 500 million in rolls of 10,000. The plate # interval is 30. CCL used eight colors to print the stamps. According to the September 23<sup>rd</sup> issue of Linn's Stamp News, the plate # is “C11111111,” and the issue will be officially released on October 1<sup>st</sup> in Weston, MO.



(from page 121, Readers' Forum)

**Cropped image from 42¢ Flags 24/7 with fine black horizontal lines.**

Robert E. Thompson solicits reader input as to other cases and the cause. (please see page 132)

### Terms & Codes Used

1. Numbers in ( ) indicate **total** number of items in lot; [ ] = number of items within a *subset* of the lot.
2. All lots are listed with a minimum starting bid and bids must conform!
3. For precancel strips: If there is a gap, it is listed; no listing = **NO GAP!**
4. In case of a tie bid, the **earliest** postmark or email date wins.
5. All winning bids will be at one bidding increment over the second high bidder.
6. I will not accept phone bids; bids must be only via mail and email! (**Please find Bid Sheet on wrapper for mail use.**)
7. R = right, L = left, HVY = heavy, Lt = light, BMC = black machine cancel, PMC = purple machine cancel, FDC = first day cover or cancel, S-# = plain strip, P = position, RHC = red hand cancel, BHC = black hand cancel, @ = at.
8. ALL Bids must be in the auction director's hands by the closing

- date **Thursday, October 31, 2013** and not just postmarked by then!
9. Bids not conforming to the bidding increments will be lowered according to the proper increment.
10. "Buy Bids" will be accepted, but realize that only one Buy Bid can be honored and that is the *first* one, and at only one advance over second high bidder.
11. IF you add a "+" (plus sign) to your Bid, I will use to break a tie only if needed.
12. Please, when placing a bid over the Internet, DO NOT use a spreadsheet or other such program as I have problems opening them. Just place in a standard email form. Once placed, please do not mail a confirming copy. The email address to send your bids to is [PNC3auctions@aol.com](mailto:PNC3auctions@aol.com). No phone bids please!
13. If you need to call me with questions on a lot but NOT to place a bid, please call after 7 p.m. Chicago time as I still work a full-time job. (773) 622-0663.

## BIDDING INCREMENTS

**\$1.00 TO \$4.75 = .25**  
**\$5.00 TO \$9.50 = .50**  
**\$10.00 TO \$49.00 = 1.00**  
**\$50.00 TO \$97.50 = 2.50**  
**\$100.00 TO \$495.00 = 5.00**  
**\$500.00 AND OVER = \$10.00**

"I would like to thank all the members that have donated lots for this auction and future ones, since I always seem to have a backlog of them from auction to auction. Please bid on these as they help keep your dues as low as they are. Good luck in this auction to both sellers and bidders."

--Joe Sedivy,  
 Auction Director

Email: [PNC3auctions@aol.com](mailto:PNC3auctions@aol.com)

**\* Bid Sheet is on inside of cover wrapper.\***

Lot #	Item	Description	Min. Bid	Lot #	Item	Description	Min. Bid
<b>A. ===== Mint Plate # Singles &amp; Pairs =====</b>				12	1901a	<b>5.9¢</b> Bike P/C, #5, F-VF, # just clears bottom, line F-VF, L/G	\$15.00
1	(16)	<b>All</b> diff. line pairs of the following, #1055a, 1057, 1059Ag, 1297, 1299, 1304, 1304c, 1305e, shiny gum, 1305e, dull gum, 1401, 1518, 1520, 1613, 1614, 1615, shiny gum, 1615, dull gum. All are VF-XF copies	\$15.00	13		<b>#6</b> , F-VF, close @R, line F-VF, gap 1/5L	15.00
2	2915A	<b>32¢</b> FOP single #89899, 10x10 pv/vp, F-VF	52.50	14	1903a	<b>9.3¢</b> Mail W. P/C, (4), #1-4, VF-XF, lines VF-XF	5.50
3	(6)	<b>#3829</b> , 37¢ Egret, [4] #V2111 & V3222 both p/v, #V2111 & V3222, both v/p, [2], 3829A, P11111 & P33333, all VF-XF	3.00	15	1904	<b>10.9¢</b> Hansom, #1, F-VF, close @R, line F	1.00
<b>B. ===== Mint Plate #Strips of 3 =====</b>				16	1906a	<b>17¢</b> Auto P/C, (5), #3A-7A, F/VF-XF, lines F/VF-S	5.00
4	1891	<b>18¢</b> Flag, #2, VF	3.00	17		<b>(4)</b> #1C-4C VF-XF line VF-XF all Line Gap	3.50
5		<b>#3</b> , F-VF	15.00	18	1908	<b>20¢</b> Pumper, #1, VF-XF, line VF	4.50
6		<b>#6</b> , F-VF, perfs close @R but clear	120.00	19		<b>#7</b> , F-VF, line VF	5.00
7		<b>(7)</b> , full set of #s #1.3.6, F-VF, #2&4, VF-XF, #5&7, S, #5 L/H, all others N/H	300.00	20	2005	<b>20¢</b> Consumer, (2), #1, VF-XF, line VF, #2, VF-XF, line XF-S	5.00
8	1900	<b>5.2¢</b> Sleigh, #2, F-VF, line VF	1.00	21		<b>#3</b> , VF-XF, line VF-XF	6.50
9	1900a	<b>5.2¢</b> Sleigh P/C, (2), #4, VF-XF, line XF, #6, VF-XF line VF	3.00	22	2260	<b>15¢</b> Tug, #2, XF-S	1.00
10	1901	<b>5.9¢</b> Bike, #2, F, perfs just touch @R, line F	1.00	23	2915A	<b>32¢</b> FOP, S/A, #89899, 10x10, pv/vp, F-VF	100.00
11		<b>#4</b> , VF, line F-VF	1.50	<b>C. ===== Mint Plate # Strips of 5 =====</b>			
				24	1891	<b>18¢</b> Flag, #5, XF-S	3.00
				25	1895a	<b>20¢</b> Flag, #6, XF, tag block 16-1/2 x 22	70.00
				26	1895b	<b>20¢</b> Flag P/C, #14, XF-S	19.00
				27		<b>SAME</b>	20.00

# ... PNC<sup>3</sup> Autumn Auction # 49 ...

Joe Sedivy, auctioneer

Lot #	Item	Description	Min. Bid	Lot #	Item	Description	Min. Bid
28	1898A	<b>4¢</b> Stage, #3, XF-S, line XF, with 2013 PSE Certificate states XF-S grade 95 MNH	\$25.00	52	1908	<b>20¢</b> Pumper, #1, VF, line XF	\$50.00
29	1899	<b>5¢</b> Motorcycle, #2, S, line S, with 2013 PSE Certificate states Superb grade 98, MNH	35.00	53		#1, XF, line S	50.00
30	1900	<b>5.2¢</b> Sleigh, #5, XF, line S <i>(image below)</i>	95.00	54		#2, XF, line VF-XF	295.00
31	1900a	<b>5.2¢</b> Sleigh P/C, #2, VF, line VF-XF, looks like gap 2R, this gap position not listed, both lines end flat just at perf start	6.00	55		#2, XF-S, line XF-S, with 2011 PSE Certificate states XF-Sup grade 95 MNH	360.00
32		#2, VF-XF, line VF-XF, no gap	4.50	56		#2, XF, line VF	315.00
33	(3)	#1901, 5.9¢ Bike, (2), #3, F-VF, line F-VF, #4, XF, line XF, #1901a, #4, XF, line VF	15.00	57		#5, S, line S, with 2013 PSE Certificate states Superb grade 98 MNH	35.00
34	1903	<b>9.3¢</b> Mail W. #5, F-VF, bit low & R, line F	82.50	58		(3), #5,9,&10, XF, lines XF	5.00
35	1903a	<b>9.3¢</b> Mail W. P/C, #4, VF, line F-VF, gap 1/2R, price list \$112.00	35.00	59		(5), #3,4,5,9,10, F/VF-S, lines F/VF-XF	7.00
36		#8, VF-XF, line F-VF, gap 2L, price list \$322.00 <i>(image below)</i>	100.00	60		(3), #5,12, &14, XF, lines VF-XF	5.00
37	1905a	<b>11¢</b> Caboose, #2, VF	1.50	61		(2), #12 & 14, F/VF-S, lines F/VF-S	11.00
38	1906a	<b>17¢</b> Auto PC, #3B, VF, # sets on bottom but whole, line XF	12.00	62	2115	<b>22¢</b> Flag, (3), #1, F-VF, #8 &18, VF-XF	7.00
39		#4B, VF-XF, line XF	9.00	63		#3, F-VF	15.00
40		#4B, F-VF, # just clears bottom, line XF	10.00	64	2125a	<b>5.5¢</b> Star Truck, (2), #1&2, XF	2.00
41		#4B, XF, line S	20.00	65	2126a	<b>6¢</b> Tricycle P/C, (2), #1&2, XF	3.50
42		(2), #1C & 2C, VF-XF, line VF-XF, line Gap	6.00	66	2136	<b>25¢</b> Bread Wagon, #2, F-VF bit high	1.25
43		#5BA, VF, line VF, line gap	25.00	67	(5)	#2149, 18¢ Washington, [2], #1112 & 3333, #2149, 18¢ Washington P/C, [3], #11121, 33333, 43444, all F/VF-S	9.00
44		#5BA, XF vert, #full @ bottom trace of 2nd # @top, line XF line gap	35.00	68	(4)	#2150, 21.1¢ Envelope, [2], #11111, 11121, #2150a, [2] #11111 & #11121, all F/VF-XF	7.00
45		#6BA, F, low & Left, line XF, line gap	32.00	69	2228a	<b>4¢</b> Stagecoach, #1, VF, B Press, overall tag	4.50
46		#6BA, F-VF, bit low, line XF-S, line gap	25.00	70	2252	<b>3¢</b> Conestoga, (5), #1, #2252b, #2&3 dull gum, #5&6 shiny gum all XF	5.00
47	1907	<b>18¢</b> Surrey, #3, VF-XF, line VF-XF	25.00	71	2252a	<b>3¢</b> Conestoga #5 F-VF untagged, shiny gum	3.00
48		#4, XF, line XF-S	25.00	72	2260a	<b>15¢</b> Tug, #2, XF, overall tagged	1.50
49		<b>SAME</b>	25.00	73	(3)	<b>20¢</b> Cable Car #2263 [2] #1,2, #2263b, #2, all VF-XF	5.00
50		(2), #5&6, VF-XF, lines XF-S	4.50	74	2266	<b>24.1¢</b> Tandem, #1, XF-S	2.00
51		(8), #2,5,6,8,13,14,17,18, F/VF-XF, lines ...	9.00	75	2452	(5), #1&2, #2452D, #S1, #2452b, #A1, #2452Dg, #S2 all VF, 5¢ Circus Wagons	4.75 →→→



Lot 30



Lot 36

Lot #	Item	Description	Min. Bid	Lot #	Item	Description	Min. Bid
C. (con't)	-----	Mint Plate # Strips of 5 (con't) -----		120	(2), #91161 & 99969, VF		\$6.50
76	2457	10¢ Tractor Trailer, (3), #1, XF	\$1.50	121	2915A 32¢ FOP (SA), (2), #22222 & 23222, 10x10, pv/vp VF		6.50
77	(3)	#2457, 10¢ Tractor Trailer, #1, #2458, (2), #11 & 22, all XF	5.00	122	(2), #66666 & 78777, 11x10, pp/vv, F-VF		6.50
78	2463	20¢ Cog Railroad, #1, XF	1.25	123	#88898, VF, 10x10, pv/vp		45.00
79	2466	32¢ Ferryboat, #3, XF, shiny gum	3.00	124	#99899, F-VF, 10x10, pv/vp		3.50
80		#5, XF, shiny gum	5.00	125	#99999, 11x10, pp/vv, VF		4.00
81		#5, VF, low gloss gum	4.75	126	(2), #11111A & 22222A 10x10 pv/vp F-VF		6.50
82	2468c	\$1.00 Seaplane, #3, low gloss gum, VF-XF	9.00	127	(2), #13231A & 13311A, VF		6.00
83	2518	"F" Flower (2), #1111 & 2222, VF perf type	3.50	128	(2), #33333A & 44444A, F-VF		6.50
84	2523	29¢ Rushmore, #1, XF-S	1.50	129	(2), #55555A & 66666A, F-VF, 10x10, pv/vp		6.50
85		(3), #1-3, F-VF	6.00	130	#78777A, 10x10, pv/vp, F-VF		6.50
86		#3, F-VF	1.50	131	2915D 32¢ FOP (SA), w/spaces, #11111, 10x10, pv/vp, VF-XF		4.50
87		(2), #6&7, VF	3.75	132	3044 1¢ Kestrel, (6), #1111, types 1-3, #2222, #3333, #4444, VF-XF		4.75
88		#7, VF-XF	1.50	133	3054 32¢ Yellow Rose, (2), #1111 & 1122, F-VF		6.50
89	2525	29¢ Tulip, #S1111, roulette type, VF	2.00	134	(2), #2222 & 2333, F-VF		6.50
90		(2), #S1111 & S2222, XF	5.00	135	(2), #3444 & 5555, VF		6.50
91	2529	19¢ Fishing Boat, (5), #A5556, A6667, A7679, A7766, A7779 All XF-S	7.00	136	(2), #5556, XF, #5566, VF		6.50
92		(6), #2529, #A1111, A1112, A1212, A2424, A5555, #2529c, #S1111 All F/VF-XF	9.00	137	(2), #7777 & 8888, VF		7.00
93	2599b	29¢ Liberty, #D1111, F-VF, # clears bottom printing on liner upside down to stamp	4.00	138	3132 (25¢) Jukebox, linerless, #M11111, VF-XF		2.00
94	2602	10¢ E&S,(4),#A33333, A33335, A34424, A34426, XF	5.00	139	3133 32¢ FOP linerless, #M11111, VF		4.00
95		#A33334, S	27.00	140	3208 (25¢) Diner, #S11111, XF		1.25
96		(6), #A43324, A43325, A43334, A43335, A43426, A43326, XF	6.50	141	3208A (25¢) Diner S/A, #22222, S, with round shoulder die cuts		39.00
97		(4), #A88889, A89999, A99998, A99999, XF	5.00	142	3228 (10¢) Handle Bar. #221, VF, rare square shoulder die cuts, has green bottom back #9780 @ position 4		45.00
98		(4), #A1211101010, A1411101011, A1412111110, A1412111111, XF	5.00	143	3265 (33¢) H Hats (SA), #2222, VF		1.75
99	2605	23¢ Presorted Flag, (2), #A112 & A212, XF	4.50	144	(2), #2222 & 3333, VF		6.50
100	2606	23¢ USA Flag, (2), #A2222 & #2607, #1111, VF-XF	4.75	145	3266 (33¢)H Hat (SA)w/spaces, #1111, VF		5.50
101		(4), #2606, #A1111, A2222, A3333, #2607, #11111, All VF	7.00	146	3281 33¢ FOC, (2), #3333 & 3433, VF		6.50
102	2609	29¢ FOWH, (3), #3,7,8, VF- XF	4.75	147	(2), #1111A & 2222A, VF		6.50
103		(6), #7,8,10,11,14,15, VF-XF	9.00	148	(2), #3333A & 4444A, VF		6.50
104		(6), #1-6, VF	9.00	149	(2), #5555A & 6666A, F-VF		6.50
105	2888	(25¢) G Flag, Blue backgrnd, #S11111, VF	1.25	150	(2), #7777A & 8888A, VF		6.50
106	2890	Blue G Flag, (2), #A1111 & A1112, VF	5.50	151	3631 37¢ Waving Flag, #S1111, VF, small holes, has bottom pink back #1930 @ position 4		3.00
107		(2), #A1113 & A1211, XF	6.50	152	3693 (5¢) Sea Coast, (2), #B111, #3864, #S1111, both VF		1.00
108		(2), #A1311 & A1313, VF	5.50	153	3769 (10¢) Lion, #S11111, XF, bottom pink #20C0 @ pos 2, middle 0 is mis-formed, large holes		1.50
109		(2), #A1314 & A1324, XF	6.50	154	3829 37¢ Egret S/A, (2), #V3212 & V3222, VF		6.50
110		(2), #A1417 & A2211, VF	6.00	155	3892A 37¢ Egret S/A, (2), #P11111 & P33333, VF		6.50
111		(2), #A2212 & A2213, VF-XF	5.50	156	4002 24¢ Buckeye, #V11111, pv/vp, VF		1.50
112		(2), #A2313 & A3113, XF	5.50	157	4672 1¢ Bobcat S/A with spaces, #P1111, VF-XF		1.00
113		(2), #A3323 & A3324, XF	5.50	158	3801b (25¢) Eagle, strips of 25 with backing paper bent as mailed from USPS, face = \$45.50, PS-3s or singles can be found		34.00
114		(2), #A3436 & A5327, XF	5.50	159	(48) All Diff. (47),S-4 of transportations + (1) Tulip, NO #s face \$20.64		14.50
115	2892	Red G Flag, (2), # S1111 & S2222, XF, roulette type	6.00	160	CVP31 29¢ Variable Rate Shield, #1, old font dull gum, VF-XF		4.00
116	2904A	(5¢) Mountains, #V222222, VF-XF	2.00	161	Variable Rate, (25), S-5, NO #s, all values...		52.50
117	(2)	#2911, (25¢) Jukebox #212222, #3208, (25¢)Diner #S11111, XF	4.75				
118	2913	32¢ FOP,(2), #11111 & 22221, VF	7.00				
119		(2), #33333 & 44444, VF	6.00				

# ... PNC<sup>3</sup> Autumn Auction # 49 ...

Joe Sedivy, auctioneer

Lot #	Item	Description	Min. Bid	Lot #	Item	Description	Min. Bid
		...1¢-25¢, old font, dull gum, F-XF, face value \$16.25		177	<b>PS-9</b> , #4, VF, line XF, gap 3L, type IIa		\$60.00
162	CVP31a	<b>29¢</b> Variable Rate Shield, #1, old font, shiny gum, VF-XF	\$4.00	178	<b>PS-10</b> , #4, F-VF, line VF, gap 4-1/16 L, type I paper, not in price list		90.00
163	CVP31b	<b>20¢</b> Variable Rate Shield, #1, new font, dull gum, XF, smooth tagging	25.00	179	<b>PS-11</b> , #5, XF, line S, gap 5L, type I paper, price list \$90.00		22.00
164		<b>29¢</b> Variable Rate Shield #1, new font, dull gum, smooth tagging VF-XF	22.00	180	<b>PS-10</b> , #5, VF, line VF, gap 5L		25.00
165	CVP32	<b>19¢</b> Variable Rate Shield, #A11, XF	12.00	181	<b>PS-12</b> , #6, XF, line S, gap 5-1/8L, type I paper, price list \$90.00		22.00
166		<b>SAME</b> but value printed is 29¢	4.00	182	1904a <b>10.9¢</b> Hansom PC PS-10 #1, F-VF bit low, line VF, gap 3R, type I paper, price list \$125.00		30.00
167	CVP33	<b>32¢</b> Variable Rate Shield, #11, VF-XF	4.00	183	<b>PS-11</b> , #1, F-VF bit low, line VF-XF, gap 4R, type I paper, price list \$91.00		18.00
<b>D. == Mint Plate # Strips of 6 or Longer ==</b>							
168	1891	<b>18¢</b> Flag, PS-7, #6, VF-XF ( <i>image below</i> )	2,000.00	184	1906a <b>17¢</b> Auto PC, PS-10, #3A, VF, line S, gap 4R		4.00
169	1900a	<b>5.2¢</b> Sleigh, PS-10, #1, gap 5L, XF, line XF-S, price list \$70.00	35.00	185	2005 <b>20¢</b> Consumer, PS-7, #3, F-VF low # just touches, line S		4.00
170		<b>PS-10</b> , #1, gap 5R, VF-XF, line VF, price list \$18.20, but could be a new find, a double bar break in the top line, not listed ( <i>image below</i> )	18.00	186	<b>PS-7</b> , #4, VF-XF, line VF-XF		16.00
171		<b>PS-11</b> , #1, gap 4-7/8R, XF, line VF, price list for gap 5R \$18.20	14.00	187	2123a <b>3.4¢</b> School Bus PC, PS-8, #1, F-VF, line F-VF, gap 1-7/8R		8.00
172		<b>PS-10</b> , #2, gap 5L, XF, line XF, price list \$70.00	35.00	188	2124a <b>4.9¢</b> Buckboard PC, PS-8, #5, VF, line F-VF, gap 4L, price list \$525.00		65.00
173		<b>PS-11</b> , #2, gap 5R, VF-XF, line VF, price list for PS-10 is \$18.20, Could be a new find top line has double bar break, not listed	18.00	189	<b>PS-8</b> , #6, VF, line F-VF, gap 4L, price list \$450.00		65.00
174		<b>PS-7</b> , #3, gap 3L, VF-XF, line VF-XF, price list for PS-8 is \$33.50	16.00	190	<b>PS-8</b> , #6, VF-XF, line VF, gap 3R, from row 2 of web, has double bar break in top line only, price list \$490.00		200.00
175		<b>PS-9</b> , #3, gap 3L, VF-XF, line XF-S, price list for PS-8 is \$33.50	18.00	191	<b>PS-8</b> , #6, XF, line XF, gap 2-7/8R, from row 4 of mat shows double bar break in both top & bottom lines price sheet \$490.00		200.00
176	1903a	<b>9.3¢</b> MailWagon PC, PS-8, #4, F-VF, line F-VF, gap 1-1/2R, price list @ \$325.00 ( <i>image below</i> )	50.00	192	2523 <b>29¢</b> Rushmore, PS-7, #8, S		4.00

*lots continue next page →→→*

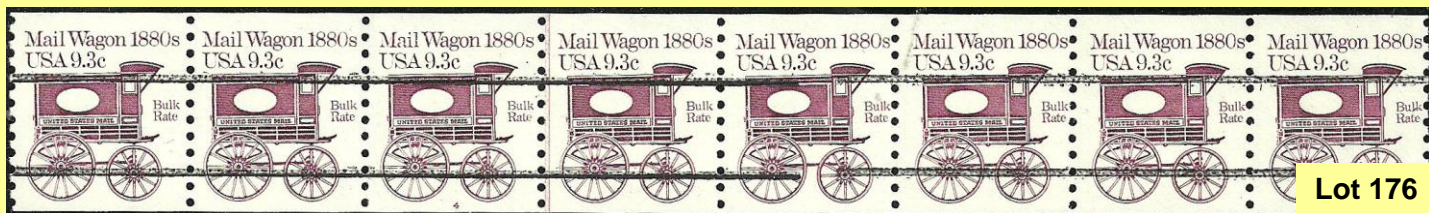


**Lot 168**



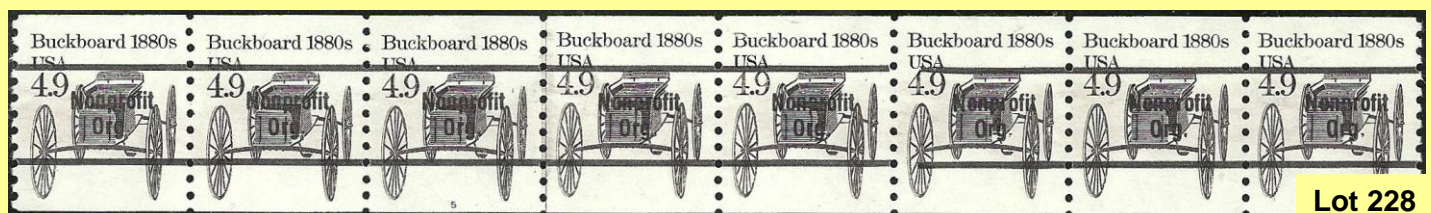
**Lot 170**

(darkened blur @L is artifact of picture, not on coil)



**Lot 176**

Lot #	Item	Description	Min. Bid	Lot #	Item	Description	Min. Bid
<b>D. (Con't) Mint Plate # Strips of 6 or Longer (con't)</b>							
193	2799a	<b>29¢</b> Christmas, PS-8, #V111111, XF-S	\$3.00			...top, no trace @ bottom	
194	2911	<b>(25¢)</b> Juke Box, PS-9, #111111, XF	4.25	221		<b>PS-5</b> , #6, F-VF vert, line F-VF, # 80% top	\$3.25
195	2913	<b>32¢</b> FOP WAG PS7, #22222, shiny gum, XF	2.50			20% bottom	
196	2915A	<b>32¢</b> FOP S/A, PS-7, #89899, F-VF, 10x10, pv/vp has red dot above "A" @2L	100.00	222	1906a	<b>17¢</b> Auto PC, PS-3, #3B, VF vert, line XF, # 5% top 95% bottom	2.50
197		<b>PS-7</b> , #99999, 11x10, pp/vv, F-VF	3.75	223		<b>PS-5</b> , #5BA, F-VF vert, line XF, #5% top, 95% bottom, line gap	20.00
198		<b>PS-7</b> , #77777A, 10x10, vp/pv, F-VF	40.00	224	1907	<b>18¢</b> Surrey, PS-5, #15, VF-XF vert, line VF, # 95% bottom but no trace at top	7.00
199		<b>PS-7</b> , #78777A, 10x10, pv/vp, XF-S	13.00	225	2132	<b>12¢</b> Steamer, (2), PS-5, #1, F-VF vert, line F does not touch pair of strips from first two rows of web one without # other # 100% top and no trace of # at bottom	10.00
200	3017A	<b>32¢</b> Santa & Children, PS-8, #V1111, VF	18.00	226	3612	<b>5¢</b> Toleware, PS-7, #S1111111, VF-XF vert, #100% bottom 40% of second # at top.	5.00
201	3132	<b>(25¢)</b> JukeBox Linerless, PS7, #M11111, XF	4.75	<b>H. === Constant Plate &amp; Mat Varieties ===</b>			
202		<b>SAME</b>	5.00	227	1898A	<b>4¢</b> Stage, PS-7, #1, F-VF, line VF, gouge in window @1R next to the door, this is a new find see R. Nazar book, this is only known on plate #2	5.00
203	3305a	<b>33¢</b> Berries, Horiz., PS-9, #B2222, VF-XF	4.50	228	2124a	<b>4.9¢</b> Buckboard PC, PS-8, #5, XF, line XF, white dot in top line,(bullet hole) @1L, New Find, has green ink transfer on gum on 6 stamps, looks like from 8.3¢ Ambulance, gap 2R (image below)	6.00
204	3475	<b>21¢</b> Bison, PS-6, #V1111, VF, S/E @ left from start of roll	1.25	229		<b>PS-8</b> , #6, VF, line XF, gap 2R, has white dot in top line At 1L (bullet hole), New Find, has ink transfer on gum of 5 stamps looks like from printing process	6.00
205	3641a	<b>37¢</b> Antique Toys, PS-8, # B12222, VF	3.50	230	2125a	<b>5.5¢</b> Star Truck P/C, PS-5, #1, F-VF, has skid mark behind left front tire @2R, New Find, this is only reported on 2125 in front of left back tire	10.00
206		<b>PS-9</b> , #B12222, VF	4.00	231	2128a	<b>8.3¢</b> Ambulance P/C, PS-5, #1, XF, line VF-XF, gap 1L, has 2nd break in top line just left of gap, New Find	4.00
207	3967	<b>(39¢)</b> Liberty & Flag, PS-6, #S1111, small holes, VF bottom pink B# 2060 on position 6, 2 short perfs @Top R	3.00	232		<b>PS-5</b> , #2, XF, line F-VF, gap 2L,missing period after "RT" @ 2L and what looks like a period instead of dash in CAR-RT @2L	4.00
208	O159	<b>37¢</b> Official, PS-7, #S111, XF	5.00	233	2131	<b>11¢</b> Stutz, PS-5, #3, VF-XF, line XF, broken fender @ 1L	10.00
209	TD111	<b>S-6</b> Brown For Testing Only Strip, NO#, F-VF low	9.00	234	2259	<b>13.2¢</b> Coal Car, PS-5 #2, F-VF, falling coal @2R	3.00
<b>E. ===== Imperfs =====</b>				235	2603	<b>(10¢)</b> E&S, PS-5, #22222, XF, with extra blue 1, untagged, low gloss gum	7.00
210	1519	<b>10¢</b> Crossed Flags, S-10, XF, no gum, has a staple hole in stamp #1 & 6	5.00				
211	1895d	<b>20¢</b> Flag, PS-7, #5, VF, bit high, looks Imperf but has blind perfs	60.00				
212		<b>PS-6</b> , P#-8, XF, is total imperf	100.00				
213		<b>PS-8</b> , #9, S	100.00				
214	3632Af	<b>PS-7</b> , #10, XF	120.00				
215		<b>37¢</b> Waving Flag, has 2003 year date, S-7, NO #, S	175.00				
<b>F. ===== Mis-Perf. =====</b>							
216	3829	<b>37¢</b> Egret, PS-8, #V1111, Embedded Bell die cut, die cuts are 40 % shifted to left putting the die cuts thru the back of egret head, S centering for Horiz of strip	375.00				
217	3785	<b>(5¢)</b> Sea Coast, S-2, NO#, VF Horiz. Die cuts shifted 45%. From new find made at Stamp Show in Aug. die cut four sides	30.00				
<b>G. ===== Mis-cut =====</b>							
218	1906	<b>17¢</b> Auto, PS-7, #3, XF vert, line XF, # 100% top	20.00				
219		<b>PS-7</b> , #4, VF-XF vert, line XF, # 100% top	20.00				
220		<b>PS-5</b> , #5, F-VF vert, line F-VF, # 95% ...	3.50				



Lot #	Item	Description	Min. Bid	Lot #	Item	Description	Min. Bid
236	2915A	<b>32¢</b> FOP, S/A, PS-5, #87888, 11x10, pp/vv, VF, with bullet hole in post. Not listed for this # in PNC3 price list	\$30.00			...back #01000	
237		<b>PS-5</b> , #88888, VF, 11x10, pp/vv, has red dot in "2" of 32¢ on number stamp. Not listed in PNC3 price list.	35.00				
238		<b>PS-5</b> , #9.9999, 11x10, pp/vv, XF, dot between 9s	50.00				
<b>I. ===== Tagging Varieties =====</b>				<b>K. ===== Other Varieties =====</b>			
239	1906	<b>17¢</b> Auto PS5 #3, F-VF inc. line, type II paper, vertical bar break 14mm wide@ 1-3/4L	8.00	264	1900a	<b>5.2¢</b> Sleigh P/C, PS-5, #1, VF, line S, wavy precancel lines	\$3.50
240		<b>PS-5</b> , #4, VF, line F-VF, type II paper, tagging looks like a snow flurry and there is a clip top tagging break @2L	20.00	265	2280a	<b>25¢</b> Yosemite, PS-5, #2, XF, foot of plate #2 missing	5.00
241	2115b	<b>25¢</b> Flag, PS-5, #18, VF-XF, from "D" press tagging is wide and tall	30.00	266	2464a	<b>23¢</b> Lunch W., PS-5, #3, VF, mottled tag, dull gum, offset on gum shifted nearly 50%	5.00
242	2225a	<b>1¢</b> Omni, PS-5, #3, XF, untagged error, shiny gum	8.00	267	2466b	<b>32¢</b> Ferryboat, PS-5, #5, S, Bronx Blue	65.00
243		<b>SAME</b>	8.00	268	2523	<b>29¢</b> Rushmore, S-5, NO#, VF, middle stamp "29USA" is 90% red and some red on mountain also	5.00
244	2257b	<b>10¢</b> Canal Boat, PS-5, #4, XF, looks untagged, but tagging flecks visible	48.00	269	2523c	<b>29¢</b> Rushmore, PS-7, #7, XF-S, Toledo Brown color error	85.00
245	2257c	<b>10¢</b> Canal Boat #4 VF-XF, tagging gap @1L	2.00	270		<b>PS-7</b> , #7, VF	90.00
246	2529b	<b>19¢</b> Fishing Boat, PS-5, #A5555, VF-XF, untagged	3.00	271		<b>Full</b> Roll of 100, #7, VF-XF	400.00
247	2603b	<b>(10¢)</b> E&S, PS-5, #11111, tagged error, XF	4.50	272	2603	<b>(10¢)</b> E&S PS-7, #22222, S, has extra blue 1	4.50
248	3785b	<b>(5¢)</b> Sea Coast, PS-5, #P2222, XF, Hvy tagged error	60.00	273	2904B	<b>(5¢)</b> Mountains, PS-5, #1111, VF, die cut shift at stamps 1&2, both vertical & horizontal about 3/4mm	10.00
249	4141v	<b>26¢</b> Panther, PS-5, #S1111, VF, solid tagging	50.00	274	3044A	<b>1¢</b> Kestrel, PS-6, #3333, YM CB, VF-XF, seam line on left side of 1R	2.00
<b>J. ===== # ON # =====</b>				275	2053	<b>20¢</b> Blue Jay, PS-5, #S1111, cobra die cut bottom, XF	10.00
250	2891	<b>(32¢)</b> Red "G", PS-7, #S11111, VF-XF, bottom purple back #0670	17.00	276	3968	<b>(39¢)</b> Liberty, PS-7, #V1111, XF, thimble die cut bottom	7.00
251	2914	<b>32¢</b> FOP WAG, PS-5, #S11111, XF, bottom black #02660, perfs bent between stamps 1&2	2.50	277		<b>PS-7</b> , #V1111, XF, knoll die cut bottom	7.00
252	3207A	<b>(5¢)</b> Wetlands, w/spaces/round die cuts, PS-5, #3333, VF, top aqua back #0740	5.00	278	4140	<b>17¢</b> Big Horn, PS-7, #S11111111, VF, white jaw line	6.50
253	3228	<b>(10¢)</b> Bike, w/spaces, PS-7, #111, XF-S, bottom aqua #5380	5.50	279	CVP31	<b>Variable</b> Rate Shield, S3, NO#, XF-S, 1st stamp 24c, 2nd stamp --47, 3rd stamps 25c, old font dull gum	20.00
254		<b>PS-7</b> , #333, XF-S, top aqua back #0800	5.50	<b>L. ===== FIRST DAY CANCELS =====</b>			
255	3229	<b>(10¢)</b> Bike, PS-7, #S111, XF-S, top pink back #03360	3.50	280	2281	<b>25¢</b> Bee, PS-3, #2, on Art Craft unaddressed FDC, VF-XF	5.00
256	3757	<b>1¢</b> Tiffany, (2), PS-5, #S11111, VF-XF, top pink #0550 & 0620	1.00	281	(6)	<b>Diff</b> on one cover for FD of issue of S/A coils #2902b, 2904A, 2906, #2910, 2912A, 2915B, all with plate #s, cachet by Lyle Boardman, there is a note on the sleeve stating from first rolls opened at event	12.00
257	4131	<b>(41¢)</b> Flag, PS-5, #S1111, VF, bottom pink #1380	6.50	282	3132	<b>(25¢)</b> Juke Box, PS-1, #M11111 + no# single of 3133 tied to First Day ceremony program card from USPS, XF-S	4.00
258	4385	<b>(10¢)</b> Banner, PS-5, #S111, VF, bottom pink #030	4.50	283	4672	<b>1¢</b> Bobcat, PS-5, #P1111, tied on backing paper to FDC unaddressed and with cachet designed by Lyle Boardman, VF-XF	15.00
259	4495	<b>(5¢)</b> Art Deco Bird, PS-5, #P1111, S, top black #3990	4.50	<b>M. ===== OTHER COVERS =====</b>			
260		<b>PS-5</b> , #P2222, XF, top black #6390	4.75	284	2523	<b>29¢</b> Rushmore, PS-3, #1 on middle stamp tied to #10 white commercial cover by BMC of Saint Paul MN, mailed by Falcon Heights Medical Supply Co., XF	75¢
261		<b>PS-5</b> , #P1111, S, top black back#760	8.00				
262	4672	<b>1¢</b> Bobcat, PS-5, #P1111, VF, top black #120 [3mm tall]	3.50				
263	4749	<b>46¢</b> Star, PS-5, #S111, VF, bottom black...	6.00				

lots continue next page →→→

Lot #	Item	Description	Min. Bid	Lot #	Item	Description	Min. Bid
<b>M. Con't ----- OTHER COVERS (con't) -----</b>				...tagged error, perfs cut short @L but there			
285	2915A	<b>32¢</b> FOP, PS-1 #87898, 11x10, pp/vv, + NO# single of 2464 tied to #10 white cover by BMC of Oakland CA, 18 MAR 1997 VF, mailed by Steve Neishi Optometrist	\$1.00	310		<b>#33333</b> VF-XF, light tagged error, full perfs	\$5.00
286		<b>PS-1</b> , #89898, 10x10, pv/vp, tied to #10 white cover by BMC of Chattanooga TN 6 FEB 1998 of Emergency Animal Clinic	1.00	311	2281	<b>25¢</b> Bee, #2, VF, seam line @L	5.00
287	3208A	<b>(25¢)</b> Diner, PS-1, #2222, on white 6-¾ window cover of Republican National Committee, XF	4.50	312	2466b	<b>32¢</b> Ferry Boat, #5, Bronx Blue, XF	60.00
288	3632	<b>37¢</b> Waving Flag, PS-1, #333, tied to event cover by show cancel black dated Dec 17, 2003. Event was first day for 172nd Airlift Wing for Mississippi Air Nat'l Guard, with cachet	5.50	313	2523d	<b>29¢</b> Rushmore, (2), #2 & 6, F-VF, Lenz Tagging, part of #6 covered by cancel	150.00
<b>N. ===== Used Singles =====</b>				314	2607a	<b>23¢</b> USA Flag, #1111, VF-XF, tagged error, full perfs	40.00
289	1891	<b>18¢</b> Flag, #6, VF	275.00	315		<b>SAME</b>	40.00
290	1895	<b>20¢</b> Flag, #9, VF-XF, tagging shift 50%	5.00	316	2609	<b>29¢</b> FOW, (3), #5,9,14, VF-XF	1.00
291		<b>#14</b> , VF-XF, tagging shift 50%	5.00	317	2882	<b>(32¢)</b> Black G Flag, (3), #1111, all on piece, F-VF	1.00
292		<b>#14</b> , VF-XF, "Q" type ( <i>image below</i> )	10.00	318	2890	<b>(32¢)</b> Blue G Flag, (65), mixed #s includes A3433, A2213, A1212, A2214 and others overall F-VF, all on piece	10.00
293		<b>SAME</b>	10.00	319	2891	<b>(32¢)</b> Red G Flag, (9), (8) used singles and (1) PS-3, all on piece, VF	1.00
294		<b>#2</b> , VF, untagged error, unlisted	250.00	320	2892	<b>(32¢)</b> Red G Flag, (21), #S1111 & S2222, F-VF, on piece	2.00
295		<b>SAME</b>	250.00	321	2904A	<b>(5¢)</b> Mountains, #333342, 13x12 pp/vv, F-VF, Rare Item	495.00
296		<b>SAME</b> , but with PMC, VF-XF, one close perf top left	300.00	322	2904B	<b>(5¢)</b> Mountains, #1111, XF, 9x10 vv/pp	750.00
297	1900	<b>5.2¢</b> Sleigh, #3, XF	65.00	323	2915A	<b>32¢</b> FOP S/A, #88898, 10x11 vv/pp, F-VF, light BMC	700.00
298		<b>#5</b> , XF	65.00	324		<b>#13231A</b> , 10x10, vp/pv, F-VF, rare die cut ( <i>image below</i> )	270.00
299	1903	<b>9.3¢</b> Mail W., #5, F-VF	95.00	325		<b>#78777A</b> , 10x10, pv/vp, F-VF, light BMC	2.00
300	1904a	<b>10.9¢</b> Hansom P/C, #3, VF	40.00	326	3208A	<b>(25¢)</b> Diner, #11111, VF-XF, round die cuts	6.00
301		<b>#4</b> , VF	40.00	327	3263	<b>22¢</b> Uncle Sam, (2), #1111, 10x10, pv/vp, both A & C incision die cut	3.00
302	1908b	<b>20¢</b> Pumper, #5, VF, untagged error, BMC	500.00	328	3785b	<b>(5¢)</b> Seacoast, #P2222, tagged error, XF	15.00
303		<b>#5</b> , untagged error, VF, PMC ( <i>image below</i> )	700.00	329		<b>SAME</b> , but VF centering	15.00
304		<b>#6</b> , untagged error, VF, BMC	500.00	330		<b>SAME</b> , but VF-XF centering	38.00
305		<b>#6</b> , untagged error, F-VF, PMC	700.00	331	3829	<b>37¢</b> Egret, #V3211, VF-XF, vp/pv, only 45 reported used copies	200.00
306		<b>#8</b> , untagged error, VF, BMC	500.00	332	(100)	<b>Mixed</b> used PNCs on piece, including fractional values, F-S, I did see a few PMCs here	10.00
307		<b>#8</b> , untagged error, VF, PMC	700.00	<b>O. ===== USED PS-3 =====</b>			
308	2149a	<b>18¢</b> Washington P/C, #33333, VF-XF, (2) a regular and a pink face copy so you can see the difference, pink face has short perf @R	3.00	333	1903	<b>9.3¢</b> Mail W. (2), #1 & 3, VF-XF, lines VF, full perfs, BMC	8.00
309	2149e	<b>18¢</b> Wash. P/C, #33333, VF-XF, light ...	3.00	334	1903a	<b>9.3¢</b> Mail W. P/C, (6), #1-6, VF-XF, lines F/VF-XF, full perfs all very Lt black cancels	25.00



Lot 292

Lot 303



Lot 324



## ... PNC<sup>3</sup> Autumn Auction # 49

Lot #	Item	Description	Min. Bid
<b>O. Con't</b> ===== <b>USED PS-3</b> ===== (con't)			
335	1904	<b>10.9¢</b> Hansom, #1, XF-S, line XF, full perfs, light black cancel	\$7.50
336	(3)	<b>2124</b> [2] 4.9¢ Buckboard, #3&4, #2133a, [1] 12.5¢ Pushcart, #2, all full perfs, light black roller cancels, XF, lines XF	1.75
<b>P.</b> ===== <b>Miscellaneous</b> =====			
337	2813a	<b>29¢</b> Sunrise love booklet, XF, rare #B222-6, type A liner possible plate crack on stamps 10 & 11	310.00
338	(25)	<b>Diff.</b> used New Zealand stamps	1.00
339	(15)	<b>Diff.</b> Poland Gen. Gov. German Occupation, #N68, N69, N71, used #NO26-36 unused, VF	1.00
<b>Q.</b> ===== <b>Club Donations</b> =====			
340	(3)	<b>PS-3s</b> , [1] #1891, #5, [1] #1895, #5, [1] 1895a, #9, all VF	2.00
341	2115	<b>22¢ Flag</b> , (3), #2,5,8, VF, #8 with red tip on dome, all PS-3	2.00
342	(2)	<b>#2115</b> , 22¢ Flag, #10, #2115a, #12, VF both PS-3	1.25
343	2888	<b>(25¢)</b> "G" Flag Blue background, PS-5, #S11111, XF	2.00
344	2891	<b>(32¢)</b> Red "G" Flag XF, #S1111, perf. Type	2.00
345	2892	<b>(32¢)</b> Red "G" Flag, rouletted type, #S2222, XF	2.00
346	2259	<b>13.2¢</b> Coal Car, PS-3, #2, tied to Art Master unaddressed FDC, XF	1.00
347	2261	<b>16.7¢</b> Popcorn W. PS-3, #1, tied to Art Master unaddressed FDC, XF	1.00
348	2902	<b>(5¢)</b> Butte, PS-3 & S-4, #S111, tied to House of Fram unaddressed FDC	1.00
349	(14)	<b>Misc.</b> used PNCs off paper, couple of PS-3 with # on middle stamp, overall F-VF	0.50
****		☞ <u>end of lots</u> ☜	****

🔊 Do you have a question for auctioneer  
☰ Joe Sedivy about a lot? 🖨

Please note that the Thursday, October 31 deadline for bids is for having them in Joe's hands. Accordingly, please submit any questions or requests for scans in a timely manner. (See page 124 for ways to reach Joe.)

<b>Previous Membership Count</b>	<b>535</b>
<b>New Applicants</b>	<b>6</b>
<b>Reinstated</b>	<b>1</b>
<b>PNC<sup>3</sup> Membership Count</b>	<b>542</b>

## Membership

### New Applicants

David J. Lamothe Sr. (2235)  
110 Trumbull Ave  
Plainville, CT 06062  
[djlamothe@snet.net](mailto:djlamothe@snet.net)

Sean Robins (2236)  
537 Arbutus St  
Philadelphia, PA 19119  
[seanrobins@pafamily.net](mailto:seanrobins@pafamily.net)

Michael B. Cooper (2237)  
162 Foster Pl  
Lake Forest, IL 60045  
[AQUAMANMBC@aol.com](mailto:AQUAMANMBC@aol.com)

Kim D. Johnson (2238)  
310 E N 3<sup>rd</sup>  
Georgetown, IL 61846  
[westhome1@aol.com](mailto:westhome1@aol.com)

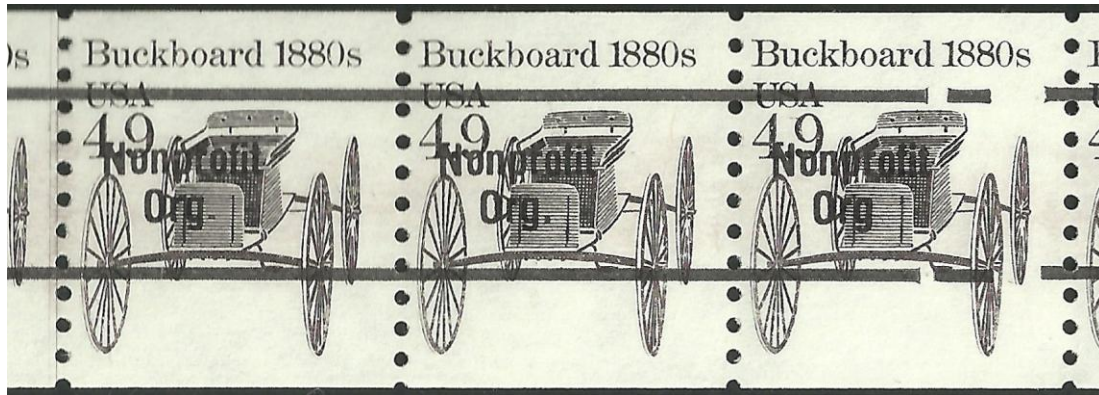
Dave Lowental (2239)  
359 Bear Creek Rd  
Victor, MT 59875  
[MONTANADAVID@aol.com](mailto:MONTANADAVID@aol.com)

Thomas A. Tonozzi (2240)  
511 W St Paul St  
Spring Valley, IL 61362  
[ttonozzi@gmail.com](mailto:ttonozzi@gmail.com)

### Reinstated

Kim Cuniberti (0438)  
P.O. Box 3654  
Danbury, CT 06813  
[kim.cuniberti@coldwellbankermoves.com](mailto:kim.cuniberti@coldwellbankermoves.com)

Names of applicants are published for review. A member who questions the suitability of a prospective member should contact the Membership Committee Chair Michael Conway with the objection ([mjconway@hotmail.com](mailto:mjconway@hotmail.com) or (203)268-5896.) Applicants are accepted as members one month after publication if no objection is made.



←  
(detail from  
Auction lot  
191)

(Auction lot  
217) ↓

**Strips/100 Packaging Update**



Here's an image of the new brown box used for my second shipment (August 2013) of the 3¢ Coffeepot (with PNC S2222) strip of 100 I received from USPS' Stamp Fulfillment Services in Kansas City. It looks less expensive than the white box shown last month.  
— Frank Covey



↑ (detail from  
Auction lot 230)

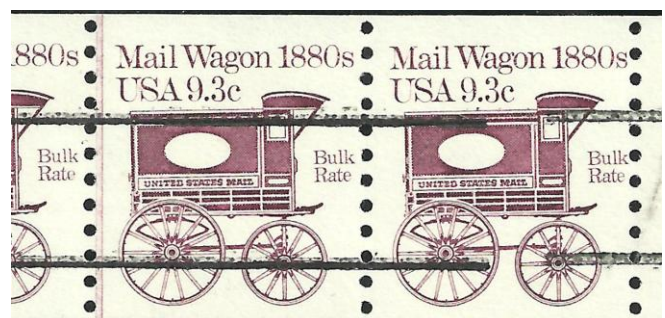
(detail from ↑  
Auction lot 236)

(detail from Auction lot 176) ↓



(from page 123,  
Readers' Forum)

**(5¢) Sea Coast with shifted black ink.** Dan Forgues follows his example on back page of August issue with find of a more-extreme case.



( the entire strip is pictured on page 127)