

Our 27<sup>th</sup> Year

# PNC<sup>3</sup>



# Coil Line

Journal of the PNC<sup>3</sup> [www.pnc3.org](http://www.pnc3.org)  
**Plate Number Coil Collectors Club**  
American Philatelic Society Affiliate # 185

**October 2014**  
Vol. 27, No. 10  
Whole No. 316



▲ New PNC # reason... page 125



▲ Are you looking for these?... page 125



▲ Auction Lot 245 cropped... page 130



◀ Auction Lot 199 cropped... page 129

Bid in the PNC<sup>3</sup>  
Autumn Auction!  
(see pages 126 – 134)

**Bids Deadline - Tuesday, Oct. 28th**



◀ Lot 250 cropped... page 134

◀ Missing from the September cover...page 134



Latest new PNC #... page 123-4

**Also...**  
SESCAL regional meeting **Oct. 18th**... page 124  
PNC FDCs pricing... page 125  
(5¢) Art Deco Bird P3333 update... page 135

# Coil Line

Journal of the Plate Number  
Coil Collectors Club (PNC<sup>3</sup>)

Published by: PNC<sup>3</sup>  
ISSN: 1931-5112



**Editor:** Ronald Blanks  
[coilineditor@yahoo.com](mailto:coilineditor@yahoo.com)

**Print Edition Mailings:** Brian and Cory Snippen  
[snippenb@gmail.com](mailto:snippenb@gmail.com)

**Electronic Edition Emails:** Frank Covey  
[ecoilline@comcast.net](mailto:ecoilline@comcast.net)

**Scott #2458 plate # 22**  
(issued May 25, 1994)

## PNC<sup>3</sup> Contacts

**PNC<sup>3</sup> Website** [www.pnc3.org](http://www.pnc3.org)  
Allan Clapp, Webmaster  
email: [webmaster@pnc3.org](mailto:webmaster@pnc3.org)

(For *Coil Line*-related matters, please  
see column at left for appropriate contact.)

### Advertising Rates (one-time)

Full Page	\$ 100.00	Eighth Page	\$ 20.00
Half Page	\$ 80.00	Business Card	\$ 20.00
Third Page	\$ 65.00	Back Cover	Add \$ 50.00
Quarter Page	\$ 45.00	Inside Cover	Add \$ 25.00
Sixth Page	\$ 35.00	Color, full page	Add \$ 100.00

(For Color Ads, Electronic Version only, Add \$25.00)

A check or money order, made out to **PNC<sup>3</sup>**, must accompany camera ready ad. Advertising copy must be submitted by the 1st of the previous month prior to the publication date. Please send all copy to Ronald Blanks, Coil Line Editor, PO Box 531, Windsor, VA 23487.

The Classified Ad rates are six cents a word per issue, with a minimum of \$3.00 per individual ad. (Two 50-word ads per year per member are available at no charge. There is a 10¢ per word cost for words over 50.)

All material, including articles submitted, will be edited and formatted for inclusion in **Coil Line**, and must be received by the 1st of the month prior to publication.

**Coil Line reserves the right to edit copy as necessary.**

**Coil Line** is published monthly and as a member benefit is sent electronically with annual dues of \$16.00. Printed version of **Coil Line** is also available. To U.S. addresses, to receive printed version add \$14.00 for Bulk Mailing; add \$22.00 for First Class Mailing. To Non-USA addresses, add \$27.00 for mailing. Past print issues of **Coil Line** available at \$2.50 per copy (quantities limited).

All material is copyright 2014. All rights reserved. Material in this publication may be copied or reproduced with acknowledgment to **Coil Line**. Opinions expressed by the authors and writers are their own, and do not necessarily reflect those of the editor, publisher, or membership of the Plate Number Coil Collectors Club.

All content matters, letters to the Editor, and advertising questions should be sent to **Coil Line**, c/o Ronald Blanks, PO Box 531, Windsor, VA 23487. Phone 757-478-8719; email: [coilineditor@yahoo.com](mailto:coilineditor@yahoo.com).  
For mail delivery problems, contact the mailer below.

**Postal mailings prepared by:** Brian Snippen, PO Box 5542, Albuquerque, New Mexico 87185-5542. Email: [snippenb@gmail.com](mailto:snippenb@gmail.com). Phone: 505-404-1624.

Mailed from Zip Code 87185 on or near September 29, 2014.

## Elected Officers

Robert Thompson, **President**, 12431 Golden Thistle, Houston, TX 77058. email: [rthompson@pncvarieties.com](mailto:rthompson@pncvarieties.com) 713-397-1772

Michael Mules, **Vice President**, PO Box 267, Mukwonago, WI 53149. email: [pnc5dealer@wi.rr.com](mailto:pnc5dealer@wi.rr.com) 414-234-9867

Richard L. Beecher, **Secretary**, PO Box 4790, Blaine, WA 98231-4790. email: [richardlater@aol.com](mailto:richardlater@aol.com) 604-467-8700

John Himes, **Treasurer**, PO Box 453, Cypress, CA 90630-0453. email: [johnwhimes@yahoo.com](mailto:johnwhimes@yahoo.com) 714-826-8552

Gene Trinks, **Past President**, 16415 W. Desert Wren Ct, Surprise, AZ 85374. email: [gctrinks@cox.net](mailto:gctrinks@cox.net) 623-322-4619

Jill Ambrose, **At Large**, PO Box 54622, Cincinnati, OH 45254-0622. email: [jillambrose@zoomtown.com](mailto:jillambrose@zoomtown.com) 513-231-4208

Melvyn Borofsky, **At Large**, 101 West Sterling Way, Leesburg, FL 34788-2781. email: [melborofsky@comcast.net](mailto:melborofsky@comcast.net) 352-483-1408

**PNC<sup>3</sup> Catalog Committee:** Frank Covey, Andy Jakes, Jill Ambrose, Gene Trinks, Peter Tukker  
**PNC<sup>3</sup> auctioneer:** Joe Sedivy

## Coil Line Production

**editor:** Ronald Blanks  
**electronic version producer:** Jill Ambrose  
**senior consultant:** Gene Trinks  
**technical consultant:** Alan Thomson  
**writers:**

Frank Covey, Doug Iams, Gene Trinks, Rob Washburn  
**contributing writers:**

Dan Forgues, John Himes, Richard Nazar, Bob Rabinowitz, Mark Schultz, Robert E. Thompson  
**proofreader:** Special thanks to Doug Iams (October)  
**printing:** State Wide Printing - Albuquerque NM  
**printed mailings:** Brian and Cory Snippen  
**electronic mailings:** Frank Covey  
**subscriptions:** Richard Beecher

## President's Message

### from the PNC<sup>3</sup> president ...

We had a great PNC<sup>3</sup> annual meeting at the 2014 StampShow in Hartford, Connecticut. There was a great turnout for the regular meeting, as well as a large number of members that stopped by to sign in at the booth. I finally got to meet collectors that I've known for almost 30 years, but have never met face to face. It was great seeing all of the familiar faces as well. I also want to thank all those that donated the door prizes that were handed out during the regular club meeting.

We also held the annual board meeting earlier that same day. One of the items that came out of the board meeting was the need for some of the committee chairs and committee support. I'm looking for volunteers/chairs specifically for the Historian, Awards/Exhibits and Estate Advisory Committees. Some of the committees don't take up much time, but there is usually the need for something every month or so.

Tom McFarland has agreed to chair the new "World Stamp Show-NY 2016" Committee. This will be the international show that will be held in New York City. The international shows cannot be held any more often than every ten years. The last international show in the United States was in Washington, D.C. in 2006. PNC<sup>3</sup> will have a booth at the show and we need volunteers to help man the table. The show will run from Saturday May 28 to Saturday June 4, 2016. So please get in contact with Tom if you are able to help. Even if it is only for a few hours, it can be a big help.

The other news from the board meeting is that the board voted to reduce the cost of the annual membership for 2015 to \$14. This includes twelve issues of the electronic version of *Coil Line*. This is down from the current dues of \$16. There was no change in the price for the printed version of *Coil Line*.

Member Rob Washburn had a nice PNC exhibit called "Usages of U.S. Coils Issued in the 1990s." It is a 160-page exhibit over ten frames. It was awarded a Vermeil and the Plate Number Coil Collectors Club Presidents Award. Congratulations, Rob.

— Robert E. Thompson



## Welcome!



If you are a new reader to *Coil Line*, PNC<sup>3</sup> is in our 27<sup>th</sup> year. We are a community of stamp collectors specializing in plate numbered coil issues of the USA. The first PNCs were issued in 1981 and, in February 1988, a network of PNC specialists founded our club. *Coil Line* was launched in May, 1988 and serves (along with other club literature) to inform collectors on the many aspects of PNCs. Studies include scarce numbers, varieties, printing methods, market values, PNCs on mail, and more. Thank you for visiting, and we hope you'll join us!

### 3<sup>rd</sup> New PNC # for Paper Change



**"V11112",  
new # found  
in late  
August.**  
(Images  
courtesy of  
John Himes.)



On the heels of new plate numbers for two existing PNCs in recent months comes a third issue with a new number. The (25¢) Spectrum Eagle coil is now known with "V11112" (V for Avery, the initial supplier). PNC<sup>3</sup> member Mark Schultz discovered the new number in a relative's home in late August.

Interestingly, a strong hint that a new number would be likely was available earlier, informed by the history of the other two new numbers (some of which is shared for the first time in related articles in this issue). The (5¢) Art Deco Bird non-profit presort coil is now known with P3333 (in addition to P2222, P1111). The 1¢ Bobcat self-adhesive coil was recently found with P2222 (in addition to P1111). (See related stories.)

Why the second number known for (25¢) Spectrum Eagles is not "V22222" is the subject of much speculation at time of writing. In July 2013, CCL Industries acquired Avery's stamp-making operation, over a year before the V11112 discovery.

## PNC<sup>3</sup> Regional Meetings

### SESCAL – Los Angeles October 18, 2014

Los Angeles-area PNC<sup>3</sup> club members will be meeting at **12:00 noon on Saturday**, October 18, 2014 at the SESCAL 2014 Stamp Exhibition. The meeting will be held in the **Newport C room** of the hotel. Visitors to the meeting are always welcome. Admission is free, and a special parking rate of \$8.00 is available to show attendees. SESCAL will be taking place at **The Hilton Los Angeles Airport Hotel**, 5711 W. Century Blvd., Los Angeles, CA 90045, phone (310) 410-4000. The Exhibition will be held Friday through Sunday, October 17-19. (See September's issue (page 112) for meeting plans.)

#### Want to Sponsor a Regional Meeting?

Contact Tony Bruno for suggestions. He can put you in contact with others who have taken on the task. Several members have made it a regular habit of promoting meetings in their area.

#### Regional Meeting Chairman

Tony Bruno, PO Box 624, East Lyme,  
CT 06333-0624; email, [tbbee@aol.com](mailto:tbbee@aol.com)

(PNC<sup>3</sup> meeting notices in this column are free. Please submit details to the Editor 3 months before the meeting.)

## New (25¢) Spectrum Eagle Type, Plate #

As reported elsewhere (*page 123*), the latest in a string of three new PNC numbers likely resulted because of a change in paper type. But in addition to the paper change, a die-cut pattern change is also evident.

Previous typical Spectrum Eagle coils (known only with #V11111) exhibit a moderate fluorescence under shortwave ultraviolet light (SW UV); no “dead” type was ever observed and reported. Also, as an Avery-made large-roll (for affixing equipment) self-adhesive coil, examples have shown only one of the two known “subtle” Avery large-roll die cuts. This pattern has the “more rounded” transition shape from a corner to a first peak.

(Sidestepping terms, simply note: To date, all *Forever Ferns* and *Forever Red-White-Blue* 2014 coils also are “more rounded.” But 49¢ *Ferns* show the other subtle shape, less rounded or “more angled.” *For a chart of Avery issues and types, see Nov. 2011 issue, page 173.*)

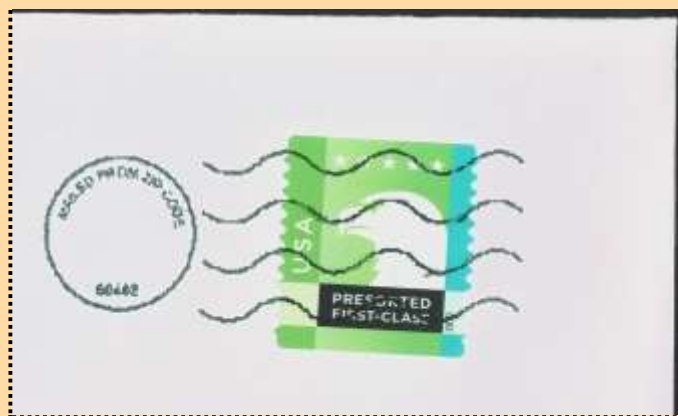
On August 5 I acquired a political mailing with an August 1 dated insert using a different (25¢) Spectrum Eagle – it is the first one that had absolutely no reaction under SW UV. In addition, this coil has the less-rounded die cut – the first time I found that on this issue. Under Murphy's Law a fly is in the ointment in the form of a wrinkled upper-right corner. Nevertheless, not knowing what the future held I worked to obtain high resolution images of the shapes.

Then on August 16 I found a discarded large 9- by 12-inch cover with a mailer's permit postmark on another example, followed on August 23 by a discarded second cover at a different post office from the same mailer (*Virginia National Guard*). The closeup images of the new die cut shown later are from one of these.

With Mark Schultz's PNC report of V11112, his example was then examined under SW UV and for its die cut. Both matched the unnumbered coils on the above August covers.

In mid-September, Frank Covey acquired mint V11112 strips and took pictures under SW UV. Images of coils from these examples, as well as of the original and new die cut shapes, are shown in color on the back page.

– Ron Blanks



Upper-right corner of August 2014 cover with discovery copy, (25¢) Spectrum Eagle with issue's second paper type, second die cut type  
(later shown to be from V11112 rolls)

## Readers' Forum



Closeup of PNC at right

Last valley  
of left side,  
"row above"

First valley  
of left side,  
this row



V1111 PNC, <45¢> 2012 Freedom Flag

**Embedded "knoll" on 2012 Flag PNC.** Jeff Fiszbein (member 1148) continues to find substantially mis-aligned die cuts on Avery produced coils with plate number in clippings mixtures. He recently found a <45¢> Flag PNC #V1111 from 2012 with vertical diecutting mis-aligned with the design. The row separation section (normally sliced in half by horizontal row slitting) is moved down to reveal its whole "knoll" shape, as shown *between* the arrows in images above. Unlike Jeff's "bell" example of a 2014 Flag shown in the August issue, the knoll shape is used in transition from a Peak-Valley\* run of serpentine shapes to a Valley-Peak run.

\*—starts with peak, ends with valley, "PV" for short.

**On recent PNC FDCs pricing** (*last month's Coil Line, page 114*). I started the Scott FDC catalog listings for PNC FDCs back when Dick Sine was the nominal editor, but I was really hired by Mike Mellone. When I retired, Larry Graf continued to do the annual updates. My most recent copy is the 2005 edition, which still lists them. I know more recent editions exist, but this is the one I have.

5¢ Motorcycle No. 3 is valued at \$2,000 as a pair; No. 4 at \$1,200 pair and \$1,800 strip of three, so both of John Hotchner's as strips of four are better. 18¢ No. 10 is \$450 as a pair.

— Ken Lawrence #103



## New 1¢ Bobcat Self-stick Type, #

While the September *Coil Line* was being finalized for publication, Michael Mules reported new PNC # P2222, for the self-adhesive 1¢ Bobcat coil, available in large rolls for affixing equipment. At the last minute on August 24, we fitted that news into a small space on page 115.

Meanwhile, evidence of a paper change had already surfaced before the new P2222 report. On August 19 I acquired a discarded political mailing with a self-stick 1¢ Bobcat and a 4¢ Chippendale Chair canceled with a mailer's permit postmark. Under shortwave ultraviolet light, the 1¢ Bobcat is mildly fluorescent (while prior examples are unresponsive). It wasn't confirmed that the new number and paper were related until a *Linn's Stamp News* report by Jay Bigalke in the Sept. 29 issue (page 14). USPS spokesperson Mark Saunders stated that Ashton Potter's recent new printing used P2222 "because of a change in paper."

This outcome follows on the heels of the new P3333 number for the (5¢) Art Deco Bird (likewise an Ashton Potter product), which is also on mildly fluorescent paper in contrast to the "dead" paper of coils with P2222 or P1111. (*Related story, back page.*)



### Terms & Codes Used

1. Numbers in ( ) indicate **total** number of items in lot; [ ] = number of items within a *subset* of the lot.
2. All lots are listed with a minimum starting bid and bids must conform!
3. For precancel strips: If there is a gap, it is listed; no listing = NO GAP!
4. In case of a tie bid, the **earliest** postmark or email date wins.
5. All winning bids will be at one bidding increment over the second high bidder.
6. I will not accept phone bids; bids must be only via mail and email! (**Please find Bid Sheet on wrapper for mail use.**)
7. R = right, L = left, HVY = heavy, Lt = light, BMC = black machine cancel, PMC = purple machine cancel, FDC = first day cover or cancel, S# = plain strip, P = position, RHC = red hand cancel, BHC = black hand cancel, @ = at, cvr=cover, SCV = Scott Catalog Value, VAL = PNC<sup>3</sup> Values List.
8. ALL Bids must be in the auction director's hands by the closing date **Tuesday, October 28, 2014** and not just postmarked by then!
9. Bids not conforming to the bidding increments will be lowered according to the proper increment.
10. "Buy Bids" will be accepted, but realize that only one Buy Bid can be honored and that is the *first* one, and at only one advance over second high bidder.
11. IF you add a "+" (plus sign) to your Bid, I will use it to break a tie only if needed.
12. Please, when placing a bid over the Internet, DO NOT use a spreadsheet or other such program as I have problems opening them. Just place it in standard email form. Once placed, please do not mail a confirming copy. The email address to send your bids to is [PNC3auctions@aol.com](mailto:PNC3auctions@aol.com). No phone bids, please!
13. If you need to call me with questions on a lot but NOT to place a bid, please call after 9 a.m. Chicago time. (773) 622-0663.

## BIDDING INCREMENTS

**\$1.00 TO \$4.75 = .25**  
**\$5.00 TO \$9.50 = .50**  
**\$10.00 TO \$49.00 = 1.00**  
**\$50.00 TO \$97.50 = 2.50**  
**\$100.00 TO \$495.00 = 5.00**  
**\$500.00 AND OVER = \$10.00**

"I would like to thank all the members that have donated lots for this auction and future ones, since I always seem to have a backlog of them from auction to auction. Please bid on these as they help keep your dues as low as they are. Good luck in this auction to both sellers and bidders."

--Joe Sedivy,  
 Auction Director

Email: [PNC3auctions@aol.com](mailto:PNC3auctions@aol.com)

**\* Bid Sheet is on inside of cover wrapper.\***

Lot #	Item	Description	Min. Bid	Lot #	Item	Description	Min. Bid
<b>A. ===== Mint # Singles &amp; Pairs =====</b>				13	1907	<b>18¢</b> Surrey, #10, F/VF, line VF	2.75
1		<b>20 diff</b> coil line pairs from 1057/1947 2014 SCV \$36.55 all MNH	\$12.00	14	2005	<b>20¢</b> Consumer, (2), #1, VF/XF, line VF, #2, VF/XF, line XF-S	1.50
2	1904a	<b>10.9¢</b> Hansom P/C, PS-2, #3, F/VF, line VF, line gap	15.00	15		<b>#2</b> , VF-XF, line VF/XF	5.00
<b>B. ===== Mint Plate #Strips of 3 =====</b>				16		<b>#3</b> , F-VF, line VF/XF	1.50
3	1891	<b>18¢</b> Flag, #3, VF	20.00	17	2115a	<b>22¢</b> Flag, #1, F/VF, tag block 16½ x 21½	1.00
4		<b>#6</b> VF, 2 minor gum marks from mount <b>PIC</b>	350.00	18	2123a	<b>3.4¢</b> Bus P/C #1 XF/S, line VF-XF, line gap	90.00
5	1895b	<b>20¢</b> Flag P/C, #14, F/VF	12.00	19	2915A	<b>32¢</b> FOP, S/A, #89899, 10x10, pv/vp, F/VF, VAL for this strip \$195.00	50.00
6	1900	<b>5.2¢</b> Sleigh, #3, S, line XF-S, all 3 stamps upper part untagged, 2014 SCV \$100.00	55.00	20	O135	<b>20¢</b> Official #1 VF, light fingerprint on gum	5.00
7	1901a	<b>5.9¢</b> Bike P/C, #5, F/VF, # just clears bottom, line VF, line gap, 2014 SCV \$75.00	7.50	21	(10)	<b>all diff</b> strips, F/VF-S, key items 1901 #3, 1906A #3A, O-135 #1	4.00
8		<b>#6</b> , F/VF, close @R, line F/VF, gap 1/5L, 2014 SCV \$75.00	7.50	<b>C. ===== Mint Plate # Strip of 4 =====</b>			
9	1902	<b>7.4¢</b> Buggy, #2, XF, Scarce type IIa paper	3.00	22	1900a	<b>5.2¢</b> Sleigh P/C, (2). #3&5, XF/S, lines XF/S, both with RARE line gaps VAL \$500.00 ea. for PS-5s	70.00
10	1904	<b>10.9¢</b> Hansom #1 F/VF, high & L, line XF-S	2.75	23	3281d	<b>33¢</b> FOC, #9999A, VF/XF, small date	17.00
11	1904a	<b>10.9¢</b> Hansom P/C #2, VF, line S, gap 1/2L, no report of this gap in mint, only as used single	180.00	<b>D. ===== Mint Plate # Strips of 5 =====</b>			
12		<b>(2)</b> , #3, VF, #4, XF, both lines XF, #3 has line gap, 2014 SCV \$150.00	70.00	24	1891	<b>18¢</b> Flag, #1, VF, Horiz gum skip about 4mm from bottom	85.00
				25		<b>#2</b> , VF/XF, disturbed gum from mount	10.00
				26		<b>#2</b> , XF	18.00

# ... PNC<sup>3</sup> Autumn Auction # 51 ...

Joe Sedivy, auctioneer

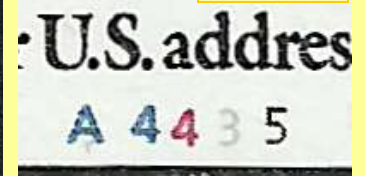
Lot #	Item	Description	Min. Bid	Lot #	Item	Description	Min. Bid
	(con't)	..... Mint Plate # Strips of 5 .....					
27	1891	(2), #4& #5, VF	\$3.75	70	(2) #2135,	17¢ Dog Sled, #2, F/VF, #2149, 18¢ Washington, #3333 F/VF, has tagging shift 3mm down and 50% to left	5.00
28		#7, VF/XF, gum shows mark from storage	4.75	71	2226a	2¢ Locomotive, #2, XF/S	25¢
29		#7, F/VF	5.00	72	2252a	3¢ Conestoga, #5, (small type) VF/XF, low gloss gum	3.00
30	1895	20¢ Flag, #1, XF	8.00	73	2252	3¢ Conestoga, (5), #1, #2252a, #2&3 dull gum, #5&6 shiny gum, all XF	5.00
31		20¢ Flag, #2, VF, wide tag block, minor gum mark from mount	2.00	74	2255	7.6¢ Carreta, (3), #1-3, XF-S	3.00
32	1895a	#4, VF, narrow tag, S/E @R, perfs bent btwn stamps 4&5 looks like from roll end	100.00	75	2258	13¢ Police W. P/C, #1, XF	2.00
33		#13, VF tag block 18x21-1/2	1.50	76	2259	13.2¢ CoalCar, (2), #1&2, XF-S	2.50
34	1898Ab	4¢ Stage, (4), #3&4 F/VF, #5, XF, #6, VF, lines VF/XF, all have gap @1L	6.00	77	2260	15¢ Tug, (2), #1, F/VF, #2, XF	2.00
35	1901	5.9¢ Bike, (2), #3 & 4, F/VF, close @r, lines F/VF	2.00	78	2261	16.7¢ Popcorn W., (2), #1&2, VF-XF	2.25
36	1902	7.4¢ Buggy, #2, VF, type II gum	1.50	79	2263	20¢ Cable Car, (2), #1&2, VF/XF	4.50
37	1902a	7.4¢ Buggy P/C, #2, VF	1.25	80	2265	21¢ RR Mail Car, (2), #1&2, F/VF	4.75
38	1903	9.3¢ Mail W. (2), #3, F/VF, line F/VF, has short perfs @R, #4, F/VF, line F/VF	1.00	81	2266	24.1¢ Tandem, #1, VF-XF	2.00
39	1904a	10.9¢ Hansom P/C, (2), #1&2, XF, lines VF, both line gap	8.00	82	2452a	5¢ Circus W., #2, VF, low gloss gum	1.00
40		#2, F/VF, line F/VF, gap 1R	10.00	83	2452B	5¢ Circus W. #A1, XF, low gloss gum	0.25
41	1906	17¢ Auto (7) #1-7, F/VF-XF, lines F/VF-XF	12.00	84	(6)	#2452 #1 & 2, #2452D #S1, #2452b #A1 & A2, #2452Dg #S2 all VF, 5¢ Circus Wagons, #S2 has top pink #on# 07030	4.75
42		#6, XF/S, line XF/S	3.00	85	2463	20¢ Cog Railroad, #1, XF-S	1.50
43	1906a	17¢ Auto P/C, (2), #3A&4A, F/VF, lines F	4.75	86		(2), #1&2, XF	4.50
44		#7A, VF, line F/VF	2.50	87	2464a	23¢ Lunch W. #3, VF, dull gum, mottled tagging	3.50
45		(2), #3B, VF/XF, line F/VF, #4B, VF/XF, line VF	30.00	88		SAME	5.00
46		(2), #5B&6B, VF/XF, lines VF/XF, gap 1L	22.00	89		#4, VF/XF, mottled tagging shiny gum	5.00
47		#5C, XF, line VF/XF	30.00	90		SAME but XF/S	5.00
48		#7C, XF, line XF/S	15.00	91	2466	32¢ Ferryboat, #3, XF, shiny gum	3.00
49	1907	18¢ Surrey, (2), #5&6, VF/XF, lines VF/XF	4.00	92		#5, XF, shiny gum	5.00
50		#6, F/VF close @R, line F/VF	75¢	93		(2), #2&4, VF/XF	5.00
51	1908	20¢ Pumper, #12, VF/XF, line XF	3.50	94		(3), #3,4,5, VF, low gloss gum	12.00
52		#14, VF, line VF/XF	3.50	95		#5, XF, shiny gum	3.00
53		(2), #5&13, F/VF perfs close @R, lines F	2.00	96	(2)	#2468, 2468b \$1 Seaplane, #1&3 shiny gum, XF-S	12.00
54		(3), #5,9,&10, XF, lines XF	4.50	97	2468	\$1 Seaplane #1, XF	8.00
55		(3), #5,12, &14, F/VF, lines VF-XF	5.00	98		SAME	7.00
56	2115	22¢ Flag, #14, XF/S, tag block 19x22	15.00	99	2491	29¢ Pine Cone, #B1, VF-XF	5.00
57	2123a	3.4¢ Bus PC(2), #1&2 VF, lines F/VF gap 1R	2.50	100	2523	29¢ Rushmore, (2), #3, VF, 3 short perfs @L, #7, XF	3.00
58	2124a	4.9¢ Buckboard P/C, #4, VF, line F/VF, gap 3L, VAL this gap position is \$75 for a PS-8	2.00	101	2525	29¢ Tulip, (2), #S1111&S2222, roulette type, XF	4.50
59	2125	5.5¢ Star Truck, #1, VF-XF	1.00	102	2598b	29¢ Eagle, #111, VF, liner B (upside down)	5.00
60	2125a	5.5¢ Star Truck P/C, (2), #1&2, XF	1.75	103		#111, XF, liner type A (rightside up)	3.00
61	2126a	6¢ Tricycle P/C, (2), #1&2, XF	3.25	104	2599b	29¢ Liberty, #D1111, XF	4.00
62	(3)	#2127, XF/S, 2127a,F/VF, 2127b, VF/XF, 7.1¢ Tractor, all #1	2.00	105	2602	(10¢) E&S,(3), #A11111, A21112, A22112, VF/XF	2.00
63	2128	8.3¢ Ambulance (2), #1&2, XF-S, lines XF-S	1.50	106		(4) #A33333, A33335, A34424, A34426, VF/XF	4.75
64	2128a	8.3¢ Ambulance P/C, (2), #1&2, XF-S, lines XF-S, line gaps	1.75	107		(6) #A43324, A43325, A43326, A43334, A43335, A43426, VF/XF	6.00
65	(3)	#2130 10.1¢ Oil W #1, VF, [2] #2130b, #2&3, VF	4.75	108		(4) #A88888, A89999, A99998, A99999, XF	5.00
66	(4)	[2] #2132, 12¢ Stanley, #1&2, VF, [2] #1&2 #2132a, P/C, F/VF line gaps, all lines F/VF	5.00	109		(4) #A1110101010, A1110101011, A1111101010, A1211101010, XF	6.00
67	2133	12.5¢ Pushcart, (2), #1, XF, #2, F-VF	3.50	110	2605	23¢ Presorted Flag, (6), all known #s, XF/S	11.00
68	2133a	12.5¢ Pushcart P/C, (2), #1&2, VF-XF	3.50	111		#A222 with fat red 2, XF/S	1.75
69	2134b	14¢ Iceboat, #2, VF/XF	1.75				

Lot #	Item	Description	Min. Bid	Lot #	Item	Description	Min. Bid
	(con't)	Mint Plate # Strips of 5					
112	2609	29¢ Whitehouse, (3), #7,11,14, VF/XF, #14 has two short perfs @L	\$5.00	150	#6677, VF		3.50
113	2813	29¢ Love, #B1, VF-XF	5.00	151	3133 32¢ FOP linerless, #M11111, VF/XF		4.50
114	2873b	29¢ Santa, #V1111, XF	5.00	152	SAME but VF		3.00
115	2888	(25¢) G Flag, Blue backgrnd, #S11111, XF/S	1.50	153	3264 (33¢) H Hat, (2), #1111 & 3333, VF/XF		6.50
116	2890	Blue G Flag, (2), #A1112 & A1211, XF	5.00	154	(2), #3343 & 3444, XF		7.00
117		#A1314, XF	2.00	155	3265 (33¢) H Hats S/A, (2), #1111, VF & 2222, XF		6.50
118		(2), #A1324 & A2214, XF	6.00	156	3266 (33¢) H Hat S/A w/spaces, #1111, VF		5.00
119		(2), #A2211 & A2212, VF/XF	5.50	157	(2) #3270 (10¢) E&S, (2), #11111, small date, #3270a #22222, large date, VF		5.00
120		(2), #A2213 & A3113, XF/S	5.50	158	3281c 33¢ FOC, (2), #1111 & 2222, VF		6.50
121		#4435 VF/XF, 2014 SCV \$175, rare # (PIC)	90.00	159	(2) #3281c, #5555 small date, #3281 #7777 large date, VF		6.50
122		(6), #A1111, A1212, A3433, A4426, A5327, A5427, VF/XF, A4426 has 2 short perfs @L	15.00	160	3453b (34¢) N/D Liberty, #1111, backing paper ends at perfs @R, VF		4.00
123	2892	Red G Flag, (2), # S1111 & S2222, XF, roulette type	6.50	161	3465a (34¢) N/D Lilies, #B1111, XF/S		20.00
124	(2)	#2891 #S1111, #2892, #S2222, VF	4.00	162	3617 23¢ Washington, #V35, pv/vp, XF/S, backing paper ends at perfs @L and ends before perfs @R		2.00
125	2905	(10¢) Auto, (3), #S111, S222, S333, VF, small, med., large dates	4.50	163	#V45, vp/pv, XF		2.00
126	2913	32¢ FOP, W/A, (2), #11111, dull gum, & 22221, shiny gum VF/XF	7.00	164	3632 37¢ Wavy Flag, #1111A, F/VF, backing paper ends at perfs both ends		3.00
127		(2), #33333 & 44444, XF	5.50	165	3633A 37¢ Wavy Flag, #B1111, VF		5.00
128		(2), #66646 & 99969, VF	6.50	166	3770 (10¢) Atlas S/A w/gaps #V12111 VF-XF, rare#		40.00
129	(3)	#2913, [2] #11111, 44444, #2915A, #23222, 10x10 pv/vp, VF	9.00	167	3829 37¢ Egret S/A, (2), #V1111 vp/pv & V3212 pv/vp, VF, the black 2 is printed @top of the dark blue 1		6.50
130	2915A	32¢ FOP S/A, (2), #11111 & 22222, 10x10, pv/vp VF	6.50	168	3967 (39¢) N/D Liberty & Flag, #S1111, VF/XF, 2 short perfs @ top R pink bottom back #2060 at position 5		1.75
131		(2), #23222 & 33333, 10x10 pv/vp, F/VF	6.50	169	4188 41¢ Flag, #V22222, VF		3.75
132		#55555, 10x10, pv/vp, F/VF	3.00	170	4287a 42¢ State Flags, PS-5, #S1111111, plus mint single #4273 plus a used single @piece of #4273 plate # S1111111, VF, @the mint PS-5 the backing paper does not go beyond perfs		4.00
133		(2), #44444 & 55555, 10x10 pv/vp, F/VF	6.50	171	4297a 44¢ State Flags, PS-5, #S1111111 plus a used single @piece of #4293, VF/XF, backing paper does not go beyond perfs		3.00
134		(2), #66666 & 78777, 11x10, pp/vv, F/VF	6.50				
135		#88898, F/VF, 10x10, pv/vp	25.00				
136		SAME	60.00				
137		#99899, 11x10, pp/vv, F/VF	50.00				
138		#13211A, 10x10, pv/vp, XF/S	40.00				
139		(2), #13231A & 13311A, 10x10, pv/vp, F/VF	6.50				
140		(2), #22222A & 44444A 10x10 pv/vp VF/XF	6.00				
141		(2), #55555A, 10x10. Pv/vp & 66666A, 10x10, vp/pv, F/VF	6.50				
142		#77777A, 10x10, pv/vp, VF	2.50				
143		#78777A, 10x10, pv/vp, F/VF	6.50				
144	2915C	32¢ FOP S/A, #66666, 11x12, vv/pp, VF	12.00				
145		#66666, 12x12, vp/pv, F/VF	16.00				
146	3054	32¢ Yellow Rose, (2), #1122 & 2222, F/VF	6.50				
147		#2233, XF	4.00				
148		(2), #5555, XF, #5556, VF	6.50				
149		(2), #5566 & 7777, VF	6.50				

Lot 4



Lot 121



# ... PNC<sup>3</sup> Autumn Auction # 51 ...

Joe Sedivy, auctioneer

Lot #	Item	Description	Min. Bid	Lot #	Item	Description	Min. Bid
		<i>(con't) ..... Mint Plate # Strips of 5 .....</i>					
172	4495	<b>(5¢)</b> Art Deco Bird, #P3333, VF	\$2.50	200	1904	<b>10.9¢</b> Hansom, PS-7, #2, VF, line F/VF, foot of #2 underinked, small pink ink spot @btm back of middle stamp shows faint @face	6.00
173	4749	<b>46¢</b> Star, #S111, XF	1.50	201	1904a	<b>10.9¢</b> Hansom P/C, PS-6, #2, F/VF bit low & right, line VF, has dropped transfer @2L	35.00
174	O135	<b>20¢</b> Official, #1, XF/S	20.00	202	1906a	<b>17¢</b> Auto P/C, PS-11, #3A, XF/S, line VF, gap 4-7/8R, VAL \$13.50 as 5R gap	7.00
175	O159	<b>37¢</b> Official, #S111, VF	2.75	203		<b>PS-12</b> , #3A, F/VF, line VF, gap 6R, VAL \$37.50	20.00
176	O160	<b>39¢</b> Official, #S111, VF	6.00	204		<b>PS-9</b> , #3A, F/VF bit low & L, line F/VF just touches perfs, gap 4L	1.00
177	CVP32	<b>19¢</b> Variable Rate Shield, #A11, VF/XF	15.00	205		<b>PS-11</b> , #3A, VF/XF, line XF/S, gap 5L, VAL \$11.00 as PS-10	6.00
178	(17)	<b>All</b> diff 2132/2259 PS5 collection, 2013 SCV \$52.75, top value: Sc.2132b #1, F/VF-S	15.00	206		<b>PS-12</b> , #3A, F/VF, line VF, gap 6-1/8L, VAL \$85.00 as PS-11	42.00
179	(16)	<b>All</b> diff 1906/2261 PS5 collection, 2013 SCV \$44.30, top value: Sc.1906 #6, F/VF-S	12.00	207		<b>PS-10</b> , #4A, VF/XF, line VF, gap 4L, VAL \$12.25 as PS-9	6.00
180	2115a/ 2115c	<b>22¢</b> Flag (16) all diff PS-5 collection, 2013 SCV \$48.50, top value: Sc.2115a #13, F/VF-S	15.00	208		<b>PS-12</b> , #4A, VF/XF, line XF/S, gap 6L VAL \$85.00 as PS-11	42.00
181	(6)	<b>Diff.</b> Mint Strips #2523 #5,7,9, #2525, #S1111, #3305a PS-9, #B2222, #3641a, PS-8 #B12222, face \$11.73, VF	10.00	209		<b>PS-12</b> , #4A, VF/XF, line XF/S, gap 6R, VAL \$37.50	20.00
	<b>E.</b>	<b>=== Mint Plate # Strips of 6 or Longer ===</b>		210		<b>PS-8</b> , #5A, VF, line XF, gap 1L, VAL \$6.00 as PS-7	3.00
182	1891	<b>18¢</b> Flag, #3, VF/XF, has small black mark at top of stamps @3L&R	150.00	211		<b>PS-8</b> , #5A, XF, line XF/S, gap 2L, VAL \$22.50 as PS-7, two stamps to left of gap have some letters lightly printed almost missing in "Presort First Class"	12.00
183	1900a	<b>5.2¢</b> Sleigh P/C, PS-13, #1, gap 5-1/2R, XF/S, line XF/S, VAL \$60.00 as PS-11	25.00	212		<b>PS-8</b> , #6A, XF, line XF/S, gap 1-1/4L, VAL \$17.25 as PS-7 precancel mat shifted to left	10.00
184		<b>PS-10</b> , #2, gap 5R, VF, line XF, there is a black dot above "gh" of sleigh @6R	1.00	213		<b>PS-8</b> , #7A, VF/XF, line VF/XF, no gap	8.00
185		<b>PS-13</b> , #2, gap 5-1/2R, XF/S, line XF/S, VAL \$60.00	28.00	214		<b>(2)</b> , PS-6, #5&6BA, VF, #6 line VF/XF, #5 line S, line gap	30.00
186		<b>PS-10</b> , #2, gap 5L, XF, line XF, VAL \$50.00	20.00	215		<b>PS-10</b> , #4BA, VF-XF, line VF, gap 4R	50.00
187		<b>PS-12</b> , #3, gap 5L, XF-S, line VF	14.00	216	1908	<b>20¢</b> Pumper, PS-9, #11, F, perfs just touch @R, line F	25.00
188		<b>PS-12</b> , #5, gap 5L, XF-S, line XF	14.00	217	2123a	<b>3.4¢</b> School Bus P/C, (2), PS-8, #1, F-VF, #2, XF-S, lines VF gap 2R, #1 missing ". " @3R, VAL 24.75 ea	14.00
189	1901a	<b>5.9¢</b> Bike P/C, PS-12, #3, gap 5R, VF/XF, line VF/XF, VAL \$500.00 as PS-10	225.00	218		<b>(2)</b> , PS-9, #1&2, XF, lines VF-XF, gap 3R, VAL \$29.00 ea	22.00
190		<b>PS-11</b> , #3, gap 5L, VF, line VF/XF, VAL \$100.00 as PS-9	25.00	219	2124a	<b>4.9¢</b> Buckboard P/C, PS-8, #2, VF vert, line XF, gap 2R, row 3 of web has double bar brake bottom line only	7.00
191		<b>PS-12</b> , #4, gap 5R, XF/S, line VF/XF, VAL \$500.00 as PS-10	225.00	220		<b>PS-8</b> , #5, gap 1R, VF, line VF, from row 3 of web, shows double break in bottom line only	7.00
192		<b>PS-6</b> , #5, line gap, S, line S	45.00	221		<b>PS-8</b> , #5, XF, line XF, gap 1R, from row 4 of web shows double bar brake in both lines, VAL \$15.00 as PS-5	8.50
193		<b>PS-11</b> , #4, gap 5L, VF/XF, line XF, VAL \$100.00	45.00				
194		<b>PS-6</b> , #6, line gap, XF, line S	45.00				
195	1903a	<b>9.3¢</b> MailWagon P/C, PS-9, #1, F/VF, line VF/XF, gap 2-3/4L, Type I paper, VAL \$23.75 as PS-8	14.00				
196		<b>PS-10</b> , #1, F/VF, line F/VF, gap 3-3/4L, type I paper, VAL as PS-9, \$95.00	25.00				
197		<b>PS-9</b> , #2, VF, line XF, gap 2-3/4L, type I paper, VAL as PS-8, \$20.50	12.00				
198		<b>PS-10</b> , #2, gap 3-3/4L, F/VF, line F/VF, VAL \$95.00 as PS-9	25.00				
199		<b>PS-9</b> , #5, gap 3-1/3L, VF/XF, line XF, VAL \$1000.00 <b>(PIC)</b>	300.00				

**Lot 199**

*more lots ⇨⇨⇨*



# ... PNC<sup>3</sup> Autumn Auction # 51 ...

Joe Sedivy, auctioneer

Lot #	Item	Description	Min. Bid	Lot #	Item	Description	Min. Bid
222	2124a	<b>PS-8</b> , #6, XF, line XF, gap 2-7/8R, from row 4 of web shows double bar break in both top & bottom lines, VAL \$350.00	\$125.00	<b>G.</b>	===== <b>Mis-Perforated</b> =====		
223	2799a	<b>29¢</b> Christmas, PS-8, #V1111111, VF/XF	4.00	244	1908	<b>20¢</b> Pumper, PS-5, #1, VF-XF Horiz., perfs thru left side of "r" in Pumper, 2½mm to left	35.00
224	2893	<b>(5¢)</b> G Flag green back ground, unopened roll of 500, #A11111 looks to be XF/S centering	26.00	245		<b>PS-5</b> , #2, XF-S Horiz., perfs thru "e" of Pumper 3mm to left ( <b>PIC</b> )	225.00
225	(2)	<b>2908</b> (15¢) Tailfin, PS-7, #11111, & 2909, #S11111, VF	2.50	<b>H.</b>	===== <b>Mis-Cut</b> =====		
226	2915A	<b>32¢</b> FOP S/A PS7 #99999 11x10 pp/vv F-VF	3.50	246	1901a	<b>5.9¢</b> Bike P/C, PS-5, #3, VF vert, line VF, # split 50/50	10.00
227		<b>PS-7</b> , #77777A, 10x10, vp/pv, F-VF, VAL \$75.00 as PS-5	30.00	247		<b>#4</b> , VF vert, line XF, perfs bent @1,2,3, # split 50/50	10.00
228	3208	<b>(25¢)</b> Diner, PS-7, #S11111, S	4.00	248	1906	<b>17¢</b> Auto, PS-5, #3, VF vert, line VF/XF, # 100% top	6.00
229	3481a	<b>34¢</b> Lilies, PS-9, #B2211, VF/XF	5.00	249		<b>SAME</b> but plate #4	6.00
230	3770	<b>(10¢)</b> Atlas PS-7 #V12111 rare number F/VF	60.00	250	( <b>PIC</b> )	<b>PS-7</b> , #4, VF-XF vert, line XF, # 100% top	20.00
231	3801b	<b>(25¢)</b> Eagle, PS-10, #S1111111, XF/S	3.00	251		<b>(2)</b> , PS-5 #3&4, F/VF vert, lines VF, #s 100% top	6.00
232	4007a	<b>39¢</b> Crops, PS-10 with leader strip attached, #S1111, VF	8.00	252		<b>PS-5</b> , #5, F-VF vert, line F-VF, # 95% top no trace @ bottom	3.50
	<b>F.</b>	===== <b>Imperfs</b> =====		253	2125	<b>5.5¢</b> Star Truck, PS-5, #1, VF-XF vert, # 100% top	13.00
233	1895d	<b>20¢</b> Flag, PS-7, #5, VF, bit high, looks Imperf but has blind perfs	50.00	254	2128a	<b>8.3¢</b> Ambulance P/C, PS-5, #1 misaligned, #100% bottom, 2 <sup>nd</sup> # 50% at top, line gap	10.00
234		<b>PS-4</b> , #8, VF-XF, # @2nd stamp from L	80.00	255	2134	<b>14¢</b> Ice Boat, PS-3, #1, VF vert, line VF, # cut 80% bottom, no trace at top, type IIIa paper, unlisted	8.00
235		<b>S-5</b> , NO #, VF vert, split block tag 16-1/2x 21-½ 1-1/2mm at bottom strip also mis-cut ball at top of pole also at bottom.	6.00	256	2452a	<b>5¢</b> Circus Wagon, PS-7, #1, XF vert, # split 30% top 70% bottom	5.00
236	1897Ac	<b>2¢</b> Locomotive, PS-6, #3, F/VF bit high, VAL \$225.00 as PS-5	100.00	257	2468	<b>\$1</b> Plane, PS-5, #1, XF vert, # cut 50/50	7.00
237		<b>PS-6</b> , #4, F/VF cut bit high, VAL \$225.00 as PS-5	100.00	<b>I.</b>	==== <b>Constant Plate &amp; Mat Varieties</b> ====		
238	2115	<b>22¢</b> Flag, PS-3, #7, XF	40.00	258	1895b	<b>20¢</b> Flag P/C, PS-5, #14, XF-S, "Q" Variety	48.00
239	2136a	<b>25¢</b> Bread Wagon, PS-6, #2, F/VF bit high	110.00	259	2123a	<b>3.4¢</b> Bus P/C, #1, VF, line VF, gap 1-1/16R, missing period after ORG @1&2R	4.75
240		<b>PS-5</b> , #2, F/VF vert, mis-cut 10% of "Bread Wagon 1880s" at bottom ( <b>PIC</b> )	75.00	260		<b>SAME</b> but plate #2	4.75
241	2265a	<b>21¢</b> Mail Car, PS-6, #1, XF-S, VAL \$300.00	150.00	261	2128a	<b>8.3¢</b> Ambulance P/C, PS-5, #2, VF, line VF, gap 2L, missing period after "RT" @2L	4.75
242	2280b	<b>25¢</b> Yosemite block tag PS5 #5, VF bit high	125.00				
243	2281a	<b>25¢</b> Bee, S2, NO#, VF	3.25				

Lot →  
240



← Lot  
245



Lot #	Item	Description	Min. Bid	Lot #	Item	Description	Min. Bid
262	2255	<b>7.6¢</b> Carreta, PS-5, #2, S, shows white wheel variety described page 89, 7-2014 <i>Coil Line</i>	\$20.00			... bottom black #3450 @pos. 2, "or 1L"	
263	2602	<b>(10¢)</b> E&S, (7), PS-5, full set of Broken Yellow "1" numbers, all seven strips XF including rare #A12213	100.00	288		<b>PS-5</b> , #P3333, VF, top black #3460 @pos. 2 "or 1L"	3.00
264	2915A	<b>32¢</b> FOP S/A PS-5, #88888, 11x10, pp/vv, VF-XF, brown dot under the date of stamp with number, unlisted	10.00	289		<b>(2)</b> , PS-5, #P3333, black top #3430 & bottom #3420 @pos. 5 "or 2R", VF	5.50
265		<b>PS-5</b> , #9.9999, 11x10, pp/vv, XF, has period after 1st 9	40.00	290		<b>(2)</b> , PS-9, #P3333, VF, top black #3490 & bottom #3480 on position #1 "or 4L	5.00
	<b>J.</b>	===== <b>Tagging Varieties</b> =====			<b>L.</b>	===== <b>Other Varieties</b> =====	
266	1897e	<b>1¢</b> Omni, PS-3, #4, F/VF, untagged error	40.00	291	1901	<b>5.9¢</b> Bike, Unopened roll of 500, #3&4, VF/XF, line VF/XF	30.00
267	2115b	<b>22¢</b> Flag, PS-5, #18, VF-XF, from "D" press tagging is wide and tall 19-1/2 x 23	25.00	292		<b>SAME</b> but #4 showing	30.00
268	2228a	<b>4¢</b> Stage, PS-5, #1, XF, overall tagged with vert tag break near perfs @1L has bump in center of brake line facing R	6.00	293	2123A	<b>3.4¢</b> Bus P/C PS-5, (2), #1, VF, line VF, #2, XF, line S, both line gap, VAL \$737.50, missing period after ORG @1R	150.00
269	2257b	<b>10¢</b> Canal Boat, PS-5, #4, XF, looks untagged, but a few tagging flecks visible	30.00	294	2466b	<b>32¢</b> Ferryboat, PS-7, #5, XF, Color Error, Bronx Blue	45.00
270	2257c	<b>10¢</b> Canal Boat, PS-5, #4, XF/S, tagging gap @1L	2.00	295	2523c	<b>29¢</b> Rushmore, PS-5, #7, S, Color Error, Toledo Brown	70.00
271	2603b	<b>(10¢)</b> E&S, PS-5, #11111, tagged error, VF	4.50	296		<b>PS-7</b> , #7, XF/S	70.00
272	2607a	<b>23¢</b> USA Flag, PS-5, #11111, VF/XF, tagged error	50.00	297		<b>SAME</b>	70.00
273	2903a	<b>(5¢)</b> Mountains, PS-5, #11111, XF, tagged error	25.00	298		<b>Full</b> Roll of 100, #7, VF-XF	350.00
274		<b>SAME</b>	28.00	299	2609	<b>29¢</b> Whitehouse, Single NO#, VF, color error Navy Blue	3.75
275	3632A	<b>37¢</b> Flag, PS-5, #S4444, XF/S, smooth tagging	75.00	300	2609c	<b>29¢</b> Whitehouse, S-6, NO#, S, Color Error, Indigo Blue	50.00
276	4141	<b>26¢</b> Panther, PS-5, #S1111, XF/S, smooth solid tagging	100.00	301	3265	<b>(33¢)</b> H Hat, PS-5, #2222, XF-S, black dash thru Gray 2 & part of Blue 2 ( <b>PIC, back pg</b> )	3.75
	<b>K.</b>	===== <b># ON #</b> =====		302	3281d	<b>33¢</b> FOC, PS-5, #9999A, VF/XF, small date, underinked type, yellow 9 90% missing, Aqua 9 15% missing, Red 1 of date just a dot @two stamps	24.00
277	2891	<b>(32¢)</b> Red "G", PS-7, #S11111, VF-XF, bottom purple back#0670	10.00	303	3453	<b>(34¢)</b> Liberty, PS-9, #1111, VF, dark date & jumbo stamp @3R, 22 1/2mm others just 22mm	35.00
278	2915B	<b>32¢</b> FOP S/A w/spaces, PS-5, #S11111, F/VF, top pink B#07810	7.00	304	3617	<b>23¢</b> Washington, PS-5, #V46, vp/pv, zigzag cut @L start of roll	2.00
279	2915D	<b>32¢</b> FOP S/A w/spaces, PS-5, #11111, XF, top aqua #0460	9.00	305	3769	<b>(10¢)</b> Lion, PS-5, #S11111, VF, super perf @1R	15.00
280		<b>PS-5</b> , #11111, XF. Bottom aqua #1020	11.00	306	3829	<b>37¢</b> Egret, PS-5, #V3222, VF/XF, knoll top left	12.00
281	3265	<b>(33¢)</b> H Hat, (5), PS-7, #1111, set with bottom Aqua back numbers, #0520 @2L, 0540 @1L, 0560 #on#, 0580 @1R, 0600 @2R F/VF	25.00		<b>M.</b>	===== <b>FIRST DAY CANCELS</b> =====	
282	3271	<b>(10¢)</b> E&S, PS-5, #11111, VF/XF, top Aqua #4340	6.50	307	2115e	<b>22¢</b> Flag, single untagged error with single of 2115 & 2115c tied to Art Craft FD Cover with self stick address label, No #s on any of the three stamps, VF	3.75
283	3282	<b>33¢</b> FOC, PS-5, #2222, VF, top Aqua #4320 round die cut	12.00	308	2281	<b>25¢</b> Bee, PS-3, #1, tied to unaddressed House of Fram cachet FDC, VF/XF	2.00
284	3447	<b>(10¢)</b> Lion w/spaces, PS-7, (5), #S22222, XF, set with top red back #s 04780 @2R, 04800 #1R, 04820 #on#, 04840 @1L, 04860 @2L	8.00	309		<b>PS-5</b> , #1, VF/XF, tied to unaddressed Gill Craft cachet FDC	4.00
285	3770	<b>(10¢)</b> Atlas w/spaces, PS-5, #V11222, S, high middle aqua #03820 @pos. 1 "or 2L"	1.25	310	2468	<b>\$1</b> Plane, PS-3, #1, VF/XF, tied to unaddressed House of Fram cachet FDC	5.00
286	4131	<b>(41¢)</b> Flag, PS-5, #S1111, VF/XF, bottom pink #2080	6.50	311	2518	<b>(29¢)</b> Tulip, (5) PS-3, all known numbers tied to five unaddressed Artmaster cachet FDC, VF/XF	10.00
287	4495	<b>(5¢)</b> Art Deco Bird, PS-5, #P3333, VF,...	3.00	312	2523A	<b>29¢</b> Rushmore gravure PS-3, #A11111, VF/XF, tied to unaddressed House of Fram cachet FDC from coil of 10,000 <b>more lots</b> ⇨⇨⇨	2.00

# ... PNC<sup>3</sup> Autumn Auction # 51 ...

Joe Sedivy, auctioneer

Lot #	Item	Description	Min. Bid	Lot #	Item	Description	Min. Bid
313	2526	<b>29¢</b> Tulip, PS-3, #S2222, VF/XF, tied to unaddressed hand painted "Kribbs Kover cachet FDC #ed 3 of 20, has c/c of Park Seed Co. of Greenwood, SC 29647	\$6.00	323	2149a	<b>18¢</b> Washington P/C, PS-1, #33333, on unopened blue #9 window cover from Capital Cash, VF, small tear @R away from stamp	2.00
314	4323	<b>&lt;45¢&gt;</b> Forever State Flag, #S1111111, USA & Texas stamps tied by Texas FD Slogan Cancel to unaddressed 6-¾ cover VF/XF	10.00	324	2150a	<b>21.1¢</b> Letter P/C, PS-1, #111111, on 5x8 white window cover with full perfs both sides from First Deposit Nat'l Bank, F/VF	110.00
315	4622	<b>1¢</b> Bobcat, 5 S/A stamps tied to unaddressed cachet FDC with plate #P111 stamp in middle of 5 stamps. VF	10.00	325		<b>PS-1</b> , #111121, full perfs @L, S/E @R, on #9 white window cover from First Deposit Nat'l Bank with red pointing hand Auxiliary mark on front, insufficient address, overall F/VF ( <b>PIC</b> )	150.00
<p>N. ===== <b>OTHER COVERS</b> =====</p>							
316	1906	<b>17¢</b> Auto, PS-1, #2, and NO# #1899 5¢ Cycle tied to #6-¾ manila colored cover addressed to Ken Lawrence, both stamps full perfs, XF	12.00	326	2266	<b>24.1¢</b> Tandem P/C, #1, full perfs both sides on #8 white window cover from Visa Gold with red auxiliary stamp on front & back for insufficient address, overall XF	25.00
317	1906a	<b>17¢</b> Auto P/C, PS-1, #5B, 95% # at top no trace at bottom on unopened size 9 white window cover with contents from Citicorp, has red pointing hand "return to sender" forwarding order expired, cover VF, S/E @L from affixing machine cut	20.00	327	2262a	<b>17.5¢</b> Race Car, PS-1, #1, on #9 white window cover from First Deposit Nat'l Bank, with red auxiliary hand front & back, F/VF, perf cut short @L but there	20.00
318	1907	<b>18¢</b> Surrey, PS-1, #3, VF, tied by PMC from Denver CO 6/24/81 to white #6 cover to Sweepstakes address	40.00	328	2264a	<b>20.5¢</b> Fire Engine, PS-1, #1, tied to #9 white window cover by BMC dated 4/21/90, black auxiliary hand front & back, XF	25.00
319		<b>PS-1</b> , #15 plus 2¢ #1582 tied to #6 reply cover by BMC w/slogan to Nat'l Bank of North America, cover VF short perf @L, the cancel date is 12/3/81	65.00	329	2523d	<b>29¢</b> Rushmore, Lenz Tagged, PS-1, #2 tied to #9 white window by Seattle Wash. 10/11/91 BMC, full perfs both side 2014 SCV for a used single off cover for this # \$250.00 overall VF	95.00
320	1908	<b>20¢</b> Pumper, PS-5 #12 plus NO# single of 2136 tied by BHC 8/23/1988 to #10 cover from Skowhegan Savings Bank, F/VF	25.00	330	2602	( <b>10¢</b> ) E&S, PS-1, #A88888, full perf @L short but there @R, on #9 white window cover with red & orange color bars across top from Harvard Graphics, overall VF	1.50
321		<b>PS-3</b> , #14, tied to #10 white cover by BMC 17 Feb/?. XF cover has c/c from Steven Willand Inc.	20.00	331		<b>PS-1</b> , #A1110101010, perfs short @R, on opened @ bottom, kraft window cover from Sports Illustrated, overall VF	2.00
322	2115	<b>22¢</b> Flag, PS-1, #6, tied to #10 white cover by BMC of Houston TX 22/dec/1987, F/VF	20.00				

*more lots ⇨⇨⇨*



Lot #	Item	Description	Min. Bid	Lot #	Item	Description	Min. Bid
	(con't)	..... Other Covers .....					
332	2602	<b>PS-1</b> , #A1412111111, full perfs both sides, on unopened gray #7 cover from Sears, overall VF-XF	\$2.00	348	3770	... Apr 26 2002 on front, overall VF <b>(10¢)</b> Atlas S/A, PS-1, #V11111, on 6-1/2x4-3/4 unopened mostly white & gray cover from Coastal Living with blue & red Received hand stamp Jan 16 2004 on front double struck, overall VF-XF	1.00
333	2604	<b>(10¢)</b> E&S, #S22222, tied to #10 white window cover from Selling Life Insurance Magazine, unopened by black spray cancel from Denver CO 4/10/98, has receiving hand cancel of 4/13/98, VF	1.00	349		<b>PS-1</b> , #V12222, on #10 white unopened cover from Pueblo CO with docket on back rec'd 11/18/05	2.00
334	2606	<b>23¢</b> USA Flag Presort, PS-1, #A2233, on size 9 red window cover from Dept. of Sweepstakes, Readers Digest, XF	20.00	350		<b>PS-1</b> , #V21111 on 6x9-1/2 white cover from Radisson Seven Seas Cruises with blue & red Rec'd hand stamp on front Jul/2/2004, XF	2.00
335		<b>PS-1</b> , #A4364, full perfs both sides, on #10 white cover from Chemical Bank for Shell M/C, overall XF	20.00	351		<b>PS-1</b> , #V21111, on unopened 6-1/2 x 5 Ad Folded of Colorado Homes, overall VF-XF	2.50
336		<b>PS-1</b> , #A4443, full perfs @R, short but there @L, on #10 white cover from Colonial Nat'l Bank, overall XF	20.00	352		<b>PS-1</b> , #V22112 on #10 cream colored unopened cover from Assurant Employee Benefits with blue & red rev'd hand stamp on face with 5/31/2006 date, overall VF	1.50
337		<b>PS-1</b> , #A4444, full perfs both sides, on #10 white cover from First Deposit Nat'l Bank, unopened, overall XF	20.00	353	3864	<b>(5¢)</b> Sea Coast WAG, PS-1, #S1111, on unopened white #10 window covers tied by mailer cancel from Republican Nat'l Committee docket on back Rec'd 6/21/04, overall XF	6.00
338		<b>PS-1</b> , #A4453, full perfs L side, @R side short but there on #10 white window cover from Citizens State Bank, overall XF	20.00	354	3874	<b>(5¢)</b> Sea Coast S/A, PS-1, #P2222, with 3/4mm deep die cuts, on unopened white window cover from NRA with membership card showing in window, docket on back Rec'd 2/14/05, overall XF	15.00
339	2607	<b>23¢</b> USA, PS-1, #1111, full perfs on #7 cream color window cover of Sports Illustrated, has docket on back rec'd 1/9/93, VF	1.00	355	4157	<b>(10¢)</b> Banner S/A, PS-1, #V333, on unopened #10 blue cover from Pueblo CO address, overall VF-XF	2.50
340	2912	<b>(25¢)</b> Jukebox, PS-1, #S11111, full perfs @L, short but there @R, on unopened #10 white/silver window cover from MBNA platinum plus of Delaware, overall VF	1.75	356		<b>PS-1</b> , #V333, on unopened white #10 window cover of Lakewood CO, overall VF/XF	1.00
341		<b>SAME</b> but perfs @R cut almost to S/E	1.75	357	4323	<b>&lt;45¢&gt;</b> Texas Flag, #S1111111, tied to white #10 cover by Denver CO. spray cancel of 19 Feb 2014, left perfs are wavy die cut looks like from start of roll, VF, c/c from a dentist	2.00
342	2912A	<b>(25¢)</b> Jukebox S/A, PS-1, #S11111, on unopened #10 white window cover from Day-Timer Inc. has two red Received hand stamps with Nov 23 1998 on front, overall VF-XF	4.00	358	4495	<b>(5¢)</b> Art Deco Bird, PS-1, #P2222, on #10 white window cover from Christian Foundation for Children & aging in KS, VF	1.00
343	3228	<b>(10¢)</b> Bike S/A PS-1, #444, on 6x9 unopened cream color from Hersheys Collectibles w/docket on back Rec'd 10/13/04, Round die cuts, XF	12.00	359	4768	<b>&lt;46¢&gt;</b> Summer Flag, PS-1, #V1111, tied to #10 white cover by Denver CO spray cancel of 29 May 2014, from Pueblo County Historical Society, VF	1.00
344		<b>PS-1</b> , #444, Square die cut, on #10 white window cover from Mealeys Furniture, small tear U/L of cover, overall VF	45.00	360	4802	<b>1¢</b> Bobcat, PS-3 #S111111 + S-2 of same on a #8 reply cover unused to United Service Org., Inc. in Washington DC, VF/XF	1.00
345	3447a	<b>(10¢)</b> Lion S/A, PS-1, #S55555, on 6x9 unopened cream color window cover from Hersheys Collectibles with blue & red Received hand stamp Jul 25 2005 on front, overall XF	5.00			<b>O.</b> ===== <b>Used Singles</b> =====	
346	3520	<b>(10¢)</b> Atlas S/A, PS-1, #B1111, on white #10 unopened cover with Highlands Ranch CO return address and blue & red Received hand stamp Apr 15 2002 on front, overall VF-XF	1.00	361	1900	<b>5.2¢</b> Sleigh, #3, XF, full perfs, light black cancel	70.00
347		<b>PS-1</b> , #B1111, on white #10 cover from <i>Coil Line</i> , w/blue & red Received handstamp...	1.00	362		<b>#5</b> , XF, full perfs, light black cancel, top 1/2 of stamp untagged	65.00
				363	1901a	<b>5.9¢</b> Bike P/C, #5, VF, full perfs, shows line gap ( <b>PIC, next page</b> )	30.00
				364		<b>#6</b> , XF, full perfs, shows gap at 1/8L	30.00

more lots ⇨⇨⇨

Lot #	Item	Description	Min. Bid	Lot #	Item	Description	Min. Bid
365	1903	<b>9.3¢</b> Mail W, #5, F/VF, full perfs, light BMC	\$70.00			the club so you can still get his autograph	
366		<b>#5</b> , F/VF, full perfs, light BMC	75.00	385	3759	<b>3¢</b> Silver Coffee Pot, label from roll of 10,000, USPS #782900 from 2005, XF	1.00
367		<b>#6</b> , F/VF, full perfs, light BMC	75.00			<b>S.</b> ===== <b>Club Donations</b> =====	
368	1904a	<b>10.9¢</b> Hansom P/C, #3, VF	30.00	386	1901	<b>5.9¢</b> Bike, PS-2, #3, S, line S	75¢
369		<b>#3</b> , XF, full perfs, line gap	35.00	387		<b>PS-2</b> , #4, S Vert, line XF-S, # split 50% bottom 60% top	75¢
370		<b>#4</b> , VF, full perfs	30.00	388	2904B	<b>(5¢)</b> Mountains, NO # Pair, XF/S, with top Aqua Back #0000 on left stamps backing paper	25¢
371	2466b	<b>32¢</b> Ferry Boat #5, Bronx Blue, XF, full perfs	45.00	389	2115	<b>22¢</b> Flag, (3), #2,5,8, VF, #8 with red tip @dome, all PS-3	1.50
372	2890	<b>(32¢)</b> G Flag, #A4435, XF, full perfs, light BMC ( <i>PIC, back page</i> )	145.00	390	(2)	<b>#2115</b> 22¢ Flag #10, #2115a #12 VF all PS3	1.00
373	2915A	<b>32¢</b> FOP S/A, #88898, 10x11 vv/pp, F/VF, light BMC, this is a RARE die cut	525.00	391	2452D	<b>5¢</b> Circus W., PS-7, #S1, XF-S	75¢
374		<b>#89878</b> , 10x10, pv/vp, F/VF, cancel covers part of #	3.75	392	2454	<b>5¢</b> Canoe, PS-9, #S11, XF-S	75¢
375		<b>#89899</b> 10x10 pv/vp med BMC, VF full perfs	100.00	393	2604	<b>(10¢)</b> E&S, PS-7, #S11111, low gloss gum several perfs bent	50¢
376		<b>#13231A</b> , 10x10, vp/pv, F/VF, rare die cut	220.00	394	2280a	<b>25¢</b> Yosemite, PS-5, #2, XF, foot of "2" missing, under inked	2.00
377		<b>#13211A</b> , 10x10, pv/vp, VF/XF, black slogan cancel	35.00	395	1297	<b>3¢</b> Parkman PS-2, VF Horiz. Mis-cut vert, shows 25% of plate numbers at left 35762/35763, line VF/XF	50¢
378		<b>#78777A</b> , 10x10, pv/vp, VF, light BMC	10.00	396	1520	<b>10¢</b> Jefferson Memorial, PS-2, F/VF vert, mis-cut shows 25% of plate number at bottom #36120/36205	50¢
		<b>P.</b> ===== <b>USED PAIRS</b> =====		397	1614a	<b>7.7¢</b> Horn P/C, used single mis-perfed 3mm to left, has the precancel lines with Detroit, MI between. F/VF low	25¢
379	1891	<b>18¢</b> Flag, #6, VF/XF, very light BMC, 2 short perfs top R, 2014 SCV as single \$675.00 ( <i>PIC</i> )	225.00	398	1615Cd	<b>8.4¢</b> Piano, used single, mis-cut shows 15% of plate number at bottom, #38715, has precancel lines with Fort Lauderdale. VF	25¢
		<b>Q.</b> ===== <b>USED PS-5s</b> =====		399		<b>24</b> mixed used on-piece red "G" flags #2889 & 2892, F/VF	1.00
380	2518	<b>(29¢)</b> F Tulip, #1111, VF, light black roller cancel	1.00	400		<b>13</b> mixed bubble pack labels and leader strips F/VF from #3622, 4002, 3481a, 3829, 4140, 4141, 4175a, 4134	50¢
381	2464	<b>23¢</b> Lunch W. #2, XF, light black roller cancel	1.00			<b>end of auction</b>	
		<b>R.</b> ===== <b>MISC.</b> =====				<b>Bidding closes Tuesday, Oct. 28</b>	
382		<b>Walmart</b> FOP dummy label tied to #6 white cover with 1¢ Omni to pay 33¢ rate by Eastern ME BMC, VF, ILLEGAL USAGE, label has typical perf flaws	10.00				
383	U605e	<b>20¢</b> Remember Paralyzed Veterans mint #6 postal cover, XF/S, entire with missing black ink error "no value{20c}" the 2014 SCV in italics, seldom sold, \$350.00	85.00				
384		<b>1990</b> PNC Varieties book by Rob Washburn, Spiral Bound, lightly used, he is a member of	20.00				

⌚ ----- **end of auction** ----- ⌚  
**Bidding closes Tuesday, Oct. 28**

## Editor's Message

Due to the expanded auction pages, the usual editor's message space is replaced by PNC content. But some glitches from the Sept. issue should be mentioned. (Did you find the others?) We wanted the "overlooked" 1¢ Bobcat P1111 (page 116) to be shown on the front page, but a similar franking with plain 1¢ was shown instead. The Coil Topics index lists a feature that was bumped from that issue; it is now planned for next month. The two "E" plate number closeups in Readers' Forum referred to coils on the front page, but only the "hopping 2" version was shown.

cropped  
from Lot  
250 →



Lot  
379  
→



↑  
Lot  
363

## Classified Ads

**PNC used singles**, used strips, MNH PS5s. Great prices! Guaranteed quality! No hassles! Visit <http://www.angelfire.com/ca5/HimesPNCs> or send LSASE for lists to John Himes, PO Box 453, Cypress, CA 90630-0453. Please specify what you collect. Or e-mail [johnwhimes@yahoo.com](mailto:johnwhimes@yahoo.com). Member 957L

\* \* \*

**Makeshift blue** window MDI booklets intermediate list by cover type or advanced list by plate number, position, liner type etc. Excel file by email from [dugeyes@msn.com](mailto:dugeyes@msn.com) or regular mail Doug Iams, PO Box 7651, Santa Rosa CA 95407. Member 625

**CLASSIFIED AD** rates are 6¢ per word, with a minimum cost of \$3.00 per insertion. (Only members may advertise in *Coil Line*.)

**PNC<sup>3</sup> members** are entitled to two free 50-word ads per year. (There is a 10¢ charge for each word over 50 with free ads.) Contact the editor to place an ad (please see page 122).

### Mailing List Available

Rental of the club mailing list is available upon request. A one-time usage fee of \$50.00 includes preprinted address labels. Contact Richard Beecher, Secretary. Email: [richardlater@aol.com](mailto:richardlater@aol.com) or see page 122 for more contact methods.

### More on (5¢) Art Deco Bird P3333

Developments over variations among (5¢) Art Deco Bird coils seen on mail continue since August's *Coil Line*. As of the September issue deadline, I had yet to find the latest plate # (the third one, P3333) on cover. Jay Bigalke's P3333 story in *Linn's Stamp News* of August 25 (page 10, published August 9) notes that at that time, mint examples were still unknown.

According to Jay, Mark Saunders of USPS explained that supplier Ashton Potter "noted a paper change" and so replaced P2222 with P3333 in printing more rolls. The August *Coil Line* reported that the owner of the discovery-copy P3333 on cover stated it does not react to shortwave ultraviolet light (SW UV). But that turned out to be incorrect, unless only phosphorescence was of interest. (please see next page)

## Display Advertising Rates *Coil Line*

• Full Page	\$ 100.00
• Half Page	\$ 80.00
• Third Page	\$ 65.00
• Quarter Page	\$ 45.00
• Sixth Page	\$ 35.00
• Eighth Page	\$ 20.00
• Back Cover	Add \$ 50.00
• Inside Cover	Add \$ 25.00
• Color Ad (for full page)	Add \$ 100.00
• Color Ad - Electronic Version	Add \$ 25.00

(Discounts available for multiple insertions.)

## Membership Update

### New Applicant

Walter J. Paton, Jr. (2253)  
124 Elm St  
Leominster, MA 01453-3507  
[telrpm@al.com](mailto:telrpm@al.com)

Names of applicants are published for review. A member who questions the suitability of a prospective member should contact the Membership Committee Chair Michael Conway with the objection ([mjconway@hotmail.com](mailto:mjconway@hotmail.com) or (203)268-5896.) Applicants are accepted as members one month after notice if no objection is made.

### Deceased

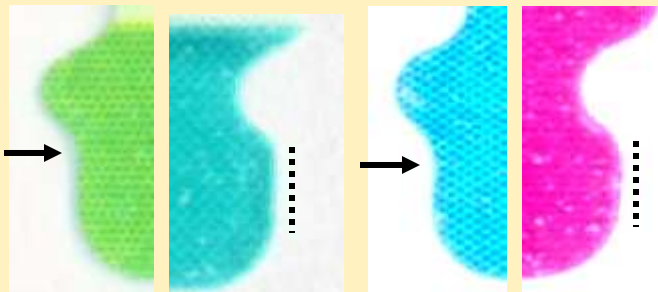
William A. Caville (2148)

<b>Previous Membership Count</b>	<b>519</b>
<b>New Applicant</b>	<b>1</b>
<b>Deceased</b>	<b>-1</b>
<b>PNC<sup>3</sup> Membership Count</b>	<b>519</b>

## *Coil Topics Index this issue...*

(25¢) Spectrum Eagle, new V11112.....	124
1¢ Bobcat s/a, new P2222.....	125
<45¢> Flag 2012 Avery, embedded knoll... ..	125
(5¢) Art Deco Bird, new P3333.....	135
<i>The Current Plate #s chart returns in a future issue.</i>	

(from page 124, New Spectrum Eagle type)



less-rounded – Die Cuts – more-rounded  
(some find the edge at lower-right easier to check)

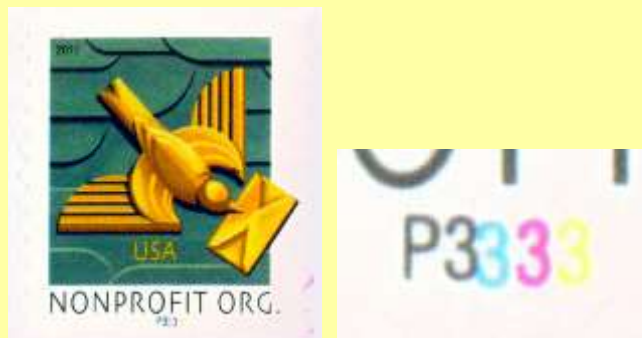


↑ Image taken under SW UV only  
(left, from V11112 roll; right, V11111)



↑ as above, under SW UV & dim room light

(from page 135, New Art Deco Bird type)



August's *Coil Line* included the find of four unnumbered Art Deco Birds on-cover (mailed in May and June) which have a modest fluorescence under SW UV. Up to deadline of the September issue, I had found 19 more covers. Two of these, unnumbered, are also fluorescent, while two of the ordinary types are P2222 PNCs.

But under bright indirect sunlight (through a north-facing window) viewing these examples, I finally noticed something else: The fluorescent cases appear a smidgeon whiter than the ordinary ones; or, put another way, the ordinary ones have an ever-so-slight off-white color when compared to the new type. And this difference in daylight is very slight – its appearance is based on the angle used to hold the stamps up to daylight and one's eyes.

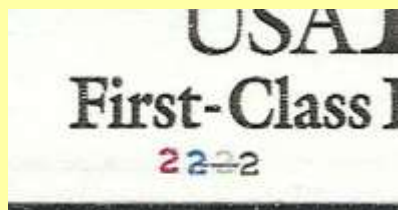
I then became suspicious of the sole P3333 report under SW UV as being "dead" (depending on envelope paper's optical brighteners, it can be difficult to observe a stamp's modest fluorescence). It was most likely that these six unnumbered fluorescent Art Deco Birds are from P3333 rolls, to be confirmed soon. On August 25, right after the September issue was sent to press, I found my first P3333 on-cover. It matched the attributes of the earlier unnumbered "whiter" coils.

– Ron Blanks



← cropped from  
↓ Lot 301

Lot  
372 →



# PNC<sup>3</sup> Auction #51 Official Bid Sheet

### Terms & Codes Used

1. Numbers in ( ) indicate **total** number of items in lot; [ ] = number of items within a *subset* of the lot.
2. All lots are listed with a minimum starting bid and bids must conform!
3. For precancel strips: If there is a gap, it is listed; no listing = NO GAP!
4. In case of a tie bid, the **earliest** postmark or email date wins.
5. All winning bids will be at one bidding increment over the second high bidder.
6. I will not accept phone bids; bids must be only via mail and email! **(Please find Bid Sheet on wrapper for mail use.)**
7. R = right, L = left, HVY = heavy, Lt = light, BMC = black machine cancel, PMC = purple machine cancel, FDC = first day cover or cancel, S# = plain strip, P = position, RHC = red hand cancel, BHC = black hand cancel, @ = at, cvr= cover, SCV= Scott Catalog Value, VAL= PNC<sup>3</sup> Values List.
8. ALL Bids must be in the auction director's hands by the

closing date **Tuesday, October 28, 2014** and not just postmarked by then!

9. Bids not conforming to the bidding increments will be lowered according to the proper increment.
10. "Buy Bids" will be accepted, but realize that only one Buy Bid can be honored and that is the *first* one, and at only one advance over second high bidder.
11. IF you add a "+" (plus sign) to your Bid, I will use it to break a tie only if needed.
12. Please, when placing a bid over the Internet, DO NOT use a spreadsheet or other such program as I have problems opening them. Just place it in standard email form. Once placed, please do not mail a confirming copy. The email address to send your bids to is [PNC3auctions@aol.com](mailto:PNC3auctions@aol.com). No phone bids please!
13. If you need to call me with questions on a lot but NOT to place a bid, please call after 9 a.m. Chicago time (773) 622-0663.

### BIDDING INCREMENTS:

Bids \$0.25 to 4.75 -- **\$.25**  
 5.00 to 9.50 -- **.50**  
 10.00 to 49.00 -- **1.00**  
 50.00 to 97.50 -- **2.50**  
 100.00 to 495.00 -- **5.00**  
 500.00 + -- **10.00**

**Bids must be in the hands  
 of the auctioneer by  
 Tuesday, October 28, 2014**

NAME \_\_\_\_\_ PNC<sup>3</sup> # \_\_\_\_\_

Home Address \_\_\_\_\_ Home Phone ( ) \_\_\_\_\_

City \_\_\_\_\_ State \_\_\_\_\_ Zip \_\_\_\_\_

Email Address \_\_\_\_\_

Signature \_\_\_\_\_ (ALL SHEETS MUST BE SIGNED)

**Please enter the following bids for me in this mail auction:**

LOT #	BID	LOT #	BID	LOT #	BID	LOT #	BID	LOT #	BID	LOT #	BID	LOT #	BID

**PLEASE CHECK YOUR BIDS CAREFULLY!**

Please limit my purchase to \$\_\_\_\_\_. (Note! Limits under \$50.00 are respectfully declined. Bid limits will be executed in the order [vertically] that you bid the lots.)

Send complete SIGNED bid sheets to: **Joe Sedivy, PNC3 Auctioneer, P O Box 410602, Chicago IL 60641**  
**Email: PNC3auctions@aol.com**