

# PNC<sup>3</sup> Auction #52 Official Bid Sheet

### Terms & Codes Used

1. Numbers in ( ) indicate **total** number of items in lot; [ ] = number of items within a *subset* of the lot.
2. All lots are listed with a minimum starting bid and bids must conform!
3. For precancel strips: If has gap, it's listed; no listing=NO GAP!
4. In case of a tie bid, the **earliest** postmark or email date wins.
5. All winning bids will be at one bidding increment over the second high bidder.
6. I will not accept phone bids; bids must be only via mail and email! **(Please find Bid Sheet on wrapper for mail use.)**
7. R = right, L = left, HVY = heavy, Lt = light, BMC = black machine cancel, PMC = purple machine cancel, FDC = first day cover or cancel, S# =plain strip, P =position, RHC = red hand cancel, BHC =black hand cancel, @ =at, btm =bottom, cvr=cover, [cwr]=with window, rtn=return, Rec'd=Received, SCV = Scott Catalog Value, VAL = PNC<sup>3</sup> Values List.
8. ALL Bids must be in the auction director's hands by the closing date **Saturday, March 28, 2015** and not just postmarked by then!
9. Bids not conforming to the bidding increments will be lowered according to the proper increment.
10. "Buy Bids" will be accepted, but realize that only one Buy Bid can be honored and that is the *first* one, and at only one advance over second high bidder.
11. IF you add a "+" (plus sign) to your Bid, I will use it to break a tie only if needed.
12. Please, when placing a bid over the Internet, DO NOT use a spreadsheet or other such program as I have problems opening them. Just place it in standard email form. Once placed, please do not mail a confirming copy. The email address to send your bids to is [PNC3auctions@aol.com](mailto:PNC3auctions@aol.com). No phone bids please!
13. If you need to call me with questions on a lot but NOT to place a bid, please call after 9 a.m. Chicago time (773) 622-0663.

### BIDDING INCREMENTS:

Bids \$0.25 to 4.75 -- **\$.25**  
 5.00 to 9.50 -- **.50**  
 10.00 to 49.00 -- **1.00**  
 50.00 to 97.50 -- **2.50**  
 100.00 to 495.00 -- **5.00**  
 500.00 + -- **10.00**

**Bids must be in the hands  
 of the auctioneer by  
 Saturday, March 28, 2015**

NAME \_\_\_\_\_ PNC<sup>3</sup> # \_\_\_\_\_  
 Home Address \_\_\_\_\_ Home Phone ( ) \_\_\_\_\_  
 City \_\_\_\_\_ State \_\_\_\_\_ Zip \_\_\_\_\_  
 Email Address \_\_\_\_\_  
 Signature \_\_\_\_\_ (ALL SHEETS MUST BE SIGNED)

**Please enter the following bids for me in this mail auction:**

LOT #	BID	LOT #	BID	LOT #	BID	LOT #	BID	LOT #	BID	LOT #	BID	LOT #	BID

**PLEASE CHECK YOUR BIDS CAREFULLY!**

Please limit my purchase to \$\_\_\_\_\_. (Note! Limits under \$50.00 are respectfully declined. Bid limits will be executed in the order [vertically] that you bid the lots.)

Send complete SIGNED bid sheets to: **Joe Sedivy, PNC3 Auctioneer, P O Box 410602, Chicago IL 60641**  
**Email: PNC3auctions@aol.com**

Our 28<sup>th</sup> Year

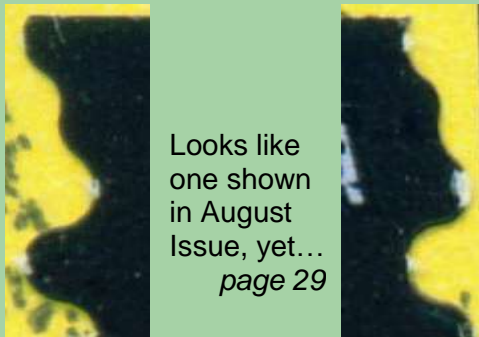
# PNC<sup>3</sup>



# Coil Line

Journal of the PNC<sup>3</sup> [www.pnc3.org](http://www.pnc3.org)  
**Plate Number Coil Collectors Club**  
American Philatelic Society Affiliate # 185

**March 2015**  
Vol. 28, No. 3  
Whole No. 321



Looks like one shown in August Issue, yet...  
*page 29*



▲ detail of Auction lot 280... *page 37*



◀ Auction lot 336... *page 39*



Auction lot 341... *page 39* ▶



▲ detail of Auction lot 248... *page 36*

◀ Auction lot 3... *page 32*



Bid in the PNC<sup>3</sup> Spring Auction!

(see pages 32 – 38)



**Bids Deadline:**  
**Saturday, March 28th**

### Also...

- PNC<sup>3</sup> Catalog Committee's new offerings... *page 27*
- PNC<sup>3</sup> member turns 100... *page 28*
- Market in PNCs... *page 28*

# Coil Line

Journal of the Plate Number  
Coil Collectors Club (PNC<sup>3</sup>)

Published by: PNC<sup>3</sup>  
ISSN: 1931-5112



**Editor:** Ronald Blanks  
[coillineeditor@yahoo.com](mailto:coillineeditor@yahoo.com)

**Print Edition Mailings:** Brian and Cory Snippen  
[snippenb@gmail.com](mailto:snippenb@gmail.com)

**Digital Edition Emails:** Frank Covey  
[ecoilline@comcast.net](mailto:ecoilline@comcast.net)

**Scott #2134 plate # 2** (issued  
March 23, 1985, 30 years ago)

## PNC<sup>3</sup> Contacts

**PNC<sup>3</sup> Website** [www.pnc3.org](http://www.pnc3.org)  
Allan Clapp, Webmaster  
email: [webmaster@pnc3.org](mailto:webmaster@pnc3.org)

(For *Coil Line*-related matters, please  
see column at left for appropriate contact.)

### Advertising Rates (one-time)

Full Page	\$ 100.00	Eighth Page	\$ 20.00
Half Page	\$ 80.00	Business Card	\$ 20.00
Third Page	\$ 65.00	Back Cover	Add \$ 50.00
Quarter Page	\$ 45.00	Inside Cover	Add \$ 25.00
Sixth Page	\$ 35.00	Color, full page	Add \$ 100.00

(For Color Ads, Digital Version only, Add \$25.00)

A check or money order, made out to **PNC<sup>3</sup>**, must accompany camera ready ad. Advertising copy must be submitted by the 1st of the previous month prior to the publication date. Please send all copy to Ronald Blanks, Coil Line Editor, PO Box 531, Windsor, VA 23487.

The Classified Ad rates are six cents a word per issue, with a minimum of \$3.00 per individual ad. (Two 50-word ads per year per member are available at no charge. There is a 10¢ per word cost for words over 50.)

All material, including articles submitted, will be edited and formatted for inclusion in **Coil Line**, and must be received by the 1st of the month prior to publication.

**Coil Line reserves the right to edit copy as necessary.**

**Coil Line** is published monthly and as a member benefit is available digitally with annual dues of \$14.00. Printed version of **Coil Line** is also available. To U.S. addresses, to receive printed edition add \$14.00 for Bulk Mailing; add \$22.00 for First Class Mailing. To Non-USA addresses, add \$27.00 for mailing. Past print issues of **Coil Line** available at \$2.50 per copy (quantities limited).

All material is copyright 2015. All rights reserved. Material in this publication may be copied or reproduced with acknowledgment to **Coil Line**. Opinions expressed by the authors and writers are their own, and do not necessarily reflect those of the editor, publisher, or membership of the Plate Number Coil Collectors Club.

All content matters, letters to the Editor, and advertising questions should be sent to **Coil Line**, c/o Ronald Blanks, PO Box 531, Windsor, VA 23487. Phone 757-478-8719; email: [coillineeditor@yahoo.com](mailto:coillineeditor@yahoo.com).  
*For mail delivery problems, contact the mailer below.*

**Postal mailings prepared by:** Brian Snippen, PO Box 5542, Albuquerque, New Mexico 87185-5542. Email: [snippenb@gmail.com](mailto:snippenb@gmail.com). Phone: 505-404-1624.

Mailed from Zip Code 87185 on or near February 27, 2015.

## Elected Officers

Robert Thompson, **President**, 12431 Golden Thistle, Houston, TX 77058. email: [rthompson@pncvarieties.com](mailto:rthompson@pncvarieties.com) 713-397-1772

Michael Mules, **Vice President**, PO Box 267, Mukwonago, WI 53149. email: [pnc5dealer@wi.rr.com](mailto:pnc5dealer@wi.rr.com) 414-234-9867

Richard L. Beecher, **Secretary**, PO Box 4790, Blaine, WA 98231-4790. email: [richardlater@aol.com](mailto:richardlater@aol.com) 604-467-8700

John Himes, **Treasurer**, PO Box 453, Cypress, CA 90630-0453. email: [johnwhimes@yahoo.com](mailto:johnwhimes@yahoo.com) 714-826-8552

Gene Trinks, **Past President**, 16415 W. Desert Wren Ct, Surprise, AZ 85374. email: [gctrinks@cox.net](mailto:gctrinks@cox.net) 623-322-4619

Jill Ambrose, **At Large**, PO Box 54622, Cincinnati, OH 45254-0622. email: [jillambrose@zoomtown.com](mailto:jillambrose@zoomtown.com) 513-231-4208

Melvyn Borofsky, **At Large**, 101 West Sterling Way, Leesburg, FL 34788-2781. email: [melborofsky@comcast.net](mailto:melborofsky@comcast.net) 352-483-1408

**PNC<sup>3</sup> Catalog Committee:** Frank Covey, Andy Jakes, Jill Ambrose, Gene Trinks, Peter Tukker  
**PNC<sup>3</sup> auctioneer:** Joe Sedivy

## Coil Line Production

**editor:** Ronald Blanks  
**digital version producer:** Jill Ambrose  
**senior consultant:** Gene Trinks  
**technical consultant:** Alan Thomson  
**writers:**  
Frank Covey, Doug Iams, Gene Trinks  
**contributing writers:**  
Dan Forgues, John Himes, Mark Schultz,  
Robert E. Thompson, Bob Rabinowitz  
**proofreaders:** John Himes, Gene Trinks  
**printing:** State Wide Printing - Albuquerque NM  
**printed mailings:** Brian and Cory Snippen  
**digital-edition emails:** Frank Covey  
**subscriptions:** Richard L. Beecher

## President's Message

### from the PNC<sup>3</sup> president ...

In this issue of *Coil Line*, there is a list of PNC<sup>3</sup> members that are being dropped for not renewing their membership. I talked recently to Michael Conway, the chairperson of our Membership Committee, about this. He suggested that if you know any of these people, try contacting them to see if maybe it was just an oversight on their part. We would hate to lose them. This is something that he has been doing for a while, Michael said.

There are still about 150 members that have not set up their accounts to be able to sign into the secure member's area of our website. Our Webmaster, Allan Clapp, is sending a reminder out to their current email addresses.

Also in this issue, we have our semi-annual club auction. This is a good place to pick up some unusual items and to fill some spaces at a lower cost. But, you have to be a current member in order to participate. Check it out when you get a chance.

I'm still looking for some volunteers to assist in two areas. The first is a chairperson for the Awards Committee. This committee needs at least one volunteer, but more would be appreciated. It will entail contacting the chairpersons for the various stamp shows to see if there are any exhibits that will be of PNCs. There are approximately 75 shows per year, including the regional and national shows. That works out to about six shows per month. PNC<sup>3</sup> has two awards to bestow. They are the "PNC<sup>3</sup> President's Award-Best Exhibit of Plate Number Coils" and the "PNC<sup>3</sup> President's Achievement Award." Both are available for any of the shows.

The second area I need a volunteer for is to help maintain and keep up-to-date the members' area on our website. This will include adding new members, updating existing members and removing those that are not current. There are probably less than five of these each month, except for the time of year when the dues to renew membership are due.

If anyone is interested in helping out on either of these, or if you have any questions, please don't hesitate to reach me. (See page 26 for ways to contact me).  
— Robert E. Thompson



## Welcome!



If you are a new reader to *Coil Line*, PNC<sup>3</sup> is enjoying our 28<sup>th</sup> year. We are a community of stamp collectors specializing in plate numbered coil issues of the USA. The first PNCs were issued in 1981 and, in February 1988, a network of PNC specialists founded our club. *Coil Line* was launched in May, 1988 and serves (along with other club literature) to inform collectors on the many aspects of PNCs. Studies include scarce numbers, varieties, printing methods, market values, PNCs on mail, and more. Thank you for visiting, and we hope you'll join us!

## PNC<sup>3</sup> Regional Meetings

(no meeting notices received to publish this month)

### Want to Sponsor a Regional Meeting?

Contact Tony Bruno for suggestions. He can put you in contact with others who have taken on the task. Several members have made it a regular habit of promoting meetings in their area.

#### Regional Meeting Chairman

Tony Bruno, PO Box 624, East Lyme, CT 06333-0624; email, [tbbee@aol.com](mailto:tbbee@aol.com)

(PNC<sup>3</sup> meeting notices in this column are free. Please submit details to the Editor 3 months before the meeting.)

## PNC<sup>3</sup> Catalog Offerings Updated for 2015

On the wrapper for this issue you will find an order form for the latest offerings by the Catalog Committee. The lead item on the form is the section containing "**New Offerings**," followed by "**Re-Offered Publications**" and then "**Prior Publications**" available in limited quantities.

New publications include the annual update of PNCs issued in 2014, as well as the updated indices of all PNCs since 1981. Also included is a new chapter of the permanent catalog, titled "First Forever Flags 2010 – 2013," covering the 44¢, 45¢, and 46¢ values with a flag theme. For the first time, a chapter on the die varieties of contract printer CCL Label has been (please see page 39)

### Ernest Stein Turns 100 On March 4

PNC<sup>3</sup> member Ernest Stein, an active collector residing in a New Hampshire nursing home, celebrates his 100<sup>th</sup> birthday on March 4. He was recently asked, "To what do you attribute your longevity?"

"Good genes and luck," was his reply. In his teens, Ernest noted, he was struck by lightning during a job laying irrigation pipe. He also acknowledged that he was once stung next to his eye by a wasp, and was rushed to the hospital due to the resultant swelling. "A bad reaction," he described it.

Today he is afflicted with Parkinson's disease but said it hasn't been much more than a minor hindrance. He can still write fine.

Some snippets of Ernest's personal history: born in Massachusetts, he moved to Connecticut in 1940. He left high school during his first year there to go to work full-time. During World War II, he worked in lab development at a defense plant in Stratford, NJ, testing aircraft parts.

At one point, he also worked on parts for the new Sikorsky helicopters. (According to George Amick in *Linn's U.S. Stamp Yearbook 1988*, the U.S. Army bought its first Sikorsky helicopter in 1941. Over 400 were used during the war.)

Ernest was also asked, "What caught your interest in PNCs and led you to collect them?"

He previously collected U.S. plate blocks but stopped in the late 1970s due to the increased block sizes and expense. Later he read in *Linn's Stamp News* about the newly implemented plate # policy of 1981 and picked up PNC collecting as mint strips of three and four. He later switched to PS5s but kept the earlier strips without trying to replace them. Tom Maeder and Don Eastman were his favorite traders. At one point he was close enough to postmaster Don Eastman's NH PO that he accepted Don's invitation to browse the post office stock during lunch hour.

When asked what format(s) of PNCs he prefers, Ernest noted that in addition to mint strips of five, he also likes PNCs used and on FDCs. Besides PNCs, he also presently likes collecting military topicals of current U.S. issues.

by Bob Rabinowitz

When the USPS began placing plate numbers periodically on the bottom of coils in 1981, a quickly growing collector involvement occurred. Many of these were former plate block collectors who were disillusioned by the "biggie" plate blocks. These blocks of more-than-four had inundated collecting during the previous 13 or so years, requiring huge investments in album spaces and monies. Collectors sought out these new PNCs and enjoyed hunting for them at many post offices as different plate numbers appeared on a regular basis.

Dealers began accumulating these in big quantities, anticipating the growth in the market that did occur. In addition, small dealers lined up who never handled plate number material but saw an opportunity for nice profits.

Finally, others (let's call them accumulators or investors) began hoarding these PNCs in quantity, expecting a big payoff down the road. Some dealers, particularly those with good post office contacts and good contacts within Kansas City (the "Caves") could buy rolls of 500 or 3,000 of almost any plate number, cut out the strips, and quickly discount the postage at 5 - 10% or paste them and recover the funds, less 10%, from the USPS. (One can no longer do that.)

With new numbers appearing regularly (note, for example, the 20¢, 22¢, 25¢, 29¢, and 32¢ definitives), large quantities were assembled and some dealers, including yours truly, were always busy finding the numbers and getting the strips out of the rolls. Also stripping these out and putting them aside were postage users, not necessarily PNC collectors, just people who saw an opportunity to cash in down the road.

Lots of PNCs got out into the supply, in many cases far more than the demand market could absorb in a reasonable time when one considers the investors and accumulators. Some of the PNC enthusiasm waned, particularly when USPS's David Failor decided in 2008 to eliminate numbering coils consecutively with a change in plate or sleeve.

Now, all plate number digits are "1" except under unusual circumstances. The accumulators and investors slowly disappeared and quantities of PNCs from the last 34 years in dealer and investor hands dropped sharply. (please see page 30)

## Readers' Forum

**Inverted embedded bell, <49¢> Star-Spangled Banner.** Enclosed is a clipping of a PNC received on a birthday card envelope. What do you call the die cuts on it? – Carl Moore, Jr. #1856

*[The August, 2014 issue's Readers' Forum showed a <49¢> SSB with an embedded "bell top." In that case, as here, the serpentine die cuts are misaligned with the design, so the row separation section is moved down to reveal its "bell" shape.]*

*Note the August image shows the upright bell of the separation shape between two rows both die-cut with the "peak-valley" pattern. In contrast, this example shown at right illustrates the inverted bell (at upper left) from the case where the two rows are both die-cut as valley-peak. – Editor]*

**More wisps of ink.** After reading about John Himes' discovery of "wisps" of ink on his 10.9¢ Hanson Cab strip (*Readers' Forum, February*), I thought that it looked like lighter versions of the anomalies I've seen on some items in my collection.

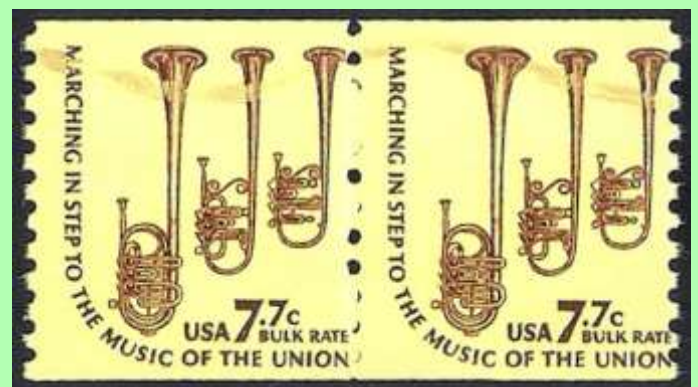
The Prominent American 1¢ Jefferson and the Americana 7.7¢ Saxhorns coil pairs each show what appears to be a slight smearing of ink that runs horizontally in a wave pattern. How or why this happens is tough to discern here. On an 18¢ Surrey #1 plate strip of 13 I own, though, there might be more information. (*Most of this strip is shown in color on the back page.*)

At position 8L (eighth stamp to the left of the



**<49¢>SSB embedded "inverted bell" found.**  
*(As this stamp's row and row above it were die-cut "valley-peak," the bell at upper-left is inverted.)*

numbered one), a large patch of ink is visible on the back wheel of the Surrey. This is where the heaviest of the ink trail can be seen. As the "wave" of smeared ink proceeds to the plate number, it becomes lighter until it is no longer visible at 1R. The smear, in fact, appears to end at the joint line. Could this be due to foreign matter on the plate after the excess ink has been wiped off of it prior to contact with the paper, then this is transferred onto the paper? Why then would there be this wave pattern? – Ray Beer #1614 (please see page 30)



**"Wisps" of ink evident on pre-PNC coil issues.** (*See back page for an 18¢ Surrey PNC #1 case.*)

(from page 28, Market for PNCs)

Making matters much worse was the USPS decision to halt accepting pasted scrap for redemption, making it much more difficult to get rid of scrap (particularly bulk rate stamps). While one can get a permit to use these on mail, dealers and collectors can't use them up fast enough. I still have most of the 25¢ Eagles I bought in rolls last year and no one wants them, even at reasonable discounts. And when the new 10¢ Presort Standard issue appears soon, the same situation will exist. Thus, large quantities of these PNCs will not flood the market.

What I see for the future is that the earlier inexpensive PNCs, will continue to be out there in quantity at current, attractive prices. But watch out for a continuum of shortages and price increases for the issues since 2008. *(Bob Rabinowitz is a longstanding PNC dealer, and formerly wrote about and dealt in plate blocks as early as the 1970s.)*

---

(from page 29, Readers' Forum)

After seeing the back pages of the January and February issues, I was all set to hopefully report that I had found the 25¢ Honey Bee "clipped leaf" (but no such result yet).

It might be that all the other stamps with plate number 2 (in the other rows printed on the paper web) might be normal. I bought a collection that included the BEP souvenir card given to the employees who worked on the "Bee" production, but haven't been able to check all of my holdings.

When the USPS still had the coil dispensing machines I used to "play" the machines to see what I could get. In the 1990s I especially went to get the "Variable Rate Coil" stamps until they quit those issues. What a mistake. I would travel 20 miles and spend \$50 to \$60 or even more at least once a week.

The question I have is, "what to do with all the excess postage?" I bought some nice plastic parts boxes with plenty of room to fit a roll of 100. Initially, the vending machine could be set up for any value – so 1¢ stamps were preferred as they would make up any odd rate.

Although I was a welder, I was able to be sent for training as a Vending Machine Mechanic in 1989 and again 2005. But by the latter time the machines were being removed.

One thing I've been wondering about. What percent of humidity is harmful to stamps? We've all attended auctions or rummaged stamp bourse albums and mint-postage lots for sale where the stamps are stuck to varying degrees. – *John Shue #910L*

## Membership Update

### New Applicants

Joseph C. Coulbourne (2268)  
1532 Lakeview Parkway  
Locust Grove, VA 22508  
[josephc427@aol.com](mailto:josephc427@aol.com)

Michael R. Rosenthal (2269)  
375 Timbermill Run  
Emmitsburg, MD 21727  
[springer11@verizon.net](mailto:springer11@verizon.net)

Albert E. Kremer, Jr. (2270)  
8367 SW 84<sup>th</sup> Loop  
Ocala, FL 34481  
[aekremer@live.com](mailto:aekremer@live.com)

Scott R. Mix (2271)  
1686 Heebner Way  
Lansdale, PA 19446  
[scottmix@comcast.net](mailto:scottmix@comcast.net)

James J. Hirstein (2272)  
5999 Cunningham Ct  
Florence, MT 59833  
[jhirstein@hotmail.com](mailto:jhirstein@hotmail.com)

Donald A. Tomlinson (2273)  
812 East Ave  
Park Ridge, IL 60068  
[elyminn@mac.com](mailto:elyminn@mac.com)

### Deceased

James E. Kenney (434L)

### Resigned

James E. Krome (2118)

### Dropped for Dues Non-Payment

Raymond Benzinger 555  
Teresa M Wajek 629  
Robert L Moskowitz M.D. 659  
Joseph Papaj 716  
Cameron Walker 739

(continued on next page)

## Classified Ads

**PNC used singles**, used strips, MNH PS5s. Great prices! Guaranteed quality! No hassles! Visit <http://www.angelfire.com/ca5/HimesPNCs> or send LSASE for lists to John Himes, PO Box 453, Cypress, CA 90630-0453. Please specify what you collect. Or e-mail [johnwhimes@yahoo.com](mailto:johnwhimes@yahoo.com). Member 957L

**CLASSIFIED AD** rates are 6¢ per word, with a minimum cost of \$3.00 per insertion.

(Only members may advertise in *Coil Line*.)

**PNC<sup>3</sup> members** are entitled to two free 50-word ads per year. (There is a 10¢ charge for each word over 50 with free ads.) Contact the editor to place an ad (see page 26).

### Mailing List Available

Rental of the club mailing list is available upon request. A one-time usage fee of \$50.00 includes preprinted address labels. Contact Richard Beecher, Secretary. Email: [richardlater@aol.com](mailto:richardlater@aol.com) or see page 26 for more contact methods.

Names of applicants are published for review. A member who questions the suitability of a prospective member should contact the Membership Committee Chair Michael Conway with the objection ([mjcconway@hotmail.com](mailto:mjcconway@hotmail.com) or (203)268-5896.) Applicants are accepted as members one month after notice if no objection is made.

<b>Previous Membership Count</b>	<b>524</b>
<b>New Applicants</b>	<b>6</b>
<b>Dropped for Dues Non-Payment</b>	<b>-38</b>
<b>Deceased</b>	<b>-1</b>
<b>Resigned</b>	<b>-1</b>
<b>PNC<sup>3</sup> Membership Count</b>	<b>490</b>

### ***Coil Topics Index this issue...***

PNCs, market for, analysis.....	28
2014 Star-Spangled Banner C11111, embedded "inverted bell" die cut.....	29
18¢ Surrey #1, long strip, "ink wisp".....	29
2014 Star-Spangled Banner C11111 colors.....	40

## Display Advertising Rates *Coil Line*

• Full Page	\$ 100.00
• Half Page	\$ 80.00
• Third Page	\$ 65.00
• Quarter Page	\$ 45.00
• Sixth Page	\$ 35.00
• Eighth Page	\$ 20.00
• Back Cover	Add \$ 50.00
• Inside Cover	Add \$ 25.00
• Color Ad (for full page)	Add \$ 100.00
• Color Ad - Electronic Version	Add \$ 25.00

(Discounts available for multiple insertions.)

(from page 30, "dropped for dues non-payment")

Hermann A Kohlmeyer	856
Roland Abate Jr	998
Stephen J West	1085
Joan Porter	1124
Sy Bricker	1195
Philip Heck	1211
John H O'Hearn III	1294
Justin R Gordon O.D.	1309
Daniel C Hein	1422
Donald M Bates	1447
Elden L Rhode	1468
John H Peters	1501
Richard A Germain Sr	1618
Larry J Ackerman VMD	1687
Robert J Kepley	1726
Patrick Andreotti	1735
Lorne A Wilson	1771
Nello J Cristiano	1880
Kenneth B Grant	1896
John L Bilski	1900
Norvan R Fulton	1903
Douglas Walker	1914
Michael Peretz	1929
Paul Bravell	2015
Steven E Scarbrough	2024
Dale Caudle	2051
Kurt Albrecht	2117
William B Kutsche	2154
Frederick E Gesser	2194
Lambert R Dumask	2210
Joseph G Leadon M.D.	2259
Julian W Jakubson	2260
Peter Lirot	2267

Contact John Himes (see page 26) to renew.

### Terms & Codes Used

1. Numbers in ( ) indicate **total** number of items in lot; [ ] = number of items within a *subset* of the lot.
2. All lots are listed with a minimum starting bid and bids must conform!
3. For precancel strips: If has gap, it's listed; no listing=NO GAP!
4. In case of a tie bid, the **earliest** postmark or email date wins.
5. All winning bids will be at one bidding increment over the second high bidder.
6. I will not accept phone bids; bids must be only via mail and email! (**Please find Bid Sheet on wrapper for mail use.**)
7. R = right, L = left, HVY = heavy, Lt = light, BMC = black machine cancel, PMC = purple machine cancel, FDC = first day cover or cancel, S# = plain strip, P = position, RHC = red hand cancel, BHC = black hand cancel, @ = at, btm = bottom, cvr=cover, [cvr]=with window, rtn=return, Rec'd = Received, SCV = Scott Catalog Value, VAL = PNC<sup>3</sup> Values List.
8. ALL Bids must be in the auction director's hands by the closing date **Saturday, March 28, 2015** and not just postmarked by then!
9. Bids not conforming to the bidding increments will be lowered according to the proper increment.
10. "Buy Bids" will be accepted, but realize that only one Buy Bid can be honored and that is the *first* one, and at only one advance over second high bidder.
11. IF you add a "+" (plus sign) to your Bid, I will use it to break a tie only if needed.
12. Please, when placing a bid over the Internet, DO NOT use a spreadsheet or other such program as I have problems opening them. Just place it in standard email form. Once placed, please do not mail a confirming copy. The email address to send your bids to is [PNC3auctions@aol.com](mailto:PNC3auctions@aol.com). No phone bids, please!
13. If you need to call me with questions on a lot but NOT to place a bid, please call after 9 a.m. Chicago time. (773) 622-0663.

## BIDDING INCREMENTS

**\$1.00 TO \$4.75 = .25**  
**\$5.00 TO \$9.50 = .50**  
**\$10.00 TO \$49.00 = 1.00**  
**\$50.00 TO \$97.50 = 2.50**  
**\$100.00 TO \$495.00 = 5.00**  
**\$500.00 AND OVER = \$10.00**

"I would like to thank all the members that have donated lots for this auction and future ones, since I always seem to have a backlog of them from auction to auction. Please bid on these as they help keep your dues as low as they are. Good luck in this auction to both sellers and bidders."

--Joe Sedivy,  
 Auction Director

Email: [PNC3auctions@aol.com](mailto:PNC3auctions@aol.com)

**\* Bid Sheet is on inside of cover wrapper.\***

Lot #	Item	Description	Min. Bid	Lot #	Item	Description	Min. Bid
<b>A. ===== Mint # Singles &amp; Pairs =====</b>				<b>C. ===== Mint Plate # Strip of 4 =====</b>			
1	2912A	(25¢) Jukebox, PS-1, #S22222, VF	\$1.00	16	4132	(41¢) NDN Flag, S-4, NO #, VF/XF, white seam line between stamps 2-3	3.00
2	2912B	(25¢) Jukebox PS1 #222222 round diecut, VF	2.00	<b>D. ===== Mint Plate # Strips of 5 =====</b>			
3	2915A	32¢ FOP, PS-1, "#9", S/E @L, RARE of split #, F/VF (PIC)	50.00	17	1891	18¢ Flag #2 VF/XF mark on gum from mount	5.00
4	1907	18¢ Surrey, PS-2, #4, VF/XF, line VF	5.50	18	1895	20¢ Flag, #4, XF/S (PIC)	100.00
<b>B. ===== Mint Plate #Strips of 3 =====</b>				19		#6, VF	24.00
5	1891	18¢ Flag #6 VF minor gum mark from mount	250.00	20	1895b	20¢ Precancel, #14, XF	16.00
6	1895b	20¢ Flag P/C, #14, F/VF	7.00	21	1897	1¢ Omni, (6), complete set of #s 1-6, F/VF, lines F/VF-XF	1.25
7	1903	9.3¢ Mail Wagon, #1, VF, line VF/XF	2.00	22		(4), #2,4,5,6, F/VF, lines VF	1.00
8	1904	10.9¢ Hansom, #2, F/VF, line XF	8.00	23	1897A	2¢ Loco, (6), complete set of #s, 2-4, 6,8,10, VF, lines VF/XF	1.25
9	1904a	10.9¢ Hansom #2 P/C VF, line S, gap ½L, no report of gap in mint, only as used single	160.00	24		(4), #3,4,8,10, VF, lines VF, #10 top clip tag break@3L	1.50
10	2005	20¢ Consumer, (2), #1, VF/XF, line VF, #2, VF/XF, line XF-S	1.25	25	1898A	4¢ Stage, (2), #5&6, VF, lines VF	2.00
11		#2, VF-XF, line VF/XF	4.50	26	1898Ab	4¢ Stage P/C, #3, gap 2L, XF, line XF, VAL \$6.50	3.00
12		#3, F-VF, line VF/XF	1.25	27		#4, F/VF, line F/VF, gap 2L, VAL \$6.50	3.00
13	2115	22¢ Flag, #20, VF, tag block 19x 22-½mm	10.00	28		#5, VF, line VF, gap 1L, VAL \$6.50	3.00
14	2123a	3.4¢ Bus P/C, #1, XF/S, line VF-XF, line gap	80.00	29		#6, VF, line VF, line gap, VAL \$6.50	3.00
15	3632A	37¢ Waving Flag, #S3333, VF/XF	2.50				

# ... PNC<sup>3</sup> Spring Auction # 52 ...

Joe Sedivy, auctioneer

Lot #	Item	Description	Min. Bid	Lot #	Item	Description	Min. Bid
30		#6, VF- line VF/XF, gap 1L, VAL \$6.50	\$3.00	61	(2)	#2228, 4¢ Stage, #1, #2228a, 4¢ Stage, #1, both VF.XF	3.00
31	1899	5¢ Motorcycle (4), #1-4, F/VF, lines VF, #3&4 have bottom clip tagging break @2L	2.00	62	2252	3¢ Conestoga, (5), #1, #2252a, #2&3 dull gum, #5&6 shiny gum, all VF/XF	5.00
32	1900a	5.2¢ Sleigh, #6, VF, line XF/S	4.00	63	2255	7.6¢ Carreta, (3), #1-3, XF-S	3.00
33	1901	5.9¢ Bike, (2), #3 & 4, F/VF, close @R, lines F/VF	1.75	64	2257b	10¢ Canal Boat, (2) #3, #2257¢, #5, both VF	5.00
34	1901a	5.9¢ Bike P/C, #6, VF, line F/VF, line gap	45.00	65	2258	13¢ Police W. P/C, #1, XF	2.00
35	1903a	9.3¢ Mail W. P/C, #4, VF/XF, line VF/XF, line gap	18.00	66	2259	13.2¢ CoalCar, (2), #1&2, XF-S	2.50
36		#4, F/VF, line VF/XF, gap 1R	20.00	67	2260	15¢ Tug, #1, VF	1.00
37		#4, XF, line VF, gap 2R	2.50	68	(2), #1, F/VF, #2, XF	2.00	
38	1904a	10.9¢ Hansom P/C (2), #3&4, XF/S, lines VF/S	190.00	69	2280a	25¢ Yosemite, #1, prephos. VF	5.00
39	1906	17¢ Auto, (7), complete set of #s 1-7, F/VF-XF, lines F/VF-XF	12.00	70	2452B	5¢ Circus W. #A1, XF, low gloss gum	0.25
40	1906a	17¢ Auto P/C, (2), #5&6 B-A, XF, lines XF, gap 1L	50.00	71	(6)	#2452 #1&2, #2452D, #S1, #2452b, #A1&A2, #2452Dg, #S2, all VF, 5¢ Circus Wagons, #S2 bottom pink #on# 04570	4.75
41	1907	18¢ Surrey, (2), #5&6, VF/XF, lines VF/XF	4.00	72	2454	5¢ Canoe, #S11, XF, low gloss gum	2.00
42		#6, F/VF close @R, line F/VF	0.75	73	2463	20¢ Cog Railroad, #1, XF-S	1.50
43	1908	20¢ Pumper, (3), #5,9,10, XF, lines VF/XF	4.50	74	2464	23¢ Lunch Wagon, #3, VF, dull gum	2.00
44		(3), #5,12,14, VF, lines VF/XF	5.00	75	2464a	23¢ Lunch W. #3, VF, dull gum, mottled tagging	4.50
45		(2), #5&13, F/VF perfs close @R, lines F	1.75	76		#4, VF/XF, mottled tagging shiny gum	4.50
46	2115	22¢ Flag, #14, XF/S, tag block 19x22	15.00	77		#4, VF, shiny gum	7.50
47	2123a	3.4¢ Bus P/C, #5, S, lines XF	1.25	78	2466	32¢ Ferryboat, #3, XF, shiny gum	3.00
48		(2), #1, VF, line VF, #2, XF, line S, both line gap, both missing periods @1R and just a trace of it @2R, VAL for this is \$737.50	75.00	79		#5, VF/XF, low gloss gum	4.50
49	2125	5.5¢ Star Truck, #1, XF	1.00	80	2468	\$1 Seaplane #1, VF/XF	6.50
50	2125a	5.5¢ Star Truck P/C, (2), #1&2, XF	1.75	81	(2)	#2468 #1, #2468b #3, shiny gum, both XF/S	12.00
51	2126a	6¢ Tricycle P/C, (2), #1&2, XF	3.25	82	2491	29¢ Pine Cone, #B1, VF-XF	5.00
52	(3)	#2127, XF/S, 2127a,F/VF, 2127b, VF/XF, 7.1¢ Tractor, all #1	2.00	83	2523	29¢ Rushmore, (2), #3, VF, 3 short perfs @L, #7, XF	2.75
53	2128	8.3¢ Ambulance (2), #1&2, XF-S, lines XF-S	1.50	84	(2)	#2529a, 19¢ Fishing Boat, #A7779, #2529C, #S111, both XF	5.50
54	2128a	8.3¢ Ambulance P/C, (2), #1&2, XF-S, lines XF-S, line gaps	1.75	85	2598b	29¢ Eagle, #111, VF, liner upside down	5.00
55	2130	10.1¢ Oil Wagon, #1, VF/XF	1.00	86	2602	(10¢) E&S,(4), #A33333, A33335, A34424, A34426, VF/XF	4.75
56	(3)	#2130, 10.1¢ Oil W, #1,VF, (2) #2130b, #2&3, VF	4.75	87		(6), #A43324, A43325, A43326, A43334, A43335, A43426, VF/XF	5.50
57	2130b	10.1¢ Oil Wagon P/C, #2, XF/S	1.00	88		(4), #A77777, A88888, A99999, A1010101010, VF/XF	5.00
58	2132b	12¢ Stanley P/C, #1, VF/XF	6.00	89		(4), #A1011101011, A1011101012, A1110101010, A1111101010, VF	5.00
59	2133	12.5¢ Pushcart (2), #1, XF, #2, VF	3.50	90		(4), #A111111010, A1211101010, A1411101011, A1412111110, F/XF	5.00
60	2134b	14¢ Iceboat, #2,VF/XF	1.75				



**detail of Lot 3**  
(see also front cover)

**Lot 18**



Lot #	Item	Description	Min. Bid	Lot #	Item	Description	Min. Bid
	(con't)	..... Mint Plate # Strips of 5 .....					
91	2605	<b>23¢</b> Presorted Flag, (6), all known #s, XF/S	\$11.00	133	3270	<b>(10¢)</b> E&S, (2), #11111, small date, #22222, large date, VF	5.00
92		<b>#A222</b> w/fat red 2, XF/S	1.75	134	3281c	<b>33¢</b> FOC, (2), #3333 & 3433, F/VF	6.50
93	2609	<b>29¢</b> White House, (3), #7,11,14, VF/XF, #14 two short perfs @L	4.50	135		<b>(2)</b> #5555, small date & #7777 large date, VF	6.50
94	2813	<b>29¢</b> Love, #B1, VF-XF	5.00	136	(2)	<b>#3281</b> , 33¢ FOC, #6666, #3281c, 33¢ FOC, #5555, both F/VF	5.50
95	2888	<b>(25¢)</b> G Flag Blue background, #S11111, VF	1.50	137	3281	<b>33¢</b> FOC, (2), #6666 & 7777, VF	6.50
96	2890	<b>SAME</b> but XF-S	1.50	138		<b>(2)</b> , #7777 & 8888, F/VF	5.50
97		<b>(32¢)</b> Blue G Flag, (6), #A1111, A1212, A3433, A4426, A5327, A5427, VF/XF, #A4426 2 short perfs @L	13.00	139	3282	<b>33¢</b> FOC S/A w/spaces, (2), #1111 & 2222, both square die cut and random aqua back # no # on #, VF/XF	7.00
98		<b>#A1314</b> , XF	1.75	140	3305a	<b>33¢</b> Berries, (2), #B2211 & B2222, XF	7.50
99		<b>(2)</b> , #A1324 & A2214, XF	5.50	141	(2)	<b>#3452</b> , NDN Liberty WAG, #1111, #3453, NDN Liberty S/A #1111 both XF	6.50
100		<b>(2)</b> , #A2213 & A3113, XF/S	5.00	142	3465a	<b>(34¢)</b> NDN Lilies, #B1111, XF/S	14.00
101	2892	<b>Red</b> G Flag, (2), # S1111 & S2222, XF, roulette type	6.50	143	(2)	<b>#3475A</b> 23¢ Wash. #B11, #3617, 23¢ Wash. #V22, both XF, #V22 Knoll @top Left	5.50
102	(2)	<b>#2891</b> #S1111, #2892, #S2222, VF	4.00	144	3481a	<b>34¢</b> Lilies, (2), #B2122 & B2211, XF	7.50
103	(6)	<b>#2902</b> , (5¢) Butte #S111, S222, S333, #2903 (5¢) Mountain #11111, #3207 (5¢) Wetlands #S1111, #3229 (10¢) Bike #S111, all are XF	4.75	145	3770	<b>(10¢)</b> Atlas S/A w/spaces, #V12111, VF/XF, Rare #	40.00
104	2905	<b>(10¢)</b> Auto, (3), #S111, S222, S333, VF, small, med., large dates	4.50	146	3829	<b>37¢</b> Egret S/A, (2), #V2111 & V3212 both vp/pv, VF/XF, black 2 is printed on top of dark blue 1	6.50
105	2913	<b>32¢</b> FOP, W/A, (2), #22221, 99969, F/VF	6.50	147	4287a	<b>42¢</b> State Flags, PS-5, #S1111111, plus mint single #4273, plus a used single on piece of #4273 plate # S1111111, VF on mint PS-5 backing paper does not go beyond perfs	3.50
106		<b>#22322</b> , VF	2.75	148	4297a	<b>44¢</b> State Flags, PS-5, #S1111111 plus a used single on piece of #4293, VF/XF, backing paper does not go beyond perfs	2.50
107		<b>(2)</b> , #33333 & 44444, XF	5.00	149	CV31	<b>29¢</b> Variable Rate Shield, #1, old font dull gum, VF/XF	3.75
108	(3)	<b>#2913</b> , (2) #11111, 44444, #2915A, #23222, 10x10 pv/vp, VF	8.00	150		<b>SAME</b>	8.00
109	2915	<b>32¢</b> FOP w/spaces, #V11111, VF	5.00	151	CV32	<b>19¢</b> Variable Rate Shield, #A11, VF/XF	10.00
110	2915A	<b>32¢</b> FOP S/A, (2), #45444 & 99999, 10x10, pv/vp F/VF	6.50	152		<b>Bulk</b> lot of \$6.36 face coils ideal postage for permit users, all mint service inscribed type stamps, a few w/PNC #s noted, F/VF	3.00
111		<b>(2)</b> , #66666 & 78777, 11x10, pp/vv, F/VF	6.00		<b>E.</b>	<b>=== Mint Plate # Strips of 6 or Longer ===</b>	
112		<b>#87898</b> , 11x10, pp/vv, F/VF	3.75	153	1891	<b>18¢</b> Flag PS-9, #3, VF/XF, small black mark @top of stamps @3L&R	125.00
113		<b>#88898</b> , VF, 10x10, pv/vp	25.00	154	1900a	<b>5.2¢</b> Sleigh P/C, PS-8, #2, gap 3R, VF, line XF, PNC	10.00
114		<b>#88898</b> , F/VF, 10x10, pv/vp	52.50	155		<b>PS-12</b> , #3, XF, line XF/S, gap 6R, VAL \$150.00 as a PS-10	60.00
115		<b>#89888</b> , 11x10, pp/vv, VF/XF	7.00	156		<b>PS-12</b> , #3, gap 5L, XF-S, line VF	12.00
116		<b>#78777A</b> , 10x10, pv/vp, F/VF	6.00	157		<b>PS-9</b> #4 XF line S, gap 3L, VAL \$22.50 as PS-8	11.00
117	2915C	<b>32¢</b> FOP S/A, #55555, 12x12, vp/pv, F/VF	13.00	158		<b>PS-10</b> , #4, VF, line XF/S, gap 3½L, VAL \$22.00 as PS-9	10.00
118	2915D	<b>32¢</b> FOP S/A w/spaces #11111 9x10 vvpv VF	3.50	159		<b>PS-8</b> , #4, VF, line VF, gap 4-1/8L, VAL \$300.00 as PS-9	125.00
119	(2)	<b>#3053</b> , 20¢ Blue Jay, #S1111, #3475, 21¢ Bison, #V1111, both VF	5.00	160		<b>PS-11</b> , #5, VF/XF, line XF, gap 4R, VAL \$475.00 as PS-9	225.00
120	3054	<b>32¢</b> Yellow Rose, (2), #1122 & 2222, F/VF	6.00	161		<b>PS-12</b> , #5, XF, line VF/XF, gap 6R, VAL \$150.00 as PS-11	65.00
121		<b>(2)</b> , #5555, XF, #7777, VF	6.50				
122	3055	<b>20¢</b> Pheasant S/A, #1111, VF/XF	1.50				
123		<b>(2)</b> , #1111 & 2222, VF	5.00				
124	3133	<b>32¢</b> FOP linerless, #M11111, VF/XF	2.50				
125		<b>SAME</b> but VF	2.50				
126	3208	<b>(25¢)</b> Diner, #S11111, VF/XF, small holes, bottom pink #02420 on position II	2.00				
127	(2)	<b>#3263</b> , 22¢ Uncle Sam S/A, #1111, #3353, 22¢ Uncle Sam WAG #1111, both VF/XF	5.50				
128	3264	<b>(33¢)</b> H Hat, (2), #1111 & 3333, VF/XF	6.50				
129		<b>(2)</b> , #3343 & 3444, XF	7.00				
130	3265	<b>(33¢)</b> H Hats S/A, (2), #2222 & 3333, F/VF	6.50				
131		<b>#2222</b> , XF, <i>not PS-5</i> due # is on 4th stamp so this is PS-3 w/2 extra stamps @L still XF	2.50				
132	3266	<b>(33¢)</b> H Hat S/A w/spaces, #1111, VF	5.50				

# ... PNC<sup>3</sup> Spring Auction # 52 ...

Joe Sedivy, auctioneer

Lot #	Item	Description	Min. Bid	Lot #	Item	Description	Min. Bid
162		<b>PS-12</b> , #5, XF, line XF/S, gap 6L, VAL \$150.00 as PS-10	\$60.00	188		<b>PS-10</b> , #2, XF/S, line XF/S, gap 3R, of row 3 of mat, shows double line break in bottom line only, PNC price \$125.00	60.00
163		<b>PS-9</b> , #6, VF, line VF, gap 3L, VAL \$22.50 as PS-8	11.00	189		<b>PS-8</b> , #5, XF/S, line XF, gap 1R, of row 4 of web shows double line break in both lines, VAL \$15.00 as PS-5	8.00
164		<b>PS-10</b> , VF, line XF/S, gap 3-1/2L, VAL \$22.00 as PS-9	10.00	190		<b>PS-8</b> , #6, XF, line XF, gap 2-7/8R, of row 4 of web shows double bar break in both top & bottom lines price sheet \$350.00	100.00
165		<b>PS-8</b> , VF, line VF, gap 4-1/8L, VAL \$300.00 as PS-9	125.00	191	2131	<b>11¢</b> Stutz, (2), PS-7, #3&4, VF, lines VF	2.50
166	1901a	<b>5.9¢</b> Bike P/C, PS-12, #3, gap 5R, VF/XF, line VF/XF, VAL \$500.00 as PS-10	200.00	192	2252a	<b>3¢</b> Conestoga, (2), PS-7, #3&6, VF, untagged	1.00
167		<b>PS-18</b> , #3, XF/S, line S, (2) gaps 6L & 6R, not priced in PNC list like this, only as a gap L or a gap R, this is show piece	60.00	193		<b>PS-7</b> , #5, VF/XF	5.00
168		<b>PS-12</b> , #4, gap 5R, XF/S, line VF/XF, PNC list \$500.00 as PS-10	200.00	194	2261	<b>16.7¢</b> Popcorn W., PS-7, #1, VF	2.00
169	1903a	<b>9.3¢</b> MailWagon P/C, PS-10, #1, F/VF, line F/VF, gap 3-3/4L, Type I paper, VAL \$95.00 as PS-9 gap 4L	20.00	195	2265	<b>21¢</b> R.R. Mail Car, PS-7, #2, XF	2.50
170		<b>PS-10</b> , #2, F/VF, line F/VF, gap 3-3/4L, type I paper, VAL \$95.00 as PS-9 gap 4L	20.00	196	2254	<b>5.3¢</b> Elevator, PS-7, #1, VF	1.00
171		<b>PS-9</b> , #5, gap 3-1/2L, VF/XF, line XF, VAL \$1000.00	250.00	197	2281	<b>25¢</b> Bee, PS-7, #2, VF/XF, red/blue seam line @ 1L, of "C" press, wide tagging block 20x23mm w/round corners	8.00
172	1904	<b>10.9¢</b> Hansom, PS-7, #2, VF, line F/VF, foot of plate #2 foot underinked, small pink ink spot on bottom rear of middle stamp shows faint on face	5.50	198	2431	<b>25¢</b> Eagle, PS-7 vert. w/spaces as sold only by Cave, has blue & red squares @back of liner at 3rd of bottom, XF/S	5.00
173		<b>PS-7</b> , #2, F/VF, line VF	10.00	199	2457	<b>10¢</b> Tractor Trailer, PS-7, #1, VF	1.50
174	1904a	<b>10.9¢</b> Hansom P/C, PS-6, #4, F/VF bit low & R, line F, line gap	40.00	200	2458	<b>10¢</b> Tractor Trailer, PS-7, #11, VF/XF	2.50
175	1906a	<b>17¢</b> Auto P/C, PS-8, #7A, VF/XF, line VF/XF	7.00	201	2602	<b>(10¢)</b> E&S, PS-7, #A34426, XF/S	1.00
176		<b>PS-10</b> , #3A, XF, line XF/S, gap 4L, VAL \$12.75	8.00	202		<b>PS-7</b> , #A32333, XF/S	95.00
177		<b>PS-10</b> , #4A, VF, line F/VF, gap 4L, VAL \$12.25 as PS-9	7.50	203	2605	<b>23¢</b> Presort Flag, PS-7, #A111, VF/XF	2.00
178		<b>PS-10</b> , #3BA, VF, line VF/XF, gap 4R	40.00	204		<b>PS-7</b> , #A212, VF	2.00
179		<b>PS-10</b> , #4BA, VF-XF, line VF, gap 4R	40.00	205		<b>PS-7</b> , #A222, XF, fat red 2	2.00
180		<b>(2)</b> , PS-6, #5BA, VF, line XF, #6BA, F/VF, line XF, both line gap	40.00	206	(2)	<b>2908</b> (15¢) Tailfin, PS-7, #11111, & 2909, #S11111, VF	2.25
181	1908	<b>20¢</b> Pumper, PS-8, #1, XF, line S	30.00	207	3208	<b>(25¢)</b> Diner, PS-7, #S11111, S	4.00
182		<b>PS-7</b> , #11, XF, line S	30.00	208	3228	<b>(10¢)</b> Bike, PS-7, #222, XF, round die cut	1.50
183	2123a	<b>3.4¢</b> School Bus P/C, PS-9, #2, XF, line XF/S, gap 2R, period almost missing on 3R, VAL \$24.75 as PS-7	12.00	209		<b>PS-7</b> , #333, XF, square die cut	1.50
184	2124a	<b>4.9¢</b> Buckboard P/C, PS-7, #1, XF/S, line VF/XF, gap 2R, of row 4 of mat shows double line break in both lines, VAL \$15.00	7.50	210	3264	<b>(33¢)</b> H Hat, WAG, PS-6, #1111, XF	4.00
185		<b>PS-8</b> , #1, XF/S, line XF/S, gap 3R, of row 2 of mat shows double line break in top line only, VAL \$125.00	60.00	211	3305a	<b>33¢</b> Berries, (5), PS-9, #B1111, B1112, B2211, B2221, B2222, all XF/S	35.00
186		<b>PS-9</b> , #2, VF/XF, line XF/S, gap 2R, of row 1 of mat, shows double line break in both lines, VAL \$15.00	7.50	212	3407a	<b>33¢</b> Berries, PS-9, #G1111, VF	18.00
187		<b>PS-8</b> , #2, XF/S, line F/VF, gap 3R, of row 2 of mat, shows double line break in top line only, VAL \$125.00	55.00	213	3481a	<b>34¢</b> Lilies, PS-9, #B2111, VF/XF	6.00
				214		<b>SAME</b>	6.50
				215		<b>PS-9</b> , #B2211, VF/XF	6.50
				216	3641a	<b>37¢</b> Steel Toys, PS-9, #B12222, VF/XF	5.50
				217	3683a	<b>37¢</b> Snowmen, linerless, PS-9, G1112, XF	14.00
				218	3770	<b>(10¢)</b> Atlas, PS-7, #V12111, rare #, VF/XF	45.00
				219	3801b	<b>(25¢)</b> American Eagle, PS-11, #S1111111, XF/S #on#, bottom back red #03260	3.00
				220	3829A	<b>37¢</b> Egret, PS-7, #P55555, XF	5.00
				221	4007a	<b>39¢</b> Crops, PS-10 w/header strip attached, #S1111, VF	7.00
				222	4247a	<b>42¢</b> Flags, PS-9, #V2222, VF/XF	6.00
						<b>F. ===== Imperfs =====</b>	
				223	1519	<b>10¢</b> Cross Flags, S-12 no gum, VF, creases in strip at each line of where perfs should be	5.00
				224	1895d	<b>20¢</b> Flag, PS-4, #8, VF, # on 2nd stamp of left, tag block is 19x22	60.00

**More Lots** ⇒ ⇒ ⇒

Lot #	Item	Description	Min. Bid	Lot #	Item	Description	Min. Bid
225		<b>PS-7, #5, VF bit high, looks imperf but blind perfs, tag block is 18-1/2x 21-1/2</b>	\$45.00		<b>I.</b>	<b>==== Constant Plate &amp; Mat Varieties ====</b>	
226	1897Ac	<b>2¢ Locomotive, PS-6, #3, F/VF bit high, VAL \$225.00 as PS-5</b>	90.00	243	1895b	<b>20¢ Flag P/C, PS-5, #14, XF-S, "Q" Variety</b>	35.00
227		<b>PS-6, #4, F/VF cut bit high, VAL \$225.00 as PS-5</b>	90.00	244	2125	<b>5.5¢ Star Truck, PS-5, #1, burned rubber scratch @2R</b>	10.00
228	2136a	<b>25¢ Bread Wagon, PS-6, #2, F/VF bit high not priced in VAL</b>	100.00	245	2602	<b>(10¢) E&amp;S, (7), PS-5, full set of Broken Yellow "1" numbers, all seven strips XF includes rare #A12213</b>	60.00
229		<b>PS-6, #2, F/VF close @top</b>	100.00	246	2915A	<b>32¢ FOP S/A PS-5, #88888, 11x10, pp/vv, VF-XF, brown dot, under date of stamp w/number, unlisted</b>	8.00
230	2265a	<b>21¢ Mail Car, PS-6, #1, XF-S, VAL \$300.00</b>	140.00	247		<b>PS-7, #9.9999, 11x10, pp/vv, VF/XF, period after 1st 9</b>	50.00
231	2280b	<b>25¢ Yosemite block tag PS5 #5, VF bit high</b>	110.00	248		<b>PS-8, #99999, 10x10, pv/vp, VF, split plate # 9999 on stamp 4, 5th brown 9 on stamp 5 in this strip/ Very Rare (PIC)</b>	950.00
232	4868a	<b>&lt;49¢&gt; 2014 Star Spangled Banner, Vertical strip of three imperf between rows, XF, NO#</b>	60.00		<b>J.</b>	<b>==== Tagging Varieties =====</b>	
	<b>G.</b>	<b>===== Mis-Perforated =====</b>		249	1897A	<b>2¢ Loco, (2), PS-7, #2&amp;6, VF, lines XF, type I paper, shows top, screw tag break @2 3/4L</b>	3.00
233	1908	<b>20¢ Pumper, PS-5, #1, VF-XF Horiz. Line n/a, perfs thru left side of "r" in Pumper, 2-1/2mm to left</b>	30.00	250		<b>(2), PS-7, #2&amp;6, VF, lines VF/XF, type I paper, shows Bar break at 2 3/4L</b>	3.00
234		<b>PS-5, #2, XF-S Horiz. Line n/a, perfs thru "e" of Pumper 3mm to left</b>	200.00	251		<b>(2) PS-7 #2&amp;6 VF lines VF/XF, type I paper, shows bottom screw tag break @2 3/4L</b>	3.00
235	2529	<b>19¢ Fishing Boat, PS-8, #A1111, VF vert, perfs shift to right 5mm between "1" &amp; "9"</b>	95.00	252	1899	<b>5¢ Motorcycle, (2), #3&amp;4, VF, line XF, type II paper, shows vert. tag break, bottom screw type @2 3/4L</b>	4.00
	<b>H.</b>	<b>===== Mis-Cut =====</b>		253		<b>(2), PS-7, #3&amp;4, VF, lines XF, type II paper, shows vert bar break 2 2 3/4L</b>	4.00
236	1897A	<b>2¢ Loco, PS-5, #8, F/VF vert, line XF, # split 10% top 90% bottom</b>	2.00	254		<b>(2), PS-7, #3&amp;4, VF/XF, lines XF/S, type II paper, shows vert. tag break top clip type @ 2 3/4L</b>	5.00
237	1901a	<b>5.9¢ Bike P/C, PS-5, #3, VF vert, line VF, # split 50/50</b>	9.00	255		<b>(2) PS-7 #1&amp;2 XF/S, lines XF untagged error</b>	700.00
238		<b>#4, VF vert, line XF, perfs bent @1,2,3, # split 50/50</b>	9.00	256	2228a	<b>4¢ Stage, PS-5, #1, XF, overall tagged w/vert tag brake near perfs @1L bump in center of brake line facing R</b>	5.00
239	1906	<b>17¢ Auto, PS-5, #5, F/VF vert, line F/VF, # 95% top no trace @btm</b>	3.50	257	2257b	<b>10¢ Canal Boat, PS-5, #4, XF, looks untagged, but a few tagging flecks visible</b>	20.00
240	1908	<b>20¢ Pumper, PS-3, #2, VF/XF vert, line VF, # split 50/50</b>	20.00				
241	2125	<b>5.5¢ Star Truck, PS-5, #1, VF-XF vert, # 100% top</b>	13.00				
242	2468	<b>\$1 Plane, PS-5, #1, XF vert, # cut 50/50</b>	7.00				

Lot 248 →  
(not to scale)



(not to scale)  
Lot 280 ↓



Lot #	Item	Description	Min. Bid	Lot #	Item	Description	Min. Bid
258	2257c	<b>10¢</b> Canal boat, PS-5, #4, XF/S, tagging gap @1L	\$2.00			on position 3 stamp in strip	
259	2260b	<b>15¢</b> Tug, PS-7, #2, XF/S, untagged error	100.00	285	3617	<b>23¢</b> Washington, PS-5, #V46, vp/pv, zigzag cut @L start of roll	1.25
260	2603b	<b>(10¢)</b> E&S, PS-7, #22222, XF/S, tagged error	275.00	286	3769	<b>(10¢)</b> Lion PS5 #S11111 VF super perf @1R	10.00
261	2903a	<b>(5¢)</b> Mountains, PS-5, #11111, XF/S, tagged error	20.00	287	3829	<b>37¢</b> Egret, PS-5, #V3222, VF, bell top left	10.00
262		<b>SAME</b> , but just XF	25.00	288		<b>PS-5</b> , #V3222, VF/XF, knoll top left	10.00
263	3632A	<b>37¢</b> Flag PS-5 #S4444, VF/XF, smooth tag	60.00	289	4132	<b>(41¢)</b> NDN Flag on Pole, PS-1, #P1111, VF/XF, brown ghost P1 over white P1	5.00
264	4141v	<b>26¢</b> Panther, PS-5, #S1111, XF/S, smooth solid tagging	65.00	290		<b>PS-20</b> folded in half, #P1111, VF/XF w/same ghost image as above single plus white seam line @14R	40.00
<b>K.</b>		===== # ON # =====		291	4134	<b>(41¢)</b> NDN Flag on Pole, (3), PS-1, #V1111, VF/XF, 1 pv, 1 bell top, 1 knoll top	3.00
265	2604	<b>(10¢)</b> E&S, PS-5, #S22222, low gloss gum, XF, center purple back #08660	2.00	292	4853	<b>&lt;49¢&gt;</b> 2014 Star-Spangled Banner, PS-7, #C11111, VF, embedded bell	7.00
266	3229	<b>(10¢)</b> Bike PS-5, #S111, VF, bottom pink #240	2.00	<b>M.</b>		===== Other Covers =====	
267	3271	<b>(10¢)</b> E&S, PS-5, #11111, VF/XF, top Aqua #4340	6.00	293	1897	<b>1¢</b> Omni, PS-3 #1, mis-cut 60% @btm no trace @top on 6x9 kraft cvr of stamp dealer w/many other stamps to make 60¢ rate BHC Mar 12, 2003, VF	1.00
268	3282	<b>33¢</b> FOC, PS-5, #2222, VF, top Aqua #4320 round die cut	10.00	294	1906a	<b>17¢</b> Auto P/C, S-1, NO#, B type precancel, on white [cvr] unopened #9 w/contents of Citicorp, yellow label "rtn to sender" unable to forward, cvr VF, stamp S/E @R	5.00
269		<b>(5)</b> PS-7, #2222, XF/S, each strip top aqua back #2060@2L, #2080@1L, #2100 #on#, #2120@1R, #2140@2R	25.00	295	2133a	<b>12.5¢</b> Pushcart, PS-1, #1, XF w/full perfs both sides, on #10 light gray [cvr] of Amex credit card, cvr VF/XF	3.00
270	3447	<b>(10¢)</b> Lion w/spaces, PS-7, (5), #S22222, XF, set w/top red back #s 04780 @2R, 04800 #1R, 04820 #on#, 04840 @1L, 04860 @2L	7.00	296	2226A	<b>2¢</b> Locomotive, PS-4, #2, tied to #10 white cvr by BMC along w/33¢ Hawk stamp, VF	2.50
271	4131	<b>(41¢)</b> Flag, PS-5, #S1111, VF/XF, bottom pink #2080	6.00	297	2452Dg	<b>5¢</b> Circus W. PS-5, # S2 plus S-3 of 2252a 3¢ Conastoga W. on a DAV reply cvr, unused, VF/XF	3.00
<b>L.</b>		===== Other Varieties =====		298	2457	<b>10¢</b> Tractor Trailer, PS-1 #1, tied to #8 grey [cvr] of Linn's Stamp News by spray cancel, VF/XF	1.00
272	2115	<b>S-3</b> , NO#, VF, missing bottom of "U" in USA on middle stamp	5.00	299	2602	<b>(10¢)</b> E&S, PS-1, #A88888, full perf @L short but there @R, on #9 white [cvr] w/red & orange color bars across top, of Harvard Graphics, overall VF	1.50
273	2123a	<b>3.4¢</b> Bus P/C, PS-8, #2, XF, line S, gap 1L, missing period after ORG @2R	5.00	300		<b>PS-1</b> , #A1110111010, full perfs on #10 white unopened cvr of Phoenix Investments, light bend going thru mail to U/R corner, VF	2.00
274		<b>PS-8</b> #2 F/VF, line VF gap 2-1/16R, missing period after ORG @3R, not listed in VAL	6.00	301		<b>PS-1</b> , #A1110101010, perfs short @R, on opened @ bottom, kraft [cvr] of Sports Illustrated, overall VF	1.00
275	2466b	<b>32¢</b> Ferryboat, PS-7, #5, XF/S, Color Error, Bronx Blue	60.00	302		<b>PS-1</b> , #A1412111111, full perfs both sides, on unopened gray #7 cvr of Sears, overall VF-XF	1.00
276	2523c	<b>29¢</b> Rushmore, PS-7, #7, VF, Color Error, Toledo Brown error	55.00	303	2603	<b>(10¢)</b> E&S, PS-1, #22222, on off white #10 [cvr] of DayTimer Solutions of Allentown PA, red hand stamped "Rec'd Jun 27, 1995" @front, VF	1.00
277		<b>PS-7</b> , #7, XF/S, Toledo Brown error	70.00	304		<b>PS-1</b> , #22222, full perfs @L, cut short but there @R, on #10 unopened off white [cvr] of Amex, docket @back Rec'd 7/25/94 <b>More</b> => =>	1.75
278		<b>SAME</b>	65.00				
279		<b>SAME</b>	65.00				
280	2602	<b>(10¢)</b> E&S, PS-6 #A43335, XF Horiz, imperf & misperf error, has only 3 perf holes along bottom of strip shifted 4mm to left thru left leg of "A" in USA, all others missing ( <b>PIC</b> )	95.00				
281	2609	<b>29¢</b> White House, PS-5, #15, VF, red eagle on flag pole	8.00				
282	3044	<b>1¢</b> Kestrel, PS-5, #1111 BYCM, XF, color shift making 5 blue loops under tail feathers of bird on 3 right stamps	2.00				
283	3053	<b>20¢</b> Blue Jay, PS-5, #S1111, VF, embedded cobra near top	3.00				
284	3208	<b>(25¢)</b> Diner, PS-10, #S11111, VF, pink dot on 1R, same color as back # 00550 which is	5.00				

# ... PNC<sup>3</sup> Spring Auction # 52 ...

Joe Sedivy, auctioneer

Lot #	Item	Description	Min. Bid	Lot #	Item	Description	Min. Bid
305	2605	<b>23¢</b> Presort Flag, PS-1 #A333 + 10¢ Lion & 4¢ Steam Carriage, tied by RHC to 6¾ white cvr, XF	\$5.00			unopened cvr with Highlands Ranch CO rtn address and blue & red Rec'd hand stamp Apr 15 2002 @front, overall VF-XF	
306	2607	<b>23¢</b> USA, PS-1, #1111, full perfs on #7 cream color [cvr] of Sports Illustrated, docket @back rec'd 1/9/93, VF	1.00	317		<b>PS-1</b> , #B1111, on white #10 cvr of Coil Line, w/blue & red Rec'd hand stamp Apr 26 2002 @front, overall VF	1.00
307		<b>PS-1</b> , #1111, full perfs @r cut short @L, on off white #10 [cvr] of Joslin's V.I.P. of Englewood, CO, opened @top and part of right side does not effect stamp, docket @back rec'd 3/31/93, VF	1.00	318	3617	<b>23¢</b> Washington, PS-1, #V35,p/v, tied to light blue 6x4 postcard of Excelsior collection w/ad for APS winter show, VF	1.00
308	2912	<b>(25¢)</b> Jukebox, PS-1, #S11111, full perfs @L, short but there @R on unopened #10 white/silver [cvr] of MBNA platinum plus of Delaware, overall VF	1.00	319	3770	<b>(10¢)</b> Atlas S/A PS-1, #V11111, on 6½x4-¾ unopened mostly white & gray cvr of Coastal Living w/blue & red Rec'd hand stamp Jan 16 2004 @front double struck, overall VF-XF	1.00
309	2912A	<b>(25¢)</b> Jukebox S/A, PS-1, #S11111, on unopened #10 white [cvr] of Day-Timer Inc. two red Rec'd handstamps w/Nov 23 1998 @front, overall VF-XF	1.00	320		<b>PS-1</b> , #V12222, on #10 white unopened cvr Pueblo CO w/docket @back rec'd 11/18/05	1.00
310	3207A	<b>(5¢)</b> Wetlands, PS-1, #5555, on grey #10 [cvr] of The Carter Center, XF	1.50	321		<b>PS-1</b> , #V21111 on 6x9-½ white cvr of Radisson Seven Seas Cruises w/blue & red Rec'd hand stamp @front Jul/2/2004, XF	1.00
311	3228	<b>(10¢)</b> Bike S/A PS-1, #444, on 6x9 unopened cream color of Hershey's Collectibles w/docket @back Rec'd 10/13/04, Round die cuts, XF	1.00	322		<b>PS-1</b> , #V21111, on unopened 6½ x 5 Ad Folded of Colorado Homes overall VF-XF	2.50
312	3264	<b>(33¢)</b> H Hat, PS-2, #1111, tied to 6x9 kraft cvr by RHC, VF/XF, crease down middle, cvr was folded	4.50	323		<b>PS-1</b> , #V33333, on 6½x 4-¾ white & pink ad cvr of Cottage Living, VF/XF	2.00
313	3265	<b>(33¢)</b> H Hat S/A, PS-1, #1111, tied to #9 white reply cvr opened @ L, by Oakland CA BMC of 27 Nov 1999, VF	1.00	324	3775	<b>(5¢)</b> Sea Coast, PS-1, #B111, tied to #7 cream color cvr of Republican Nat'l Comm. w/mailed precancel permit #23 ZIP 20110 cancel, docket @back Rec'd 3/15/2004, XF	2.00
314	3304	<b>33¢</b> Berries, (2), PS-1, #B2222, one on #10 white cvr opened @L, other tied to dark green 4-5/8 x 6¾ cvr, VF	1.50	325	3829	<b>37¢</b> Egret, PS-1, #V3222, tied to white #8 reply cvr to Paragon, Oakland CA 10 May 2004 BMC, full The Paragon ad @cvr back	1.00
315	3447a	<b>(10¢)</b> Lion S/A, PS-1, #S55555, on 6x9 unopened cream color [cvr] of Hershey's Collectibles w/blue & red Rec'd hand stamp Jul 25 2005 @front, overall XF	5.00	326	3874a	<b>(5¢)</b> Sea Coast S/A, PS-1, #P3333, on #10 white [cvr] opened @L, of Oral Roberts, VF	2.00
316	3520	<b>(10¢)</b> Atlas S/A, PS-1, #B1111, on white #10	1.00	327	3980	<b>39¢</b> Liberty, PS-1, #V1111, tied to #10 white cvr by Richmond VA 14 Oct 2006 inkjet, XF	5.00
				328	4157	<b>(10¢)</b> Banner S/A PS1 #V333, #10 blue cvr unopened of Pueblo CO addr, overall VF-XF	1.00
				329		<b>PS-1</b> , #V333, on unopened white #10 [cvr] of Lakewood CO, overall VF/XF	1.00
				330		<b>PS-1</b> , #V333, on 6½x4-¾ multi colored for BHC, XF	1.00

**New abbreviation:**  
 "[cvr]" = cover with window

Lot 336 →

Lot 341 (at far right)



Lot #	Item	Description	Min. Bid	Lot #	Item	Description	Min. Bid
331	4327a	<b>2012</b> Forever TX Flag, #S1111111, tied to white #10 cvr by Denver CO. inkjet of 19 Feb 2014, left perfs are wavy die cut looks like of start of roll, VF, c/c of dentist	\$1.00	364		<b>#18</b> , VF, Heavy Magenta hand cancel, # clear, tag block 17x21½	1.00
332	4495	<b>(5¢)</b> Art Deco Bird, PS-1, #P2222, on #10 white [cvr] of Christian Foundation for Children & Aging in KS, VF	1.00		<b>P.</b>	===== <b>USED PS-3</b> =====	
333		<b>PS-1</b> , #P2222, on #10 overall pink flower [cvr], VF	1.00	365	2128a	<b>8.3¢</b> Ambulance P/C, #4, F/VF, line VF	1.00
334		<b>PS-1</b> , #P3333, on 4¼x11 dark green cvr of Covenant House in New York City, VF	3.00		<b>Q.</b>	===== <b>USED PS-5s</b> =====	
335	4769a	<b>2013</b> Flag-All Seasons, PS-1, #V1111, tied to #10 white cvr by Denver CO inkjet of 29 May 2014, of Pueblo County Historical Society, VF	1.00	366	2518	<b>(29¢)</b> F Tulip, #1111, VF, light black roller cancel	75¢
	<b>N.</b>	===== <b>USED Singles</b> =====		367	2464	<b>23¢</b> Lunch W. #2, XF, light black roller cancel	75¢
336	1900	<b>5.2¢</b> Sleigh, #3, XF, full perfs, light black cancel	60.00		<b>R.</b>	===== <b>Miscellaneous</b> =====	
337		<b>#5</b> , XF, full perfs, light black cancel, top half of stamp untagged	55.00	368	2721	<b>29¢</b> Elvis, tied to Hand drawn cachet w/ glider FDC by Marvel Houge and signed, XF	6.00
338	1901a	<b>5.9¢</b> Bike P/C, #4, F/VF, full perfs	2.50	369	3306	<b>33¢</b> Daffy Duck sheet of 10 cut from press sheet, XF	7.00
339		<b>#5</b> , VF, full perfs, shows line gap	25.00		<b>S.</b>	===== <b>Club Donations</b> =====	
340		<b>#6</b> , VF, full perfs, shows gap 1/8L	25.00	370	2904B	<b>(5¢)</b> Mountains, S-2, NO#, XF/S, Top Aqua back #0000 left stamp backing paper	25¢
341	1903	<b>9.3¢</b> Mail W., #5, F/VF, full perfs, lt BMC	60.00	371	2112	<b>(22¢)</b> D Eagle, PS-3, #2, VF/XF, tagging shift up 2mm to right 4½mm	1.50
342		<b>#5</b> , F/VF, full perfs, light BMC	65.00	372	3281	<b>33¢</b> FOC, (3), PS-3, #6666, 1111A, 1111B, F/VF	6.00
343		<b>#6</b> , XF, full perfs, light BMC	75.00	373	2892	<b>(32¢)</b> Red G Flag, PS-5, #S2222, rouletted, XF/S	2.00
344	1903a	<b>9.3¢</b> Mail W. P/C, #4, F/VF, full perfs	5.00	374	2913	<b>32¢</b> FOP, PS-5, #33333, XF	2.00
345	1904	<b>10.9¢</b> Hanson, #1, F/VF, on piece, full perfs	5.00	375	3281	<b>33¢</b> FOC, PS-5, #4444A, F/VF	2.00
346	1904a	<b>10.9¢</b> Hansom P/C, #3, VF	25.00	376	3769	<b>(10¢)</b> Lion, PS-5, #S11111, VF/XF	1.00
347		<b>#3</b> , XF, full perfs, line gap	30.00	377	3775	<b>(5¢)</b> Sea Coast, PS-5, #B111, VF/XF	75¢
348		<b>#4</b> , VF/XF, full perfs	25.00	378	3864	<b>(5¢)</b> Sea Coast, PS-5, #S1111, XF	75¢
349		<b>#4</b> , F/VF, perf faults	3.00	379	3874	<b>(5¢)</b> Sea Coast S/A w/spaces, PS-5, #P2222, VF/XF	75¢
350	2466b	<b>32¢</b> Ferry Boat #5 Bronx Blue, XF, full perfs	40.00	380	(10)	<b>All</b> diff PNC singles on 10 cvrs most are #10, F/VF	1.00
351	2523c	<b>29¢</b> Rushmore, #7, Toledo Brown, perf faults, VF	60.00	381	(24)	<b>Mixed</b> used on piece red "G" flags #2889 & 2892, F/VF	75¢
352	2602	<b>(10¢)</b> E&S, (36) all diff #s, F/XF includes A12213	14.00	----- <b>end of auction</b> ----- <b>Bidding closes Saturday, March 28</b>			
353	2890	<b>(32¢)</b> G Flag, (2), #A1111 & A3314, VF	1.00	(from page 27, New catalog offerings) created. This is similar to chapter "Avery Die Cut Varieties," which is still available in limited quantities. The order form is quite descriptive, and orders placed on this form can be expected to ship within 60 days. The reason for the long shipping time is that the new publications are not printed until the approximate demand is known (to minimize leftover inventory). Orders can trickle in for nearly a month before the print quantity is determined. Printing, collating and packaging can take another couple of weeks, and then time in the mailstream is needed. If you need any of the reoffered or prior publications, please order early, as it will be "first come, first served" until the supply runs out.			
354		<b>(3)</b> , #A4427, VF/XF	1.50				
355	2911	<b>(25¢)</b> Juke Box, (2), #212222 & 332222, F/VF, both w/short perfs @R almost a S/E	1.00				
356	2915A	<b>32¢</b> FOP S/A, #88898, 10x11 vv/pp, F/VF, light BMC, this is a RARE die cut	450.00				
357		<b>#89899</b> , 10x10, pv/vp, medium BMC, VF, full perfs	75.00				
358		<b>#13231A</b> , 10x10, vp/vv, F/VF, rare die cut	200.00				
359	3055	<b>20¢</b> Pheasant, #1111, VF, on piece	75¢				
360	3304	<b>33¢</b> Berries, (4), #B1111, B1112, B2221, B2222, VF/XF	2.00				
361	3785b	<b>(5¢)</b> Sea Coast, #P2222, XF, die cut 4 sides, tagged error	25.00				
	<b>O.</b>	===== <b>USED Pairs</b> =====					
362	1891	<b>18¢</b> Flag, #6, F/VF, BMC, # on R stamp, 2014 SCV as single \$675.00	400.00				
363	1895	<b>20¢</b> Flag, #8, F/VF, Heavy Cancel # clear, tag block 17x22	1.00				



Member Peter Tukker has sent in close-up scans of various <49c> Star-Spangled Banner PNCs from CCL Label, from which these images were made. They make an interesting study of how the slightest ink misregistrations can alter a stamp's appearance.



The topmost example might be considered the "normal," as-intended appearance. Note the fully filled digits, and lack of yellow in the red and white stripes. This PNC at left shows shifted magenta and black inks, causing "red" stripes to show much yellow.



In this bottom example, the magenta and black inks again appear shifted in relation to the other colors, but in different directions. Now, the red stripes are only tinged with yellow at top, but the flagpole's yellow extends to its left and the star burst shows much more yellow streamers.



(from page 29, Readers' Forum) Part of mint strip, 18c Surrey plate #1 (with long, wavy "ink wisp" starting heavy at left and waning to right)

## PNC<sup>3</sup> PNC Catalog Chapters Order Form (March 2015)

The Plate Number Coil (PNC<sup>3</sup>) Catalog Committee is accepting orders from PNC<sup>3</sup> members for the new publications and re-offered publications listed below. These will be available as long as quantities last. Orders received in March can be expected to be filled within 60 days.

	<u>Quantity Ordered</u>	<u>Total Cost</u>
<b><u>A. New Publications</u></b>		
2014 New Issues: 33 pages		
Stamp Illustrations in Color	\$14.00	_____
Stamp Illustrations in Black & White	\$ 6.00	_____
2015 Cumulative PNC-ID Index, Cross Reference PNC ID and Scott Numbers Index, and Alphabetical Name Index (3 items), B&W, 65 pages	\$ 7.00	_____
First Forever Flags 2010-13 (<44>,<45>,<46>), 29 pages, illustrations in color	\$11.00	_____
CCL Die Cut Varieties, illustration in color, 10 pages	\$ 5.50	_____
<b><u>B. Re-Offered Publications</u></b>		
2014 Values List, <b>6<sup>th</sup> Edition</b> (PS5, PS3, Used Singles, Covers), 68 pages, black & white	\$ 6.00	_____
Flags Of Our Nation (FOON), 20 pages, illustrations in color	\$ 7.65	_____
PNC <sup>3</sup> Illustrated Glossary (26 pages including 1 page of color illustrations), <b>4<sup>th</sup> Edition</b>	\$ 4.50	_____
<b><u>C. Prior Publications Available in Limited Quantities</u></b>		
Precancel Gaps Values List (29 pages), black & white	\$ 4.50	_____
Avery Die Cut Varieties, <b>5<sup>th</sup> edition</b> , 29 pages, illustrations in color	\$10.50	_____
2011 New Issues: 21 pages		
Stamp Illustrations in Color	\$10.50	_____
Stamp Illustrations in Black & White	\$ 5.00	_____
2013 New Issues: 29 pages		
Stamp Illustrations in Color	\$12.00	_____
Stamp Illustrations in Black & White	\$ 5.25	_____
<b><u>D. Postage &amp; Handling</u></b>		
\$2.85 for first item ordered	\$ 2.85	
\$0.30 for <u>each</u> additional item ordered	\$_____	
Total Postage & Handling		_____
TOTAL REMITTANCE (U.S. FUNDS ONLY), payable to <b>PNC<sup>3</sup></b>		\$_____

Mail Order and Remittance to:

Andrew M. Jakes  
5203 Hayden Woods Ln.  
Hilliard, OH 43026-7473  
[pnctreasurer@aol.com](mailto:pnctreasurer@aol.com)

PNC<sup>3</sup> Member Number \_\_\_\_\_

Your Name (PRINT) \_\_\_\_\_

Your Mailing Address (PRINT) \_\_\_\_\_  
\_\_\_\_\_

e-mail address or evening telephone number \_\_\_\_\_