

PNC³ Auction #54 Official Bid Sheet

Terms & Codes Used

1. Numbers in () indicate **total** number of items in lot; [] = number of items within a *subset* of the lot.
2. All lots are listed with a minimum starting bid and bids must conform!
3. For precancel strips: If has gap, it's listed; no listing=NO GAP!
4. In case of a tie bid, the **earliest** postmark or email date wins.
5. All winning bids will be at one bidding increment over the second high bidder.
6. I will not accept phone bids; bids must be only via mail and email! **(Please find Bid Sheet on wrapper for mail use.)**
7. R = right, L = left, HVY = heavy, Lt = light, BMC = black machine cancel, PMC=purple machine cancel, FDC=1st day cover or cancel, S#=plain strip, **sh.=shoulder**, RHC= red hand cancel, BHC =black hand cancel, @ =at, btm =bottom, cvr=cover, [cwr]=with window, rtn=return, Rec'd=Received, SCV = Scott Catalog Value, VAL = PNC³ Values List.
8. ALL Bids must be in the auction director's hands by the closing date **Thursday, March 31, 2016** and not just postmarked by then!
9. Bids not conforming to the bidding increments will be lowered according to the proper increment.
10. "Buy Bids" will be accepted, but realize that only one Buy Bid can be honored and that is the *first* one, and at only one advance over second high bidder.
11. IF you add a "+" (plus sign) to your Bid, I will use it to break a tie only if needed.
12. Please, when placing a bid over the Internet, DO NOT use a spreadsheet or other such program as I have problems opening them. Just place it in standard email form. Once placed, please do not mail a confirming copy. The email address to send your bids to is PNC3auctions@aol.com. No phone bids please!
13. If you need to call me with questions on a lot but NOT to place a bid, please call after 9 a.m. Chicago time (773) 622-0663.

BIDDING INCREMENTS:

Bids \$0.25 to 4.75 -- **\$.25**
 5.00 to 9.50 -- **.50**
 10.00 to 49.00 -- **1.00**
 50.00 to 97.50 -- **2.50**
 100.00 to 495.00 -- **5.00**
 500.00 + -- **10.00**

**Bids must be in the hands
 of the auctioneer by
 Thursday, March 31, 2016**

NAME _____ PNC³ # _____
 Home Address _____ Home Phone () _____
 City _____ State _____ Zip _____
 Email Address _____
 Signature _____ (ALL SHEETS MUST BE SIGNED)

Please enter the following bids for me in this mail auction:

LOT #	BID	LOT #	BID	LOT #	BID	LOT #	BID	LOT #	BID	LOT #	BID	LOT #	BID

PLEASE CHECK YOUR BIDS CAREFULLY!

Please limit my purchase to \$_____. (Note! Limits under \$50.00 are respectfully declined. Bid limits will be executed in the order [vertically] that you bid the lots.)

Send complete SIGNED bid sheets to: **Joe Sedivy, PNC3 Auctioneer, P O Box 410602, Chicago IL 60641**
Email: PNC3auctions@aol.com

PNC³ PNC Catalog Chapters Order Form (March 2016)

The Plate Number Coil (PNC³) Catalog Committee is accepting orders from PNC³ members for the new publications and re-offered publications listed below. These will be available as long as quantities last. Orders received in March can be expected to be filled within 60 days.

	<u>Quantity Ordered</u>	<u>Total Cost</u>
<u>A. New Publications</u>		
2015 New Issues: 24 pages		
Stamp Illustrations in Color	\$10.25	_____
Stamp Illustrations in Black & White	\$ 6.00	_____
2016 Cumulative PNC-ID Index, Cross Reference PNC ID and Scott Numbers Index, and Alphabetical Name Index (3 items), B&W, 65 pages	\$ 7.50	_____
<u>B. Re-Offered Publications</u>		
First Forever Flags 2010-13 (<44>,<45>,<46>), 29 pages, illustrations in color	\$11.00	_____
CCL Die Cut Varieties, illustration in color, 10 pages	\$ 5.50	_____
Flags Of Our Nation (FOON), 20 pages, illustrations in color	\$ 7.65	_____
PNC ³ Illustrated Glossary (26 pages including 1 page of color illustrations), 4th Edition	\$ 4.50	_____
Precancel Gaps Values List (29 pages), black & white	\$ 4.50	_____
<u>C. Prior Publications Available in Limited Quantities</u>		
2014 Values List, 6th Edition (PS5, PS3, Used Singles, Covers), 68 pages, black & white	\$ 6.00	_____
Avery Die Cut Varieties, 5th edition , 29 pages, illustrations in color	\$10.50	_____
2011 New Issues: 21 pages Stamp Illustrations in Black & White	\$ 5.00	_____
2014 New Issues: 29 pages Stamp Illustrations in Color	\$ 12.00	_____
2007 New Issues: 47 pages Stamp Illustrations in Color	\$ 17.50	_____
<u>D. Postage & Handling</u>		
\$2.85 for first item ordered	\$ 2.85	
\$0.30 for <u>each</u> additional item ordered	\$ _____	
Total Postage & Handling		_____
TOTAL REMITTANCE (U.S. FUNDS ONLY), payable to PNC3		\$ _____

Mail Order and Remittance to:

Andrew M. Jakes
5203 Hayden Woods Ln.
Hilliard, OH 43026-7473
pnctreasurer@aol.com

PNC³ Member Number _____

Your Name (PRINT) _____

Your Mailing Address (PRINT) _____

e-mail address or evening telephone number _____

Our 29th Year

PNC³



Coil Line

Journal of the PNC³ www.pnc3.org
Plate Number Coil Collectors Club
American Philatelic Society Affiliate # 185

March 2016
Vol. 29, No. 3
Whole No. 333



◀ detail, auction lot 259

▲ detail, lot 258

▼ detail, lot 352



Auction lot 410 ▶
(◀ detail)



Second new Fruits issue ...
page 28 ▼



Auction lot 445
(detail ▼)



Auction lot 447



Auction lot 451



Also...

Garfield-Perry (Ohio) PNC³ meeting, **March 12...** page 27
PNC³ Catalog Committee Offerings... page 28
Catalog Corner: 10¢ Pears... page 30
Bid in the Spring Auction!... pages 31-38, 40

Tagging terms trouble...
page 29 ▶



Coil Line

Journal of the Plate Number
Coil Collectors Club (PNC³)

Published by: PNC³
ISSN: 1931-5112



Editor: Ronald Blanks
coilineditor@yahoo.com

Print Edition Mailings: Brian and Cory Snippen
snippenb@gmail.com

Digital Edition Emails: Frank Covey
ecoilline@comcast.net

Scott #2523 plate # 2 (issued March
29, 1991, 25 years ago this month)

PNC³ Contacts

PNC³ Website www.pnc3.org
Allan Clapp, Webmaster
email: webmaster@pnc3.org

(For *Coil Line*-related matters, please
see column at left for appropriate contact.)

Advertising Rates (one-time)

Full Page	\$ 100.00	Eighth Page	\$ 20.00
Half Page	\$ 80.00	Business Card	\$ 20.00
Third Page	\$ 65.00	Back Cover	Add \$ 50.00
Quarter Page	\$ 45.00	Inside Cover	Add \$ 25.00
Sixth Page	\$ 35.00	Color, full page	Add \$ 100.00

(For Color Ads, Digital Version only, Add \$25.00)

A check or money order, made out to **PNC3**, must accompany camera ready ad. Advertising copy must be submitted by the 1st of the previous month prior to the publication date. Please send all copy to Ronald Blanks, Coil Line Editor, PO Box 531, Windsor, VA 23487.

The Classified Ad rates are six cents a word per issue, with a minimum of \$3.00 per individual ad. (Two 50-word ads per year per member are available at no charge. There is a 10¢ per word cost for words over 50.)

All material, including articles submitted, will be edited and formatted for inclusion in **Coil Line**, and must be received by the 1st of the month prior to publication.

Coil Line reserves the right to edit copy as necessary.

Coil Line is published monthly and as a member benefit is available digitally with annual dues of \$14.00. Printed version of **Coil Line** is also available. To U.S. addresses, to receive printed edition add \$14.00 for Bulk Mailing; add \$22.00 for First Class Mailing. To Non-USA addresses, add \$27.00 for mailing. Past print issues of **Coil Line** available at \$2.50 per copy (quantities limited).

All material is copyright 2016. All rights reserved. Material in this publication may be copied or reproduced with acknowledgment to **Coil Line**. Opinions expressed by the authors and writers are their own, and do not necessarily reflect those of the editor, publisher, or membership of the Plate Number Coil Collectors Club.

All content matters, letters to the Editor, and advertising questions should be sent to **Coil Line**, c/o Ronald Blanks, PO Box 531, Windsor, VA 23487. Phone 757-478-8719; email: coilineditor@yahoo.com.
For mail delivery problems, contact the mailer below.

Postal mailings prepared by: Brian Snippen, PO Box 5542, Albuquerque, New Mexico 87185-5542. Email: snippenb@gmail.com. Phone: 505-404-1624.

Mailed from Zip Code 87185 on or near February 29, 2016.

Elected Officers

Robert Thompson, **President**, 12431 Golden Thistle, Houston, TX 77058. email: rthompson@pncvarieties.com 713-397-1772

Michael Mules, **Vice President**, PO Box 6, Salem, WI 53168. email: pnc5dealer@wi.rr.com 414-234-9867

Richard L. Beecher, **Secretary**, PO Box 4790, Blaine, WA 98231-4790. email: richardlater@aol.com 604-467-8700

John Himes, **Treasurer**, PO Box 453, Cypress, CA 90630-0453. email: johnwhimes@yahoo.com 714-826-8552

Gene Trinks, **Past President**, 16415 W. Desert Wren Ct, Surprise, AZ 85374. email: gctrinks@cox.net 623-322-4619

Jill Ambrose, **At Large**, PO Box 54622, Cincinnati, OH 45254-0622. email: jillambrose@zoomtown.com 513-231-4208

Melvyn Borofsky, **At Large**, 101 West Sterling Way, Leesburg, FL 34788-2781. email: melborofsky@comcast.net 352-483-1408

PNC³ Catalog Committee: Jill Ambrose, Frank Covey, Andy Jakes, Tom McFarland, Gene Trinks, Peter Tukker
PNC³ auctioneer: Joe Sedivy

Coil Line Production

editor: Ronald Blanks
digital edition producer: Jill Ambrose
senior consultant: Gene Trinks
technical consultant: Alan Thomson
writers:

Frank Covey, Doug Iams, Gene Trinks
contributing writers:

Rudy de Mordaigne, John Himes, Robert E. Thompson,
Bob Rabinowitz, Rob Washburn

proofreaders: John Himes, Michael Mules
printing: State Wide Printing - Albuquerque NM
printed mailings: Brian and Cory Snippen
digital edition emails: Frank Covey
subscriptions: Richard L. Beecher

President's Message

from the PNC³ president ...

At this time of writing in mid-February, I have not yet had a volunteer step forward to help with the club's Awards Committee. So, if anyone is interested, please let me know.

The World Stamp Show NY2016 will be held in New York from Saturday, May 28 through Saturday, June 4. I understand that they are expecting upwards of 250,000 people to go through the doors over the eight days. The United States hosts a World Stamp Show every ten years; the last U.S. show was held in 2006 in Washington D.C.

PNC³ will be represented at the New York, in booth 876. Check the program or visit the stamp show's web page at <http://www.ny2016.org/>. There you will find a lot of information about the show, including the schedule of events, as well as airline and hotel information.

PNC³ will have a club meeting on Sunday, May 29 in room 1E20 from 4:00 p.m. to 6:00 p.m. I hope that many of you will be able to make it to the show; and either stop by our booth or make it to the club meeting, or both. Some of the members will probably meet afterwards for dinner somewhere. So if you can, try to make it to the meeting.

Tom McFarland has volunteered to set up a schedule for those members who might be able to help staff our PNC³ booth during the show. If you might be able to help, you can contact Tom at philatomic@verizon.net.

I was able to attend the Sarasota National Stamp Exhibition in Sarasota, Florida last month. It seemed like a lot of people turned out for the show on Friday. While I was there, I was shown a mint strip of five of the 37¢ Snowy Egret with plate number V3211 (from Avery-Dennison, Scott 3829). It had the Valley/Peak die cut. The backing paper was cut inside the die-cut tips at both ends, but otherwise appeared to be sound.

Until now we had no reports of mint stamps or strips for either the Peak/Valley or Valley/Peak die cuts. (In "Reporting the Rarities" in the January issue, 53 used V/Ps and only 11 P/Vs were counted.) The strip was found in a collection that had been sold to a dealer. I hope to have a scan of the mint strip in April's *Coil Line*. – Robert E. Thompson



Welcome!



If you are a new reader to *Coil Line*, PNC³ is in our 29th year. We are a community of stamp collectors specializing in plate numbered coil issues of the USA. The first PNCs were issued in 1981 and, in February 1988, a network of PNC specialists founded our club. *Coil Line* was launched in May, 1988 and serves (along with other club literature) to inform collectors on the many aspects of PNCs. Studies include scarce numbers, varieties, printing methods, market values, PNCs on mail, and more. Thank you for visiting, and we hope you'll join us!

PNC³ Regional Meetings

Garfield-Perry March Party Regional Meeting – March 12

A PNC³ Regional Meeting is scheduled for 1 p.m. Saturday, March 12, 2016 during the Garfield-Perry March Party, March 10 – 12, 2016. Ohio's largest stamp show will be held at La Villa Conference & Banquet Center, 11500 Brookpark Road, Cleveland OH. (The location is near routes I-480 and West 130th.)

PNC³ will meet in the show's only meeting room, across from the registration table. The meeting agenda includes discussion of more recent PNCs, die cutting varieties and marginal markings. Door prizes will be given and time set aside for trading and conversation. Non-members are welcome to attend.

The Garfield-Perry show hours are Thursday 11 a.m. to 6 p.m., Friday 10 a.m. to 5:30 p.m., and Saturday 10 a.m. to 4 p.m. The show's website is www.garfieldperry.org. For further details on the PNC³ meeting or the stamp show, contact Ray Beer at rbeerdds@roadrunner.com or by phone, 440-227-1333.

Want to Sponsor a Regional Meeting?

Contact Tony Bruno for suggestions. He can put you in contact with others who have taken on the task. Several members have made it a regular habit of promoting meetings in their area.

Regional Meeting Chairman

Tony Bruno, PO Box 624, East Lyme, CT 06333-0624; email, tbbee@aol.com
(PNC³ meeting notices in this column are free. Please submit details to the Editor 3 months before the meeting.)

New PNC Arrived



USPS media image

At deadline, the latest *Postal Bulletin* (Feb. 18, 2016) announced a new coil issue featuring a new design in the “Fruits” series.

The nascent “Fruits” series is so-called by collectors, since the U.S. Postal Service has not given any name. A 5¢ Grapes self-adhesive in rolls of 10,000 was issued on February 19th, supplied by Ashton-Potter. This is the first time this format is used for an ordinary 5¢ stamp. They are set slightly apart from each other on liner paper for use in affixing equipment, typically found in lettershops that mechanically prepare large mailings.

The 5¢ Grapes join the first design in the series, the 10¢ Pears issued in January. (See Catalog Corner on page 30 for more details on the 10¢ coil.)

The USPS information indicates the 5¢ coils have a six-digit plate number prefixed “P” on every 27th stamp. Peter Tukker of the PNC³ Catalog Committee reports that the USA Philatelic sales item number for a part-roll coiled strip of 500 is 781915.

The strips of 500 incurred some grumbling recently in the online Delphi Forums’ “Stamps” forum. A poster asked, “It is irritating to me, and I am sure to many others who prepare covers, that we can no longer purchase smaller quantities of the definitives like the Pears and now the Grapes. It seems to me that we could buy strips of 25 or something in the past. Does anyone know why this

has changed?”

Our club secretary Richard L. Beecher replied in part, “There are probably a few reasons, but it largely boils down to cost and inventory management. Order processing at SFS in Kansas City is highly automated. The cost to break rolls of any size, plus to manage and dispose of the scrap, apparently isn’t worth the expected return. If you look at any USPS quarterly philatelic catalog, you will see that coils are placed in the back of the catalog.”

Another posted a reason from USPS spokesman Mark Saunders: “The Stamp Services management team is undergoing on-hand inventory evaluation. They are looking at past sales coupled with different forecasting methodologies to determine proper quantities of not only stamps but also stamp products to be manufactured.”

PNC³ Catalog Offerings Updated for 2016

On the wrapper for this issue you will find an order form for the latest offerings by the Catalog Committee. The lead item on the form is the section containing “**New Offerings**,” followed by “**Re-Offered Publications**” and then “**Prior Publications**” available in limited quantities.

New publications include the annual update of PNCs issued in 2015, as well as the updated indices of all PNCs since 1981. Re-Offered Publications include a chapter of the permanent catalog added last year, titled “First Forever Flags 2010 – 2013,” covering the 44¢, 45¢, and 46¢ values with a flag theme. Also offered again is a chapter on the die varieties of contract printer CCL Label created in 2014. This is similar to the chapter “Avery Die Cut Varieties,” which is still available in limited quantities.

The order form is quite descriptive, and orders placed on this form can be expected to ship within 60 days. The reason for the long shipping time is that the new publications are not printed until the approximate demand is known (to minimize leftover inventory). Orders can trickle in for nearly a month before the print quantity is determined. Printing, collating and packaging can take another couple of weeks, and then time in the mailstream is needed.

If you need any of the Re-Offered or Prior Publications, please order early, as it will be “first come, first served” until the supply runs out.

Readers' Forum



Some errant bluish ink. I am attaching an image of a 23¢ USA Presorted First-Class PNC (Scott 2607) I have on cover that shows an interesting blue line across the lower part of the face. I checked that the paper is not scratched, the color appears to be the same as the blue in the printing, and the coloration does not extend to the piece it is affixed to. I bet that the line was a result from a printing issue. Have any similar examples of these been reported previously? – *Steven Chapp #2082*

[*Past President Gene Trinks replies: "Thanks for reporting this printing anomaly. It appears to be a wiper blade incident (in removing excess ink from the printing base) and is similar to others I've seen in the past." Doug Iams notes: "While it looks like a doctor blade flaw at a glance, I believe it is a scratch or scuff after printing (which I've seen on lots of BEP coils from the 1990s)."*]

Reply to "A bit off-kilter." (Last month's forum showed the coil at right with these questions: *Would you know the value of this stamp? Has anyone made a value list yet on these rare stamps?*)

Most collectors consider split plate numbers inferior, although split-# collecting used to have a following. I know one person who is still interested in them today. – (name withheld by request.)

Supply specific plate numbers? Discussing in last month's *Coil Line* his experiences with obtaining coil rolls from post offices, Bob Rabinowitz noted, "I had a good contact within the Kansas City philatelic offices. I received no special service but realized that they would supply rolls of designated plate numbers from items they had in stock. ... I had... the knowledge that the manager would look for and find these numbers."

I don't know how it was in the early 80s as I was not buying from them that early. But later that certainly would have been a special service. For as long as I can remember, they have had the following in their philatelic catalog's terms and conditions: "For booklets and coils: We cannot guarantee specific plate number, slogans or electric eye markings." – *Doug Iams #625*

2016 coils block tagged? It appears that *Linn's Stamp News* has received and printed a piece of incorrect information about the new Ashton Potter Flag & Clouds coil. The February 22nd edition's article about this coil states it is block tagged.

My strip from the bottom row of the web shows all stamps completely covered with taggant and there is a tag break between stamps at 1L and 2L. Block tagged stamps don't have tag breaks and block tagging usually does not cover the entire stamp surface.

This one is overall tagged. – *Alan Thomson #180L*

[*Technical details in the Linn's story closely follow those from the USPS in the Postal Bulletin (January 21, 2016), with slight editing to better express in hobby terms. (please see page 38)*]



"A *Bicycle* 5.9¢ stamp photograph, number 3 on bottom, and top. The tail end of the 3 is on top, although it was almost a miss. It isn't tagged, since it's a precancel."

Catalog Corner

Frank Covey



10¢ Red Pears (s/a)
Plate **S111111**
PNC ID **2016-1**

The **10¢ Red Pears** stamp was issued January 17, 2016 in 10K rolls from Kansas City, MO. This is the first issue of a new low-denomination “Fruits” series destined to replace the “American Design” stamps now in use. Speculation at this time has the new series planned exclusively as self-adhesives. It also remains to be seen if coils and panes, or only coils, will be issued.

(American Design stamps were issued only in self-adhesive panes of 20 and water-activated gummed rolls. Also, a 1¢ Bobcat coil is available with either adhesive, the only such low-denomination stamp to date.)

This printing is the first issue after CCL Label purchased in 2015 Sennett Security Products and its subsidiary American Bank Note Corporation. While the “S” prefix is used for this plate number, the new arrangement might result in a different letter in the future.

The **S111111** plate number repeats **every 27th** stamp.

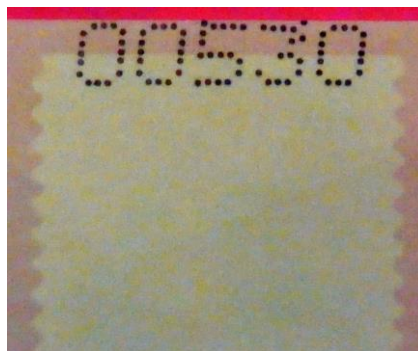
Stamps are phosphor-tagged and placed slightly apart on a liner that is higher than the stamp itself (for use in affixing equipment). “USPS” is microprinted near the stem of the left red pear. A tagging stripe appears on the right edge of the stamp “two to the left” (2L) of the plate-numbered stamp.

Five-digit back numbers occur every 10 stamps on the back of the liner with the highest back numbers on the outside of the roll. Both top and bottom back numbers exist. Top back number 00530 is shown below.

From Stamp Fulfillment Services in KC, one can order an “unfolded strip of 500” from the 10K Red Pears coil by using item number 799315.



A



B



C

From left to right: (A) an open box containing an “unfolded strip of 500” from a 10K roll, (B) top backnumber example 00530, (C) “USPS” microprinting close-up.

Terms & Codes Used

1. Numbers in () indicate **total** number of items in lot; [] = number of items within a *subset* of the lot.
2. All lots are listed with a minimum starting bid and bids must conform!
3. For precancel strips: If has gap, it's listed; no listing=NO GAP!
4. In case of a tie bid, the **earliest** postmark or email date wins.
5. All winning bids will be at one bidding increment over the second high bidder.
6. I will not accept phone bids; bids must be only via mail and email! **(Please find Bid Sheet on wrapper for mail use.)**
7. R = right, L = left, HVY = heavy, Lt = light, BMC = black machine cancel, PMC = purple machine cancel, FDC = first day cover or cancel, S# = plain strip, RHC = red hand cancel, BHC = black hand cancel, @ = at, btm = bottom, **sh.=shoulder**, cvr=cover, [cvr]=with window, rtn=return, Rec'd = Received, SCV = Scott Catalog Value, VAL = PNC³ Values List.
8. ALL Bids must be in the auction director's hands by the closing date **Thursday, March 31, 2016** and not just postmarked by then!
9. Bids not conforming to the bidding increments will be lowered according to the proper increment.
10. "Buy Bids" will be accepted, but realize that only one Buy Bid can be honored and that is the *first* one, and at only one advance over second high bidder.
11. IF you add a "+" (plus sign) to your Bid, I will use it to break a tie only if needed.
12. Please, when placing a bid over the Internet, DO NOT use a spreadsheet or other such program as I have problems opening them. Just place it in standard email form. Once placed, please do not mail a confirming copy. The email address to send your bids to is PNC3auctions@aol.com. No phone bids, please!
13. If you need to call me with questions on a lot but NOT to place a bid, please call after 9 a.m. Chicago time. (773) 622-0663.

BIDDING INCREMENTS

\$1.00 TO \$4.75 = .25
\$5.00 TO \$9.50 = .50
\$10.00 TO \$49.00 = 1.00
\$50.00 TO \$97.50 = 2.50
\$100.00 TO \$495.00 = 5.00
\$500.00 AND OVER = \$10.00

"I would like to thank all the members that have donated lots for this auction and future ones, since I always seem to have a backlog of them from auction to auction. Please bid on these as they help keep your dues as low as they are. Good luck in this auction to both sellers and bidders."

--Joe Sedivy,
 Auction Director

Email: PNC3auctions@aol.com

*** Bid Sheet is on inside of cover wrapper.***

Lot #	Item	Description	Min. Bid	Lot #	Item	Description	Min. Bid
A. == MINT PLATE# SINGLES, PAIRS ==				18	#14, XF/S		22.00
1	1904a	10.9¢ Hansom Cab P/C, PS-2, #3, VF/XF, line VF, line gap	\$15.00	19	1898Ab	4¢ Stage P/C, #3, VF/XF, line XF, gap 2L	3.25
B. === MINT PLATE STRIPS OF 3 ===				20	#5, VF, line VF, gap 1L		3.50
2	1891	18¢ Flag, #1, F/VF bit low, red ink transfer on gum	9.00	21	#6, VF/XF, line VF/XF, line gap		4.00
3	1895b	18¢ Flag P/C, #14, F/VF	4.00	22	#6, VF, line VF, line gap		3.00
4	1900	5.2¢ Sleigh #3, F/VF close @L, line VF/XF	20.00	23	(4), #3&4, gap 2L, #5&6, line gap, all VF/XF, lines VF/XF		6.00
5	1903	9.3¢ Mail W. #5, F/VF, line VF, red ink transfer on gum	10.00	24	1900	5.2¢ Sleigh, (2), #1&2, F/VF, lines VF	2.00
6	1907	18¢ Surrey, #1, VF, line XF/S	2.50	25	#5, F/VF high & left, line F/VF		130.00
7	1908	20¢ Pumper, #1, XF, line F/VF	2.50	26	1900a	5.2¢ Sleigh P/C, #2, VF, line VF/XF	2.25
8	2005	20¢ Consumer, #1, VF/XF, line VF/XF	1.25	27	#4, VF, line VF		5.00
9	2132a	12¢ Stanley P/C, #2, VF, line S	1.00	28	#6, XF, line XF		7.50
10	3265	[33¢] H Hat, #2222, XF	3.25	29	#6, VF, line VF, gap 2L, VAL \$14		8.00
C. === MINT PLATE STRIPS OF 5 ===				30	1901a	5.9¢ Bicycle P/C, #3, XF, line XF/S, gap 1/4L plate# btm loop shorter than top loop by 20%, VAL \$500	300.00
11	1891	18¢ Flag, (2), #4&5, VF	4.50	31	#3, F/VF, line VF/XF		12.00
12		#5, F/VF perfs close @R	2.00	32	1903	#5 VF bit low, line VF, gap 1/8L VAL \$105	50.00
13	1895	20¢ Flag, #5, S	2.75	33	9.3¢ Mail W. (2), #1&2, F/VF, lines VF		3.75
14		#12, F/VF	1.00	34	1903a	9.3¢ Mail W. P/C, #3, F/VF bit high, line VF/XF, gap 1-3/4R	50.00
15		#13, VF	1.00	35	#4, F/VF, line XF, gap 2L		25.00
16	1895b	20¢ Flag P/C, #14, VF/XF	9.00	36	#4, XF, line VF, no gap (<i>pic, back page</i>)		60.00
17		#14, XF	20.00				

... PNC³ Spring Auction # 54 ...

Joe Sedivy, auctioneer

Lot #	Item	Description	Min. Bid	Lot #	Item	Description	Min. Bid
37	1903a	con't (2), #5&6, XF, lines VF/XF, no gaps	\$5.50	85	2281	25¢ Bee, #1, full serif, wide tag, XF/S	20.00
38	1904	10.9¢ Hansom, #2, VF/XF, line XF	5.00	86	(7)	5¢ Circus W., #2542, #1&2, #2452b, #A1&A2, #2452d, #S1-S3, all VF	4.75
39	1904a	10.9¢ Hansom P/C, #4, F/VF, line VF/XF, gap 1R, perfs folded @1L, still excellent appearance	25.00	87	2453	5¢ Canoe, (3), #1-3, VF	3.00
40	1906a	17¢ Auto P/C, #5A, XF, line XF, gap 1L	3.00	88	2454	5¢ Canoe, #S11, VF, low gloss gum	2.00
41		#5B, VF/XF, line XF, gap 1L	22.00	89	2463	20¢ Cog Railway, #1, XF/S	1.50
42		(2) #1C, 2C VF, lines VF/XF both line gaps	6.50	90	2464	23¢ Lunch W. (2), #2&3, VF/XF	5.00
43		(2), #3C & 4C, VF, lines F/VF, no gap	6.50	91	2464a	23¢ Lunch W. (2), #4&5, VF, shiny gum	9.50
44		(2), #5BA & 6BA, F/VF low but #s clear btm, lines XF, line gap	12.00	92	2466	32¢ Ferryboat, #3, XF, shiny gum	3.00
45	1907	18¢ Surrey, (2), #5&6, VF/XF, lines VF/XF	3.75	93		(2), #3&4, XF/S, shiny gum	6.50
46	1908	20¢ Pumper, #5, VF/XF, line VF	2.00	94		#4, VF, low gloss gum	5.00
47		#10, VF, line VF	2.00	95	2468b	\$1 Sea Plane, #3, S	6.50
48		(3), #5,12,14, VF, lines VF/XF	5.50	96	2495Ab	32¢ Peach & Pear, #V11111, XF/S	6.00
49	2115	22¢ Flag, #3, XF/S	21.00	97		SAME but only XF	6.00
50		(2), #6&7, F/VF	5.50	98	2523	29¢ Rushmore, #2, VF	1.00
51		#12, VF/XF	1.00	99		#3, VF/XF	2.50
52		#14, XF/S	19.00	100		#4, VF	1.00
53	2123a	3.4¢ Bus P/C, #2, XF, line XF, gap 1R	3.00	101		#6, VF/XF	1.00
54		(2), #1&2, XF/S, lines XF, both line gaps	50.00	102		#6, XF	2.50
55	2128a	8.3¢ Ambulance, (2), #1&2, F/VF, lines VF, both gap 1L	2.00	103		#7, VF	2.50
56		(2), #1&2, VF, lines VF, both gap 2-1/8L	2.25	104		#7, VF	1.00
57	2129a	8.5¢ Tow Truck P/C, (2), #1&2, XF	7.00	105		(3), #1,2,4, VF/XF	5.50
58	2130	10.1¢ Oil W. #1, XF	3.00	106	2525	29¢ Tulip rouletted (2), #S1111, S2222, XF	5.00
59	2130b	10.1¢ Oil W. Red P/C, #2, XF	1.00	107	2526	29¢ Tulip, Perforated, #S2222, XF	3.00
60	(3)	#2130, #1 & 2130b, #2&3, XF	4.00	108	2529	19¢ Fishing Boat, (3), #A1112, A1212, A2424, XF/S	6.40
61	2131	11¢ Stutz, (4), #1-4, VF/XF	4.00	109	2529a	19¢ Fishing Boat (2) #A7679, A7779, XF/S	5.00
62	2132b	12¢ Stanley P/C B press, #1, XF	6.00	110	(2)	#2529a, #A7667 & #2529C, #S111, both XF	5.00
63	2134b	14¢ Iceboat, B Press, #2, F/VF bit low	1.00	111	2529C	19¢ Fishing Boat, #S111, XF	2.50
64	2149a	18¢ Washington P/C, (2), #11121, VF & 33333, XF	6.00	112	(4)	#2602, [10¢] E&S, #A11111 & A11112, #2604, #S11111 & S22222, VF	4.75
65	2150a	21.1¢ Letters P/C, #111111, XF	2.50	113	2602	[10¢] E&S, (4), #A21112, A21113, A22112, A22113, XF	4.75
66	(2)	#2228, 4¢ Stage, #1, block tagged #2228a, 4¢ Stage, #1 Overall tagged, XF	5.00	114		(4), #A33333, A33335, A34424, A34426, VF/XF	4.50
67	(5)	#2252, #1, & 2252a, #2&3 dull gum #5&6, shiny gum, F/XF	5.00	115		(4) #A43324, A43326, A43335, A43426, VF	4.75
68	2255	7.6¢ Carreta, (3), #1-3, VF/S	3.00	116		(4), #A53335, A54444, A54445, A89999, VF/XF	4.75
69	2256	8.4¢ Wheel Chair, (3), #1-3, XF	8.00	117		(4), #A99999, A1010101010, A1011101011, A1011101012, VF/XF	4.75
70	2257a	10¢ Canal Boat #1 VF overall tag, dull gum	4.50	118	2605	23¢ Presort Flag, #A111, VF/XF	1.00
71	2260	15¢ Tug, (2), #1&2, VF	2.25	119	2607	23¢ Presorted Flag, #1111, VF	1.00
72	2261	16.7¢ Popcorn W., (2), #1&2, F/VF	2.00	120	2609	29¢ White House, #1, VF/XF	1.00
73	2262	17.5¢ Race Car, #1, XF/S, tagging shift 8mm L, 3-1/2mm down	2.50	121		#2, VF	1.00
74		#1, XF	2.25	122		#5, F/VF bit high	1.00
75	2262a	17.5¢ Race Car P/C, #1, XF	2.25	123		#11, VF	1.00
76	(2)	#2262 & 2262a, both #1, XF	4.75	124		(2), #15, VF, #16, XF	5.00
77	2263b	20¢ Cable Car, #2, F/VF	3.75	125	2886b	[32¢] Black G Flag w/spaces #V11111 XF/S	4.00
78	2265	21¢ Railroad Mail Car, (2), #1&2, VF/XF	4.50	126		SAME	7.50
79	2279	[25¢] E Earth, (2), #1111 & 1222, XF	3.00	127	2888	[25¢] Blue Background G, #S11111, XF/S	1.75
80	2280	25¢ Yosemite, #1 block tagged, F/VF	1.00	128	(2)	#2888 #S11111 & #2893 #A11111 all XF/S	5.00
81		#4, F/VF bit low	1.00	129	2889	[32¢] Black G Flag, (2), #1111 & 2222, VF	10.00
82	2280a	#3, F/VF close @L, prephos.	1.00	130		(2), #1111 & 2222, S	8.00
83		#8, F/VF	1.00	131	2890	[32¢] Blue G Flag (2) #A1111, A5417, XF/S	5.50
84		#9, F/VF bit high	1.00	132		(2), #A1112 & A5437, XF/S	6.50
				133		(2), #A1112 & A5327, XF/S	5.50

... PNC³ Spring Auction # 54 ...

Joe Sedivy, auctioneer

Lot #	Item	Description	Min. Bid	Lot #	Item	Description	Min. Bid
134		(2), #A1211 & A1212, XF/S	\$6.50	184	3018	32¢ Midnight Angel, #B1111, XF	6.50
135		(2), #A1211 & A1314, XF	6.50	185	(6)	#3044, 1¢ Kestrel, #1111, BYCM, BCYM, YMCB, #3044a, #2222, 3333, #4444, all VF	4.75
136		(2), #A1313 & A1324, XF/S	5.50	186	(2)	#3053, 20¢ Blue Jay, #S1111, #3475, 21¢ Bison, #V2222, both XF	4.75
137		(7), #A1113-A1314, all diff. # s, XF/S	26.00	187	3054	32¢ Yellow Rose, (2) #1122 & 2222, F/VF	5.50
138		(7), #A1324-A2214, all diff # s, XF/S	27.00	188	(2), #2333 & 3444, VF/XF	5.50	
139		(10), #A3314-A4426, all diff # s, XF	38.00	189	(2), #5566 & 7777, F/VF	6.00	
140		(2), #A3324 & A4427, XF	6.50	190	3228a	[10¢] Bike S/A w/spaces, #333, XF round sh. (shoulder) diecut	30.00
141		(2), #A3426 & A3435, XF	6.50	191	(2)	#3263, 22¢ Uncle Sam S/A, #1111, #3353, 22¢ Uncle Sam WAG, #1111 both are VF	4.75
142		#A4435, XF	50.00	192	3264	[33¢] H Hat WAG, (2), #1111 & 3333, VF	6.50
143		#A5427, XF	3.00	193	(2), #3343 & 3444, XF	6.50	
144	2892	[32¢] Red G Flag, (2) #S1111, S2222, XF/S	5.50	194	3265	[33¢] H Hat S/A, (2), #1111 & 2222, VF	6.00
145		(2), SAME	6.00	195	3266	[33¢] H Hat S/a w/spaces, #1111, XF	5.50
146	2893	[5¢] Green Background G Flag, (2), #A11111, F/VF, A21111, XF	3.50	196		SAME	5.50
147	2905	[10¢] Auto, (3), #S111, S222, S333, XF/S	4.00	197	3270	[10¢] E&S WAG, (2), #11111 small date & 22222 large date, VF	4.75
148		(3), SAME but these have random back# s (2) black, (1) pink	3.00	198	3282	33¢ FOC S/A w/spaces, (2), #1111 square sh. (shoulder) diecut, #2222 round diecut, VF	7.00
149	2907	[10¢] E&S w/spaces, #S11111, XF	2.50	199	3305a	33¢ Berries S/A, (2), #B1111 & B1112, XF	7.00
150	2913	32¢ FOP, WAG, #11111, VF, shiny gum	1.00	200	(2), #B2211 & B2221, XF	7.50	
151		(2), #11111 & 22221, XF, shiny gum	7.50	201	(2)	#3305a, 33¢ Berries, #B2222, #3481a, 34¢ Lilies, #B2222, XF	7.00
152		#11111, F/VF bit high, dull gum	1.00	202	3465a	[34¢] Lilies, #B1111, XF	11.00
153		#22322, XF/S	4.25	203	(2)	#3475A 23¢ Washington, #B11 & #3617, 23¢ Wash. #V22 with knoll @top left, all XF	5.50
154		#22322, VF	3.50	204	3477	34¢ Liberty, #7777, F/VF	8.00
155		(2), #22221 & 99969, F/VF	5.50	205	3481a	34¢ Lilies, (2), #B1111 & B2111, VF	7.50
156		#33333, VF	1.00	206	(2), #B2122 & B2211, XF	8.00	
157		#44444, VF	1.00	207	3633A	37¢ Flag, #B1111, XF	3.00
158		#66646, VF	2.00	208	3641a	37¢ Steel Toys, #B11111, VF	7.00
159		(11) #11111-78767 all diff #s F/XF dull gum	49.00	209		#B12222, XF	5.50
160	2914	32¢ FOP, #S11111, VF	1.00	210	3683a	37¢ Snowmen, #G1111, VF	7.50
161	(2)	#2914, #S11111, #2915B, #S11111, XF	6.00	211		#G1112, XF	7.50
162	2915	32¢ FOP, S/A, w/spaces, #V11111, VF	4.00	212	3770	[10¢] Atlas, #V12111, VF/XF, Rare # (pic)	40.00
163	2915A	32¢ FOP, S/A, (2), #87898 & 89898, 10x10, pv/vp, F/VF	6.50	213	(2), #V21111 & V22222, XF/S	7.00	
164		#88888, VF/XF, 10x10, pv/vp	6.00	214	3970	[39¢] Lib & Flag S/A (2), #P1111,P2222, XF	8.50
165		#88898, 10x10, pv/vp, VF	25.00	215	4897a	[49¢] Flags, #C11, XF	4.50
166		#88898, 10x10, pv/vp, F/VF	45.00	216	(29)	diff. Strips (12) WAG & (17) S/A values 5c-25¢ Face \$18.60	10.00
167	(pic)	#88898 10x11 vv/pp VF RARE, VAL \$1375	350.00	217	CVP31a	19¢ Variable Rate Shield, #1, old font shiny gum, VF/XF	5.50
168		#97898, 11x10, pp/vv, F/VF	4.00	218	CVP31b	20¢ Variable Rate Shield, #1, new font dull gum, XF	25.00
169		(2), #89878 & 97898, 11x10, pp/vv, F/VF	6.50	219		#1, 29¢ Value, XF/S	20.00
170		#99999, 11x10, pp/vv, F/VF	2.00	220	CVP32	19¢ Variable Rate Shield, #A11, XF	15.00
171		(2) #13231A & 13311A, 10x10 pv/vp, F/VF	6.00	221		#A11, 29¢ Values, VF/XF	5.00
172		#55555A, 10x10, pv/vp, VF	1.00	222		#A11, Values on strip are L to R 19¢, 23¢, 29¢, 39¢ 52¢, XF/S	19.00
173		(2) #44444A & 66666A, 10x10 vp/pv, F/VF	6.00	223	CVP33	32¢ Variable Rate Shield, #11, XF	5.00
174		#78777A 10x10 pv/vp F/VF incision style D	3.00	224	TD136	For Test Purposes Only, NO plate# but has a white line on R side middle stamp, S	5.50
175		#78777A, 10x10, pv/vp, F/VF	6.00	225	TD137	For Test Purposes Only, #S1, XF/S	5.00
176	2915B	32¢ FOP S/A w/spaces, #S11111, XF	4.00			MINT PLATE STRIPS OF 5 continue →	
177	2915C	32¢ FOP S/A, #66666, 11x12, vv/pp, XF	7.50				
178		SAME but XF/S	15.00				
179		#55555, 12x12, vp/pv, F/VF, die-cutting just clear @R	1.00				
180		#55555, 12x12, vp/pv, VF, top perf @R just clipped by scissor cut	5.00				
181		#66666, 12x12, vp/pv, VF/XF	2.00				
182	2915D	32¢ FOP S/A w/spaces, #11111, 10x10, pv/vp, F/VF	6.00				
183	2599b	29¢ Liberty S/A w/spaces, #B1111, XF	5.50				

Lot #	Item	Description	Min. Bid	Lot #	Item	Description	Min. Bid
D. MINT PLATE# STRIPS OF 6 OR MORE							
226	1891	18¢ Flag, PS-7, #2, XF, perfs bent lightly at line position	\$16.00				
227	1900a	5.2¢ Sleigh P/C, (2), PS-10, #3, XF/S, line VF, #5, XF/S, line S, both gap 4R	200.00	260	2225b	1¢ Omnibus, PS-7, #3, VF, low gloss gum	1.00
228		PS-7, #4, XF, line XF, gap 2L, VAL \$21.50	12.00	261	2252a	3¢ Conestoga, PS-7, #5, XF, shiny gum	7.00
229		PS-9, #5, XF/S, line S, gap 3L, VAL \$30	20.00	262		PS-7, #5, XF, low gloss gum, small #5	7.00
230		PS11 #5 VF/XF, line XF gap 4R, VAL \$475	175.00	263	2257a	10¢ Canal Boat, PS-7, #1, XF, overall tagged dull gum	10.00
231		PS11 #5 XF/S, line VF/XF, gap 4R, VAL \$475	200.00	264	2452Bf	5¢ Circus W. PS-7, #A3, XF	1.75
232		PS-12, #5, XF/S, line XF/S, gap 6L, VAL \$150	60.00	265	2890	[32¢] Blue G Flag, PS-7, #A1313, XF/S	4.00
233		PS-12, #5, XF/S, line S, gap 6R, VAL \$150	55.00	266	(2)	PS-7, #2891, Red G Flag #S11111, #2892, Red G Flag, #S22222 both are XF	6.50
234		PS10 #6 VF, line XF/S gap 3-1/2L VAL \$22	8.00	267	3208	[25¢] Diner, PS-7, #S11111, S	4.00
235		PS-8 #6, VF, line VF, gap 4-1/8L, VAL \$300	100.00	268	3228	[10¢] Bike, (2), PS-7, #221, round sh. diecut, #333, square sh. (shoulder) diecut, XF/S	5.00
236	1901a	5.9¢ Bike P/C, PS-12, #3, VF/XF, line VF/XF, gap 5R VAL \$500	170.00	269	3465a	[34¢] Lilies, PS-9, #B1111, XF	25.00
237		PS-12, #3, VF/XF, line VF/XF, gap 6R, VAL \$40	22.00	270	3481a	34¢ Lilies, PS-9, #B2122, VF/XF	6.00
238		PS12 #4 XF/S line VF/XF gap 5R VAL \$500	170.00	271	3617	23¢ Washington S/A, (2), PS-7, #V45, (1) pv & (1) vp, both XF	5.00
239	1903a	9.3¢ Mail W.P/C, PS-11, (2), #3&4, XF/S, lines XF, gap 5L	190.00	272		(2), PS-7, #V46, (1) pv & (1) vp, both VF	5.00
240		PS-10, #5, VF/XF, line XF, gap 3-1/2L, VAL \$1000	500.00	273	3641a	37¢ Steel Toys, PS-9, #B12222, VF/XF	7.00
241	1904a	10.9¢ Hansom, PS-8, (2), #3&4, XF, line XF/S, gap 1-1/4R	375.00	274	3683a	37¢ Snowmen, PS-9, #G1111, XF	9.00
242	1906a	17¢ Auto P/C, #3C, VF/XF, line F/VF, VAL \$19.25	10.00	275		SAME but F/VF	10.00
243		PS-8, #3C, VF, line VF, line gap	7.00	276		PS-9, #G1112, XF	12.00
244		PS-8, #4C, XF/S, line XF/S, line gap	7.00	277	3853a	[25¢] American eagle, WAG, PS-11, #S111111, XF	6.50
245		PS-10, #5C & 7C, XF, lines XF, gaps 5L	175.00	278	4007a	39¢ American Crops, PS-10, #S1111, VF	5.00
246		PS-10, #6A-B, XF/S, line S, gap 4R	60.00	279		PS-11, #S1111, VF/XF	8.50
247		(2) PS10 #3B-A & #4B-A, F perfs just touch @R, lines F do not touch perfs, gap 4-1/4R, has CPV @1R a white dot in curve of D	50.00	280	4132	[41¢] N.D. Flag, PS-7, #P1111, XF	4.25
248		(2), PS-10, #3B-A & #4B-A, XF/S, lines XF, gaps 4R	50.00	281	4175a	41¢ Blooms, PS-11, #P1111, VF/XF	13.00
249		(2), PS-7, #5B-A & #6B-A, XF/S, lines XF/S, line gaps	25.00	282	4590a	[25¢] Spectrum Eagle, PS-11, #V11112, S, with black middle back# 05820 on position 4	6.50
250	1908	20¢ Pumper, PS-9, #11, F/VF, perfs just clear @R, line F does not touch perfs	20.00	E. === IMPERFS ===			
251	2123a	3.4¢ Bus P/C, PS-8, #2, F/VF, line VF, gap 2-1/16R, missing period @3R	5.00	283	1895d	20¢ Flag PS4 #8 block tag 19x22mm, VF/XF	50.00
252		(2) PS-9, #1&2, VF/XF, lines VF/XF, gap 2R	20.00	284		PS-6, #9, S, narrow block tagging	85.00
253	2124a	4.9¢ Buckboard P/C, PS-8, #6, XF, line F/VF, gap 1R, of web row 1	9.00	285	2136a	25¢ Bread W. PS-5, #2, VF/XF	80.00
254		PS9 #2 VF/XF line XF/S gap 2R, web row 2	6.00	286		PS-5, #2, VF vert, also this strip mis-cut 10% of words from top are at btm	65.00
255		PS8 #6, XF, line F/VF, gap 1R, of web row 3	9.00	287	2609a	29¢ White House, PS-6, #3, XF	350.00
256		PS8 #6, XF, line XF/S, gap 1R, of web row 4	9.00	288		PS-6, #4, XF (<i>pic, back page</i>)	350.00
257	2128a	8.3¢ Ambulance P/C, PS-6, #1, F/VF, line VF, this low entry type with #entered low and off center, missing period @2R	18.00	289		PS-6, #7, XF	350.00
258	2129a	8.5¢ Tow Truck red P/C, PS-10, #1, VF, gap (<i>pic</i>) @6L, you need to see Rich Nazar book to read about this type of gap, new one for me!	15.00	290	3054a	32¢ Yellow Rose, S-2, NO #, XF vert, also mis-cut 10% of btm of flower at top	15.00
259	2130b	10.1¢ Oil W. Red P/C PS-11 #2 VF, gap...	15.00	291	3281a	33¢ FOC, S6, NO#, VF bit low, light diag. crease in strip 2016 SCV \$90	14.00
				F. === MISPERFS ===			
				292	1908	20¢ Pumper, PS-5, #2, XF/S horiz., perfs 3mm to left thru "e" of "Pumper"	120.00
				293	2265	21¢ Rail Mail Car, PS-5, #1, VF horiz., perfs thru "r" of "Car"	3.00
				294	2458	10¢ Tractor Trailer, PS-6, #22, XF horiz., perfs 3mm left thru "e" of "Trailer"	5.50
				295	2529	19¢ Fishing Boat, PS-8, #A1111, XF horiz. 5mm right between 1, 9c	20.00
				296	2890	[32¢] Blue G Flag, PS-6, #A1112, XF horiz., perfs through "r" of address (<i>about halfway through... more lots</i>) →	20.00

Lot #	Item	Description	Min. Bid	Lot #	Item	Description	Min. Bid
G. === MISCUTS ===				327		PS-5, #S111, S, tagged error, has btm pink back# 01300 on position 5	8.00
297	1906	17¢ Auto, PS-7, #3, VF vert. line XF, # 100% at top	\$12.00	328	3632A	37¢ Flag, PS-5, #S4444, XF/S, smooth tagging variety	50.00
298		PS-7, #4, VF vert. line XF, # 100% at top	12.00	J. === # ON # MINT STRIPS ===			
299		PS-5, #5, F/VF vert., line F/VF, # 95% at top no trace at btm	3.25	329	2604	[10¢] E&S, PS-5, #S22222, XF, btm purple back# 06490	3.00
300	1906a	17¢ Auto P/C, PS-11, #3A-B, XF vert., line F/VF, gap 5R, # 100% top	100.00	330	2891	[32¢] red G Flag, PS-5, #S1111, VF, btm black back# 2490	8.00
301		PS-11, #5B-A, XF vert., line S, gap 5R, # 100% top	30.00	331		PS-5, #S1111, VF/XF, top black back# 1730	7.00
302	2005	20¢ Consumer, PS-5, #2, VF vert., line XF, foot of 2 missing, no trace @ top from first row of web top 5mm of strip untagged	5.00	332	2914	32¢ FOP WAG, PS-5, #S11111, XF, btm purple back# 01050	3.00
303	2115b	22¢ Flag, PS-5, #8, VF/XF vert., of "D" press tag block 19x22-1/2, 50% of # at btm no trace at top of web row 1 of web	50.00	333		PS-5, #S11111, VF/XF, btm purple back# 08620	4.00
304	2125	5.5¢ Star Truck, PS-5, #1, VF vert., # split 50/50	2.00	334	3228	[10¢] Bike S/A w/spaces, PS-5, #222, XF, round sh. diecut, btm Aqua back# 7380	5.00
305		PS-5, #1, VF vert., #100% at top	12.00	335	3271	[10¢] E&S S/A w/spaces, PS-5, #11111, VF, top Aqua back# 4840	6.00
306	2128a	8.3¢ Ambulance P/C PS6 #1 VF/XF vert, line VF/XF, from low entry error, no trace of # @top or btm, Rare-missing period @# stamp	20.00	336	3282	33¢ FOC S/A w/spaces, PS-5, #2222, VF, top Aqua back# 6140	10.00
H. = CONSTANT PLATE, MAT VARIETIES=				337	3801b	[25¢] American eagle, PS-11, #S1111111, XF/S, top pink back# 04820	6.50
307	1906	17¢ Auto, PS-7, #7, VF bit low, line XF, oil leak on 1R	45.00	338		PS11 #S2222222 XF/S btm pink back#07380	6.50
308	2123a	3.4¢ Bus, (2), #1&2, VF/XF, lines XF/S, missing period after ORG @2R	5.50	339		PS11 #S3333333 XF/S top pink back# 01620	6.50
309	2131	11¢ Stutz, PS-5, #3, VF, line VF, broken back fender	6.00	340	3967	[39¢] Liberty WAG, PS-5, #S1111, VF/XF, btm pink back# 0620	4.75
310		PS-5 #3 XF, line XF, dropped transfer @2L	15.00	341	4131	[41¢] Flag PS5 #S1111, VF, btm pink back# 1150	6.00
311	2260	15¢ Tug, PS-5, #1, S, broken #1 @1R	18.00	342	4495	[5¢] Art Deco Bird, PS-5, #P1111, XF, btm black back# 190	7.50
312		PS-7, #1, S, broken #1 @1R	20.00	343		PS-5, #P2222, XF, top pink back# 1740	6.00
313	2458	10¢ Tractor Trailer, PS-5, #22, XF, has period after 22	50.00	344	4672	1¢ Bobcat, PS-5, #P2222, VF/XF, top black back# 130	4.50
314	2463	20¢ Cog R/R, PS-7, #2, XF, dot above 1870s on center stamp	10.00	345	4749	46¢ Star PS5 #S11 XF btm black back#06400	7.50
315	2609	29¢ Whitehouse, #18, VF/XF, red eagle on flag pole	9.00	346	5018a	[25¢] Spectrum Eagle, PS-7, #P1111, XF, btm black back# 1340	12.00
316	2915A	32¢ FOP S/A, PS-5, #89878, 11x10, pp/vv, VF/XF, brown dot under date @1L	12.00	K. === OTHER VARIETIES ===			
I. === TAGGING VARIETIES ===				347	1897A	2¢ Locomotive, PS-7, #8, VF/XF, line XF, missing perf hole on line 7th down from top	1.00
317	1898A	4¢ Stage, (2), PS-7, #3&4, VF, lines XF, Prairie Fire Tagging	26.00	348	1898A	4¢ Stage P/C, PS-5, #6, XF, line XF, gap 1L, b missing period after ORG on 2L	5.00
318	2225a	1¢ Omnibus, PS-7, #3, XF, shiny gum, light tagged error	30.00	349	1908	20¢ Pumper, PS-5, #5, F/VF low but # clears, line F/VF perf faults @R, shows Chiller Roller doubling on 2&3L	7.50
319	2257b	10¢ Canal Boat, PS-5, #4, looks untagged but there are a few tagging flecks	10.00	350	2123a	3.4¢ Bus P/C, PS-8, #2, XF, line XF/S, gap 1R, missing period @2R, damaged period @3R, gap in btm line only, no listing found!	20.00
320		PS-7, #4, XF, shiny gum, untagged error	100.00	351		SAME	20.00
321	2260a	15¢ Tug, PS-5, #2, overall tagging with tagging gap @1-1/8R	1.00	352		PS-9, #2, XF/S, line S, gap 3R in btm line only, damage to almost periods at 4&5R "THIS & ABOVE TWO LOTS MIGHT BE NEW FINDS"	20.00
322	2529b	19¢ Fishing boat, PS-5, #A5555, untagged	4.00	353		PS-8, #2, F/VF bit low, line S, gap 2R, missing period @3R and damaged almost missing period @4R (<i>more lots →→→</i>)	15.00
323	2603b	[10¢] E&S, PS-7, #22222, S, tagged error, VAL \$437.50	150.00				
324	2903a	[5¢] Moutains PS5 #11111, XF, tagged error	18.00				
325		SAME	18.00				
326	3615a	3¢ Star, PS-5, #S111, S, tagged error	5.00				

Lot #	Item	Description	Min. Bid	Lot #	Item	Description	Min. Bid
K. (con't) === OTHER VARIETIES ===							
354	2128	8.3¢ Ambulance, PS-5, #1, XF, line XF/S, low entry try where plate# entered low and off center on die, #full just clears btm	\$15.00	381		F/VF, rough opening @top #14 PS-3, tied to white #10 cvr by 2/17/?? BMC, XF, of S.W. Inc.	15.00
355	2281	25¢ Bee PS5 #2 VF/XF, black seam line@1L	6.00	382	2115	22¢ Flag, PS-1, #6, tied to #10 white cvr by 12/22/87 BMC of Weitinger & Tucker Lawyers, F/VF	15.00
356	2466b	32¢ Ferry, PS-5, #5, XF/S, Bronx Blue color error	50.00	383	2115b	22¢ Flag, PS-1, #20, of "D" press, tied to #10 white YMCA cvr by 8/21/87 BMC, tag block19x23, perfs cut both sides to some degree, F/VF	10.00
357	2523c	29¢ Rushmore, PS-5, #7, XF/S, Toledo Brown color error	57.50	384	2150a	21.1¢ Letter PS1, #111121 on #9 white [cvr] of First Deposit Nat'l Bank with red auxiliary pointing hand, stamp has S/E @R, cvr F/VF	125.00
358		PS-7, #7, XF/S, Toledo Brown color error	50.00	385	2262a	17.5¢ Race Car, PS-1, #1, on #9, white [cvr] of First Deposit Nat'l Bank with red auxiliary pointing hand, F/VF, short perfs @L	18.00
359		PS-7, #7, VF, Toledo Brown color error	55.00	386	2266	24.1¢ Tandem Bike, PS-1, #1, on #8 white [cvr] of Visa Gold with red auxiliary marks both front & back, XF, full perfs	20.00
360	2602	[10¢] E&S, (7), all strips with broken yellow l variety	60.00	387	2523d	29¢ Rushmore PS-1, #2, Lenz Tagging, tied to #9 [cvr] by 10/19/91 BMC, VF, SCV for off-cover used single \$250	75.00
361	2890	[32¢] Blue G Flag, PS-5, #A4427, XF/S, color shift where gray 2 is 1/2mm higher than other #s so flag does not touch pole.	4.00	388	2602	[10¢] E&S, PS-1, #A21112 on #10 white cvr of Auto Services in MD, VF	2.00
362	2915A	32¢ FOP, PS-5, #89878, F/VF, brown dot under date on # stamp	25.00	389	2606	23¢ USA, PS-1, #A2232, on white [cvr] 9x4-11/16 of MasterCard, S overall	15.00
363	3769	[10¢] Lion, PS-5, #S11111, VF, has super perf hole @1R sixth from btm	5.00	390		SAME but with #A2233	15.00
364		SAME but F/VF centered	15.00	391		PS-1, #A4364 on #10 white cvr of Capital Cash, red auxiliary pointing hand, overall XF	20.00
365	3829	37¢ Egret (2), PS5 #V1111 & V3212 all XF vp/pv, black 2 printed on top of dark blue 1 PS-5, #V3222, VF, bell @ top left	6.00	392		PS-1, #A4443 on #10 white cvr of Capital Cash, red auxiliary pointing hand, overall XF	25.00
366		PS-5, #V3222, VF, bell @ top left	9.00	393		PS-1, #A4444, SAME	15.00
367		PS-5, #V3222, VF/XF, knoll @ top left	9.00	394	2888	[25¢] Blue background G Flag, on unopened #10 white [cvr] of Bank of America Master Card, F/VF, stamp has S?E @L	2.00
368	3983	39¢ Liberty & Flag, PS-7, #V1111, VF, P/V short bell best seen on # stamp	3.50	395	2904B	[5¢] Mountains, PS-1, #1111, on #10 white cvr of New York Blood Center, overall VF	2.50
369		SAME	3.50	396	2912A	[25¢] Juke Box PS1, #S22222, white 7-1/4 x 5-1/4 cvr of Charles Schwab&Co overall VF	4.00
370	4002	24¢ Buckeye PS5 #V1111 VF, Bell right side	15.00	397	2913	32¢ FOP, PS-1, #34333 tied to white #9 Credit Union reply cvr by 9/2/97 BMC, stamp has perf faults @L, overall F/VF	2.50
371	4132	[41¢] Flag, PS-20 folded in half, #P1111, VF/XF, with white line @14R and brown ghost at P1 over P1	15.00	398	3208A	[25¢] Diner PS1 #55555 square sh. diecuts, 7¼x5¼ white cvr Charles Schwab overall VF	4.00
372	4134	[41¢] Flag, (3), PS-1, #V1111, VF/XF, (1) normal, (1) bell top, (1) knoll top	3.00	399		PS-1, #22211, #9 white [cvr] of Charles Schwab, only 9 cvrs reported for this #, overall VF/XF	10.00
373	4868	Forever Star Spangled Banner strip of 3 vertical imperf between rows 1&2 & 2&3, NO plate#, item XF/S	40.00	400	3228	[10¢] Bike, PS-1, #444 w/ rare square sh. die cut on #10 white [cvr] of Mealey's Furniture, tear in cvr at top left away from stamp, VF	35.00
L. === FIRST DAY COVERS ===							
374	1903	9.3¢ Mail W. PS-3, #1, tied to Artcraft FDC, VF, # on left stamp	0.25	401	3447	[10¢] Lion, PS-1, #S44444, on #10 white [cvr] of A.M.M. in FL	3.50
375	1908	20¢ Pumper, PS-1, #6, tied to Artcraft FDC, VF, # covered by BMC	0.25	402		PS-1, #S77777, on white #10 [cvr] of Irvine, CA, XF	10.00
M. === OTHER COVERS ===							
376	(10)	6-3/4 utility reply cvrs with all diff used PNCs including #1891 #1, also #1907 #1, 1908 #9 & 2005 #4 to list a few, VF clean lot	5.00	403	3682	37¢ Snowman PS1 #G1112 tied-7x5Christmas card cvr by 12/20/04 BMC, overall VF	4.00
377	1906	17¢ Auto, #2, tied to #6 cvr with single #1899 no # by 1/23/86 BMC, a philatelic use mailed to Ken Lawrence, XF overall	10.00				
378	1907	18¢ Surrey, #15 plus 2¢ single tied to a #7 bank reply cvr by 12/3/81 BMC	10.00				
379		#3, tied to 6-3/4 white sweeps cvr by 6/24/81 PMC VF, stamp has 2-3 short perfs @L	35.00				
380	1908	20¢ Pumper, PS-5, #12, plus single Bread W. NO# tied to #10 white cvr by 8/23/88/ BHC of Skowhegan Savings Bank,	20.00				

Lot #	Item	Description	Min. Bid	Lot #	Item	Description	Min. Bid
404	3770	[10¢] Atlas, PS-1, #V22222, on #9 white [cvr] of American Express, overall VF/XF	\$5.00	...	10x10, pv/vp(2), 11x10, pp/vv F/VF		
405	3874a	[5¢] Sea Coast, PS-1 #P3333 with .75 mm deep valleys on white [cvr], reduced by opening @L of Richard Roberts, VF	4.50	439	(7) diff PNCs with incision style D, all 10x10, (3) pv/vp, (4) vp/pv, F/VF		7.00
406	3980	39¢ Liberty & Flag, PS-1, #V1111 on #10 white cvr of UPSS Publications	5.00	440	2915C 32¢ FOP, (2), #55555, 12x12, vp/pv, #66666, 11x12, vv/pp, both incision style A, (1) VF, (1) XF		3.00
407	4495	[5¢] ArtDeco Bird PS1 #P3333 on #10 white [cvr] of Nat'l Trust, with content, overall VF	3.00	441	#66666, 12x12, vp/pv, on paper, VF/XF		1.50
408	1897	1¢ Omnibus single NO# plus Walmart FOP dummy stamp from stamp dispenser sold in stores tied-#6 white cvr by 5/16/2000 BMC, Illegal use, dummy stamp has perf faults which are normal, overall VF	10.00	2915D	32¢ FOP, #11111, 10x10, pv/vp, incision style C, VF		3.00
N. === USED SINGLES ===				442			
409	1895b	20¢ P/C, #14, XF	20.00	443	3208A [25¢] Diner #22211 round sh. diecut, XF/S		22.00
410	1900	5.2¢ Sleigh, #3, XF (<i>pic, front page</i>)	70.00	444	(2) #22211 VF/XF, 1 square sh., 1 round sh.		10.00
411		#5, XF	65.00	445	3228* [10¢] Bike #444 square shoulder die, XF/S		75.00
412	1901a	5.9¢ Bike, #3, F/VF bit low, line gap	5.00	446	3770 [10¢] Atlas, #V13222, XF/S		85.00
413		#5, XF, line gap, jumbo perfs both sides	50.00	447	*(<i>pic</i>) #V13222, S *(<i>pic, front page, w/lot 445</i>)		165.00
414		#5, F/VF, line gap, SE @L, 90% of # at btm no trace at top	3.00	448	3785b [5¢] Seacoast, #P2222, XF, Tagged Error		15.00
415		#6, VF, line gap, almost SE @R	3.00	449	3829 37¢ Egret, #V3211, F/VF, pv/vp on paper, top left serrations were scissor-cut starting at 5th from btm, Rare: only 9 used reported		50.00
416	1903	9.3¢ Mail W. #1, VF bit low	3.00	450	#V3221, F/VF, bell top left on paper		30.00
417	1904a	10.9¢ Hansom, #3, VF	16.00	451	#V3211, XF, vp/pv (<i>pic, front page</i>)		250.00
418	2115	22¢ Flag, #14, XF	12.00	452	3968 [39¢] Lib/Flag #V1111 VF/XF Bell @UL		1.00
419	2115b	22¢ Flag, "D" press, #8, F/VF close @R, tagging box 19x23mm	10.00	453	4188 41¢ Flag #V1111, F/VF, bell @ upper right		1.00
420		#20, VF/XF, tagging box 19x23	18.00	454	(73) Varieties of PNCs with SCV from 50c-\$6, F/VF, est. SCV \$70		10.00
421	2255	7.6¢ Carreta, #2, VF, perfs short but there @L, white wheel variety	3.25	455	(41) all diff used PNC singles all Transportation, no flags, F/XF, several have perf faults		4.00
422	2457	10¢ Tractor Trailer, (5), NO#s, all have different mailer applied indicia, VF	3.50	456	(104) diff. used PNC singles, F/S		14.00
423	2523c	29¢ Rushmore#7 Toledo Brown error VF/XF	50.00	457	(107) SAME		14.00
424	2890	[32¢] Blue G Flag, #A4435, XF	125.00	458	(106) SAME		14.00
425	2913	32¢ FOP (3) on paper #22221 & 22222 both: thin #s, #22222, plus thick # to compare, #22222 has short perfs @L, F/VF	10.00	459	(155) diff used PNC singles mostly all flags, F/XF		15.00
426	2915A	32¢ FOP S/A, #88898 incision style C, F/VF with some paper on back the 1st 8 partially covered by cancel, 10x10, pv/vp	100.00	460	(21) diff 1915A & 2915C, 32¢ FOP used single overall VF, VAL \$45.60		20.00
427		#89899, 10x10, pv/vp, F/VF	100.00	461	(101) diff used PNC singles on paper, estimated SCV \$200, overall VF/XF		10.00
428		#13231A, 10x10, vp/pv, F/VF, rare diecut	225.00	O. === USED PAIRS ===			
429		#77777A 10x10 vp/pv on paper VF, VAL \$35	12.00	462	1891 18¢ Flag, #6, F/VF, # on Right stamp		325.00
430		#77777A, 10x10, vp/pv, XF	12.00	463	1906 17¢ Auto, #2, # 100% on top, F perfs just clear @L, line F/VF		7.00
431		#78777A, 10x10, pv/vp, F/VF	3.00	P. === USED PLATE STRIPS OF 5 ===			
432		#89898, 11x10, pp/vv, F/VF, on paper	2.00	464	2260b 15¢ Tug, #2, F/VF untagged error		10.00
433		#97898, 11x10, pp/vv, F/VF	1.00	Q. === OTHER MISC. ITEMS ===			
434		#97898, 11x10, pp/vv, VF, on paper	1.50	465	909- 5¢ Overrun Nations set of 13 stamps 921 complete, VF/XF, MNH		1.00
435		#99899, 11x10, pp/vv, F/VF	10.00	466	3391 33¢ Wile E. Coyote pane of 10 cut from btm right of press sheet, XF		5.00
436		(17) mixed PNCs with incision style A, (5) 11x10 pp/vv, (12) 10x10 pv/vp, includes #89888 on paper, 11x10, overall F/VF	12.00	467	3534 34¢ Porky Pig pane of 10 cut from btm right of press sheet, VF		5.00
437		(9) mixed PNCs, incision style B, 10x10, pv/vp, F/XF, some still have paper on backs	5.00	468	TD30 test stamps MNH pair, XF/S, SCV \$40		11.00
438		(17) diff PNCs with incision style C, (15) ...	10.00	469	TD96v test stamps, line strip of 4 with large holes, F/VF close @R, SCV \$125		20.00
				470	3363d 33¢ Deer Christmas Bklt 20 stamps unfolded missing all diecuts, Rare Item, S centering		425.00
				471	O127/ (65), used singles and multiples of modern O148 official stamps, NO#s F/VF		2.00
				472	U605e [20¢] Remember Paralyzed Veterans entire envelope, black omit. error SCV \$350, XF/S		80.00

... PNC³ Spring Auction # 54

Lot #	Item	Description	Min. Bid
Q. (con't) === OTHER MISC. ITEMS ===			
473	2781	29¢ Spirit of St. Louis sheet stamp on hand painted and numbered FDC cachet by M. Houge, #5 of 18, XF/S	\$20.00
474	3330	55¢ Billy Mitchell sheet stamp on hand painted and numbered FDC cachet by M. Houge, #10 of 15, XF/S	25.00
475	(100)	diff. mostly used Germany stamps off paper, no faults, VF/XF	5.00
476	(50)	diff. used off paper New Zealand stamps, no faults, VF/XF	4.00
477	(50)	diff. used off paper Swiss stamps, no faults, VF/XF	4.00
R. === CLUB DONATIONS ===			
478	1903	9.3¢ Mail W. PS-3, #1, VF, line VF/XF	0.75
479	2112	[22¢] "D" Eagle, PS-3, #2, VF/XF	0.75
480	(7)	diff PS-3, (3) S/A, (4), WAG, VF/XF, 5¢/25¢, face value \$1.50	1.25
481	1907	18¢ Surrey, PS-5, #6, F/VF, line F/VF	0.75
482	2260	15¢ Tug, PS-5, #1, VF	0.75
483	2523	29¢ Rushmore, PS-5, #7, F/VF	1.50
484	2604	[10¢] E&S, PS-5, #S22222, XF	1.00
485	2903	[5¢] Mountains, PS-5, #11111, S	0.50
486	3055	20¢ Pheasant, PS-5, #1111, VF/XF	1.00
487	3281	33¢ FOC, PS-5, #4444A, F/VF	1.75
488	3769	[10¢] Lion, PS-5, #S11111 VF/XF	0.50
489	3775	[5¢] Seacoast, PS-5, #B111, VF/XF	0.25
490	(24)	used PNC Flag singles on paper, F/VF	0.25
491	2464	23¢ Lunch wagon, PS-5, used, #2, XF	0.75
492	2518	[29¢] Tulip, used PS-5, #1111, VF	0.75
493	(17)	unused DAV and USO reply cvrs, VF/XF, (5) have PNCs, others do not.	1.00



----- end of auction -----
Bidding closes Thursday, March 31



(from page 29, Readers' forum)

Inconsistencies and errors are not uncommon in the bulletins. Note this sequence in the 2016 Flag's five formats' "paper type" quotes of the Jan. 21 edition:

BCA bk/10, "Phosphor Tagged Paper, Overall"

AP bk/20, "Nonphosphored Type III, Block Tag applied"

BCA bk/20, "Phosphor Tagged Paper, Block"

BCA coils/100, Phosphor Tagged Paper, Block

AP coils/100, Nonphosphored Type III, Block Tag applied.

Keep in mind in a "lean supply chain" era that stamp suppliers are free to swap phosphor tagging methods as costs dictate. (Note BCA's choices just for their two booklet formats above.) But two different phrases using "Block" beg the question of a technical difference of which we're unaware -- or did someone forget to change "Block" to "Overall" in a copied line?

Membership Update

New Applicants

Dominic Sgro (2308)
P.O. Box 90

Zephyr, ON L0E 1T0
CANADA

DLSGRO@ruralwave.ca

John A. Grant (2309)
P.O. Box 651

Nixa, MO 65714-0651

Frances J. (Frank) O'Brien (2310)
30085 Avenida Elegante
Rancho Palos Verdes, CA 90275-3042

fjobrien@aol.com

Lee Sagendorf (2311)
2120 Dufour Ave #1
Redondo Beach, CA 90278

sagend@msn.com

Phillip T. Shafer (2312)
290 N. Jay St

West Milton, OH 45383

pshafer@woh.rr.com

Albert N. Gore, III (2313)
10605 Marabou Ct

Raleigh, NC 27614-9082

algore3d@gmail.com

Resigned

A.E. Buzz Jehle (1330)
James G. Wadman (1885)
Sverre J. Ludvigsen (2036)
Julin W. Jakobson (2260)
Wayne Weber (2276)
Dennis T. Parker (2291)
Desmond T. Herbert (2295)

Dropped for Dues Non-Payment

Kenneth J Moreau 447
Milton L Maas 498
Joseph Papaj 716
Robert Hinkley 744
(please see page 39)

Classified Ads

PNC used singles, used strips, MNH PS5s. Great prices! Guaranteed quality! No hassles! Visit <http://www.angelfire.com/ca5/HimesPNCs> or send LSASE for lists to John Himes, PO Box 453, Cypress, CA 90630-0453. Please specify what you collect. Or e-mail johnwhimes@yahoo.com. Member 957L

* * *

USED PNC'S on and off cover. Our new 8-page list #15-3 of Used PNC's is yours free. We also have a free new 33-page list of MNH PNC's, Booklets, Booklet Panes, many by plate number and position. Specify which list is wanted. Vic Collinino, PO Box 300-P, Stratham, NH 03885-0300 or email your name and address to vimco@comcast.net. Member 748

* * *

Wanted: 1906 17¢ Electric Auto used pnc single with purple machine cancel. Any number. I have used pnc untagged errors for possible trade. Please eMail a scan and your price to: Dan Forgues at pnc3nv@aol.com. Member 164L

CLASSIFIED AD rates are 6¢ per word, with a minimum cost of \$3.00 per insertion. (Only members may advertise in *Coil Line*.)

PNC³ members are entitled to two free 50-word ads per year. (There is a 10¢ charge for each word over 50 with free ads.) Contact the editor to place an ad. (See page 26.)

PNC³ Members Count

Previous Members	532
New Applicants	6
Resigned	-7
Dropped for Dues Non-Payment	-43
PNC³ Members	488

Coil Topics Index this issue...

5¢ Grapes, new issue 2016.....	28
<49¢> Flag & Clouds, phosphor tagging, Ashton Potter, method mix-up.....	29
23¢ USA, #1111 errant bluish line.....	29
10¢ Pears, #S111111 Catalog Corner.....	30
8.5¢ Tow Truck, precancel gap, auction lot.....	40
10.1¢ Oil Wagon, precancel gap, auction lot.....	40

Display Advertising Rates *Coil Line*

• Full Page	\$ 100.00
• Half Page	\$ 80.00
• Third Page	\$ 65.00
• Quarter Page	\$ 45.00
• Sixth Page	\$ 35.00
• Eighth Page	\$ 20.00
• Back Cover	Add \$ 50.00
• Inside Cover	Add \$ 25.00
• Color Ad (for full page)	Add \$ 100.00
• Color Ad - Electronic Version	Add \$ 25.00

(Discounts available for multiple insertions.)

(from page 38,

Membership Update)
 Jack V Ward 875
 Stanley H Roe 956
 James R Haislet 985
 Leroy N Cooper 1380
 John E Remakel 1409
 Joseph Gadbois 1491
 Larry J Ackerman 1687
 George I Woodburn 1827
 Charles Cook 1877
 Nello J Cristiano 1880
 Norvan R Fulton 1903
 Douglas Walker 1914
 Thomas E Kensey 1956
 Roland Austin 1980
 Gabriel F Vega 1995
 Jan Szpyrka 2016
 Stanley G Harris 2019
 Delmar F Bice 2064
 James D Gebhard 2076
 Richard K Matta 2123
 John F Halliday 2161
 A Stanley Hietala 2166
 Dave Cockrill 2193
 Daniel L Van Dyke 2203
 David A Wilbur 2219
 Don Palazzo 2249
 Albert E Canalizo 2251
 Theodore L Strauss 2262
 Gregory A Mews 2263
 Donald A Anderson 2264
 Peter Lirot 2267
 Louis A Schenfeld 2275
 George H Shawcross 2282
 Ken Forrester 2284
 William L Mayer 2288
 Mark Stowe 2294
 Don Johnson 2297
 Jack Wallin 2298
 Laurence Pennell 2300

Contact John Himes (see page 26) to renew.

Spring Auction #54 Images



Lot 36



detail, lot 167



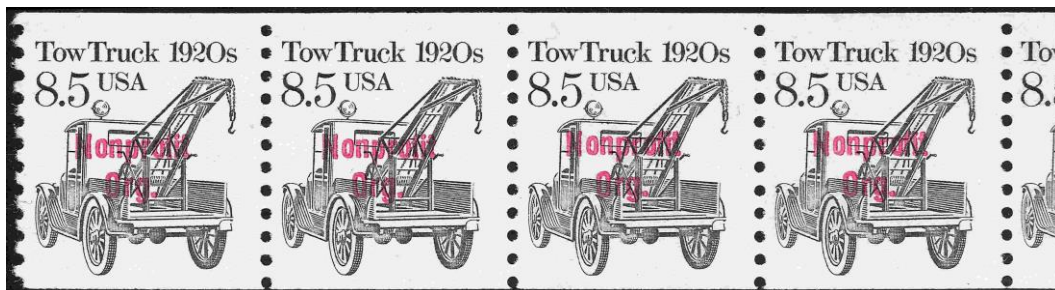
Lot 167



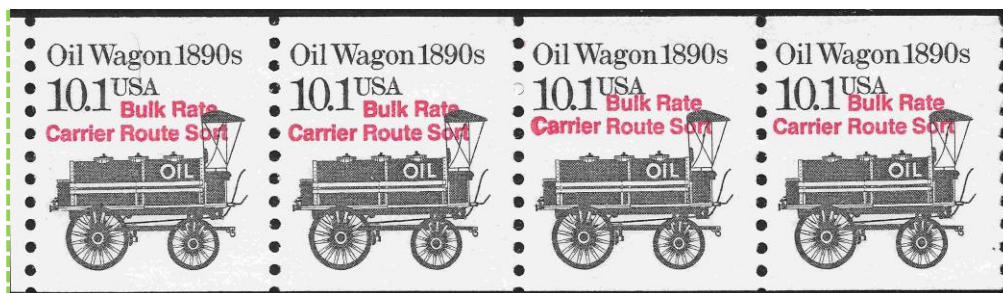
detail, lot 212



Lot 212



Lot 258
(cropped)
(see front cover for detail)



Lot 259
(cropped)
(see front cover for detail)



Lot 288

Call for Nominations – 2016 Board Elections this June

2016 is an election year for your club officers. Elections will be held in June, with ballot counting in July so that we can announce our new officers and Board at the Annual Meeting in August.

Now is the time to consider how you can help the club by running for an office or a seat on the Board. Check the inside cover of your *Coil Line* or the website to see the officer and Board positions. It's important that we have more than one person running for each position so that members might have a choice in casting their vote. If you've recently retired and are looking for a way to use newly found time for a good cause, why not spend some of it in support of our hobby? Most of the positions don't require a lot of time.

Please contact the Nominations Committee chair, Gene Trinks, at 623-322-4619 or gctrinks@cox.net to discuss how you can help.

New Member Applicants

Club members are reminded that names of applicants are published for review (page 38 this issue). A member who questions the suitability of a prospective member should contact the Membership Committee Chair Michael Conway with the objection (mjconway@hotmail.com or 203-268-5896.) Applicants are accepted as members one month following notice in *Coil Line* if no objection is made.