



Coil Line



Journal of the PNC³
Plate Number Coil Collectors Club

www.pnc3.org

American Philatelic Society Affiliate # 185

October 2016

Vol. 29, No. 10

Whole No. 340

It's Auction Time!

Check out these featured lots



Lot # 12



Lot # 418



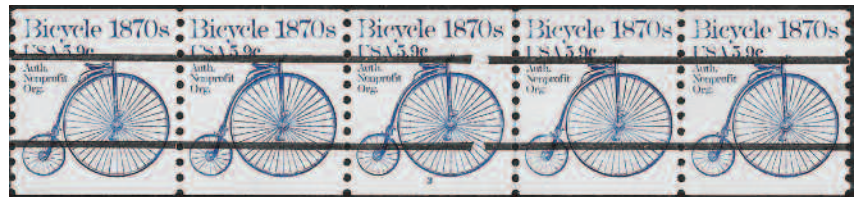
Lot # 429



Lot # 436



Lot # 438



Lot # 32



Lot # 44

The PNC³ Fall Auction listings begin on Page 125

More lots featured on back cover



Lot # 209

Coil Line

Journal of the Plate Number
Coil Collectors Club (PNC³)

Published by: PNC³

ISSN: 1931-5112

Editor: Vickie Canfield Peters

vcanfieldp@gmail.com

Print Edition Mailings: Brian and Cory Snippen

snippenb@gmail.com

Digital Edition Emails: Frank Covey

ecoilline@comcast.net

Advertising Rates (single insertion)

Full Page	\$100.00	Eighth Page	\$20.00
Half Page	\$80.00	Business Card	\$20.00
Third Page	\$65.00	Back Cover	Add \$50.00
Quarter Page	\$45.00	Inside Cover	Add \$25.00
Sixth Page	\$35.00	Color, full page	Add \$100.00

(For Color Ads, Digital Version only, Add \$25.00)

A check or money order, made out to PNC³, must accompany camera ready ads. Advertising copy must be submitted by the first of the month prior to the month of publication. Please send all copy to Vickie Canfield Peters, **Coil Line** Editor, 11911 E. Connor Road, Valleyford WA 99036.

Classified ad rates are six cents a word per issue with a minimum of \$3.00 per ad. Members receive two 50-word ads per year per member at no charge. There is a 10¢ per word cost for more than 50 words.)

All material, including articles submitted, will be edited and formatted for inclusion in **Coil Line** and must be received by the first of the month prior to the month of publication.

Coil Line reserves the right to edit copy as necessary.

Coil Line is published monthly and is available digitally with annual member dues of \$14. A printed version of **Coil Line** is also available. To U.S. addresses, to receive printed edition add \$14 for Bulk Mailing; add \$22 for First Class Mailing. To Non-USA addresses, add \$27 for mailing. Past print issues of **Coil Line** are available at \$2.50 per copy (quantities limited).

All material is copyright 2016. All rights reserved. Material in this publication may be copied or reproduced with acknowledgment to **Coil Line**. Opinions expressed by the authors and writers are their own and do not necessarily reflect those of the editor, publisher or membership of the Plate Number Coil Collectors Club.

All content, letters to the editor and advertising questions should be addressed to the editor. For mail delivery problems, contact the mailer below.

Postal mailings prepared by: Brian Snippen, PO Box 5542, Albuquerque, New Mexico 87185-5542. Email: snippenb@gmail.com. Phone: 505-404-1624.

Mailed from Zip Code 87185 on or near September 30, 2016.



Scott #1259 Plate #1 (issued July 19, 1988)

PNC³ Contacts

PNC³ Website: www.pnc3.org

Allan Clapp, Webmaster: email webmaster@pnc3.org

(For **Coil Line**-related matters, please see column at left for appropriate contact.)

Elected Officers

Robert Thompson, **President**, 12431 Golden Thistle, Houston, TX 77058. email: rthompson@pncvarieties.com phone: 713-397-1772

John Himes, **Vice President**, PO Box 453, Cypress CA 90630-0453. email: johnwhimes@yahoo.com phone: 714-826-8552

Daniel Farrar, **Secretary**, 3386 Excalibur Circle NW, Canton, OH 44708, email: farrard2@gmail.com phone: 330-477-6913

Mel Borofsky, **Treasurer**, 101 W. Sterling Way, Leesburg, FL 34788-2781, email: melborofsky@comcast.net 352-483-1408.

Gene Trinks, **Past President**, 16415 W. Desert Wren Ct, Surprise AZ 85374. email: gctrinks@cox.net phone: 623-322-4619

Jill Ambrose, **At Large**, PO Box 54622, Cincinnati, OH 45254-0622. email: jillambrose@zoomtown.com phone: 513-231-4208

Tom McFarland, **At Large**, PO Box 756, Princeton Junction NJ 08550. email: philatomic@verizon.net phone: 609-273-4103

PNC³ Catalog Committee: Jill Ambrose, Frank Covey, Andy Jakes, Tom McFarland, Gene Trinks, Peter Tukker

PNC³ auctioneer: Joe Sedivy

Coil Line Production

Editor: Vickie Canfield Peters

Digital Edition Producer: Jill Ambrose

Senior Consultant: Gene Trinks

Technical consultant: Alan Thomson

Writers: Frank Covey, Doug Iams, Gene Trinks

Contributing Writers: John Himes, Robert E. Thompson, Bob Rabinowitz, Rob Washburn

Proofreaders: John Himes, Michael Mules

Printing: State Wide Printing, Albuquerque NM

Printed Distribution: Brian and Cory Snippen

Digital Edition Distribution: Frank Covey

Subscriptions: Daniel Farrar



President's Message

I've been told that Stephen Esrati passed away recently. He published his own newsletter for plate number coils (PNCs) and plate numbers for 10 years and, at one time, was one of the large PNC dealers out there. He will be sorely missed.

This is the first issue of **Coil Line** with Vickie Canfield Peters as our new editor. Ronald Blanks has served as our editor since January 2009. Ron has done a wonderful job for PNC³. If you get a chance, take a moment to thank him for his years of service.

Jeffrey Haas has stepped down as our newly elected treasurer for the club. Melvyn Borofsky has volunteered to take on that position. Since Jeff ran unopposed in our recent elections, I have appointed Melvyn to that position for the term through September 1, 2018. Dan Farrar (our secretary) will be taking on some of the membership duties that the treasurer has done in the past. Welcome aboard to Melvyn, Tom McFarland and Dan Farrar.

Be sure to check out all of the items in the fall auction. Joe Sedivy has done a wonderful job running the club's semi-annual auction. He has always been available to answer any of my questions and has made scans of specific items for me, if I had any questions.

Allan Clapp has completed a new search engine for general searches on our website. He is working on another search engine that will have the ability to search through old issues of **Coil Line** and *The Plate Number*. This will take several months before it is completed.

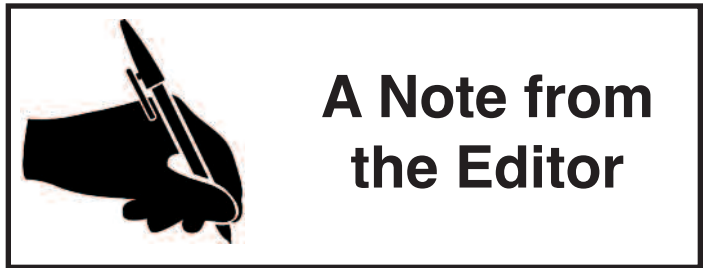
From the Catalog Committee, they are expecting to have a new glossary and Values List available later this fall. The last Values List is from 2014.

Finally, I want to thank Steven McCollum for send-

Inside this Issue

President's Message	119
A Note from the Editor	119
Membership List Available	120
Collector Queries	120
Catalog Corner	121
14¢ Iceboat with Interesting Anomaly . . .	122
USA Non-Profit Web Ripple	122
PNC ³ Auction #55	125

ing me copies of a coil newsletter that I wasn't familiar with. It is called *Coil Collector!* and it was published monthly by Ron Bowman from January 1984 to September 1985. He is not a member, so if anyone has any other information about Ron, I would appreciate it if you would contact me.



Hi! My Name is Vickie

That's what my name tag would say if you were to see me at a stamp show. As of this issue, I am the new editor of *Coil Line*. I look forward to working with many members as I am relying heavily on reader participation. I know nothing about plate number coils and hope you will all be patient with me as I learn.

I am a retired weekly newspaper editor, originally from Pennsylvania, who now splits her time between Florida in the winter and Washington State in the summer. I currently edit the *Airpost Journal* for the American Air Mail Society and the *Polonus Bulletin* for the Polonus Polish Philatelic Society. I've won gold medals with each and hope to repeat that accomplishment with *Coil Line*.

As a former newspaper editor, I am very deadline-oriented. So deadline conscious that I've been known to get up at 3 a.m. because there's something left undone from the day before. I strive to do the best I can with everything I do and that includes my editing. I will edit articles for content, grammar and spelling but I will also check with the author if I'm unsure of a term or phrase. Thankfully, Gene Trinks sent me a glossary of terms (some with pictures!) to aid in my education.

It's my goal to provide a quality newsletter each and every month, one that will both inform, educate and maybe even entertain. I welcome letters to the editor along with articles and illustrations. I will ask that articles be sent in Word and illustrations be attached to the email, not embedded in the text. Microsoft Word establishes parameters that do not allow me to improve the quality of illustrations sent via that method. Illustrations can be TIFFs, JPEGs or PDFs, scanned at least 200 dpi, preferably 300. If you have questions, don't hesitate to contact me. I'm always willing to help.

I'd also appreciate feedback on this issue of *Coil Line*. Please let me know what you like, what you don't, what you'd like to see more of (or less of) and I'll work to meet your expectations.

Vickie Canfield Peters

Membership List Available

As your new incoming vice president, I've been thinking about my new role in PNC³. Vice presidents aren't expected to do anything, right? Hmm. That's not me.

So I've been thinking of ways I can help our club and it dawned on me that a few of our members have asked for a copy of our membership list in the past four years while I was treasurer. These are members who, in the good old days of the club, remembered getting a hard copy mailed to them with **Coil Line** about once a year. Unfortunately, with the cost of publication skyrocketing in recent years, we've had to drop that practice. So, what to do?

I have permission from my fellow board members to find a way to distribute the club member list to those of you who would like a copy. Here's what we're going to do.

First, we will not include any member on the provided list who has told us they do not wish to have their name published. That's only 29 members as of this writing. Those of you who have requested privacy can be assured that we will not include your name and information on this list. If you're not sure if you have opted out and want to be sure, email me or snail-mail me at the address provided on the masthead page, and I'll make sure your status is adjusted accordingly. But do this prior to November 1, as I will consider that the cut-off date for any changes. Likewise, if you opted out, but now would like to be included, let me know that, as well.

Second, I will provide the list, starting on November 1, to anyone who provides me with an email address. The list will be sent in Microsoft Excel format. That should work with both PCs and Macs. If you prefer another format, sorry, but you can easily find someone with one of those devices to convert it for you to your preferred format. There will be no cost for providing you the list via email. All you have to do is ask!

Now, if you don't have a computer and absolutely must have a hard copy, I will print a few of those and provide them to you at a cost of \$5. I've checked and that's just about what it will cost me to print off copies and mail them out. Just send me a check or money order for \$5, payable to PNC3, and I'll get it mailed out shortly after November 1.

What will be included on the list? Names, membership numbers, addresses, phone numbers, email addresses and collecting interests. The reason most members want this list, besides simply contacting other members they've gotten to know over the years, is to find others with their own collecting interest and to try to help one another with that area of specialty.

What other ideas do you have for things I might work on to provide additional help or services to our members? I'm all ears!

John Himes



Collector Queries

A Colorful Quandary

I just bought part of one of our long-time member's collection and going through it I noticed an interesting oddity. It is a used 1c Kestrel (Sc. 3044) PS5 with the original BYCM color order in the plate numbers. What is odd about it is some of the digits in the plate number are doubled.



The cyan (bluish) digit has a lighter twin shifted up from the main (stronger) one and the magenta (reddish) digit has lighter twin shifted down from the main one. Because I have difficulty seeing much of a contrast for yellow against a white background I am uncertain if the yellow is also doubled, but the black digit appears normal. Only the plate number shows obvious signs of doubling; the rest of the stamp appears normal.

Does anyone have an explanation for the doubling, and why one color is shifted in the opposite direction of the other?

Doug Iams

Welcome!

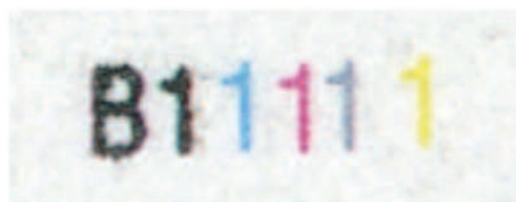
If you are a new **Coil Line** reader, we're glad you're here! Now in our 29th year, PNC³ is a community of stamp collectors specializing in United States' plate number coil issues.

The first PNCs were issued in 1981 and our club was founded in February 1988. **Coil Line's** first issue was published in May of that year and serves (along with other club literature) to inform collectors on the many aspects of PNCs. Studies include scarce numbers, varieties, printing methods, market values, PNCs on mail and more.

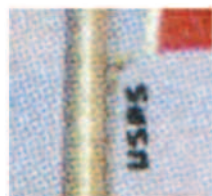
Thank you for visiting and we hope you'll come back often!

*Like to read about it?
Write about it in Coil Line!*

Catalog Corner with Frank Covey



<47¢> Flag and Clouds
Forever (SA) BCA
Plate **B11111**
PNC ID **2016-7**



**USPS
Microprinting**

The <47c> Flag and Clouds coils from Banknote Corporation of America (BCA) was found by accident in my Macomb IL 61455 post office on July 18, 2016. It was part of a new shipment received that day from the Kansas City SDO. It bears a B11111 plate number that occurs every 31 stamps along the roll.

It comes in stamp sticks up to 10 rolls high as shown at the bottom of this page. The sticks are held together by tiny bridges that are pieces of uncut paper between the rolls. It's possible to collect strips with two or more rolls still attached (coil blocks).

These are like the stamp sticks produced by Sennett Security Products (SSP). The leader strip is printed in blue ink instead of black (see below) and has "MANUFACTURED BY BCA" on the leader strip. The die cut on this issue (2016-7) is a PV (peak/valley) die cut just like it was on the SSP version.

This new issue came out unannounced. This no doubt was caused by the purchase of BCA by CCL Label from Sennett Security Products (SSP). SSP owned BCA, who did their printing, but the SSP products came with an "S" prefix. That has now changed. The first issue to reuse the "B" prefix was the Star Quilts issue (2016-6).

USPS is microprinted underneath the flag near the pole. A 2016 date is printed in the lower right corner.

This is the third issue to use the same Flag and Cloud design. The first was the Ashton Potter version (2016-2) that is still in use. The second was the SSP version (2016-3) which is on the way out and this issue (2016-7) which will probably show up in more and more post offices.



14-Cent Iceboat with Interesting Anomaly

John Himes

Recently, member Jim Lowery came across an interesting specimen of the 14-cent Iceboat coil stamp (Figure 1), U.S. Scott #2134. Unfortunately, it's not a plate number stamp, but just the same, it's eye catching. Just looking at the stamp itself, nothing unusual comes to light (pun intended). But under UV light and normal room light (Figure 2), note the two bright horizontal lines of tagging running across the face of the untagged the stamp. How did this happen?



Figure 1



Figure 2

The initial theory was that an untagged error stamp had somehow been precancelled with taggant, not black ink. That two such bizarre things could have happened to the same stamp seemed unbelievable. So, Dan Forgues examined the width between the two parallel tagging lines and the width is not consistent with that of precancel mats, ruling out that theory. Looking at the stamp under the same UV light, but with the room light completely dark, the image in Figure 3 shows that actually there is some trace of taggant over much of the bottom half of the stamp. This is truly an oddity.



Figure 3

It would be amazing to find this same oddity on a plate number stamp. If anyone has one in their collection, it would be interesting to compare your copy with the one found by Jim. Be sure to let me know if you have one and I'll put together a follow-up article for the journal. Or, if you have a good idea of what might have caused this anomaly, be sure to let us know.

Dan shared that he used the following equipment to get these great images: a Raytech LS-218 UV light (found on eBay, used), a Canon LiDE 210 scanner (again, found on eBay), a Bodelin USB digital microscope with stand (wait for it . . . eBay) and an Apple MacBook Pro Laptop computer.

If anyone else has an interesting stamp like this that has not been seen by the members before, let me know and I'll be glad to help you share it via **Coil Line**.

The Fall Auction Begins on Page 125

USA Nonprofit Web Ripple

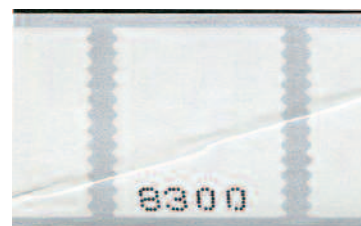
2016-5

Frank Covey

Earlier this year I was lucky enough to get two matching back numbered rolls of the USA Nonprofit issue from the caves in Kansas City. Matching rolls have the top and bottom back numbers in the same position relative to the plate number throughout the roll. What surprised me about these rolls was the presence of what has come to be known as a "web ripple." These images are the front and back of the same stamps with the "web ripple."



I showed examples of these to an Ashton Potter representative at World Stamp Show 2016 earlier this year. Ashton Potter is the printer of this issue and had a booth at the show. She referred to this as a "web ripple" and thought it to be an anomaly in the web paper before the stamps were printed. PNC³ members who saw examples in New York and Portland doubt this explanation because there is no void in the printing as you would expect there to be if the web was compromised before printing.



Another section of the bottom back numbered roll with back number 8300 that exhibits the web ripple.

The web ripple occurs throughout both rolls. When top and bottom back numbered strips with the web ripple are put together, it is obvious the ripple occurred while the two rolls were attached to one another. My rolls came from the middle of the web. I believe the rolls above and below mine most likely have the web ripple, too. I think it would be possible to observe on cover so keep your eyes open for a used example.

Current Plate Numbers, Roll Sizes, Die Cuts & Tagging

Issue	Plate#	Roll	Freq	Cut	Tag
► 1¢ Apples	P111111	3k, 10k	27	S	
1¢ Bobcat 2012	P1111, P2222	3k	27	S	
1¢ Bobcat 2015	P1111	10k	27	S	
1¢ Bobcat	S111111	10k	31	w	
1¢ Tiffany Lamp 2008	S11111	3k	31	w	
	≠ 10k			w	
2¢ Navajo Jewelry	S111111	10k	31	w	
3¢ Silver Coffeepot	S1111, S2222	10k	14	w	
4¢ Chippendale Chair 2013	P1111	10k	24	w	
4¢ Chippendale Chair 2007	S1111	10k	14	w	
5¢ Toleware	S1111111	10k	14	w	
5¢ Grapes	P111111	10k	27	S	
10¢ Clock 2008	S1111 ≠	10k	31	w	OA
	S2222			w	
10¢ Clock 2006 ≠	S1111	10k	14	w	
10¢ Pears	S111111	10k	27	PV	OA
21¢ Lincoln ≠	C111	100	20	PV, VP	OA
<22¢> Penguins ⁽¹⁾	S11111	100	31	PV	OA
34¢ Hummingbird ≠	P11111	100	31	VP	S
34¢ Hummingbird ≠	P22222	100	31	VP	OA
<35¢> Coastal Birds ⁽²⁾ (4 different designs)	P1111	100	32	VP	OA
45¢ Weather Vanes ≠ (5 different)	S1111111	3k, 10k	25	S	S
46¢ Kaleidoscope Flowers ≠ (4 different)	S11111	3k, 10k	28	PV	S
46¢ Patriotic Star ≠	S111	10k	27	PV	S
49¢ Ferns (5 different)	C1111	3k, 10k	30	VP	OA
(5¢) USA Star	P111	10k	27	S	
(5¢) Art Deco Bird	P1111, P3333 P2222, P3333	3k 10k	27 "	S "	
(5¢) Sea Coast	P7777, P9999	3k	27	S	
(5¢) Sea Coast	B111	500 10k	10 "	w w	
(5¢) Sea Coast 2004 (with luminescent ink)	S1111	3k 10k	14 "	w w	
2008	S11111	500	31	w	
(10¢) Snowflakes (5 dif.)	C11111111	10k	30	VP	
(10¢) Stars & Stripes (3 different)	S111	3k, 10k	27	PV	
(10¢) Banner	S111	10k	27	S	
(10¢) Banner	V111, V222, V333	3k, 10k	10	VP	

Printer IDs by # Prefix: **P** = Ashton Potter
B = Banknote Corp. of America **V** = Avery-Dennison
C = CCL Label **S** = Sennett Security Products

(10¢) Banner	S111	500	31	w	
--------------	------	-----	----	---	--

Issue	Plate#	Roll	Freq	Cut	Tag
(25¢) Star Quilts (2 different designs)	B11111	3k, 10k	28	PV	OA
(25¢) Spectrum Eagle " (6 different designs)	P1111 V11111 and V11112	10k 3k, 10k	27 30	S	OA
(25¢) Eagle 2003 (10 diff.)	S3333333	3k	20	S	
S1111111, S2222222, S3333333 (weakly tagged)	S3333333	10k	"	"	S
(25¢) Eagle (10) 2005	S1111111	3k	25	S	
(25¢) Eagle (10) 2004	S1111111	3k	10	w	
► <47¢> Patriotic Spiral	P1111	10k	27	S	OA
<49¢> Ferns 2014 (5 diff.)	C1111	10k	30	VP	OA
<49¢> Ferns 2014 (5)	S1111	10k	25	PV	S
<49¢> Ferns 2015 (5)	S1111	3k	25	PV	S
<49¢> Red-White-Blue (4 different)	C11	10k	32	VP	OA
		"	"	"	S
	C12	"	"	"	OA
<47¢> 2016 Flag & Clouds	B11111	100	31	PV	OA
<49¢> 2016 Flag & Clouds ⁽³⁾	P11111	100	31	VP	OA
<49¢> 2016 Flag & Clouds ⁽³⁾	S11111	100	31	PV	OA
<49¢> 2014 Spangled Banner	C11111	100	20	PV	OA
	"	"	"	VP	"
<49¢> 2014 Spangled Banner	S11111	100	32	PV	OA
<49¢> 2014 Spangled	P1111, P2222	100	31	VP	OA
<> 2013 Flags-Seasons* ≠	P1111	100	32	VP	S
<> 2013 Flags-Seasons* ≠	S1111	100	32	PV	S
<> 2013 Flags-Seasons* ≠	V1111	100	20	PV	S
* (4 diff.)	"	"	"	VP	"

Stamps labeled (1) "Additional Ounce" rate now 21¢,
(2) "Postcard" rate, now 34¢,
(3) "Forever" rate, now 47¢ (as of April 10, 2016;

Key to Symbols

► **new number or variety** ◊ **update or correction**
≠ new "sold out" (strips of 25/100 with PNC), or no longer shown in *USA Philatelic* (USPS catalog)
?? unreported attribute <> Value when-issued
Freq – frequency or interval of # appearing in roll
Cut – **w** = water-activated gum (perforated);
PV = peak/valley die cut; VP = valley/peak;
S = serpentine without corner variation.
Tag – phosphor tagging if not blank/white: S = surface phosphor with smooth appearance; U = surface phosphor with uneven or grainy look; OA = overall.

Notes to this Report

—Ron Blanks

Recently issued 1¢ Apples, <47¢> Patriotic Spiral added. Since both are from Ashton Potter and on liner paper spaced apart, die cut expected to follow 5¢ Grapes.

Membership Update

New Applicants

Stephen Tucker (2341)
2430 Amoretti St.
Henderson NV 89052
sttucker1@aol.com

David T. Robinson (2342)
P.O. Box 90672
Rochester NY 14609
saferace@rochester.rr.com

Bill Calder (2343)
1302 SE 107th Ave.
Portland OR 53887-0809
travelwithbc@comcast.net

John Schwenn (2344)
168 163rd Pl. SE
Bellevue WA 98005
schwennji@centurylink.net

Membership at Beginning of Month 521
New Applicants +4
Membership at End of Month 525

Coil Line Classifieds

USED PNCs on and off cover. Our new eight-page list #16-3 of Used PNCs is yours free. We also have a free new 33-page list of MNH PNCs, Booklets, Booklet Panes, many by plate number and position. Specify which list is wanted. Vic Collinino, PO Box 300-P, Stratham, NH 03885-0300 or email your name and address to vimco@comcast.net.

9/17

PNC USED singles, used strips, MNH PS5s. Great prices! Guaranteed quality! No hassles! Visit <http://www.angelfire.com/ca5/HimesPNCs> or send LSASE for lists to John Himes, PO Box 453, Cypress, CA 90630-0453. Please specify what you collect. Or email johnwhimes@yahoo.com 12/16

GOT DUPLICATES you don't need? Want a nice tax deduction? Donate stamps, covers, philatelic supplies to Stamp Collecting Clubs for Kids, a 501(c)3 non-profit organization. SCCFK is dedicated to helping beginners and starting children (and adults) in stamp collecting. See website www.stampcollectingclubsforkids.org. Our 14th year. 4/17

Regional Meeting Hosts Sought

Several members have made it a habit to promote meetings in their areas. New meetings are encouraged as a way to share your hobby and enjoy the fellowship of like-minded collectors.

For information about hosting a meeting, contact regional meeting chairman Tony Bruno, PO Box 624, East Lyme CT 06333-0624 or email tbbee@aol.com.

(PNC³ meeting notices are advertised at no charge in the newsletter. Please submit details to the editor three months in advance of the meeting.)

Coil Line Display Advertising Rates

(per insertion)

Full Page		\$100
Half Page		\$80
Third Page		\$65
Quarter Page		\$45
Sixth Page		\$35
Eighth Page		\$20
Back Cover	Add	\$50
Inside Cover	Add	\$25
Color ad (full page)	Add	\$100
Color ad (electronic version)	Add	\$25

(Frequency discounts available)

Classified Ad Rates

PNC³ classifieds are available to only PNC³ members at a cost of 6¢ per word with a minimum of \$3 per insertion.

Membership in the society includes two free 50-word classifieds per year. There is a 10¢ per word cost for every word over 50.

Send ads to the editor using the information on the inside front cover.

Mailing List Available

The club mailing list can be rented. A one-time usage fee of \$50 includes preprinted labels.

Contact secretary Daniel Farrar

farrard2@gmail.com

for more information.

Terms & Codes Used

1. Numbers in () indicate total number of items in lot; [] number of items within a subset of the lot.
2. All lots are listed with a minimum starting bid and bids must conform!
3. For precancel strips: If has gap, it's listed; no listing=NO GAP!
4. In case of a tie bid, the earliest postmark or email date wins.
5. All winning bids will be at one bidding increment over the second high bidder.
6. I will not accept phone bids; bids must be only via mail and email! (Please submit Bid Sheet on wrapper for mail use.)
7. R = right, L = left, HVY = heavy, Lt = light, BMC = black machine cancel, PMC = purple machine cancel, FDC = 1st day cover or cancel, S# = plain strip, sh. = shoulder, RHC = red hand cancel, BHC = black hand cancel, @ = at, btm = bottom, cvr = cover, [cvr] = with window, rtn = return, Rec'd = Received, SCV = Scott Catalog Value, VAL = PNC3 Values List.

8. ALL Bids must be in the auction director's hands by the closing date **Saturday, October 29, 2016**, and not just postmarked by that date.

9. Bids not conforming to the bidding increments will be lowered according to the proper increment.

10. "Buy Bids" will be accepted, but realize that only one Buy Bid can be honored and that is the first one, and at only one advance over second high bidder.

11. IF you add a "+" (plus sign) to your bid, I will use it to break a tie only if needed.

12. Please, when placing a bid over the Internet, DO NOT use a spreadsheet or other such program as I have problems opening them. Just place it in standard email form. Once placed, please do not mail a confirming copy. The email address to send your bids to is PNC3auctions@aol.com. **No phone bids please!**

13. If you need to call me with questions on a lot but NOT to place a bid, please call after 9 a.m. Chicago time (773) 622-0663.

NOTE: Lots pictured marked with an asterisk (*)

BIDDING INCREMENTS:

\$.25 - to - 4.75	\$.25
5.00 - to - 9.50	.50
10.00 - to - 49.00	1.00
50.00 - to - 97.50	2.50
100.00 - to - 495.00	5.00
500.00 +	10.00

"I would like to thank all the members who donated lots for this auction and future ones since I always seem to have a backlog of them from auction to auction. Please bid on these as the money earned helps keep your dues low. Good luck in this auction to both bidders and sellers."

*Joe Sedivy
Auction Director*

Email: PNC3auctions@aol.com

— Bid sheet on back of wrapper —

Lot	Scott#	Description	Min. Bid
A. MINT PLATE NUMBER SINGLES AND PAIRS			
1	1907	18c Surrey, PS-1 #4, PS-2, #1&3, all VF/XF, lines VF/XF	\$3.00
B. MINT PLATE NUMBER STRIPS OF 3			
2	1891	18c Flag, #1, F/VF bit low, red ink transfer on gum	\$8.00
3		#1 VF/XF	\$10.00
4	1904	10.9c Hansom, (2), #1, F/VF, line XF, #2, VF, line VF	\$2.00
5		#2, VF, line F/VF	\$3.00
6	1907	18c Surrey, #1, VF, line XF/S	\$2.25
7		#1, VF/XF, line VF/XF	\$5.00
8	1908	20c Pumper, #1, XF, line F/VF	\$2.25
9	2005	20c Consumer, #1, VF/XF, line VF/XF	\$1.00
10		#3, VF, line XF	\$4.00
C. MINT PLATE NUMBER STRIPS OF 4			
11	1903	9.3c Mail W. #2, VF, line XF	\$2.00
12*	1891	18c Flag, #3, F/VF	\$400.00

Lot	Scott#	Description	Min. Bid
D. MINT PLATE NUMBER STRIPS OF 5			
13		(2), #4&5, VF	\$4.00
14		#7, F/VF	\$5.50
15	1895	20c Flag, #4, XF/S	\$80.00
16		#6, XF	\$45.00
17		#6, XF/S	\$75.00
18		#12, F/VF;	\$0.75
19	1895b	20c Flag P/C, #14, XF	\$18.00
20		#14, XF/S, with "Q" Variety on # stamp	\$17.00
21	1898Ab	4c Stage P/C, #3, VF/XF, line XF, gap 2L	\$3.25
22		#5, VF, line VF, gap 1L	\$3.50
23	1898Ab	4c Stage P/C, #6, VF/XF, line VF/XF, Line	\$4.00
24	1900	5.2c Sleigh, (2), #1&2, F/VF, lines VF	\$1.75
25		#3, F/VF close @R, line F/VF	\$50.00
26		#5, F/VF close @L, line F/VF	\$50.00
27		#5, F/VF high and left, line F/VF	\$115.00
28	1900a	5.2c Sleigh P/C, #2, VF, line VF/XF	\$2.00

Lot	Scott#	Description	Min. Bid	Lot	Scott#	Description	Min. Bid
29		#6, VF, line VF, gap 2L, PNC price list \$14.00	\$6.00	65	2123a	3.4c Bus P/C, (2), #1&2, XF/S, lines XF, rare line gap	\$50.00
30	1901a	5.9c Bike P/C, #3, VF/XF, line XF	\$15.00	66	2128	8.3c Ambulance, #1, XF/S, line XF/S	\$1.25
31		#3, S, line S	\$15.00	67	(5)	#2127a, 7.1c Tractor, #1, #2127ab, 7.1c Tractor #1, #2255, 7.6c Carreta, #1,2,3, all strips are VF/XF	\$4.75
32*		#3, XF, line XF/S, gap 1/4L, PNC price list \$500.00 as 1/2L	\$125.00	68	2128	8.5c Tow Truck, #1, XF	\$1.75
33		#4, XF/S, line VF/XF	\$15.00	69	(4)	#2132, 12c Steamer, #1,F/VF, #2, VF, #2133, 12.5c Pushcart, #1&2, VF	\$5.00
34		#4, VF/XF, line VF	\$12.00	70	2132b	2c Steamer P/C, B Press, #1, XF	\$5.00
35		(2), #3&4, VF/XF, lines VF/XF	\$25.00	71		#1, S	\$8.00
36		(2), #5&6, XF vert, line XF, line gap, #'s are clipped @ bottom	\$40.00	72	2134b	14c Ice Boat, B Press, #2, F/VF bit low	\$0.75
37		#6, XF, line XF/S line gap, PNC price list \$105.00	\$75.00	73	(3)	#2149, 18c Washington, #3333, #2149a, 18c Washington P/C, #11121 & 33333 all strips F/VF, there is a tagging shift on #2149	\$5.00
38	1903	9.3c Mail W., #5, F/VF close @R, line VF,	\$130.00	74	(3)	#2150, 21.1c Letter, #111111 & 111121, VF, #2150a, 21.1c Letter P/C, F/VF	\$5.00
39		#6, F/VF, line VF	\$125.00	75	2226	2c Locomotive, (2), #1, both paper type #I & II, VF	\$1.00
40	1903a	9.3c Mail W. P/C, #3, XF/S, line XF, gap 1/2R, PNC3 price list \$200.00	\$100.00	76	(2)	#2228, 4c Stage, block tag, #2228a, 4c Stage Overall tag, both #1, XF	\$4.50
41		#4, VF bit low, line VF/XF, gap 2L	\$25.00	77	(5)	#2252, 3c Conestoga, #1, #2252a, #2&3, dull gum, #5&6, shiny gum, F/XF	\$4.50
42	1904	10.9c Hansom, (2), #1&2, XF, lines XF, light red-violet color	\$20.00	78	2256	8.4c Wheelchair, #2, XF/S	\$1.00
43	1904a	10.9c Hansom P/C, #2, XF/S, line XF, line gap	\$10.00	79	(4)	#2259, 13.2c Coal Car, #1&2, F/VF, #2261, 16.7c Popcorn W. #1&2, VF	\$5.00
44*		#3, XF, line XF/S, gap 1-1/4R, not listed in PNC sheet	\$250.00	80	2260	15c Tug, (2), #1&2, VF	\$2.00
45	(4)	1905a, 1905b, 11c Caboose #1&2, #2131, 11c Stutz, #1&2, all VF/XF, lines XF	\$5.00	81	2261	16.7c Popcorn W., (2), #1&2, F/VF	\$2.25
46	1905a	11c Caboose P/C, #1, XF	\$2.25	82	(2)	#2262, 17.5c Racing Car, #1, XF, #2262a, 17.5c Racing Car P/C, #1, XF	\$4.00
47	1906	17c Auto, #7, XF/S, line S	\$3.50	83	2264	20.5c Fire Engine, #1, XF	\$3.75
48	1906a	17c Auto P/C, (2), #3B & 4B, VF, lines VF	\$30.00	84	2265	21c R.R. Mail Car, (2), #1&2, VF/XF	\$4.50
49		(2), #5B & 6B, XF, lines XF/S, line gaps	\$25.00	85	2280a	25c Yosemite, #1, F/VF	\$4.00
50	1907	18c Surrey, #3, XF, line XF	\$27.00	86	(7)	#2453, 5c Canoe, #1,2,3, #2454, 5c Canoe, #S11, #2902, [5c] Butte, #S111	\$5.00
51		#4, XF/S, line XF/S	\$25.00	87	2463	20c Cog Railway, #1, XF/S	\$1.50
52	1907	18c Surrey, (2), #5&6, VF/XF, lines VF/XF	\$3.50	88	2464	23c Lunch W., (2), #2&3, VF/XF, dull gum Solid Tagging	\$4.50
53		#7, VF/XF, line S	\$4.50	89	2464a	23c lunch W., #3, VF, dull gum mottled tag-ging	\$4.75
54		#7, F/VF, line F/VF	\$5.00	90		#4, VF, shiny gum mottled tagging	\$4.75
55	1908	20c Pumper, #6, XF/S, line XF/S	\$9.00	91		(2), #4&5, VF, shiny gum	\$8.50
56		#8, F/VF, line S, several short perfs @R but there	\$85.00	92	(7)	#2452, 5c Circus W., #1&2, #2452B, #A1&A2, #2452D, #S1, S2, S3, all VF	\$4.50
57		#10, VF/XF, line F/VF	\$1.75				
58		#11, F/VF close @L, line F/VF	\$25.00				
59	2005	20c Consumer, #2, F/VF, line VF	\$16.00				
60	2115	22c Flag, #10, F/VF, has tagging shift 11mm to left	\$2.75				
61		#14, XF	\$15.00				
62		SAME	\$17.00				
63	2115a	22c Flag, #3, S, tag block 17 x 22mm	\$18.00				
64		SAME	\$18.00				

Lot	Scott#	Description	Min. Bid	Lot	Scott#	Description	Min. Bid
93	2491c	29c Pine Cone, #B1, XF, type "B" liner paper	\$4.50	133		(2), #11111 & 22221, XF, shiny gum	\$6.50
94	2459Ab	32c Peach & Pear, #V11111, XF	\$5.50	134		#22221, VF, shiny gum	\$4.00
95		SAME	\$8.00	135		#22322, XF	\$5.00
96	2523	29c Rushmore, (3), #1, 2, 4, VF/XF	\$5.00	136	2913	32c FOP WAG, (11), #11111-78767, dull gum, F/VF-S, missing 2 #'s to be a complete set for the cat. Number	\$44.00
97		#7, VF	\$2.25	137	(2)	#2914, 32c FOP, WAG, #S11111, #2915B, 32c FOP S/A, #S11111, XF	\$5.50
98	2525	29c Tulip, (2) #S1111 & S2222, XF, rouletted type	\$4.50	138	2915	32c FOP S/A w/spaces, #V11111, XF	\$4.00
99	(2)	#2525, 29c Tulip #S1111, rouletted, #2526, 29c Tulip, #S2222 perfed, F/VF	\$6.00	139		SAME; \$4.50	
100	2529	19c Fishing Boat, (3), #A1112, A1212, A2424, XF/S	\$6.00	140	2915A	32c FOP, S/A, (2), #87898, 10 x 10 pv/vp & #97898, 11 x 10, pp/vv, VF	\$6.50
101	2529C	19c Fishing Boat, #S111, XF	\$2.25	141		#88888, 10 x 10, pv/vp, VF bit high	\$6.00
102	2598B	29c Eagle, #111, VF/XF	\$3.50	142		#88898, 10 x 10, pv/vp, F/VF	\$15.00
103	2599b	29c Liberty, #D1111, XF	\$5.00	143		#88898, 10 x 10, pv/vp, VF	\$20.00
104	2602	[10c] E&S, #A32333, VF/XF, Rare #, PNC price sheet \$195.00	\$100.00	144		SAME	\$20.00
105		SAME	\$100.00	145		#77777A, 10 x 10, vp/pv, VF	\$40.00
106	2609	29c White House, #8, F/VF	\$1.75	146		#78777A, 10 x 10, pv/vp, F/VF	\$15.00
107	2609	29c White House, (2), #15, VF, #16, XF	\$5.00	147	2915B	32c FOP S/A w/spaces, #S11111, XF/S	\$3.00
108	2888	[25c] G Flag, #S11111, XF/S	\$1.50	148	2915C	32c FOP S/A, #55555, 12 x 12, vp/pv, VF;	\$17.00
109	2889	[32c] Black G Flag, (2), #1111 & 2222, S	\$6.00	149		#66666, 11 x 12, vv/pp, XF	\$7.50
110		(2), #1111 & 2222, VF	\$9.00	150		SAME	\$7.50
111	2890	[32c] Blue G Flag, (2), #A1111 & A5417, XF/S	\$5.00	151		SAME	\$15.00
112		(2), #A1112 & A5437, XF/S	\$5.50	152		SAME	\$13.00
113		(2), #A1112 & A5327, XF/S	\$5.00	153		#66666, 11 x 12, vv/pp, XF, no backing paper past perfs	\$6.00
114		(2), #A1211 & A1212, XF/S	\$5.50	154	2915D	2c FOP, S/A w/spaces, #11111, 9 x 10 vv/pp, VF	\$6.00
115		(2), #A1211 & A1314, XF	\$6.00	155	3018	32c Midnight Angel, #B1111, XF	\$6.50
116		(2), #A1313 & A1324, XF/S	\$5.00	156	(6)	#3044, 1c Kestrel, #1111, BYCM, BCYM, YMCB, #3044a, #2222, 333 #4444, all VF	\$4.75
117		(7), #A1113-A1314, all diff #'s, XF/S	\$23.00	157	3054	32c Yellow Rose S/A, (2), #5566 & 7777, F/VF	\$5.50
118		(7), #A1324-A2214, all diff #'s, XF/S	\$24.00	158	3055	20c Pheasant, (2), #1111 & 2222, F/VF	\$5.00
119		(10), #A3314-A4426 all diff #'s, XF	\$34.00	159	3208	[25c] Diner WAG, #S11111, small holes, bottom pink B# 00810 on position 5, VF/XF	\$1.25
120		(2), #A3324 & A4427, XF	\$6.00	160	3228	[10c] Bike S/A w/spaces, #333, XF/S, round shoulder die cut	\$30.00
121		(2), #A3435 & A3426, XF	\$6.00	161		SAME	\$125.00
122		#A4435, VF/XF	\$50.00	162	3263	22c Uncle Sam S/A, #1111, VF	\$1.25
123		#5427, XF	\$2.50	163	3264	[33c] H Hat, WAG, (5), #1111, 3333, 3343, 3344, 3444, XF	\$15.00
124		(6), #A1111, A1324, A2214, A3113, A3314, A3433, all VF	\$10.00	164	3265	[33c] H Hat S/A, (3), #1111, 2222, 3333, VF	\$10.00
125		(6), #A1111, A1324, A2214, A3314, A3324, A3433, all VF	\$10.00	165	3270	[10c] E&S WAG, (2), #11111, small date, #22222, large date, VF	\$4.75
126	2891	[32c] Red G Flag, #S1111, XF/S	\$2.00				
127	2892	[32c] Red G Flag Rouletted, (2), #S1111 & S2222, XF/S	\$5.00				
128		SAME	\$5.50				
129	2893	[5c] Green G Flag, (2), #A11111, F/VF, #A21111, XF	\$3.00				
130	2905	[10c] Auto, (3), #S111, S222, S333, XF/S	\$4.00				
131		SAME	\$4.75				
132	2913	32c FOP, WAG, (2), #11111, XF, shiny gum & dull gum	\$7.00				

Lot	Scott#	Description	Min. Bid	Lot	Scott#	Description	Min. Bid
166	3271	[10c] E&S S/A w/spaces, #1111, VF w/bot tom aqua b#3020 on position 4, square die cut, VF	\$1.25	203	CPV31b	20c Vert. Shield & Bunting, #1, XF, large font dull gum, smooth tagging	\$22.00
167	3281c	33c FOC S/A, (2), #2222, 3433, VF	\$6.50	204		29c #1, XF/S	\$18.00
168		(2), #4444 & 5555, F/VF	\$6.50	205		32c #1, XF/S	\$15.00
169		(2), #6666 & 7777, F/VF	\$6.50	206	CPV32	29c Shield & Bunting, VF/XF	\$4.00
170	3281	33c FOC S/A, (2) #8888 & 9999, F/VF	\$6.50	207		PS-5 #1, each stamp with a diff value, L-R, 19c, 23c, 29c, 39c, 52c, XF/S	\$17.00
171		(2), #1111A & 2222A, VF	\$6.50	208	CPV33; 32c	Shield & Bunting, #11, XF	\$4.25
172		(2), #3333A & 4444A, F/VF	\$6.50	E. PLATE NUMBER STRIPS OF 6 OR LONGER			
173		(2), #5555A & 6666A, F/VF	\$6.50	209*	1891	18C Flag, PS-7, #3, XF	\$400.00
174		(2), #7777A & 8888A, F/VF	\$6.50	210	1900a	5.2c Sleigh P/C, PS-11, #5, VF/XF, line XF, gap 4R, PNC price sheet \$475.00	\$125.00
175		(2), \$1111B & 2222B, F/VF	\$6.50	211		PS-11, #5, XF/S, line VF/XF, gap 4R, PNC price list \$475.00	\$125.00
176	3305a; 33c	Berries, (2), #B1111 & B1112, XF	\$7.00	212		PS-12, #5, XF/S, line XF/S, gap 6L, PNC price list \$150.00	\$50.00
177		(2), #B2211 & B2222, XF	\$7.00	213		PS-12, #5, XF/S, line S, gap 5R, PNC price list \$150.00	\$50.00
178	(2)	#3452, [34c] Liberty WAG, #1111, #3453, [34c] Liberty S/A, #1111, XF	\$6.50	214		PS-8, #6, VF, line VF, gap 4-1/8L, PNC price list \$300.00 as 4L	\$75.00
179	3465a	[34c] Lilies, #B1111, VF	\$10.00	215	1901	5.9c Bicycle, PS-7, #4, XF/S, line VF/XF	\$3.75
180	(2)	#3476, 34c Liberty, WAG, #1111, #3477, 34c Liberty S/A, #1111, XF	\$6.50	216	1901a	5.9c Bicycle P/C, PS-12, #3, VF/XF, line VF/XF, gap 5R, PNC price list \$500.00	\$110.00
181	3477	34c Liberty S/A, #2222 & 3333, F/VF	\$6.50	217	1901a	5.9c Bicycle P/C, PS-12, #4, XF/S, line VF/XF, gap 5R, PNC price list \$500.00	\$110.00
182		(2), #4444 & 5555, VF	\$6.50	218	1903a	9.3c Mail W. P/C, (2), PS-11, #3&4, XF/S, lines XF, gap 5L	\$140.00
183	3481a	34c Lilies, (2), #B2111 & B2122, VF	\$7.50	219		PS-6, #5, XF, line S, no gap	\$2.00
184		(2), #B2211 & B2222, XF	\$7.50	220		PS-10, #5, VF/XF, line XF, gap 3-1/2L, PNC price list \$1000	\$400.00
185	3550	[34c] UWS S/A, (2), #2222 & 3333, VF	\$7.00	221		PS-7, #8, XF/S, line VF/XF, gap 2L	\$125.00
186	(2)	#3550, [34c] UWS S/A, #1111, #3550A, [34c] UWS S/A w/spaces, #1111, VF/XF	\$7.00	222	1904a;	10.9c Hansom P/C, (2), PS-6, #1&2, XF, lines S, gaps 1R	\$60.00
187	3632	37c Flag, (2), #4444 & 5555, F/VF	\$6.50	223	1906a	17c Auto P/C, PS-11, #3A, XF/S, line XF/S, gap 5L	\$7.00
188	3632A	37c Waving Flag S/A, #S4444, XF, with rare smooth tagging	\$25.00	224		PS-8, #5A, F/VF, line VVF/XF, gap 2L	\$12.00
189	3633A	37c Waving Flag S/A, #B1111, VF/XF	\$5.50	225		PS-7, #3C, VF/XF, line F/VF, gap 1R, type I paper	\$8.00
190	3641a	37c Steel Toys, #B1111, VF	\$7.00	226		PS-8, #4C, S, line S, line gap	\$10.00
191		#B12222, VF	\$5.00	227		(2), PS-10, #5C & 7C, XF, lines XF, gap 5L	\$125.00
192	3683a	37c Snowmen, liner less, #G1111, F/VF	\$7.00	228		PS-10, #6A-B, XF/S, line S, gap 4R	\$39.00
193		#G1112, XF	\$7.50	229	1908	20c Pumper, PS-9, #11, F/VF, perfs just clear @R, line F does not touch perfs	\$17.00
194	3769	[10c] Lion WAG, #S1111, XF, w/top pink B#0210 on position 4	\$2.00	230	2123a	3.4c Bus P/C, PS-8, #2, F/VF, line S, gap 2R, missing period on 3R	\$12.00
195	3770	[10c] Atlas S/A w/spaces, #V12111, VF/XF	\$40.00				
196	3970	[39c] Liberty & Flag, (2), #P1111 & P2222, VF	\$8.00				
197	3981	39c Liberty & Flag, #P1111, XF	\$6.00				
198	4878a	[49c] Forever Ferns w/spaces, #C1111, XF	\$6.00				
199	O139	[22c] D Official, #1, XF, three short perfs @L, tagging shift 7mmL & 4mm down	\$12.00				
200	CVP31	29c Shield & Bunting, #1, VF, old font dull gum solid tagging	\$4.25				
201	CPV31a	1c Shield & Bunting, S-5 No #, XF/S, old font shiny gum	\$1.00				
202		19c #1, XF, old font shiny gum	\$5.50				

Lot	Scott#	Description	Min. Bid	Lot	Scott#	Description	Min. Bid
231		PS-8, #2, VF, line VF, gap 2R, missing period on 3R	\$15.00	255		PS-7, #78777A, XF/S, 10 x 10, pv/vp	\$19.00
232		(2), PS-9, #1&2, VF/XF, lines VF/XF, gap 2R	\$18.00	256	(3)	#2915A & 2915C, #66666, 11 x 10, pp/vv, #66666, 11 x 12, vv/pp, #66666 121 x 12, vp/pv, all XF	\$30.00
233	2124a	4.9c Buckboard P/C, PS-7, #1, VF, line VF, gap, from row 4 of web has double break in both top & bottom lines	\$8.00	257	2915B	32c FOP S/A w/spaces, PS-7, #S11111, XF/S, w/ pink double B# 07410 on position 1, 6-1/2 mm and 11-1/2 mm from bottom on backing paper	\$10.00
234		PS-9, #2, XF, line VF/XF, gap 2R, from row 2 of web has double break in top line only	\$8.00	258		PS-7, #S11111, XF/S, w/ pink double B# 07370 on position 2, 6-1/2 and 11-1/2 mm from bottom edge of backing paper	\$10.00
235		PS-6, #5, VF/XF, line VF/XF, line gap, from row 4 of web has double break in both top and bottom lines	\$8.00	259	305	32c Yellow Rose, PS-7, #8888, VF	\$5.00
236		PS-8, #6, XF, line VF, gap 1R, from row 1 of web has double break in both top and bottom lines	\$8.00	260	3305a	33c Berries, PS-9, #B2222, XF/S	\$8.50
237		PS-9, #6, VF/XF, line XF, gap 2R from row 2 of web has double break in top line only	\$8.00	261	3481a	34c Lilies, PS-9, #B1111, XF/S	\$6.00
238		PS-7, #6, VF, line VF, gap 2R, from row 3 of web has double break in bottom line only	\$8.00	262	3617; 23c	Washington, (2), PS-7, #45, pv/vp, #45, vp/pv, VF	\$4.50
239	2124a	4.9c Buckboard P/C, PS-8, #6, VF/XF, line S, gap 2R, from row 4 of web has double break in both lines	\$8.00	263		(2), PS-7, #46, pv/vp #46 vp/pv, VF	\$4.50
240	2129a	8.5c Tow Truck P/C, PS-10, VF, gap 6L, this can be seen as red overprint does not line up, see 1995 Nazar book for more details	\$13.00	264	3683a	37c Snowmen, liner less, PS-9, #G1111, F/VF	\$8.00
241	2228a	4c Stage, PS-7, #1, VF/S	\$3.00	265		PS-8, #G1111, VF/XF	\$6.00
242	2252a	3c Conestoga, PS-7, #5, XF, shiny gum	\$6.00	266		PS-9, #G1112, XF	\$10.00
243		PS-7, #5, XF, low gloss gum, small plate #	\$6.00	267	4007a; 39c	American Crops, PS-10, #S1111, VF	\$4.50
244	2257c	10c Canal Boat, PS-7, #4, XF/S, shiny gum	\$3.00	268	4175a; 41c	Blooms, PS-11, #P1111, XF/S	\$12.00
245	2602	[10c] E&S, PS-9, #A12213, VF bit low	\$5.00	269	4590a; [25c]	Spectrum Eagle, PS-6, #V11111, VF, w/black middle b# 04300 on position 6	\$4.50
246		(4), PS-7, #A88888, A89999, A99998, A99999, XF	\$6.00	270	CPC31	Variable Rate Shield, (18) PS-7, #1, each strip has values from 1c-18c all XF, old font, dull gum, smooth tagging	\$75.00
247	2890	[32c] Blue G Flag, PS-7, #A1313, XF/S	\$3.50	F. IMPERF STRIPS			
248	2914	32c FOP WAG, PS-7, #S11111, XF/S, w/black Double b#06590 at top & bottom on position 3	\$15.00	271	1520B	10c Jefferson Memorial, S-5, VF/XF	\$5.00
249	2915A	32c FOP S/A, PS-7, #88898, 10 x 10, pv/vp, VF	\$25.00	272	2133b	12.5c Pushcart, PS-6, #1, VF/XF	\$115.00
250		PS-7, #88898, VF/XF, 10 x 10, pv/vp	\$75.00	273	2136a	25c Bread W., S-2, NO#, XF	\$8.00
251		PS-7, #89899, F/VE, 10 x 10, pv/vp	\$200.00	274		PS-5, #2, VF vert, also mis-cut w/ 10% of wording at bottom of strip	\$60.00
252		PS-7, #99899, VF, 11 x 10, pp/vv	\$75.00	275		PS-5, #2, VF/XF	\$70.00
253		(3), PS-7, #89888, 89898, 97898, F/VE; all 11 x 10, pp/vv	\$27.00	276	2265a	21c R. R. Mail Car, PS-6, #1, XF/S	\$185.00
254		PS-7, #13211A, XF, 10 x 10, pv/vp	\$49.00	277	2281g	25c Bee, S-2, NO#, XF/S, 2016 SCV \$45.00	\$30.00
				278	2602	[10c] E&S, S-2, NO#, VF, imperf at top has 3-1/2-2-1/2 perfs at bottom	\$15.00
				279	2607c	23c USA, PS-6, #1111, S	\$55.00
				280*	2609a	29c Whitehouse, PS-6, #3, XF, not listed in PNC price sheet	\$300.00
				281		PS-6, #4, XF, not listed in PNC price sheet	\$300.00

Lot	Scott#	Description	Min. Bid	Lot	Scott#	Description	Min. Bid
282		PS-6, #7, XF, PNC price list \$400.00	\$300.00	301	1906a	17c Auto P/C, PS-10, #6A, F/VF	
283	3054a	32c Yellow Rose, S-2, NO#, also mis-cut has 10# of leaves and full dater @top	\$13.00			vert, line F/VF, gap 4R, # 95% top with no trace at bottom, unlisted	\$100.00
284	3281a	33c FOC, S-6, NO#, VF bit low, has diagonal crease in backing paper	\$12.00	302		PS-11, #3A-B, XF vert, line VF, gap 5R, # 100% top	\$90.00
285*	4868a	[49c] Fireworks over Flag, NO#, Vert strip of 3 un-slit between rows, XF, 2016 SCV \$60.00	\$25.00	303		PS-5, #5B-A, VF vert, line XF, line gap, # split 5% top 95% bottom	\$19.00
G. MISPERF STRIPS				304		PS-11, #5B-A, XF vert, line S, gap 5R, # 100% top	\$25.00
286	1904a	10.9c Hansom P/C, (2), PS-10, #1&2, VF horiz. Lines N/A, gap 4R, perfs thru 9 of 1890, shift 4mm to left	\$20.00	305	2115b	22c Flag, PS-5, #8, VF/XF vert, from "D" press block tag 19 x 22-1/2mm # 50% bottom no trace at top from row 1 of web	\$40.00
287	1908	20c Pumper, PS-5, #2, XF/S Horiz. Line N/A, perfs thru e of Pumper	\$95.00	306	2125	5.5c Star Truck, PS-5, #1, VF vert, # 100% top	\$11.00
288	2130a	10.1c Oil W. S-3, NO#, perfs thru right 1/2 of W in Wagon, XF Horiz.	\$2.00	307	2128a	8.3c Ambulance P/C, PS-3, #1, XF vert, gap 1-7/8L, missing period 2L, just trace of # at bottom nothing at top from row 1 of web	\$3.00
289	2602	[10c] E&S, PS-9, #A43335, F/VF Horiz. Perfs between U/S of USA, some perfs lightly bent	\$35.00	308	2131	11c Stutz, PS-5, #2, VF vert, line VF, # split 50/50	\$2.50
290	2890	[32c] Blue G Flag, PS-6, #A1112, XF Horiz, perfs thru "r" of address	\$14.00	309	2134	14c Ice Boat, PS-5, #1, VF/XF vert, line VF/XF, # 100% top	\$6.00
291	2915A	32c FOP S/A, PS-3, #13311A, VF Horiz, die cut shift 5mm to right	\$5.00	310		PS-5, #2, VF/ vert, line VF, # 100% top	\$6.00
H. MISCUT STRIPS				311		PS-5, #2, F/VF vert, line F/VF, split # 98% top 2% bottom	\$5.00
292	1897A	2c Locomotive, PS-3, #1, VF vert, line VF/XF, # 100% on top	\$12.00	312	2280	25c Yosemite, PS-5, #1, VF/XF vert, block tagged, split # 40% top 60% bottom	\$4.00
293	1900	5.2c Sleigh, PS-5, #3, F/VF vert close @L, line XF, # 15% top 85% bot.	\$10.00	313		PS-5, #1, F/VF vert, 5% of blue star field at bottom foot of # not printed	\$4.00
294	1901a	5.9c Bicycle P/C, PS-6, #4, F/VF vert, line F/VF, # 100% top, trace of second # at bottom	\$5.00	I. CONSTANT PLATE AND MAT VARIETIES			
295	1902a	7.4c Buggy, PS-5, #2, F/VF Vert close @R, type II paper, # 95% top no trace at bottom no listing found for this one	\$25.00	314	1898Ab	4c Stage P/C, PS-5, #6, XF, line XF, gap 1L, missing period 2L	\$4.00
296	1906	17c Auto, PS-5, #3, VF vert, line XF, # 100% top	\$10.00	315	1904	10.9c Hansom, PS-3, #2, VF, line XF/S, dropped transfer 2L	\$12.00
297		PS-6, #3, F/VF vert, line F/VF, # 100% top	\$10.00	316	1906;	17c Auto, PS-3, #5, VF/XF, line XF/S, reclining comma 1R	\$4.00
298		PS-5, #4, F/VF vert, line F/VF; # 100% top	\$10.00	317		PS-5, #7, F/VF bit low, line VF, oil drop 1R	\$22.00
299		PS-6, #4, F/VF vert, line F/VF, # 100% top	\$10.00	318		PS-7, #7, VF bit low, line XF, oil drop 1R	\$30.00
300		PS-5, #5, F vert just clears @R, line F does not touch perfs, # 100% top	\$6.00	319		PS-7, #7, VF, line XF/S, oil drop 1R	\$30.00

**Fees charged for auction bids
directly benefit PNC³
and help keep dues low.**

Lot	Scott#	Description	Min. Bid	Lot	Scott#	Description	Min. Bid
320	1906a	17c Auto P/C, (2), PS-10, #3B-A & 4B-A, F, perfs just touch bumper @R, line F does not touch perfs, gaps 4-1/4R, white dot inside "D" of presorted @1R	\$45.00	338	2005	20c Consumer, PS-5, #2, F low, foot of 2 missing, line XF, from top row of web top 5mm of strip untagged	\$4.00
321	1908	20c Pumper, PS-5, #5, F/VF low # just clears, line F/VF, chiller roller doubling of letters on 2&3L, perf faults	\$6.50	339	2112c	[22c] D Eagle, PS-5, #1, VF. Untagged error, small dark spot next to one perf 2nd from bottom 1R	\$95.00
322	2124	4.9c Buckboard, PS-5, #4, F/VF close @L, line F/VF, long buggy whip	\$5.00	340	2115b; 22c	Flag, PS-5, #2, XF/S, wide & tall block tagging 19-1/2 x 23	\$20.00
323	2128a	8.3c Ambulance P/C, PS-6, #1, F/VF, line VF, gap 1R, low entry #, also missing period 2R	\$14.00	341		PS-5, #20, XF/S, wide & tall block tagging 19-1/2 x 23	\$40.00
324		PS-5, #1, F/VF low & right, line VF, gap 1-7/8L, missing period 2L	\$8.00	342	2225a	1c Omni, PS-7, #3, XF, light tagging error, shiny gum	\$27.00
325		PS-5, #1, F/VF bit low, line F/VF, gap 1-7/8L, missing period 2L	\$8.00	343	2257d	10c Canal Boat, PS-7, #4, XF, untagged error, shiny gum	\$90.00
326	2130	10.1c Oil Wagon, PS-5, #1, XF, flying hyphen 1R	\$10.00	344	2529b	19c Fishing Boat, PS-5, #5555, XF/S, untagged	\$3.00
327	2131	11c Stutz, PS-5, #3, XF, line XF, dropped transfer 2L	\$14.00	345	2607a	23c USA, PS-5, #1111, VF/XF, tagged error	\$50.00
328	2260	15c Tug, PS-5, S, broken #1 @1R	\$16.00	346	2903a	[5c] Mountains; PS-5, #11111, XF, tagged error	\$13.00
329		PS-7, #1, S, broken #1 @1R	\$18.00	347		SAME	\$16.00
330	2280	25c Yosemite, S-4, NO#, F/VF, burning trees position 1, camp fire on position 3	\$4.00	348	3271b	[10c] E&S w/spaces, PS-5, #11111, square die cut, XF, tagged error	\$5.00
331	2458	10c Semi, PS-5, #22, XF, period after plate #	\$45.00	349;	3615a; 3c	Star, PS-5, #S111, S, tagged error, pink bottom B# 01300 on position 5	\$6.00
332	2602	[10c] E&S, (7), complete set of broken yellow 1's, XF/S includes A12213	\$70.00	K. # ON # MINT STRIPS			
333	2609	39c Whitehouse, PS-5, #18, VF/XF, red eagle on flag pole	\$10.00	350	2912	[25c] Juke Box, PS-5, S22222, XF, pink top B# 04200	\$5.00
334	2915A	32c FOP S/A, PS-5, #87888, XF, 11 x 10, pp/vv, red dot next to date on plate # stamp	\$12.00	351	2912B;	[25c] Juke Box w/spaces, PS-5, #222222, XF, aqua bottom B# 9520	\$7.00
J. TAGGING ERRORS AND VARIETIES				352	2914	32c FOP Wag, PS-5, #S11111, S, top black B# 03940	\$7.00
335	1897	1c Omni, PS-3, #2, XF/S, line S, untagged freak along top of strip goes from 0mm-11-1/2mm starting about 4mm in from right perfs	\$1.00	353		PS-5, #S11111, S, top black B# 07710	\$7.00
336	1898A	4c Stage, (2), PS-7, #3&4, VF, lines XF, have prairie fire tagging	\$23.00	354		PS-7, #S11111, VF/XF, top purple B# 06020	\$7.00
337	1906	17c Auto, PS-5, #4, VF, line XF, tagging bar break 3L	\$2.00	355*	3915B;	32c FOP S/A w/spaces, PS-5, #S11111, VF/XF, double pink B# 09750 6-1/2 & 11-1/2 mm from bottom of backing paper	\$45.00
				356	2915D	32c FOP S/A w/spaces, PS-7, #11111, VF/XF, aqua bottom B# 2700 10 x 10, pv/vp	\$12.00
				357	3266	[33c] H Hat, PS-5 S/A w/spaces, PS-5, #1111, XF, aqua bottom B# 0280	\$7.00
				358	3271	[10c] E&S S/A w/spaces, PS-5, #11111, VF, aqua top B# 4780	\$5.50

Lot	Scott#	Description	Min. Bid	Lot	Scott#	Description	Min. Bid
359	3282	33c FOC S/A w/spaces, PS-7, #1111, XF, aqua top B# 1640	\$10.00	379	4132	[41c] Flag, PS-20 folded in half #P1111, VF/XF, with white line @14R and brown ghost at P1 over P1	\$13.00
360	3447;	[10c] Lion S/A w/spaces, PS-5, #S11111, XF, pink top B# 02630	\$5.00	380	4134	[41c] Flag, (3), PS-1, #V1111, VF/XF, (1) normal, (1) bell top, (1) knoll top	\$2.50
361	3769	[10c] Lion WAG, PS-5, #S11111, S, pink top B# 0070	\$4.00	381		S-1, NO#, XF, mis-perfed w/flag pole on right and color shift with red 3-1/2mm to right and down 1mm leaving white space to right and bottom of star field	\$20.00
362	3785	[5c] Seacoast S/A w/spaces, PS-5, #P1111, S, die cut four sides inverted bottom aqua B# 8220	\$5.00	382	CVP31b 23c	Variable Rate, PS-3, #1, XF, all values shifted up 12mm to the middle of blue shield	\$25.00
363		PS-5, #P2222, XF/S, shows color shift of black plate with date & black plate number up touching the blue field, aqua bottom B# 1220	\$4.00	M. FIRST DAY COVERS			
364	3864	[5c] Seacoast WAG, PS-5, #S1111, S pink top B# 2858, the last number is mis-formed so it looks like an 8 but should be 0	\$4.00	383	1899	5c Motorcycle, (2), #1&2 with four stamps on each Blue #6 unaddressed cover with over-all motorcycle cachet tied by blue hand cancel of Oct 10 PM 1983 from Pope Valley CA 94567 an unofficial FD city, VF	\$9.00
365		PS-5, #S1111, VF/S, pink bottom B# 0210	\$5.00	384	1906	17c Auto, PS-4, #1, tied to Art Craft cachet unaddressed FDC, XF	\$5.00
366	4131	[41c] Flag, PS-5, #S1111, VF, pink bottom B# 1150	\$5.00	385		SAME but plate #2	\$5.00
L. OTHER VARIETIES				386	1907	17c Surrey, PS-4, #1, tied to Art Craft cachet unaddressed FDC, XF	\$3.00
367	2280	25c Yosemite, S-4, NO#, F/VF, blue on first red strip below stars	\$2.00	387		SAME but plate #2	\$3.00
368	2466b	32c Ferryboat, PS-5, #5, F/VF bit high, Bronx blue, also called bright blue in Scott's, color error	\$75.00	388	2468	\$1.00 Seaplane, PS3, #1, XF, tied to Art Craft cachet unaddressed FDC	\$3.00
369	2523c	29c Rushmore, PS-7, #7, XF, Toledo Brown color error	\$34.00	389	3612	5c Toeware, PS-2, #S1111111, plus NO# single #3208, tied to plain white unaddressed #6 cover by official FDC, VF	\$4.00
370		PS-8, VF, Toledo Brown color error	\$50.00	390	4002	24c Buckeye, PS-2, #V1111, tied to Fleetwood cachet unaddressed FDC, v/p plate # is on top stamp in pair, XF	\$4.00
371	2890	[32c] Blue G Flag, PS-5, #A4427, XF/S, grey color shift up 1/2 mm the flag does not touch the pole	\$3.50	391	4672a	1c Bobcat, PS-1, #P111, plus 2 more singles NO #'s and single NO# 46c Star tied to an unaddressed CL Cachets FDC, VF/XF	\$12.00
372	32871v	[10c] E&S S/A w/spaces, PS-5, #11111, XF, Anaconda Brown color error	\$2.00	392	O135	20c Official, PS-2, #1, tied to unaddressed Artmaster cachet FDC, XF	\$5.00
373	3769	[10c] Lion WAG, PS-5, #S11111, F/VF, has super hole in row of perfs to right of plate # six perfs from bottom	\$10.00	N. OTHER COVERS			
374	3829;	37c Egret S/A, PS-5, #V3222, VF, Bell top left	\$8.00	393	1900a	5.2c Sleigh, PS-1, #3, F/VF, line VF, on #10 white cover from National Jewish Coalation, overall VF	\$30.00
375		PS-5, #V3212, F/VF bit high, Bell bottom right	\$5.50				
376		PS-5, #V3222, VF/XF, Knoll top left	\$8.00				
377	3983	39c Liberty S/A, PS-7, #V1111, VF, short bell bottom left	\$3.00				
378		SAME	\$3.00				

Lot	Scott#	Description	Min. Bid	Lot	Scott#	Description	Min. Bid
394	1903a	9.3c Mail W, PS-2 #5, plus #1904a, PS-2 #2 and single NO# #1900 and single NO# 2123a, on white #10 cover from Rainard Beer with black hand cancel out of Cleveland OH 15352 dated Feb 18, 2016, XF, unopened	\$3.50	406	2266	24.1c Tandem Bike, PS-1, #1, on #8, white window cover from Visa Gold w/ red auxiliary mark on front and back, overall XF	\$17.00
395	1903a	9.3c Mail W. P/C, PS-1 #6, on #10 white window cover from Cohan & Company in Cleveland OH, overall VF, stamp has S/E @R from affixing machine	\$30.00	407	24653	20c Cog Railway, PS-5, #1, plus pair NO# tied to #7 white cover addressed to Germany from Tempe AZ BHC, overall VF	\$2.00
396	1904a	10.9c Hansom P/C, PS-1, #2, has S/E @L from affixing machine, on #10 white window cover from are they out to get the president group in Washington DC, VF	\$30.00	408	2523d	29c Rushmore, PS-1, #2, on Lenz Paper, tied to #9 white window cover by Seattle WA BMC 10/19/91, overall VF, SCV for used single \$250.00	\$70.00
397	1906	17c Auto PS-1 #2, plus #1899 NO# tied to #6 yellowish cover by 1/23/81 BMC this is a philatelic use mailed to Ken Lawrence? Overall XF	\$9.00	409	2606	23c USA, PS-1, #A2232 on 4-11/16 x 9 white window cover from Master Card, S	\$12.00
398	1907	18c Surrey, PS-1, #3, VF, tied to white #6 cover by PMC from Denver 6/24/81 stamp has 2-3 short perfs @L overall VF	\$33.00	410		SAME but plate #A2233	\$12.00
399	1908	20c Pumper, PS-1, #2, VF, tied to white #6 c over by BMC 2/4/82, stamp has perf faults, overall VF	\$15.00	411		PS-1, #A4364 on #10 white cover from Capital Cash, w/ red auxiliary pointing hand, overall XF	\$17.00
400		PS-3, #14. XF, tied to #10 white cover by BMC2/17/? From SW Inc. XF	\$12.00	412		PS-1, #A4443, on white #10 cover from Capi-tal Cash w/ red auxiliary pointing hand, overall XF	\$22.00
401	2115; 22c	Flag, PS-1, #6, tied to white #10 cover by 12/22/87 BMC from Houston	\$12.00	413		PS-1, #A4444, on white #10 cover from Capital Cash w/ red auxiliary pointing hand, overall V	\$12.00
402	2115b	22c Flag, PS-1, #20, from D press tied to #10 white YMCA cover by 8/21/87 BMC tag block 19 x 23 perf s cut on both side overall F/VF	\$5.00	414	3228	[10c] Bike, PS-1, #444, on #10 white window cover from Mealey's Furniture square shoulder die cut cover has tear upper left away from stamp, overall VF	\$32.00
403	2150a	21.1c Letter, PS-1, #111121 on #9 white window cover from First Deposit National Bank w/ red auxiliary pointing hand, stamp has S/E @R, cover F/VF	\$120.00	415	1897	S-1, NO # plus Walmart FOP Dummy stamp from stamp dispenser sold in stores tied to white #6 cover by 5/16/2000 BMC, illegal use of this dummy stamp which has perf faults which is normal, overall VF	\$9.00
404	2262a	17.5c Race Car, PS-1, #1, on #9 white window cover from First Deposit National Bank w/ red auxiliary pointing hand short perfs @L, overall F/VF	\$15.00	O. USED SINGLES			
405	2264a	20.5c Fire Engine, PS-1, #1, tied t #10 white window cover by 4/21/90 BMC w/ black auxiliary pointing hand, overall VF	\$20.00	416	1895b	20c Flag P/C, #14, XF	\$22.00
				417	1901a	5.9c Bicycle, #3, shows line gap, full perfs, F/VF bit low	\$4.50
				418*		#5, XF, shows line gap, jumbo perfs both sides	\$40.00
				419		#6, XF, shows line gap, line VF/XF	\$15.00
				420	1904a	10.9c Hansom P/C, #1, VF, line F/VF, gap 1/2L S/E @L from affixing machine.	\$3.00
				421		#2, VF, full perfs @R, short perfs @L but there	\$4.00
				422		#3, XF/S, line XF, shows line gap	\$30.00
				423	2115	22c Flag, #14	\$10.00

Lot	Scott#	Description	Min. Bid	Lot	Scott#	Description	Min. Bid
424	2115a	22c Flag, #20, F/VF, tagging block 16-1/2 x 22mm	\$1.25	452	1899	5c Motorcycle, (2), #2&4, VF, lines VF, light BHC,s of Nov 24, 1998	\$1.00
425	2115b	22c Flag, #8, F/VF, full perms tagging block 19 x 23 wide & tall	\$5.00	453	1908	20c Pumper, (2), #9&10, VF/XF lines VF/XF, have Jan 19, 1998 BHC's	\$2.00
426		#18, XF, full perms, wide and tall tagging block 19 x 23	\$10.00	454		#16, F/VF close @R, line F does not touch perms, light red HC of 19+4	\$4.00
427	2523c	29c Rushmore, #7, Toledo Brown error, VF, perf faults both sides	\$45.00	455	2468l	\$1.00 Seaplane, #1, F/VF vert # split 95% bottom 5\$ top, light red hand cancel from 1994	\$5.00
428	2915A	32c FOP S/A, #89899, 10 x 10, pv/vp, F/VF	\$90.00	R. OTHER ITEMS			
429*		#13231A, F/VF 10 x 10 vp/pv rare die cut	\$200.00	456	584	3c Lincoln, F/VF, VLH, perf 10	\$19.00
430		#77777A, VF, 10 x 10, vp/pv on piece	\$10.00	457	1615C	8.4c Piano P/C, S-4, F/VF, dull gum, MNH, plain black bar bureau P/C	\$2.00
431		#77777A, XF, 10 x 10 vp/pv	\$10.00	458*	1616b	9c Americana P/C, S-6 line strip, F/VF, line F/VF, presorted first class between black bars on each stamp, scarce narrow spacing/ line gap, MNH	\$300.00
432	(21)	#2915A & 2915C, all diff #'s on piece, VF	\$18.00	459	2194c	\$1.00 John Hopkins, top half of sheet, 10 stamps, includes 2 upper plate blocks plate #1 L & R, F/VF untagged error, MNH	\$50.00
433	3208A	[25c] Diner, #11111, round shoulder die cuts, XF	\$5.50	460	TD-30	MNH pair of coil test stamps, VF, cream color, 2016 SCV \$40.00	\$5.50
434		#22211, XF/S, round shoulder die cuts	\$19.00	461	TD-95	MNH coil line strip of 4 test stamps purple & cream, F/VF close @R and low, 2016 SCV \$60.00	\$18.00
435	3228	[10c] Bike, #444, XF/S, rare square shoulder die cuts	\$75.00	462	TD-119	MNH coil test strip of 4 w/ eagle & flag in grey, NO #, XF/S	\$2.00
436*	3632A	37c Flag, #S4444, VF/XF, solid tagging, PV with cobra top	\$20.00	463	3363d	33c Deer Christmas Booklet of 20 stamps, unfolded, missing all die cuts rare item centering S	\$380.00
437	3770	[10c] Atlas, #V12111, XF	\$65.00	464	3534	34c Porky Pig sheet of 10, cut from bottom right of press sheet, XF	\$4.50
438*		#V13222, S	\$145.00	465		100 diff. used Germany old to modern, VF/XF	\$8.00
439	3785b	[5c] Seacoast die cut 4 sides, #P2222, XF, tagged error	\$25.00	466		75 all diff used New Zealand old to modern, VF/XF	\$5.00
440		SAME	\$30.00	S. CLUB DONATIONS			
441	3801a	[25c] Eagle, #S3333333, VF, lightly tagged error	\$4.00	467	2112	[22c] D Eagle, PS-3, #2, VF/XF, tagging shift up & right	\$0.50
442	3829	37c Egret, #V3211, vp/pv, S	\$250.00	468	(70) diff PS-3, (3) S/A, (4) WAG, VF/XF, 5c/25c face is \$1.50	\$1.00	
443	(107)	all different #2225/2914, F/S	\$12.00	469	1908	20c Pumper, PS-5, #5, VF/XF, line VF	\$1.00
444		SAME but only 106 different	\$12.00	470	1903	9.3c Mail W. PS-3, #1, on Artmaster cachet FDC, VF, # on left stamp	\$0.25
445		155 all different mostly flags, F/XF	\$13.00	471	3633A	37c Flag, PS-1, #B111, tied to white #9 cover by Royal Oak, MI Cat in The Hat Slogan cancel dated Dec 10, 2003, VF	\$0.50
P. USED PAIRS							
446	1891	18c Flag, #6, VF/XF, very light black roller cancel # on L stamp	\$250.00				
447		#6, F/VF, black roller cancel, # on right stamp of pair	\$290.00				
448	1898A	4c Stage, NO # untagged error, F/VF	\$1.00				
449	1906	17c Auto, #6, XF, line XF, light 1988 BHC	\$5.00				
Q. USED PS-4 OR LONGER							
450	1891	18c Flag, PS-5, #1, XF, black roller cancel	\$4.00				
451*		PS-7, #6, XF, on piece, light black roller cancel # on 3rd stamp from left	\$500.00				

Lot	Scott#	Description	Min. Bid	Lot	Scott#	Description	Min. Bid
472	3682	37c Linerless Snowman, PS-1, #G1111, plug 3617, 23c Washington NO# tied to a handpainted and numbered 414/415 snowman holiday #10 white cover from Ace Newsletter out of Rochester, NY, XF	\$1.00	475	4491	[49c] Forever Flag, PS-1, #V11111, tied to #10 white window cover by Sacramento, CA 29/Oct/2011 black spray on cancel, from Bill Rita Management	\$0.50
473	3982	39c Liberty, PS-1, #S1111, tied to white #10 cover by Cleveland OH 441 13/Feb/ 2007 Black spray on cancel, from St Margaret Mary Parish, VF	\$0.50	476	4495	[5c] Art Deco Bird, PS-1, #P3333, on unopened white #10 window cover from National Trust, overall VF	\$0.50
474	4487	[49c] Forever Flag, PS-1, #P11111, tied to white #10 cover by Santa Ana, CA 24/Oct/2011 Black spray on Cancel, from Annette Changala Inc. overall VF	\$0.50	477	2518	[29c] F Tulip, PS-5 used strip #1111, VF	\$0.50
				478	(6)	Coil Roll End labels from #1897A, 2c, #2128, 8.3c, 2130, 10.1c, 2132, 12c 2255, 7.6c, 2263, 20c, all rolls of 500 stamps, VF	\$1.00
				479	1908	20c Pumper coil roll end from roll of 3000, VF	\$1.00

Coil Line Procedures and Deadlines

Deadline

Deadline for the receipt of articles, letters, advertising and news is the first of the month preceding the month of publication. For example, we need everything for the November issue by October 1, everything for the December issue by November 1, everything for the January issue by December 1 and so on.

The preferred method of receiving copy is via an email attachment. Please send as an MS Word document. We also welcome compact discs (CDs). Hard copy is acceptable but must be rekeyed so electronic submission is preferred.

All submissions are subject to editing for length, clarity and content. Every effort is made to retain the facts without changing the meaning or thrust of the article.

Illustrations

The most effective way to transmit illustrations is electronically. They should be TIFF or JPEG, preferably scanned at 300 dpi but no less than 150 dpi. They can be sent on CD and we can retrieve copy and illustrations from electronic copy if provided the correct routing. Do not embed illustrations in a Microsoft Word document, but attach separately to an email. Word sets parameters not recognized by Adobe Photoshop, my photo program, and I am unable to produce the best quality illustrations from Word.

Questions can be directed to editor Vickie Canfield Peters by emailing vcanfieldp@gmail.com or by writing to her at 11911 E. Connor Road, Valleyford WA 99036. The telephone number is 509-991-5376.

Your attention to, and compliance with, these procedures and deadlines assures the best quality we can achieve. Thank you for your support of, and contributions to, **Coil Line**.

**Want to read about it?
Then write about it!**
Coil Line is YOUR journal.
Send an article to the editor today.

More Auction #55 Images



Lot # 280



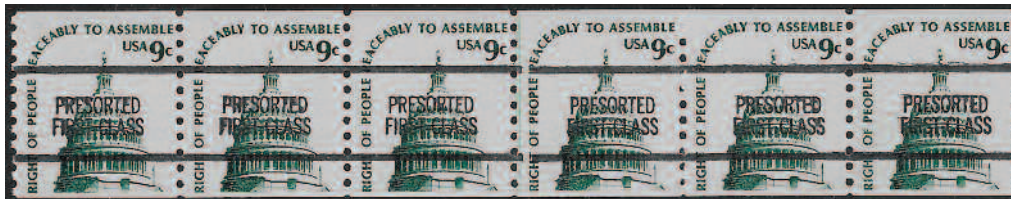
Lot # 355



Lot # 285



Lot # 451



Lot # 458



Lot # 381



Lot # 20



Lot # 442

Bids for Auction #55 are due by Saturday, October 29

PNC³ Auction #55 Official Bid Sheet

Terms & Codes Used

1. Numbers in () indicate total number of items in lot; [] number of items within a subset of the lot.
2. All lots are listed with a minimum starting bid and bids must conform!
3. For precancel strips: If has gap, it's listed; no listing=NO GAP!
4. In case of a tie bid, the earliest postmark or email date wins.
5. All winning bids will be at one bidding increment over the second high bidder.
6. I will not accept phone bids; bids must be only via mail and email! (Please submit Bid Sheet on wrapper for mail use.)
7. R = right, L = left, HVY = heavy, Lt = light, BMC = black machine cancel, PMC = purple machine cancel, FDC = 1st day cover or cancel, S# = plain strip, sh. = shoulder, RHC = red hand cancel, BHC = black hand cancel, @ = at, btm = bottom, cvr = cover, [cvr] = with window, rtn = return, Rec'd = Received, SCV = Scott Catalog Value, VAL = PNC3 Values List.

8. ALL Bids must be in the auction director's hands by the closing date **Saturday, October 29, 2016** and not just post-marked by then!

9. Bids not conforming to the bidding increments will be lowered according to the proper increment.

10. "Buy Bids" will be accepted, but realize that only one Buy Bid can be honored and that is the first one, and at only one advance over second high bidder.

11. IF you add a "+" (plus sign) to your Bid, I will use it to break a tie only if needed.

12. Please, when placing a bid over the Internet, DO NOT use a spreadsheet or other such program as I have problems opening them. Just place it in standard email form. Once placed, please do not mail a confirming copy. The email address to send your bids to is PNC3auctions@aol.com. **No phone bids please!**

13. If you need to call me with questions on a lot but NOT to place a bid, please call after 9 a.m. Chicago time (773) 622-0663.

BIDDING INCREMENTS:

Bids	\$.25 - to - 4.75	\$.25
	5.00 - to - 9.50	.50
	10.00 - to - 49.00	1.00
	50.00 - to - 97.50	2.50
	100.00 - to - 495.00	5.00
	500.00 +	10.00

**Bids must be IN THE HANDS
of the auctioneer by
Saturday, October 29, 2016**

NAME _____ PNC³ # _____

Home Address _____ Home Phone () _____

City _____ State _____ Zip _____

Email Address _____

Signature _____ (ALL SHEETS MUST BE SIGNED)

Please enter the following bids for me in this mail auction:

LOT #	BID	LOT #	BID	LOT #	BID	LOT #	BID	LOT #	BID	LOT #	BID
_____	_____	_____	_____	_____	_____	_____	_____	_____	_____	_____	_____
_____	_____	_____	_____	_____	_____	_____	_____	_____	_____	_____	_____
_____	_____	_____	_____	_____	_____	_____	_____	_____	_____	_____	_____
_____	_____	_____	_____	_____	_____	_____	_____	_____	_____	_____	_____
_____	_____	_____	_____	_____	_____	_____	_____	_____	_____	_____	_____

PLEASE CHECK YOUR BIDS CAREFULLY!

Please limit my purchase to \$_____. (Note! Limits under \$50.00 are respectfully declined. Bid limits will be executed in the order [vertically] that you bid the lots.)

Send complete SIGNED bid sheets to:
Joe Sedivy, PNC3 Auctioneer, P O Box 410602, Chicago IL 60641
 Email: PNC3auctions@aol.com