

ONLY DUES NOTICE!

2006 PNC³ MEMBERSHIP RENEWAL FORM

PNC³ Number: _____

Name (Print): _____

Address (Print): _____ Check if new address

City (Print): _____ State: _____

Country (Print): _____ Zip/Postal Code: _____

New Phone # (_____) _____ New e-mail: _____

	On or Before <u>12/31/2005</u>	On or After <u>01/01/2006</u>
USA - Bulk Mailing of Coil Line	___ \$12.00	___ \$14.00
USA - First Class Mailing of Coil Line	___ \$17.00	___ \$19.00
Canada and Mexico	___ \$17.00	___ \$19.00
All Other Countries	___ \$22.00	___ \$24.00
Life Members – First Class Mailing	___ \$5.00	___ \$5.00
Junior Members, Date of 18 th Birthday _____	___ \$5.00	___ \$5.00

Please remit by check or money order payable (in US funds) to: PNC³

Mail Renewal Form and Remittance to: Andrew Jakes, PNC³ Treasurer
2303 Horseshoe Ct.
Grayslake, IL 60030-9327

.....
(Please do not detach)

Interested in Life Membership?

In accordance with the PNC³ bylaws (ARTICLE II, SECTION 3c), Life Membership may be requested by any individual member in good standing who has been a member for five continuous years and who submits a fee equal to ten times the current annual dues. Any member whose membership number is 1570 or lower will have the necessary five years of membership as of January 1, 2006.

This Life Membership fee pays for Bulk Rate mailing of COIL LINE. Life Members desiring First Class mailing AND those with foreign mailing addresses will have to annually remit to the Club Treasurer the additional amount then in effect for First Class mailing. Life Membership fees are not refundable.

If you wish to apply for Life Membership, please complete the name and address information at the top of this form, along with the items below, and submit the form to the Treasurer along with the Life Membership fee which is 10 times a member's current annual dues.

Date of Birth: _____ Signature of Life Member Applicant: _____

For Club Use: Date Received: _____ Amount: _____ By: _____

Order Form for Polo and T-Shirts with 25-Year Logo

Name _____ PNC# _____

Address Line 1 _____

Address Line 2 _____

City _____ State _____ Zip _____ (or country)

Phone _____ E-mail _____

Colors for Polo Shirts @ \$32 each			
Without Pockets Logo Left			
Qty	Color	Qty	Color
___	Bright Red	___	Oxford Blue
___	Bimini Blue	___	Cool Grey
___	Corporate Blue	___	Sport Grey
___	Butter	___	Bright Royal
___	Putty	___	Sapphire
___	Chino	___	Purple
___	Charcoal	___	Navy
___	Black		
Total Qty ___ x \$32 = Polo Total _____			

Polos with Pocket @ \$33 each			
Pocket Left Logo right			
Qty	Color	Qty	Color
___	White	___	Navy
___	Black	___	Grey
___	Red	___	Royal
Qty ___ x \$33 = Pocket Polo Total \$ _____			

T-shirts @ \$25 each			
Logo Left			
Qty	Color	Qty	Color
___	White	___	Navy
___	Black	___	Grey
___	Red	___	Royal
Qty ___ x \$25 = T-shirt Total \$ _____			

Order Summary	
___ Polo shirts	Total \$ _____
___ Polo with Pocket	\$ _____
___ T-shirts	\$ _____
Shirts come with plate #1 For plate # 6 add \$20 per shirt \$ _____ Extra funds used for Washington 2006	
U. S. Priority Mail @ \$3.85	\$ _____
Per pair of shirts	
Global Express Mail	\$ _____
Email PNC3 Treasurer for rate.	
Total \$ _____	

Circle Shirt Size Small Medium Large XL XXL Use a separate order form if sizes vary
--

Mail Order and Remittance to: Andrew Jakes, PNC ³ Treasurer 2303 Horseshoe Ct Grayslake IL 60030-9327 U. S. Funds only, payable to PNC ³
--



Coil Line

Journal of the Plate Number Coil Collectors Club PNC³

<http://www.pnc3.org>

November 1, 2005

Vol. 18, No. 11

Whole Number 207

Frank Covey, President
16 Grandview Drive
Macomb, IL 61455
309-837-5218
president@pnc3.org

Board Members

John Peterson, VP	Ken Cherry, At Large
Tom McFarland Secy.	Scott Adams, At Large
Andrew Jakes, Treas.	Gene Trinks, Past Pres.

Harold A. Brown, Editor
909 Parker St.
Bowling Green, OH 43402-2107
419-352-7900 (halallen@wcnet.org)

Club auction #33 will close books Nov. 19

Plate Number Coil Collectors Club Auctioneer Joe Sedivy has prepared 434 lots for the 33rd club auction with a closing date of Nov. 19, 2005.

The auction has something for collectors at all levels. Read closely to find the lots that will help fill the gaps in your collection.

Rules for the auction can be found at the end of the lot listings. A bid sheet is attached to the back of this issue of *Coil Line*. The auction is also posted at the club's Web site: www.pnc3.org

If you would like to see a scan of a lot, email Joe at PNC3auctions@AOL.com

A cursory look over the lots by the Editor (who has no lots in the auction) found a complete set of strips of three of the 18c Surrey, strips of three of the 18c Flag #s 1 and 2, Scott 1895 Flag # 1, two choices for Scott 1903 Mail Wagon \$4, strips of 5, a number of the 32c Flag over Porch varieties,, a large number of constant and plate varieties, many used singles, and a small number of covers.

The auction ends with more than 30 lots that have been donated with all proceeds going to the club. Most of these items have no minimum bid and cover the gamut of things members collect and accumulate.

The early bid gets the lot in case of a tie. Please remember to pay your invoice on receipt. Make checks payable to Joe Sedivy so that Joe can keep his bank happy.

Prompt payment means fellow members get their money, you get your stamps and Joe gets to clear his desk so that he can enjoy winter in Chicago.

A call for lots for the next auction will be announced early in 2006. If you have some extra time over the holidays you might want to go through your accumulations to prepare lots of the 2006 auctions. Don't send anything to Joe until he puts out the call.

Bid early!

Message from the President:

Time to renew for 2006

Your annual membership dues for calendar year 2006 are due now. On the front of this *Coil Line* is a form to be submitted to the treasurer with your check attached.

If you know that you do not wish to renew your membership for 2006, please drop the treasurer a note stating your desire. This saves the club the expense of sending a first class reminder notice later. A brief explanation would be helpful.

Those with membership numbers less than 1571 may want to consider lifetime membership in PNC³. Members in good standing for five or more years are eligible for this benefit by paying 10 times the current annual dues rate. With postage rates increasing next year and perhaps again the year after, it's likely that PNC³ will need a dues increase in the future.

With your October *Coil Line* you received a roster of PNC³ members. This list has been published once per year and is intended to be used by members to contact other members with similar collecting interests. Please take time to look at your own entry to make sure the information is correct. If not, send changes to our club Secretary, Tom McFarland. You should also contact Tom if you do not want to be listed on the roster. Contact Tom at: Tom Mc Farland, PNC³ Secretary
ORsecretary@pnc3.org
P.O. Box 756
Princeton Jct NJ 08550

The officers of PNC³ are aware that some of our members may have been impacted by hurricanes Katrina and Rita. If you live in the affected areas of Mississippi, Alabama or Louisiana, please let our club secretary know if you have a new address. It would also be helpful to know that you are alright and that your address has not changed.

PNC³ is in need of a regional meetings coordinator. If you think you might be interested in helping the club promote regional meetings, please contact me. Until a new regional meetings coordinator is appointed, please send

(Continued on page 15)

CURRENT ISSUE NUMBERS & ROLL SIZES

10/10/05 AHT

KEY: A-100, B-500, C-3000, D-10000

EP - EMBEDDED PHOS UT - UNTAGGED
 SP - SURFACE PHOS [xx] - NUMBER INTERVAL
 BK - BLOCK TAG (NL) - LINERLESS
 OA - OVERALL TAG *NEW NUMBER

Plate number intervals are shown in brackets following the stamp name. If more than one is indicated, the order is that in which the different printer's plate numbers are listed.
 Example: G. Washington: [12] for BCA, [11] for Avery.

PRINTER PLATE NUMBER PREFIX LETTERS:

A - American Bank Note	P - Ashton-Potter
B - Banknote Corp. of Am.	S - Sennett Security Prod.
G - Guilford Gravure	V - Avery-Dennison
M - 3M	None - BEP

37c FLAG [14]

#S1111 A, C, D
 #S1111 C (lum red ink)

37c FLAG (SA) [20] [20]

#B1111 C, D
 #S1111 C, D

37c F (SA) [24] [12] [14] [31]

#1111 A
 #2222 A
 #3333 A
 #4444 A
 #5555 A
 #6666 A
 #7777 A
 #8888 A
 #9999 A
 #1111A A
 #2222A A
 #3333A A
 #4444A A
 #5555A A
 #6666A A
 #B1111 A
 #S1111 A
 #S2222 A
 #S3333 A
 #S3333 A (lum red ink)
 #S4444 A
 #P1111 A

37c EGRET (SA) [11] [31]

#V1111 A
 #V2111 A
 #V2121 A
 #V3211 A
 #V3212 A
 #V3221 A
 #V3222 A
 #P11111 A
 #P22222 A
 #P33333 A
 #P44444 A
 #P55555 A

37c TOYS (SA) [12]

#B11111 A
 #B12222 A

1c KESTREL [24]

#1111 B, C (TYPE I)
 #1111 B (TYPE II)
 #1111 C (TYPE III)
 #2222 C
 #3333 C
 #4444 C

1c LAMP [14]

#S11111 C

2c WOODPECKER [24]

#11111 C, D
 #22222 D

3c STAR [14]

#S111 D

3c COFFEE POT [14]

#S1111* D

5c TOLEWARE [14]

#S1111111 D

23c G. W. (SA) [12] [11]

#B11 A
 #V11 A
 #V13 A
 #V21 A
 #V22 A
 #V24 A
 #V35 A
 #V36 A
 #V45 A
 #V46 A

(5c) SEA (SA) [20][22][20]

#B111 D
 #P1111 D
 #P2222 C, D [27]
 #P3333 D [27]
 #P4444 D [27]
 #P5555 D [27]
 #S1111 D

(5c) SEACOAST [10] [14]

#B111 B, D
 #S1111 C, D

(10c) ATLAS (SA) [20] [10]

#B1111 D
 #V11111 D
 #V11222 D
 #V12111 ?
 #V12222 C, D
 #V21111 D
 #V21211 C, D
 #V22111 D
 #V22211 C
 #V22222 D

(10c) LION (SA) [21]

#S11111 D
 #S22222 D
 #S33333 D
 #S44444 D
 #S55555 D [20]
 #S66666 D
 #S77777 D

(10c) LION [14]

#S11111 B, C

(10c) E&S STD [24]

#11111 D
 #22222 D

(10c) E&S STD (SA) [21]

#11111 C, D
 #22222 D
 #33333 D

(15c) WOODY (SA) [21]

#S11111 D

(25c) DINER [14]

#S111111 D

(25c) DINER (SA) [21]

#11111 D
 #22211 C, D
 #22222 C, D
 #33333 D
 #44444 D
 #55555 D

(25c) EAGLE (SA) [20]

#S1111111 D (03 DATE)
 #S2222222 D
 #S3333333 D
 #S1111111 C (05 DATE)

(25c) EAGLE [10]

#S1111111 C

37c OFFICIAL [14]

#S111 A

Sennett's SA Lion S55555 was printed with a different size cylinder than the other plate numbers. Consequently the plate number interval changed from 21 to 20.

Ashton Potter's SA Seacoast P2222 was die cut with two different mats. One is serpentine cut on all four sides while the other has serpentine cuts on the sides and straight cuts on top and bottom.

● In printing the SA Seacoast with cylinders P2222, P3333, P4444 and P5555 Ashton Potter changed the cylinder size from that used to print P1111. Thus the plate number intervals changed from 22 to 27. P3333, P4444 & P5555 have small date & color order BCMY.

■ The Kestrels differ in the order of color laydown. Colors are black, yellow, cyan and magenta, Type I sequence is BYCM. Type II is BCYM. Type III is YMCB. The color order shows in the plate number.

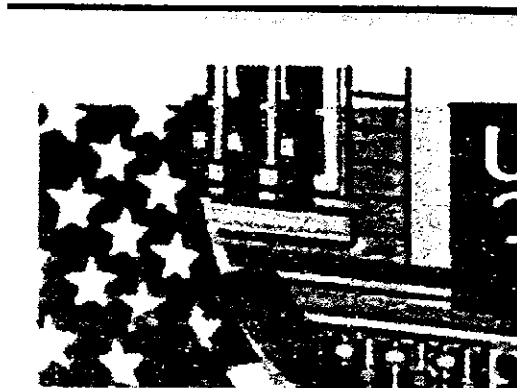
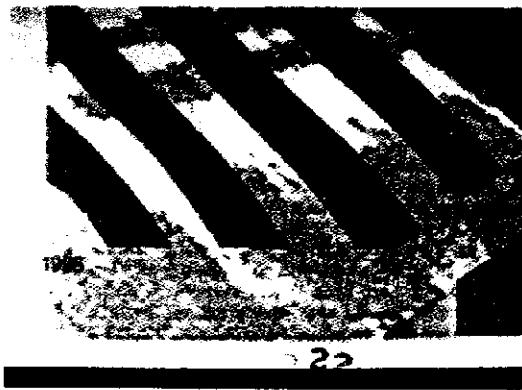
This and That by Doug Iams

Seacoast S2222

According to the Postage Stamp Cylinder Activity Reports that Richard Nazar received from the USPS via the Freedom of Information Act, Sennett produced their version of the self-adhesive Seacoast coil with cylinder number combination S2222 on two different occasions over a year ago (7/21-7/22/04 and 9/3-9/4/04). The combined gross impressions for the two runs was over 1,000,000 impressions, so they should not be scarce, but so far they have not been found.

FoP 222221?

A 6 digit FoP plate number? If the Helter Skelter FoP was the mother of all FoP color shifts, this one must be the daughter. While the Helter Skelter featured horizontal shifts of the colors (see May 2002 page 47 for image), this one features vertical shifts of the colors. The tan and both blues are roughly properly aligned with each other, but the dark brown is shifted up 1 mm and the red is shifted up nearly 3 mm. This puts both the dark brown 2 and the red 2 completely into the stamp design. The thing that looks like a 1 is actually a dark brown design feature that is supposed to be the corner of the bottom of the post. The bases of the tan and dark blue 2's are missing at the bottom of the stamp and they do not show at the top of the stamp. Since the stamps are not shorter than normal, the strip must have been from the top row of the web.



39c Flags

The tentative 2006 US stamp schedule posted on the Virtual Stamp Club web site lists three 39c Flag coils with a tentative issue date of January 3, 2006. Two of the coils are self-adhesive (rolls of 100 and 3000) and the third is WAG (rolls of 3000). No details on the design or the printers are available. At the time this is being written it is still not known if the 39c rate will be approved.

Egret Numbers

Although reports of a few used singles continue to trickle in, no mint examples of the V2121, V3211 or V3221 have been reported. If the rate does change early next year, time is running out to find these numbers, and with December being a bad month to go plate number hunting, now is the time to be out looking for them. Go forth and hunt.

Reporting the Rarities

by Gene Trinks (11/05)

I am reprinting the table including the Flag Over Porch this month because last month's report was incomplete. The count on the 13231A VP was given as 41 last month. In fact, it was 42 because a new report came in at about the same time as the doubly counted stamp was discovered. Thanks to Alan Thomson for keeping me straight on this.

In other news, I received a report of a ps/5 of the Mountain 1111 with the rare 9/10 die cut. A bit of checking revealed that this was one of the two known ps/5s reported earlier in this column. I had hoped that this would be another new find.

Other than that, nothing new to report this month. Reports of new finds had slowed to a trickle during the summer. I was expecting to see an increase now that we're into the fall season, but so far that isn't the case. Since the activity is so limited, I will now constrain these reports to a bi-monthly basis. Look for the next one in the January issue.

The current count stands at:

PNC Issue	PNC ID	Scott No.	Mint*	Used	On Cover
32¢ Flag over Porch (Famous Five)					
66666 10/11 die	1996-8.221	2915A	0	19	2
66666 12/11 die	1996-8.241	2915C	0	3	2
78777 10/10 die	1996-8.211	2915A	4	64	5
88888 11/12 die	1996-8.252	2915C	0	3	0
13231A 10/10 VP die	1996-8.212	2915A	8 + 6	42	14
(5¢) Avery Mountain V333342 13L/12R die	1996-10.211	2904A	0	17	3
V333343 round corner die	1996-10.211	2904A	0	3	0
(5¢) BEP Mountain #1111 9/10 die	1997-1.22	2904B	2 + 2	12	2
(10¢) Green Bike #333 round shoulder die	1998-4.21	3228	1	2	2
#444 square shoulder die	1998-4.22	3228	0	20	2
(10¢) Eagle & Shield STD #11111 round shoulder die	1998-15.21	3271	3 + 1	10	4
(10¢) Atlas #V12111	2003-9	3770	0	12	4
(25¢) Diner #22211 round shoulder die	1998-7.21	3208A	0	48	7

• In MINT column, first number is known ps/5s and second number is known mint singles (See January 2005 issue for illustrations of the round and square corner and shoulder die varieties)

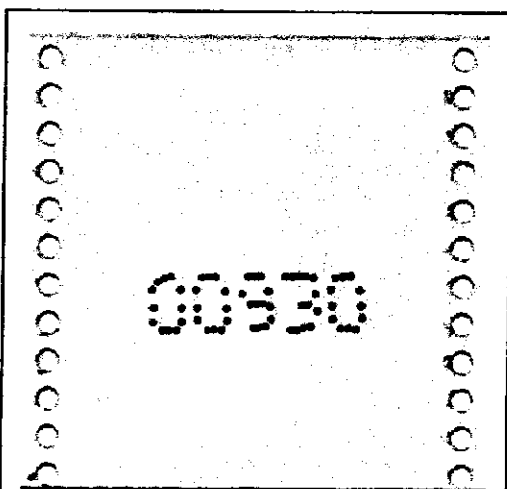
I'm still looking for reports on how members who have made trades or transactions for these rare varieties have valued them. The input I get will help establish the prices in the next Values List. Reports should come to me at gctrinks@sprynet.com or 3603 Bellows Ct., Troy, Mi 48083.

Keep searching, and encourage others to do the same.

Catalog Corner



**3c Silver Coffeepot
Plate S1111
PNC ID 2005-4**



**Middle Back Number 00930
Silver Coffeepot
PNC ID 2005-4**

Part of a middle back number can be seen from the front with a good light source behind the stamp.

The 3c Silver Coffeepot was issued September 16, 2005 at the MILOPEX stamp show in coils of ten thousand. It received limited distribution elsewhere on Sept 17th. The first known plate number S1111 occurs at 14 stamp intervals.

The Silver Coffeepot (PNC ID 2005-4) is the third coil in the American Design series following the 5c Toleware (2002-1) and the 1c Tiffany Lamp (2003-2). All the American Design coil stamps issued to date have been water-activated gum.

The issue uses four colors: light maroon, silver, black and dark maroon. However, the respective colors of the S1111 plate number are white, light maroon, silver, black and white. The white is formed by dropout lettering, i.e. by not printing the area of the stamp occupied by the leading "S" and the final one. This same dropout printing technique is used to create the 2005 date in the lower left corner and on the shiniest parts of the silver coffeepot. Dark maroon could not be used as one of the plate number digits because the plate number is within the dark maroon frame.

Five digit back numbers occur at 10 stamp intervals and have been found on the top, middle and bottom. Back numbers on a single roll will be either odd or even. On even rolls, back numbers will be on the same stamp as the plate number every 70 stamps. On odd rolls, the closest the back number will come to the plate number is one right or one left.

The silver coffeepot replaces the Conestoga Wagon (1988-1) which was the last 3c stamp Transportation coil.

PNC3 AUCTION #33- CLOSING DATE NOV. 19, 2005

LOT	SCOTT#	DESCRIPTION	MIN.BID
A. Mint Plate # Singles & Pairs			
1	(9)	All diff MNH PS-1 of #2543, 2454, 2602, 2605, 2902, & 2912 all XF	3.00
2	Many	\$19.13 face mint hinged & no gum Service Inscribed singles and pairs sold as postage great to dress up cover 3 are PNC's MUST HAVE PERMIT TO USE	15.00
3	O-139	D Official, (2), NO #, XF Scott value \$10.50	3.00
4	(12)	Officials, complete run of coils NO#'s, F/VF-S, #O135/O159 all diff#O141 light fingerprint on gum Face value of \$3.22 Scotts as sgles is \$14.05	3.00
5	(6)	Officials, #O135,(2), O145, both sgles, as pairs, #O158 & O159, as S-3 #O159, all NO#, F/VF-S	3.00
6	2915C	32c Flag, Single & S4, VF-XF, NO #, Face \$1.60	1.50
7	1054A	1-1/4c Palace of Governors, Vert. line pair, F-VF close @ bottom, PASTE up pair, precan. CINN. OH	40.00
8	1225	1c Jackson, Pair, VF, Detroit, MICH, precancel	29.00
9	1303A	4c Lincoln, Pair, XF, Seattle Wash, precancel	10.00
10	1901a	5.9c Bike PC, (2) PS-2, #3VF, #4, XF, lines XF	9.00
11	1903a	9.3c M Wagon, PC, (2), PS-2, #3&4, XF, lines XF	9.00
12	1904	10.9c Hansom, PS-2, #1, F-VF, line XF-S	3.00
13	1904a	10.9c Hansom PC, (2), #1&2, XF, lines XF, line gaps	9.00
14	44	Test Coil Pair, F-VF, close @R, Brown color	3.00
B. Mint Plate # Strips of 3			
15	1891	#1, VF, 1 blind perf @L	25.00
16	1891	#3, F/VF, high & left	75.00
17	1895a	20c Flag, #4, VF-XF, narrow block tag	8.00
18	1895a	#6, VF-XF,	16.00
19	1895a	SAME	30.00
20	1894Ab	4c Stage, (4), #3&4, gap 2L, #5&6, gap 1L, VF-XF, lines XF, #3 has 4 short perfs @bottom R	8.00
21	1900	5.2c Sleigh, #2, F-VF, line VF	2.00
22	1901	5.9c Bike, #3, F perfs just touch @R, line F	1.25
23	1901	#4, VF, line F-VF	3.00
24	1901	(2) #3&4, XF, lines #4, VF, #3, XF both strips w/short perfs @L	5.00
25	1904	10.9c Hansom, #1, F-VF close @R, line F	3.00
26	1904	(2) #1, F-VF, #2, VF, lines VF-XF	7.00
27	1904	(2) #3&4, VF, lines VF, #2 has gum problem from mount	10.00
28	1905	11c Caboose, #1, XF	1.50
29	1906	17c Auto. (7), #1-7, F/VF-XF, lines F-XF #2&4 have gum problems from mounts	10.00
30	1906a	17c Auto PC, (2), #6A, VF, line XF, #6B, F-VF, line VF, both gap 1L	7.00
31	1906a	(2) #7A & 7C, VF, lines VF	6.00
32	1907	18c Surrey, #3, VF-XF, line XF	20.00
33	1907	#4, VF, line VF	20.00
34	1907	#4, F-VF low, line VF-XF, gum problem from mount	20.00
35	1907	(18,) #1-18, F-VF, lines F-XF	85.00
36	1908	20c Pumper, (2), #7&8, F-VF, lines F-VF, #7 just clears bot.	20.00
37	1908	#11, XF, line XF	10.00
38	1908	(9) #1,3,4,5,12-16, #14, F-VF, all others VF, lines F/VF-XF	15.00

39	1908	(16) #1-16, F-XF, lines F-XF, few have pulled perfs	115.00
40	2005	20c Consumer, (4), #1-4, F-VF, lines VF-XF	15.00
41	2115a	22c Flag, narrow tag block, (8), #1,3,5,7,8,11,12, T1, F-VF #T1, just clears bottom trace of 2nd # at top	10.00
42	2115	22c Flag, Wide tag blocks, (6), #2,4,6,10,13,15, F-VF #15 tagging shift to L 40%	8.00
43	2149a	18c Washington PC, (3), #11121 & 33333, low gloss gum #43444 dull gum, all VF	5.00
44	2150a	21.1c Letter PC, #111111, VF bit high	10.00
45	2260	15c Tug, #2, XF-S	1.00
46	2261	16.7c Popcorn W, #1, XF	1.00
47	2464	23c Lunch W, #2, XF	1.50
48	2889	G Flag, Black, #1111, XF	4.00
C. Mint Plate # Strips of 4			
49	1891	18c Flag, #1, XF	60.00
50	2005	20c Consumer, #2, VF-XF, line S, perfs bent between #1&2	15.00
D. Mint Plate # Strip of 5			
51	1891	18c Flag, #2, VF	36.00
52	1891	#2, XF, small holes	40.00
53	1891	#4, VF just off to R from being XF	5.00
54	1895	20c Flag, #1, F-VF, perfs bent between 1&2, few pulled perfs @ bottom R	20.00
55	1895	#1, VF, 2 short perfs @ bottom L	27.00
56	1895	#4, VF	465.00
57	1895	#6, XF	95.00
58	1895a	20c Flag, narrow block tag, #9, VF	3.00
59	1895a	#10, VF	6.00
60	1895a	#12, XF	4.50
61	1895b	20c Flag PC, #14, VF-XF, 1 short perf @L	40.00
62	1898Ab	4c Stage PC, #4, XF, lines VF, gap 2L	2.50
63	1900	5.2c Sleigh, #1, XF, lines XF	4.00
64	1900	#2, XF, line S	4.00
65	1900	#3, F-VF, high, line VF	90.00
66	1900	5.2c Sleigh, #5, F-VF bit low, line VF	145.00
67	1900a	5.2c Sleigh PC, #2, VF, line XF	7.00
68	1900a	#4, VF, line VF, couple short perfs @L	12.00
69	1900a	#4, S, line XF, gap 2L	9.50
70	1901	5.9c Bike, #3, F/VF low&L, line F-VF, all perfs bent between	5.00
71	1901	#3, F, line F, perfs left of line just touch, right of do not	5.00
72	1901	#4, F-VF close @R, line F-VF, gum problem on	9.00
R stamp			
73	1901a	5.9c Bike PC, #4, F-VF low&R, line VF,	14.00
74	1901a	#5, F-VF, line XF, line gap	70.00
75	1901a	#6, VF, line VF, gap 1/8L	70.00
76	1902	7.4c Buggy, #2, VF, type II paper	7.00
77	1903	9.3c Mail W., #3, F-VF, line F-VF	15.00
78	1903	#4, F-VF, line F-VF, 4 short perfs topR	15.00
79	1903	#5, F-VF, line VF	195.00
80	1903	#5, XF, line XF	200.00
81	1903a	9.3c Mail W. PC, #1, F-VF, line VF	8.00
82	1903a	#2, VF, line VF-XF	7.00
83	1903a	#3, VF, line VF-XF, gap 1-1/2 R	35.00
84	1903a	#3, VF, line VF-XF, gap 2R	15.00
85	1903a	#4, F-VF, line XF, gap 2L	16.00
86	1903a	(2) #5, VF, lines XF, one no gap other gap 2-1/8L	4.00
87	1904	10.9c Hansom, #1, F-VF, close @R, line F-VF	10.00

88	1904	#2, VF, line XF	12.00
89	1904a	10.9c Hansom PC, #2, F-VF, line F-VF, line gap	8.00
90	1905a	11c Caboose PC, #1, XF, type IIa paper	3.00
91	1906	17c Auto, (2), #1&2, VF, lines VF	2.00
92	1906	#7, VF, line VF	2.75
93	1906a	17c Auto PC, #6A, VF, line XF, gap 1L	5.00
94	1907	18c Surrey, #1, VF/XF, line VF	50.00
95	1907	#1, F-VF close @L, line VF-XF	30.00
96	1907	#4, VF bit low, line XF	40.00
97	1907	(2) #13&14, XF, lines VF-XF	3.00
98	1908	20c Pumper, #1, VF bit close @L, line S	110.00
99	1908	#7, XF, line XF-S	125.00
100	1908	#7, F-VF high&R, line VF, nibbed perfs @R	25.00
101	1908	#8, VF close @L, line XF	130.00
102	2005	20c Consumer, #1, F-VF close @R, line F-VF	95.00
103	2005	#2, VF, line XF	115.00
104	2005	#3, F-VF, line VF	55.00
105	2115	22c Flag, #2, VF, wide block tag	2.00
106	2115b	22c Flag test, #T1, XF	1.25
107	2124	4.9c Buckboard, (2), #3&4, VF, lines XF	2.00
108	2124a	4.9c Buckboard PC, (2) #5, VF, #6, F-VF, lines F-VF, both line gaps	5.00
109	2125	5.5c StarTruck, #1, VF-XF	1.00
110	2125	5.5c StarTruck, #1, XF	1.00
111	2127	7.1c Tractor, #1, VF	2.00
112	2127a	7.1c Tractor PC, #1, VF	2.00
113	2127a	SAME	2.00
114	2128a	8.3c Ambulance PC, #2, XF	1.00
115	2128a	#3, F-VF, line XF, gap 1R	2.00
116	2129	8.5c TowTruck, #1, VF	1.25
117	2129	#1, XF	2.00
118	2130	10.1c Oil W., #1, XF, 1 short perf and 2 blind perfs @L	2.00
119	2130a	10.1c Oil W. PC, #1, XF, black precancel	1.25
120	2130a	#2, VF	3.00
121	2130b	10.1c Oil W. PC, #2, XF, red precancel	2.00
122	2132	12c Stanley, (2), #1, VF, #2, XF, lines XF	2.00
123	2132a	12c Stanley PC, #1, F-VF, line S, gap 1L	3.00
124	2132a	(2) #1, XF, line XF, #2, F-VF, line F-VF, #2 line gap	2.00
125	2132B	12c Stanley B press PC, #1, XF	9.50
126	2132B	SAME	9.00
127	2132B	#1, VF	9.50
128	2133	12.5c Pushcart, #2, VF-XF	2.25
129	2133a	12.5c Pushcart PC, #1, VF	1.25
130	2133a	#2, XF	1.75
131	2134	14c Iceboat, #2, XF, line VF	2.00
132	2225	7.6c Carreta, #1, XF	2.00
133	2231	8.3c Ambulance PC, #2, F-VF	3.00
134	2256	8.4c Wheelchair, #1, VF	2.00
135	2256	#3, XF	5.00
136	2257b	10c CanalBoat, (2), #1&2, XF, shiny gum	5.00
137	(6)	10c Canalboat, #2257, #1, #2257b, #2-4, #2257c, #4&5, all are XF, #4 of 2257c has tag break @2R	11.00
138	2261	16.7c Popcorn W, #1, F-VF	3.00
139	2261	#1, VF	1.50
140	2262	17.5c RaceCar, #1, VF	3.00
141	2263	20c CableCar, #2, S	1.25

142	2264	20.5c FireTruck, #1, XF	5.00
143	2279	E Earth, (3),#1111, 1111, 1211, all XF	5.00
144	2280a	25c Yosemite, prephos,#1, XF	17.00
145	2280a	#13, S	1.75
146	2280a	(6) #7,9,10,11,13,14, F/VF-XF	4.00
147	2280a	(5) #10,11,13-15, VF-XF	10.00
148	2454	5c Canoe, #S11, S, satin gum	6.50
149	2454v	#S11, XF, shiny gum	2.00
150	2457	10c TractorTruck, #1, XF	2.00
151	2464a	23c LucnhW, (2), #3, dull gum #3, shiny gum, both VF-XF motled tagging	10.00
152	2466c	32c Ferry, #4, VF-XF, dull gum	7.50
153	2466c	32c FerryBoat, #4, low gloss gum, XF	10.00
154	2495Ab	32c Pear&Orange, #V11111, XF	4.50
155	2518	F Flower, #1211,VF	10.00
156	2518	#2222, XF, perf fault @R	2.00
157	2518	#2222, S	2.00
158	2523	29c Rushmore, #3, XF	2.00
159	2523	#6, VF	1.50
160	2529a	19c FishingBoat, #A5555, XF-S	4.50
161	2529a	(5) \$A55555, A5556, A6667, A7667, A7679, A7766, A7779, all VF-XF	15.00
162	2602	10c E&S,#A12213, VF-XF	8.00
163	2602	#A22113, XF	.75
164	2602	#A33334, S	40.00
165	2602	#A33334, XF	45.00
166	2602	(4) #A33335, all XF	6.00
167	2602	#A1110101011, S	8.00
168	2602	#A1211101010, XF-S	2.50
169	2604	10c E&S, (2), #S11111 & S22222, XF	5.00
170	2605	23c PresortFlag, #A111, VF	1.75
171	2888	G Flag blue background, #S11111, XF	2.00
172	2889	G Flag,black, #1111, XF, 1 short perf @R	6.00
173	2890	G Flag,Blue, #A1112, XF	2.50
174	2890	#A1314, XF	2.50
175	2890	#A2313, S	5.50
176	2890	#A3423, XF	6.50
177	2890	#A4426, XF	2.75
178	2890	(2) #A4426 & A4427, VF-XF, both strips have light finger print on gum	4.00
179	2890	#A4435, XF	165.00
180	2890	#A5437, VF	6.00
181	2890	(4) #A1314, A1324, A3314, A5427, VF-XF	10.00
182	2891	G Flag, Red, perf, #S1111, F-VF low but # clears	2.50
183	2892	G Flag,Red, roul., #S2222, XF	2.50
184	2892	(2) #S1111 & S2222, VF-XF	10.00
185	2893	G Flag, Non-Profit, #A21111, S, fingerprints on gum	1.50
186	2912B	25c Jukebox, #11111, XF	3.00
187	2913	32c FOP, #22322, XF	5.00
188	2913	#22322, XF-S	5.00
189	2913	#22322, XF, dull gum	8.00
190	2915A	32c FOP S/A, #22222,VF 10 x 10, pv/vp	4.00
191	2915A	#23222, XF, 10 x 10, pv/vp incision style C	4.00
192	2915A	#33333, VF, 10 x 10, pv/vp, incision style C	4.00
193	2915A	#45444, XF, 10 x 10, pv/vp, incision style A	4.50
194	2915A	#78777, VF, 11 x 10, pp/vv, incision style A	4.00

195	2915A	#87888, VF-XF, 11 x 10, pp/vv	45.00
196	2915A	32c FOP S/A, #87898, VF, 10 x 10, pv/vp, incision style B	10.00
197	2915A	#87898, VF, 10 x 10, pv/vp	6.50
198	2915A	#87898, F-VF, 11 x 10, pp/vv	8.00
199	2915A	#88888, F-VF, 11 x 10, pp/vv, incision style A	4.00
200	2915A	#89878, XF, 11 x 10, pp/vv	5.50
201	2915A	#89888, F-VF, 11 x 10, pp/vv	9.50
202	2915A	#89898, F-VF, 10 x 10, pv/vp	5.00
203	2915A	#97898, F-VF, 10 x 10, pv/vp	5.50
204	2915A	#97898, VF, 10 x 10, pv/vp, incision style B	8.00
205	2915A	#99999, XF, 11 x 10, pp/vv	7.00
206	2915A	#13311A, VF, 10 x 10, pv/vp, incision style A	4.00
207	2915A	#33333A, F-VF, 10 x 10, pv/vp, incision style A	3.00
208	2915A	#44444A, VF, 10 x 10, vp/pv, incision style D	4.00
209	2915A	#66666A, F-VF, 10 x 10, pv/vp, incision style A	4.00
210	2915C	32c FOP, #55555, XF, 12 x 12, pv/vp	20.00
211	2915C	#66666, VF, 11 x 12, vv/pp	6.00
212	3054	32c Yellow Rose, (3), A6666, 6677, 6777, VF-XF	9.50
213	3132	25c Jukebox, linerless, #M11111, S	4.00
214	3265	H Hat S/A, #2222, F/VF close @R	5.00
215	3265	#3333, VF	5.00
216	3281	33c FOC S/A, #8888, F-VF	3.00
217	3281	#9999, F-VF	3.00
218	3617	23c Washington, S/A, (4), #V24, V35, V45, V46, VF-XF, all are pv/vp	11.00
219	3632Ae	37c Flag, #S4444, VF, vp/pv	3.50
220	3785b	5c SeaCoast, #P2222, XF, die cut 4 side, date 2003, tagged	55.00
221	3829	37c Egret, #V3212, XF, vp/pv	3.00
222	3829	#V3212, F-VF, pv/vp	4.00
223	(5)	#2115, #8, #2526, #S2222, #2609, #1, #3466, #2222, #2523, #4, VF-XF, face \$6.85	6.50
224	(9)	all diff PS-5, all VF-XF face \$4.12	4.00
225	(4)	#2526, #2222, #2523a, #A11111 & A22211, #2609, #2, all VF-XF, face \$5.80	5.50
226	(5)	#2893, #A11111 & A21111, #2888, #S11111, #3447, #S33333, #3785, #P2222, VF-XF, face \$2.50	2.00
227	O135	20c Official, #1, F-VF	15.00
228	O139	D Official, #1, VF	40.00
229	O159	37c Official, #S111, XF	4.00
230	O159	#S111, S	5.50
231	CV31	Variable Rate, 18c, #1, XF, old font dull gum	7.50
232	(3)	#CV31, 19c & 23c, #CV31a, 29c all #1, XF	11.00
E. Mint Plate # Strip 6 or Longer			
233	1304A	5c Washington PC, S-8, XF, Richmond, VA, shiny gum	99.00
234	1903a	9.3c MailW.PC, PS-7, #8, F-VF, line VF, gap 2-1/8L	230.00
235	1904	10.9c Hansom, PS-6, #1, VF, line VF-XF	18.00
236	1904	10.9c Hansom, PS-6, #2, VF, line VF	18.00
237	1904a	10.9c Hansom PC, PS-9, #4, F/VF, line VF, gap 3-7/8R	275.00
238	1906	17c Auto, roll of 500, #3&4, VF, lines VF, face \$85.00	77.50
239	1908	20c Pumper, (2), PS-5, #15, PS-7, #16, F-VF, lines VF	8.00
240	2123A	3.4c Bus, PS-8, #1, XF, line VF, gap 3R	20.00
241	2252a	3c Conestoga W, PS-7, #3, XF, shiny gum	---
242	2466c	32c FerryBoat, PS-7, #4, VF, dull gum	12.00
243	2466	PS-7, #5, VF, shiny gum	9.00
244	2866B	G Flag S/A, PS-7, #V11111, XF	6.00
245	2890	G Flag Blue, PS-7, #A1314, XF	3.00

246	2890	PS-7, #A1314, VF-XF	5.00
247	2890	PS-7, #A3426, XF	5.00
248	2915	32c FOP S/A, PS-7, #V11111, VF-XF	6.00
249	2915A	32c FOP S/A, PS-7, #99899, VF, 11 x 10, pp/vv	80.00
250	2915A	PS-7, #77777A, F-VF, 10 x 10, vp/pv	90.00
251	3132	25c JukeBox, PS-7, #M11111, VF-XF	3.00
252	3617	23c Washington, PS-7, #V13, XF, pv/vp	5.00
253	3617	PS-7, #V21, VF-XF, pv/vp	5.00
254	3617	PS-7, #V24, XF, pv/vp	5.00
255	3617	PS-7, #V35, VF-XF, pv/vp	5.00
256	3617	PS-7, #V36, XF, pv/vp	5.00
257	3617	PS-7, #V45, F-VF, pv/vp	5.00
258	3617	PS-7, #V46, F-VF, pv/vp	5.00
259	3829	37c Egret, PS-7, #V2111, F-VF, pv/vp	6.00
260	3829	PS-7, #V3212, VF, vp/pv	3.50
261	3829	PS-7, #V3222, F-VF, pv/vp	6.00
262	O135	20c Official, PS-9, #1, XF, # on 3rd from R	26.00
F. Imperfs			
263	1897Ac	2c Loco, S-2, NO#, VF-XF	40.00
264	2603a	10c E&S, S-5, NO#, XF	25.00
265	2607c	23c USA Presort, PS-6, #1111, S	90.00
G. Misperfs			
266	2607	23c USA Presort, PS-6, #1111, XF horiz. perfs thru right side of "3", 3-1/2mm to left shift	1.50
267	2607	PS-8, #1111, XF horiz. perfs thru "S" of USA	10.00
268	3550	34c UWS, S-2, NO#, XF horiz. perfs between USA/34	6.00
H. Miscut			
269	1897A	2c Loco, PS-7, #10, VF vert, line XF, # 25%top,75% bot.	5.00
270	1901	5.9c Bike, PS-5, (2), #3, F-VF vert, #25% top, 75% bot., #4, # split 50/50, lines VF-XF	10.00
271	1901a	5.9c Bike PC, PS-3, #6, VF-XF vert, line VF-XF, #5% top 95% bottom, line gap	15.00
I. Constant Plate & Mat Varieties			
272	1898A	4c Stage, SP-5, #\$, VF, line VF, hollow 4 type, 1 blind perf	1.00
273	1902	7.4c Buggy, S-6, NO#, VF, blown tire, type IIa paper	27.00
274	1908	20c Pumper, PS-4, #2, F-VF, line F-VF, type 1 gripper crack over "e", 20T2V1, gum side of strip along bottom looks black from mount	50.00
275	2124a	4.9c Buckboard PC, PS-5, #6, XF, line XF-S, missing period after ORG @1R, dble gap in top bar, linegap	5.00
276	2124a	PS-6, #4, XF-S, line VF, long buggy whip, line gap	4.00
277	2128a	8.3c Ambulance PC, PS-5, VF-XF, line XF-S, gap 3/4L, precancel matt shifted 4mm to right of gap so the perfs touch capitol "T" of CAR-RT and the matt is almost normal to left of gap	2.00
278	2136	25c Bread W., (2), PS-5, #2, XF, both with smashed 2 plate number	25.00
279	2280a	25c Yosemite, (2), PS-5, #6, XF, small ski slope the top of 3rd tree from R missing--- NEW FIND!!!	99.00
280	2466	32c FerryBoat, PS-5, #5, XF, dull gum, 2 slashes through "9" of 1900 @1R	15.00
281	2602	10c E&S, PS-5, #A11111, XF, broken yellow 1	5.00
282	2603	10c E&S, PS-5, #22222, XF, untagged, extra blue 1 type	7.50
283	2603	PS-7, #22222, XF, blue bird type	8.00
284	2604	10c E&S, PS-7, #S22222, XF, dropped blue 2, Coil line 7/95	8.00
285	2609	29c Whitehouse, PS-7, #2, XF, hot chimney & driveway	10.00

286	2609	PS-7, #11, XF, red eagle and fire in front window	10.00
287	2609	PS-5, #18, VF, red eagle	10.00
288	2915A	32c FOP, PS-7, #87888, VF, 11 x 10, pp/vv, dot under porch post on # stamp	60.00
289	2915A	PS-7, #87888, VF, 11 x 10, pp/vv, dot under date on # stamp	75.00
290	2915A	PS-5, #87898, VF, 11 x 10, pp/vv, dot over "U" of USA @2L	25.00
291	2915A	PS-7, #88888, F-VF, 11 x 10, pp/vv, dot under date on # stamp	15.00
292	2915A	PS-5, #88898, VF, 10 x 10, pv/vp, dot over "U" of USA @ 2L	280.00
293	2915A	PS-7, #89878, VF, 11 x 10, pp/vv, dot over "U" of USA @ 2L	10.00
294	2915A	PS-7, #89888, XF, 11 x 10, pp/vv, dot on "2" of 32 on # stamp	35.00
295	2915A	PS-5, #89888, VF, 11 x 10, pp/vv, weeping flag @ 1R bottom	30.00
296	2915A	PS-5, #89888, VF, 11 x 10, pp/vv, dot over "U" of USA @ 2L	30.00
297	2915A	PS-5, #89888, VF, 11 x 10, pp/vv, dot under date on # stamp	30.00
298	2915A	PS-5, #89888, VF, 11 x 10, pp/vv, dot under porch post on # stamp	30.00
299	2915A	32c FOP S/A, PS-5, #89888, VF, 11 x 10, pp/vv, bullet hole in post on # stamp	30.00
300	2915A	PS-7, #89899, VF, 10 x 10, pv/vp, dot over "A" of USA @ 2L	450.00
301	2915A	PS-5, #99899, VF, 11 x 10, pv/vp, dot over "A" of USA @ 2L	100.00
302	2915A	PS-5, #9.9999, F-VF, 11 x 10, pp/vv	70.00
303	2915A	SAME	75.00
304	2915a	PS-7, #9999, VF, 10 x 10, pv/vp, misregistration of color Brown 9 over Red 9 see Coil Line 5/97	100.00
305	2915A	PS-5, #22222A, F-VF, jumping 2's light blue down dark blue up	15.00
306	2915A	PS-7, #78777A, F-VF, 10 x 10, pv/vp, blue dot on white flag stripe @2R, see Coil Line 9/98	15.00
307	3044	1c Kestrel, PS-5, #1.1111, B,Y,C,M, XF	10.00
308	3053	20c BlueJay, PS-7, #S1111, XF, Cobra cut Bottom	15.00
309	3053	PS-7, #S1111, VF, imbeded Cobra Top	
310	3264	H Hat, PS-7, #3344, XF, black dot top 3L and paint chip on point of star @2R	15.00
311	3264	PS-7, #3344, XF, cut black 4 on # stamp paint chip on point of star @ 2R	15.00
312	3264	PS-9, #1111, F-VF, jumbo stamp @3L 23mm all others in strip 22 mm from tip of perf to valley	40.00
313	3281	33c FOC, PS-9, #6666A, F-VF, jumbo stamp @2R, 22-1/2mm all others 22mm	40.00
314	3453	N/D Liberty, PS-7, #1111, VF, dark date variety	8.00
315	3617	23c Washington, PS-7, #V35, VF-XF, Bell cut top	6.00
316	3617	PS-7, #V45, XF, Bell cut top	6.00
317	3617	PS-7, #V46, F-VF, Bell cut top	6.00
318	3617	PS-5, #V46, VF, Bell cut bottom	6.00
319	3617	PS-7, #V46, XF, Knoll cut top	10.00
320	3617	PS-7, #V46, XF, Knoll cut bottom	15.00

321	3631	37c Flag, PS-5, #S1111, XF, snowman perfstop six perfs are small bottom five larger	15.00
322	3632c	37c Flag, PS-6, #S1111, mat shift between 1L & 2L, XF	15.00
323	3829A	37c Egret, PS-7, #P22222, VF, blue seam line	15.00
324	3829A	PS-5, #P22222, S, red seam line	7.00
325	3829A	PS-5, #P33333, XF, blue dot below "P" of plate number	20.00
J. Tagging Varieties			
326	18c	Washington PC, PS-5, #33333, VF, tagged error, dull gum	26.00
327	2260b	15c Tug, PS-5, #2, VF, looks untaggd but there a tiny specs of tagging seen with close look! small tearby bow on # stamp	10.00
328	2451	4c SteamCarriage, PS-5, #1, VF, tag gap 1L	1.00
329	2468	1\$ Plane, PS-3, #1, S, 2-1/2mm along top untagged could be from top row of web	5.00
330	2603b	10c E&S, PS-5, #11111, VF, tagged error	9.50
331	2607	23c USA Flag, XF, tagged error	65.00
K. # on #			
332	2891	G Flag Red, PS-7, (2),#S1111, VF, matched set of back black #1920 one top and one bottom	35.00
333	2902	5c Butte, #S111, VF-XF, top purple back #2920	3.00
334	2905	10c Auto, PS-5, #S111, VF, top black back #02910	3.00
335		PS-5, #S111, S, bottom purple back #230	2.50
336	2912	25c Jukebox, PS-3,#S11111,XF,bottom pink back #09430	2.00
337	2914	32c FOP, (2), PS-5, XF, rotation set with double back #'s one strip position 2, black top and bottom #08760 other strip position 4 black top and bottom #08720	40.00
338	2914	PS-7, #S11111, XF, top black back #05200	10.00
339	2914	PS-7, #S11111, VF, top purple back #00620	8.00
340	2914	PS-7, #S11111, XF, top purple back #00410	8.00
341	2915B	32c FOP S/A, PS-5, #S11111, XF, top pink back#08440	8.00
342	2915B	PS-5, #S11111, XF, top pink back #00840	8.00
343	2915D	32c FOP S/A, PS-7, #11111, VF-XF, bottom aqua back #0820 plus mat shift between 1R & 2R	40.00
344	3207	5c Wetlands,PS-5,#S1111,S, bottom pink back #02040	2.75
345	3280	33c FOC, PS-7, #1111, XF, top aqua back #0940, fat font	8.00
346	3280	PS-7, #2222, XF, top aqua back #2460, fat font	10.00
347	3282	33c FOC S/A, PS-5, #2222, XF, bottom aqua back #0380 round shoulders	50.00
348	3282	PS-7, #2222, XF, top aqua back #1160 plus mat shift between # stamp and 1R, round shoulders	150.00
349	3447	10c Lion, PS-5, #S66666, VF, middle pink back #03610 on position 5	1.25
350	3475	21c Bison, PS-8, #V1111, middle black back #000630776 # upside down in relation to design and starts about middle of 2R ends middle of # stamp, XF	20.00
351	3632C	37c Flag S/A,PS-5,#S1111,VF-XF,top pink back #00570	6.50
352	3785b	5c SeaCoast, PS-5, #P2222, tagged, XF-S, die cut 4 sides top blue back #8980 on position #1	55.00
353	3785b	PS-7, #P2222, VF, top blue back #200, # on #	10.00
L. Other Varieties			
354	1895f	20c Flag, S-2, NO#, XF, black missing error only flag and top half of pole printed	35.00
355	2466b	32c FerryBoat, PS-7, #5, XF, Bronx Blue color error	120.00
356	2491c	29c PineCone, PS-7, #B1, XF, inverted backing style B	7.50

357	2523c	29c Rushmore, PS-7, #7, XF, Toledo Brown color error	140.00
358	2799-2802	29c Christmas, PS-8, #V1111111, XF inverted backing	8.00
M. First Day Covers			
359	1901	5.9c Bike, PS-4, #3, XF, on Artmaster FDC unaddressed	12.00
360	1907	18c Surrey, PS-1, #2, VF, on Artmaster FDC unaddressed	10.00
361	1908	20c Pumper, PS-2, #3, XF, on Artmaster FDC unaddressed	8.00
N. Other Covers			
362	2518	F Tulip, PS-1, #1211 plus 2181 to equal 52c rate, tied to #10 white cover by heavy BHC from Carol Stream IL on 8/7/1994 mis-directed to MD see back stamp	10.00
363	2602	10c E&S, #A32333, XF, on 4-1/2 x 7-1/2 unopened white window cover from Texaco	150.00
364	203B	10c E&S, #22222, VF, on 3-7/8 x 7-1/2 faded white #7 cover unopened from Dr Barry A Stein tied by a black mailer permit #1 cancel	15.00
365	2904A	5c Mountains, PS-1, #V333342, XF on #10 white window cover from the NRA, stamp 12 x 13 perfs opened at top little uneven, small tear right of window	15.00
366	2904A	PS-1, #V333342, XF, 12 x 13 perfs, on #10 white window cover with contents opened at top from The Rutherford Institute	30.00
O. Used Singles			
367	1891	18c Flag, #3, VF, BMC	3.50
368	1891	#3, VF, PMC	5.00
369	1891	#6, F-VF, BMC, couple of thins and short perfs a space filler for the rare # stamp	100.00
370	1901a	5.9c Bike PC, #5, F-VF, shows line gap	20.00
371	1901a	#6, XF, shows line gap	25.00
372	1903a	9.3c Mail W.PC, #4, F-VF	3.50
373	1903a	#8, F-VF, perfs cut @R from affixing machine	25.00
374	1907	18c Surrey, #14, F-VF PMC	2.50
375	2466B	32c Ferryboat, NO# single Bronx Blue color error, XF	1.00
376	2602	10c E&S, #A32333 on piece F-VF, perfs @L cut by the affixing machine like most	50.00
377	2603B	10c E&S, #22221, XF, tagged error	3.00
378	2607A	23c USA Presort, #1111, XF, tagged error, scuff on left leg of "U" full perfs @ L, short but all there @R	10.00
379	(3)	10c E&S, #2603B #11111 & 22221, #3271, #11111, all F-VF, first item is tagged second is not tagged	5.00
380	(5)	10c E&S, #2602, #A77777, A88888, #2604, #S11111 & S22222, #3271, #11111, F-XF	1.50
381	(18)	all diff 32c FOP, #2913, 2914, 2915A valued over \$30.00 all F-XF, 3 of 2915A faulty	4.50
382	(3)	all diff 32c FOP, #2913, #66666, #2915C, #66666, 12 x 12 and 11 x 12, all XF	5.00
383	2915A	32c FOP S/A, #87888, VF, 11 x 10, pp/vv	32.00
384	2915A	#87898, VF, 11 x 10, pp/vv	3.00
385	2915A	32c FOP S/A, #89878, XF, 11 x 10, pp/vv	2.00
386	2915A	#89888, F-VF, 11 x 10, pp/vv	6.00
387	2915A	#97898, F-VF, 11 x 10, pp/vv thinned	4.00
388	2915A	#77777A, 11 x 10, vp/pv, VF,	23.00
389	2915C	32c FOP S/A, #S11111, XF	3.00
390	2915C	#66666, 12 x 12, vp/pv, VF, hvy cancel	1.50
391	2915C	#66666, 12 x 12, vp/pv, VF	4.00
392	2915C	#66666, 11 x 12, vv/pp, VF	3.00
393	O135	20c Official, #1, VF	6.00

394	(30)	All diff. used PS-1 20c-37c values with a few non-denominations also F/VF-XF	1.50
395	(100's)	Nice mixed lots of #2913 & 2915A singles on paper divided by plate #'s in glassines some faults noted in a lot like this range is F-XF	29.00
P. Used Pairs & Strips of 3			
396	2257	10c CanalBoat, #5, on middle stamp, VF, canceled by a MAR 28, 2002 Received mark	2.00
Q. Misc.			
397	2135	17c DogSled, 4 x 5 News Paper Negative? but it is positive of the stamp, XF	10.00
398	2457	10c TractorTrailer, PS-5, #1, S, plus label from foll of 500 label is faded w/ some adhesive bleeding	2.50
399	2602	10c E&S coil label from roll of 10,000, VF	1.00
400	2893	G Flag, non denominated coil label and wrapper from item #7796, USPS 1992 by Stamp Venturers, VF	1.00
401		Pad label from 100 booklets of 37c Flag, item #670900 by Banknote Corp of America, VF	1.00
R. Club Donations			
402	CV31	Variable Rate, (20), values 1-20c NO# singles, face \$2.10 old font dry gum, VF-XF	---
403	1906	17c Auto, (2), PS-2, #1&3, VF, lines VF	---
404	2124a	4.9c BuckBoard, (2), #2, gap 1R, #6, line gap, both VF lines F-VF	---
405	2225b	1c Omnibus, PS-3, #3, XF, plate # looks to be damaged	---
406	3044	1c Kestrel, PS-3, #1111, BYCM, VF	---
407	2115	22c Flag, PS-5, #8, XF	---
408	2115c	22c Flag, PS-5, #18, D press, VF, perfs bent between 1&2 and 4&5	---
409	2602	10c E&S, PS-5, A1111101010, XF	---
410	2602	PS-5, #A1411101010, XF	---
411	2602	PS-5, #A1411101011, XF	---
412	2602	PS-5, #A1412111110, XF	---
413	2602	PS-5, #A1412111111, XF	---
414	2889	G Flag Black, PS-5, #2222, VF, ink smudge on gum	---
415	2892	G Flag Red, PS-5, #S2222, rouletted, VF	---
416	2915A	32c FOP, PS-5, #66666, VF, 11 x 10, pp/vv	---
417	2915A	PS-5, #89898, F-VF, 10 x 10, pv/vp	---
418	2915A	PS-5, #13231A, VF, 10 x 10, pv/vp	---
419	2915C	32c FOP, PS-5, #66666, VF-XF, 11 x 12, vv/pp	---
420	3617	23c Washington, PS-5, #V46, VF-XF, Bell cut bottom	---
421	3757	1c Tiffany, PS-5, #S11111, XF	---
422	3829	37c Egret, PS-5, #V2111, XF, vp/pv	---
423	3874	5c SeaCoast, PS-5, #P3333, VF	---
424		S-5, Stamp Venturers black flying eagle test strip	---
425	3133	32c FOP S/A, PS-7, #M11111, F-VF	---
426	CV32	Variable Rate, PS-7, #A11, XF, 29c values	---
427	2603b	10c E&S, PS-5, #11111, F-VF, tagged error	---
428	3829	37c Egret, PS-5, #V2111, roll end, serpanten diecut @R	---
429	3615	3c Star, PS-5, #S111, XF, top pink back #0629G or "The Clamp" see Coil Line Jan/04	---
430	3631	37c Flag, PS-5, #S1111, XF, bottom pink back #2560	---
431	CV31b	19c Variable Rate, (100) in strips no #'s for postal use	19.00
432	2640	37c Toy Fire Engine, PS-1, #B12222, tied to #10 white Cover from Dental Clinic, VF	---
433	3632	37c Flag, PS-1, #333, VF, tied to #10 white cover from	---

THE END**BIDDING INCREMENTS**

\$0.50 to \$4.75 = .25
 \$5.00 to \$9.50 = .50
 \$10.00 to \$49.00 = 1.00
 \$50.00 to \$97.50 = 2.50
 \$100.00 to \$495.00 = 5.00
 \$500.00 and over = 10.00

BIDDERS PLEASE READ

- 1) Number in () indicates the number of items in the lot or the number of items within a subset in that lot.
- 2) Lots with — in the Min Bid column have an opening bid of .25c since this is the lowest bidding increment, all other lots have a Minimum bid listed and no bids below those MINS. will be accepted!
- 3) For precancelled strips if there is a GAP it is listed, no listing NO GAP!
- 4) In case of a tie bid, the earliest post mark or email date will win.
- 5) All winning bids will be at one advance over the second highest bidder, but if you are bidding on a — lot and you are the only bidder your bid wins as there is no second highest bidder.
- 6) R = right, L = left, BMC = black machine cancel, PMC = purple machine cancel
 HVY = heavy, FDC = first day cover or cancel, BMSC=black machine slogan
 S-# = plain strip NO #, P= position, BHC=black hand cancel.
- 7) I will not accept phone bids, only mail and email allowed.
- 8) ALL bids must be in the auction director's hand by the closing date and not postmarked on that date!
- 9) If you are mailing bids and have an email address please include it on your bid sheet. And if you are placing bids via email it will be included automatically.
- 10) Bids not conforming to the bidding increments will be lowered to that level.
- 11) Bids with a (+) after them will be used to increase them by one increment only to help break a tie bid.
- 12) BUY BIDS will be accepted, but realize that only one buy bid can win a lot and that will be the first one, and at only one advance over the second highest bidder.
- 13) If you are on the net and would like to see a scan of a lot please email me at PNC3auctions@AOL.com
- 14) If you need to call to ask a question, but NOT to place a bid please call after 7 PM Chicago time at (773) 622 0663.

I would like to thank all the members who have donated lots to the club for this auction. Please bid on these since all proceeds go direct to the club and helps to keep your dues low. Please remember to bid early so you can win those lots you really need for your collection. I will notify you by email if I have your address or snail mail if I don't and mail an invoice with your lots. Please when making payment make you checks out to ME not PNC3 as my bank gives me a hard time when I deposit them.

JOE SEDIVY
 Auction Director
 Phone (773)622-0663
 Email PNC3auctions@AOL.com

Membership

Names of applicants are published for members to review. Any member who questions the suitability of a prospective member should contact the chairperson of the Membership Committee, Janet Gillis, 2485 Falmouth Rd. Fairlawn, OH 44333-4045 with the objection. The committee will recommend for or against membership.

New applicants:

William G. Ruebsamen (1907)
27601 Sun City Blvd #203
Sun City, CA 92586-2266
(951) 301-9360 (Day & Evening)

William C. Weyer (1908)
213 Dover Dr.
Mineral Wells, WV 26150-9671
(304) 489-1121 (Day & Evening)

Robert L. Rocque (1909)
91 W. Ninth St. #112
Clovis, CA 93612-1721
(559) 322-6837 (Day & Evening)
FrenchyRock@aol.com

William Sowers (1910)
1050 Cato Ln #A1
Sturgis, MI 49091
(269) 651-4393
perf7@webtv.net

Stanley Hunter (1911)
6852 Bestel Ave.
Westminster, CA 92683-2510
(714) 894-6365 (Day & Evening)

Loretta Albert (1912)
816 So. 26th St.
Escanaba, MI 49829
(906) 786-9225 (Day & Evening)

Changes of address:

John E. Alberstadt (312)
1001 Flame Vine Ave Apt # 204
Delray Beach, FL 33445
(561) 330-2267 (Day and Evening)
johnnea764@cs.com

J. R. Haislet (985)
1570 Neptune Dr.
Lake Havasu City, AZ 86404-1943

Kenneth Opat (1739)
PO Box 500
Onamia, MN 56539-0500

Michael Albert (1851)
816 So. 26th St.
Escanaba, MI 49829
(906) 786-9225 (Day & Evening)

New/changed telephone numbers:

Jim Havlena (1390) (707) 964-4507 (Day and Evening)

E-mail addresses:

Jeff R. Channell (128)
jeff.channell@sbcglobal.net
Arthur Westneat 1338)
westneat@verizon.net
Robert J. Murrin (1369)
murrin@gte.net

(Continued on next page)

PNC³ meetings and slide shows

A listing of scheduled Regional and Annual Meetings will be published in *Coil Line*.

Until a new Regional Meeting coordinator is appointed, please send notices of meetings directly to the *Coil Line* Editor.

Saturday, Nov. 19 —
CHICAGOPEX, 11 a.m. to 1 p.m. in Conference Room 5. Sheraton Chicago (Northwest) in Arlington Heights, IL. Andy Jakes is the sponsor.

Saturday, Feb. 4, 2006 — Sarasota National Stamp Exhibition at 10 a.m. in the north balcony of the City of Sarasota Municipal Auditorium, located at 801 North Tamiami Trail, Sarasota FL.

May 2006 — Washington 2006, May 27-June 3, Washington, D.C. PNC³ will celebrate the 25th anniversary of Plate Number Coils. Details to be announced. Tentative PNC meeting date is May 27. Volunteers needed to staff club table all eight days of the show.

August 24-27 2006 — Stampshow will be held in Chicago. Details later.

COIL LINE

Published monthly as the journal of the Plate Number Coil Collectors Club, also known as PNC³. Copy must be in the hands of the editor no later than the 15th of the month. The October issue was mailed Sept. 26.

President: Frank Covey, 16 Grandview Dr., Macomb, IL 61455
president@pnc3.org

Distribution: Alan Thomson, P.O. Box 91, Northwood, NH 03261 or mr.snips@verizon.net Mailed under Bulk Rate permit No. 1, Northwood, NH 03261. Contact Alan first about which back issues he has in stock.

He may refer you to Charles Still at 23913 Benton Road, Kirksville, MO MO 63501 for older issues. Please include an SASE. There is a modest charge to cover expenses.

Changes of address: Should be sent to and membership applications are available from Tom McFarland, Secretary, P.O. Box 756, Princeton Jct., NJ 08550 secretary@pnc3.org

Mailing list: Rental of the club mailing list is available. A one-time usage of labels costs \$50. Contact the secretary (above).

Dues: Are \$12 per year (\$17 for First Class mailing of *Coil Line*, \$17 for Canada and Mexico and \$22 for all others) and should be sent to Andrew Jakes, 2303 Horseshoe Ct., Grayslake, IL 60030-9327 treasurer@pnc3.org

Advertising rates: Are \$42 for a full page, \$24 for 1/2 page and \$12 for 1/4 page per issue. A check or money order made payable to PNC³ must be submitted with the advertising copy. All copy should be sent to the Editor, 909 Parker St., Bowling Green, OH 43402-2107.

E-mail - halallen@wcnnet.org

Members are entitled to two free, 40-word ads per year. Word ads are available at 6 cents per word per issue to nonmembers and those members who have used their free ads.

Ads

PNC USED SINGLES, used strips and MNH PS5s. Great prices! Visit <http://www.angelfire.com/ca5/HimesPNCs> or send SASE for details. John Himes, P.O. Box 453 Cypress, CA 90630-0453.

USED COIL PAIRS WANTED prior to Scott 492. NO PNC's or line coils. List what you have and price. John Mahoney, 88 Sherwood VA LA, Unit 155, Coventry, R.I. 02816

PNC USED SINGLES FOR SALE:
9.3 Mail Wagon P/C# 2 \$5.00
9.3 Mail Wagon P/C #3 \$6.25
10.9 Hansom Cab P/C #3 \$35.00
.20 Flag P/C #14 \$25.00
Marvin Klotz, 29 Bay Hill Road, Jackson, NJ 08527

USED PNC & STRIP price list available for .60 postage. Bob Murrin, P.O. Box 10100, St. Petersburg, FL 33733-0100.

Volunteers still needed for Washington 2006

Bob Hubs Smith reports the Ad Committee planning for the Plate Number Coil Collector's Club's efforts at Washington 2006 has heard from a few members willing to volunteer time. The international philatelic extravaganza will run May 27 through June 3, 2006 in Washington, D.C. The year will also mark the 25th anniversary of PNCs.

Volunteers are needed to staff the club's booth (in 2 or 4-hour blocks); the club needs items for a non-competitive exhibit; interesting, rare or unusual items that can be used to prepare a virtual PNC album; and members to give short programs. Contact Bob Hubs Smith at lobohub@earthlink.net or 11 Orchard Rd., Kinnelon, NJ 07405-2730.

Renewal time

(Continued from page 133) information about regional meetings to Harold Brown, our Coil Line Editor.

There are a few 2005 Values Lists left available at the \$15 post publication price. Contact Treasurer Andy Jakes to purchase one of these.

— Frank Covey

Membership

(Continued from previous page)

Deceased:

Fred Gerson (1301)

Recap:

Previous membership count	873
New members	6
Reinstated	0
Resignations	0
Deceased	1
New total	878

All strips VF-XF of 5 for sale (unless otherwise noted)

- 1) 1c Omnibus B Press light tagging error #3. Scott 2225. Price \$17.50.
- 2) Scott #2602 10c Eagle & Shield A 32333 \$225.00. A3333A \$70.00.
- 3) Eagles & Shield broken yellow #1 Complete set of 7. \$350.00.
- 4) Scott 2603a, Eagle & Shield Imperforate PS6 #11111. \$75.00.
- 5) Scott 1904a, 10.9 Precancel strip of 9, #3, rare gap position, \$300.00; strip of 8, #4 rare gap position, \$300.00.
- 6) Scott 2260 B Tugboat #2, PF Certificate, \$225.00.
- 7) Scott #1891 18c Flag, pair of #6 VF, \$700.00.
- 8) Scott #1907, 18c Surrey #1, \$75.00.
- 9) Scott 1908 20c Fire Pumper #2, VF-XF, \$150.00.
- 10) Scott 2523C 29c Flag over Mount Rushmore #7 Toledo Brown, \$125.00.
- 11) Scott #1890 32c 'G' Old Glory A4435, \$195.00.
- 12) C98a Plate Block of 20, Hard to find plate block of 20 Scott Price at \$70.00 40c Mazzei 10 1/2 by 11 1/4 VF.
- 13) Scott 1893B imperforate booklet, plate #1 18c stamps, six 18c, two 6c, vertical imperf. \$70.00. Issued 3/15/84.
- 14) American Bighorn Sheep 20-20c stamps Scott #1949B \$100.00.
- 15) Ameripex Scott #2198. Black omitted. \$50.00.
- 16) Scott 2194c \$1 John Hopkins Plate Block, \$40.00. Sheet of 20 at \$120.00 (Tagging omitted).
- 17) Baseball #855 mint sheet of 50, VF condition, \$75.00.

ADD \$3.85 for Priority Mail.

Raphael Peretz
14719 20th Road
Whitestone, NY 11357-3501

OFFICIAL BID SHEET

- 1] Number in () indicates the number of items in the lot.
- 2] Lots with —— have no minimum bids, ALL OTHERS DO!!
- 3] For precancelled strips if there is a gap it is listed.
- 4] In case of tie bid, the earliest post mark wins.
- 5] All winning bids are one advance over the second high bid.
- 6] Bids not conforming to the bidding increments will be reduced to next level.
- 7] All bids MUST meet minimum opening bid!!!
- 8] R=right, L=left, BMC= black machine cancel, PMC= purple machine cancel, BHC= black hand cancel, HVY= heavy.
- 9] NO PHONE BIDS ACCEPTED!!!
- 10] All bid must be in the auction directors hands by closing date.
- 11] If you bid please be ready to pay your bill within 5 days of your receipt of the invoice. Every auction I have held for the club there has been at least one member who fails at this and that drags the auction closing out sometimes an extra month. Any member from this auction forward who does not comply with this rule will be denied this club privilege of submitting lots and bidding in the club auctions.
- 12] Lots found to be mis-described must be returned within 5 days, or they are yours. Please phone or E-mail first.
(jnjsed717@aol.com)

BIDDING INCREMENTS

\$.25——	4.75——	\$.25			
5.00——	9.50——	.50			
10.00——	49.00——	1.00			
50.00——	97.50——	2.50			
100.00——	495.00——	5.00			
500.00 +	—————	10.00			

Bids must be in auctioneer's hand by Nov. 19

NAME _____ PNC3 # _____

Home Address _____ Home Phone() _____

City _____ ST _____ ZIP _____

SIGNATURE _____
(ALL SHEETS MUST BE SIGNED)

Your e-mail address _____

Please enter the following bids for me in this mail auction.

LOT#	BID	LOT#	BID	LOT#	BID	LOT#	BID	LOT#	BID	LOT#	BID	LOT#	BID
_____	_____	_____	_____	_____	_____	_____	_____	_____	_____	_____	_____	_____	_____
_____	_____	_____	_____	_____	_____	_____	_____	_____	_____	_____	_____	_____	_____
_____	_____	_____	_____	_____	_____	_____	_____	_____	_____	_____	_____	_____	_____

PLEASE CHECK YOUR BIDS CAREFULLY!

Please limit my purchase to \$ _____. Limits under \$50 are respectfully declined. Bid limits will be executed in the order (vertically) that you bid the lots.

Send complete SIGNED bid sheets to:
Joe Sedivy, PNC3 Auctioneer, P.O. Box 410602, Chicago, IL 60641
E-mail PNC3auctions@aol.com