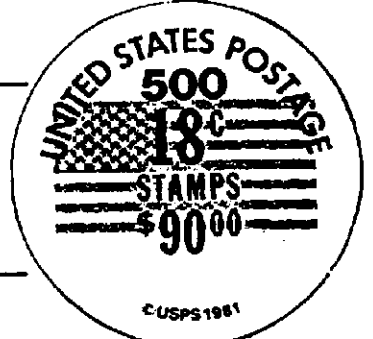


# LABEL MANIA



~ a Newsletter for Collectors of U.S. Coil Labels ~

#2, July, 1989

'Way back when Mania #1 started plopping into mailboxes, one of the Crusty Old Deans of philately put a Lionel Barrymore arm around me and said "Nice work, kid. . . But can you do it again?" It was a close call and a darn long haul but ... we're making this a "Double Issue" to reward your Faith and Patience.

Our thanks to the many of you who have sent in corrections, additions and new discoveries. At least five of you caught my spelling errors; one was kind enough to suggest that "Postal Privatization" might be an intentional, outhouse-oriented pun! Also apologies for not being prompter with personal responses; my paycheck is tied into a willingness to travel ( often for weeks on end ) to places far removed from mail slots, typewriters, indoor plumbing... "But that's another story" said Sheherazade! Frankly, though, I've got to improve on my postal skills to keep up with you all; Mania #2 is going out to more than 100 names!

This issue tackles "Emblems". Six pages covering "Everything We Know, So Far" ( heavy emphasis on "So Far" ! ) We had hoped to be more conclusive, more definitive - especially considering that "Emblems" have been out of print since @1982 - but every firm answer we collar only seems to unleash a whole fresh pack of snarling questions, howling and slobbering for attention.

"Labels Illustrated, part two" covers the known "500"-size items from 5.9¢ through 10.1¢; a big chunk of territory inhabited by some very tough customers. Also a full page of addenda for 1¢ through 5¢ items. We've introduced a few new wrinkles : "Rubber Stamp Dies", "Transfer Dies", "Slug-Modified Labels" and, our #1 headache, "Overprinted Labels". These should guarantee us at least a half-dozen pages of "addenda" in our next issue. It does not get easier, I'm afraid.

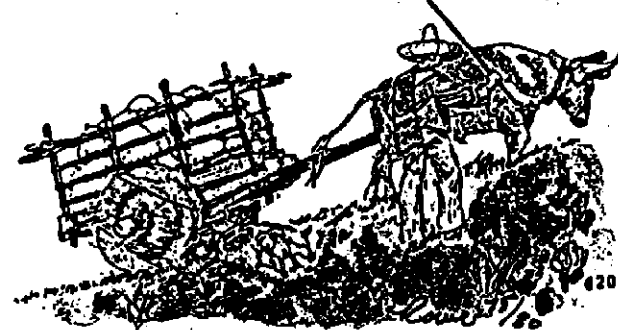
Also two pages of answers to your most frequently-asked questions. We're still fine-tuning our Label System as we go along; your questions greatly help our progress. Also a short round-up of a few Fellow Label Fiends with spares to trade ( others coming, next issue ) and a yen to bypass the dealers. Not that we have anything against "Dealers" ( Pu-Leezel ! ); in fact, our next big project will be a survey of that small, merry band to help you locate all those items no one has "for trade". Stay tuned !


Finally, we have not forgotten "3000 Stamps" items or "Carton Labels". We're concentrating, for now, on "500"-size because all of you share that interest ... and because it also gives us more time to work out the Coding bugs in the very complicated "3000 Stamps" series.


As always, we rely on the Kindness of Strangers ( and you do have to be a bit "stranger" to share in this "Stella Desire"! ) ( very recherche pun! ); deep salaams and shameless grovelings to Gerry Clark, Don Eastman, Scott Hoppis, Mike Lipson, Doug Parks, Gene Paquette, Bob Rowe, Rich Sitron and Phil Collins ( my local Postal Clerk, not the Pop Star! ) who all deserve a big vote of thanks !

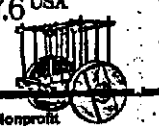
In the "Why Didn't I Think Of This?" Department :  
This lovely item - the perfect marriage of FDC, PNC and confirmed "500 Stamps" label - was sent in by the artist-creator Bob Rowe. You'll find out more about Bob and his handiwork on page 9, this issue, in our first "Traders' Network".


## Carreta




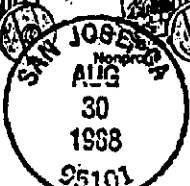
Carreta1770s  
7.6 USA  
  
Nonprofit

Carreta1770s  
7.6 USA  
  
Nonprofit

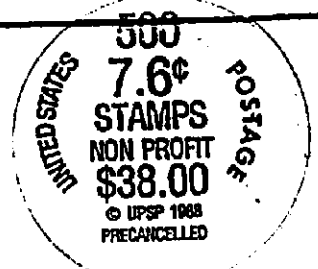
Carreta1770s  
7.6 USA  
  
Nonprofit

Carreta1770s  
7.6 USA  
  
Nonprofit

Carreta1770s  
7.6 USA  
  
Nonprofit



FIRST DAY OF ISSUE



# All About Emblems

In the Beginning, when the Transportation/PNC coil series was still in planning stages, someone at the Bureau of Engraving and Printing hit on the idea of enhancing these issues with a completely new kind of label - one that would feature an illustration of each new coil's distinctive artwork along with the standard coil data information. The plan originally envisioned a complete series of these "Emblems" with label sets for every new coil value but, though preliminary models were prepared for several issues, the high cost of producing these "non-essentials" forced the B.E.P. to scale back to First Class coils only.

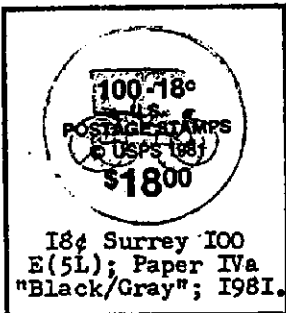
Emblems for 18¢ Surrey and 20¢ Fire Pumper faithfully replicated their coils' designs, but those for 18¢ and 20¢ Flag bore only a stylized "Old Glory", eliminating "Seascape" and "Supreme Court" artwork. Label Imagery was adapted from stamp models or die proofs, enlarged or reduced to fit label dimensions, then screened into photogravure-style color dots. Coil Data followed the typographic styles of either "Arch" Designs, on 3000- and 500-Stamp labels, or "Five Lines" Design, on 100-Stamp labels. Emblems were printed in only one ink; images appear paler than the solid lettering because the color-dot screen-process allows the "white" label paper to show through.

Current "rubber stamp" labels are produced on line with coil wrapping machinery. The complicated "Emblems" were printed separately, in batches made to Press Room estimates. This method occasionally caused Emblem shortages and led to the use of temporary, non-Emblem "substitute labels". Batch printing also seems responsible for minor variances in label paper and a number of very interesting color shades and design shifts.

## 18¢ Surrey

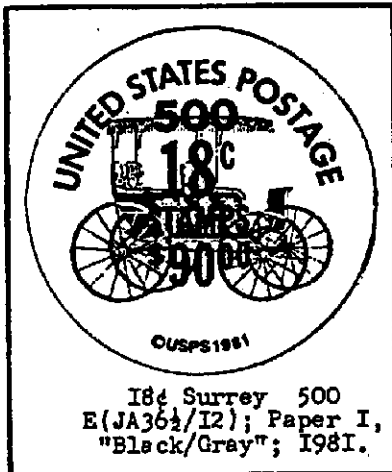
Scott #1907. Cottrell Press, paired plates #1/2, #2/8, #3/4, #5/6, #7/8, #9/10, #11/12, #13/14, #15/16, #17/18. "Emblem" labels were printed for all three roll sizes. The Surrey image, probably taken from a stamp model, was slightly modified to enhance clarity ( in particular, note where the wheels pass across the carriage! ). Labels were printed in a single operation of a gravure (?) press.

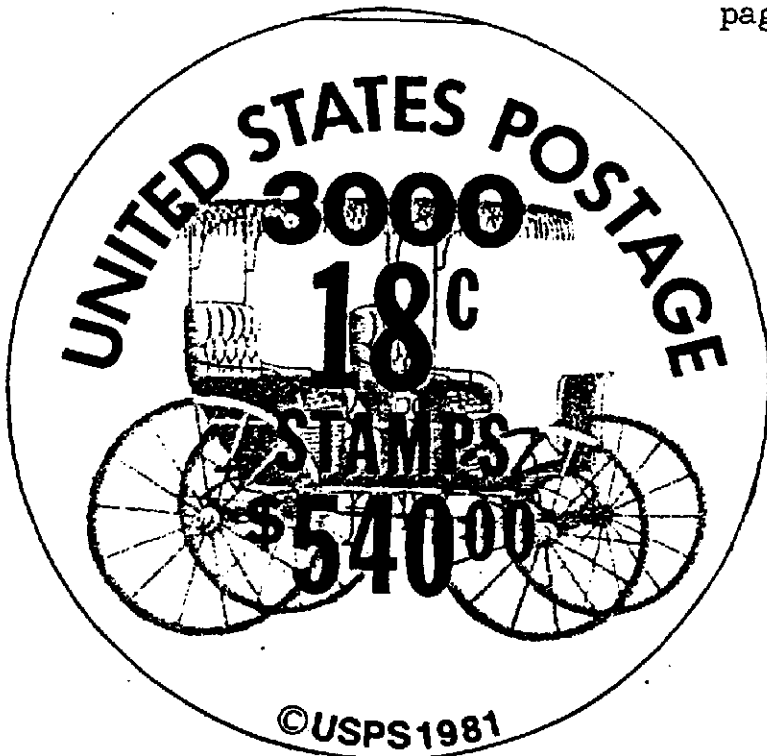
"100 Stamps" : These labels, measuring @25mm in diameter, were printed on a stock similar to Label Paper Type IV but slightly thicker and completely lacking surface gloss; we provisionally call this "Paper IVa". Coil Data was printed in five horizontal lines of type, a configuration new to our Label Identification Code system, but familiar to collectors of the "Americana" and "Liberty" coil series. This Design is LIC coded "5L" ( for "Five Line" ) when appearing alone; since Surrey labels prominently feature an image, the LIC prefix "E" more correctly identifies these as "Emblems". Labels were printed in Olive-Black ( Pantone 5605 U ) but we continue to list the color as "Black/Gray", acknowledging that the typography appears to be "Black" and the image appears to be "Gray". "Pale" and "Dark" versions are known, caused by small changes in printing pressures or ink wiping, affecting both image and typography to equal degree; though fascinating, these are hardly "Major Varieties"! There are also minor variances in paper tone ( normally "off-white" ) and occasional traces of very low fluorescence, probably caused by the addition of bleaching compounds during pulping. Blank labels have been reported on rolls of this size, but non-Emblem "substitute labels" are not known. These Surrey "Emblems" survived in healthy quantities and should be easy to acquire. It seems likely that all ten Surrey plate pairings were produced in 100-subject rolls but, at present, we can only confirm plates #2/8, #5/6, #9/10, #11/12, #13/14. Can you confirm others?



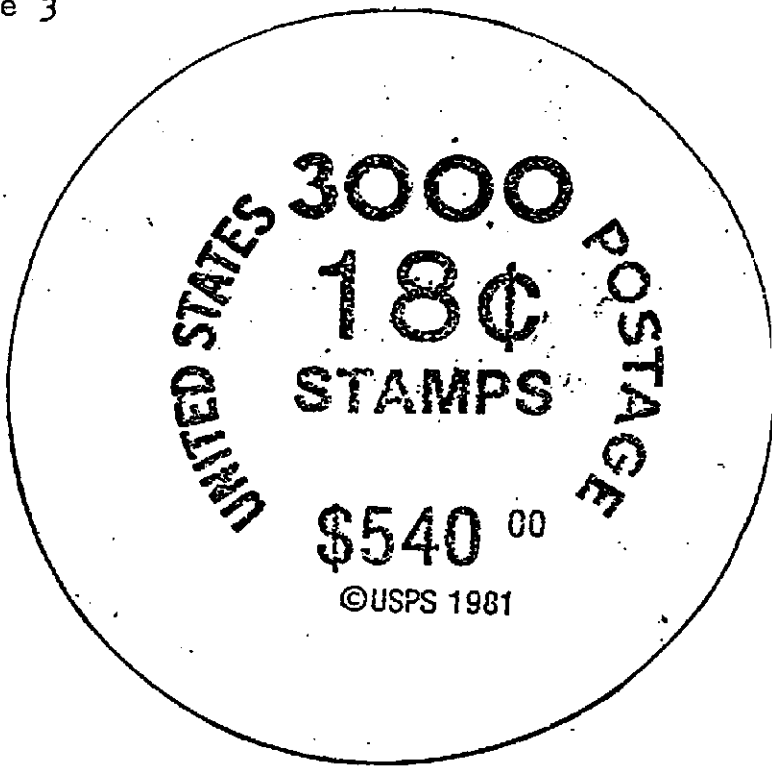
acquire. It seems likely that all ten Surrey plate pairings were produced in 100-subject rolls but, at present, we can only confirm plates #2/8, #5/6, #9/10, #11/12, #13/14. Can you confirm others?

"500 Stamps" : These are "Jumbo" ( oversized ) labels measuring @45mm in diameter; stock is Label Paper Type I with dull, off-white face and thick, waxy, heat-activated adhesive on reverse. Coil Data is printed in standard "Arch Design" configuration ( "U-E:@36mm; @:@12mm" ) though, as is the case with all Emblems, the LIC prefix "E" takes precedence and is sufficient for identification. Labels were printed in Black ( Pantone Blk. on Blk. U ) but we list the color as "Black/Gray", recognizing that the image does appear to be "Gray". All Surrey "500"s ( and many other "Jumbo"s as well ) have a short, straight crease cutting off a 20- to 50-degree arc across the label face; on cleaned labels, this crease often matches a thin scratch in the wax-like adhesive. We recently contacted the Fasson Paper Division of Avery, Inc., a leading manufacturer of pressure-sensitive adhesive papers, for a few new clues to the label puzzle. While official spokespersons would neither confirm nor deny supplying papers to the B.E.P., a regional sales representative did identify examples of our Label Papers II and IV as "definitely Fasson" and fluorescent Paper III as "probably ours". Label Paper I was "unfamiliar", but that odd crease ( noted above ) was readily explained as a "Peel Tab", impressed during scoring, to facilitate removal of cut labels from sheets of backing paper. Like their "100 Stamps" counterparts, Surrey "500"s show minor paper toning and slight variances in color intensity - but no genuine "Varieties". Neither blanks nor non-Emblem "substitutes" have, so far, been found sealing rolls of this size; good "Emblems" are still fairly easy to find. Surrey "Emblems" have been confirmed on 500-subject rolls bearing plates #1/2, #2/8, #3/4, #9/10, #17/18. Can you confirm any other plate pairings?





18¢ Surrey 3000  
E(JA84½/28); Paper I, "Black/Gray"; 1981.



18¢ Surrey 3000 (#2/8)  
JS63/2I½; Paper I, Gray-Black; 1981.

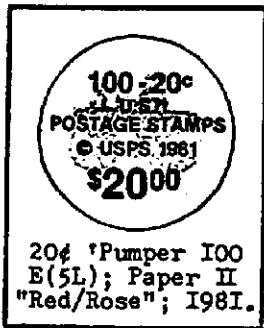
"3000 Stamps" : These are "Jumbo" labels, measuring @98mm in diameter, printed on Label Paper Type I. Coil Data is printed in "Arch" configuration ( "U-E:@84½mm; ©:@28mm" ) but the LIC prefix "E" correctly identifies these as Emblems. Labels were printed in Black ( Pantone Blk. on Blk. ) ink but are coded "Black/Gray" in admission that the Surrey image appears printed in "Gray". These labels feature the short "Peel Tab" crease as noted for Surrey "500"s. There are minor variances in paper tone and color intensity but no bona fide "Varieties". The example shown above was cut sufficiently off-center ( nearly a freak; Surrey Emblems are normally very well centered ) so that a fragment of the "frame line" - used to guide label scoring - is just visible, at top. Clean copies of this Emblem are becoming scarce; nibbled rims, small tears and surface puckers are unfortunately "normal". We have little hard data for this label and can only confirm it on 3000-subject rolls of plates #2/8, #9/10, #15/16, #17/18.

A non-Emblem "substitute" label, found on a roll of plates #2/8, is shown at top right. This "Jumbo" was printed on a form of Label Paper I with a faint surface pattern of "linen" mesh lines. The Design is a "Split" with D-T span of @63mm and a ©-line length of @21½mm; lettering is "small", numbers are "solid", the "3" of "3000" has a pointed center stroke. Where possible, the B.E.P. tried to print "substitutes" in the same basic color as the "original" Emblems; this label was printed in a tint of Pantone Process Black which, thanks to under-inking, here appears "Gray-Black". So far, this is the only confirmed Surrey "substitute" in 3000-roll size; do you know of any others?

### 20¢ Fire Pumper

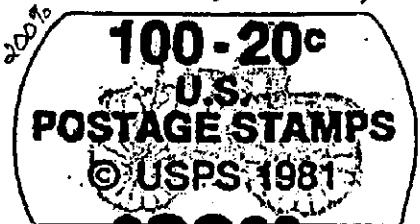
Scott #1908. Cottrell Press, paired plates #1/2, #1/5, #3/4, #5/6, #5/13, #7/8, #9/10, #11/13, #12/14, #15/16. "Emblem" labels were printed for all three roll sizes. The Fire Pumper image, probably taken from a stamp model, was "softened" by eliminating heavily engraved lines and muting remaining details. "3000 Stamps" Emblems were printed in a single operation of a gravure (?) press; "500 Stamps" and "100 Stamps" Emblems were printed in TWO steps, causing design shifts and color anomalies.

"100 Stamps" : These labels, measuring @25mm in diameter, were printed on Label Paper Type II. Coil Data is printed in five horizontal lines of type ( "5L" ); the LIC code letter "E" correctly identifies these items as "Emblems". Labels were printed in Dark Rosine ( Pantone I92 U ). This thick, heavy ink is very unstable, easily altered both by natural or chemical agents; items exposed to direct sunlight can fade to "Orange" in a few weeks and great care must be taken with Naptha-based cleaning solvents. Labels are listed as "Red/Rose", a rough guide to the most common apparant colors.



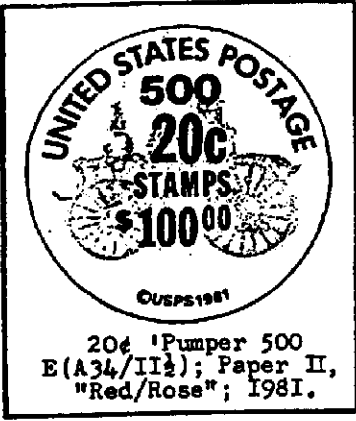
20¢ Pumper 100  
E(5L); Paper II  
"Red/Rose"; 1981.

Labels were printed in two separate operations, causing variations in Image-to-Data registration and coloration. The example at left seems ideally centered, based on comparison with other Emblems; note that the rear wheel hub is bracketed between "©" and "U". At right is an enlarged portion of a misregistered label; the notches in the wheel rims may have been cut to fit around parts of the Price Line. Some labels also have nicked letters or short flanges in the typography due, possibly, to uneven inking or after-print chipping.



We have also seen examples with extremely pale "image" under normal-toned lettering; a "Missing Pumper" variety is possible! Flyspeck enthusiasts should have a field day with these relatively common items. Blank labels are known, and we have heard that some late printings were sealed in plastic "Bubble Packs". Fire Pumper Emblems are confirmed on 100-subject rolls of plates #1/2, #1/5, #3/4, #5/6, #5/13, #7/8, #9/10, #11/13, #12/14, #15/16.

"500 Stamps" : These labels measure @38mm in diameter, the standard size for all "500"s except the small group of oversized "Jumbo" labels produced in 1981-82. Like their "100 Stamps" counterparts, these Emblems were printed on Label Paper Type II. Coil Data is configured in an "Arch" Design ( "U-E:@34mm; ©:@11mm" ) but the LIC begins with an "E" for "Emblem". Labels were printed in a very stable Vermillion ink ( Pantone 485 U ) with negligible variances in tone or intensity. "Red/Rose" is a good index to apparent label colors.



20¢ 'Pumper 500 E(A34/II½); Paper II, "Red/Rose"; 1981.

These Emblems were printed in two separate steps; a 15X magnifying glass is strong enough to show patterns of Image color-dots underneath the solid Data overlay. Shifts in Image-to-Data registration are common but far less severe than on the 'Pumper "100"s. Ideal centering is seen in the example at left; note that the final "O" of "500" sits squarely atop the boiler cap; also compare the positions of "20¢" here, and on the "3000" Emblem below. The enlargement at right is of the most extreme image-displacement noted to date; we'd love to see something much worse! Paper toning is very common; we have reports of



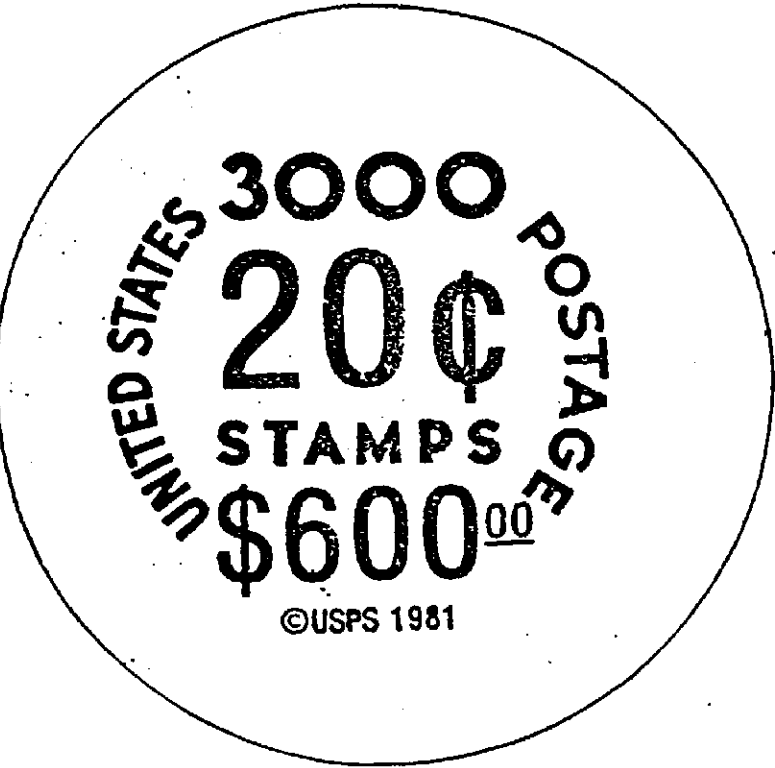
a "yellow" paper, probably a severe case of ageing. Blank labels have been reported but non-Emblem "substitute" printings have not been seen on rolls of this size. 'Pumper Emblems are confirmed as sealing 500-subject rolls bearing plates #1/5, #5/6, #11/13, #12/14, #15/16. Can you confirm any other plates under this Emblem?

"3000 Stamps" : These are "Jumbo" labels, measuring @98mm in diameter, printed on stock similar to Label Paper Type IV but slightly thicker and lacking surface gloss. This is the same stock used on Surrey "100"s, provisionally termed "Paper IVa". Coil Data is printed in "Arch Design" configuration ( "U-E:@85mm; ©:@28mm" ) but labels are LIC coded "E" for Emblem. Color is Bright Red ( Pantone 032 U ) but we list "Red/Rose" - the apparent hues - for convenience's sake. There are minor variances in paper tone and color intensity but no genuine varieties. There is no "Peel Tab" crease on these Jumbos; that feature seems restricted to Label Paper Type I, only. We have, however, seen as many as six labels stuck together in a perfectly centered sandwich on the same coil wrapper - a nice Collector Bonus, courtesy of the B.E.P.! These large 'Pumpers, probably the most attractive labels ever produced, were once in very short supply; too many were originally discarded with other "Post Office trash"! Fortunately, a healthy stock of retired 'Pumpers, in all three roll sizes, was put back on sale in 1988 to meet new 2nd ounce rates - and give us all a second chance! Unfortunately, this reprieve has only lightly expanded our list of confirmed plates; at present, only 3000-subject rolls bearing plates #1/2, #3/4, #5/6, #5/13, #9/10, #15/16 are known sealed with "Emblems". Can you supply confirmation for other plate pairings?

Non-Emblem "substitute" labels were also used to seal "3000 Stamps" rolls of 20¢ Fire Pumper. These "Jumbo"-sized items were printed on Label Paper Type I; most have a faint pattern of "linen" mesh lines and a short "Peel Tab" crease. Coil Data appears in "Split" Design with D-T span of @63mm and a ©-line length of @21mm; lettering is "small", numbers are "solid", the "3" of "3000" has a pointed center bar. This is the same basic Design used on the Surrey "substitute 3000", hinting that these ( and other early Jumbo "Split" ) labels may have been developed from a common generic prototype with blank slots for later insertion of coil denomination and roll sales-price. Two label colors are known: a deep Plum has been confirmed on rolls of plate #3/4; Bright Purple labels sealed rolls of #5/6 and #9/10. Still another 'Pumper "substitute" - though with a startling difference - is described in "Mysteries of the Beep!".



20¢ Fire Pumper 3000 E(JA85/28½); Paper IVa,



20¢ Fire Pumper 3000 JS63/21½; Paper I, Plum; 1981. (#3/4)



20¢ Fire Pumper 3000 (#9/10)  
JS63/23; Paper I, Bright Purple; 1982.

were carbon copies of this "Pumper" label - but in Blue or Black ink. So... Elementary, my Dear Watson! 'Pumper #9/10 went to press only three weeks before Consumer Ed; label dies for both were probably in the Press Room. When "Emblems" ran out, a pressman slapped a "20¢ Substitute" label die on line, inked it up in "Pumper Red", and let 'er rip! How long did it run before somebody saw the date?! We fear this is a genuine rarity and doubt we'll see another but ... Has anyone else seen this little beauty?

Our next Mystery comes to us from a reliable source who insists on remaining anonymous. This is not a label, not even a label proof, but is described as "an unfinished working model of the canceled Electric Auto" Emblem! The image is an enlargement taken, most likely, from an early plate proof of the stamp.

Modification has begun. Windows, trim and fenders are crisper; door details have been "muted" in preparation for color-dot screening. The Data overlay is virtually identical to those used on 18¢ Surrey and Flag Emblems; note the "raised ¢", later "dropped" on the 20¢ Emblems. Only that odly-serifed "i" looks unfamiliar.

We are reminded that early "500" labels for 2¢, 9.3¢, and 10.9¢ coils were similar "Arch" Designs in steel-die prints; were these "remaindered" overlays from other canceled Emblem trials?

The hexagon surrounding the model may be nothing more than a simple way of marking maximum dimensions for the artist, but these lines also perfectly match the segment of "frame line" seen on our mis-cut Surrey. An hexagonal layout would maximize paper use if our Emblems were, as suspected, printed in multiple-subject sheets.

This is only a Xerox of a Xerox; we can't assume that the scale is 1:1. But it does seem likely that the final version would have been "Jumbo"-size. We have been told that "Deep Blue" was provisionally assigned to this "almost Emblem" - the same color later used on most of the drab "rubber stamp" labels hastily concocted to seal rolls of 17¢ Electric Auto.

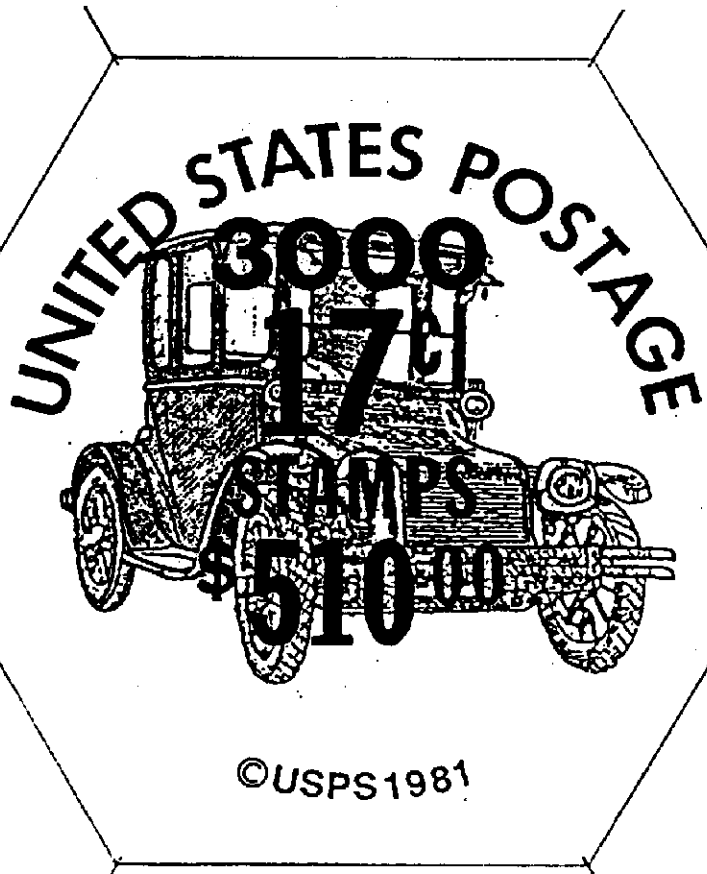
The Good News: this "Emblem" was never printed. The Bad News: at least 20 different "rubber stamps" were!

... Happy Hunting !

This Jumbo label was found on a full roll of 20¢ Fire Pumper, plates #9/10, in Darlington, S.C. Printed in Bright Purple ink on faintly patterned Label Paper Type I, the Design ( we've sketched in some of the fainter details ) is a dead ringer for the 'Pumper "substitute" shown on the preceding page - except for the 1982 copyright!

Copyright dates have been changed on labels before, usually announcing a completely new coil issue or, less often, a change in label Design. 3¢ "500" labels were originally dated "1981", this to reflect the B.E.P. "Series of 1981" designation for all "Transportation" coils; later labels bore "1983", the real Year of Issue. When Conestoga replaced Handcar, the date was changed to "1988". A few labels - 7.1¢, 8.5¢, 11¢ Caboose - are dated one year earlier than issued, demonstrating normal delay between stamp copyright ( to which the date refers ) and stamp release. ...But this label's altered date fits none of these scenarios!

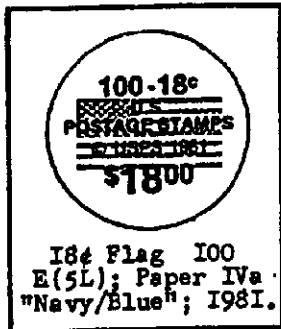
We have one plausible theory. In 1982, three different First Class coils were being printed: 20¢ Flag, 20¢ 'Pumper and 20¢ Consumer Education, all with "3000 Stamps" formats. Flag labels, once the small stock of "Emblems" was depleted, were designed to prominently feature the word "FLAG". All 'Pumper rolls should have been sealed with "Emblems"; temporary shortages were responsible for the unplanned "substitutes". We have seen few Consumer labels in any size ( easily scarcer than their PNCs! ) but those we have seen ( or have had reported - and P.S.: we definitely need data!!! )



## 18¢ Flag with Seascape

Scott #1891. B Press, single plates #1, #2, #3, #4, #5, #6, #7. "Emblem" labels were produced for all three roll sizes. The image, probably taken from a stamp model, replicates the issue's unorthodox "Old Glory" (drawn twice as long as it is wide) but does not include the "Seascape" vignette. Labels were printed in a single operation of a gravure (?) press.

"100 Stamps" : Like the Surrey "100"s, these @25mm-wide labels were also printed on a slightly thicker, dull-surfaced stock variant which we are provisionally terming "Label Paper Type IVa".



Coil Data is presented in five horizontal lines - "5L Design" - but, since these labels bear a small Flag image, the letter "E" prefixes their LIC, thus accurately indicating "Emblem Design". Labels were printed in a deep Navy Blue ink ( Pantone 280 U ), color-coded "Navy/Blue" as a simplified expression of apparent label tones. No genuine "Varieties" have surfaced, so far, but versions with "Pale" or "Dark" tints ( caused by small changes in printing pressure and/or ink wiping ) are common and nicely collectable! Though paper toning is minimal, labels showing an unusually strong fluorescence have been reported. Blank labels - some with value or price penciled in - have also been seen on rolls of this size, but non-Emblem printed "substitutes" were not produced. These mini-labels were saved in healthy numbers and should be easy to find. "100 Stamps" rolls were likely made from all seven Flag



plates but, at present, we can only confirm these labels on rolls of #1, #2, #4, #5. Do you know others?



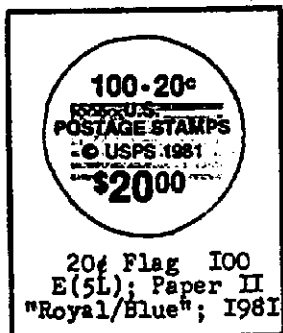
"500 Stamps" : These oversize "Jumbo" labels ( measuring @45mm in width ) were printed on Label Paper Type I with dull, white obverse and a thick layer of wax-like, heat-activated resin on reverse. These labels also feature a short "Peel Tab" crease across the face, usually matching a thin, shallow groove in the adhesive. Coil roll Data was printed in "Arch Design" configuration ( "U-E:@36mm; @: @12mm" ) but, following standard procedures, these labels are accurately LIC noted with a simple letter "E" for "Emblem". Labels were printed in Blue ink ( Pantone 301 U ). Thanks to dot screening, the Flag image seems printed in "Cobalt" - which explains why we continue to list "Blue/Cobalt" as this Emblem's apparent hues. There are no significant "Varieties" though subtle variances in tint and paper tone are quite common. I8¢ Flag and Surrey Emblems were designed and printed only days apart, which explains their similarities of paper, configuration and overall appearance. Non-Emblem "substitute" labels were not prepared for this roll and very few "blank" labels have been reliably reported. This particularly lovely Emblem is becoming increasingly scarce; not nearly enough were saved, and locating a choice, clean copy has become a bit of a struggle. If you haven't done so already, pick up a few today! Though we believe that all seven Flag plates were used to produce "500 Stamps" rolls, we can only confirm this Emblem on rolls bearing plates #1, #2, #3, #5. Can you confirm others?

"3000 Stamps" : "Emblem" labels do exist for I8¢ Flag in this roll size, but they are so scarce that we have been unable to locate even a Kerox of one for this "All About" article! Our earlier, badly organized records roughly indicate that these were "Jumbo" labels ( @98mm in diameter ) printed on Label Paper Type I ( dull face, "waxy" reverse ) with a short "Peel Tab" crease. Coil Data was configured in an "Arch" Design ( probably the same "U-E:@84mm; @: @28mm" used on the contemporaneous "Surrey 3000"s ) in "Medium Blue" ink - a tone close to that used on the I8¢ Flag "500"s. The overall appearance was noted as being identical to - probably used as a model for - the latter 20¢ Flag "3000 Stamps" Emblem. We have no additional data to offer and earnestly ( urgently! ) solicit your much-valued input!

## 20¢ Flag with Supreme Court

Scott #1895. B Press, single plates #1, #2, #3, #5, #11, #13, #14, #14 Precanceled ( Scott #1895e ). ALSO: C Press, single plates #4, #6, #8, #9, #10, #12. "Emblems" were produced, in all three roll sizes, to seal some rolls of plates #1 through #6. The Flag image - basically, the whole label - was directly modeled on the earlier I8¢ Flag Emblems. Gravure (?) press, in probably TWO separate steps.

"100 Stamps" : These labels, measuring @25mm in diameter, were printed on Label Paper Type II. Coil



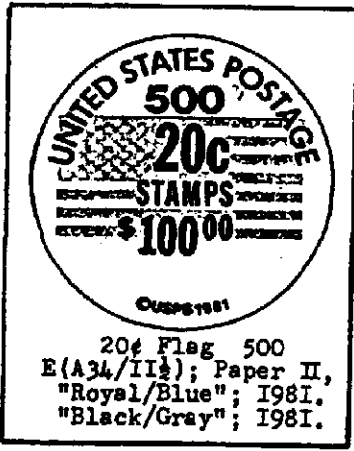
Data was printed in five horizontal lines of type ( "5L" ); the LIC code letter "E" sufficiently identifies these items as "Emblems". Labels were printed in Royal Blue ink ( Pantone 287 U ) which we color-code "Royal/Blue", acknowledging that the Flag image appears inked in a paler tint than the Data. Though we believe this item was printed in two press operations ( Flag first, Lettering next ), no significant image-to-data shifts have been observed, so far, as have on the 20¢ Firepumper "100 Stamp" Emblems. "Pale" and "Dark" versions, though minor, do exist; paper toning is almost nonexistent. In early 1982, the B.E.P. began sealing coils of 100 in hard, plastic "Bubble Packs" whose embossed information rendered printed labels obsolete. It seems likely that all of the admittedly small number of 20¢ Flag "100"s we have examined come from a single "batch" printing - which would also explain the unusual lack of Variety on this Emblem. These labels are moderately scarce and



can only be confirmed as having sealed rolls bearing plates #2 and #3. Do you know of others?

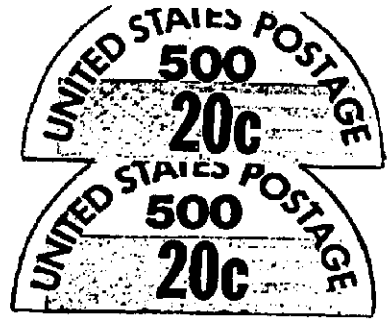


"500 Stamps" : These labels, measuring @38mm in diameter, are printed on Label Paper Type II. Coil Data is arranged in an "Arch Design" configuration ( "U-E:@34mm; @:@112mm" ) though the label is LIC coded with an "E" for "Emblem". These items were printed in two separate press passes with resulting Image-to-Data misregistration. Though relatively minor, these printing shifts attract considerable attention by being so easy to spot: the Flag "horizon" moves up and down between "500" and "20¢". The example at left is assumed "ideally" centered; at right, two enlargements showing average "Rise" and "Fall". Paper toning is very common, abetted by age and adhesive migration; "cream-" and even "yellow-tinted" labels have been reported.



20¢ Flag 500  
E(A34/II½); Paper II,  
"Royal/Blue"; 1981.  
"Black/Gray"; 1981.

Label color is a problem; two different inks - suggesting two separate printings - were used. Royal Blue ( Pantone 287 U ), coded "Royal/Blue", has been found sealing rolls of plates #1, #2, #3. Labels coded "Black/Gray" were printed in a Blue-Black ink ( Pantone 534 U ) which appears "Black"; these are confirmed on rolls of plates #4 and #6. We lean towards a theory that the "Royals" sealed only B Press products, with "Blacks" restricted to C Press printings, but the evidence supporting this is inconclusive, so far.



"Emblems" were canceled during the printing of plate #5 and replaced by "rubber stamp"-type "substitutes".



20¢ Flag 500  
A25½/20½; Paper II,  
"Blue"; 1981. (#5)  
ALSO: "pale Blue"  
:: "Gray"



20¢ Flag 500  
A21/12½; Paper II,  
"Blue"; 1981.  
ALSO: "pale Blue"  
:: "Green-Blue"  
:: "Gray"



20¢ Flag 500  
S25½/12½; Paper II,  
"Blue"; 1981.

"3000 Stamps" : These are "Jumbo" labels, measuring @98mm in diameter, printed on stock similar to Label Paper Type IV but slightly thicker and lacking surface gloss. This is the same paper used on 'Pumper "3000"s, Surrey and 18¢ Flag "100"s - probably a special gravure stock - which we provisionally term "Paper IVa". So far, only "Emblems" have regularly appeared on this hybrid stock but left-over paper may have been fed into parts of latter "rubber stamp" label printings. Coil Data appears in "Arch Design" configuration ( "U-E:@85mm; @:@28½mm" ) though the labels are LIC coded "E" for "Emblem". Color is Deep Blue ( Pantone 540 U ) coded "Black-Blue/Gray-Blue" in our attempt to match appearances to color grades. There are small variances in paper tone and color intensity; no "Peel Tab" crease, image shifts, bona fide Varieties of any kind. This is a very scarce label confirmed, so far, on rolls of plate #1 only; can you confirm it on any other plates? The "rubber stamp substitute" label, shown below, is one of at least four different designs that swiftly replaced the "Emblems" on this roll size.



20¢ Flag 3000  
E(JA85/28½); Paper IVa,  
"Black-Blue/Gray-Blue"; 1981.



20¢ Flag 3000  
S64/21½; Paper II.

" ... Here Be Dragons ... "

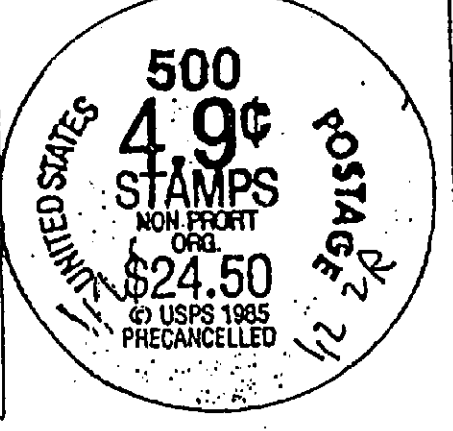
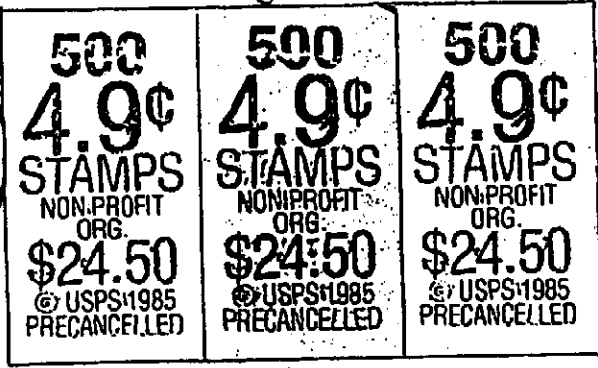
When medieval cartographers mapped their universe, they drew on every source. Local features swelled in size to please ( and reassure! ) the Home Town Crowd. Merchant Traders and Holy Sages provided routes to distant cities and important pilgrim shrines though smaller villages were omitted, rivers accidentally misplaced and massive mountain ranges hazily sketched in. Continental outlines and shapes of off-shore isles were borrowed from Authorities as antique as Ptolemy of Alexandria or Pausanius "Philogeia" but, as distances increased and proven knowledge decreased, scribes were forced to draw on legends from the Bible and the Conquests of Alexander. At the farthest margins, where "Authorities" had never gone, imaginations placed the fabled Lands of the Amazons, the Men with Three Eyes, the catch-all "Here be Dragons" !

Our Labels Study is going through a "Medieval" phase of its own. What we know is mainly local; what we don't is a veritable Trip to Cathay! We're furiously pumping Traders and Sages for tales of distant lands and borrowing thoughts and theories from established philatelic Authorities. We're trying to keep "invention" to a minimum, but sometimes rumor tempts us into premature claims. We create ourselves as we move along, twisting and turning in search of a clear beacon-guide, striving towards a "Renaissance" while trying to steer clear of the Edge of the Earth, the Forest Perilous, the "Here be Dragons" bit.

Slowly, slowly, slowly, the frontiers do roll back. Marginal notations become Keys to great Truths and even the B.E.P. is grudgingly giving up secrets! Your PNC Study Group is gradually piecing together this enormous jigsaw puzzle, trading curious bits, finding new fragments, beginning to see familiar shapes and recognizable outlines. And you are definitely helping! Congratulations all around! ...But don't sheathe your swords just yet! ..."Dragons" breed prodigiously!

Labels Illustrated, Part One, covered the two known forms of 4.9¢PC "500" labels plus the "Spur in 9" flaw; at the time, that's all we had to offer. Since then, the mails have brought in several new finds ... and lots of Dragons' Teeth questions! First, the "Spur" is now known in at least three different lengths: a short, stubby prong; the longer, pointed "Spur" ( illustrated in Mania I ); finally, a long chisel bar. Chances are, even more forms/lengths will turn up since - if we are correct in assuming that these labels were printed from a "Rubber Stamp" die - the flaw was probably caused by a small tear in the soft rubber which progressively grew with continued use. All "Spur" labels contain other flaws : ghostly "exclamation marks" in "NON-PROFIT" and "USPS 1985", small blobs in "\$24.50", a hairline crack across the bottom of "\$". Are any of these more collectable/less desirable OR do we have to round them all up to be complete?

~ all items enclosed to @ 135% ~



4.9¢PC 500  
"Original Die" : S29/I2  
Paper II : "Blue"  
Paper III : "pale Blue"

"Short" "Medium" "Long"  
"Spur in 9" Flaw Variations  
( with minor marks & blobs )  
all on Paper III : "pale Blue"

4.9¢PC 500  
"Transfer (?) Die" : S29/I2  
Paper II : "dark Blue"  
Paper III : "dark Blue"

Next, a completely new variety: Here, "4.9¢" seems rooted to "STAMPS", no visible break between the lines of type. The typography seems a lot "fuzzier" but the spacing is identical, no change in dimensions compared to the original configuration. Could this be a copy of the original "Rubber Stamp"? ... A sort of "Transfer" Die? Labels from this "die" bridge Label Papers and Plate/Gaps; on Label Paper II, it sealed rolls of plates #3/4, Gap II; on Paper III, it covered plates #1/2, Gap 2R; ink tint is "dark Blue" on all. In summation, 4.9¢PC "500" labels now come in three "Rubber" dies, on two Label Papers, in three tones of "Blue", with several variations of "Spur in 9". Quite a nest of "Dragons" !

Many of you have taken our Label Paper Types very much to heart. I wish we could reward your efforts with a clearer picture of their occurrence - When, Where, Why - or a more logical rationale for tracking them down. Instead, we're increasing your burdens with even more Label Paper "variations": the Type IVa so far restricted to "Emblems", and the "linen"-patterned form of Paper Type I noted on some Jumbo "3000" rubber stamp "substitutes". We originally believed that only a few labels had been printed on more than one paper stock and thought we could eventually cover the whole matter with a footnote or two in a future "Labels Catalogue"; subsequent study has shown that at least half of all coil values have labels printed on two ( sometimes three! ) different papers. Like many other B.E.P. quirks, we doubt there was any true purpose to the paper changes, but we hope to use them to help work out patterns of label production and unravel the sequence of Precancel Gap positions. This is one Mega-Dragon of a problem, under attack by several members of the PNC Study Group; Label Papers provide new ammunition! A separate study, headed by Richard Nazar and Kim Cuniberti, examines Coil Paper Types; their terminology is quite similar to ours and could easily cause confusion so ... Please remember to keep the two "Paper" studies separate !

Color - more precisely, accurately listing color - is another major fire-breathing Beastie! As long as we dealt with only simple colors ( Red, Blue, Green ) in simple levels of intensity ( "pale", "average", "dark" ) we could generalize with impunity. But lately, we're encountering compound colors ( Blue-Green, Blue-Gray ), single labels that seem printed in two distinct tones ( see "New Discoveries" for I#, 3.4¢ ), and inks that are definitely subject to chemical/natural alteration. Labels are not Security products,



not in the same high-tech league as Stamps and Currency; we're getting the distinct impression that our labels are probably printed with the cheapest inks and Press Room left-overs available.

The Pantone ( Letreset ) Color System is receiving a lot of attention, mostly because the B.E.P. has begun releasing new-issue color data using Pantone System codes. These Codes are very precise; a separate number is assigned to each shade ( combination of primary colors ) and tint ( shade plus or minus white ). The PNC community has started using Pantone to pick out the handfull of coil color errors, and we've been asked if we could also use Pantone to differentiate the numerous label tones. Yes and No. A small number of early labels - the "Emblems" and most steel-die "Arches" - were produced with enough color consistency to give us accurate Pantone System codings. But most labels were so unevenly printed - "apparent" tints, tones and hues running into the dozens - that it is easier to list them by vaguer "Gibbons Colour" names, sacrificing clinical accuracy to practical terminology. On the side, we are keeping track of label tints by Pantone to give us an idea of the average color value for each label type.

While we're in the area, we're currently conducting trials on the long-term effects of sunlight and of the best known "stripping" agents, Ronsonol and Bestine, on label inks. We've sacrificed a dozen old labels to "The Cause", soaking the top third in Ronsonol, the bottom third in Bestine, and exposing the whole to direct sunshine. The GOOD news is that both chemical solvents evaporate too quickly to affect inks. The BAD news is that strong sunlight quickly reduces some "Reds" ( I# 500's, Pumper "Emblems" ) to a garish "Orange" and bleaches "Greens" ( especially the 5¢ Motorcycle "500's" ) to sickly "Lime" hues. A full report will be printed here as soon as the whole range of trials has been completed.

"Condition" and "Scarcity" are closely related Monsters with very sharp fangs! Few labels are evenly inked, perfectly centered or virginally intact. Older items, especially those from short-lived fractional values, are "tough" in any condition as are the equally scarce Overprints, Trials and Experimental Labels of the early '80s. Scarcity is complicated by the fact that we have only a vague notion as to numbers of - or quantities for - these different label varieties nor, in some cases, any clue as to which "variety" eventually became the "norm". Distribution is still very regional; a variety abundant in one area may be totally unknown in another, and we have far too many "one and only" reports in our files. Label awareness is slowly improving and we may yet unearth substantial troves of older, "lost" material. Take comfort in the fact that even the Study's "Reference Collection" - the basis of Newsletter, "Illustrated", etc. - exists, at over 50%, in Xerox form only! At last count, there were only five Label Dealers; though depth of stock and terms of sales vary greatly, they all do their best to fill specific requests. We plan to do a survey of these dealers in near future; we're also hunting up other possible sales sources. Post Office clerks can be good providers of current material ( plus Plate/Gap data! ) but you must tell them exactly what you require; we've seen savagely scissored items and heard tales of labels stapled in wads by clerks doing their uninformed best to accomodate collector needs! Thorough stripping and cleaning will preserve your beauties and can, in some cases, help reverse prior damage; small thins and tears can be carefully repaired. But please, if you're holding out for absolute perfection, expect a very long wait !

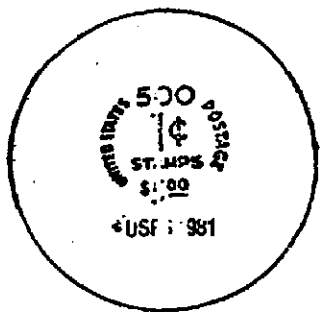
Finally, a word or two concerning proper armaments for would-be Dragon Slayers. The "Plate Number Coil Catalog, 1989" is an absolute essential; Stephen G. Esrati and the PNC Study Group continue to do an heroic feat, assembling all coil-related data under one cover! "The Plate Number", edited by Esrati, is a lively, on-going journal covering the whole PNC spectrum and serving as a forum for theories and Brave New Discoveries. The Plate Number Coil Collectors' Club ( PNC3 ) includes, with membership, subscription to the monthly "Coil Line"; ably edited by Thomas G. Maeder, "Coil Line" taps into a wide variety of little-known sources to present a potpourri of exceptional reports. Finally, Dr Robert Rabinowitz, one of our PNC Legends, puts out a series of occasional "Expose"s with often controversial - but never boring! - articles guaranteed to bring color to the Game ... even if it is, at times, "Blood Red"! Subscribe Today ! !

## TRADERS' NETWORK

The following have all indicated a willingness to trade spare items with fellow Label Fiends. Most are "general" collectors, some have a specialized area of interest, all are desperately seeking at least one or two items that you just might have hanging around! If describing your "spares" is a problem - and the LICs can be tricky! - try Xeroxing them; conversely, if you're looking for a specific item shown in these Newsletters, feel free to Xerox our "examples". Ideally, trading should be on a one-for-one basis but you might also consider putting a modest "cash value" on your scarcer spares. Good Hunting !

- RICHARD L. BEECHER / IO779 Woodbine St, #302 / Los Angeles, CA 90034 : Collects & Trades all three sizes and is especially interested in completing the tough "3000 Stamps" labels !
- RICHARD BERNAY / 50 Presidential Plaza, #2302 / Syracuse, NY 13202 : Collects and Trades all three label sizes and has some excellent "Spare Material" to swap around !
- GERALD H. CLARK / 424 Roosevelt St. / Midvale, UT 84047 : One of the Work Horses of this Project ! Gerry has an insatiable appetite for I7¢ Auto labels and "anything out-of-the-ordinary", balanced by good access to the many varieties of his Postal Distribution Region .
- DON EASTMAN / 24 Bemis St. / Berlin, NH 03570 : Better known as the President of PNC3, Don is also a frequent contributor to the Labels Project. Where locating new material is concerned, he has the enviable advantage of being an employee of the U.S. Postal Service !
- SCOTT L. HOPPIS / 13429 N. 76th Pl. / Scottsdale, AZ 85260 : Collects and Trades all three label sizes and has some very good "trade" varieties from his Postal Distribution Region .
- DOUGLAS PARKS / 303 East Ninth / Ogallala, NE 69153 : An "Old Timer", where labels are concerned! Doug is trying to complete his "Liberty" and "Americana" sets ( desperately needs the I4¢ "3000" ) while also doing very well on the "Transportation/PNC" series. He has some truly choice "spares" of items seldom seen outside his Postal Distribution Region !
- ROBERT S. ROWE / P.O. Box 150863 / Nashville, TN 37215 : Collects & Trades all three label sizes. Specializes in PNC First Day Covers and has, since mid 1988, prepared small lots of hand-painted Covers with the issue's Coil Label tied to the Cancellation! ( See Front Page ! ) Some are still available for Sale OR in Trade for other PNC FDCs !
- ERNEST St.LAURENT / P.O. Box 311 / Mansfield, MA 02048 : Collects and Trades all three label sizes; has some good "older" spares and better-than-average "current" material .
- RICHARD M. SITRON / 7720 B-430 El Camino Real / Carlsbad, CA 92009 : Has been collecting labels for over a dozen years and, consequently, has some exceptionally nice material for trade !
- DAVID E. B-LAVERGNE / 27 Braddock Park / Boston, MA 02116 : Yours Truly, and just as "hungry" as everybody else for older material! Especially seeking ( for Trade, Purchase, Study ) all "Overprinted" and "Jumbo-size" labels in "500" and/or "3000" series !

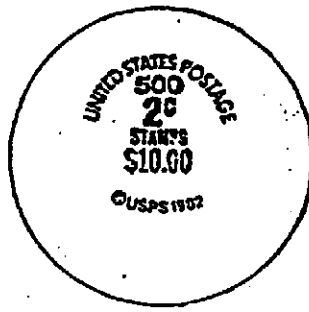
with Thanks and Praise to Jerry Clark, Scott Hoppis, Mike Rjoran, Doug Parks and Bob Rowen



Date Correction

1¢ 1981 S16/13

~ this design was incorrectly listed as "S16/18"! Sorry!

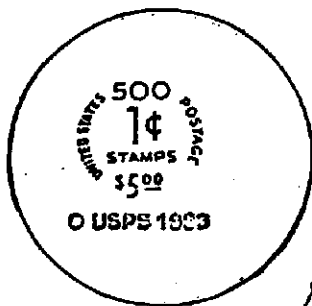


New Colors

2¢ 1982 A19/12

paper I: - blue (18/10)  
: - black\*

\* - this was originally listed incorrectly as "pale Gray".



Color Variation

1¢ 1983 S16/18

paper II: - Gray with blue\*

\* - color begins as "Gray" but gradually bleeds into "blue".

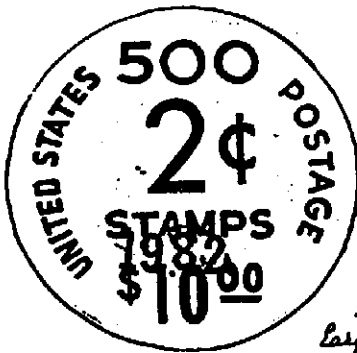


New Die

3¢ 1988 S29/15

paper II: - "Gray" shades

~ a "rubber stamp" version of the original, often very blurred.



New Overprint

2¢ "1982" J339/08

paper II: - red (15/4)  
"1982" rubber-stamped at lower center in bright purple.

Note: this "1982" is thicker and larger (@ 5x13mm) than those seen previously. Other styles and placements of this manually-applied handstamp undoubtedly will be found.

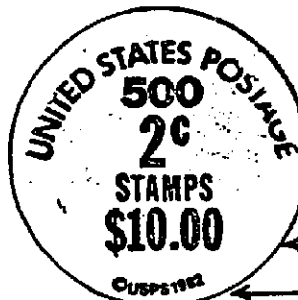


Color Variation

3.4¢ 1985 S29/12

paper II: - Gray with blue\*

\* - mostly "Gray" but seen with distinct streaks of "blue".



6mm

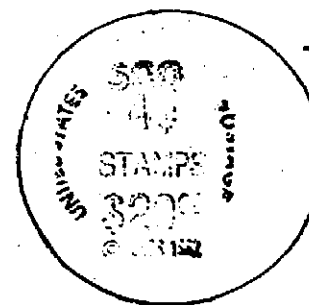
5mm

New Discoveries

2¢ 1982 A34/11

paper I: - red

These are rubber-stamp versions of the original black "steel die" design. In both, the line "©USPS 1982" has been shifted; at left, it sits @ 6mm below "\$10.00"; at right, only @ 5mm. The black original label had this copyright placed @ 8mm below the price line.

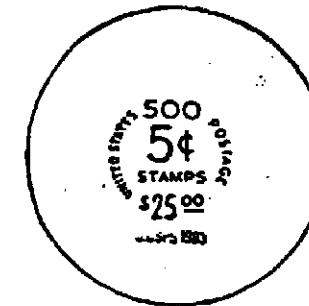


Correction and Addition

4¢ 1982 S25/12 1/2

~ this design was incorrectly listed as "S25/07 1/2"! Sorry!  
~ Also found partly missing both POSTAGE and UNITED STATES.

4.9¢ PC - three new variations are shown on page 8.



New Colors

5¢ 1983 S16/09

paper I: - black  
: - "Green"\*

\* - "Green" can vary from a dark "Mint" shade to almost "Lime".

"Labels Illustrated", part two

"Labels Illustrated" attempts to show all currently known coil label designs and most major design variations. Each entry notes label date, new label Identification Code, design parameters (D-T, U-E, @ Line) in millimeters, and the old-style LIC. Next follow label Paper Types, Basic Label Color(s) for each Paper Type, and confirmed Plate Number(s) and/or Precanceled Gap Position(s) where known. Most labels can be initially identified by placing your copy against the illustrated example and holding both up to a strong light; allow for minor variances due to die and/or paper fluctuations. Please report any new label designs, paper changes, colors, die variations, Plate Numbers or Gap confirmations to:

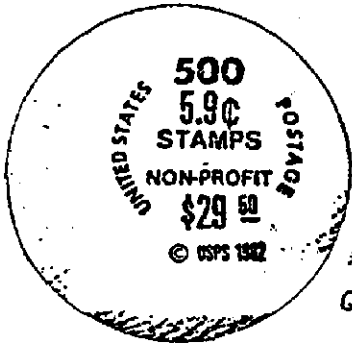
"the Coil Label Study Group" c/o David C. S. Ladegne 27 Braddock Park Boston, MA 02116-5816

Jumbo: ~in 500 series; "Jumbo" refers to labels measuring @ 45mm in diameter, produced for some early production runs of 5.9¢, 9.3¢, 10.9¢, and 17¢ coils (and possibly for 4¢ and/or 5.2¢). These oversized labels, indicated by a prefix "J" in the LIC, were used on both "regular" and on "precanceled" rolls of the same coil value, base labels being overprinted, as needed, in a wide variety of positions, colors and type-faces.

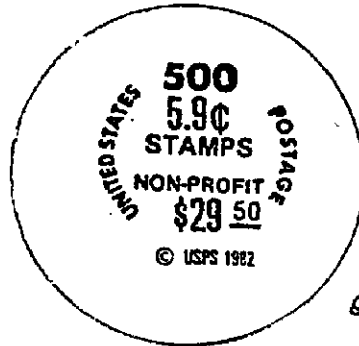
5.9¢ Bi-cycle  
Cottrell Press, plate #314.

Scott #1901

Two die variations of the same basic label design are known. Both were used as base labels for overprinted versions.



1982 JS25/12  
D-T: @25mm; @: @12mm (35J)  
"Small 50" die  
paper I: ~Black\* (1314)  
\* ~ tint varies from under-inked "pale Gray" to a heavy, muddy "black".

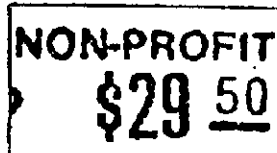


1982 JS25/12  
D-T: @25mm; @: @12mm (35J)  
"Big 50" die  
paper I: ~Black\* (1314)  
\* ~ tint varies from under-inked "pale Gray" to a heavy, muddy "black".

"Small 50" (original?) die:  
the \$29.50 price line is @ 9 1/2 mm long, ending beneath the "I" of NON-PROFIT.

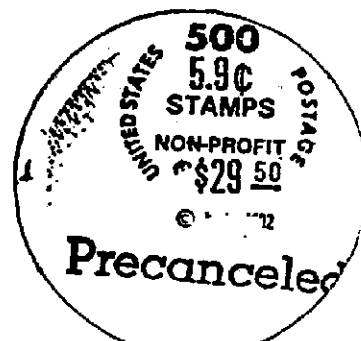
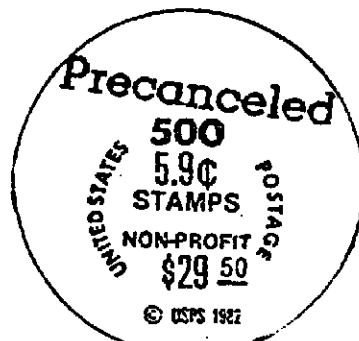
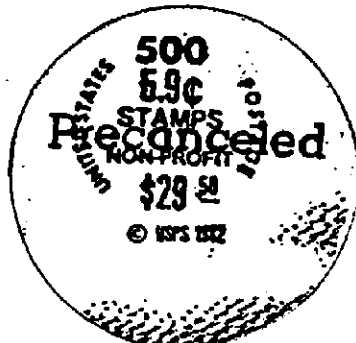
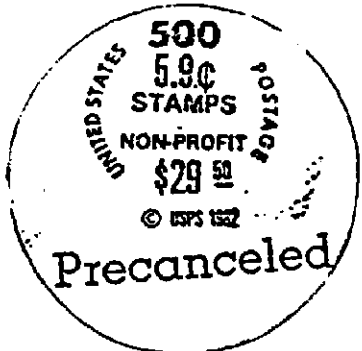


"Big 50" (revised?) die:  
the \$29.50 price line is @ 11 mm long, ending beneath the "T" of NON-PROFIT.



5.9¢ PC Bi-cycle  
Cottrell Press, plates #314 (56cp); #516 (16cp).

Scott #1901 a

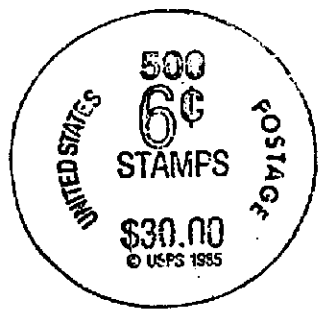


1982 JS25/12 "Small 50" die; data as above.  
Overprint: "Precanceled", @35mm, in black ink  
~ at bottom center (1314-4L), (1314-6L-6R)  
~ at center center

1982 JS25/12 "Big 50" die; basic data as above.  
Overprint: "Precanceled", @35mm, in black ink  
~ at top slanted  
~ at bottom center  
Note: Many more positions are suspected on both die types; please report your findings!

6¢ Bicycle  
 B Press, plate #1.

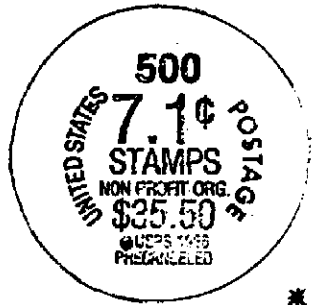
Scott #2126



1985 S29/12  
 D-T: @ 29mm; ©: @ 12mm (S6)  
 paper II: - blue (11)

7.1¢ PC Proctor (Sarl. Inscr)  
 B Press, plate #1

Scott #2127a



1986 S25 1/2 / 11  
 D-T: @ 25 1/2 mm; ©: 11mm (S5)  
 paper II: - Gray  
 : - blue  
 : - dark blue  
 : - pale blue  
 \* See page 15 for new label

6¢ PC Bicycle  
 B Press, plate #1 (56ops); #2 (76ops).

Scott #2126a



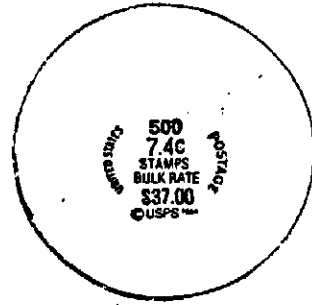
1985 S29/12  
 D-T: @ 29mm; ©: @ 12mm (S6)  
 paper II: - blue  
 paper III: - pale blue

Slug-Modified Labels

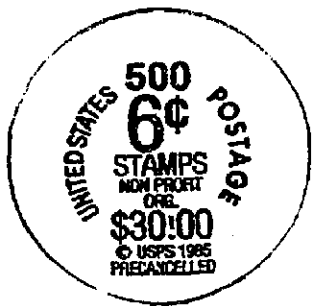
In 1984, another experiment in economy led to the creation of dies for 5.20, 7.4¢ and 11¢ that could be modified by inserting separate font-slugs reading "CAR-RT SORT" and/or "PRECANCELLED", whenever needed, to produce labels for precancelled rolls in the same denominations.

7.4¢ Baby Buggy  
 B Press, plate #2.

Scott #1902



1984 S16/08 1/2  
 D-T: @ 16mm; ©: 8 1/2 mm (S1)  
 paper II: - black  
 Note: both a "steel die" and a "rubber stamp" printing are known for this label.



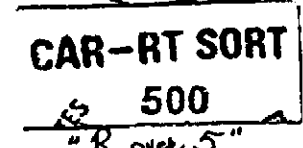
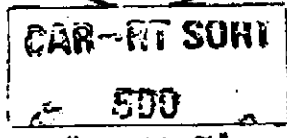
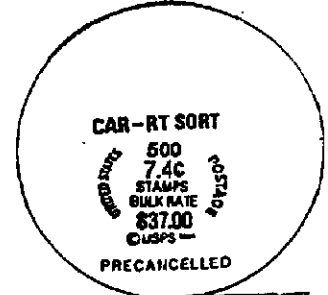
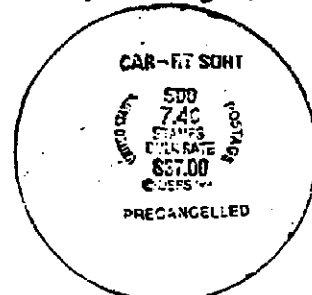
1985 S24/12  
 D-T: @ 24mm; ©: @ 12mm (S5)  
 paper II: - black

7.4¢ PC Baby Buggy  
 B Press, plate #2.

Scott #1902a

Same data as for Baby Buggy label, above, with addition of constant (?) lower slug "PRECANCELLED" and two (so far) known positions of upper slug "CAR-RT SORT".

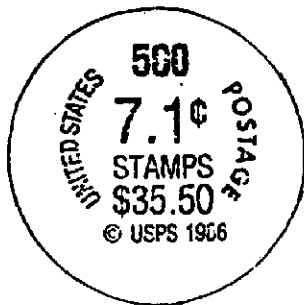
Variety: "Exclamatory Price"  
 The mark varies slightly in intensity, but seems constant on this black, paper II label.



"over 5"  
 paper II: - Gray  
 - other colors and slug positions probably exist. Please report

7.1¢ Proctor  
 B Press, plate #1.

Scott #2127



1986 S25 1/2 / 16  
 D-T: @ 25 1/2 mm; ©: @ 16mm (S5)  
 paper II: - pale Gray  
 paper IV: - blue  
 : - dark blue  
 : - Gray  
 : - Burgundy

7.6¢ Carreta (Serv. Inscribed) Scott #2255  
B Press, plates #1, #2.



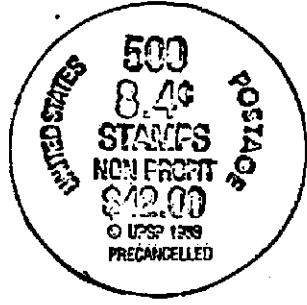
1988 S29/12  
D-T: @ 29mm; ©: @ 12mm (S6)

paper IV: ~dark Gray

Note: "USPS" is a constant "error";  
so far, on all 500-series labels.

8.4¢ - Two presses, two slightly different labels.  
We are threading dangerous waters; there apparent  
"differences" may be insignificant "micro-accidents".

8.4¢ Wheelchair (Service Inscribed) Scott #2256  
B Press, plate #1.

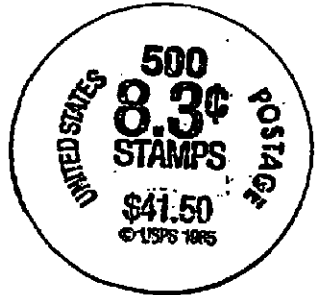


1988 S29/12  
D-T: @ 29mm; ©: @ 12mm (S6)  
~Numbers appear hollow.

paper IV: ~Gray\* (#1)

\* - may have streaks and/or  
spots of "blue".

8.3¢ Ambulance Scott #2128  
Cottrell Press, plate #1/2.



1985 S29/12 1/2  
D-T: @ 29mm; ©: @ 12 1/2 mm (S6)

paper II: ~blue  
: ~pale blue  
: ~dark blue

Note: Most (but not all) labels  
show faint traces of a deleted  
slug ("BULK RATE"?) between  
"STAMPS" and the price line.



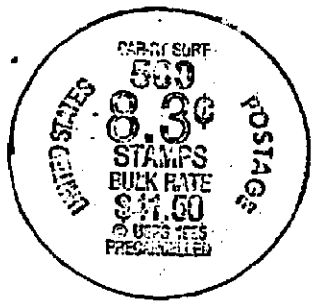
8.4¢ Wheelchair (Service Inscribed) Scott #2256  
C Press, plate #2.



1988 S29/12  
D-T: @ 29mm; ©: @ 12mm (S6)  
~Numbers appear solid.

paper IV: ~Gray, (#2)

8.3¢ PC Ambulance Scott #2128a  
Cottrell Press, plates #1/2 (5 Gaps); #3/4 (2 Gaps).

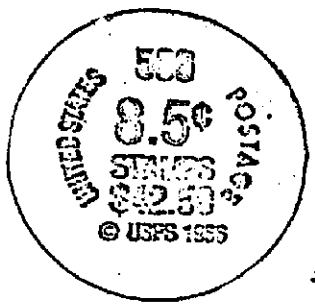


1985 S29/12  
D-T: @ 29mm; ©: @ 12mm (S6)

paper I: ~blue  
: ~pale blue

paper III: ~pale blue

8.5¢ Saw Truck Scott #2129  
B Press, plate #1

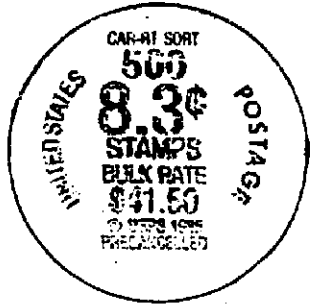


1986 S25/11 1/2  
D-T: @ 25mm; ©: @ 11 1/2 mm (S5)

paper IV: ~pale Gray (#1)

Note: This coil was issued in 1987;  
the design dates from 1986!

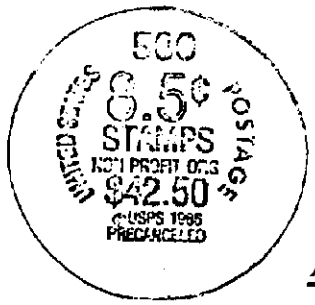
8.3¢ PC Ambulance (re-designed) Scott #2231  
B Press, plates #1 (5 Gaps); #2 (1 Gap).



1985 S29/12  
D-T: @ 29mm; ©: @ 12mm (S6)

paper IV: ~Gray

8.5¢ PC Saw Truck (Service Inscribed) Scott #2129a  
B Press, plates #1 (3 Gaps); #2 (1 Gap).



1986 S25/11 1/2  
D-T: @ 25mm; ©: @ 11 1/2 mm (S5)

paper II: ~pale Gray

Note: the "Gaps" are "Dumps" in the  
service-inscription alignment.

2c 14

9.34 Mail Wagon

Cottrell Press, plates #1/2, 13/4, 15/6.

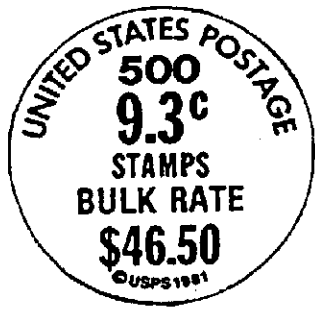
Scott #1903

Special Note: "SG" refers to colors listed by "Stanley Gibbon"

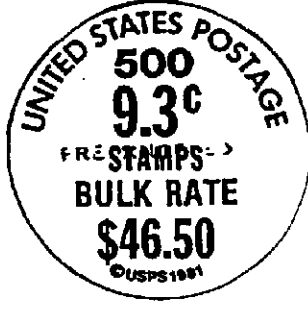
9.34 PC Mail Wagon

Cottrell Press, plates #1/2 (56cp); #2/4 (36cp); #3/4 (76cp); #4/8 (16cp); #5/6 (86cp).

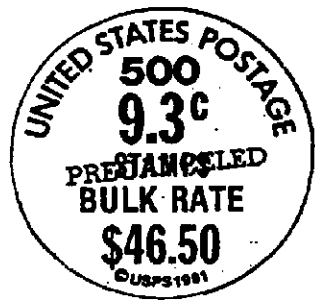
Scott #1903a



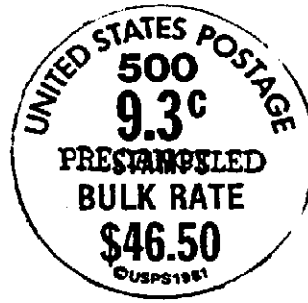
1981 A34/12  
U-E: @ 34mm; @: @ 12mm (A)  
paper II: - Brown  
(- Pantone 470U)



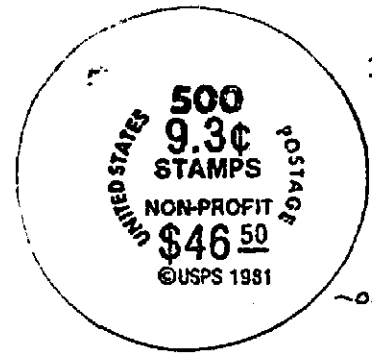
1981 A34/12  
~ same data as for base label  
Overprint: "PRECANCELED"  
@ 22mm, no serifs.  
- Gray



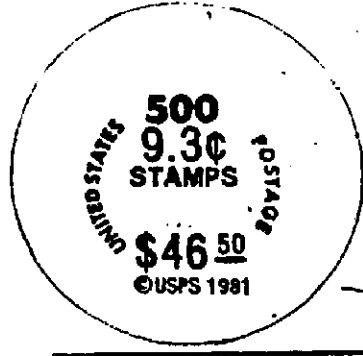
1981 A34/12  
~ same data as for base label  
Overprint: "PRECANCELED"  
@ 25mm, with serifs.  
- Blue



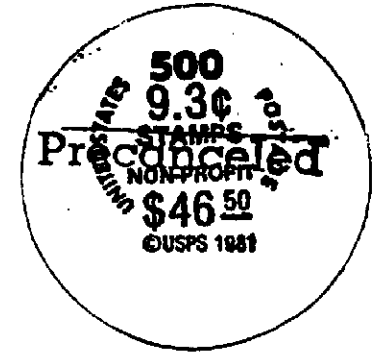
1981 A34/12  
~ same data as for base label  
Overprint: "PRECANCELED"  
@ 26mm, heavy serifs.  
- Blue (1516-51)  
- Gray



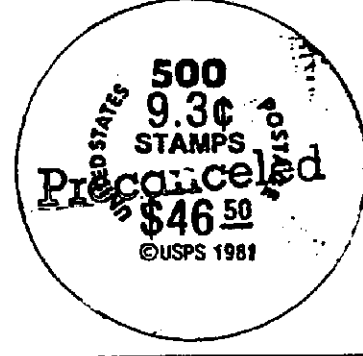
1981 JS 25/09  
D-T: @ 25mm; @: @ 9mm (S35)  
with "NON-PROFIT"  
paper I: - Carmine (SG#14)  
: - Rose Red (SG#6)  
: - Purple (SG#76)  
~ other colors are very probable.



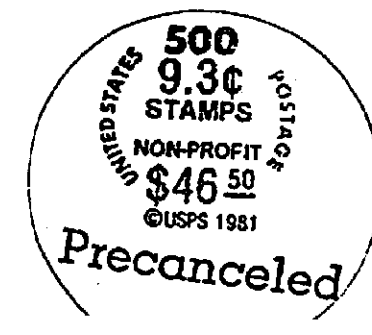
1981 JS 25/09  
D-T: @ 25mm; @: @ 9mm (S53)  
without "NON-PROFIT"  
paper I: - Magenta (SG#75)  
: - Bright Purple (#)  
: - Plum (SG#77)  
~ other colors are very probable.



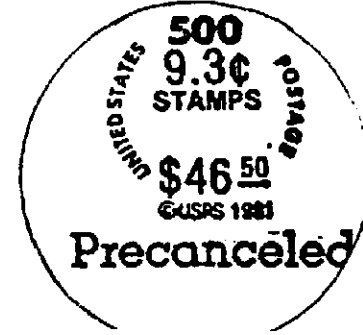
1981 JS 25/09  
~ data as for "NON-PROFIT" base  
Overprint: "Precanceled"  
@ 35mm  
- Purple (SG#76)  
(on "Carmine" base)



1981 JS 25/09  
~ data as for base label above  
Overprint: "Precanceled"  
@ 35mm  
- Rose (SG#5)  
(on "Magenta" base)



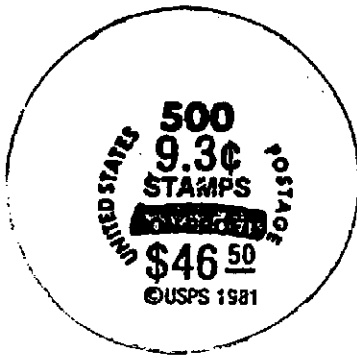
1981 JS 25/09  
~ data as for "NON-PROFIT" base  
Overprint: "Precanceled"  
@ 35mm  
- Rose (SG#5)  
(on "Rose Red" base)



1981 JS 25/09  
~ data as for base label above  
Overprint: "Precanceled"  
@ 35mm  
- Plum (SG#77)  
(on "Plum" base)  
(13/4-2R)

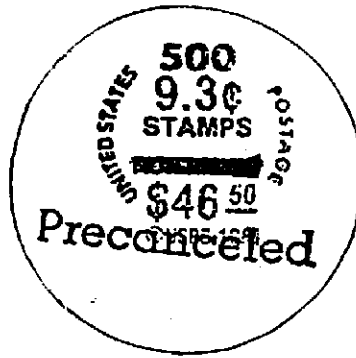


These transitional sessions have "NON-PROFIT" manually obliterated in pen or in "Magic Marker" ink



1981 JS 25/09  
- data as for "NON-PROFIT" base  
but with wording crossed out.

paper I: - Purple (80%#)



1981 JS 25/09  
- data as for "NON-PROFIT" base  
but with wording crossed out.

Overprint: "Pre-cancelled"  
@ 35 mm  
- Magenta (80#73)  
(on "Purple" base)  
(#1/2-5R)

Many, Many other Overprints in different colors and positions exist: Please report your findings!

10.1¢ DiL Wagon Scott #2130  
B Press, plate #1



1985 S 29/12  
D-T: @ 29mm; @: @ 12mm (S6)

paper II: - Gray (#1)

10.1¢ PC DiL Wagon Scott #2130a  
B Press, plates #1 (86ops); #2 (76ops).



1985 S 29/12  
D-T: @ 29mm; @: @ 12mm (S6)

paper II: - Gray  
: - pale Gray  
: - pale Blue  
paper III: - Blue  
: - pale blue  
: - pale Gray  
paper IV: - pale Gray

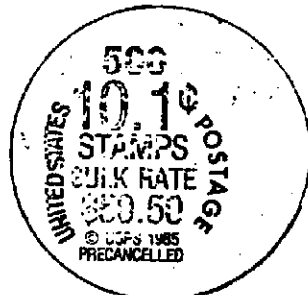
10.1¢ New PC Diler (Red Serf. Imcribed) Scott #  
B Press, plates #2 (3+ "Gops"); #3 (4+ "Gops")



1985 S 29/12 1/2  
D-T: @ 29mm; @: @ 12 1/2mm (S6)

paper II: - Blue

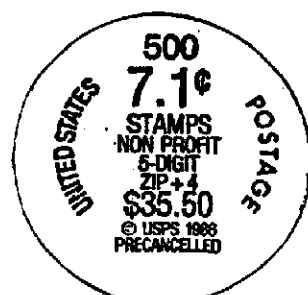
Note: the "Gops" are "Gumps" in the service-inscription alignment.



Major Variety  
D-T: @ 23mm; @: @ 12mm  
- caused by damaged die!

paper III: - Gray

7.1¢ New PC Spector (Zip+4) Scott #  
B Press, plate #1



1986 S 29/12  
D-T: @ 29mm; @: @ 12mm (S6)

paper II: - Blue

... One more Dragon for the St George Brigade ...

"Confirmed" labels ( plates or gaps ) is another dangerous nest of Vipers. A "Confirmed" Label is an item that one of us ( usually me ) has been able to physically examine for Paper type, Design parameters, Color values, etc., and determined to be genuine - i.e. "Confirmed". A Xerox is nice, but can't possibly provide the same incontestable data or absolute proof as an Original - which is why we earnestly request a look-see at the "real thing". A "Confirmed" Plate Number or Gap Position means that the label in question has been found at least twice ( preferably more, preferably in two different areas ) sealing rolls of the same Plate and/or Gap. This is not a guarantee, but does give a better-than-average chance of reversing the process to locate a specific Plate/Gap variety under a particular label. If anything, we're being over conservative in announcing these "confirmation", hesitating to release correlations that have been made ( repeatedly, in some cases ) in only one Postal Region.

... coming up in "LABEL MANIA #3", September, 1989 ...

"PRECANCELED", "Precanceled", "PRESORTED FIRST CLASS": the double-duty Overprinted labels of 1981-82. We'll take a long, hard look at the When, Where, Why and How of these "500 Stamps" items modified by the B.E.P. to also seal precanceled versions of the same coil issues. At least five different overprint styles, a bewildering variety of positions, an equally bizarre array of colors ... We're still gathering data ( and can definitely use more input ! ) but we'll try to present a logical, realistic examination of this early B.E.P. experiment in label economy.

The Labels' Views on the "LOCO TWOS" : The Plate Number, July 1989, neatly outlined the situation : Ten Cottrell plates were originally assigned to print the 2¢ Locomotive coil but, between April 1982 and November 1986, the B.E.P. played musical chairs with the plate pairings, shredded whole press runs, switched coil papers, fooled around with tagging mats and, in the process, completely lost track of production figures! Meanwhile, the Labels Project has ( so far ) logged three different "500 Stamps" designs in nine distinct varieties PLUS a growing number of "3000 Stamps" variations. Can our findings, incomplete though they be, help put the Locomotives back on track ?

PLUS : "Labels Illustrated, part three" continues our "500 Stamps" pre-catalogue from 10.9¢ to 15¢;  
: MORE "Additions, Corrections and New Discoveries" from our eager-beaver contributors;  
: NEW "Trading Partners" to help in the quest for those elusive bits of printed paper;  
: PLENTY of Useless Information, Unanswerable Questions, New & Improved Spelling Errors !

LABEL MANIA is mailed FREE to anyone genuinely interested in learning about or contributing to the pursuit and study of U.S. "Transportation/PNC" coil labels. We eagerly welcome all suggestions, enquiries, theories, discoveries. Whether you have five labels or 5,000, you CAN help !

Coil Label Study Group  
c/o David E. B.-LaVergne  
27 Braddock Park  
Boston, MA 02116-5816

FIRST CLASS MAIL