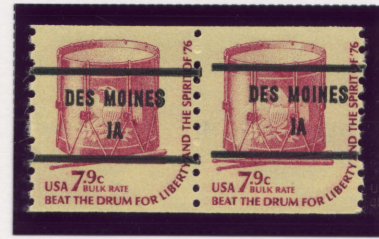


## Bureau printed precancel gap positions:

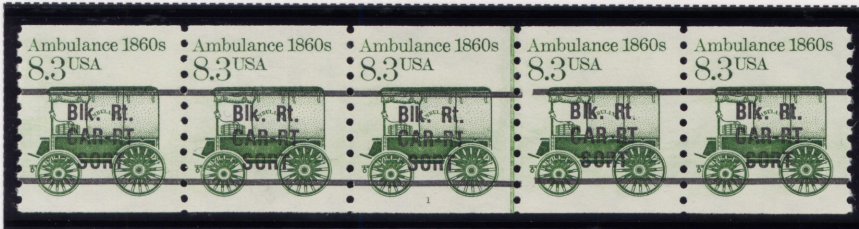
Prior to the advent of the PNC, the Cottrell press was printing stamps that were precanceled with 2 horizontal lines which produced gaps at 12 stamp intervals. Electrotypes plates on rotary presses printed the lines, and gaps are a result of the space between where these plates meet each other end-to-end on the press. These gaps held little significance.



Precancel Gap Pair

With the plate number added to the stamp, collectors noticed a relationship between the plated stamp and the gap. This relationship developed into a new collectible unique to the PNC: **Precancel Gap Positions**

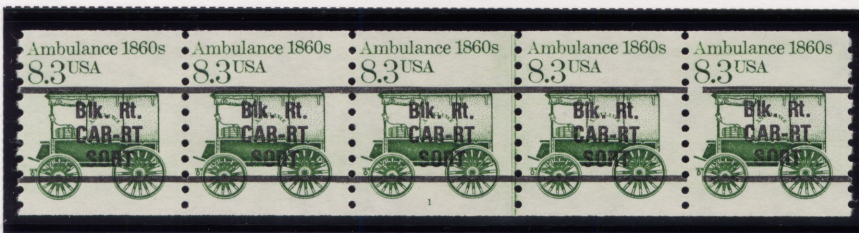
PS5 Line Gap



A new type of nomenclature was developed:

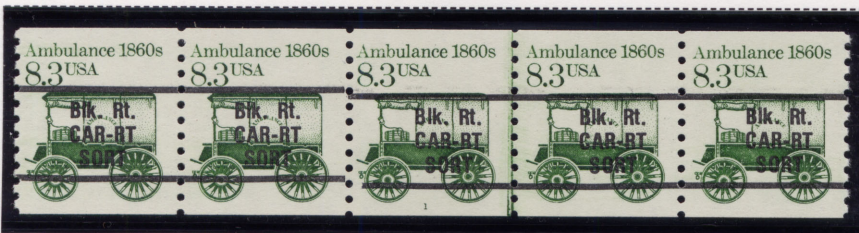
Gaps falling on the joint line are **Line Gaps**.

PS5 GAP 1R



Other gaps are named by the closest perforation, either to the right or to the left, and are designated as **1R, 1L, 2R, 2L, etc.**

PS5 GAP 1L

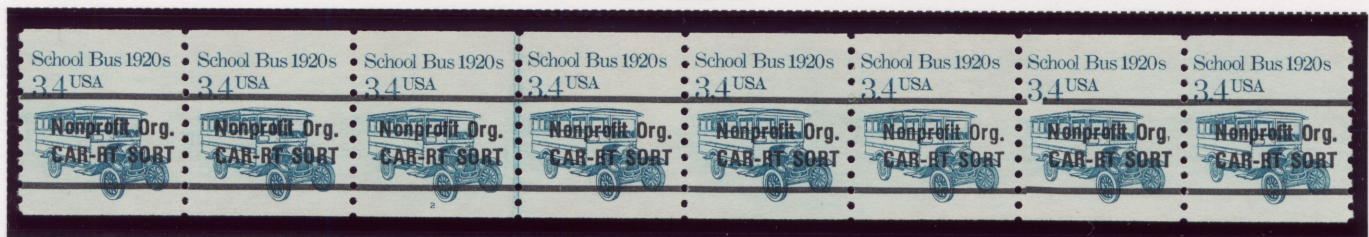


Gaps 2L to 2R are typically saved in strips of 5 as **PS5's**.

It should be noted that the precancel gap was instrumental in the PNC collector favoring a PS5 over a PS3. Quite simply, **more gaps could be shown on the PS5.**

To preserve gap positions **beyond 2L or 2R**, however, longer strips are necessary. A standard procedure was developed in which **2 stamps were saved beyond the gap and 2 stamps beyond the plate number.** Each issue varied as to the amount of gaps printed. Research has shown some gaps to be common, while others have proven to be quite scarce.

PS8 GAP 3R



What about the gaps not printed on the Cottrell press?

An imaginary line is drawn on the perforation that is right of the plate number, and the naming remains the same as on the Cottrell issues.