

The following pages are from

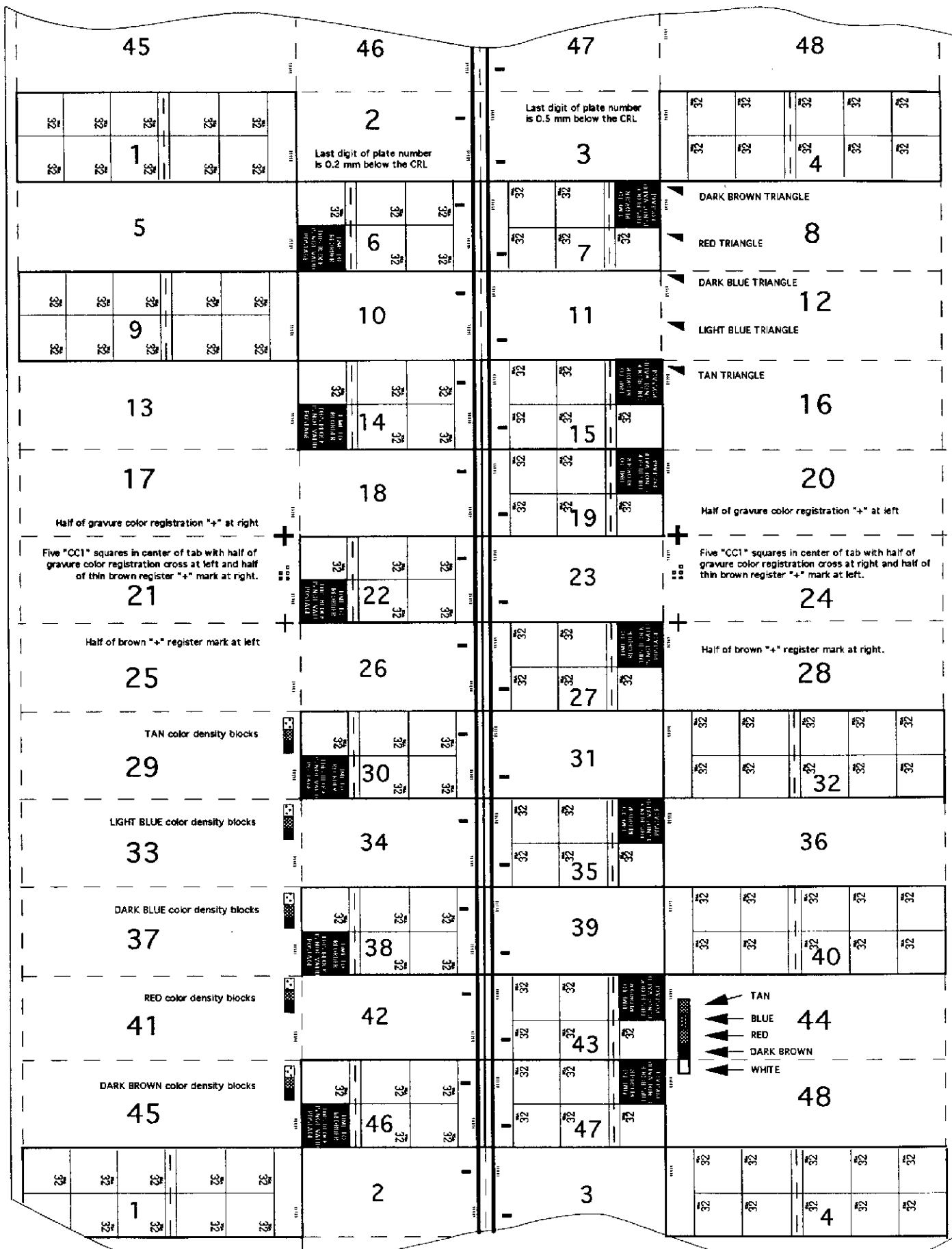
Research Paper Number 2
Folded Style Booklet Checklist
Published by the United States Stamp Society

Compiled by Michael O. Perry
P. O. Box 1194, Rainier, OR 97048
Email: MOPerry@pacifier.com

Current edition (#13) available for \$13.00 postpaid from
David Eeles
P. O. Box 933, Columbus, OH 43216-0933

\$4.80 SELF-STICK FLAG OVER PORCH BOOKLET PANE LAYOUT

This drawing represents a web segment printed from a set of gravure cylinders used for the new 15-stamp self-stick booklets made by the Bureau of Engraving & Printing in 1997. The 10-subject panes have register markings similar to the \$6.40 self-stick booklet panes produced in 1996, but the BEP processed this web so the markings are in different locations. Panes from the right half of the web are inverted in relation to panes from the left half.



Dashed lines represent "cut" lines for panes.

Large numbers represent arbitrary booklet pane positions.

\$4.80 Self-Stick Flag Over Porch Books			Plate No.
Book	Panes	Selvage Marks on BOTTOM panes of 10	11111
A	2 - 1, etc.	Plain tab (Last digit of plate # on top pane is 0.2 mm below CRL)	
E	18 - 17	Part of Color Register "+" at right edge of tab	
F	22 - 21	5 CC1 squares in center (3 squares in top row)	
G	26 - 25	Part of Brown "+" Mark at left edge of tab	
H	30 - 29	Tan "color density blocks" over left stamp	
I	34 - 33	Light Blue "density blocks" over left stamp	
J	38 - 37	Dark Blue "density blocks" over left stamp	
K	42 - 41	Red "color density blocks" over left stamp	
L	46 - 45	Dark Brown "density blocks" over left stamp	
M	3 - 4, etc.	Plain tab (Last digit of plate # on top pane 0.5 mm below CRL)	
N	7 - 8	Red and Dark Brown Triangles	
O	11 - 12	Light Blue and Dark Blue Triangles	
P	15 - 16	Tan Triangle over right stamp	
Q	19 - 20	Part of Color Register "+" at left edge of tab	
R	23 - 24	5 CC1 squares in center (2 squares in top row)	
S	27 - 28	Part of Brown "+" Mark at right edge of tab	
W	43 - 44	Brown, Red, Blue & Tan color ladder at left side	
X	47 - 48	White color ladder box at right side of tab	

The \$4.80 and \$9.60 Flag Over Porch books were made for vending machine sales. The stamp designs are identical to the \$6.40 self-adhesive Flag Over Porch books except for the date under each stamp (the \$6.40 books had a 1996 date while the \$4.80 and \$9.60 books have 1997 dates). 10-subject panes from \$6.40 books have register markings similar to the panes in \$4.80 books, but the BEP processed the two issues so the marks were located in different positions on the panes.

The \$4.80 books contain a pane of five stamps (plus a reorder label) attached to a pane of ten stamps. The BEP processed the web intended for the \$4.80 books so that the plate numbers were located over the right stamps on both panes and the LRM was located over the left stamp on the pane of five. Previously, all booklets made on the Goebel machines had the LRM over the right stamp (with the exception of the first issue, and three later issues where some EFO books were produced).

The \$9.60 books contain three panes of ten stamps; the plate numbers and LRM are in the normal locations. Each pane has a CRL and LRM, but the LRM is a different length on each pane. It is unlikely that the USPS will sell unfolded panes of ten from the \$9.60 booklet.

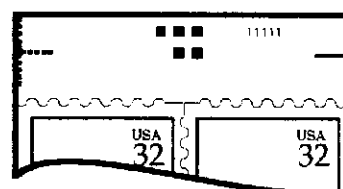
Unfolded FOP panes of 10 from \$4.80 books		
POS	IDENTIFYING SELVAGE (TAB) MARKINGS	11111
1	Plain - plate number over right stamp	
8	Red and Dark Brown Triangles	
12	Light Blue and Dark Blue Triangles	
16	Tan Triangle over right stamp	
17	Part of Color Register "+" at right edge of tab	
20	Part of Color Register "+" at left edge of tab	
21	5 CC1 squares in center (3 squares in top row)	
24	5 CC1 squares in center (2 squares in top row)	
25	Part of Brown "+" Mark at left edge of tab	
28	Part of Brown "+" Mark at right edge of tab	
29	Tan "color density blocks" over left stamp	
33	Light Blue "density blocks" over left stamp	
37	Dark Blue "density blocks" over left stamp	
41	Red "color density blocks" over left stamp	
44	Brown, Red, Blue, & Tan color ladder at left	
45	Dark Brown "density blocks" over left stamp	
48	White (unprinted) color ladder box at right	

The \$9.60 FOP booklets contain panes without any unique registration markings in the tabs; there is just a CRL and LRM in the tab of each pane. The LRM on the top pane is longer than on the other two panes, and the LRM on the bottom pane is slightly longer than the LRM on the center pane. The BEP used a separate plate layout for each of the \$4.80 and \$9.60 booklets.

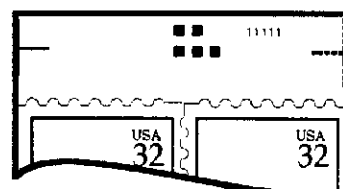
Unfolded Flag Over Porch pane of 5 from \$4.80 books

POSITION 2 - Last digit of Plate # 0.2 mm below CRL

POSITION 3 - Last digit of Plate # 0.5 mm below CRL



Position 21 - Three CC1 squares located above two CC1 squares.



Position 24 - Two CC1 squares located above three CC1 squares.

\$9.60 Flag Over Porch self-stick booklet of 30

Plate 11111