

**The following pages are from**

**Research Paper Number 2**

**Folded Style Booklet Checklist**

**Published by the United States Stamp Society**

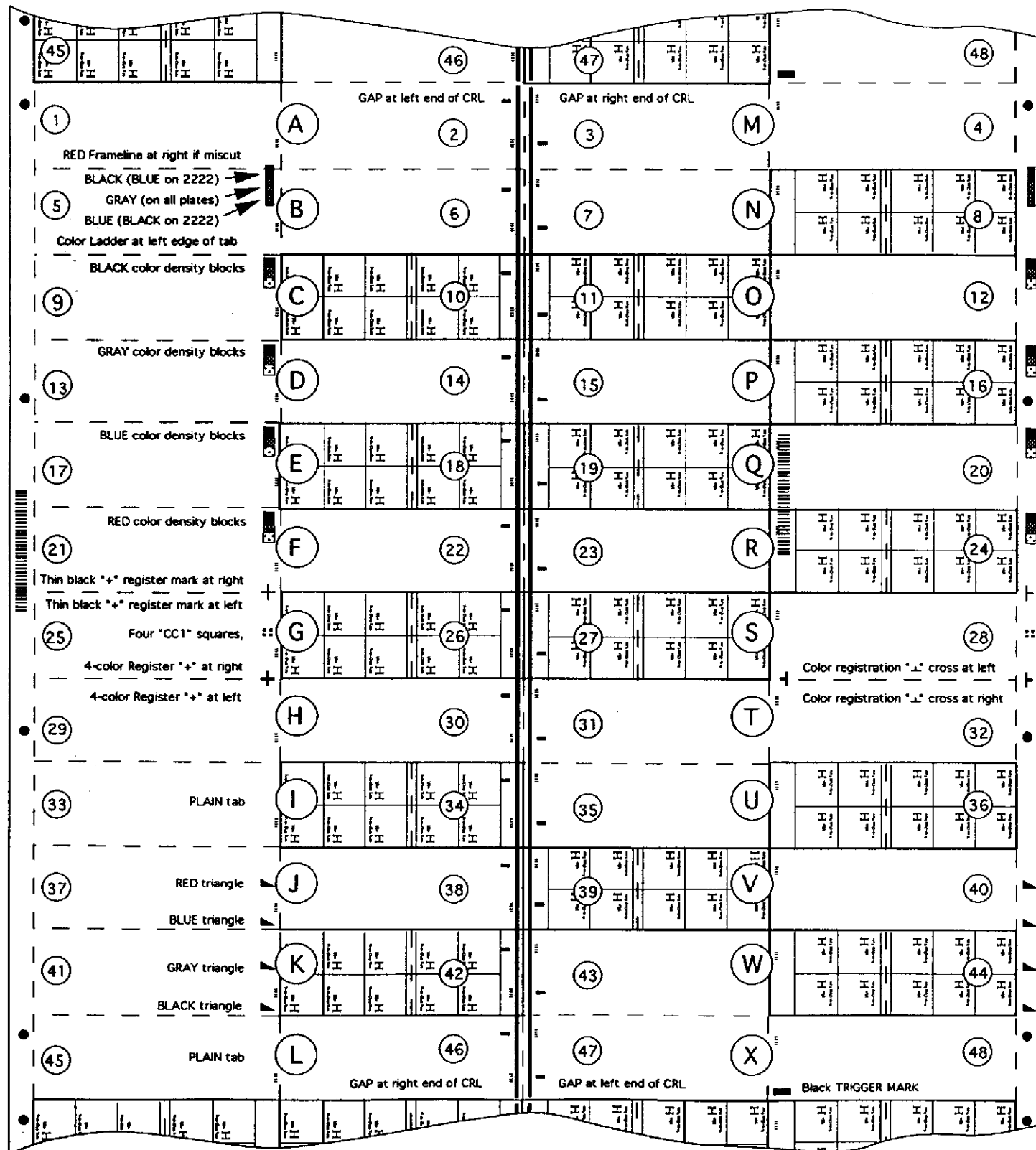
Compiled by Michael O. Perry  
P. O. Box 1194, Rainier, OR 97048  
Email: [MO\\_Perry@pacifier.com](mailto:MO_Perry@pacifier.com)

Current edition (#13) available for \$13.00 postpaid from  
David Eeles  
P. O. Box 933, Columbus, OH 43216-0933

# \$6.60 "H" RATE (UNCLE SAM'S HAT) BOOKLET LAYOUT

Page 47

This drawing represents a web segment printed from gravure cylinders for \$6.60 self-stick 20-stamp "H" Rate booklets. The CRL gaps on pane positions 2, 3, 46, and 47 are very narrow and are not found on 2222 panes. The order of colors in the CC1 squares (pos. 25), the inverted "T" (pos. 28 and 32), and the color ladder (pos. 5) are different on 2222. The number, and locations, of the solid circles ("Tie Points") shown in the sheet margins is unknown, and it is uncertain if the other register marks shown in the right web margin existed on all cylinders (it is likely that they did not exist on 2222). The H Rate book was produced during a period of experimentation while the electronic Stamp Inspection System (SIS) was being started up. Since the BEP only processes half the web into booklets at a time, they needed bar codes printed on each half. If the right web margin contained color register markings as shown below, there would have been no place to print a bar code, and thus the web would have required manual inspection. The BEP tried using the SIS to inspect at least one roll printed from 1111 by printing the bar code in the tab of the panes in column 4 rather than in the right web margin.



Dashed lines represent "cut" lines for panes.

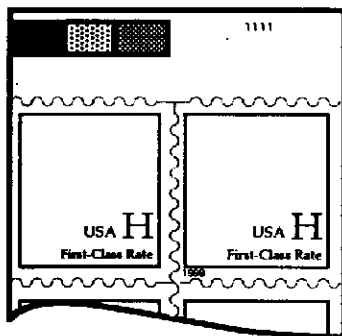
Numbers in small circles represent booklet pane positions; Letters in larger circles show booklet positions

Bar codes printed in left web margin and either the right web margin or in the tab of the right column of panes during the electronic stamp inspection (SIS).

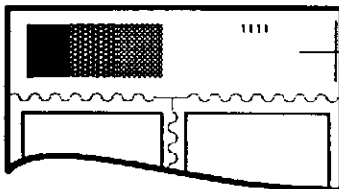
# **\$6.60 Self-Stick "H" Rate (Hat) Booklets** (Bureau of Engraving & Printing)

Pos.	Panes	Registration Markings on BOTTOM (or top) pane's tab	1111	2222	3333
A	2 - 1	CRL gap @ left with plain bottom pane (or with red frameline @ right)		*	
B	6 - 5	Black, Gray, & Blue Color Ladder inside a Red frameline			
C	10 - 9	Black "color density blocks" over left stamp			
D	14 - 13	Gray "color density blocks" over left stamp			
E	18 - 17	Blue "color density blocks" over left stamp			
F	22 - 21	Red "color density blocks" at left and half of a Black "+" at right			
G	26 - 25	CC1 squares in center; half of a "+" mark at each side			
H	30 - 29	Half of Color Register "+" mark at left (vertical legs of "+" must show)			
I	34 - 33	Plain tab on bottom pane - WITHOUT a CRL gap on top pane			
J	38 - 37	Red and Blue Triangles			
K	42 - 41	Gray and Black Triangles			
L	46 - 45	CRL gap starts 32.5 mm to right of LRM on top pane (not found on 2222)			
M	3 - 4	CRL gap starts 31 mm to right of LRM on top pane (not found on 2222)			
P	15 - 16	Small portion of Bar Code at left side of bottom pane's tab (1111 only?)			
Q	19 - 20	Part of Bar Code across most (or all) of bottom pane's tab (1111 only?)			
R	23 - 24	Part of Bar Code in right half of bottom pane's tab (on plate 1111 only?)			
S	27 - 28	Half of color register "┐" mark at left (vertical leg of "┐" must show)			
T	31 - 32	Half of color register "┐" mark at right			
X	47 - 48	Black Trigger Mark (possible CRL gap at left on 1111 and 3333 books)			

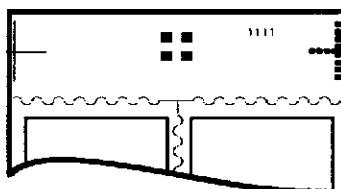
\* Position A books from plate 2222 must have a trace of red frameline from the color ladder showing since there are no CRL gaps on 2222 panes. Some register markings on panes printed from #2222 cylinders are different than on panes printed with 1111 and 3333. While the marks are located in the same place, the arrangements of the colors are different. Specifically, the CC1 squares on the position 25 panes (position G book) with plate 1111 and 3333 have a gray square at the UL, red at UR, black at LL, and blue at LR; on the plate 2222 panes, the CC1 squares are red at UL, blue at UR, gray at LL, and black at LR. On position 5 panes (position B book), the colors in the color ladder are black, gray, and blue (left to right) on 1111 and 3333 panes; the colors are reversed on 2222 (blue, gray, and black). The inverted "T" mark on position 28 and 32 panes (position S and T books) from plate 2222 has a black square in the center, followed by a red, blue, and gray square; on both 1111 and 3333 panes, the center square is red, followed by a blue, gray, and black square. Books with 1111 panes from the right half of the web exist with part of the Bar Code printed in the tab of the second pane in the book - most likely positions Q and R. The bar code occasionally found in a sequence of three booklets - probably positions P, Q, and R.



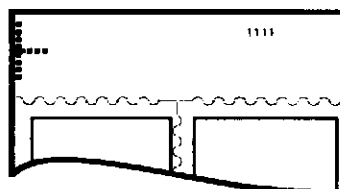
Position 5  
Color Ladder



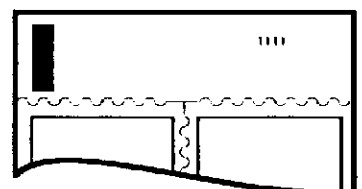
Position 21  
Red Density Blocks & Black +



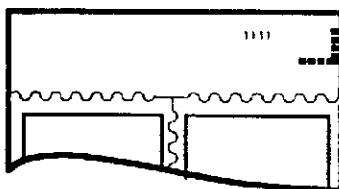
Position 25  
CC1 Squares and two + marks



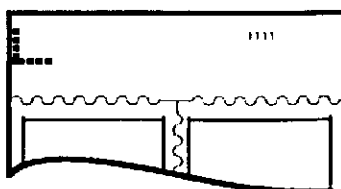
Position 29  
Half of 4-Color Register +



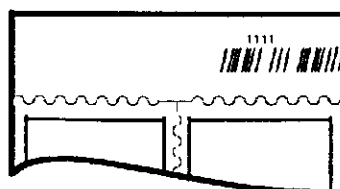
Position 48  
Black Trigger Mark



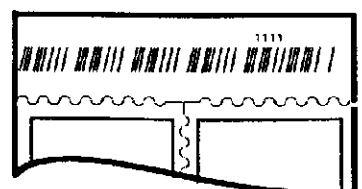
Position 32  
Half of 4-Color Register ⊥



Position 28  
Half of 4-Color Register ⊥



Position 24 (generic)  
Part of SIS Bar Code



Position 20 (generic)  
Part of SIS Bar Code